

Shaded Parking Lots



Elisabeth Carr-Jones TMM Precinct 14, Susan Stamps TMM Precinct 3
GreenStreetsArlington.org

A More Livable Town

- Greener Streets
- Cooler and more Pleasant
- Better for Local Business

Climate Change Resilience

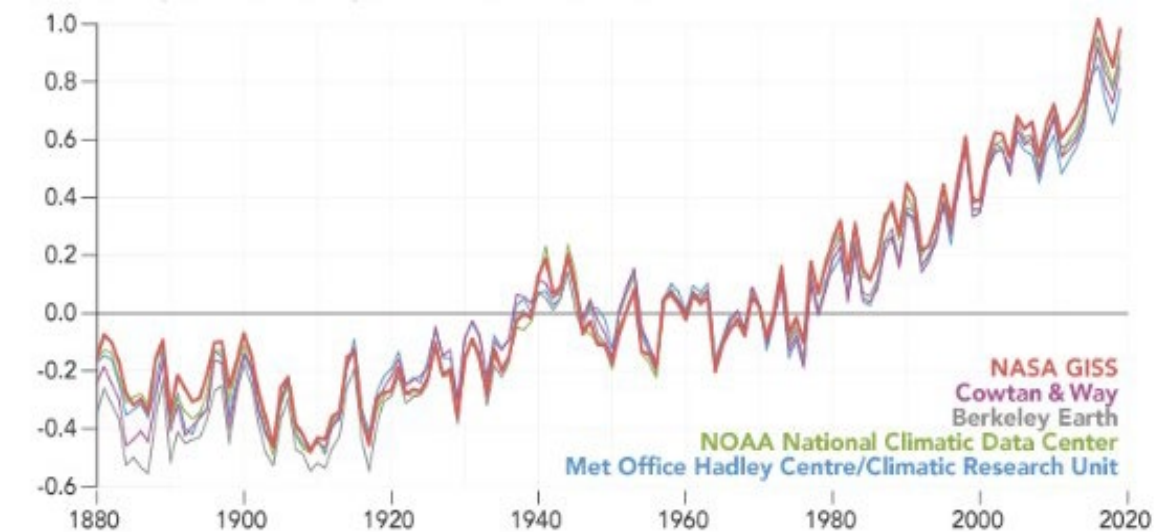
- Reduced Heat Islands
- Reduced Flooding
- Improved Air Quality

Advances Community Goals

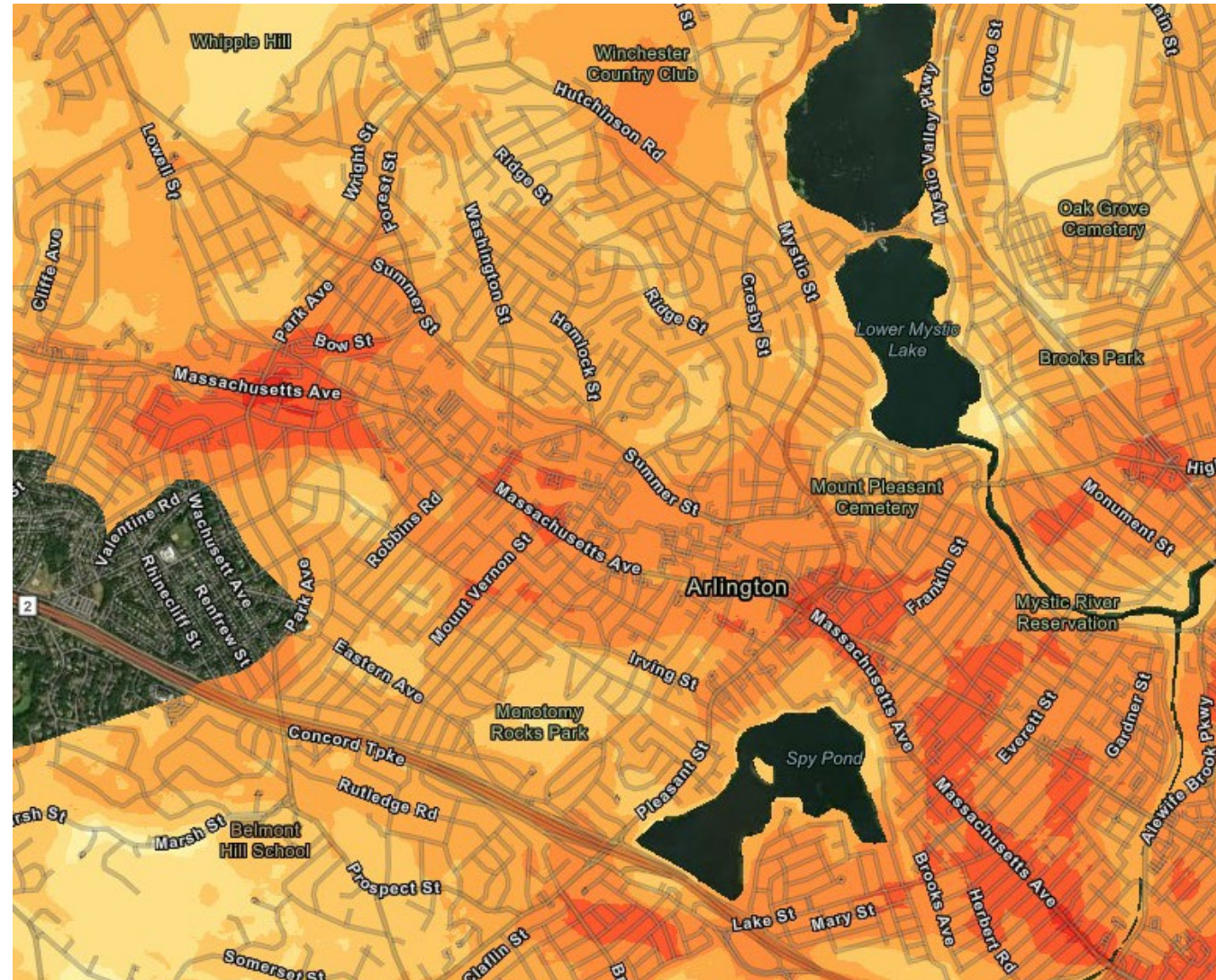
- Sustainable Action Plan
- Hazard Mitigation Plan
- Net Zero Action Plan



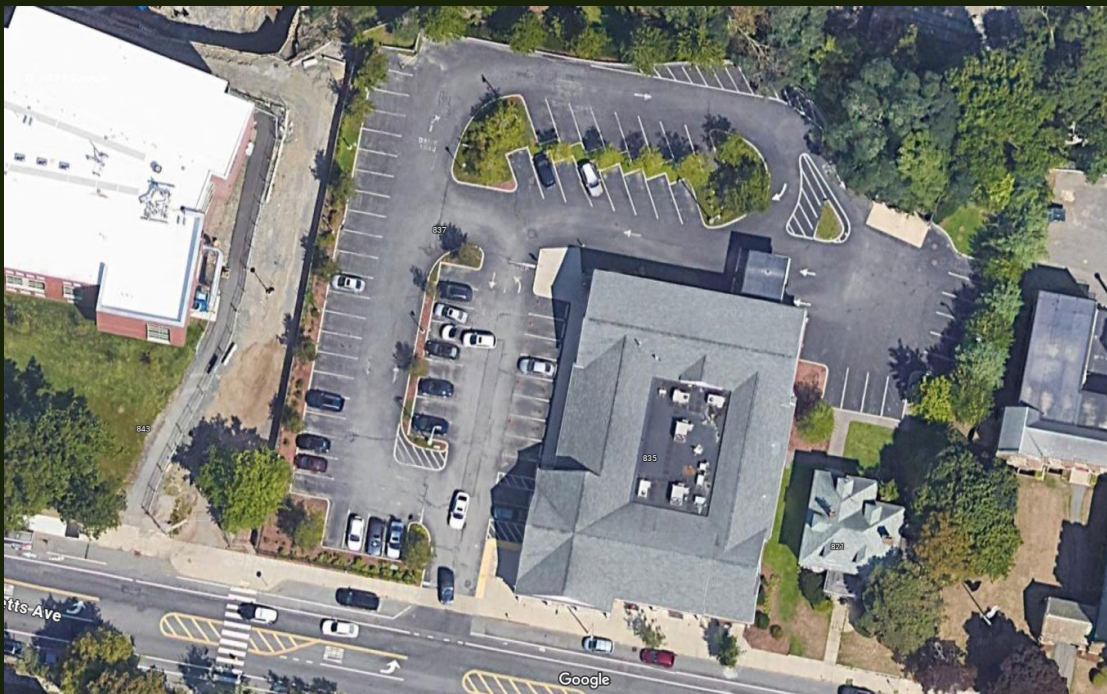
Climate Change is driving
global temperatures higher.
Arlington's unshaded pavement
contributes to local warming.
Let's think globally & act locally.



Global Average Temperature



Arlington Temperature Map



Existing Bylaw

6.1.11.D (6) Parking areas providing more than 25 spaces shall include:

- Landscaped areas at least 8% of the total paved parking area.
- Individual strips of landscaping at least four feet wide.

Shaded Parking Lot Bylaw Amendment

In addition, pavement shade shall be provided by one or both of the following methods:

- a. Install one shade tree for every eight parking spaces, with some part of each space within 32 feet of a tree.
- b. Install solar panels over parking spaces allowing cars to park underneath to a minimum of 50% of the parking lot surface.

Example: Whole Foods parking lot



What We Have

81 Spaces, 0 Trees, 0 Solar panels



What We Could Have Had

80 Spaces, 5 Trees, 192 Solar panels

Shaded Parking Lots



We welcome your questions
[GreenStreetsArlington.org](https://www.GreenStreetsArlington.org)