

FOR IMMEDIATE RELEASE
March 26, 2015

Area # 9 Sewer System Investigation

The Town of Arlington has initiated a program to reduce the amount of groundwater (infiltration) and rainwater (inflow) entering the sewer system. Through this program, sources of Infiltration and Inflow (I/I) will be identified and removed. When these sources are removed, the quantity of flow entering the Arlington sewer system, and the risk of sewer backups and overflows, will be reduced.

The Town's consultants, Weston & Sampson Engineers, Inc. and their subconsultant, Heitkamp Inc., will be conducting sewer manhole and sewer pipe inspections to identify sources of infiltration and inflow.

Crews will be performing inspections between March 30, 2015 and June 5, 2015. The majority of the work will be performed Monday through Friday, between 7:00 a.m. and 5:00 p.m. Nighttime flow isolation work will also be conducted as part of this project. Flow isolation work must be conducted Sunday through Thursday night, between 12:00 a.m. and 6:00 a.m. Flow isolation work involves measuring flow in each sanitary sewer manhole and should only take 10 minutes per location.

The inspection areas are highlighted on the attached project map.

Persons performing these inspections will be in clearly marked trucks. Work will be conducted primarily within the Town's right-of-way and private residences should not be affected.

Path: \\gisdata\serv\ig\isData\Store\Client\Arlington\MA\Project\Sewer\System\Area 9 Maps\Year9Locus.mxd User: Ozarekcz Saved: 3/26/2015 9:43:42 AM Opened: 3/26/2015 9:43:59 AM

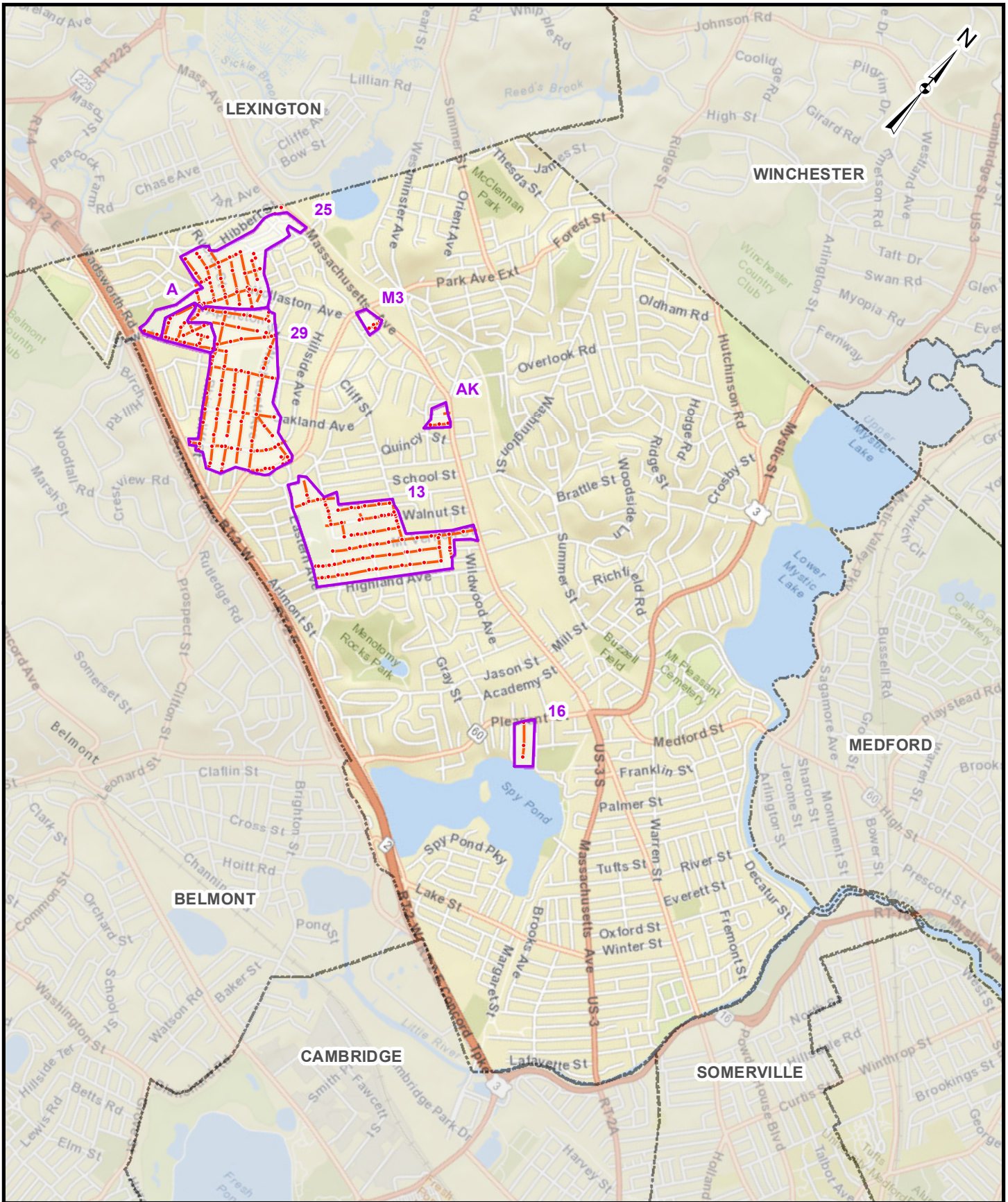


FIGURE 1
Town of Arlington, Massachusetts
Year #9 Investigations

- Area #9 Features**
- Manhole
 - Gravity Main

Locus Map

