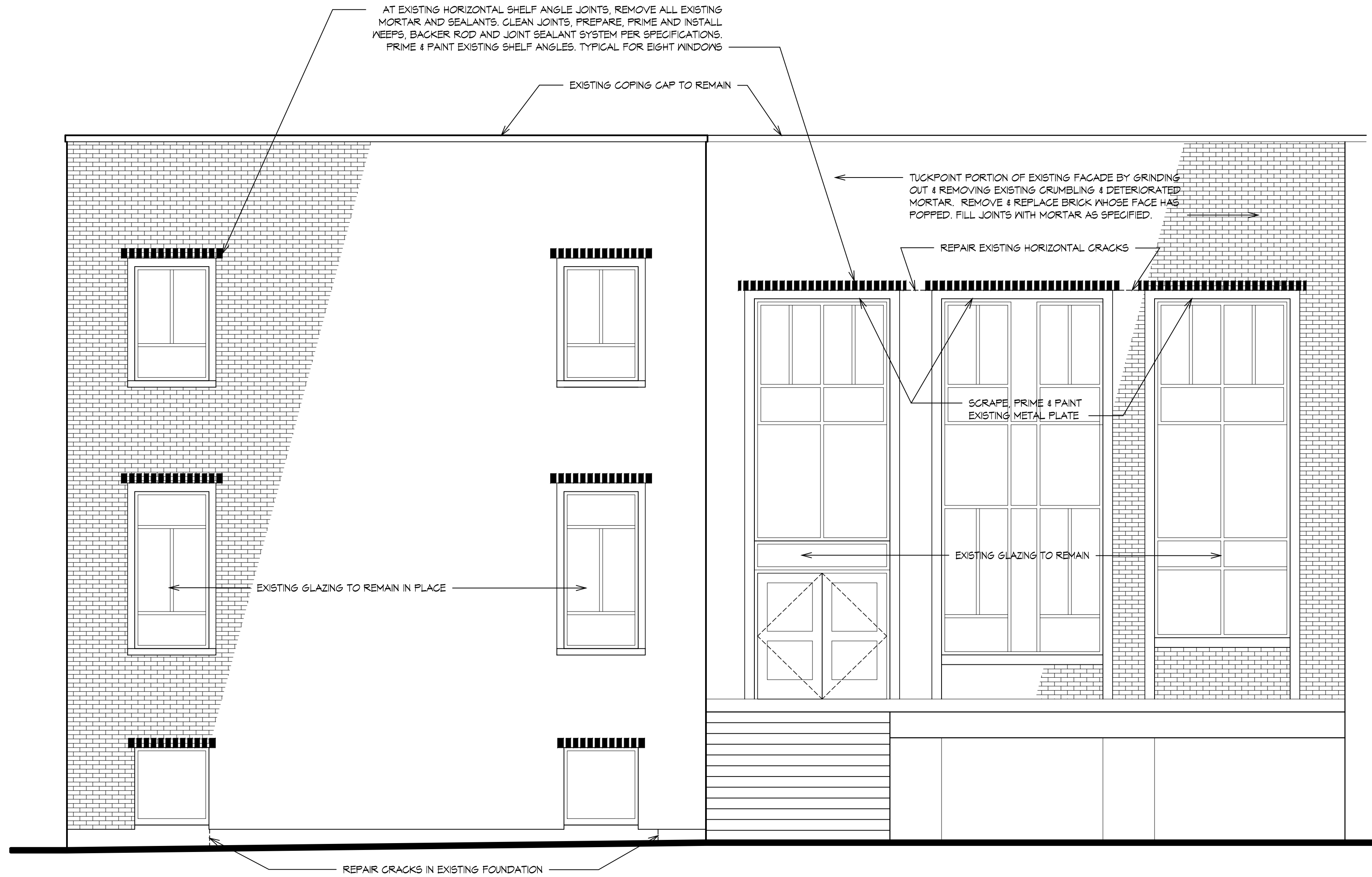


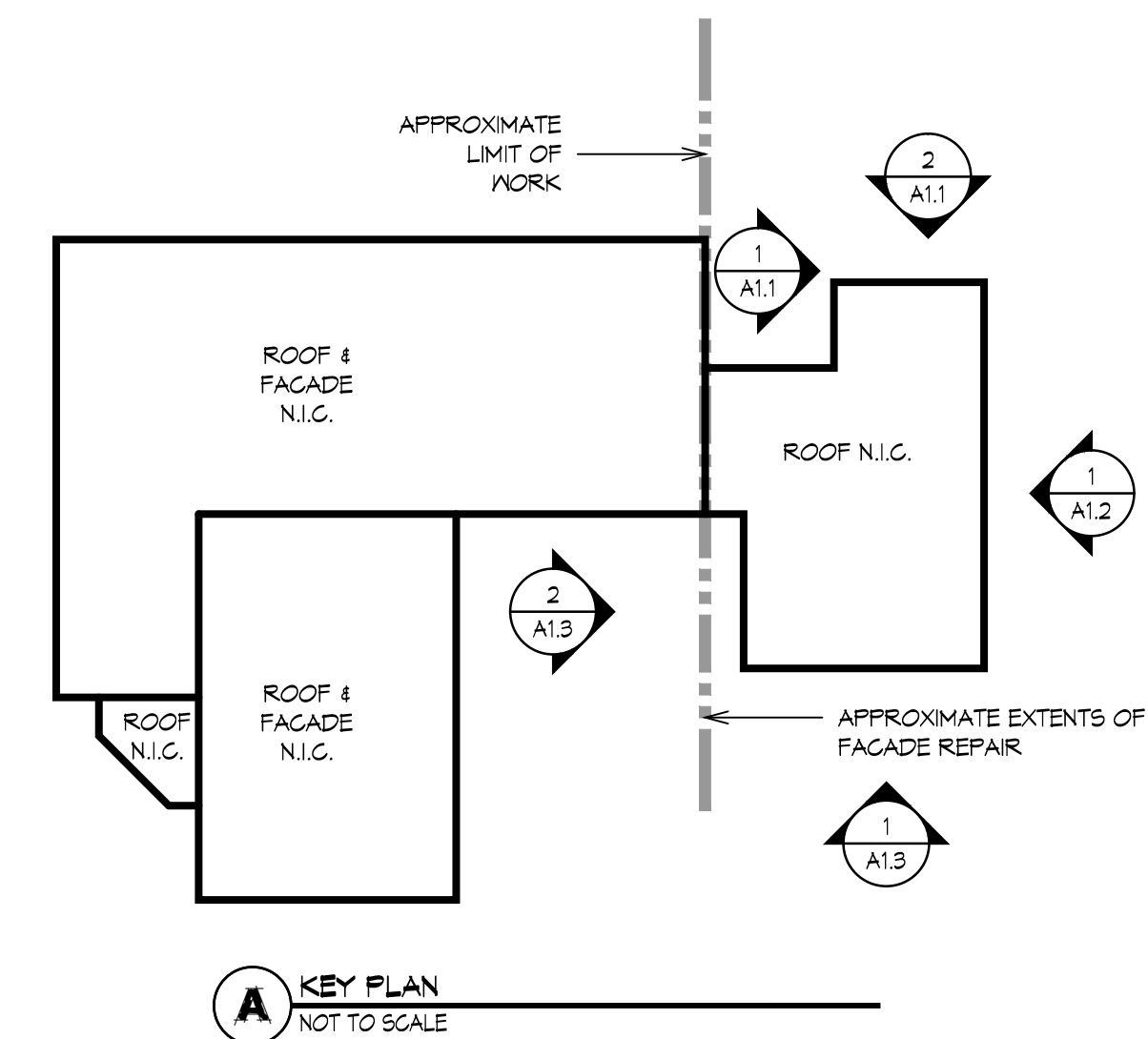
1 EXTERIOR ELEVATION
1/4" = 1'-0"

- ELEVATION NOTES:
 1. EXISTING HANDRAILS NOT SHOWN FOR CLARITY & ARE THEREFORE NOT IN CONTRACT.
 2. FOR CLEANING & WATERPROOFING, SEE SPECIFICATIONS

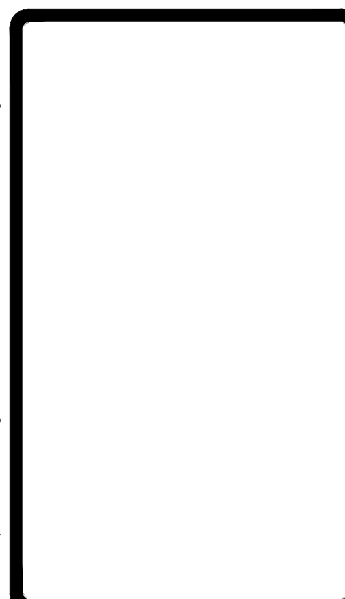
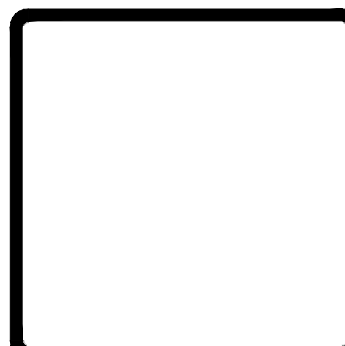


2 EXTERIOR ELEVATION
1/4" = 1'-0"

- ELEVATION NOTES:
 1. EXISTING HANDRAILS NOT SHOWN FOR CLARITY & ARE THEREFORE NOT IN CONTRACT.
 2. AT EXISTING PRECAST CONCRETE SILLS, G.C. TO TUCKPOINT PERIMETER & REPAIR EXISTING CRACKS.
 3. EXISTING SEALANT AT PERIMETER OF WINDOWS TO REMAIN. PREPARE EXISTING SURFACE FOR INSTALLATION OF SIKKO-COAT SEALANT.
 4. FOR CLEANING & WATERPROOFING, SEE SPECIFICATIONS



A KEY PLAN
NOT TO SCALE



Elements Management
 ELEMENTS MANAGEMENT
 30 BRIARCLIFF DRIVE
 HOPKINTON, MA 01748

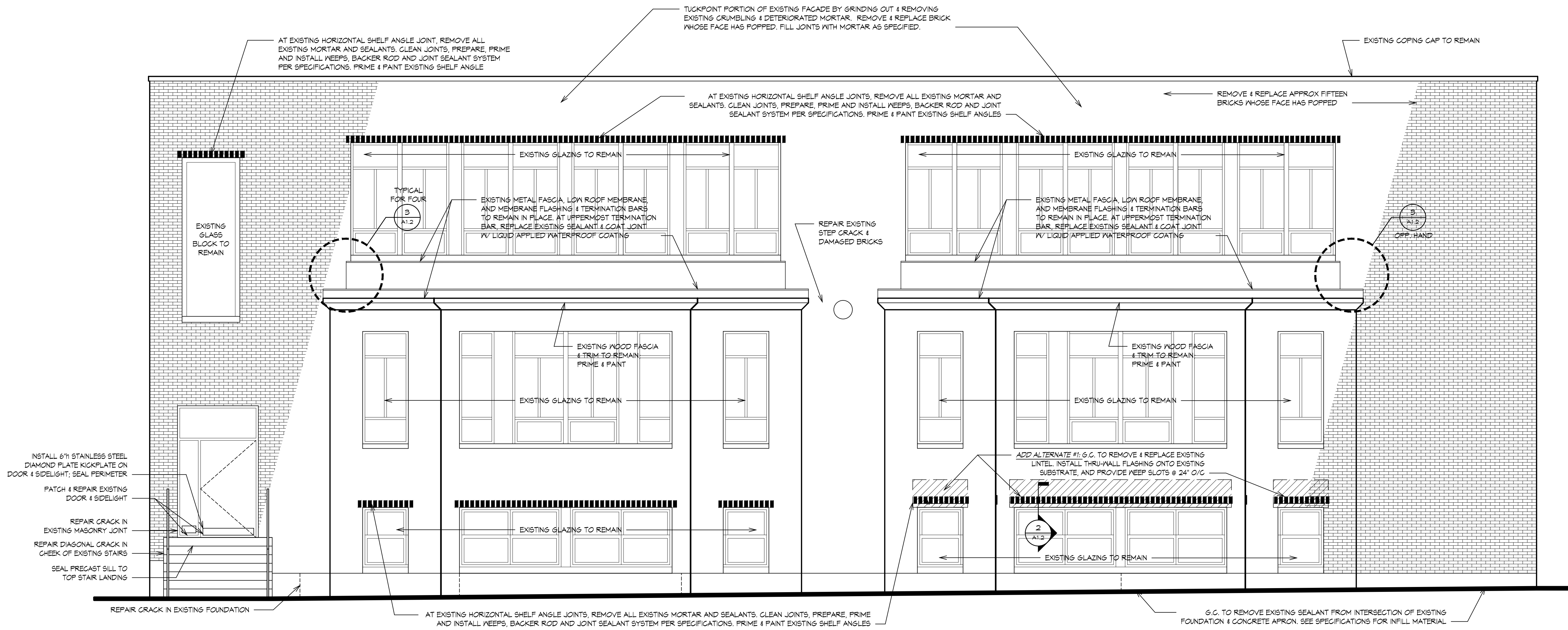
NO.	REVISIONS	DATE

EXTERIOR ELEVATIONS
 FACADE REPAIRS AT
HARDY ELEMENTARY SCHOOL
 LAKE STREET, ARLINGTON, MA

DATE	5/15/15
SCALE	AS NOTED
PROJ. NO.	---
SHEET	---

A1.1

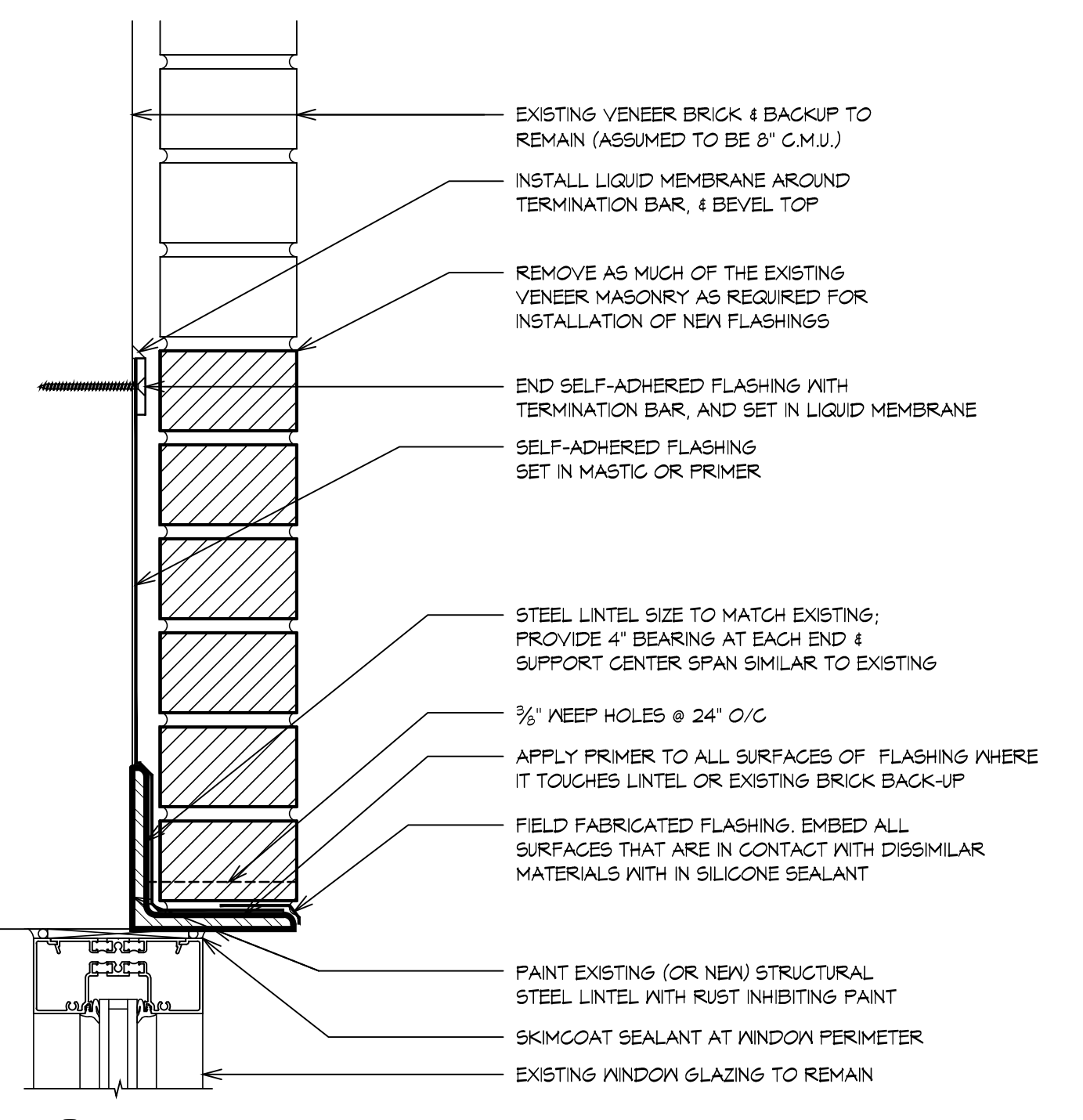
Copyright © 2015 by Elements Management. The architectural plans, drawings, specifications and other arrangements on this sheet are and shall remain the property of Elements Management. No part thereof shall be copied, distributed to others, or used in connection with any work or project, other than the specified project for which they have been prepared and developed, without the express knowledge and written consent of Elements Management.



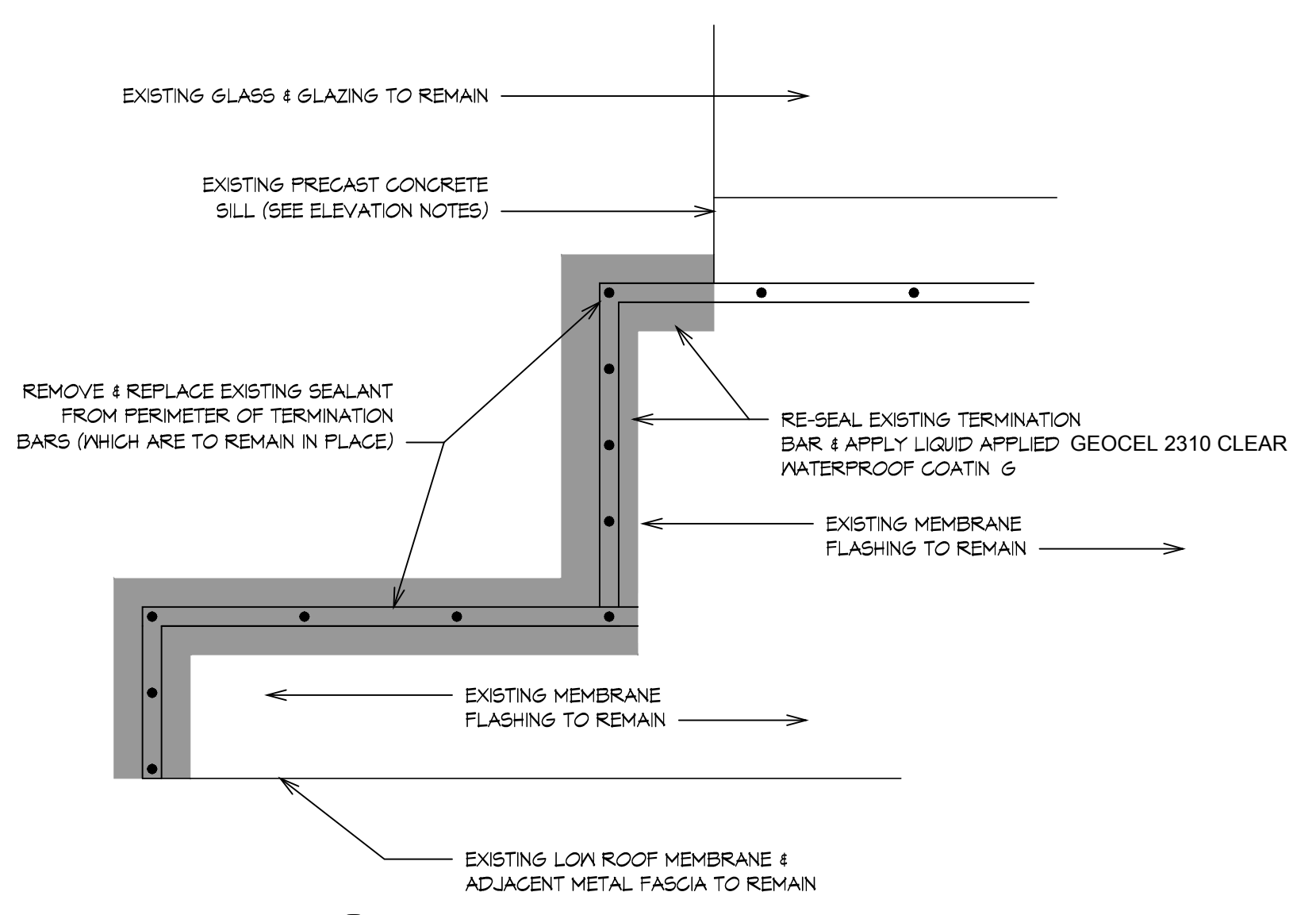
- INSTALL 6" STAINLESS STEEL DIAMOND PLATE KICKPLATE ON DOOR & SIDELIGHT; SEAL PERIMETER
- PATCH & REPAIR EXISTING DOOR & SIDELIGHT
- REPAIR CRACK IN EXISTING MASONRY JOINT
- REPAIR DIAGONAL CRACK IN CHEEK OF EXISTING STAIRS
- SEAL PRECAST SILL TO TOP STAIR LANDING

1 EXTERIOR ELEVATION
1/4" = 1'-0"

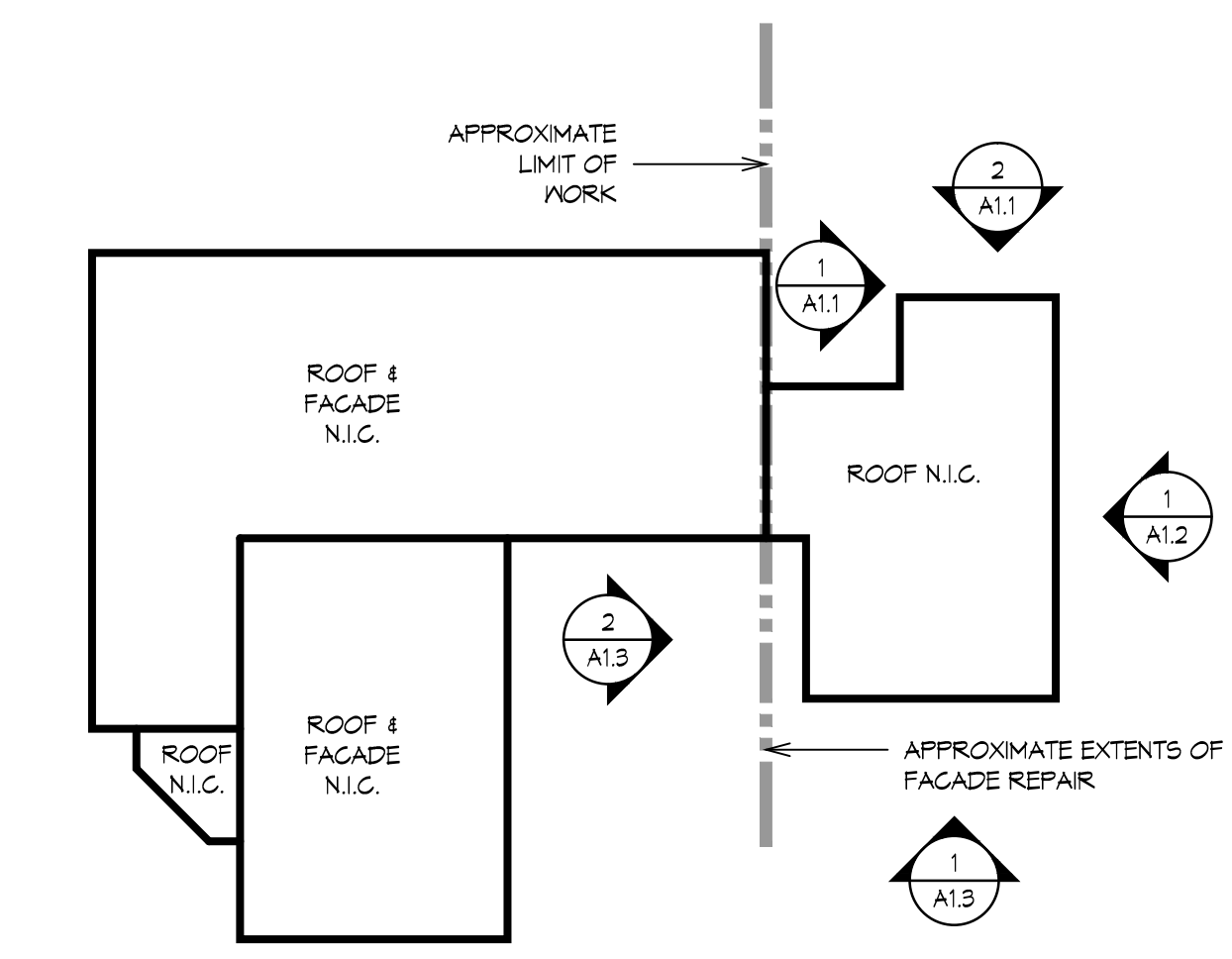
- ELEVATION NOTES:**
1. AT EXISTING PRECAST CONCRETE SILLS, G.C. TO TUCKPOINT PERIMETER & REPAIR EXISTING CRACKS.
 2. EXISTING SEALANT AT PERIMETER OF WINDOWS TO REMAIN. PREPARE EXISTING SURFACE FOR INSTALLATION OF SKIMCOAT SEALANT.
 3. FOR CLEANING & WATERPROOFING, SEE SPECIFICATIONS.



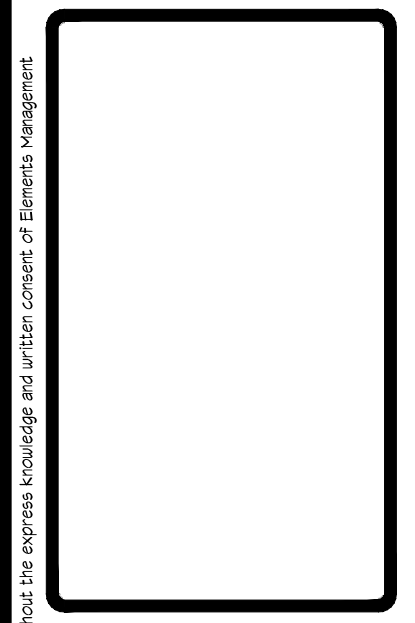
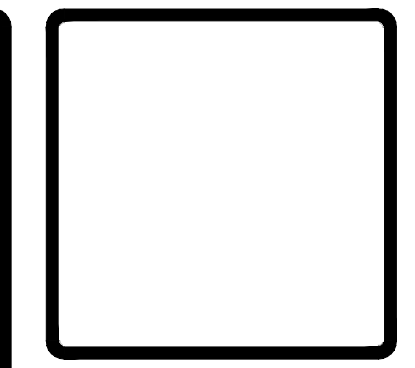
2 LINTEL REPLACEMENT DETAIL
3" = 1'-0" ADD ALTERNATE #1



3 TERMINATION BAR REPAIR DETAIL
1 1/2" = 1'-0"



A KEY PLAN
NOT TO SCALE



Elements Management

ELEMENTS MANAGEMENT
30 BRIARCLIFF DRIVE
HOPKINTON, MA 01748

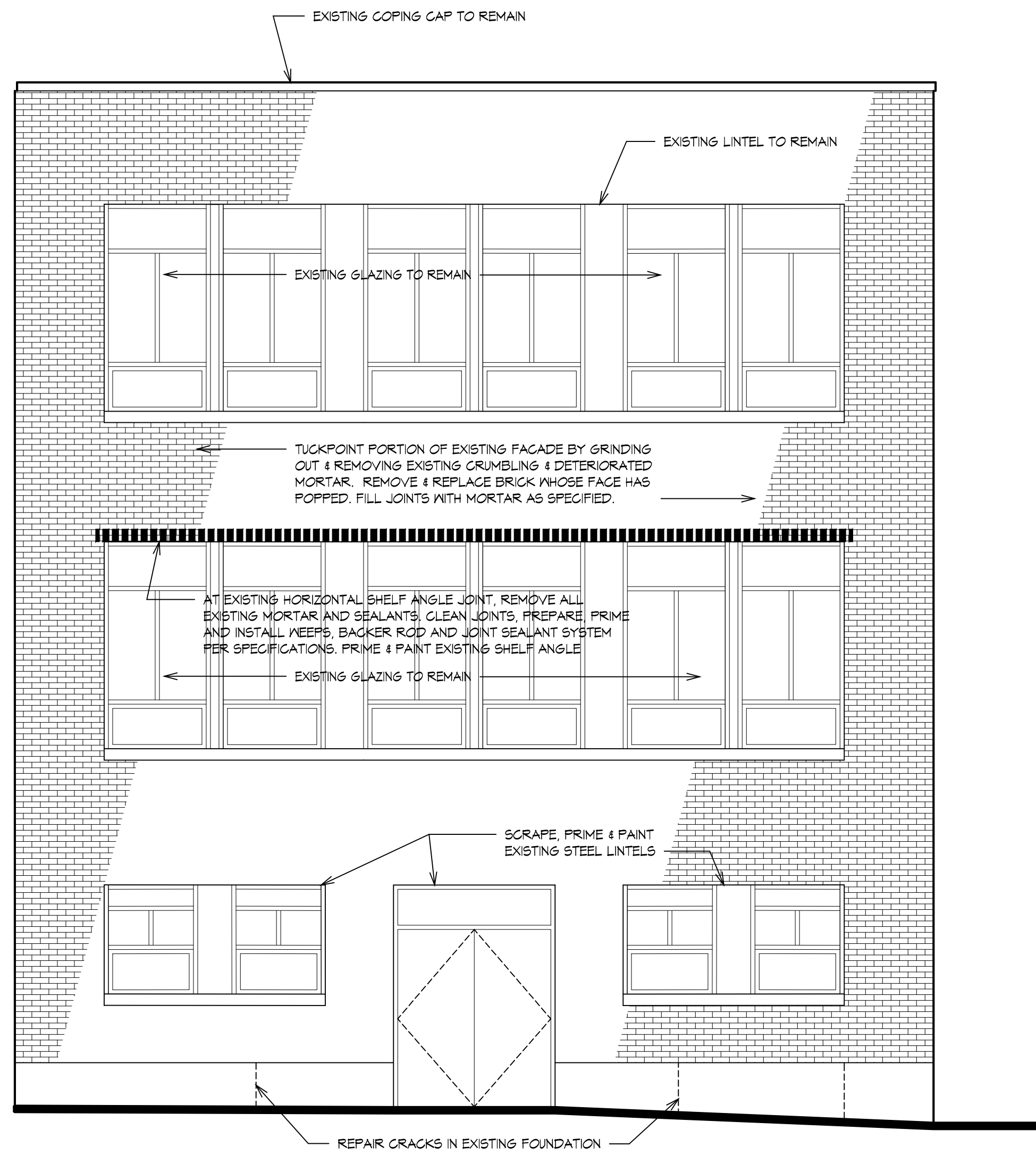
NO.	REVISIONS	DATE

EXTERIOR ELEVATIONS
FACADE REPAIRS AT
HARDY ELEMENTARY SCHOOL
LAKE STREET, ARLINGTON, MA

DATE	5/15/15
SCALE	AS NOTED
PROJ. NO.	---
SHEET	---

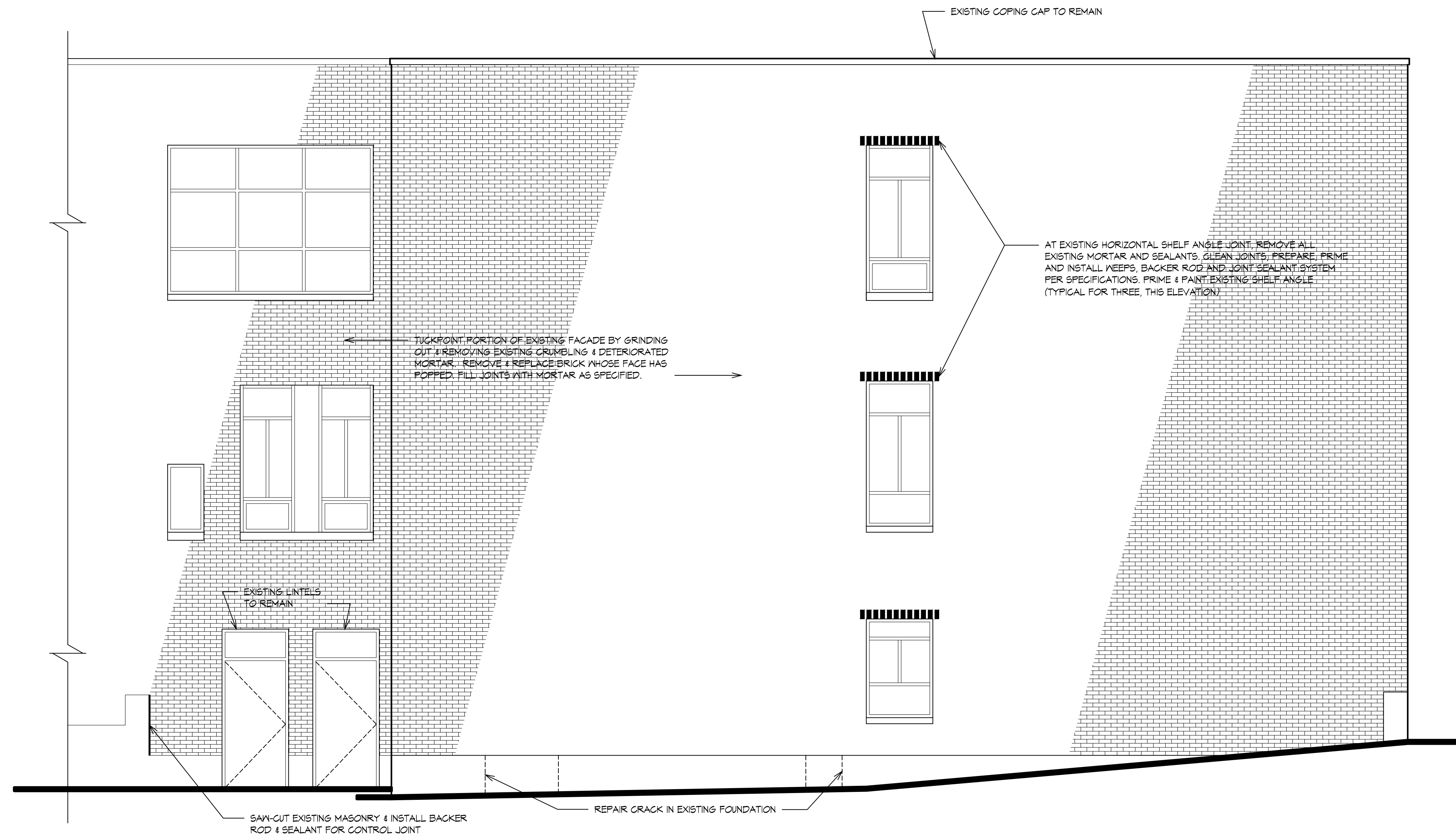
A1.2

Copyright © 2015 by Elements Management. The architectural plans, drawings, design, specifications and other arrangements on this sheet are and shall remain the property of Elements Management. No part thereof shall be copied, distributed to others, or used in connection with any work or project, other than that specified in the project for which they were prepared and developed, without the express knowledge and written consent of Elements Management.



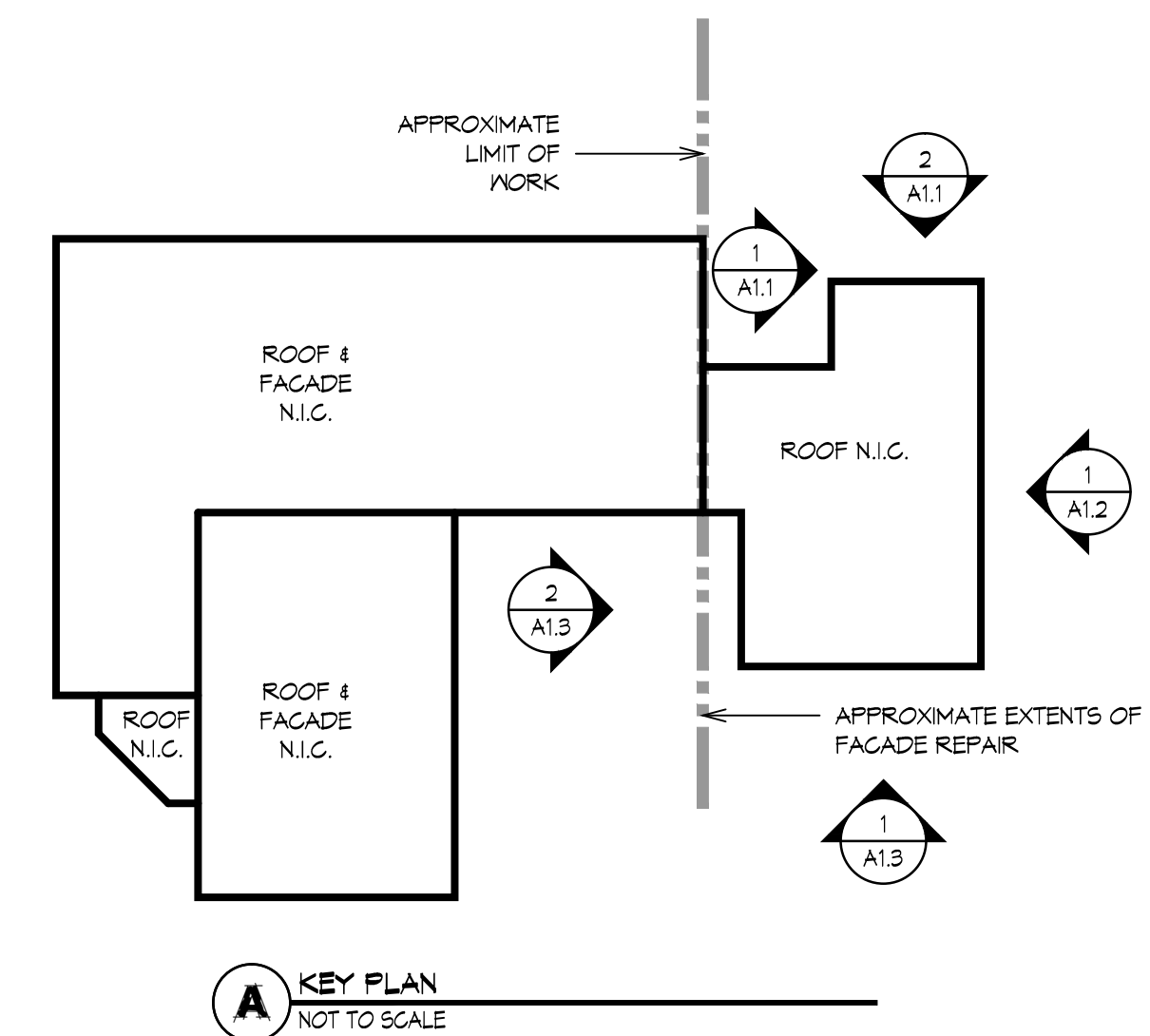
1 EXTERIOR ELEVATION
1/4" = 1'-0"

- ELEVATION NOTES:**
1. AT EXISTING PRECAST CONCRETE SILLS, G.G. TO TUCKPOINT PERIMETER & REPAIR EXISTING CRACKS.
 2. EXISTING SEALANT AT PERIMETER OF WINDOWS TO REMAIN. PREPARE EXISTING SURFACE FOR INSTALLATION OF SKIMCOAT SEALANT
 4. FOR CLEANING & WATERPROOFING, SEE SPECIFICATIONS



2 EXTERIOR ELEVATION
1/4" = 1'-0"

- ELEVATION NOTES:**
1. AT EXISTING PRECAST CONCRETE SILLS, G.G. TO TUCKPOINT PERIMETER & REPAIR EXISTING CRACKS.
 2. EXISTING SEALANT AT PERIMETER OF WINDOWS TO REMAIN. PREPARE EXISTING SURFACE FOR INSTALLATION OF SKIMCOAT SEALANT
 4. FOR CLEANING & WATERPROOFING, SEE SPECIFICATIONS



Copyright © 2015 by Elements Management. The architectural plans, drawings, specifications and other arrangements on this sheet are and shall remain the property of Elements Management. No part thereof shall be copied, distributed to others, or used in connection with any work or project, other than the specified project for which they have been prepared and developed, without the express knowledge and written consent of Elements Management.

Elements Management
ELEMENTS MANAGEMENT
30 BRIARCLIFF DRIVE
HOPKINTON, MA 01748

NO.	REVISIONS	DATE

EXTERIOR ELEVATIONS
FACADE REPAIRS AT
HARDY ELEMENTARY SCHOOL
LAKE STREET, ARLINGTON, MA

DATE	5/15/15
SCALE	AS NOTED
PROJ. NO.	---
SHEET	---

A1.3