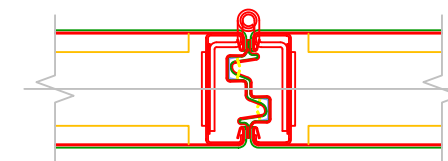
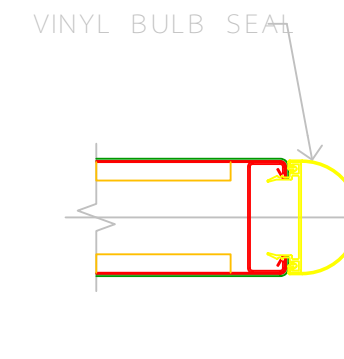


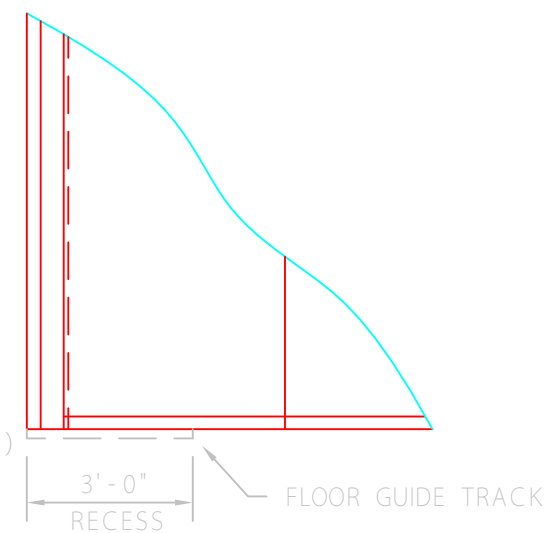
STACK JAMB



HINGED PANEL JOINT



BULB SEAL



PARTIAL ELEVATION - STACK END

AUTOMATIC BOTTOM SEAL PROVIDES 2" OPERATING CLEARANCE (+.50" / -1.50")

ACOUSTI-SEAL 933E

CLOSURE METHOD	SIDE JAMB (ELECTRIC WALL)
FABRICATION HEIGHT	15' - 11"
TRACK SYSTEM	#14
BOTTOM SEALS	2" (51MM) AUTOMATIC
PANEL ACOUSTICAL RATING	50 STC
HANGING WEIGHT	8 (lbs./sq.ft.)
PANEL SKIN/FACING	STEEL
HINGE COLOR	TO BE ADVISED
TRIM COLOR	TO BE ADVISED
PANEL FINISH SELECTION	VINYL TO BE ADVISED

JOB NAME: GIBBS SCHOOL

GYMNASIUM

LOCATION: ARLINGTON, MA

ARCHITECT: BARRETT ARCHITECTS

ARCHITECT:

CONTRACTOR: PAPPAS CO

DISTRIBUTOR: THE PAPPAS CO., INC.

DATE	REV	ISSUED FOR	DRN
04/30/15	0	APPROVAL	MPM
	1		
	2		
	3		
	4		
	5		
	6		

**DETAIL SHEET
OP-01**

DRAWING NO: 052014111854 - 01

CAD REF NO.

ORDER NO.

SHEET NO. 3 OF: 4

ARCHITECT / GENERAL CONTRACTOR NOTES

1. MINIMUM DIMENSIONS PROVIDE FOR CLEARANCE FROM ALL ADJACENT CONSTRUCTION/FIXTURES FOR ADJUSTMENT, OPERATION, AND SAFETY.
2. GENERAL CONTRACTOR SHALL BE RESPONSIBLE FOR ALL STRUCTURAL SUPPORT, ADJOINING CONSTRUCTION AND TRIM.
3. WALL CONSTRUCTION AT JAMBS MUST BE ADEQUATE FOR SECURING JAMBS.
4. AFS INDICATES ADJUSTABLE FIXED SEALS.
 T INDICATES OPERABLE PANEL ACCESS HOLE.
 ▼ INDICATES BOTTOM SEAL OPERATOR HANDLE.
5. HINGE POINTS ARE SHOWN FOR DIAGRAMMATIC PURPOSES ONLY.

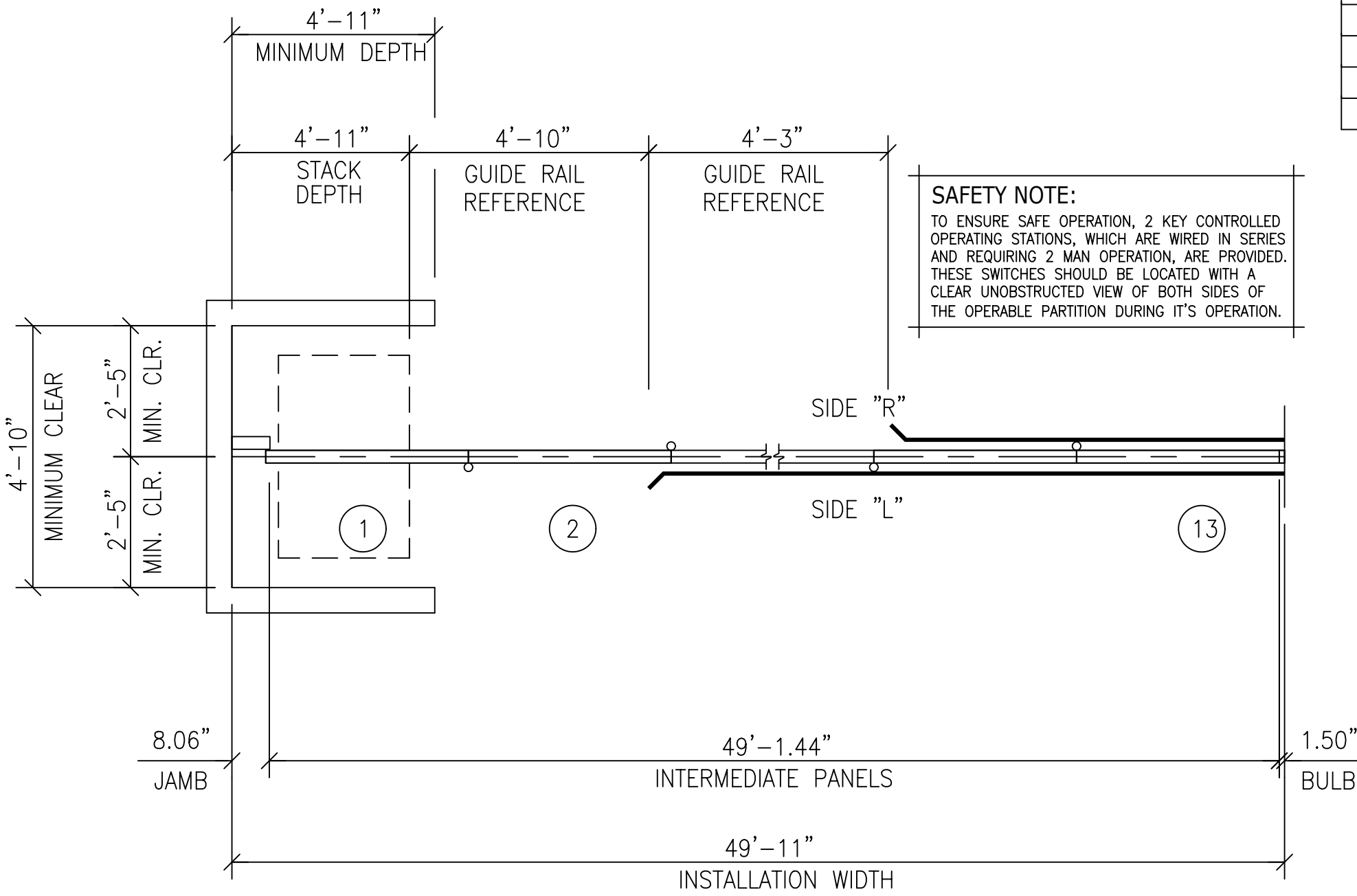
PANEL SCHEDULE

PANEL	WIDTH	SIDE R	SIDE L	PASSDOOR
1	3'-2.12"			
2	3'-2.12"			
3	3'-2.12"			
4	3'-7.06"			
5	4'-0"			PD1
6	4'-0"			
7	4'-0"			
8	4'-0"			
9	4'-0"			
10	4'-0"			
11	4'-0"			PD2
12	4'-0"			
13	4'-0"			

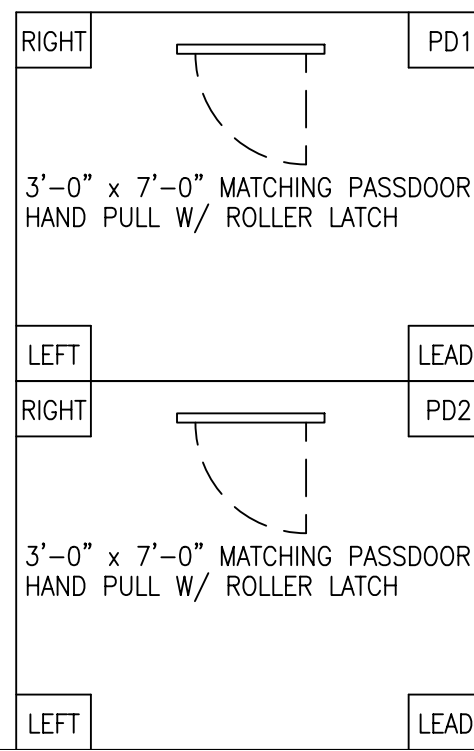
MODERNFOLD
A DORMA Group Company

ACOUSTI-SEAL 933E

CLOSURE METHOD	SIDE JAMB (ELECTRIC WALL)
FABRICATION HEIGHT	15'-11"
TRACK SYSTEM	#14
BOTTOM SEALS	2" (51MM) AUTOMATIC
PANEL ACOUSTICAL RATING	50 STC
HANGING WEIGHT	8 (lbs./sq.ft.)
PANEL SKIN/FACING	STEEL
HINGE COLOR	TO BE ADVISED
TRIM COLOR	TO BE ADVISED
PANEL FINISH SELECTION	VINYL
	TO BE ADVISED



SAFETY NOTE:
 TO ENSURE SAFE OPERATION, 2 KEY CONTROLLED OPERATING STATIONS, WHICH ARE WIRED IN SERIES AND REQUIRING 2 MAN OPERATION, ARE PROVIDED. THESE SWITCHES SHOULD BE LOCATED WITH A CLEAR UNOBSTRUCTED VIEW OF BOTH SIDES OF THE OPERABLE PARTITION DURING IT'S OPERATION.



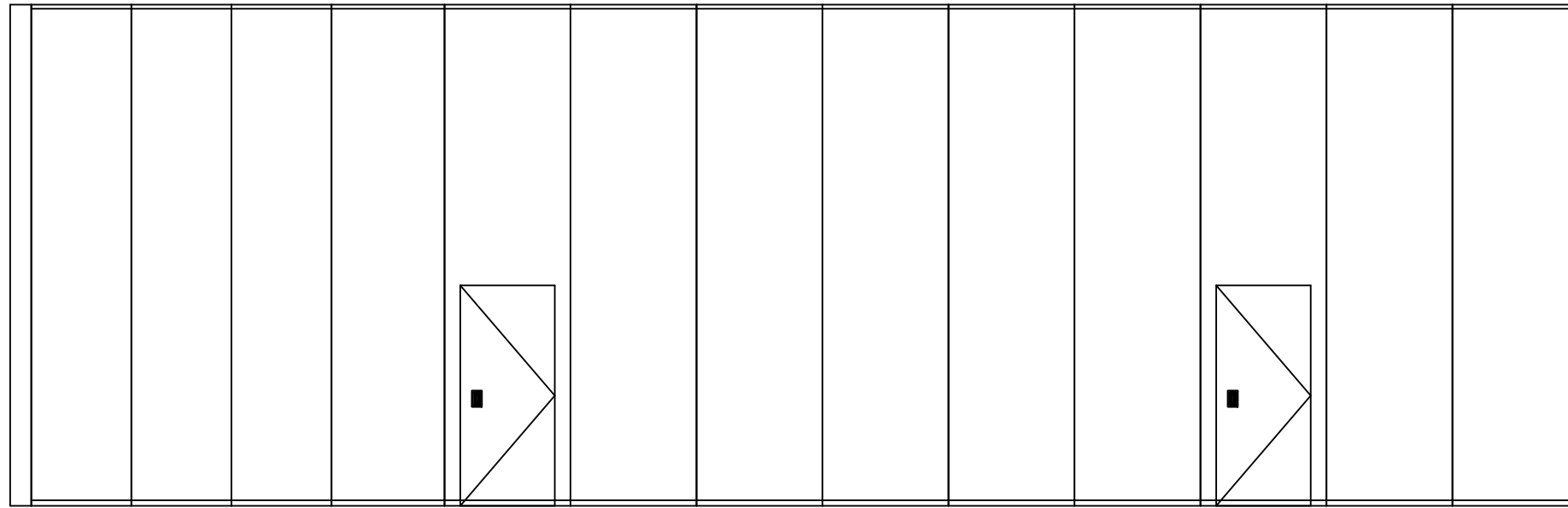
JOB NAME: GIBBS SCHOOL
 GYMNASIUM
 LOCATION: ARLINGTON, MA
 ARCHITECT: BARRETT ARCHITECTS
 ARCHITECT:
 CONTRACTOR: PAPPAS CO
 DISTRIBUTOR: THE PAPPAS CO., INC.

DATE	REV	ISSUED FOR	DRN.
04/30/15	0	APPROVAL	MPM
	1		
	2		
	3		
	4		
	5		
	6		

PANEL LAYOUT OP-01

DRAWING No. 052014111854-01
 CAD REF NO.
 ORDER NO.
 SHEET NO. 1 OF 4

PANEL PLAN



PANEL ELEVATION - SIDE "L"

ACOUSTI-SEAL 933E

CLOSURE METHOD: SIDE JAMB (ELECTRIC WALL)
 FABRICATION HEIGHT: 15'-11"
 TRACK SYSTEM: #14
 BOTTOM SEALS: 2" (51MM) AUTOMATIC
 PANEL ACOUSTICAL RATING: 50 STC
 HANGING WEIGHT: 8 (lbs./sq.ft.)
 PANEL SKIN/FACING: STEEL
 HINGE COLOR: TO BE ADVISED
 TRIM COLOR: TO BE ADVISED
 PANEL FINISH: VINYL
 SELECTION: TO BE ADVISED

JOB NAME: GIBBS SCHOOL

GYMNASIUM

LOCATION: ARLINGTON, MA

ARCHITECT: BARRETT ARCHITECTS

ARCHITECT:

CONTRACTOR: PAPPAS CO

DISTRIBUTOR: THE PAPPAS CO., INC.

DATE	REV	ISSUED FOR	DRN.
04/30/15	0	APPROVAL	MPM
	1		
	2		
	3		
	4		
	5		
	6		

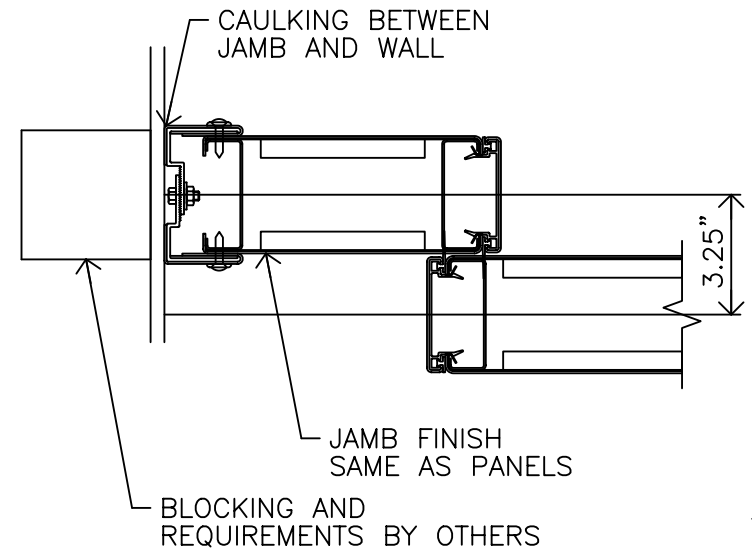
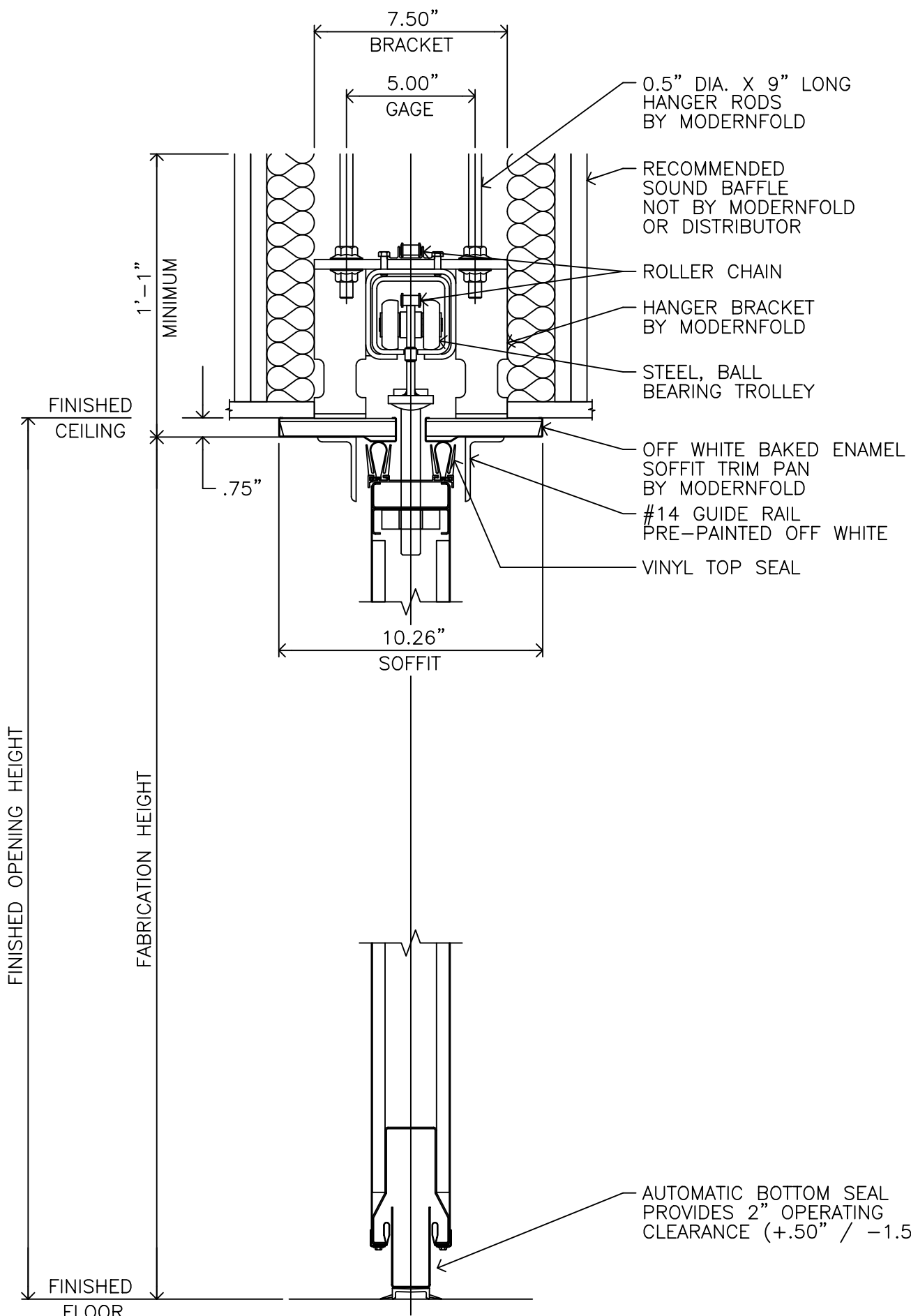
**PANEL ELEVATION
OP-01**

DRAWING NO. 052014111854-01

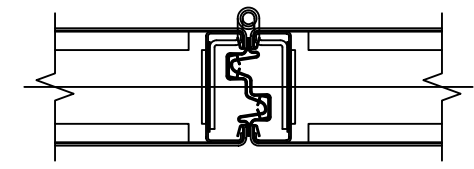
CAD REF NO.

ORDER NO.

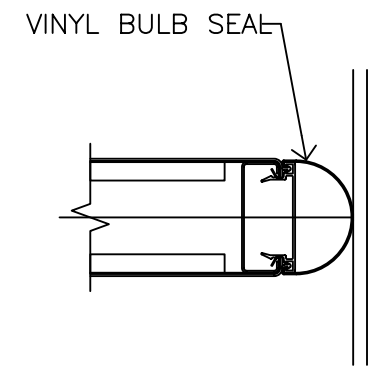
SHEET NO. 2 OF: 4



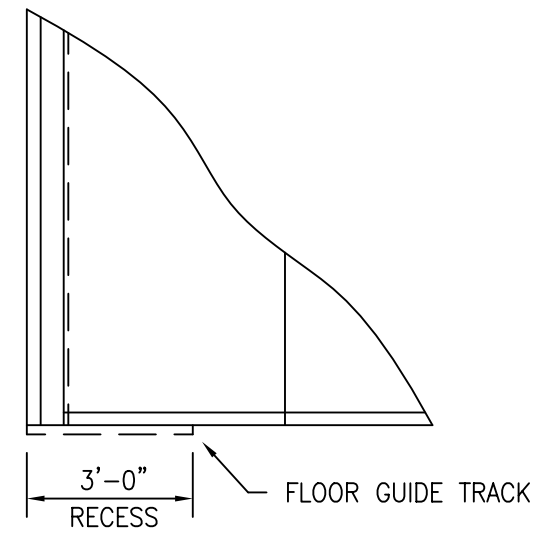
STACK JAMB



HINGED PANEL JOINT



BULB SEAL



PARTIAL ELEVATION - STACK END

ACOUSTI-SEAL 933E

CLOSURE METHOD	SIDE JAMB (ELECTRIC WALL)
FABRICATION HEIGHT	15'-11"
TRACK SYSTEM	#14
BOTTOM SEALS	2" (51MM) AUTOMATIC
PANEL ACOUSTICAL RATING	50 STC
HANGING WEIGHT	8 (lbs./sq.ft.)
PANEL SKIN/FACING	STEEL
HINGE COLOR	TO BE ADVISED
TRIM COLOR	TO BE ADVISED
PANEL FINISH SELECTION	VINYL TO BE ADVISED

JOB NAME:	GIBBS SCHOOL
	GYMNASIUM
LOCATION:	ARLINGTON, MA
ARCHITECT:	BARRETT ARCHITECTS
ARCHITECT:	
CONTRACTOR:	PAPPAS CO
DISTRIBUTOR:	THE PAPPAS CO., INC.

DATE	REV	ISSUED FOR	DRN.
04/30/15	0	APPROVAL	MPM
	1		
	2		
	3		
	4		
	5		
	6		

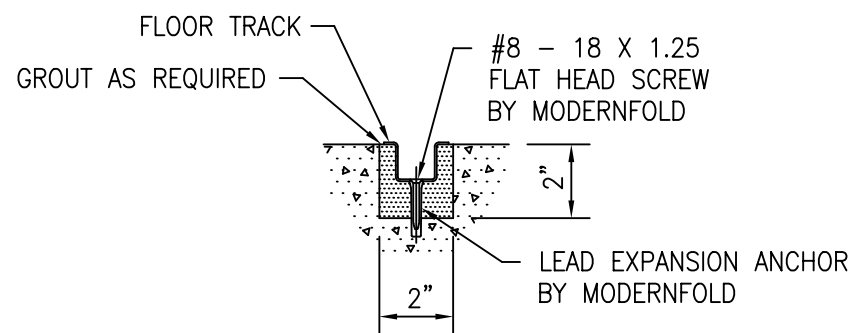
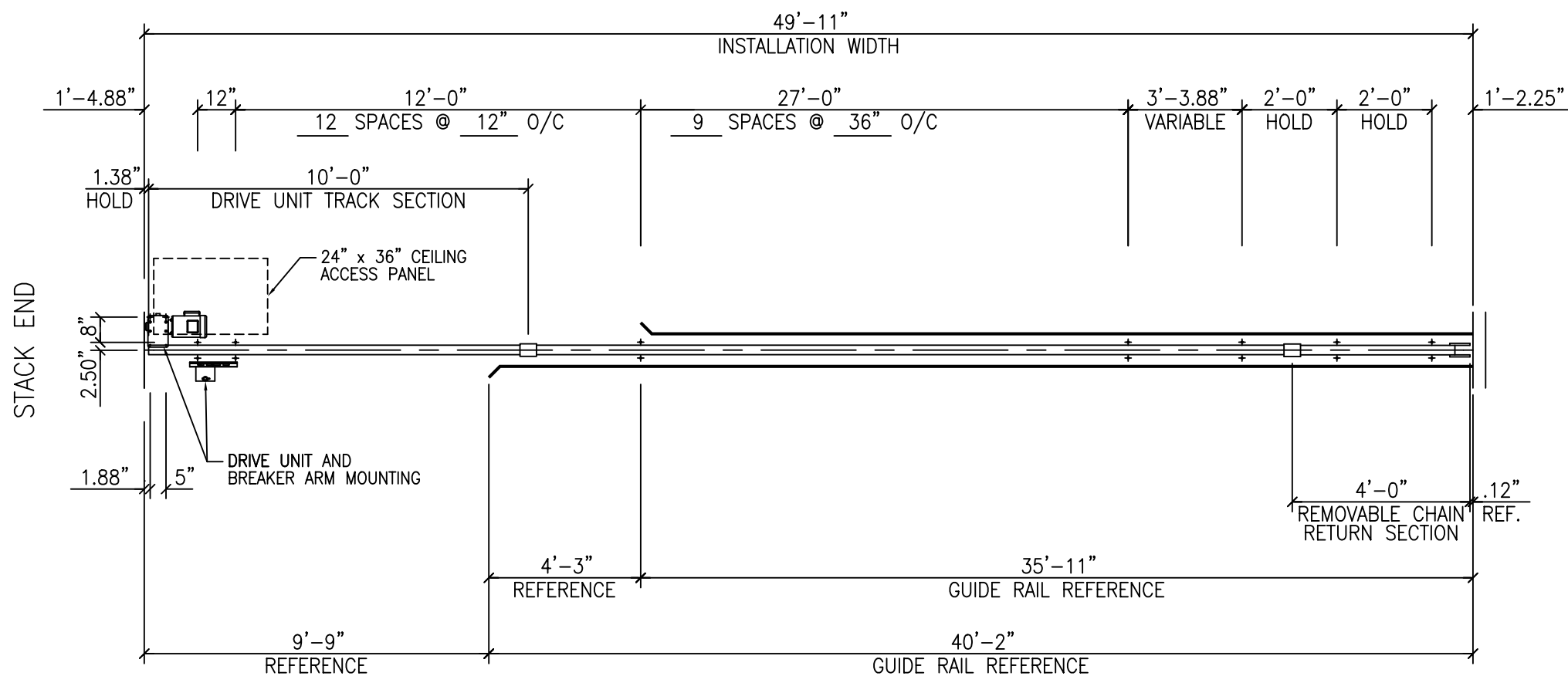
**DETAIL SHEET
OP-01**

DRAWING NO. 052014111854-01

CAD REF NO.

ORDER NO.

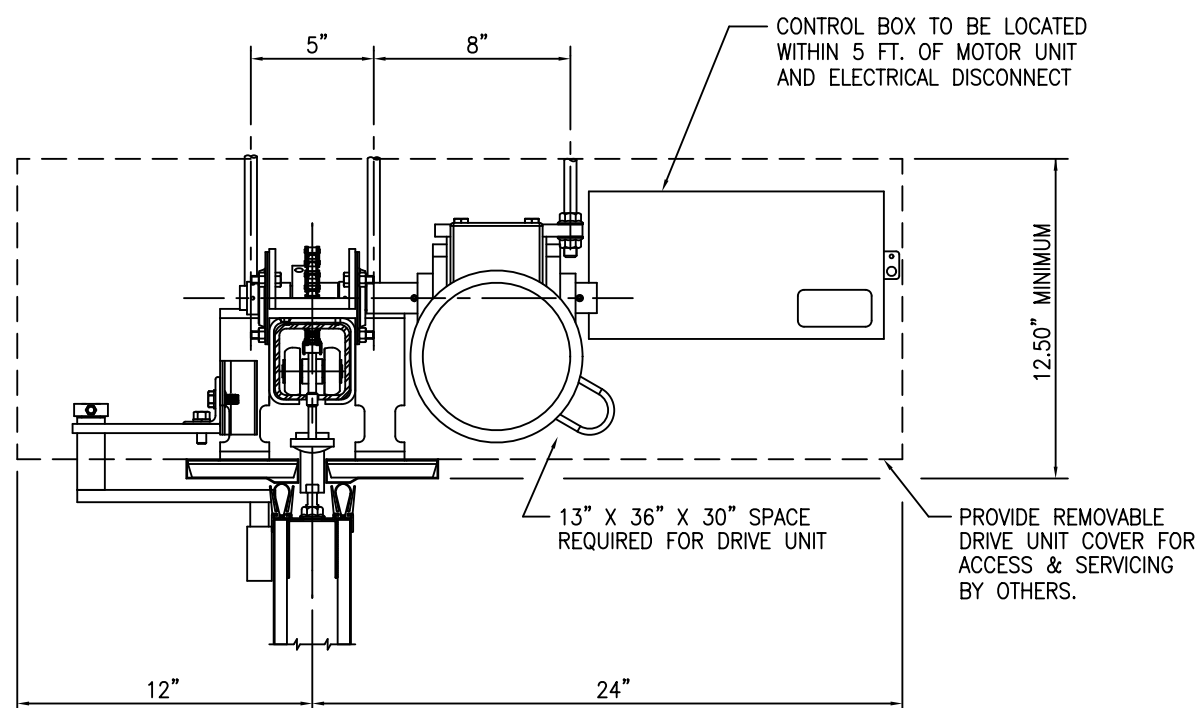
SHEET NO. 3 OF 4



FLOOR GUIDE TRACK

NOTES:

1. PUNCH OR DRILL .56" DIA. HOLES, 2.50" EACH SIDE OF CENTERLINE, 5.00" GAGE, AT ALL LOCATIONS. AS NOTED.
2. DRIVE UNIT TO BE 1 HP, 208-230 VOLT, 60 CYCLE, 3 PHASE, 5 FULL LOAD AMPS, WITH TWO (2) KEY CONTROLLED OPERATING STATIONS.
3. CONTROL STATION #112220
4. 9" HANGER RODS
5. DISCONNECT BOX AND POWER TO DISCONNECT BOX BY OTHERS.



ACOUSTI-SEAL 933E

CLOSURE METHOD	SIDE JAMB (ELECTRIC WALL)
FABRICATION HEIGHT	15'-11"
TRACK SYSTEM	#14
BOTTOM SEALS	2" (51MM) AUTOMATIC
PANEL ACOUSTICAL RATING	50 STC
HANGING WEIGHT	8 (lbs./sq.ft.)
PANEL SKIN/FACING	STEEL
HINGE COLOR	TO BE ADVISED
TRIM COLOR	TO BE ADVISED
PANEL FINISH SELECTION	VINYL TO BE ADVISED

JOB NAME: GIBBS SCHOOL

GYMNASIUM

LOCATION: ARLINGTON, MA

ARCHITECT: BARRETT ARCHITECTS

ARCHITECT:

CONTRACTOR: PAPPAS CO

DISTRIBUTOR: THE PAPPAS CO., INC.

DATE	REV	ISSUED FOR	DRN.
04/30/15	0	APPROVAL	MPM
	1		
	2		
	3		
	4		
	5		
	6		

**TRACK LAYOUT
OP-01**

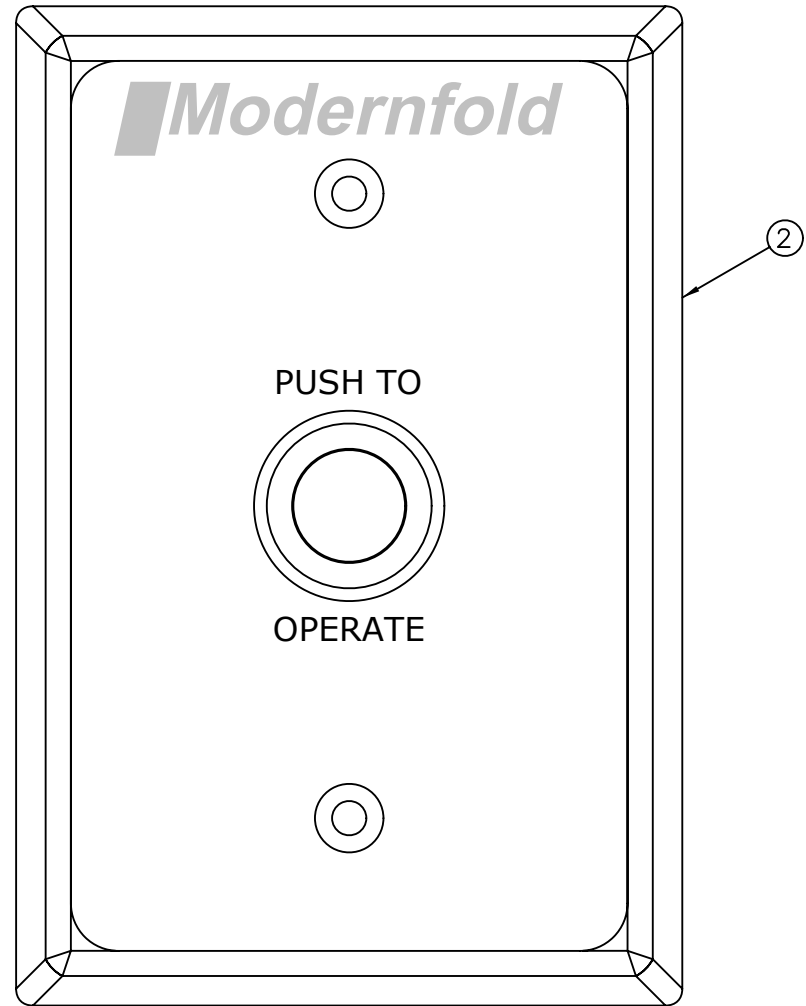
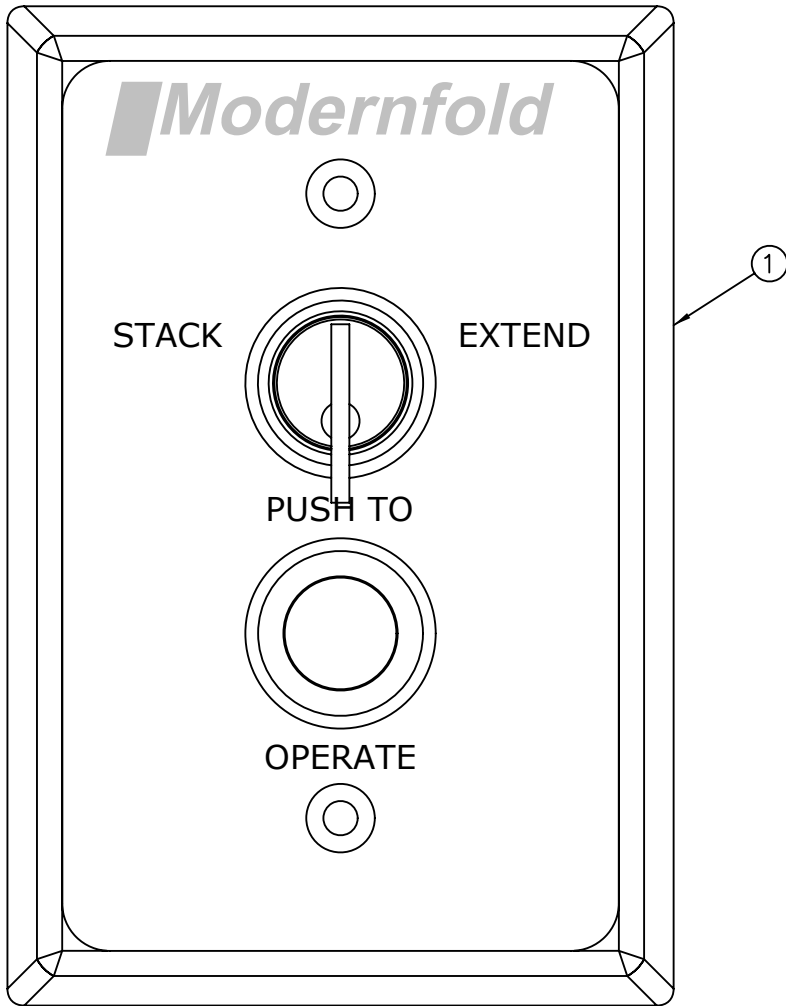
DRAWING NO. 052014111854-01

CAD REF NO.

ORDER NO.

SHEET NO. 4 OF 4

REVISION HISTORY			
REV	DESCRIPTION	DATE	EN

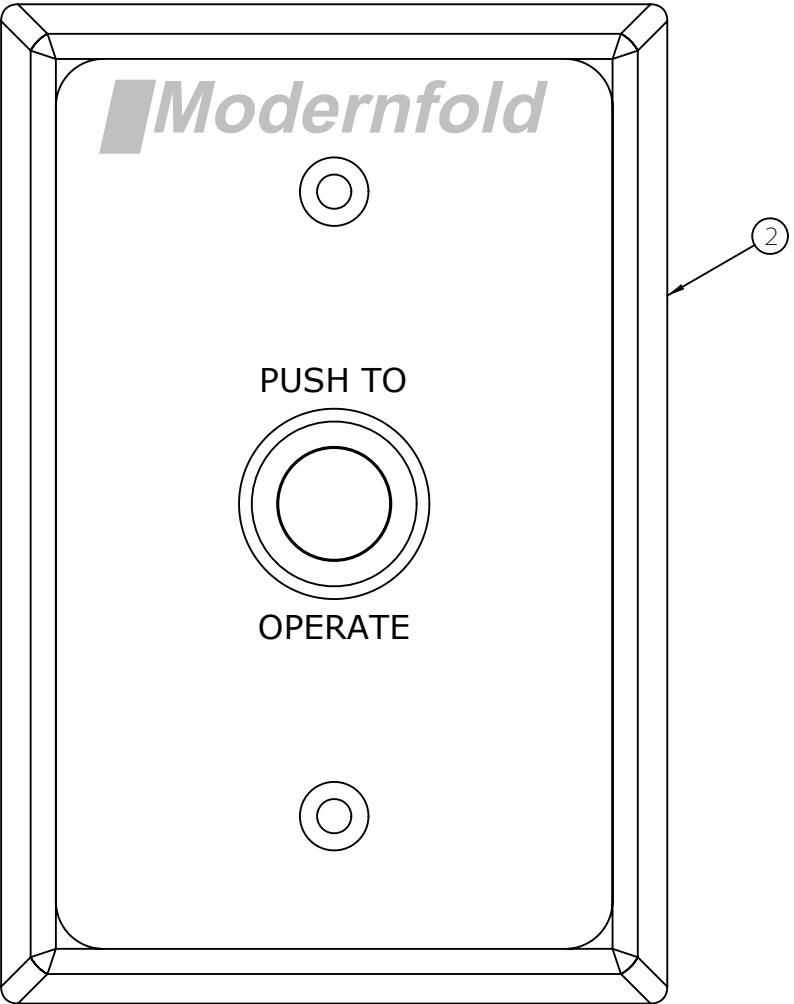
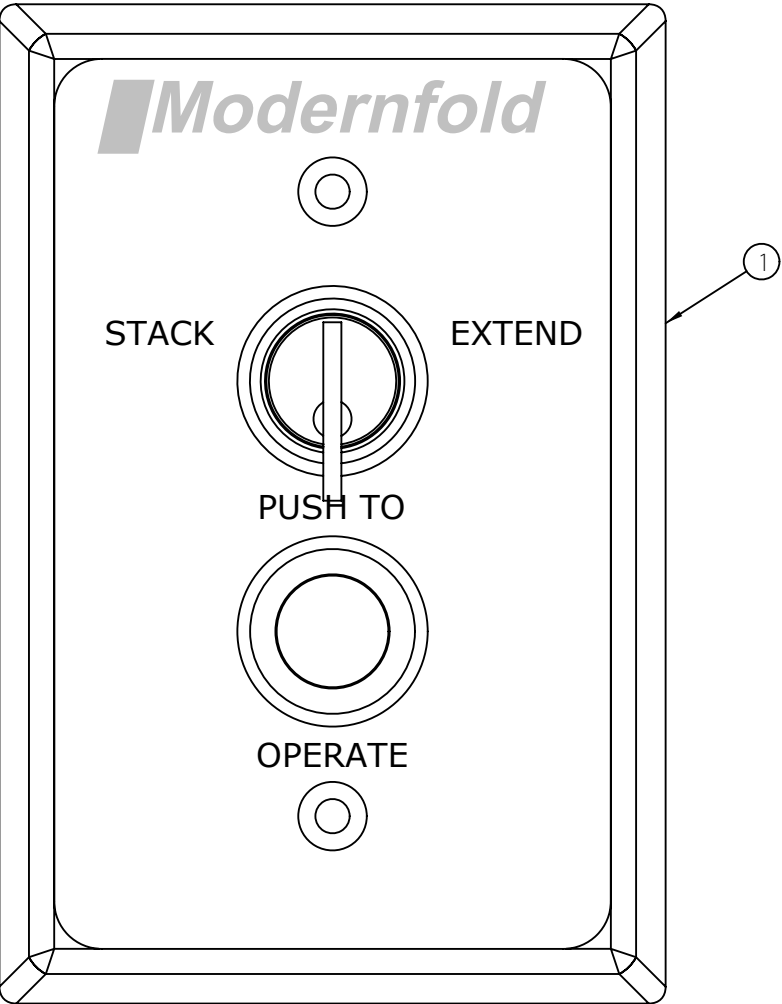


NOTES:

2	1	112130-006	ASSEMBLY, KEYSWITCH	933E LEAD	
1	1	112130-005	ASSEMBLY, KEYSWITCH	933 - STACK	
ITEM	QTY.	PART NO.	DESCRIPTION	REFERENCE	
REV A		EN 1005	APPD MB	DATE 18MY10	TITLE
RELEASED					KEYSWITCH APPLICATION DRAWING PRELIMINARY
TOLERANCE UNLESS OTHERWISE SPECIFIED		TWO PLACE	±.02		
		THREE PLACE	±.010		
		ANGLES		±1	
MATERIAL FINISH				SCALE 1:1	PURCHASED <input checked="" type="checkbox"/> MANUFACTURED <input type="checkbox"/>
				EN 1005	DWG NO. 112220
				DATE 14MY10	SHEET 1 OF 1

112220-001	KEYSWITCH / PUSHBUTTON - 933E
PART NO.	DESCRIPTION

REVISION HISTORY			
REV	DESCRIPTION	DATE	EN

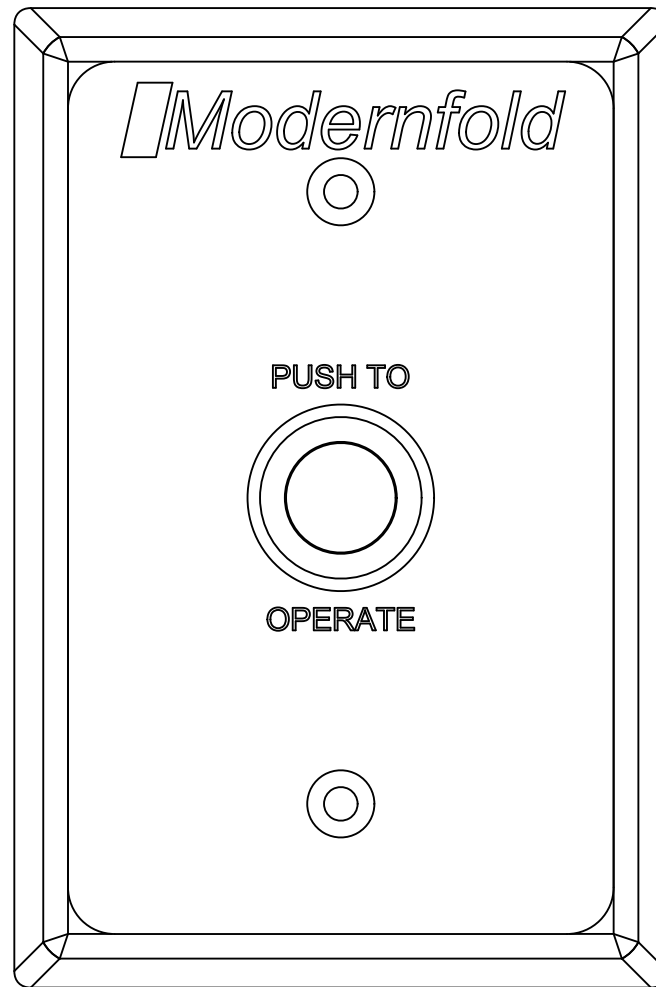
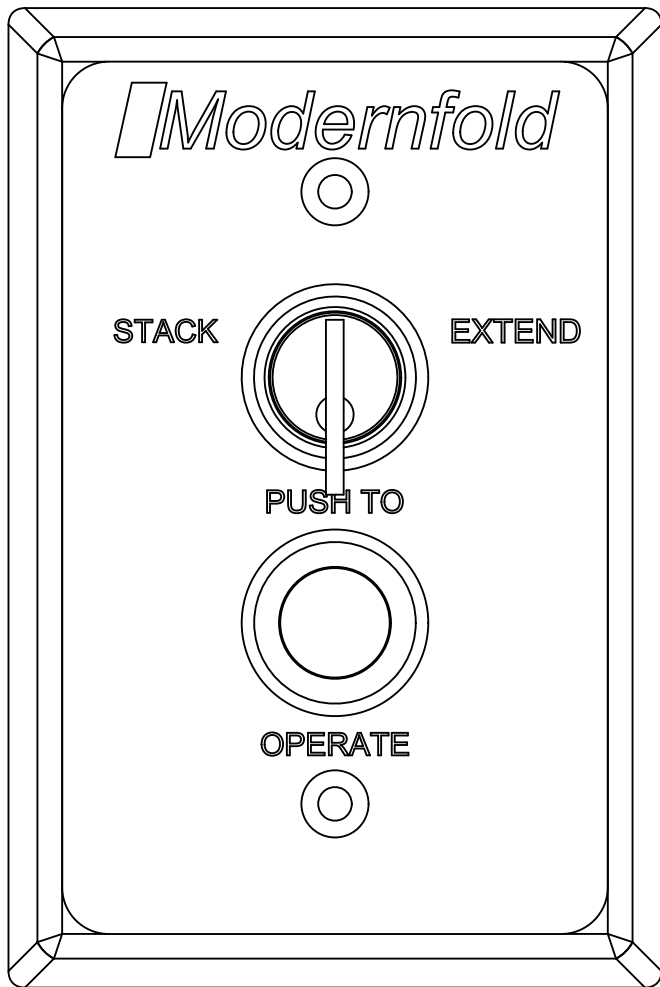


NOTES:

2	1	112130-006	ASSEMBLY, KEYSWITCH	933E LEAD
1	1	112130-005	ASSEMBLY, KEYSWITCH	933 - STACK
ITEM	QTY.	PART NO.	DESCRIPTION	REFERENCE
REV	A	EN 1005	APPD MB	DATE 18MY10
RELEASED				TITLE
				KEYSWITCH APPLICATION DRAWING PRELIMINARY
TOLERANCE UNLESS OTHERWISE SPECIFIED		TWO PLACE	±.02	
		THREE PLACE	±.010	
		ANGLES		±1°
MATL	FINISH			SCALE
				1:1
				PURCHASED
				MANUFACTURED
				DWG NO.
				112220
				DRAWN
				MB
				DATE
				14MY10
				SHEET
				1 OF 1

112220-001	KEYSWITCH / PUSHBUTTON - 933E
PART NO.	DESCRIPTION

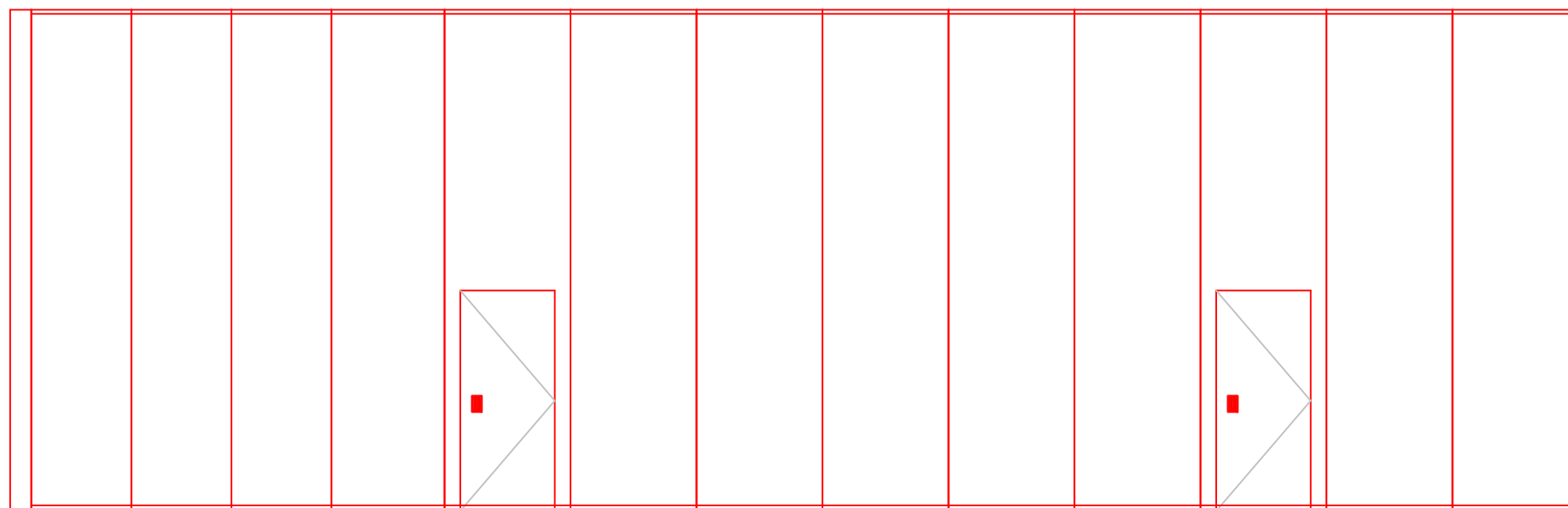
REVISION HISTORY			
REV	DESCRIPTION	DATE	EN



NOTES:

2	1	112130-006	ASSEMBLY, KEYSWITCH	933E LEAD
1	1	112130-005	ASSEMBLY, KEYSWITCH	933 - STACK
ITEM	QTY.	PART NO.	DESCRIPTION	REFERENCE
REV A		EN1005	APP MB	DATE 18MY10
RELEASED				TITLE
				KEYSWITCH
				APPLICATION DRAWING
				PRELIMINARY
TOLERANCE UNLESS OTHERWISE SPECIFIED		TWO PLACE ±.02	THREE PLACE ±.010	SCALE
		ANGLES ±1°		1:1
MATERIAL FINISH				PURCHASED
				MANUFACTURED
				DWG NO.
				112220
				DRAWN MB
				DATE 18MY10
				OF %Number of S

112220-001	KEYSWITCH / PUSHBUTTON - 933E
PART NO.	DESCRIPTION



PANEL ELEVATION - SIDE "L"

ACOUSTI-SEAL 933E

CLOSURE METHOD	SIDE JAMB (ELECTRIC WALL)
FABRICATION HEIGHT	15' - 11"
TRACK SYSTEM	#14
BOTTOM SEALS	2" (51MM) AUTOMATIC
PANEL ACOUSTICAL RATING	50 STC
HANGING WEIGHT	8 (lbs./sq.ft.)
PANEL SKIN/FACING	STEEL
HINGE COLOR	TO BE ADVISED
TRIM COLOR	TO BE ADVISED
PANEL FINISH SELECTION	VINYL TO BE ADVISED

JOB NAME: GIBBS SCHOOL

GYMNASIUM

LOCATION: ARLINGTON, MA

ARCHITECT: BARRETT ARCHITECTS

ARCHITECT:

CONTRACTOR: PAPPAS CO

DISTRIBUTOR: THE PAPPAS CO., INC.

DATE	REV	ISSUED FOR	DRN
04/30/15	0	APPROVAL	MPM
	1		
	2		
	3		
	4		
	5		
	6		

**PANEL ELEVATION
OP-01**

DRAWING NO: 052014111854 - 01

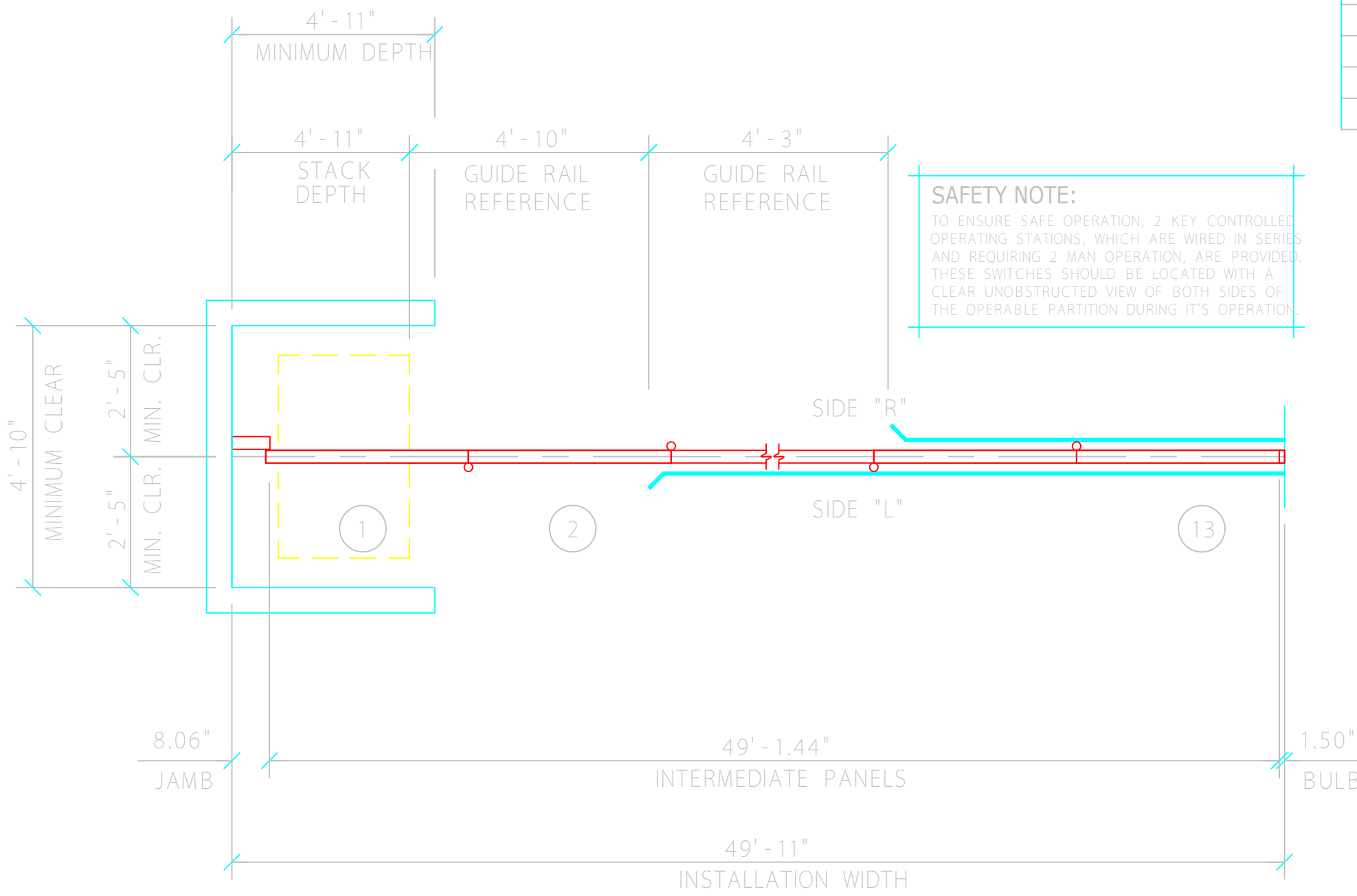
CAD REF NO.

ORDER NO.

SHEET NO. 2 OF: 4

ARCHITECT / GENERAL CONTRACTOR NOTES

1. MINIMUM DIMENSIONS PROVIDE FOR CLEARANCE FROM ALL ADJACENT CONSTRUCTION/FIXTURES FOR ADJUSTMENT, OPERATION, AND SAFETY.
2. GENERAL CONTRACTOR SHALL BE RESPONSIBLE FOR ALL STRUCTURAL SUPPORT, ADJOINING CONSTRUCTION AND TRIM.
3. WALL CONSTRUCTION AT JAMBS MUST BE ADEQUATE FOR SECURING JAMBS
4. AFS INDICATES ADJUSTABLE FIXED SEALS.
 - T INDICATES OPERABLE PANEL ACCESS HOLE.
 - ▼ INDICATES BOTTOM SEAL OPERATOR HANDLE.
5. HINGE POINTS ARE SHOWN FOR DIAGRAMMATIC PURPOSES ONLY.



SAFETY NOTE:
 TO ENSURE SAFE OPERATION, 2 KEY CONTROLLED OPERATING STATIONS, WHICH ARE WIRED IN SERIES AND REQUIRING 2 MAN OPERATION, ARE PROVIDED. THESE SWITCHES SHOULD BE LOCATED WITH A CLEAR UNOBSTRUCTED VIEW OF BOTH SIDES OF THE OPERABLE PARTITION DURING IT'S OPERATION.

PANEL PLAN

PANEL SCHEDULE				
PANEL	WIDTH	SIDE R	SIDE L	PASSDOOR
1	3' - 2.12"			
2	3' - 2.12"			
3	3' - 2.12"			
4	3' - 7.06"			
5	4' - 0"			PD1
6	4' - 0"			
7	4' - 0"			
8	4' - 0"			
9	4' - 0"			
10	4' - 0"			
11	4' - 0"			PD2
12	4' - 0"			
13	4' - 0"			

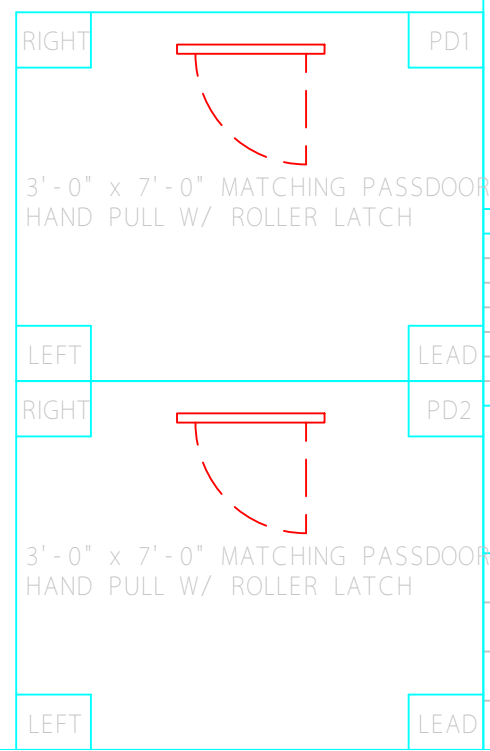


ACOUSTI-SEAL 933E

CLOSURE METHOD	SIDE JAMB (ELECTRIC WALL)
FABRICATION HEIGHT	15' - 11"
TRACK SYSTEM	#14
BOTTOM SEALS	2" (51MM) AUTOMATIC
PANEL ACOUSTICAL RATING	50 STC
HANGING WEIGHT	8 (lbs./sq.ft.)
PANEL SKIN/FACING	STEEL
HINGE COLOR	TO BE ADVISED
TRIM COLOR	TO BE ADVISED
PANEL FINISH SELECTION	VINYL TO BE ADVISED

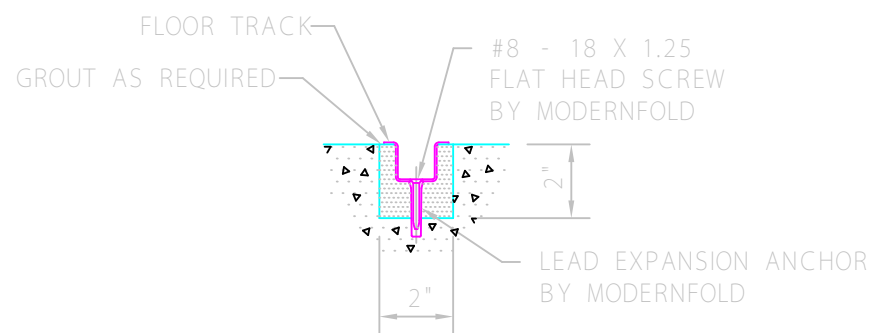
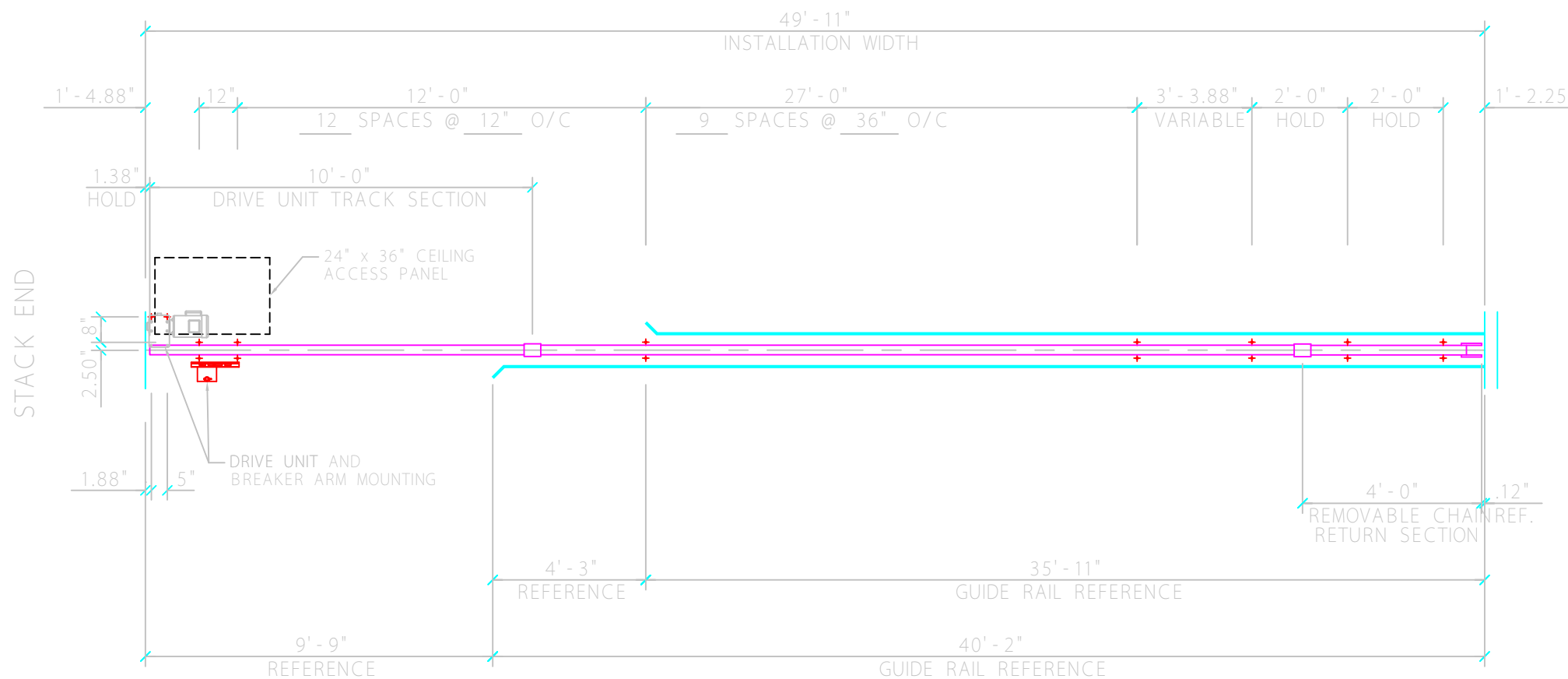
JOB NAME: GIBBS SCHOOL	GYMNASIUM
LOCATION: ARLINGTON, MA	ARCHITECT: BARRETT ARCHITECTS
ARCHITECT: BARRETT ARCHITECTS	ARCHITECT: BARRETT ARCHITECTS
CONTRACTOR: PAPPAS CO	CONTRACTOR: PAPPAS CO
DISTRIBUTOR: THE PAPPAS CO., INC.	DISTRIBUTOR: THE PAPPAS CO., INC.

DATE	REV	ISSUED FOR	DRN
04/30/15	0	APPROVAL	MPM
	1		
	2		
	3		
	4		
	5		
	6		



PANEL LAYOUT OP-01

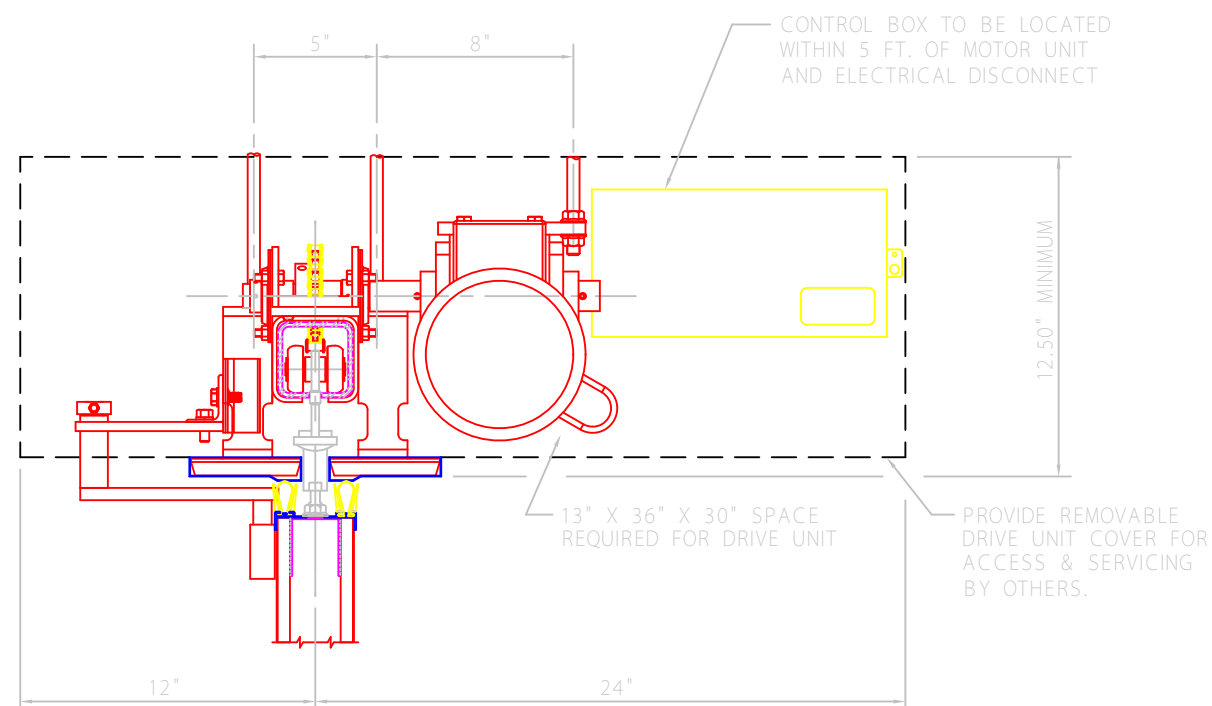
DRAWING NO. 052014111854 - 01
CAD REF NO.
ORDER NO.
SHEET NO. 1 OF 4



FLOOR GUIDE TRACK

NOTES:

1. PUNCH OR DRILL .56" DIA. HOLES, 2.50" EACH SIDE OF CENTERLINE, 5.00" GAGE, AT ALL LOCATIONS. AS NOTED.
2. DRIVE UNIT TO BE 1 HP, 208-230 VOLT, 60 CYCLE, 3 PHASE, 5 FULL LOAD AMPS, WITH TWO (2) KEY CONTROLLED OPERATING STATIONS.
3. CONTROL STATION #112220
4. 9" HANGER RODS
5. DISCONNECT BOX AND POWER TO DISCONNECT BOX BY OTHERS.



ACOUSTI-SEAL 933E

CLOSURE METHOD	SIDE JAMB (ELECTRIC WALL)
FABRICATION HEIGHT	15' - 11"
TRACK SYSTEM	#14
BOTTOM SEALS	2" (51MM) AUTOMATIC
PANEL ACOUSTICAL RATING	50 STC
HANGING WEIGHT	8 (lbs./sq.ft.)
PANEL SKIN/FACING	STEEL
HINGE COLOR	TO BE ADVISED
TRIM COLOR	TO BE ADVISED
PANEL FINISH SELECTION	VINYL TO BE ADVISED

JOB NAME: GIBBS SCHOOL

GYMNASIUM

LOCATION: ARLINGTON, MA

ARCHITECT: BARRETT ARCHITECTS

ARCHITECT:

CONTRACTOR: PAPPAS CO

DISTRIBUTOR: THE PAPPAS CO., INC.

DATE	REV	ISSUED FOR	DRN
04/30/15	0	APPROVAL	MPM
	1		
	2		
	3		
	4		
	5		
	6		

**TRACK LAYOUT
OP-01**

DRAWING NO: 052014111854 - 01

CAD REF NO.

ORDER NO.

SHEET NO. 4 OF 4