

ADDENDUM 01

BID #15-17

Date: May 28, 2015

FROM the Project Manager: Elements Management, LLC
30 Briarcliff Drive
Hopkinton, MA 01748
rfraser@elements-mgmt.com

REQUESTED By: Company: BIDDERS AT WALK THROUGH

References:

Drawing: BRICKWORK SCHEDULE Number: A 2.1 Date: 5/22/15
Drawing: BRICKWORK SCHEDULE Number: A 2.2 Date: 5/22/15
Drawing: BRICKWORK SCHEDULE Number: A 2.3 Date: 5/22/15

INSTRUCTIONS:

INCLUDE THE QUANTITIES OF BRICK REPLACEMENT AND CUTTING AND POINTING THAT ARE ILLUSTRATED ON DRAWINGS A 2.1, A 2.2 AND A 2.3 AS PART OF THE BASE BID.

THE DRAWINGS ARE BEING SENT AS PDF ATTACHMENT AS PART OF THIS ADDENDUM 01.

Refer to Attachment(s)

THE DRAWINGS ARE BEING SENT AS PDF ATTACHMENTS TO THIS ADDENDUM 01.

Response From:

Richard Fraser,
Elements Management

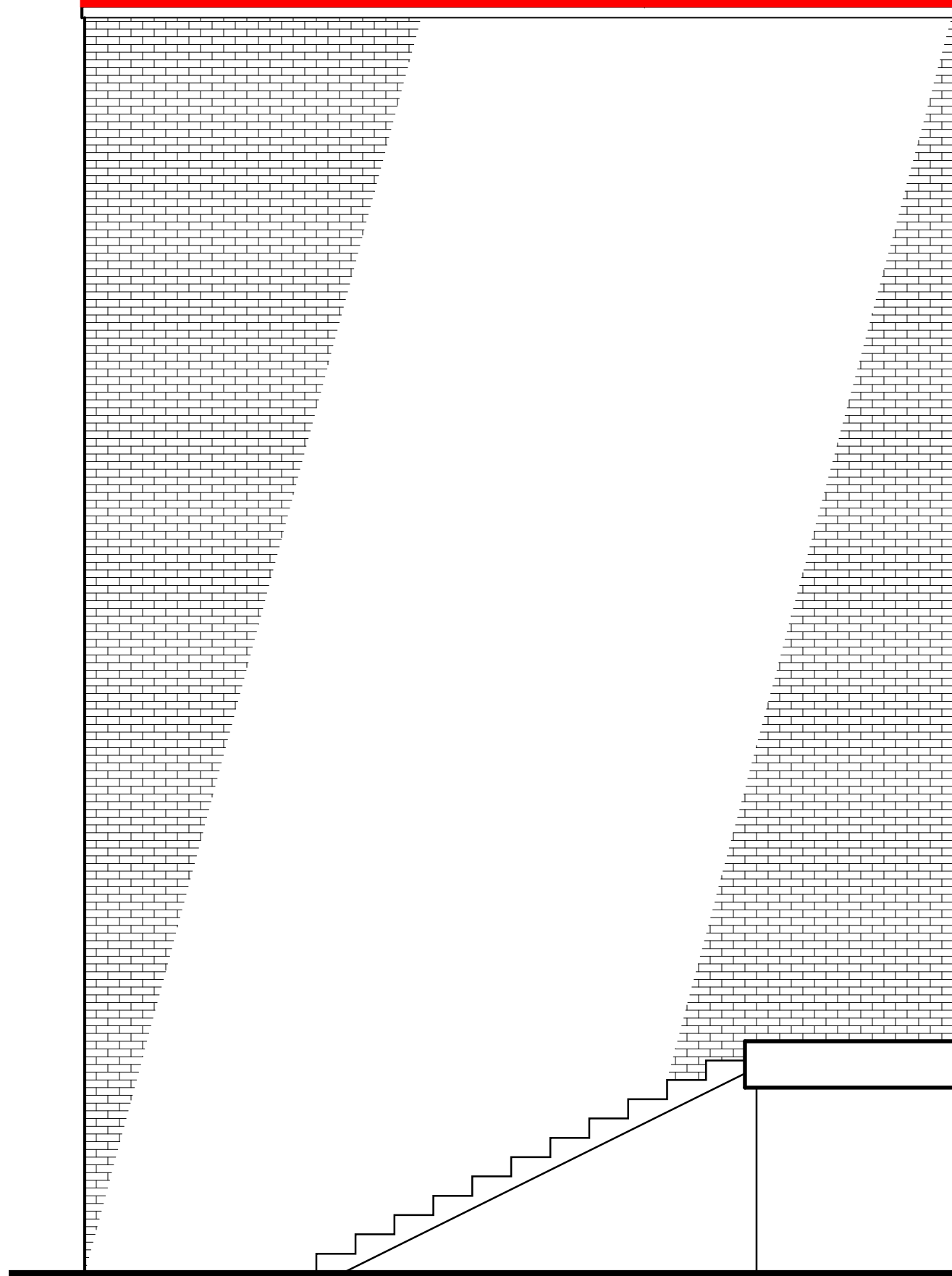
Signed by:



End of Document

Elements Management, LLC ADDENDUM 01

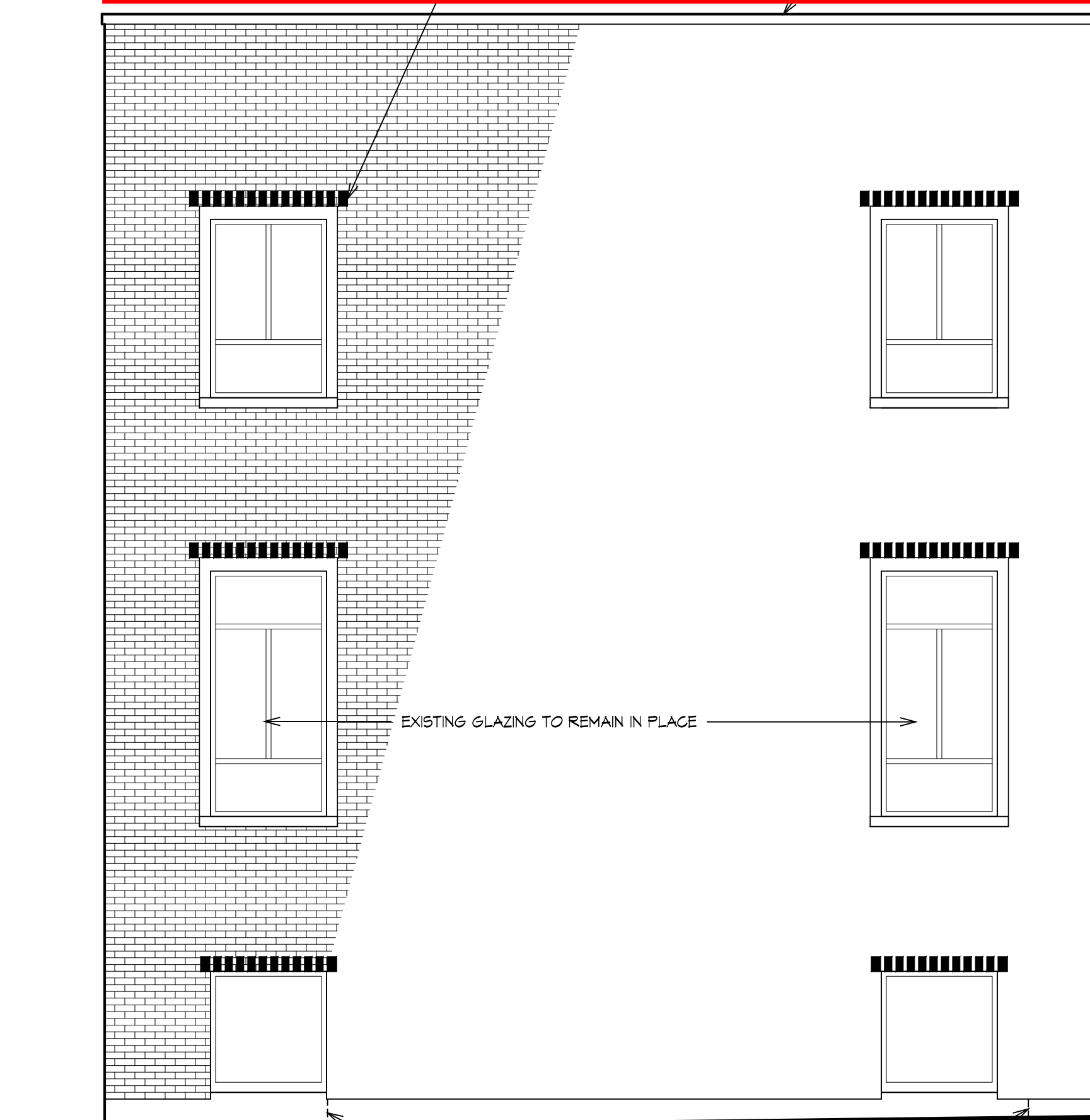
**ELEVATION
BRICK WORK SCHEDULE
CUT & POINT - 0%
BRICKS REPLACED - 0**



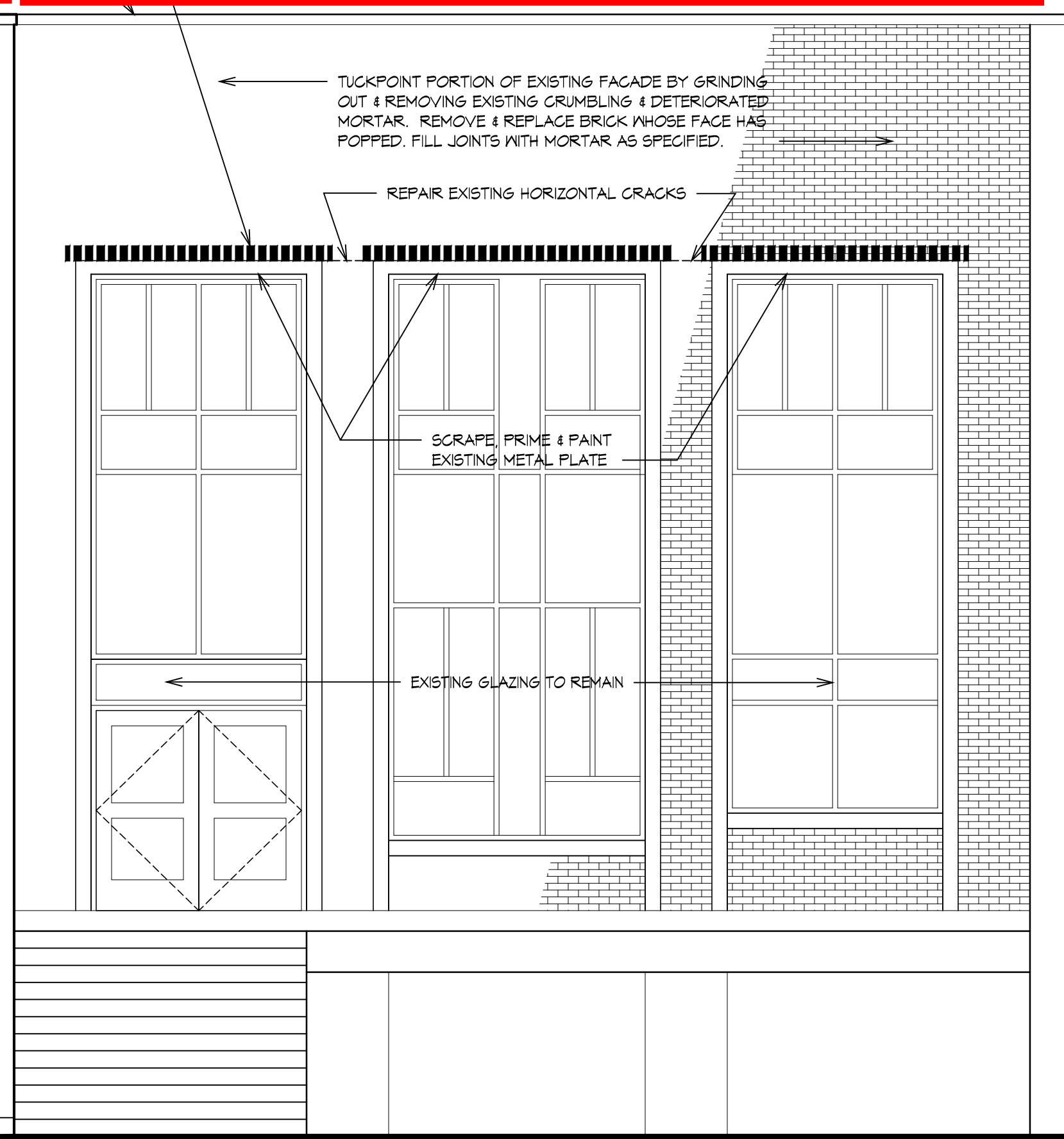
1 EXTERIOR ELEVATION
1/4" = 1'-0"

- ELEVATION NOTES:**
- EXISTING HANDRAILS NOT SHOWN FOR CLARITY & ARE THEREFORE NOT IN CONTRACT.
 - FOR CLEANING & WATERPROOFING, SEE SPECIFICATIONS

**ELEVATION
BRICK WORK SCHEDULE
CUT & POINT - 5%
BRICKS REPLACED - 0**

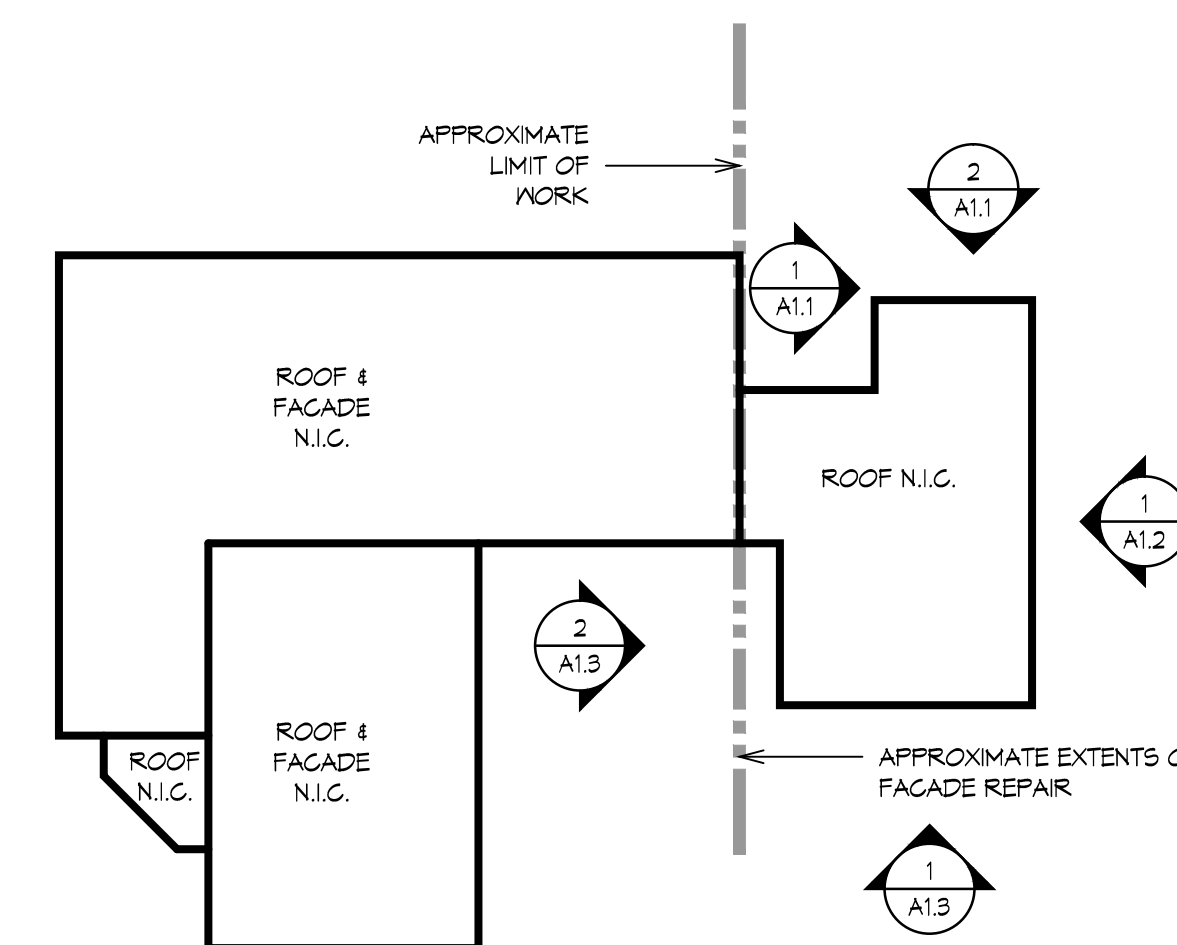


**ELEVATION
BRICK WORK SCHEDULE
CUT & POINT - 5%
BRICKS REPLACED - 5**



2 EXTERIOR ELEVATION
1/4" = 1'-0"

- ELEVATION NOTES:**
- EXISTING HANDRAILS NOT SHOWN FOR CLARITY & ARE THEREFORE NOT IN CONTRACT.
 - AT EXISTING PRECAST CONCRETE SILLS, G.C. TO TUCKPOINT PERIMETER & REPAIR EXISTING CRACKS.
 - EXISTING SEALANT AT PERIMETER OF WINDOWS TO REMAIN. PREPARE EXISTING SURFACE FOR INSTALLATION OF SIKKOAT SEALANT
 - FOR CLEANING & WATERPROOFING, SEE SPECIFICATIONS



A KEY PLAN
NOT TO SCALE

Elements Management
ELEMENTS MANAGEMENT
30 BRIARCLIFF DRIVE
HOPKINTON, MA 01748

NO.	REVISIONS	DATE

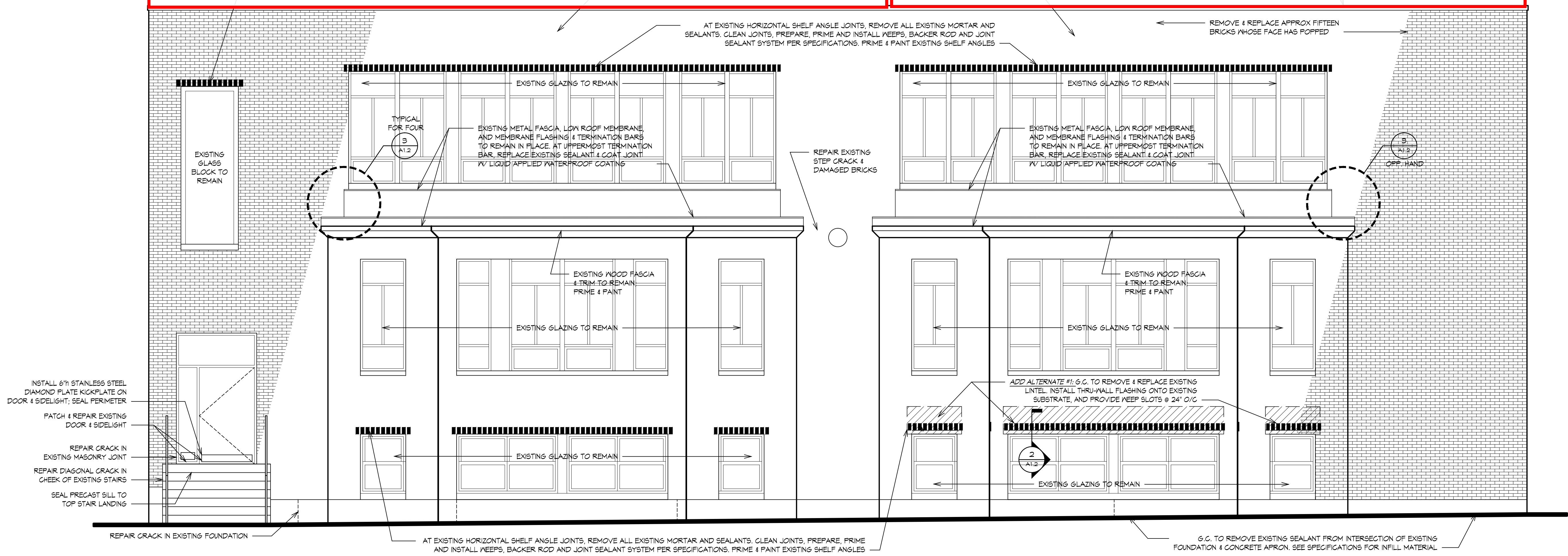
BRICK WORK SCHEDULE
FACADE REPAIRS AT
HARDY ELEMENTARY SCHOOL
LAKE STREET, ARLINGTON, MA

DATE 5/22/15
SCALE AS NOTED
PROJ. NO. ---
SHEET

A 2.1

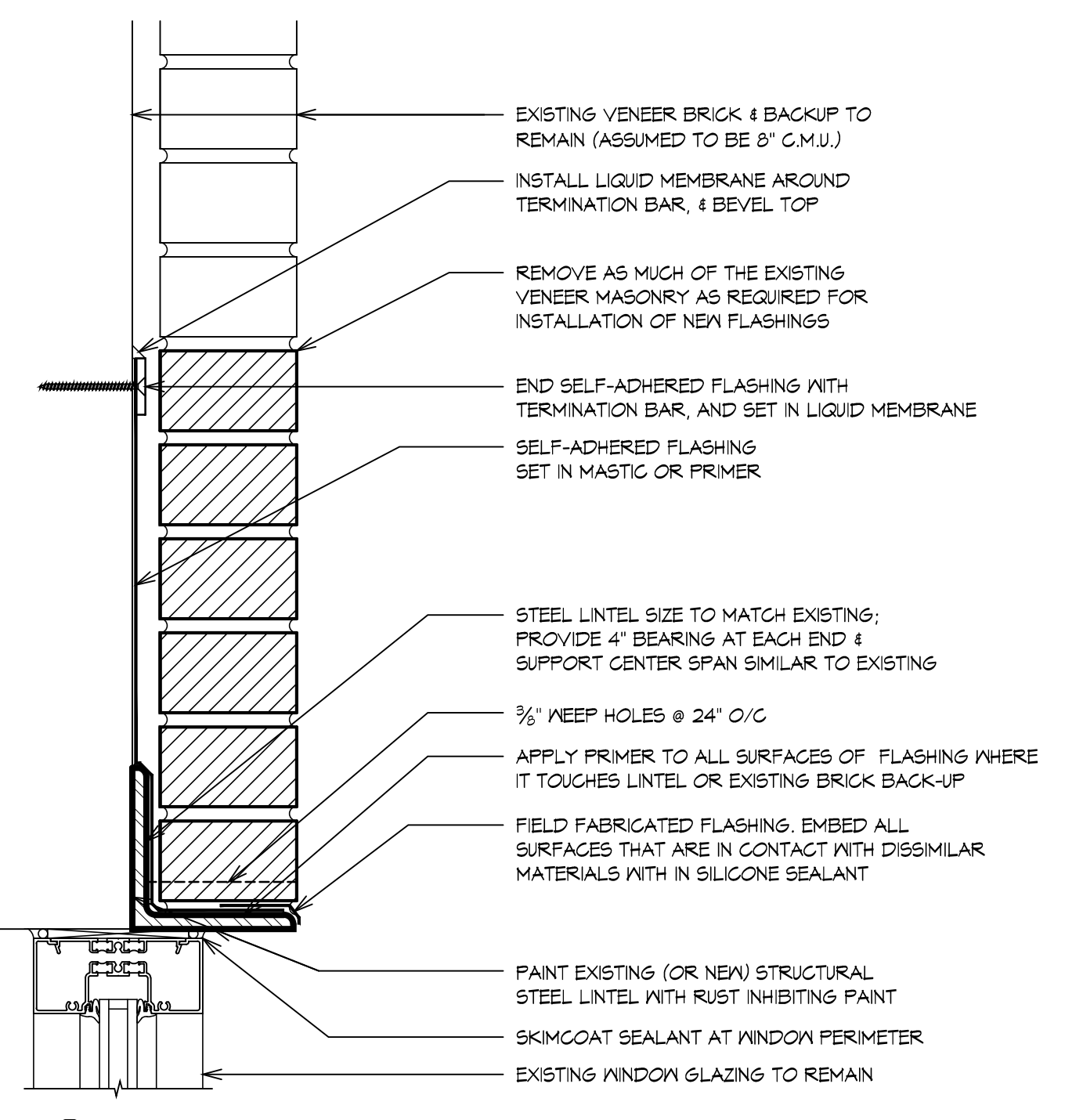
**ELEVATION
BRICK WORK SCHEDULE
CUT & POINT - 5%
BRICKS REPLACED - 25**

**ELEVATION
BRICK WORK SCHEDULE
CUT & POINT - 30%
BRICKS REPLACED - 25**

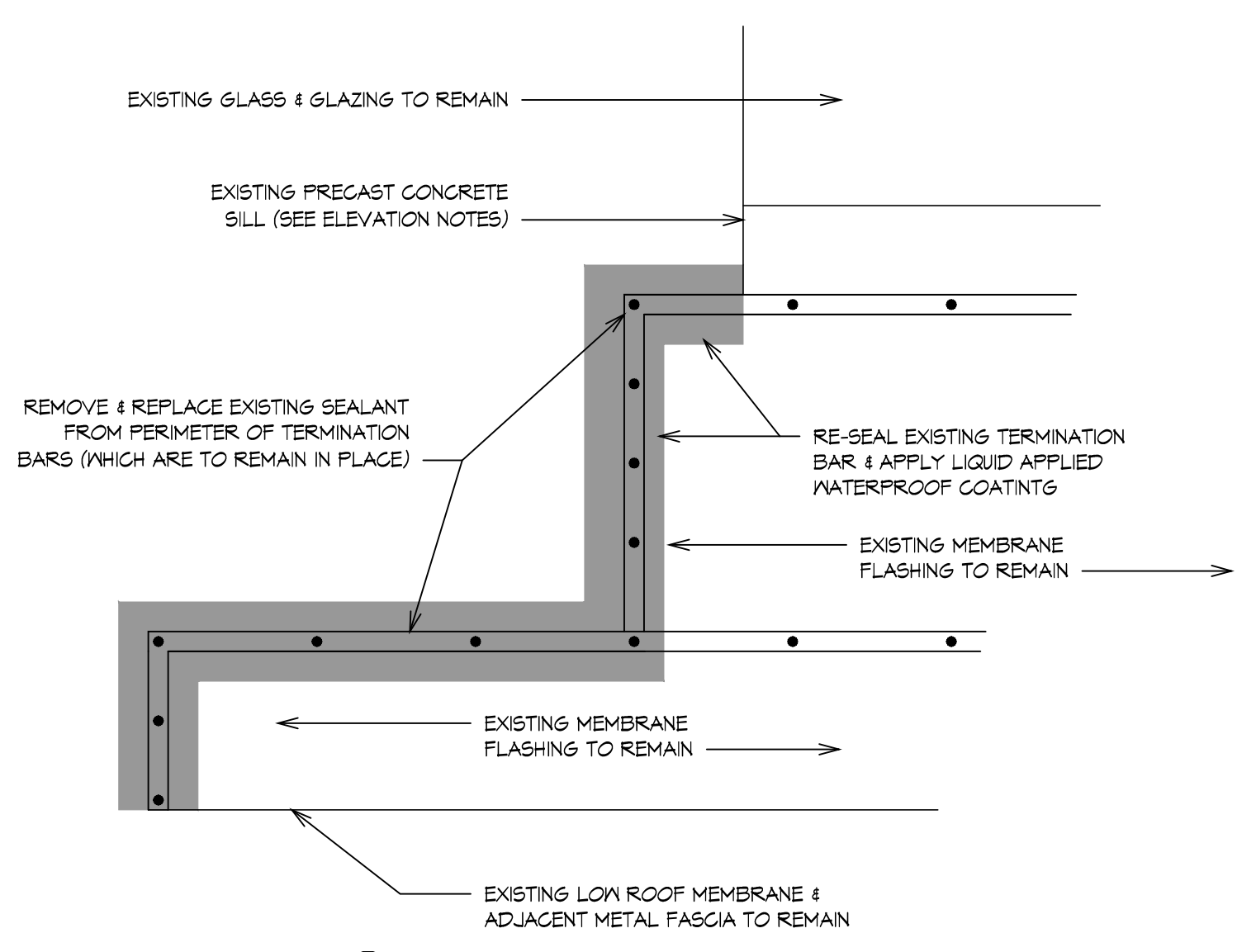


1 EXTERIOR ELEVATION
1/4" = 1'-0"

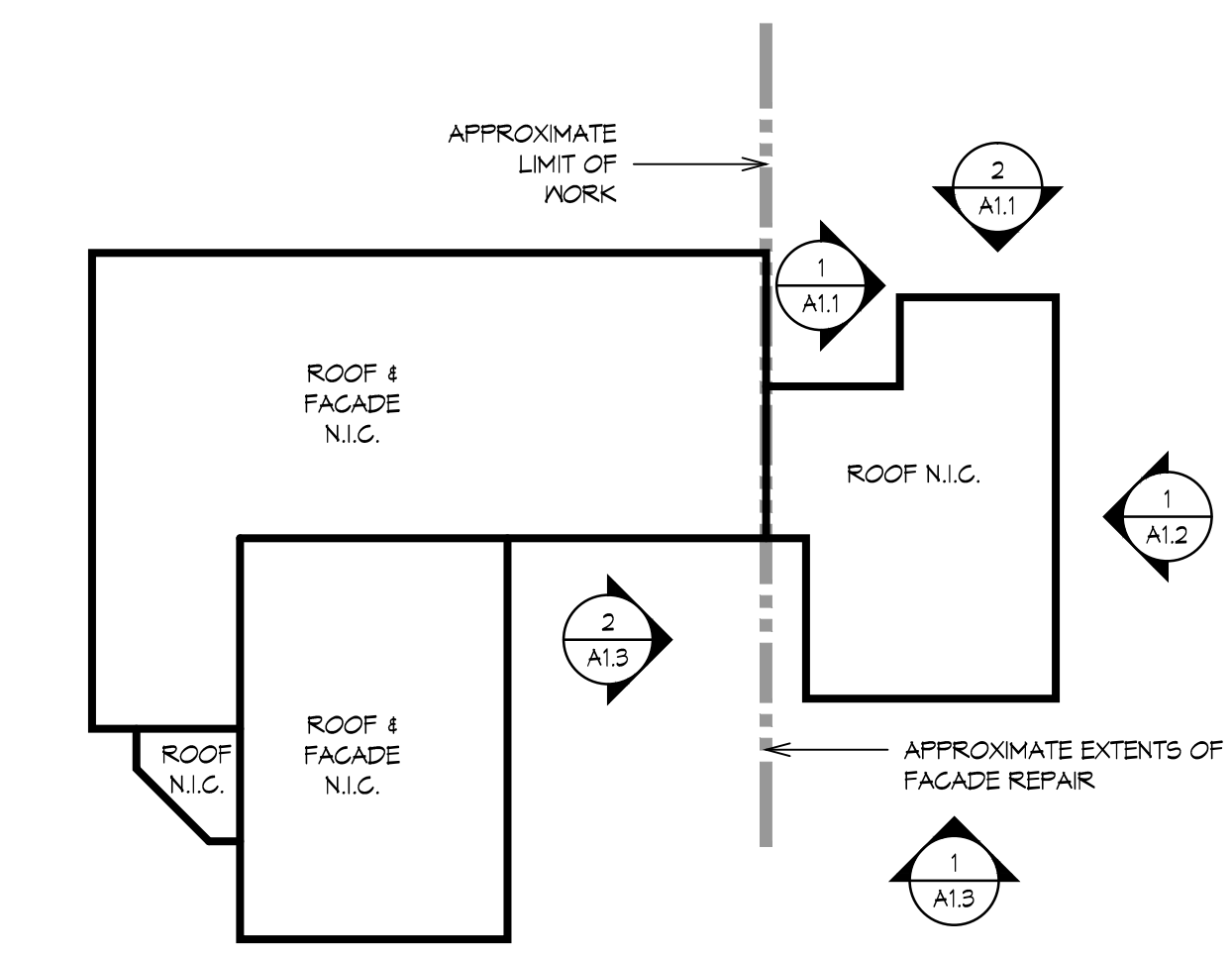
- ELEVATION NOTES:**
- AT EXISTING PRECAST CONCRETE SILLS, G.C. TO TUCKPOINT PERIMETER & REPAIR EXISTING CRACKS.
 - EXISTING SEALANT AT PERIMETER OF WINDOWS TO REMAIN. PREPARE EXISTING SURFACE FOR INSTALLATION OF SKIMCOAT SEALANT.
 - FOR CLEANING & WATERPROOFING, SEE SPECIFICATIONS.



2 LINTEL REPLACEMENT DETAIL
3" = 1'-0" ADD ALTERNATE #1



3 TERMINATION BAR REPAIR DETAIL
1 1/2" = 1'-0"



A KEY PLAN
NOT TO SCALE

The architectural plans, drawings, design, specifications and other arrangements on this sheet are and shall remain the property of Elements Management. No part thereof shall be copied, distributed to others, or used in connection with any work or project, other than the specified project for which they have been prepared and developed, without the express knowledge and written consent of Elements Management. Copyright © 2015 by Elements Management.

Elements Management
ELEMENTS MANAGEMENT
30 BRIARCLIFF DRIVE
HOPKINTON, MA 01748

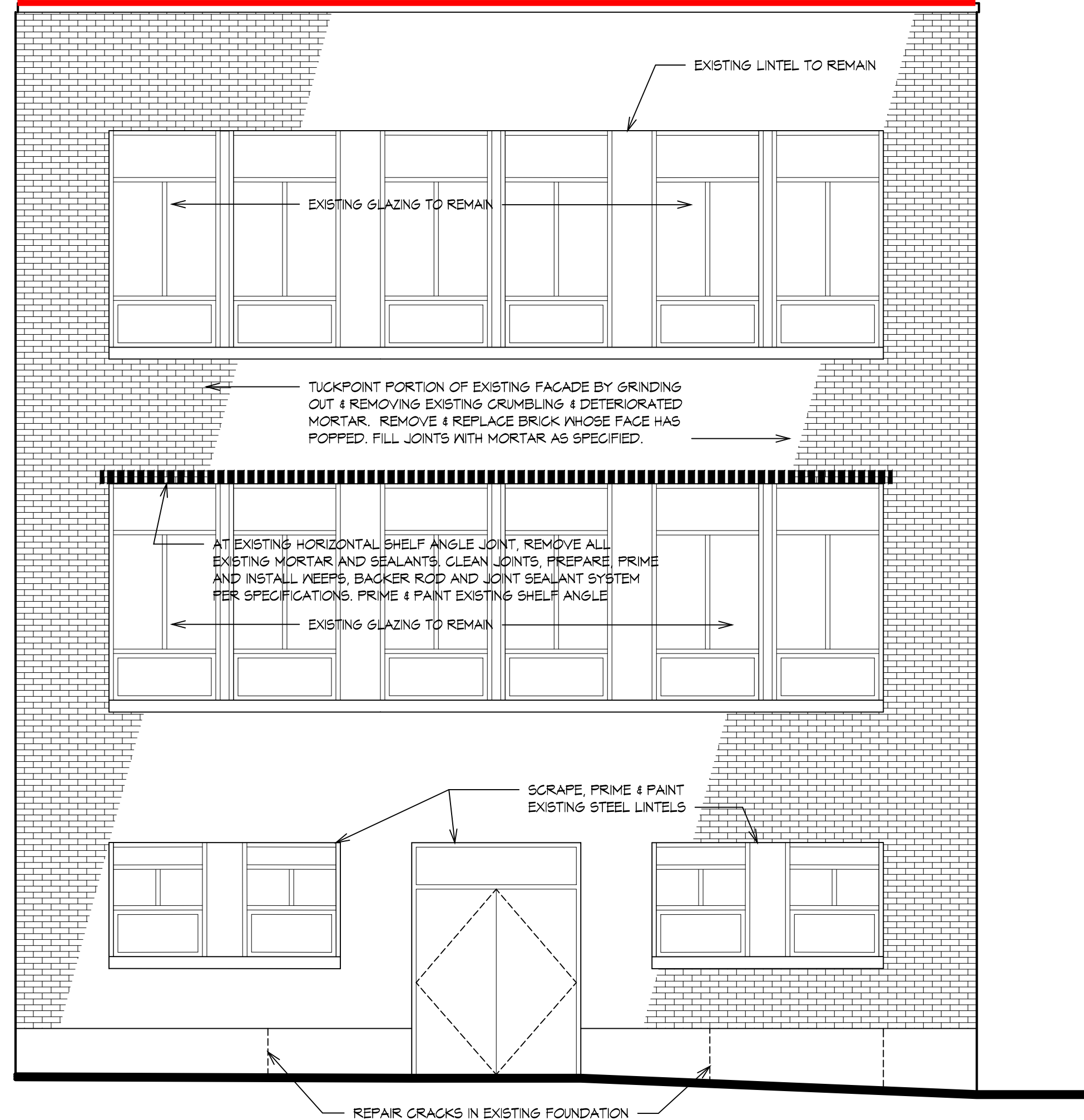
NO.	REVISIONS	DATE

BRICK WORK SCHEDULE
FACADE REPAIRS AT
HARDY ELEMENTARY SCHOOL
LAKE STREET, ARLINGTON, MA

DATE 5/22/15
SCALE AS NOTED
PROJ. NO. ---
SHEET

A 2.2

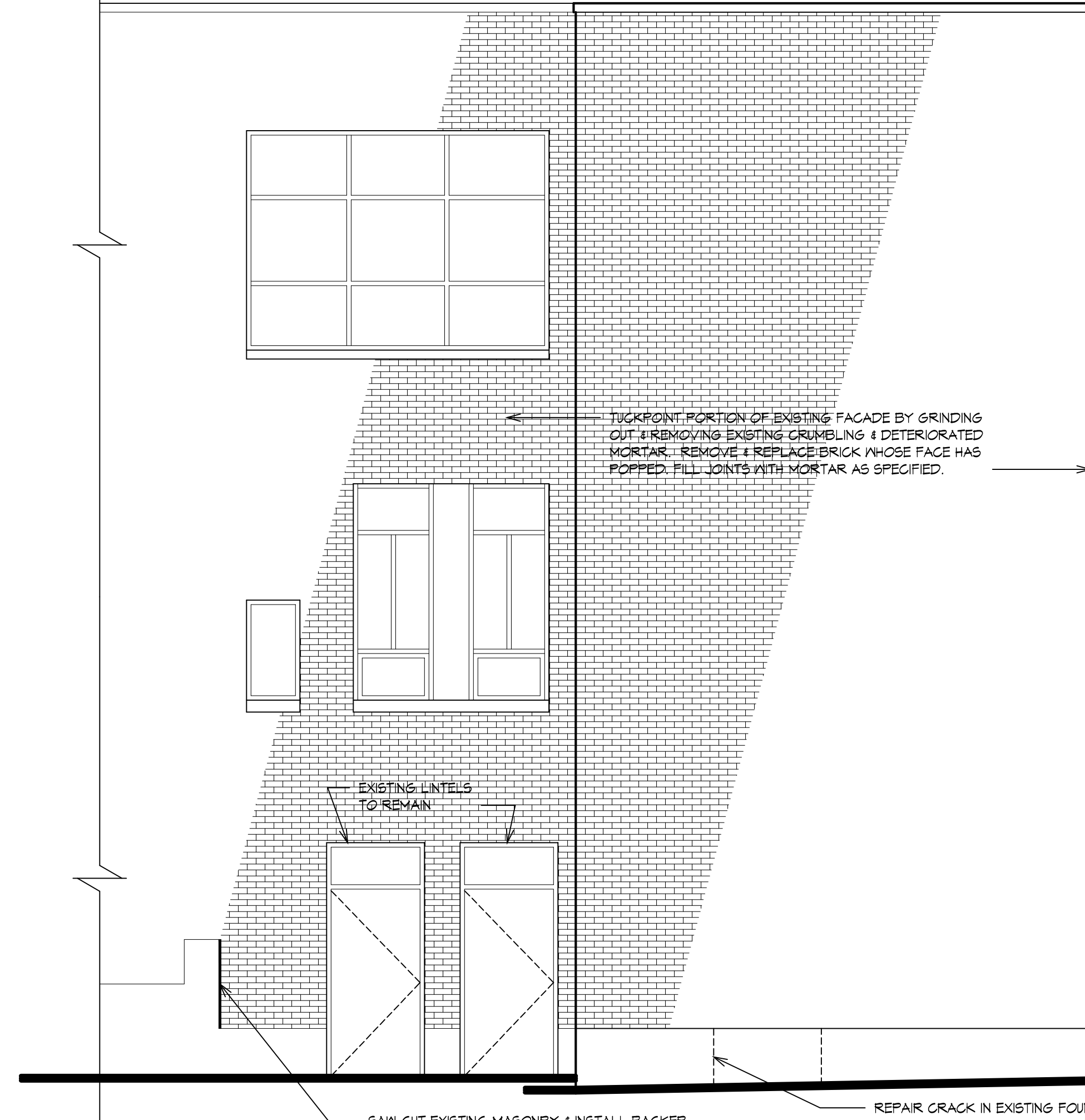
**ELEVATION
BRICK WORK SCHEDULE
CUT & POINT - 30%
BRICKS REPLACED - 2**



1 EXTERIOR ELEVATION
1/4" = 1'-0"

- ELEVATION NOTES:**
1. AT EXISTING PRECAST CONCRETE SILLS, G.G. TO TUCKPOINT PERIMETER & REPAIR EXISTING CRACKS.
 2. EXISTING SEALANT AT PERIMETER OF WINDOWS TO REMAIN. PREPARE EXISTING SURFACE FOR INSTALLATION OF SKIMCOAT SEALANT
 4. FOR CLEANING & WATERPROOFING, SEE SPECIFICATIONS

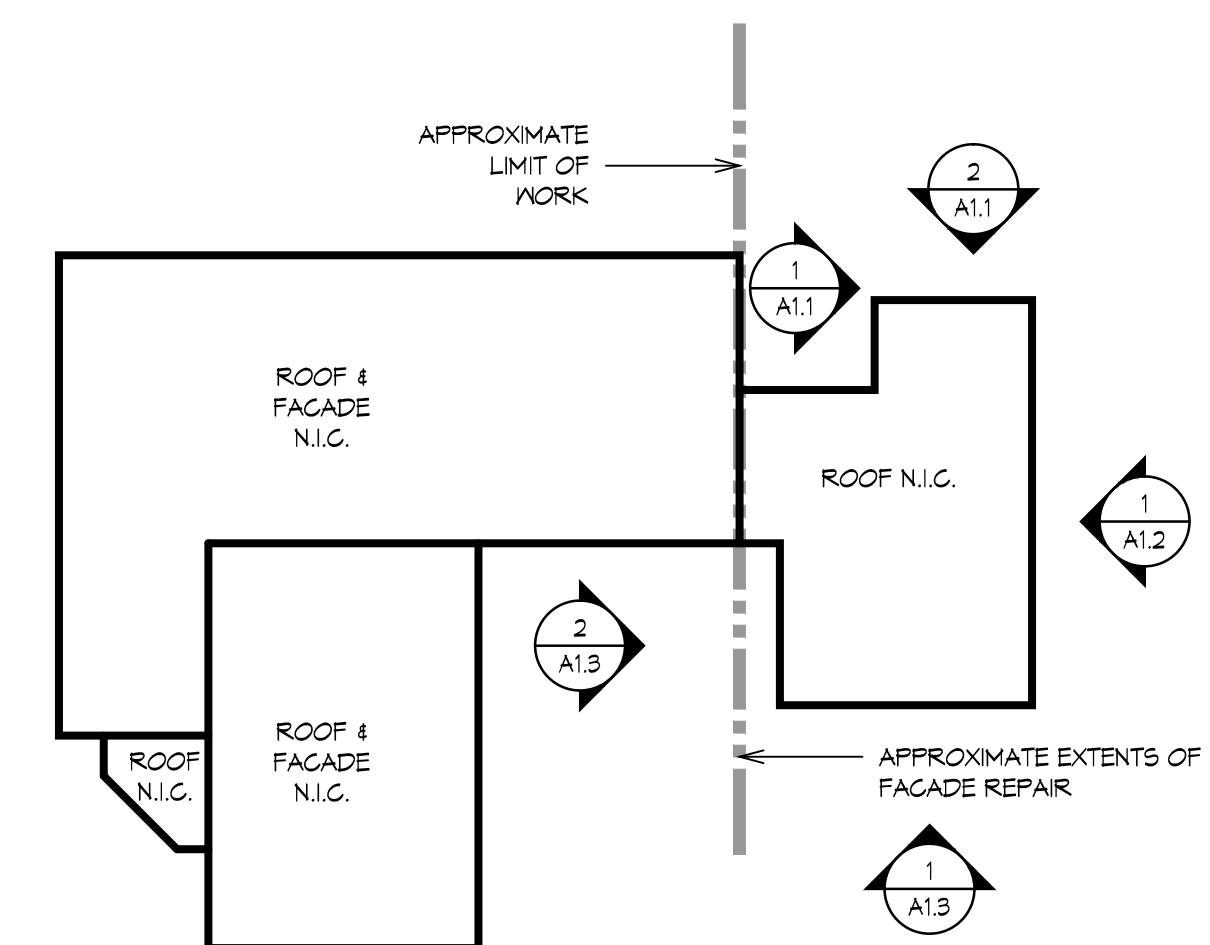
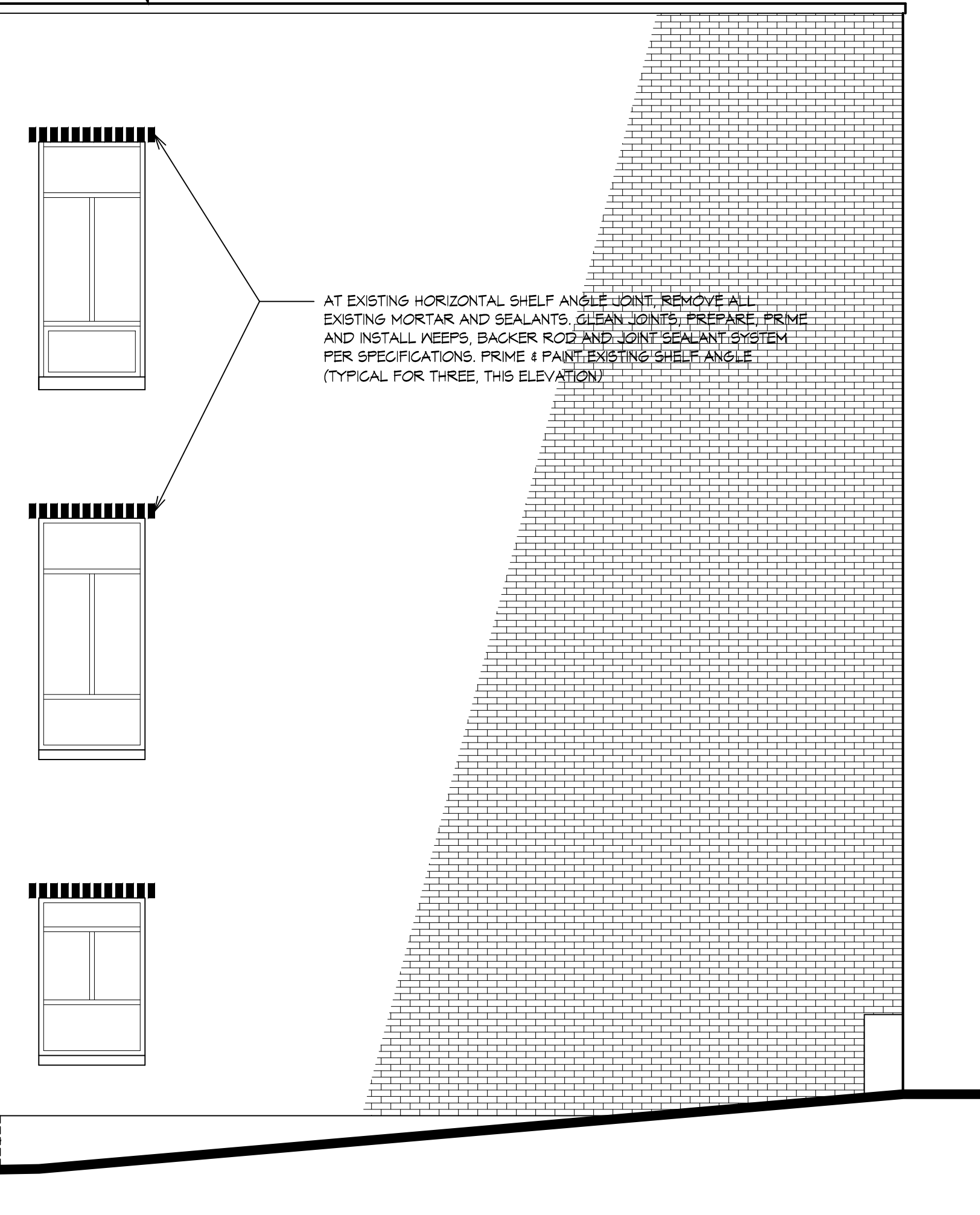
**ELEVATION
BRICK WORK SCHEDULE
CUT & POINT - 10%
BRICKS REPLACED - 5**



2 EXTERIOR ELEVATION
1/4" = 1'-0"

- ELEVATION NOTES:**
1. AT EXISTING PRECAST CONCRETE SILLS, G.G. TO TUCKPOINT PERIMETER & REPAIR EXISTING CRACKS.
 2. EXISTING SEALANT AT PERIMETER OF WINDOWS TO REMAIN. PREPARE EXISTING SURFACE FOR INSTALLATION OF SKIMCOAT SEALANT
 4. FOR CLEANING & WATERPROOFING, SEE SPECIFICATIONS

**ELEVATION
BRICK WORK SCHEDULE
CUT & POINT - 5%
BRICKS REPLACED - 15**



A KEY PLAN
NOT TO SCALE

Elements Management
ELEMENTS MANAGEMENT
30 BRIARCLIFF DRIVE
HOPKINTON, MA 01748

NO.	REVISIONS	DATE

BRICK WORK SCHEDULE
FACADE REPAIRS AT
HARDY ELEMENTARY SCHOOL
LAKE STREET, ARLINGTON, MA

DATE 5/22/15
SCALE AS NOTED
PROJ. NO. ---
SHEET

A 2.3