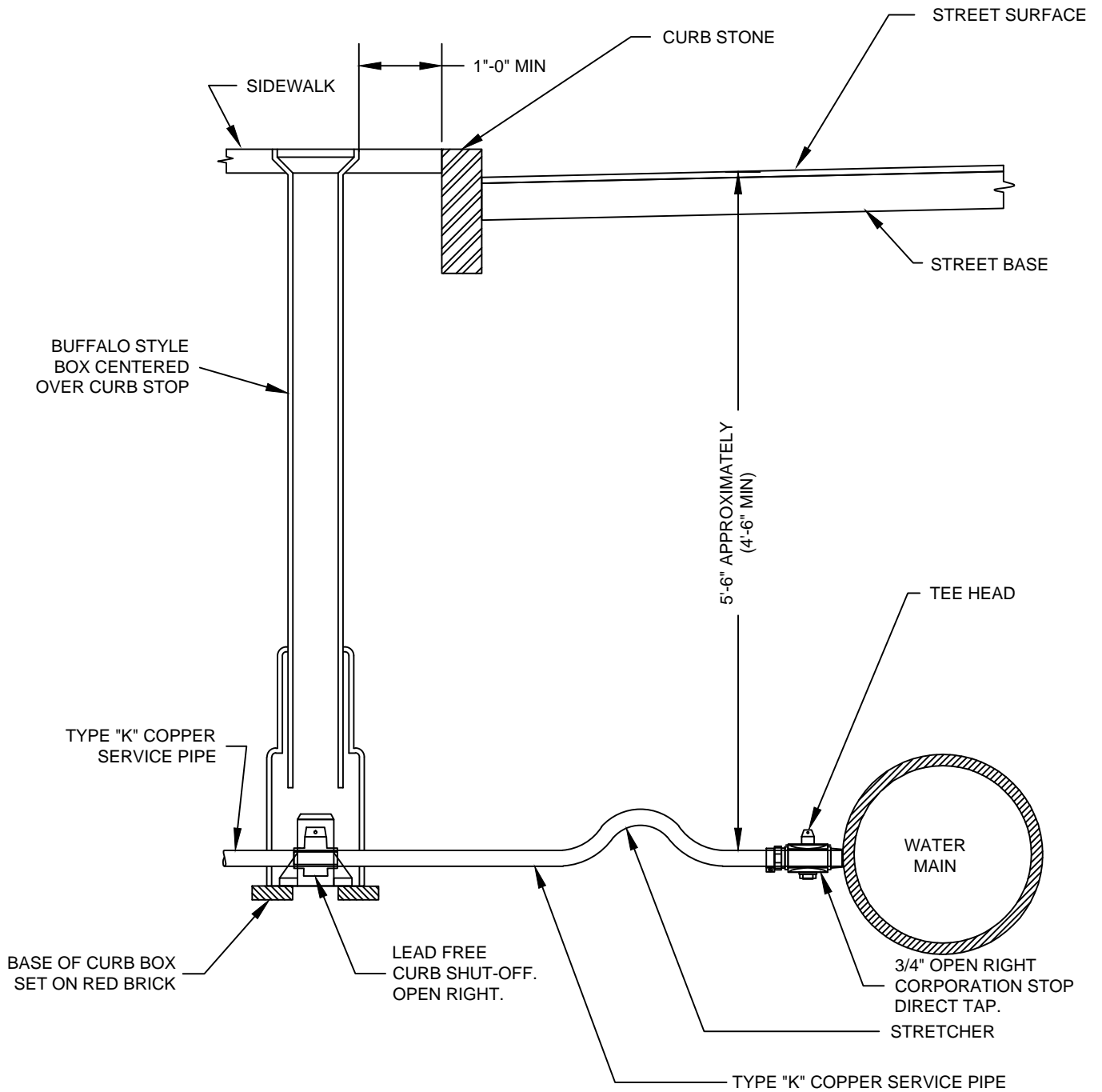




WATER CONSTRUCTION STANDARD DETAILS

W-0001	Typical Water Connection for 3/4" Service
W-0002	Typical Water Connection for 1-1/2" to 2" Service
W-0003	Typical Tapping Sleeve Connection
W-0004	Typical Gate Valve Installation on Existing Main
W-0005	Typical Thrust Block Detail
W-0006	Typical Water Main Trench Detail
W-0007	Typical Anchor Tee Installation
W-0008	Typical Fire Hydrant Installation
W-0009	Typical Cut & Remove Existing Connection over 2"
W-0010	Typical Thrust Restraints Wedge Action Type Joints
W-0011	Water Main Utility Crossing Detail
W-0012	Water Main Bypass - Temporary Pipe Protection
W-0013	Water Main Bypass - Temporary Pedestrian Ramp



NOTE:

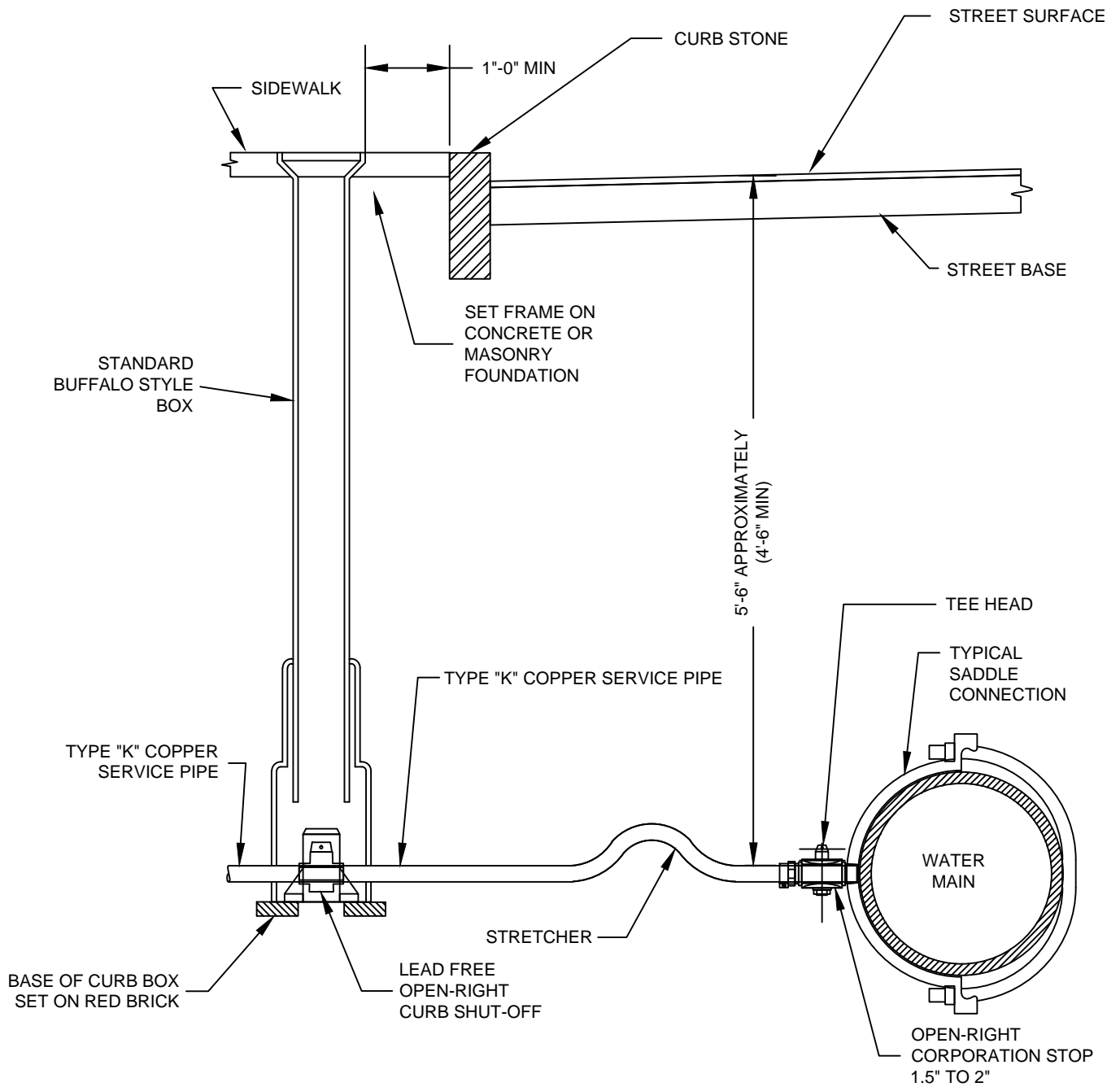
1. ALL INSTALLATIONS SHALL CONFORM TO TOWN OF ARLINGTON STANDARD WATER REGULATIONS & SPECIFICATIONS.



TYPICAL WATER CONNECTION
FOR 3/4" SERVICE

OCT. 2014
NOT TO SCALE
REVISION
①

W-0001



NOTE:

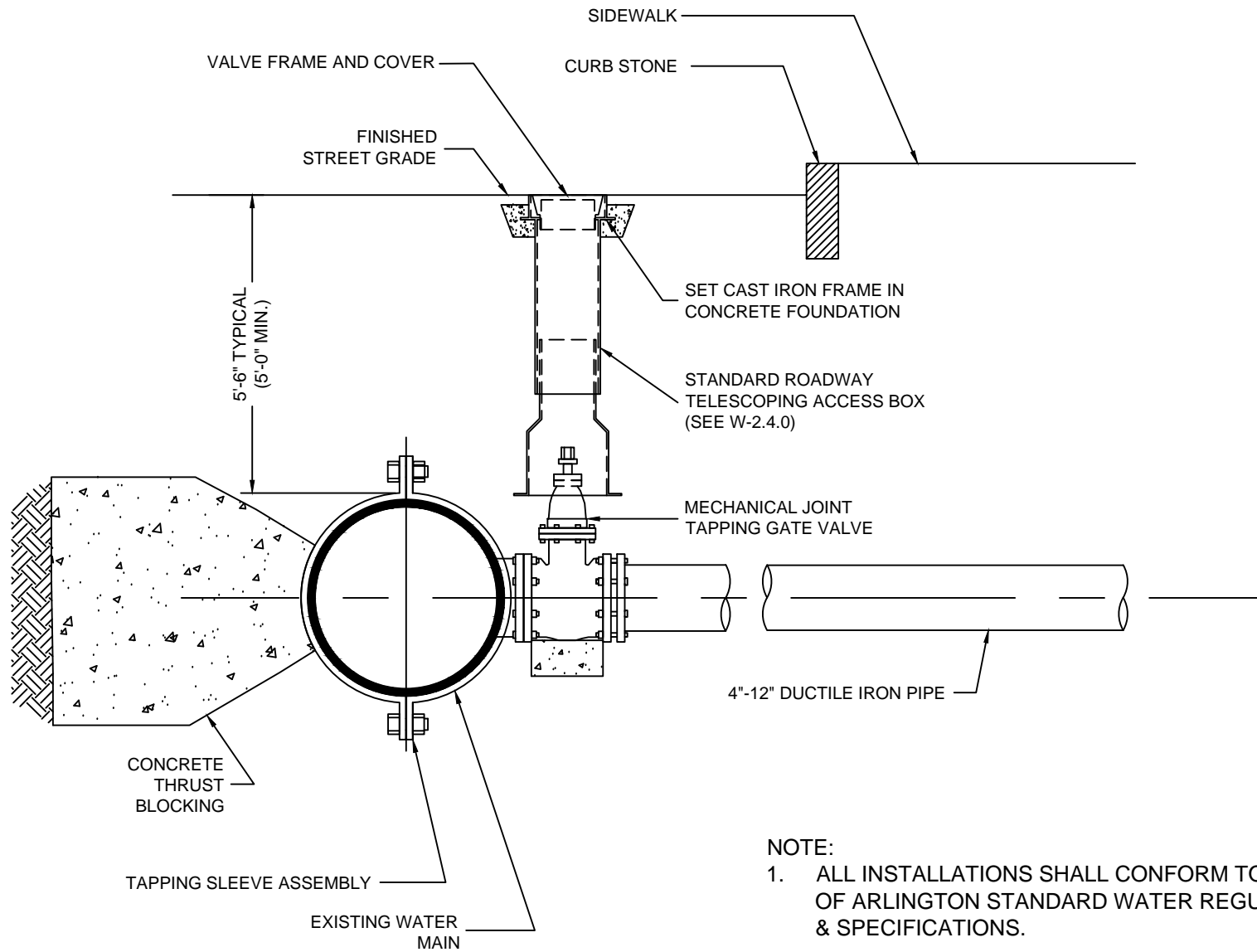
1. ALL INSTALLATIONS SHALL CONFORM TO TOWN OF ARLINGTON STANDARD WATER REGULATIONS & SPECIFICATIONS.



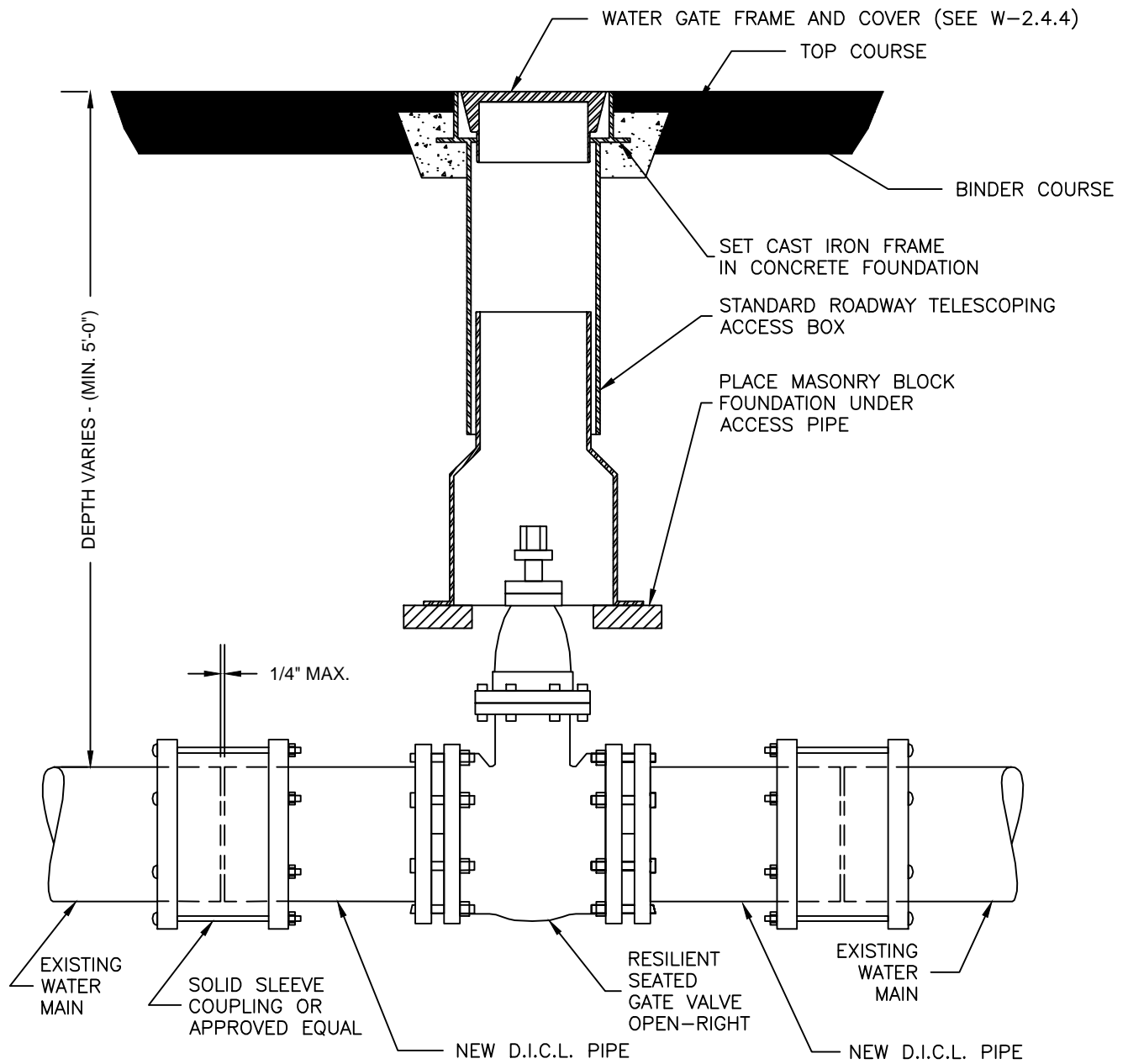
**TYPICAL WATER CONNECTION
FOR 1-1/2" to 2" SERVICE**

OCT. 2014
NOT TO SCALE
REVISION
①

W-0002

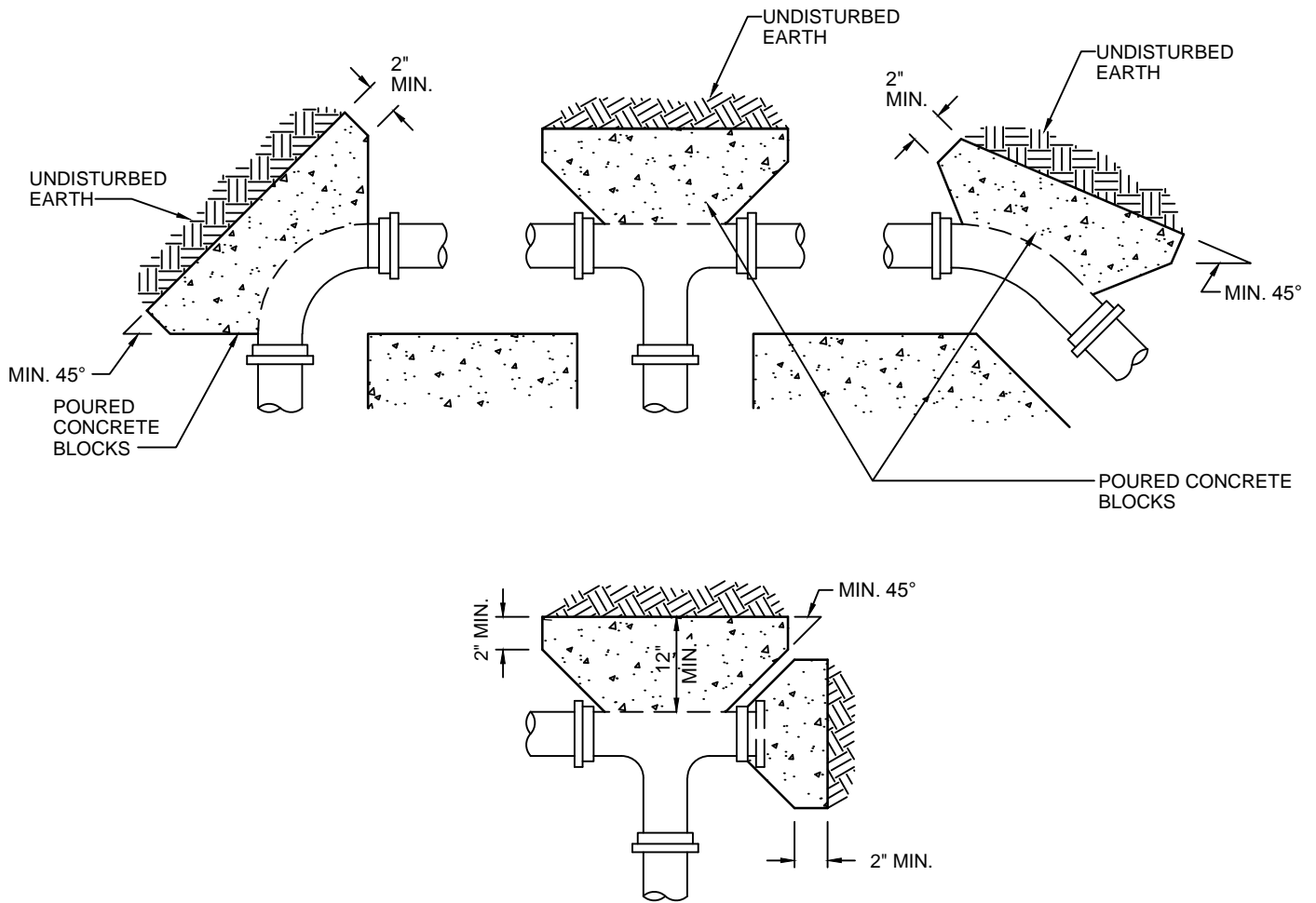


NOTE:
 1. ALL INSTALLATIONS SHALL CONFORM TO TOWN OF ARLINGTON STANDARD WATER REGULATIONS & SPECIFICATIONS.

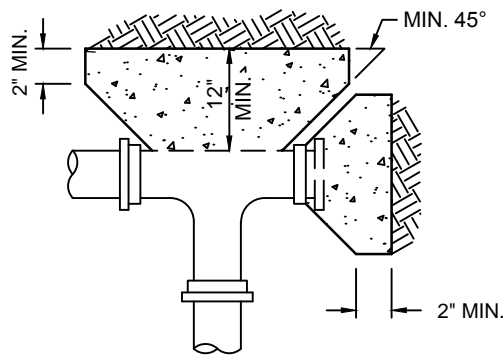


NOTE:

1. ALL INSTALLATIONS SHALL CONFORM TO TOWN OF ARLINGTON STANDARD WATER REGULATIONS & SPECIFICATIONS.



PLAN VIEWS



NOTE:

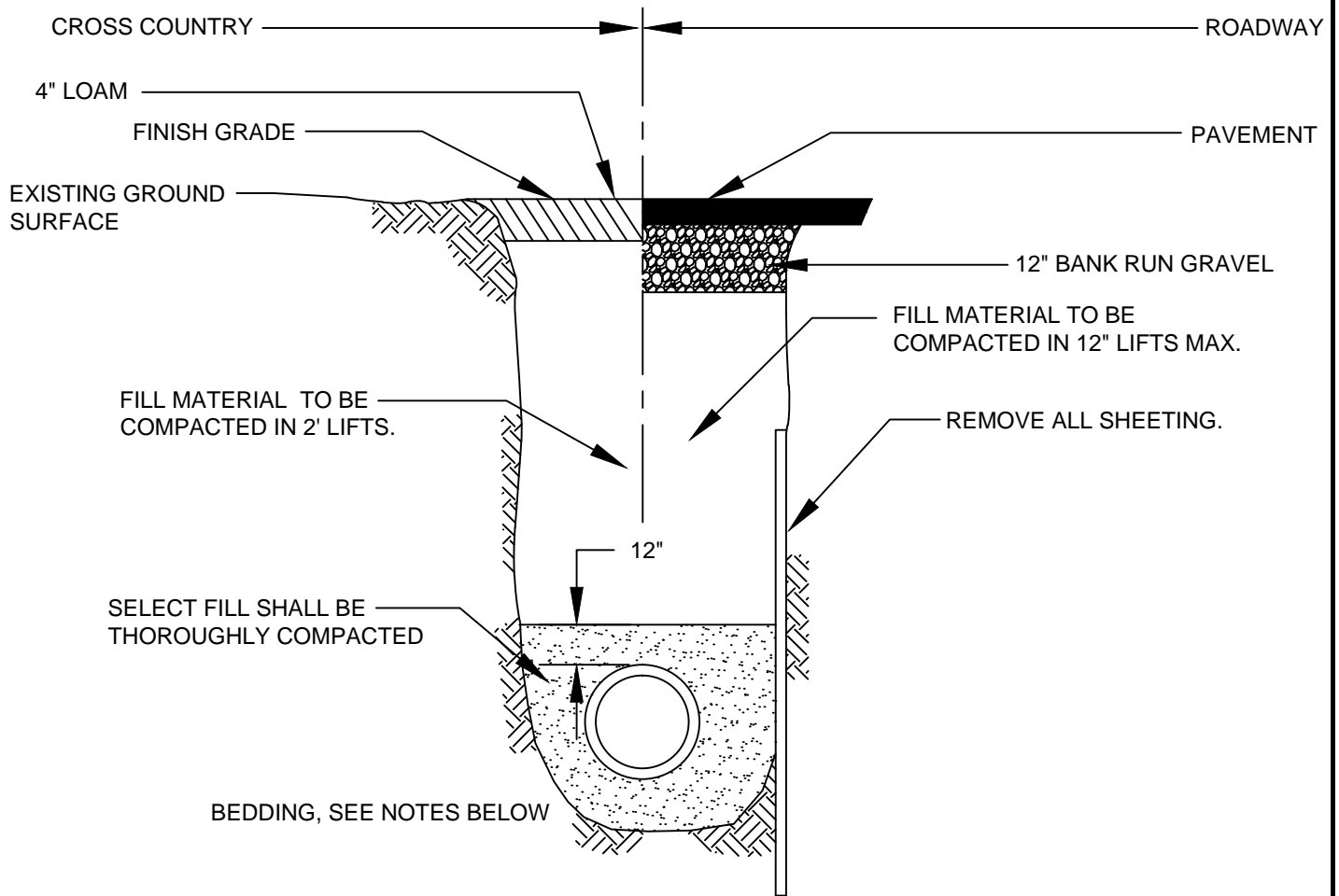
1. ALL INSTALLATIONS SHALL CONFORM TO TOWN OF ARLINGTON STANDARD WATER REGULATIONS & SPECIFICATIONS.
2. SPECIFIC THRUST BLOCK DESIGN SHALL CONFORM TO AWWA GUIDELINES.
3. PLACE 4 mil. POLYETHYLENE BETWEEN CONCRETE AND FITTING (CONCRETE SHALL NOT INTERFERE WITH JOINT).
4. MINIMUM CONCRETE THICKNESS SHALL BE 12 INCHES.
5. THRUST BLOCK ORIENTATION SHALL BE SUCH THAT THE CENTER OF THE FITTING CORRESPONDS WITH THE CENTER OF THE THRUST BLOCK.
6. THE MINIMUM ALLOWABLE ANGLE (EITHER VERTICAL OR HORIZONTAL) SHALL BE 45 DEGREES.



**TYPICAL THRUST
BLOCK DETAIL**

OCT. 2014
NOT TO SCALE
REVISION
①

W-0005



NOTE: 5'-0" MIN. COVER

NOTE:

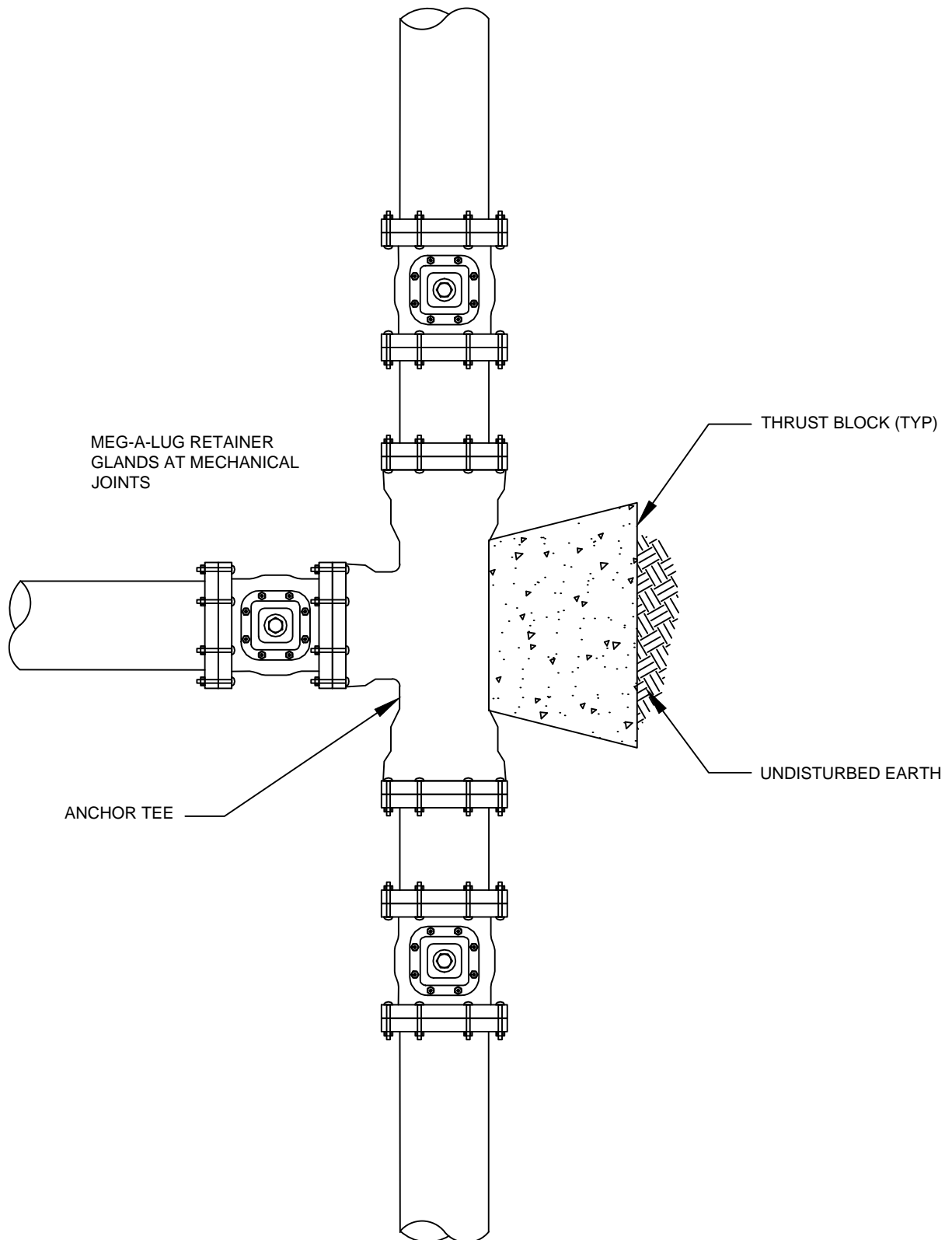
1. ALL INSTALLATIONS SHALL CONFORM TO TOWN OF ARLINGTON STANDARD WATER REGULATIONS & SPECIFICATIONS.
2. TOWN OF ARLINGTON MAY REQUIRE FLOWABLE FILL AT ITS DISCRETION.
3. FOR LOCATIONS WHERE LEDGE IS NOT ENCOUNTERED IN TRENCH, PIPE SHALL BE LAID ON SAND BEDDING CONSISTENT WITH AWWA GUIDELINES.
4. FOR LOCATIONS WHERE LEDGE IS ENCOUNTERED, SAND BEDDING SHALL BE MINIMUM OF 12" THICK UNDER PIPE.
5. FILL MATERIAL SHALL BE COMPACTED TO 95% PROCTOR DENSITY.



TYPICAL WATER MAIN TRENCH DETAIL

OCT. 2014
NOT TO SCALE
REVISION
①

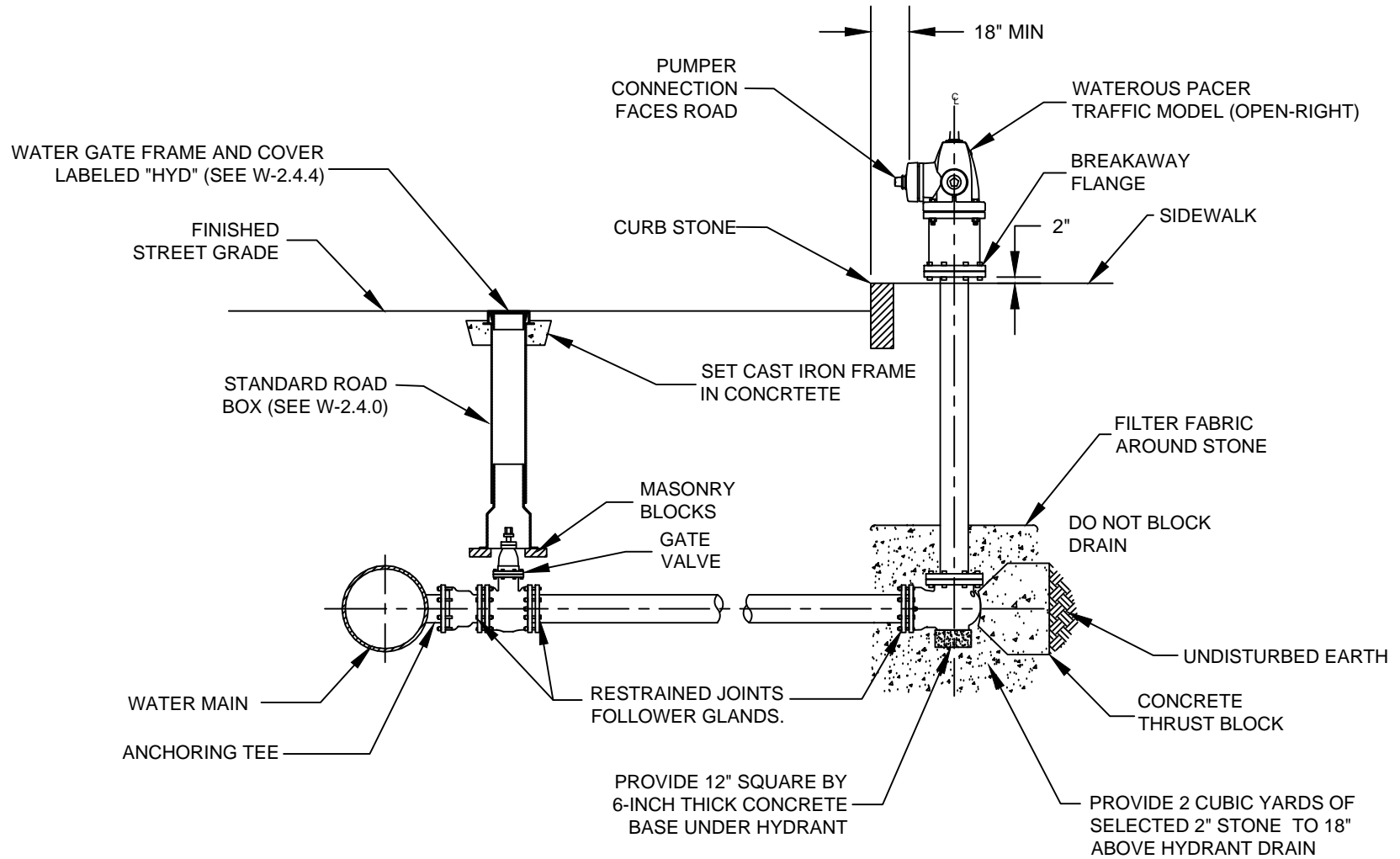
W-0006



NOTE:

1. ALL INSTALLATIONS SHALL CONFORM TO TOWN OF ARLINGTON STANDARD WATER REGULATIONS & SPECIFICATIONS.

	<p>TYPICAL ANCHOR TEE INSTALLATION</p>	OCT. 2014	<p>W-0007</p>
		NOT TO SCALE	
		REVISION	
		<p>①</p>	



NOTE:

1. ALL INSTALLATIONS SHALL CONFORM TO TOWN OF ARLINGTON STANDARD WATER REGULATIONS & SPECIFICATIONS.



TYPICAL FIRE HYDRANT INSTALLATION

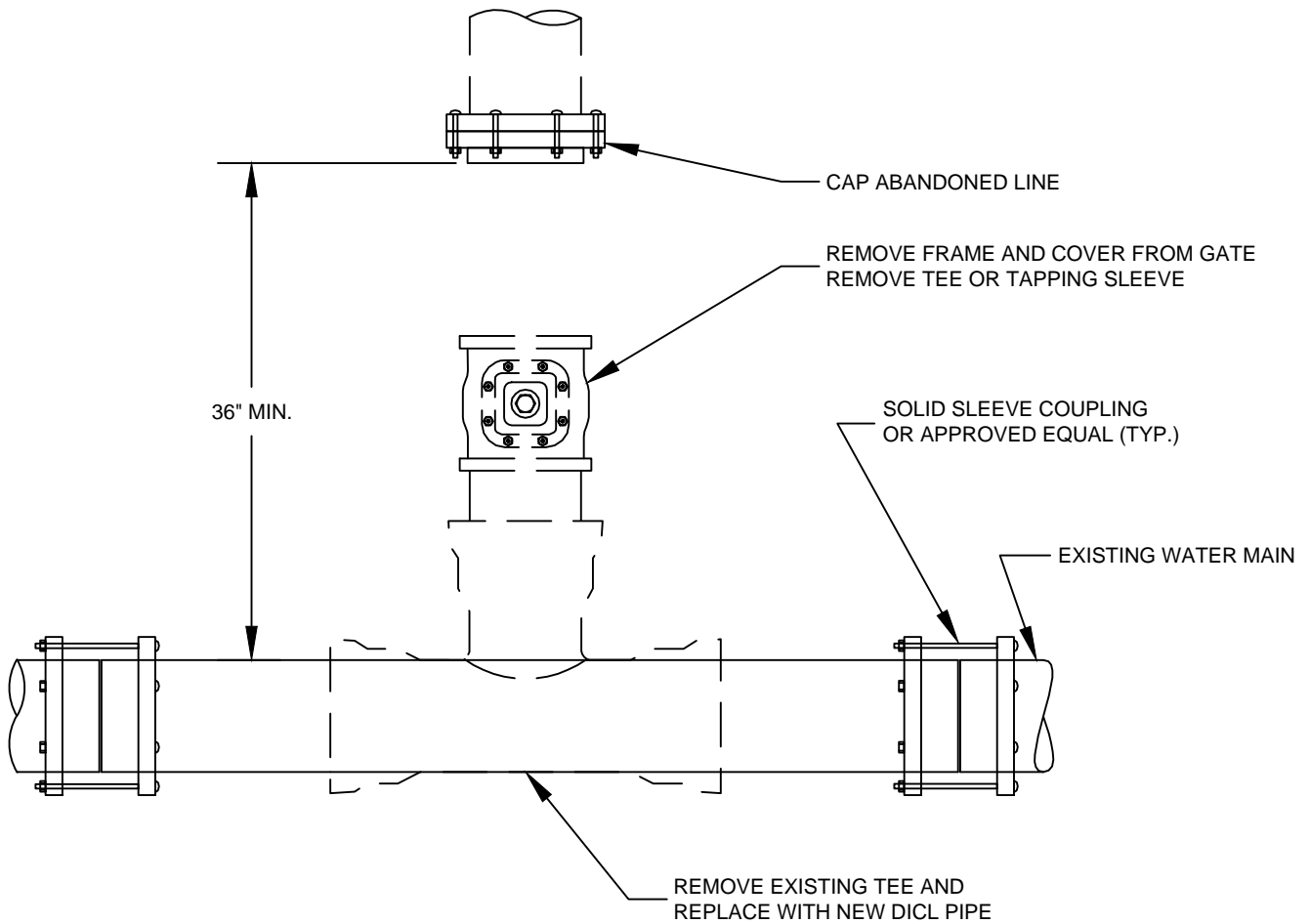
OCT. 2014

NOT TO SCALE

REVISION

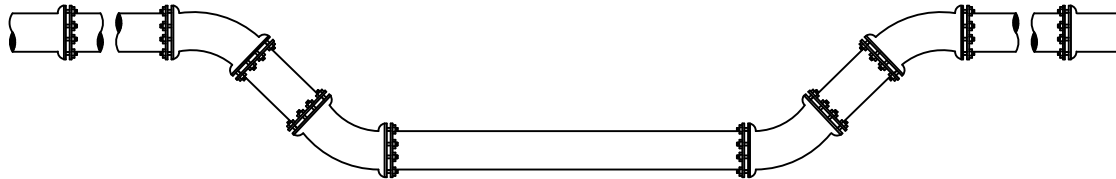
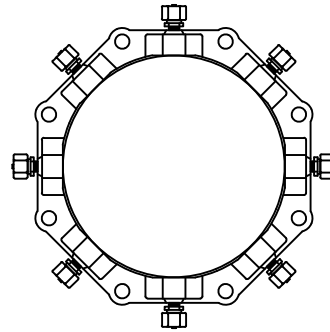
①

W-0008



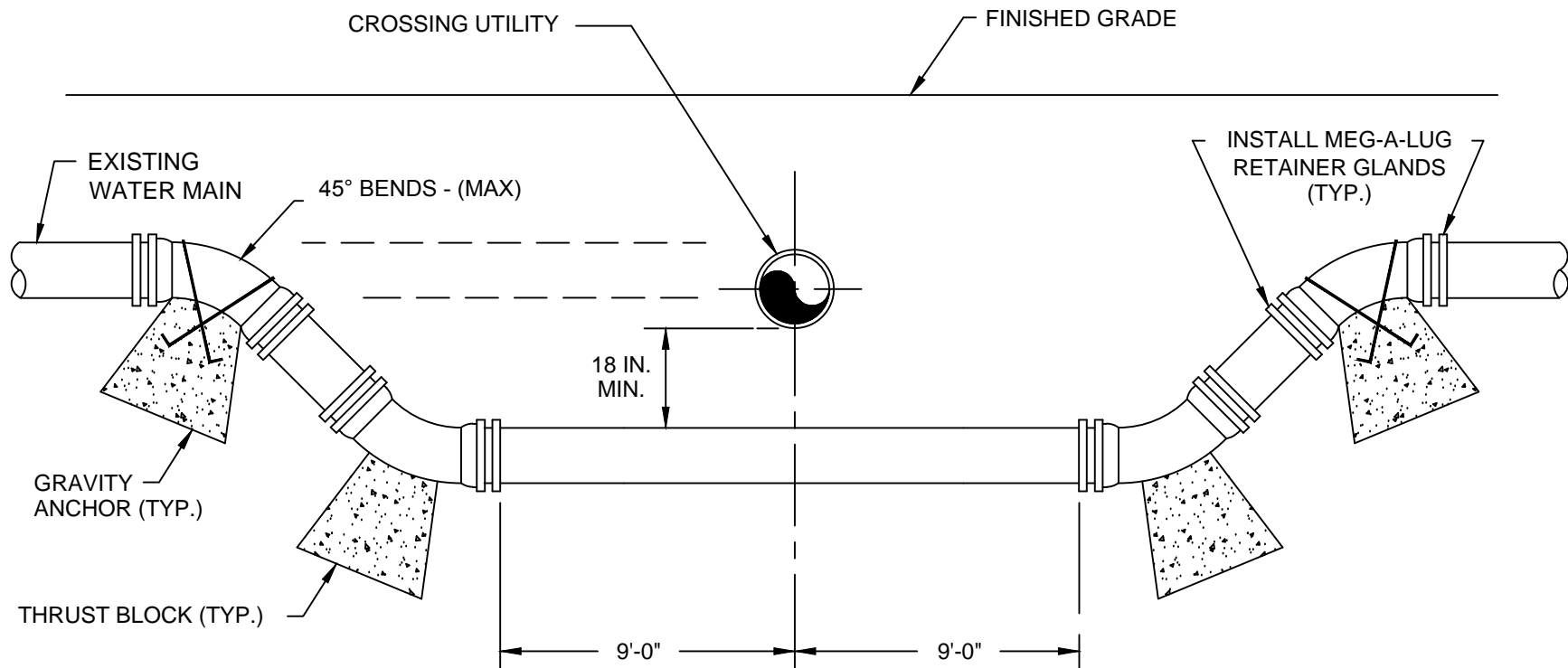
NOTE:

1. ALL INSTALLATIONS SHALL CONFORM TO TOWN OF ARLINGTON STANDARD WATER REGULATIONS & SPECIFICATIONS.



NOTE:

1. ALL INSTALLATIONS SHALL CONFORM TO TOWN OF ARLINGTON STANDARD WATER REGULATIONS & SPECIFICATIONS.
2. DEVICES NEED TO BE PLACED BEYOND THE AREA OF RESTRAINTS IN ACCORDANCE WITH MANUFACTURES RECOMMENDATIONS.



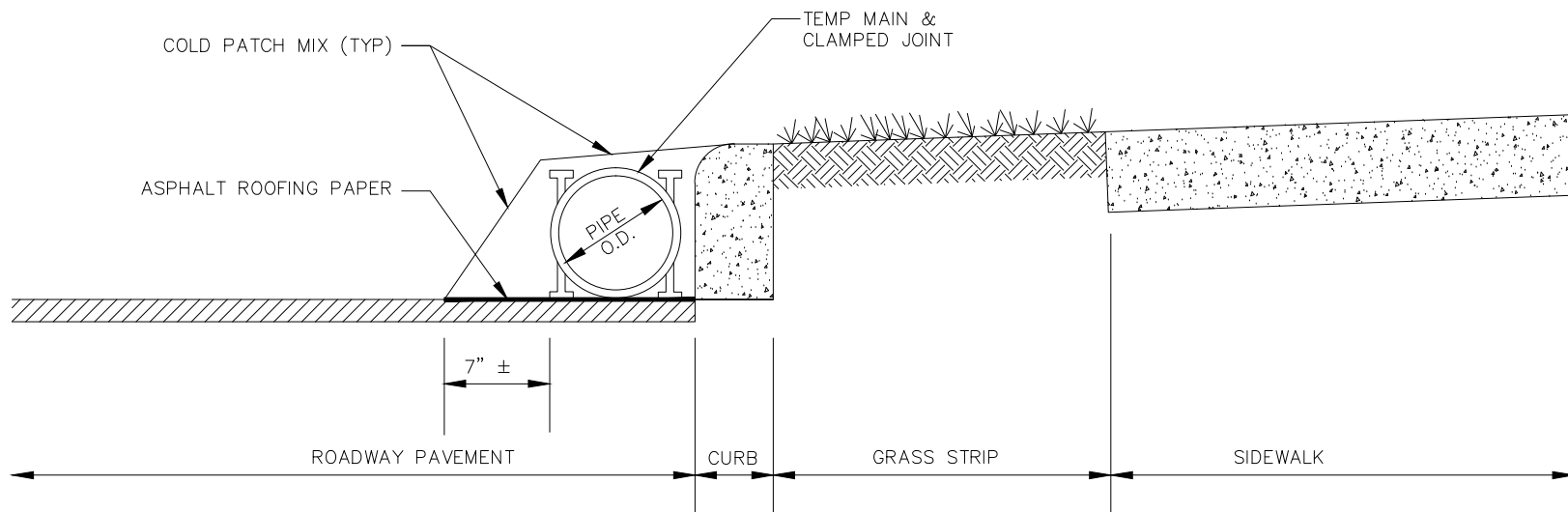
NOTE:

1. ALL INSTALLATIONS SHALL CONFORM TO TOWN OF ARLINGTON STANDARD WATER REGULATIONS & SPECIFICATIONS.
2. ALL FITTINGS AND JOINTS IN LOWERING AREA TO BE RESTRAINED.
3. WHEN IT IS IMPOSSIBLE TO OBTAIN HORIZONTAL OR VERTICAL SEPARATION AS INDICATED IN THE DETAIL ABOVE, BOTH THE WATER AND THE SEWER SHOULD BE ENCASED IN CONTROL DENSITY FILL FOR A DISTANCE OF 10 FEET ON EITHER SIDE OF THE CROSSING.
4. ALL DUCTILE IRON PIPE AND FITTINGS SHALL BE WRAPPED WITH POLYETHYLENE ENCASEMENT WHEN CONTACTING CONTROL DENSITY FILL.



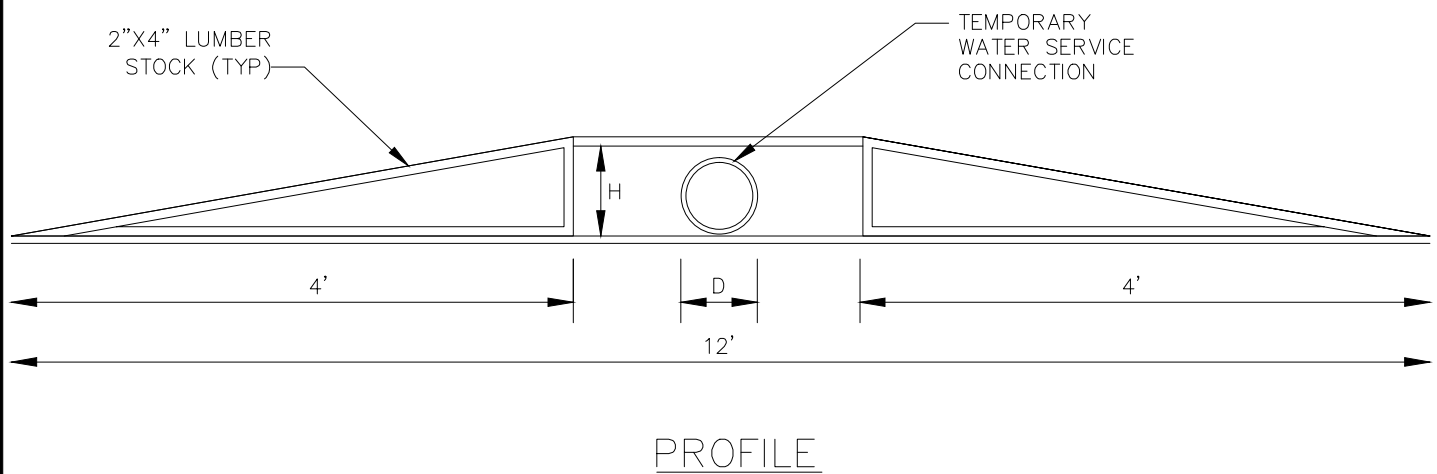
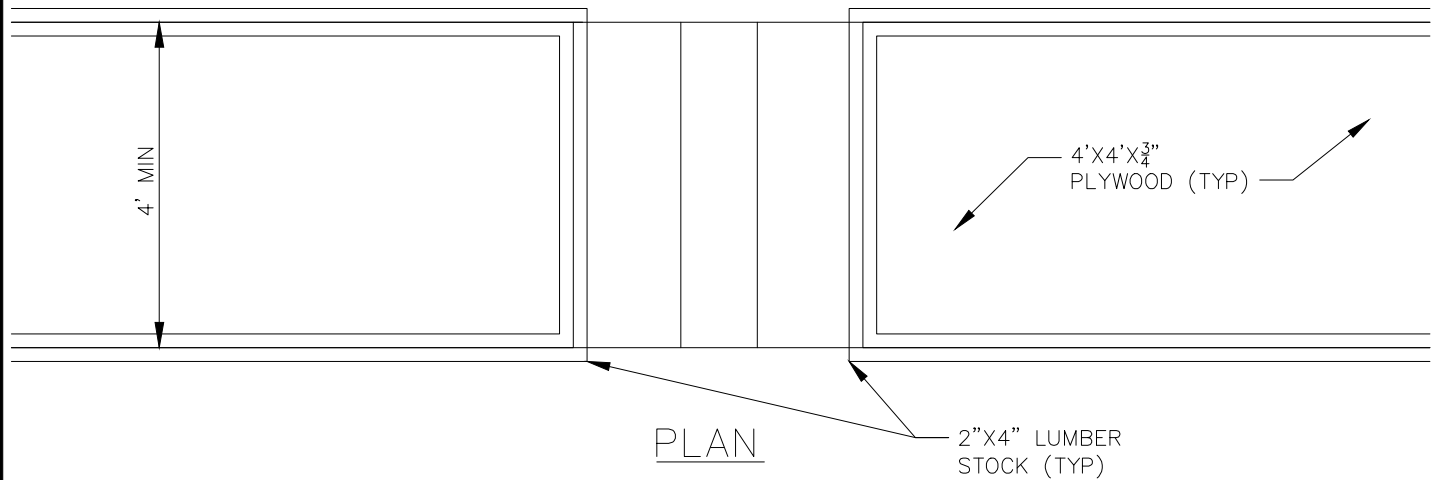
WATER MAIN UTILITY CROSSING DETAIL

OCT. 2014	W-0011
NOT TO SCALE	
REVISION ①	



NOTES:

1. INSTALL COLD PATCH MIX AS INDICATED AT EACH CLAMPED JOINT.



NOTES:

1. ADDITIONAL RAMPS TO BE INSTALLED AS DIRECTED BY THE ENGINEER.
2. FLASHING BARRIERS ARE REQUIRED ON STREET SIDE OF ALL RAMPS. ADDITIONAL BARRIERS TO BE SUPPLIED AS REQUIRED BY THE ENGINEER.
3. RAMP SECTIONS SHALL BE FASTENED TOGETHER TO PROVIDE STABILITY.

TABLE A:

<u>D</u>	<u>H</u>
2"	4"
4"	6"
5"	8"



WATER MAIN BYPASS
TEMPORARY PEDESTRIAN RAMP

OCT. 2014
NOT TO SCALE
REVISION
①

W-0013