



**DEPAVE**  
the **WAY** 

to a  
**GREENER ARLINGTON**





Credit: from "WATER: A Storymentary" Summer 2012 Youth Video Production made at SCAT



























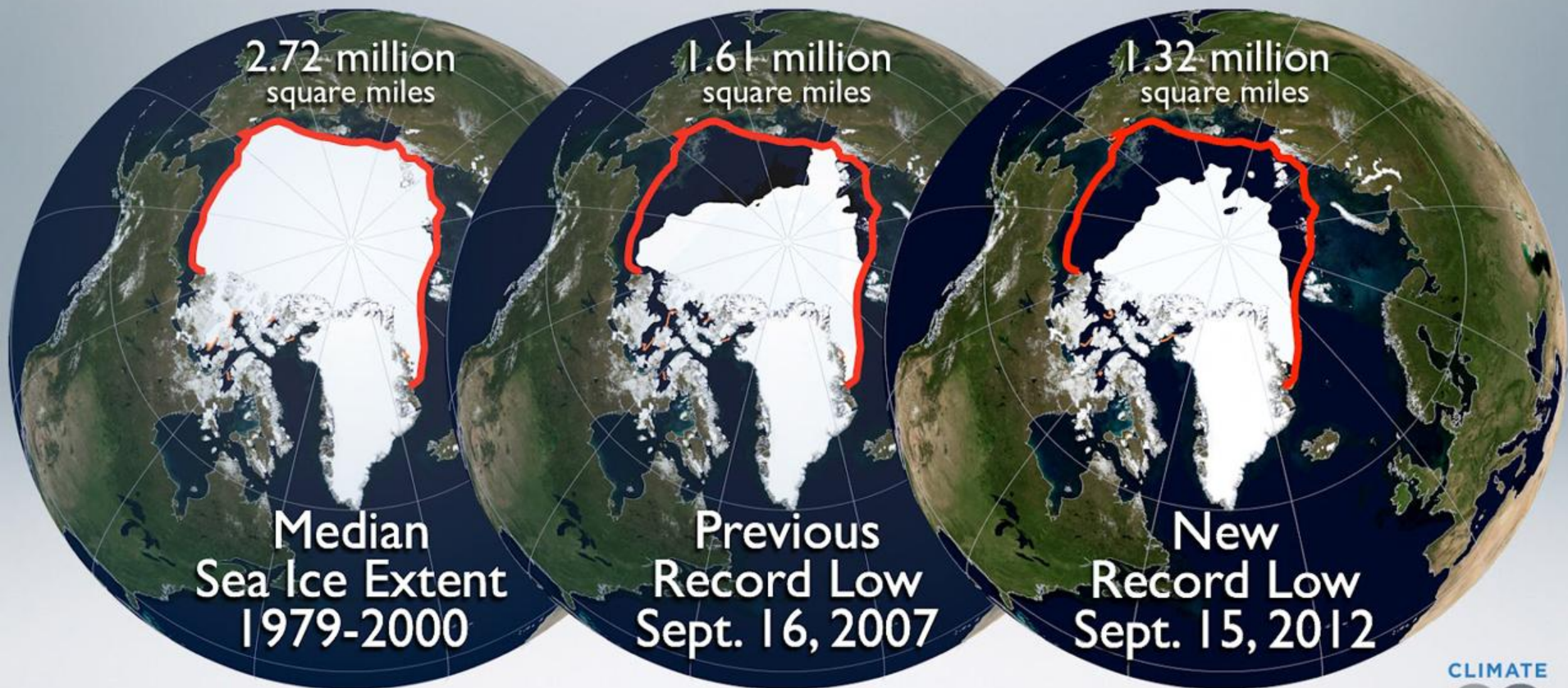








# RECORD LOW ARCTIC SEA ICE

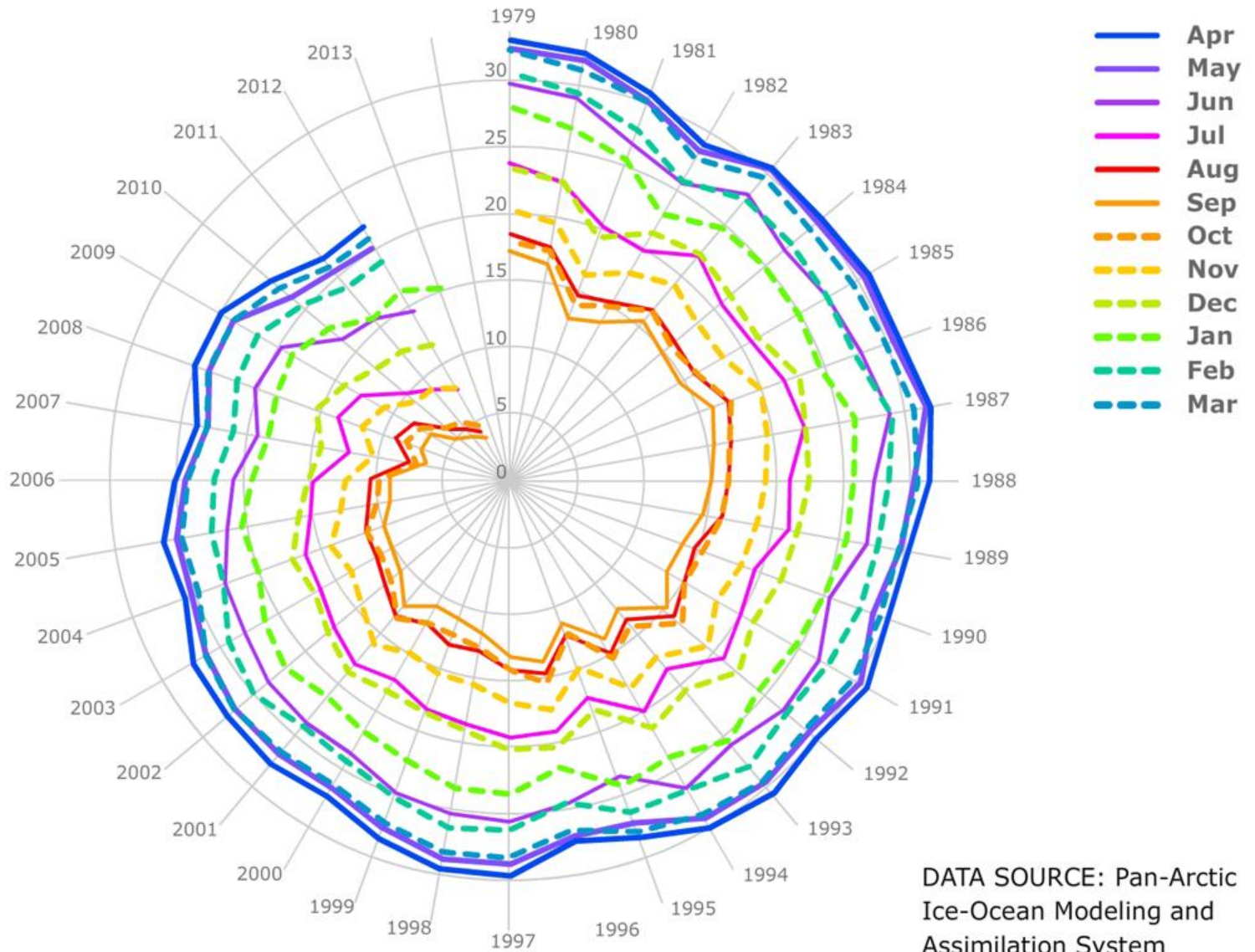


Source: The National Snow and Ice Data Center Sea Ice Index  
Records are for 5 day running averages



# ARCTIC DEATH SPIRAL

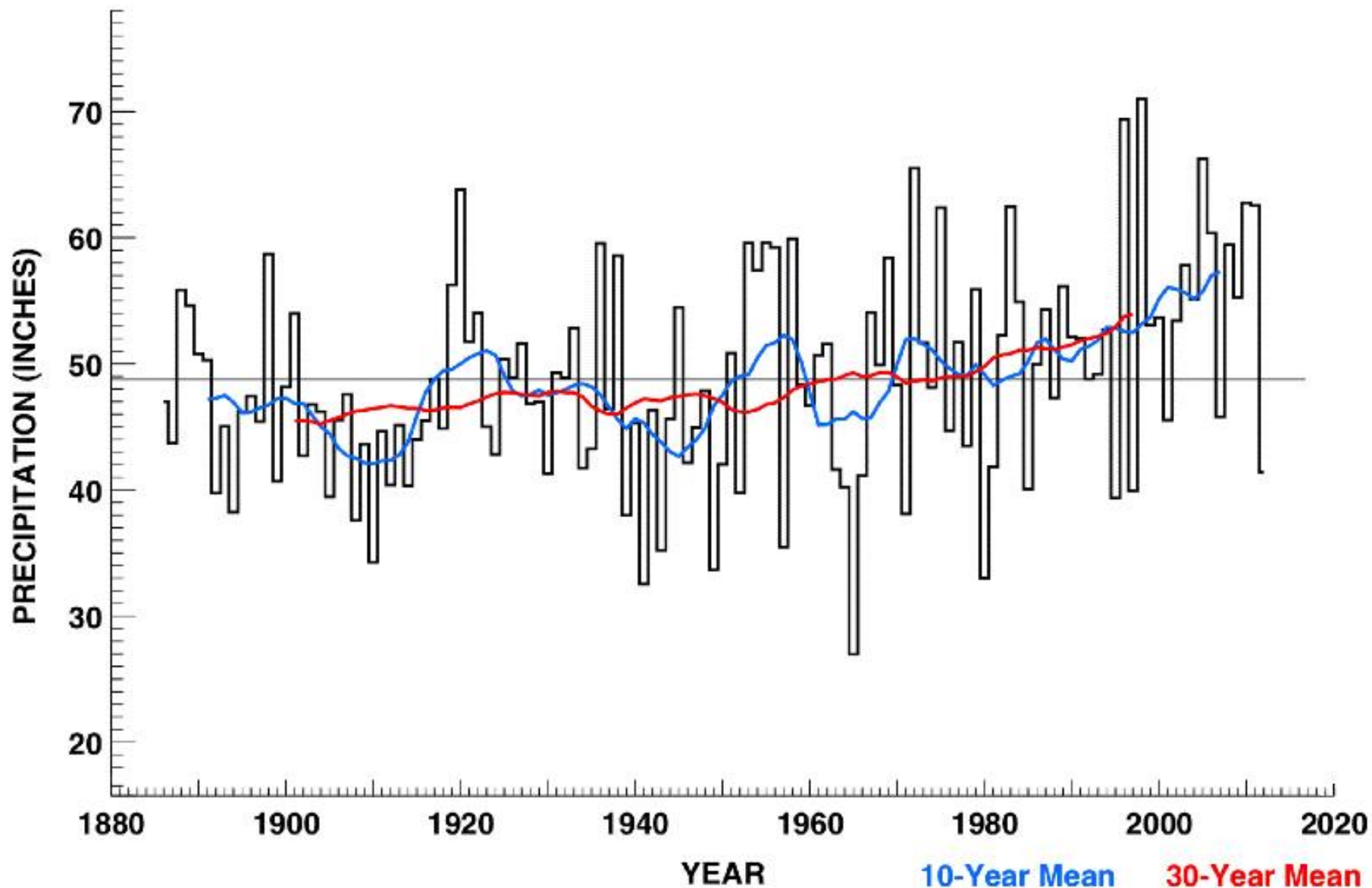
Arctic Sea Ice Volume (in  $10^3\text{km}^3$ )



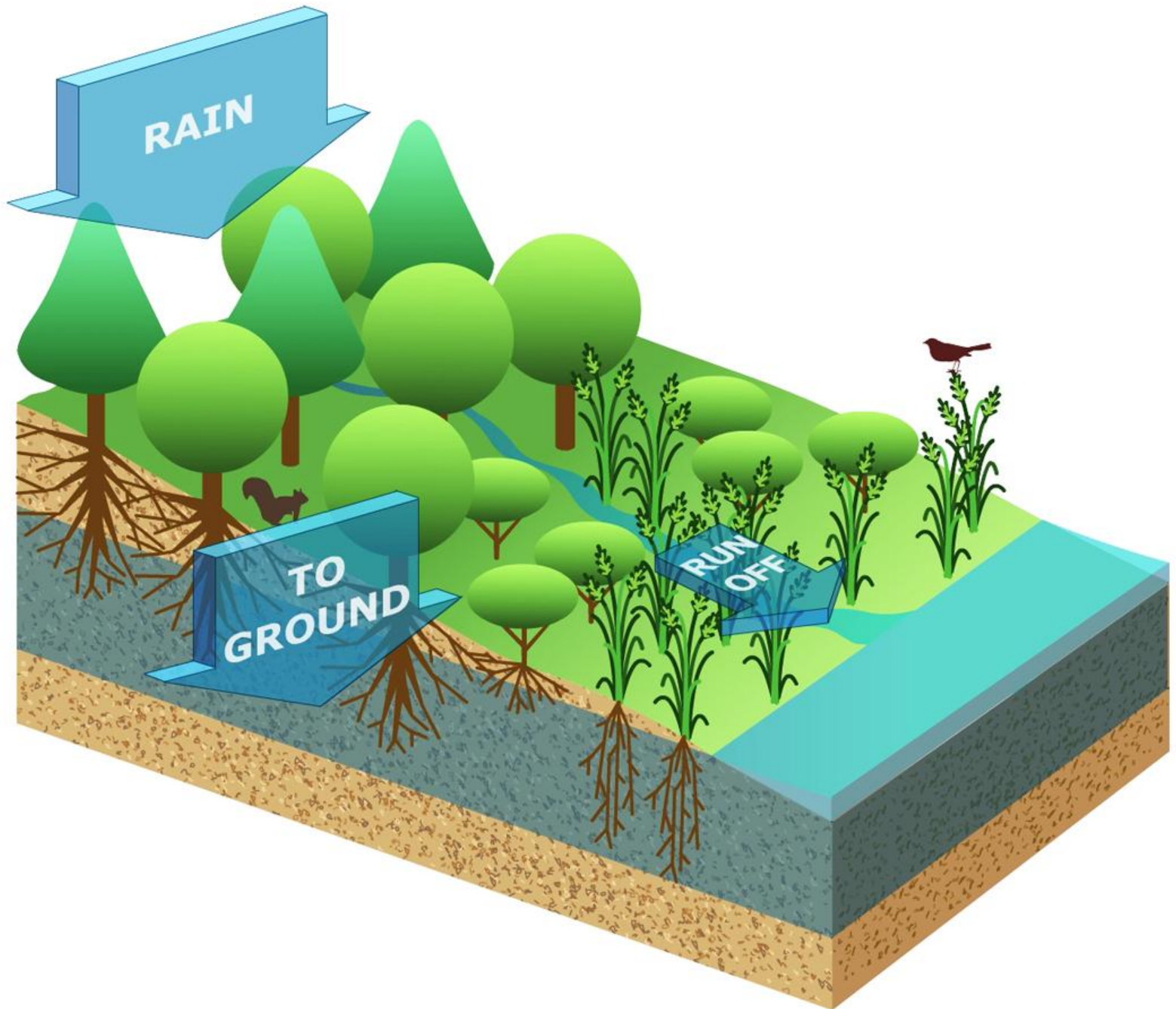
DATA SOURCE: Pan-Arctic Ice-Ocean Modeling and Assimilation System



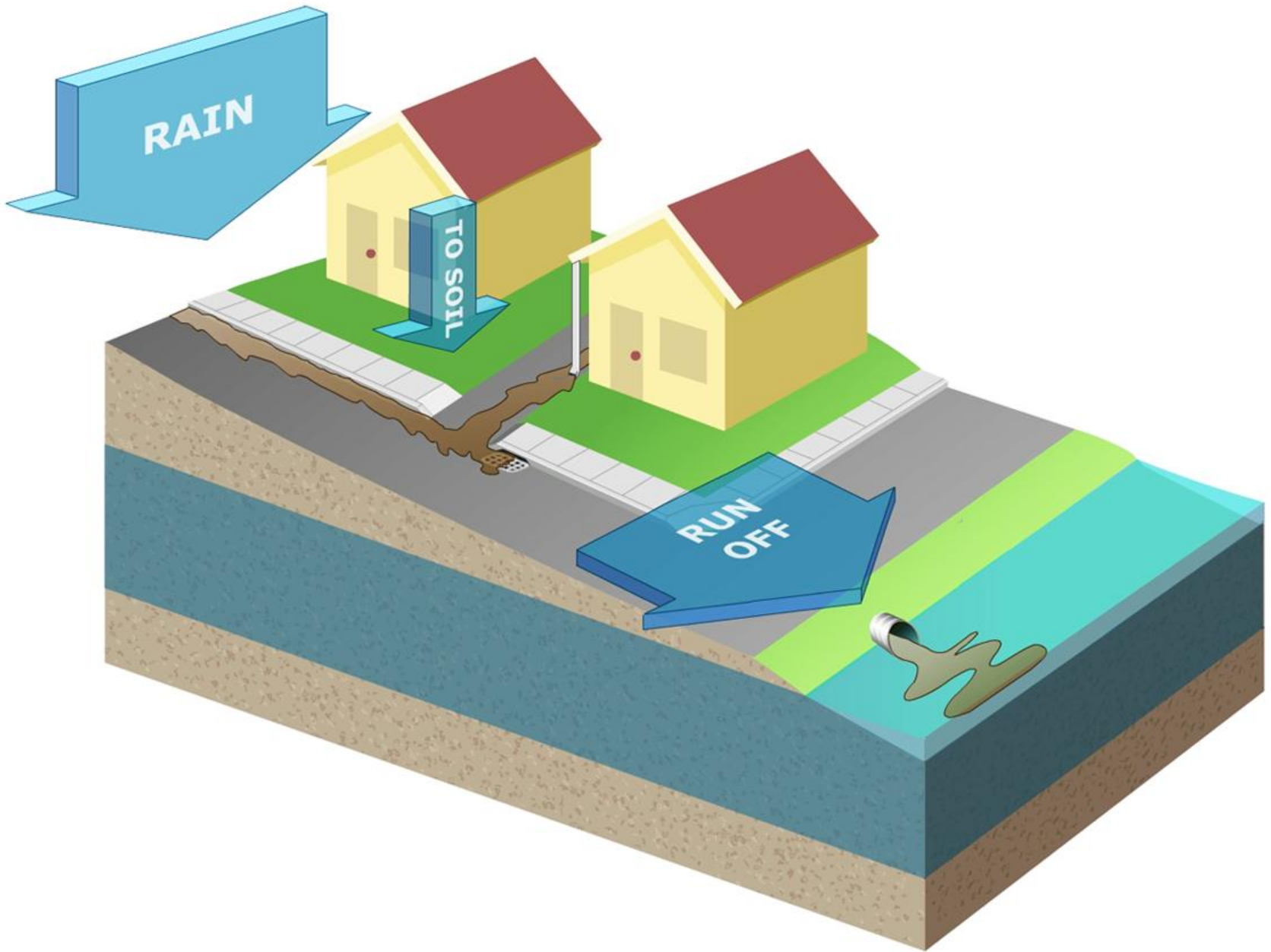
# BLUE HILL OBSERVATORY ANNUAL PRECIPITATION, 1886-2012



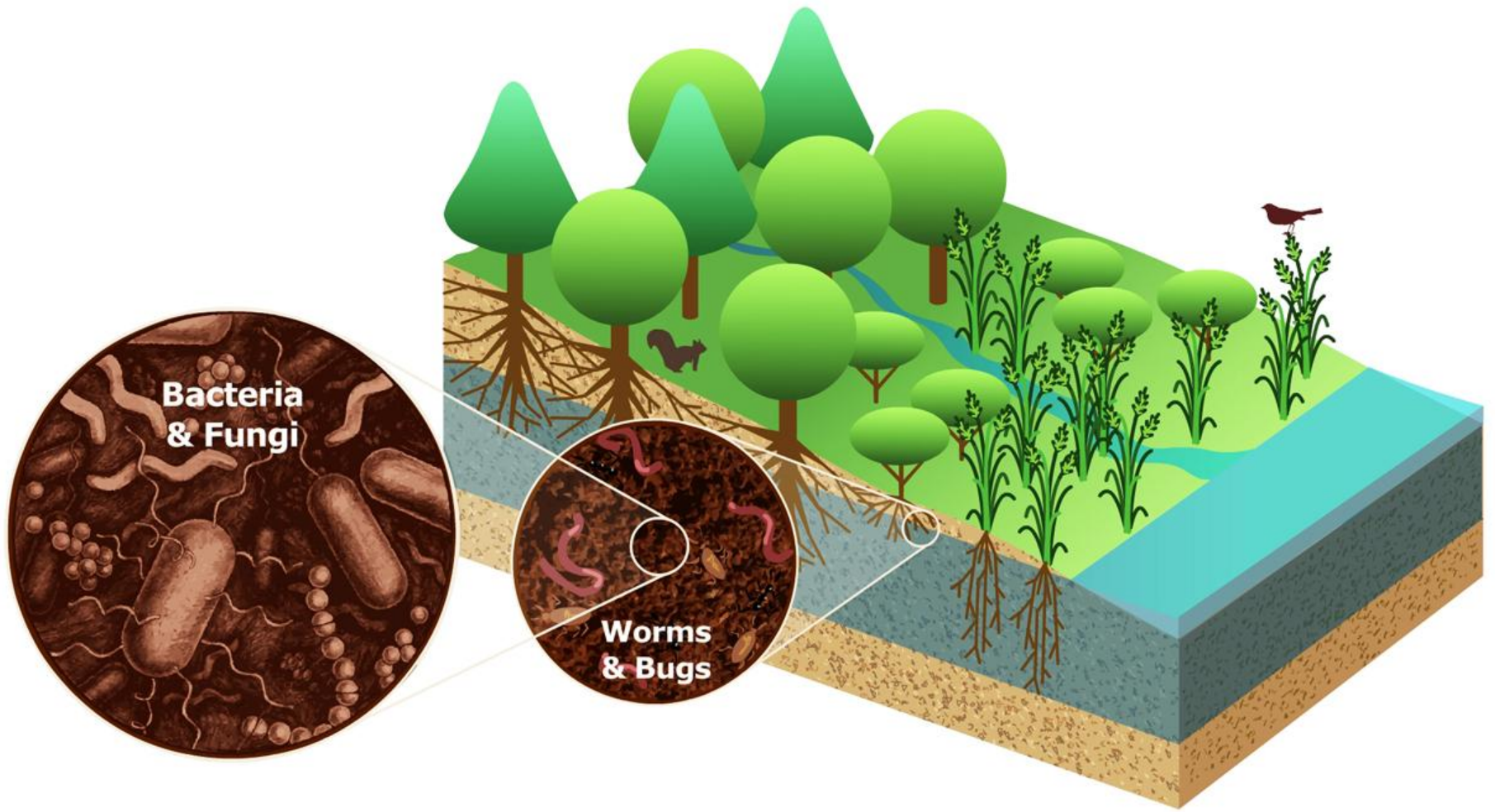




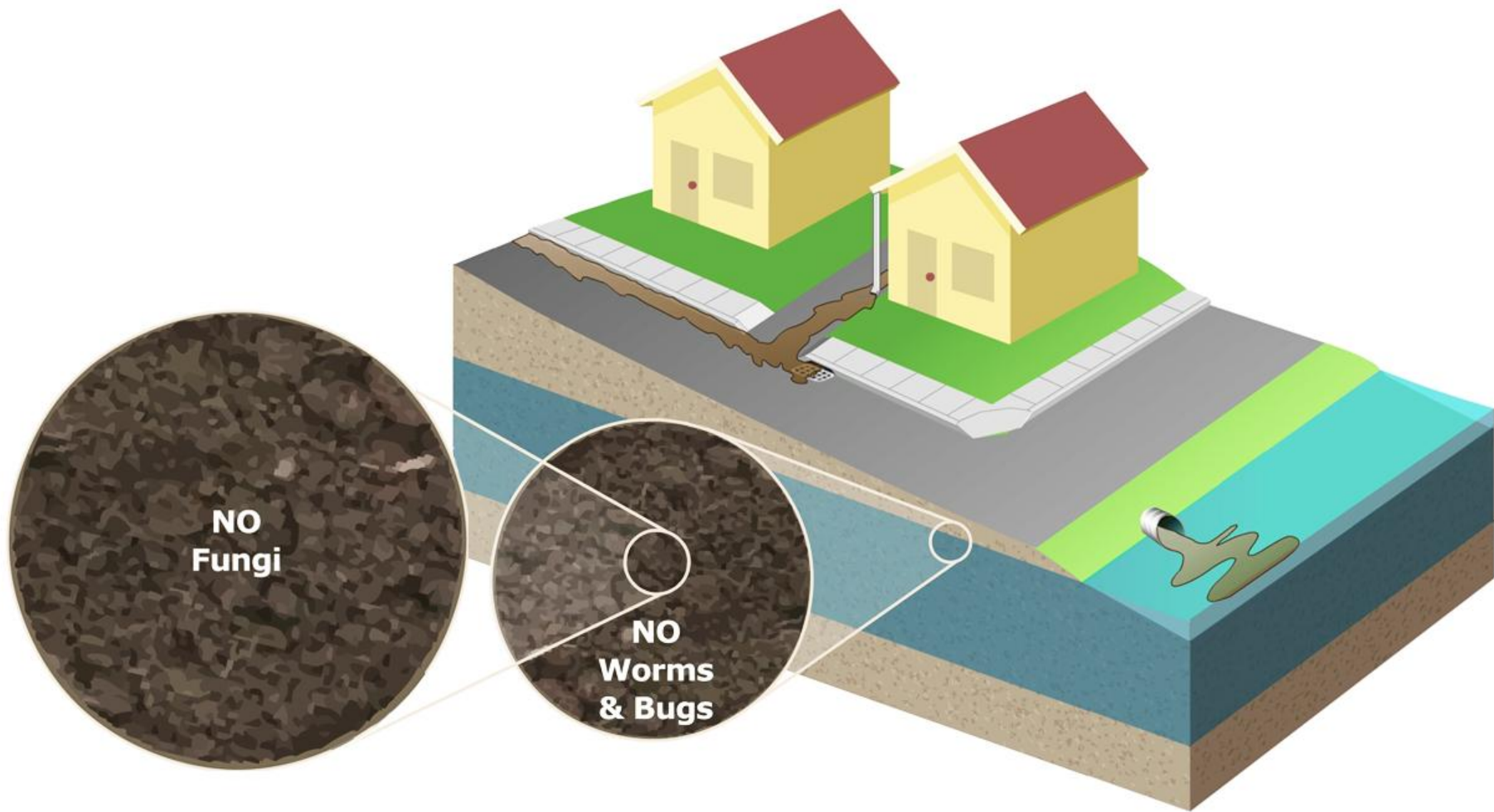








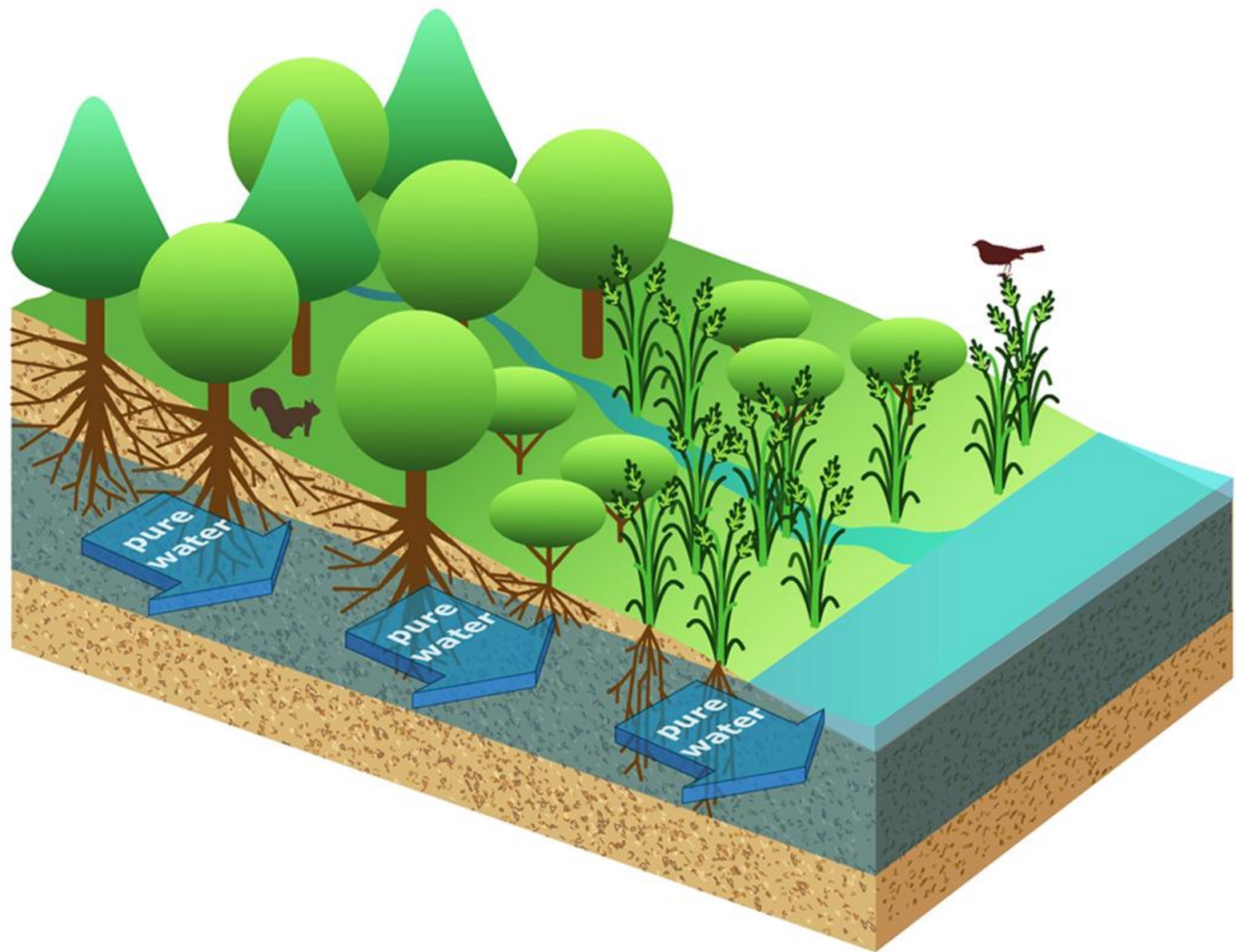




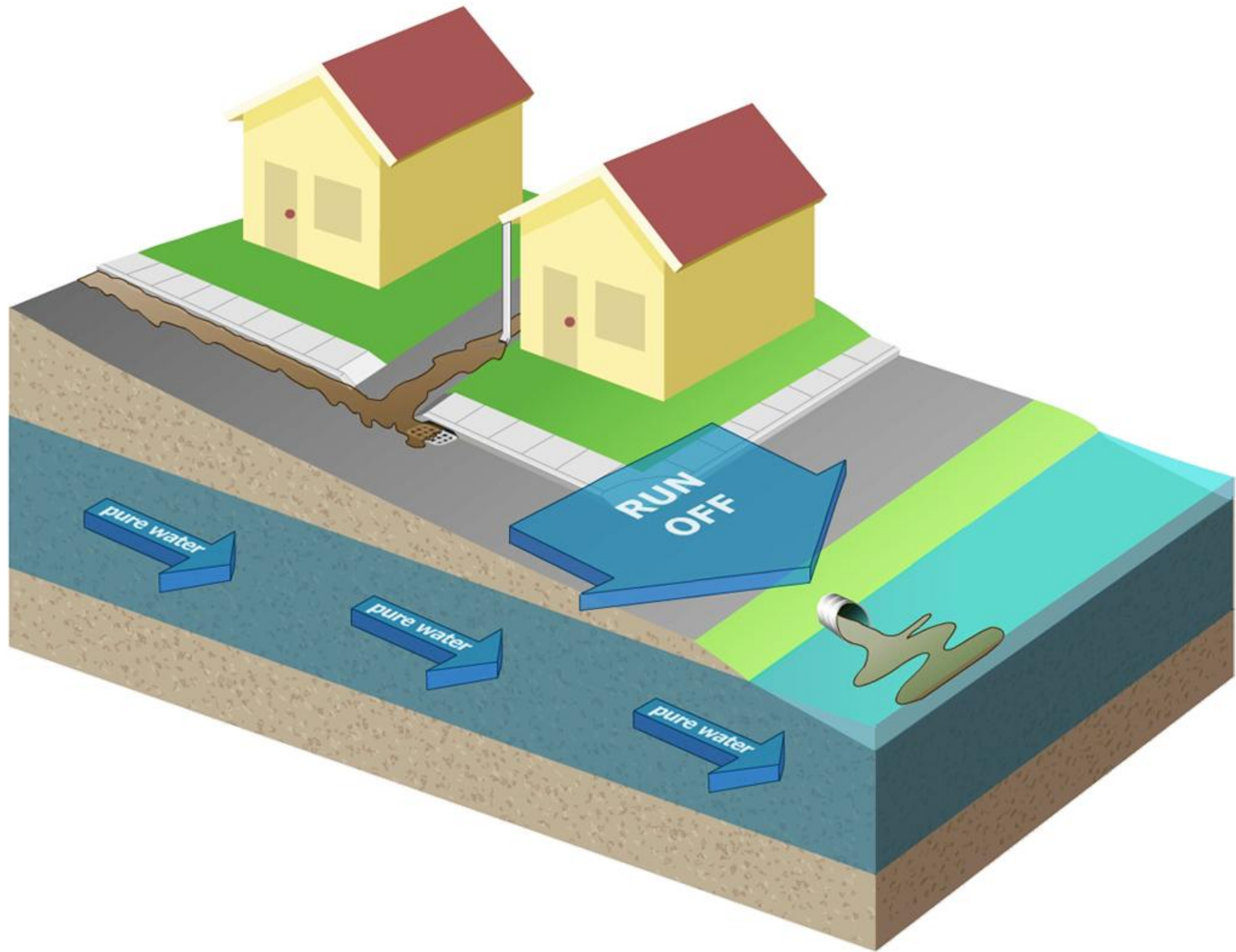
**NO  
Fungi**

**NO  
Worms  
& Bugs**



















# Asphalt

**With cracks: pry up with hand tools**

**Without cracks: rent a “walk behind” concrete saw**

















































# “New” asphalt without cracks

We rented a “walk behind” concrete saw











Jackson  
U.S.A.





WATER AND THE S...

What we have

What we need

FIELD

CRINITY CATHOLIC

















Somerville  
Climate  
Action

**DEPAVE**  
the  
**WAY**

Water in the SOIL, not in your basement







**DEPAVE the WAY**  
Maple Avenue Depaving Party

**BEFORE**

**DURING**

**AFTER**

OPEN YOUR MIND  
OPEN YOUR MOUTH  
OPEN YOUR EYES

**DEPAVE the WAY**  
Work for the 80% that is yours

















SAFETY QUEEN

SOMERVILLE  
A CITY OF SQUA









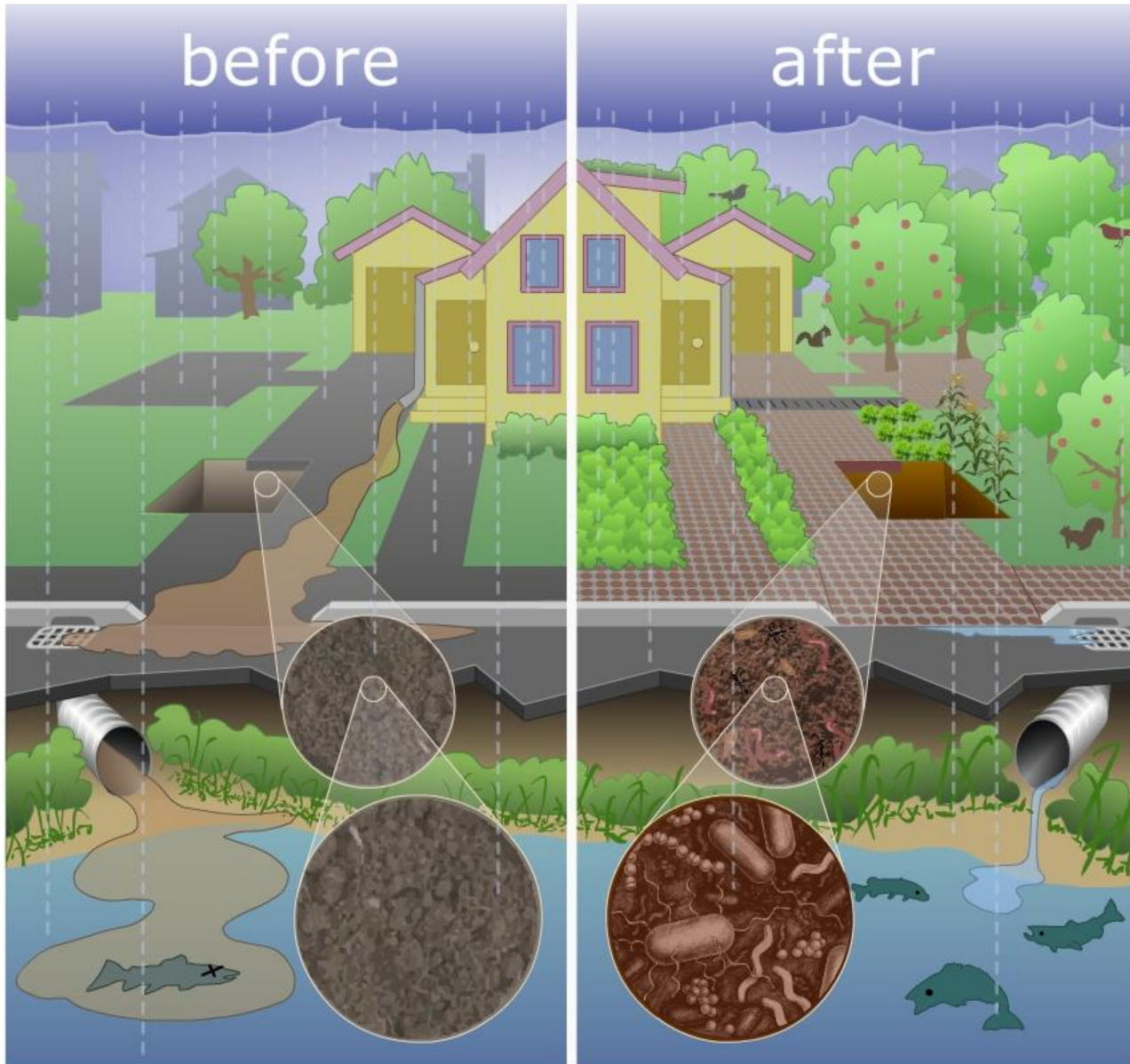


# Benefits to Depaving

- \* Decrease water pollution
- \* Cool air in the summer
- \* Increase air quality
- \* Benefit from more green spaces



# Benefits: Clean Water

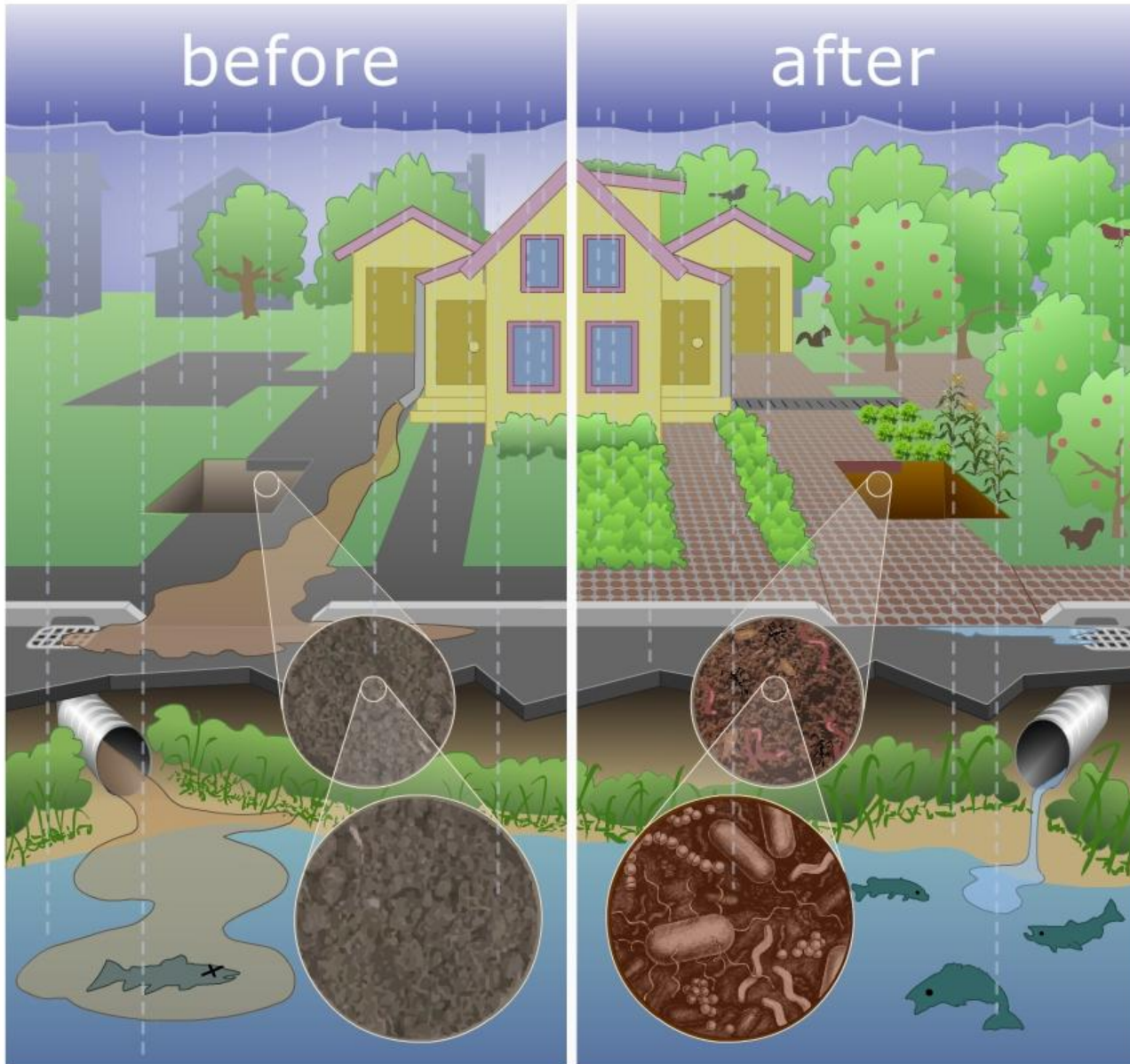


- Purify water by soaking up the rain
- Increase soil health
- Reduce pollution in waterways





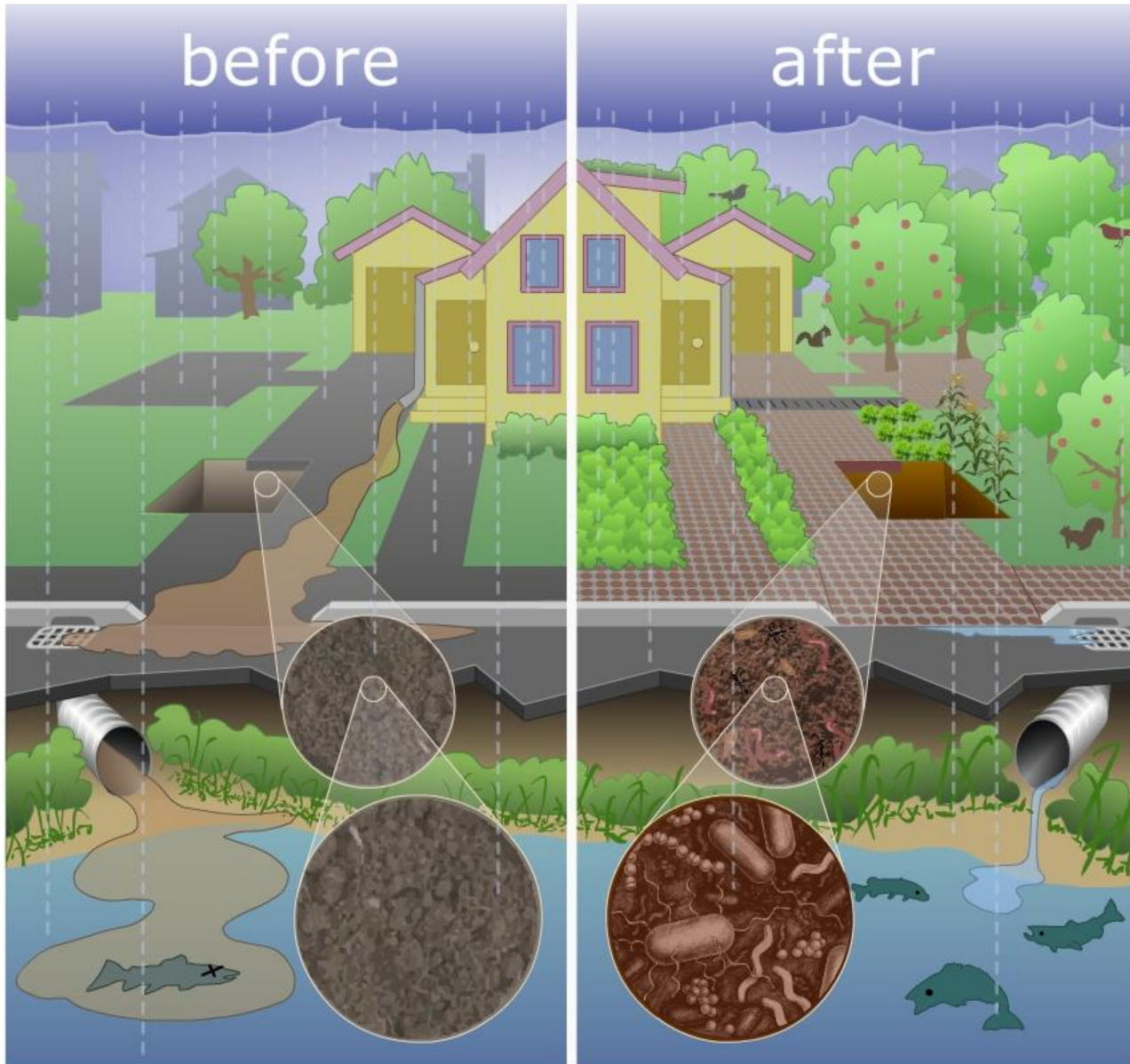
# Benefits: Cool Summer Air



- Trees and bushes make shade
- Less need for fans & air conditioners, due to less hot pavement



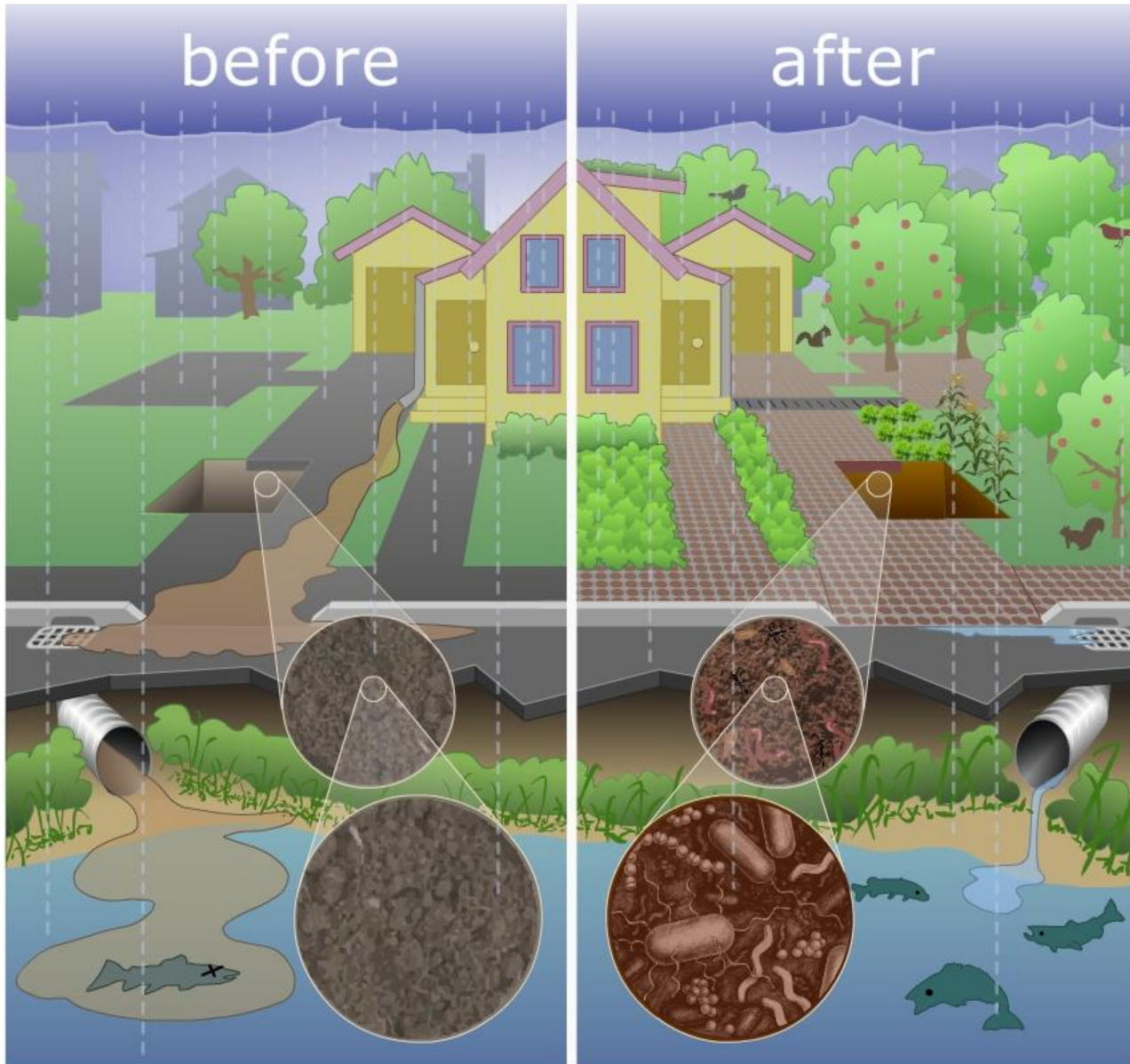
# Benefits: Better Air Quality



- Trees for fewer particulates in the air
- More visual privacy and less street noise



# Benefits: More Green Space



- Local healthy food from gardens
- More birds & pollenating bees
- Reduced harsh winds
- Added beauty





**composted soil**

**under asphalt  
for 10 years**





A woman with short brown hair, wearing sunglasses and a black t-shirt, is smiling and holding a yellow cup. She is wearing blue jeans and is standing in the foreground.

A man wearing a red patterned short-sleeved shirt and a light-colored baseball cap is looking down. He has a name tag on his shirt and is standing in the middle ground.

A man wearing a blue t-shirt with a circular logo, a grey baseball cap, and glasses is smiling. He is holding a green plate and a white napkin. He is wearing blue jeans and is standing in the foreground.

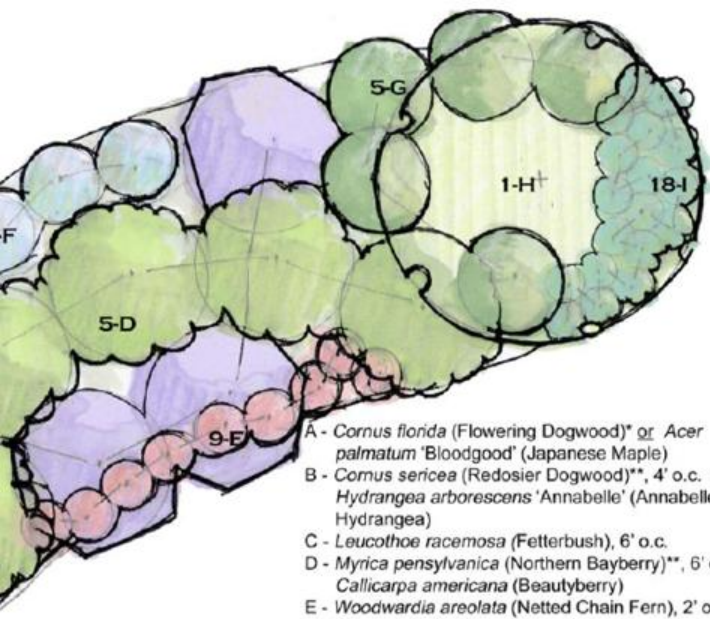
A wooden table in the background holds various items, including a red pot, a bowl of bananas, a bowl of apples, and a green plate. There are also some plants and flowers in the foreground.

A stack of firewood is visible on the left side of the image. A white bag with the word "ICE" is partially visible in the bottom left corner.

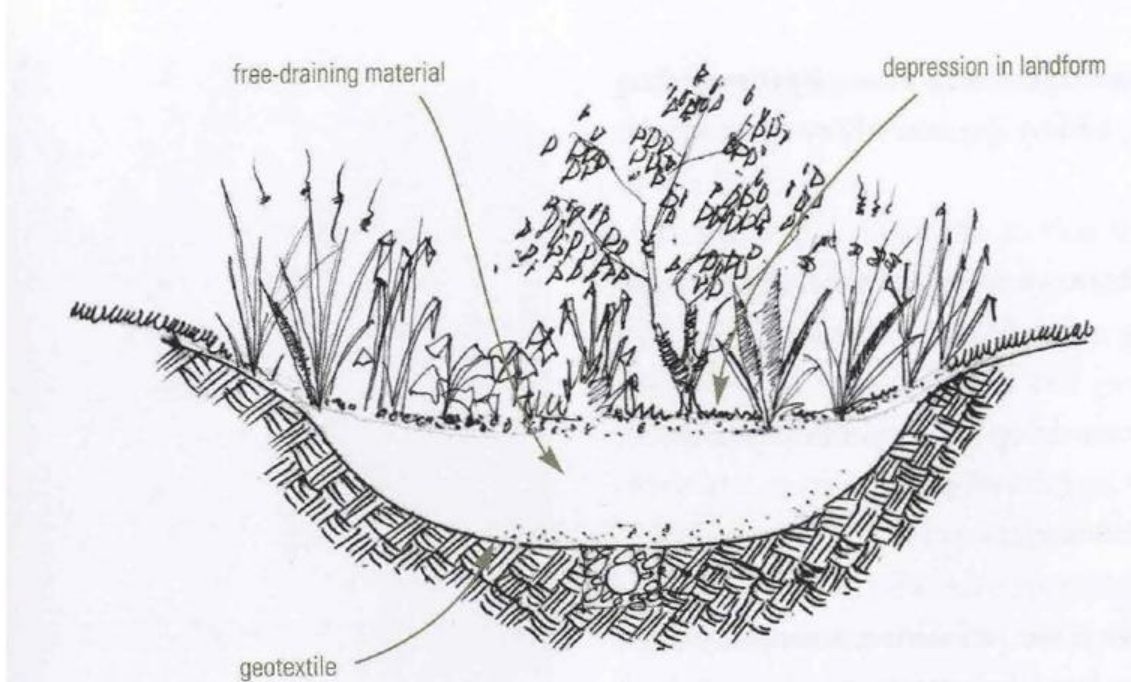








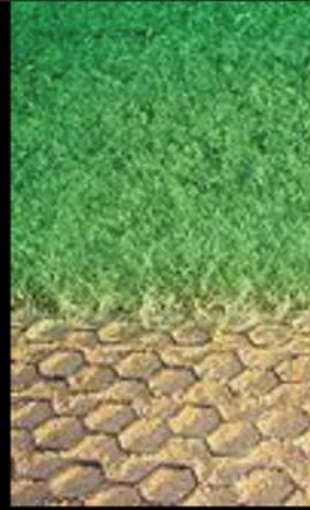
- A - *Cornus florida* (Flowering Dogwood)\* or *Acer palmatum* 'Bloodgood' (Japanese Maple)
- B - *Cornus sericea* (Redosier Dogwood)\*\*\*, 4' o.c. or *Hydrangea arborescens* 'Annabelle' (Annabelle Hydrangea)
- C - *Leucothoe racemosa* (Fetterbush), 6' o.c.
- D - *Myrica pensylvanica* (Northern Bayberry)\*\*\*, 6' o.c. or *Callicarpa americana* (Beautyberry)
- E - *Woodwardia areolata* (Netted Chain Fern), 2' o.c.
- F - *Kalmia latifolia* 'Elf' or 'Minuet', 3' o.c.
- G - *Clethra alnifolia* 'Ruby Spice', 4' o.c.
- H - *Chionanthus virginicus* (Fringetree)
- I - *Polystichum acrostichoides* (Christmas Fern), 18" o.c.







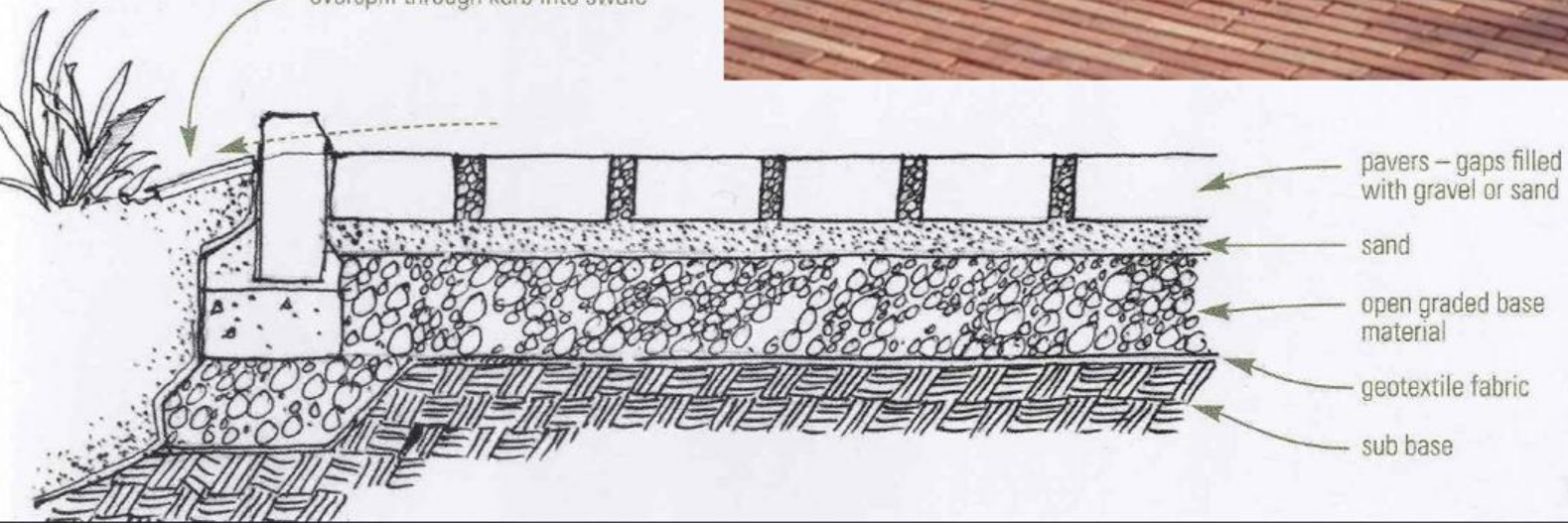








overspill through kerb into swale









# Frazer Park - BEFORE

in Portland, Oregon





# Frazer Park - AFTER

in Portland, Oregon



Photo by Brynn Eiffler





**DEPAVE**  
the **WAY**

Water in the SOIL, not in your basement







Somerville  
Climate  
Action

**DEPAVE**  
the **WAY**

Water in the SOIL, not in your basement





DE-PAVING THE WAY  
FOR OUR  
CLIMATE 50

TRINITY  
ATHOLIC

















Somerville Climate Action is a grass-roots collaborative working for a safe and stable climate while helping to build a resilient, just and sustainable community.

We focus on transitioning

FROM:

fossil fuel dependence --->

ecological degradation --->

economic instability

social disconnection

TO:

low carbon lifestyles

ecosystem restoration

---> a local living economy

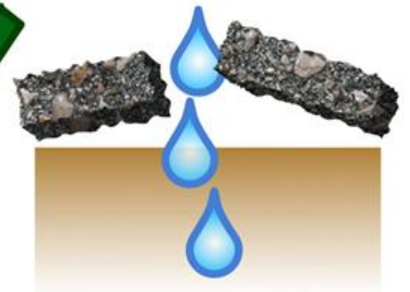
---> a vital close-knit community



**DEPAVE**

**the**

**WAY**



to a **SUSTAINABLE ARLINGTON**