



Living Roof Bus Shelter  
Initiative  
*A Model for Public/Private  
Partnerships*

Arlington, MA  
2015





# Storm Water Impacting Arlington









# Benefits

- Skills Training & Job Opportunities
- Sets Example for Larger Buildings Nearby
- Education & Advertising Opportunities
- Invites Discussions About “Greening” Other Impermeable Surfaces
- Engages with Pedestrians, Cars & Busses



# Training, Jobs, & Maintenance







TALBOT AVENUE

BUS

I build

# “Green” Infrastructure

Green Infrastructure (GI) is generally seen as a network providing the “ingredients” for solving urban and climatic challenges by building with nature. The main components of this approach include storm water management, climate adaptation, less heat stress, more biodiversity, food production, better air quality, sustainable energy production, clean water and healthy soils, as well as the more people friendly functions such as increased quality of life through recreation and providing shade and shelter in and around towns and cities.



# A Small Piece of a Larger Picture

- 1 shelter offsets approximately 50 gallons per 1 inch rain event
- 13 shelters offset 623 gallons per 1 inch rain event
- 20 shelters offset 1,000 gallons per 1 inch rain event
- 545 shelters = 1 acre
- 545 shelters offset 27,000 gallons per 1 inch rain event
- We receive between 41-47 inches of rainfall average each year.



JCDecaux



**You're under a Living Roof.**  
Just a small piece of the larger picture.

Supported by the Partnership for Sustainable Communities

Fairmount/Andgo  
Fairmount/Andgo

work up the rain  
A 21st Century Solution

Massachusetts Bay Transportation Authority

greenliving  
technology

JCDecaux

LAUSD  
L.A. METRO

GREENROOF  
INSTITUTE





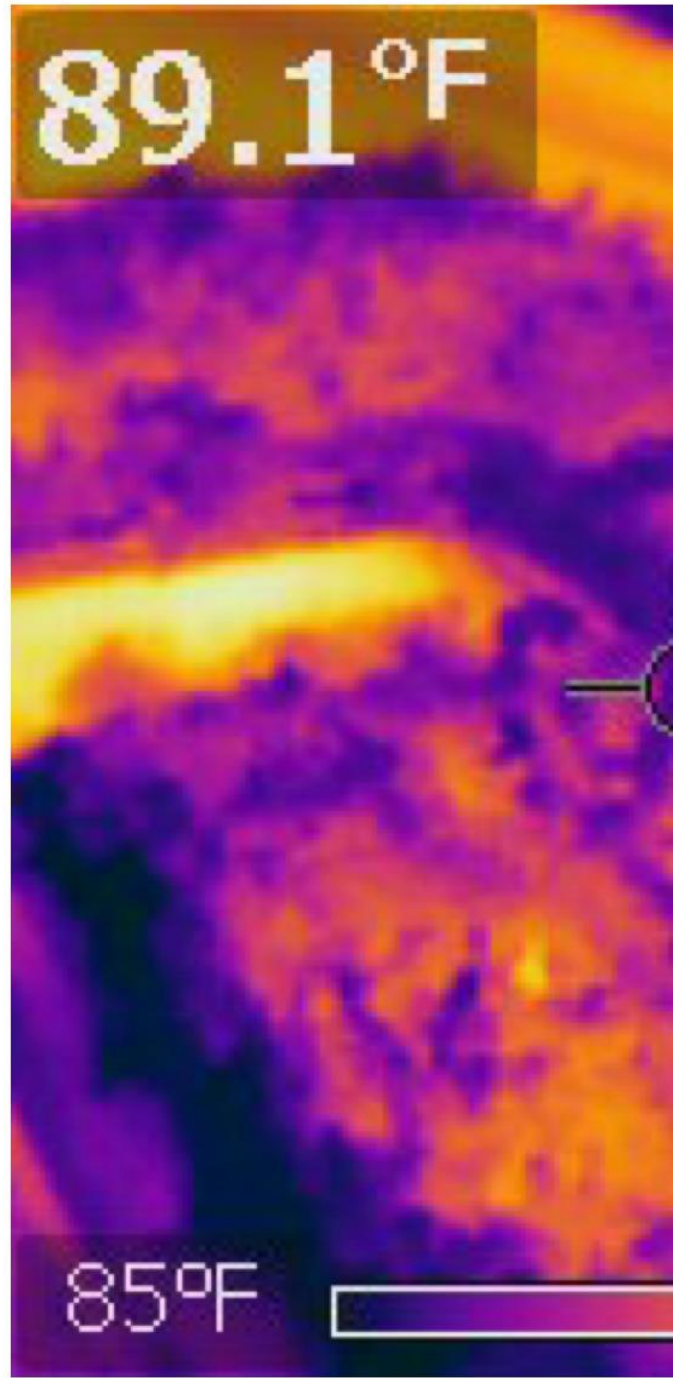
# The Need

There is a deficit in the landscape industry of well-trained GI professionals and many of the companies currently contracted to do this type of work are following installation instructions and specifications without a true understanding of how these systems truly work and why they are now being standardized by various governmental agencies. There are few resources available for GI-specific training and the Living Roof Bus Shelter installation project will help bring awareness and hands-on training to this relatively new trade.

# Training & Maintenance: Crop in a Hard Place

The Living Roof Bus Shelter Initiative can be used as a training tool for many types of groups. Beginning with youth, skill-building training can be expanded to veterans, existing landscape professionals, Department of Public Works and similar groups, and more. Full-day training sessions will not only cover “hard” skills like installing and maintaining living roofs, but also things like environmental and economic impacts living roofs have on cities, how to calculate water retention and carbon sequestration, and more. Crop In A Hard Place, the group trained by Land Escapes, will be responsible for the ongoing seasonal maintenance such as weeding, supplemental watering (if needed), system checks, information gathering, and reporting to track the progress of the roofs and the Initiative as a model.











LAND



ESCAPES

Trevor Smith, MCH, AOLCP, LEED GA  
617-308-7063  
trevscape@comcast.net  
[www.everydaygetaway.com](http://www.everydaygetaway.com)