

HMFH ARCHITECTS

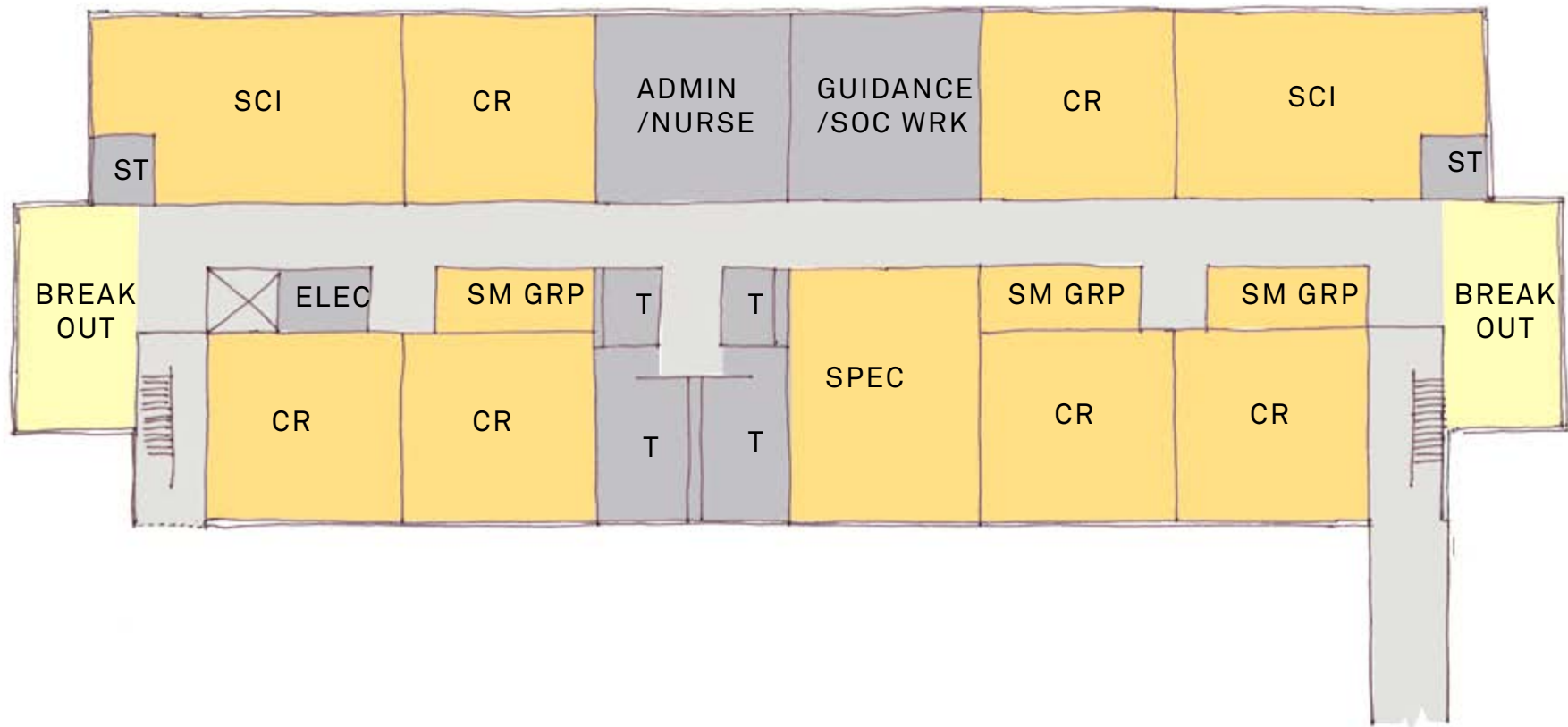
**PROGRESS UPDATE FOR
OTTOSON MIDDLE SCHOOL STUDY FOR ADDITIONS
GIBBS STUDY FOR RENOVATIONS**

ARLINGTON, MASSACHUSETTS

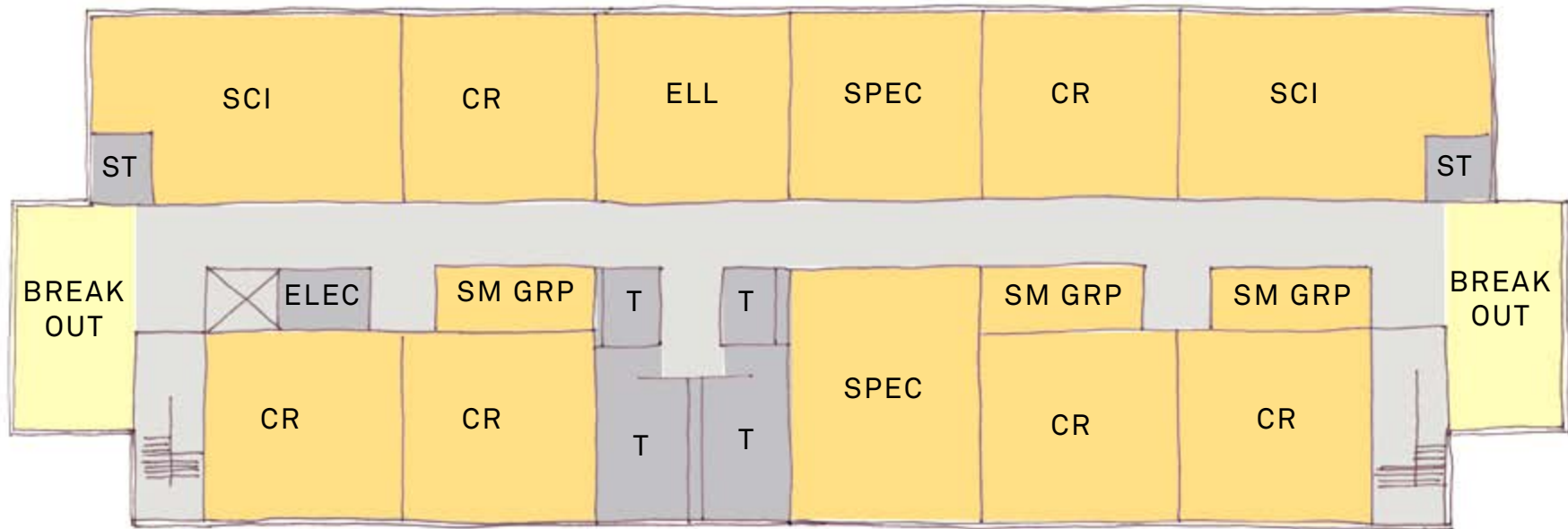
Lori Cowles, AIA Principal

March 29, 2016

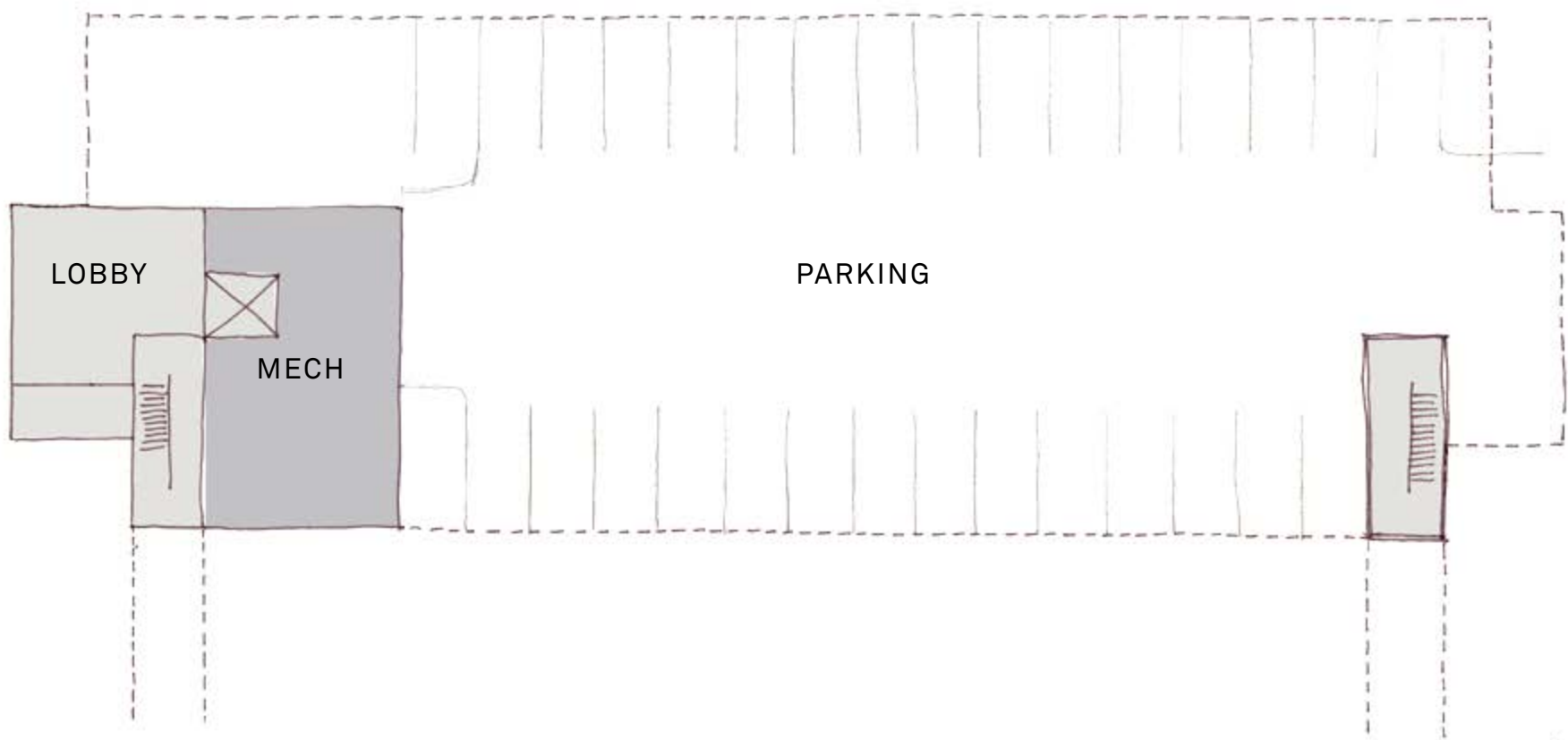
OTTOSON SCHOOL
OPTION 1 & 2
FIRST FLOOR



OTTOSON SCHOOL
OPTION 1 & 2
SECOND FLOOR

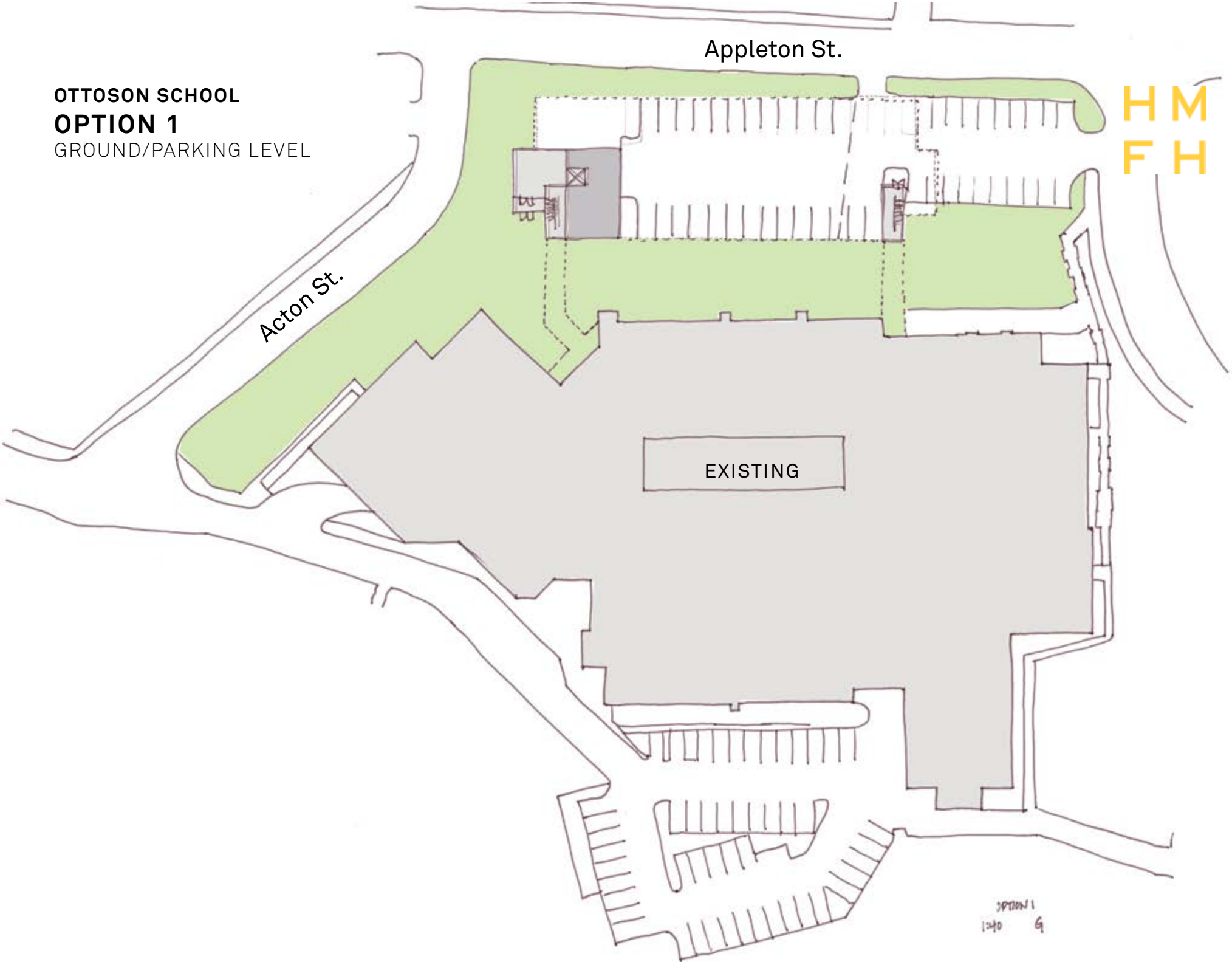


OTTOSON SCHOOL
OPTION 1 & 2
PARKING LEVEL



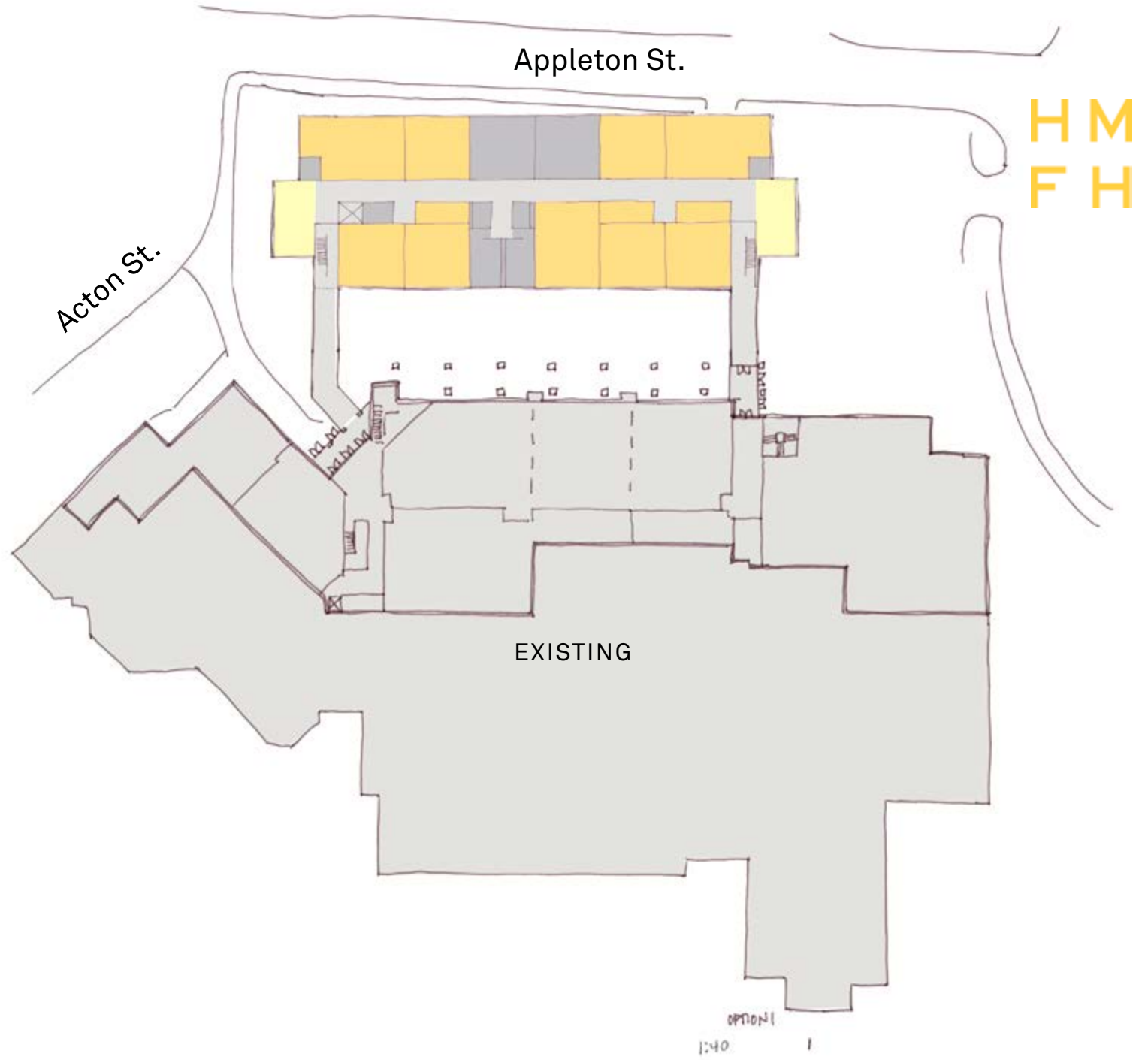
OTTOSON SCHOOL
OPTION 1
GROUND/PARKING LEVEL

HM
FH

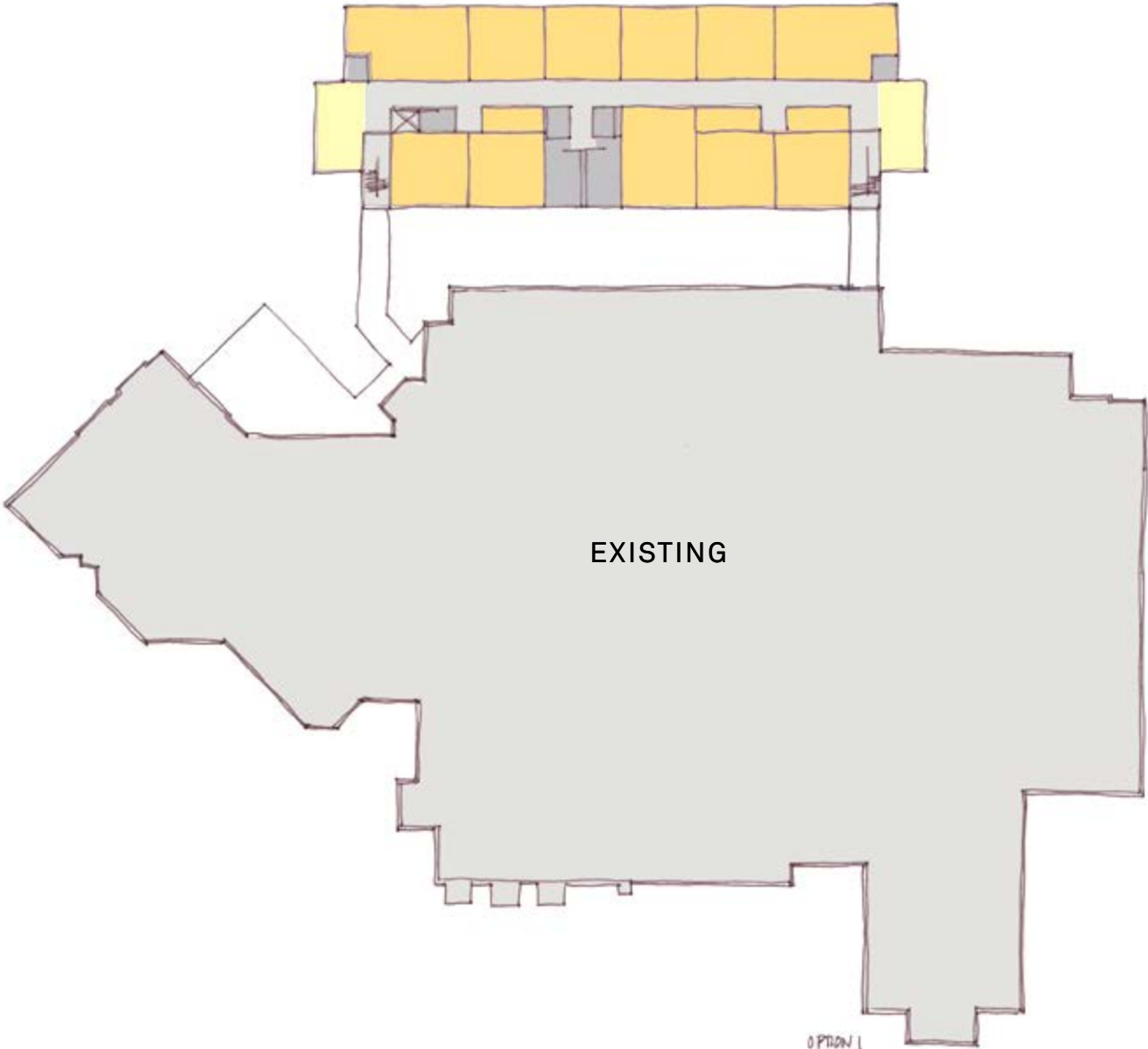


OPTION 1
1:20 G

OTTOSON SCHOOL
OPTION 1
FIRST FLOOR



OTTOSON SCHOOL
OPTION 1
SECOND FLOOR



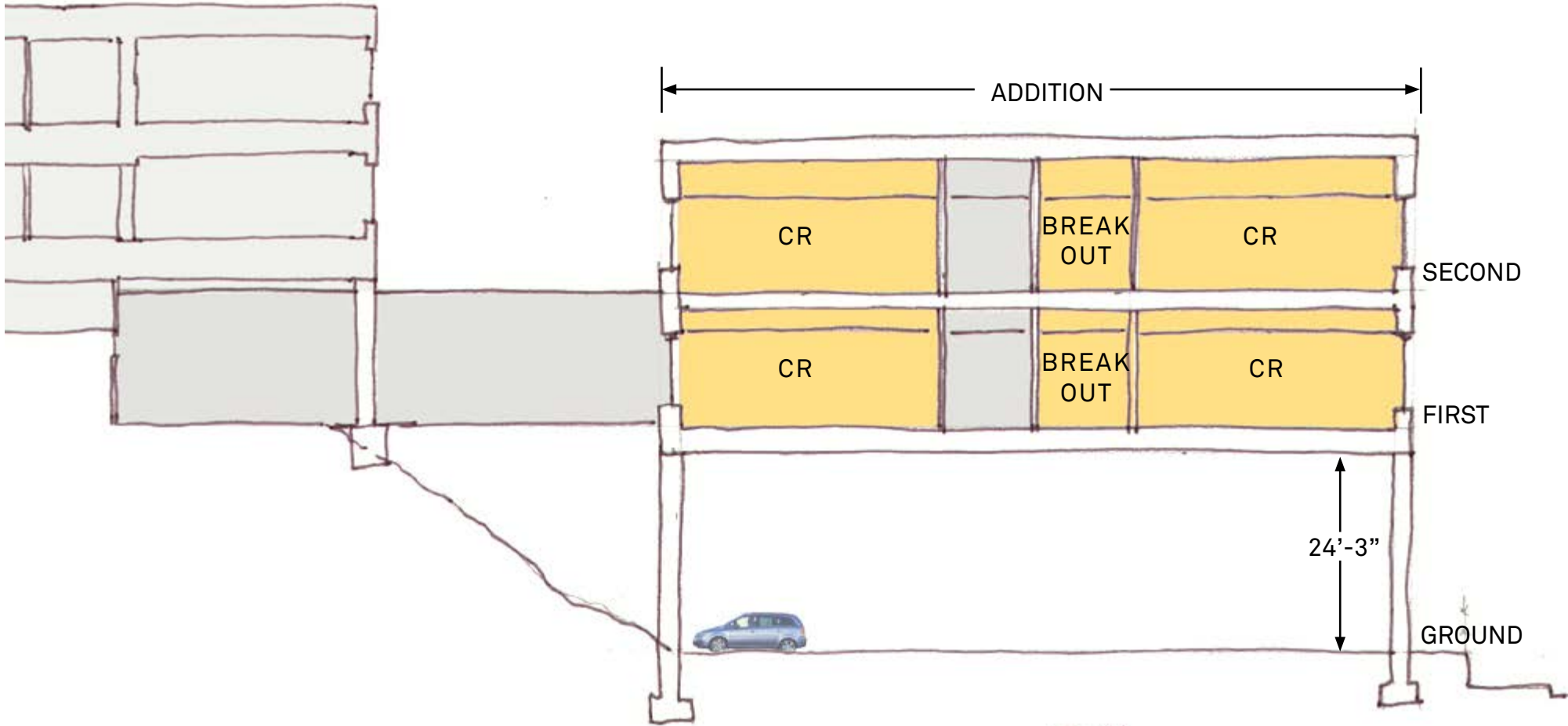
EXISTING

OPTION 1
1:40 2

OTTOSON SCHOOL
OPTION 1
SECTION



EXISTING



ADDITION

CR

BREAK
OUT

CR

SECOND

CR

BREAK
OUT

CR

FIRST

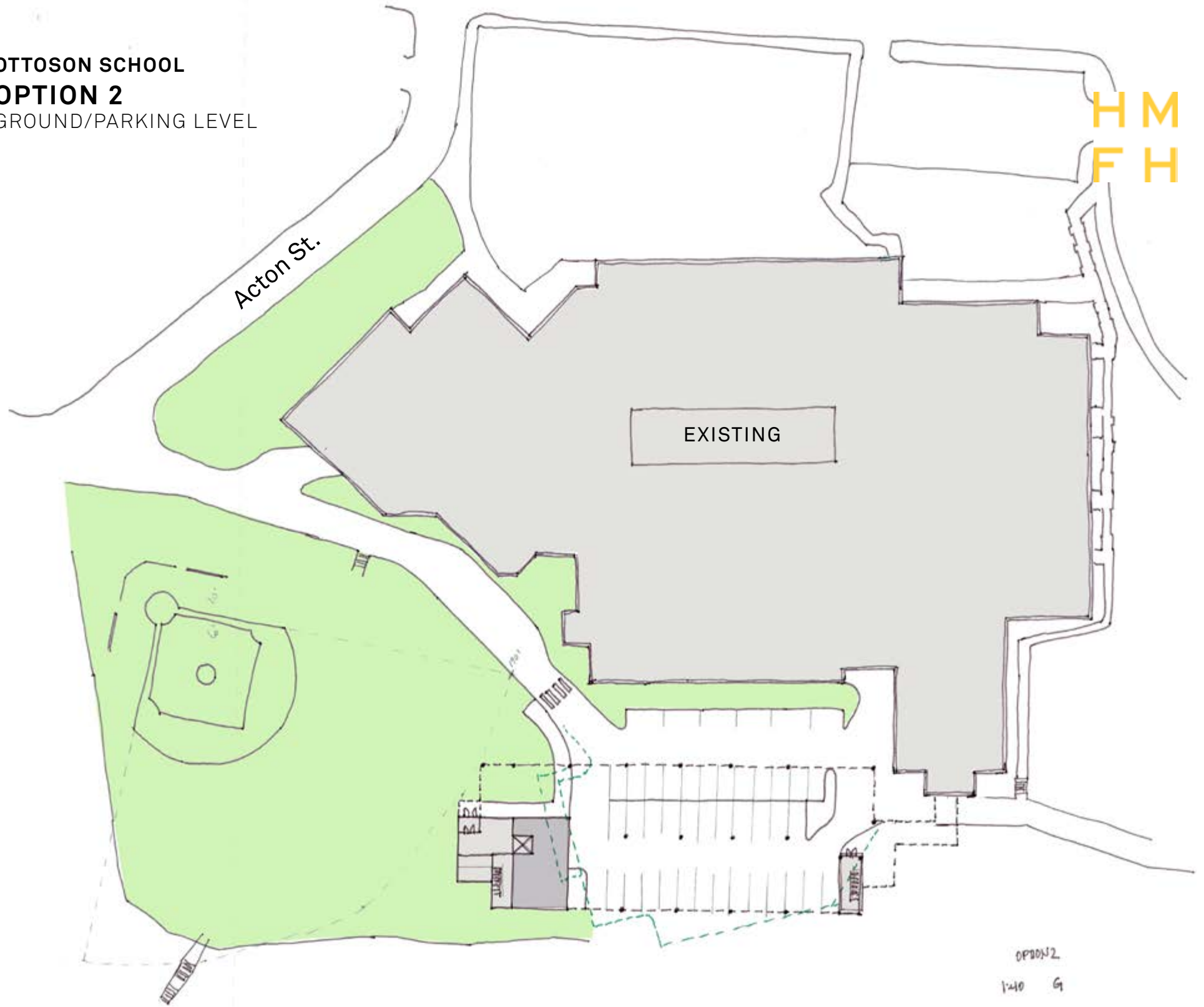
24'-3"

GROUND

OPTION 1
SECTION
1/16" = 1'-0"

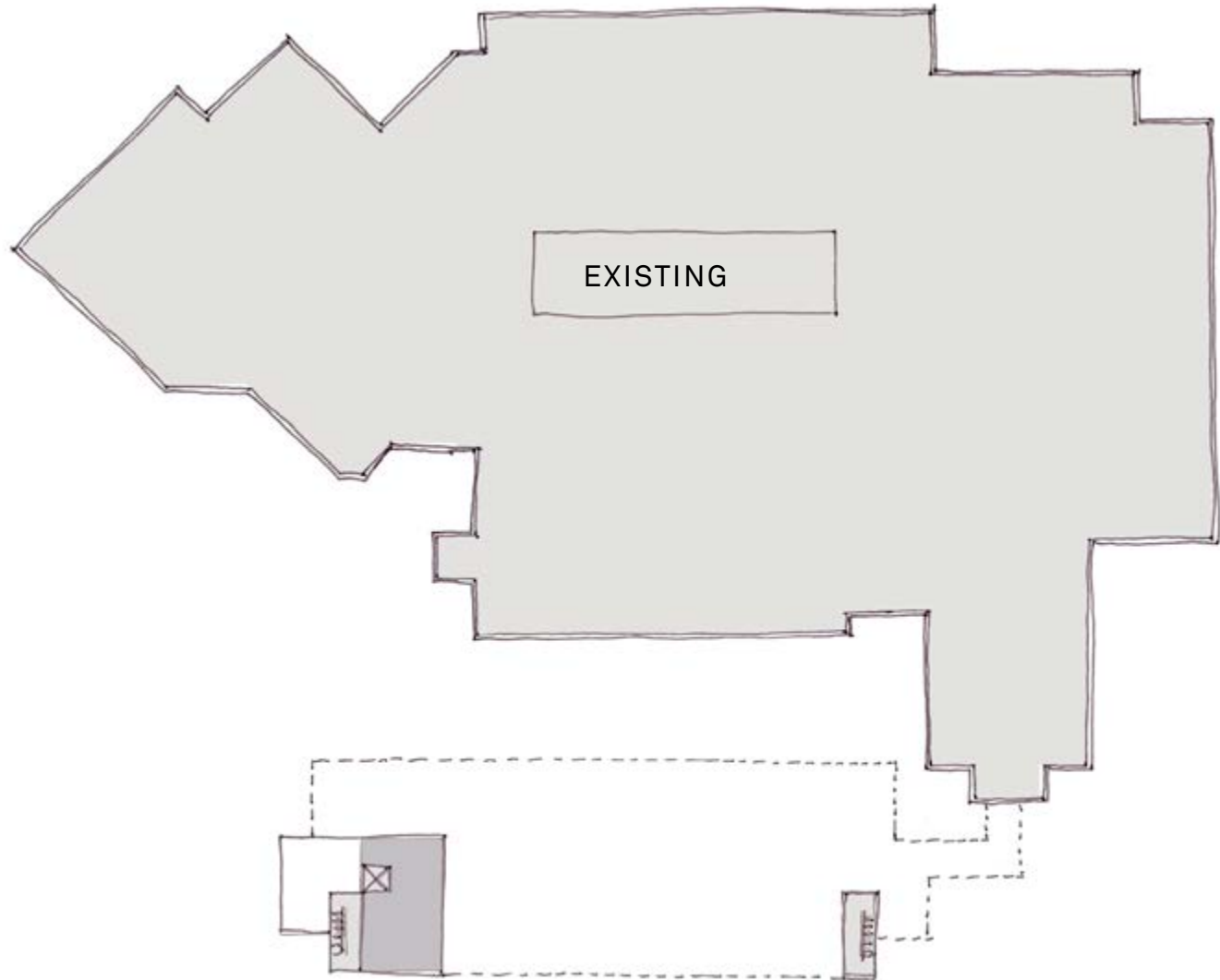
OTTOSON SCHOOL
OPTION 2
GROUND/PARKING LEVEL

HM
FH



OPTION 2
1-40 9

OTTOSON SCHOOL
OPTION 2
UPPER GROUND LEVEL



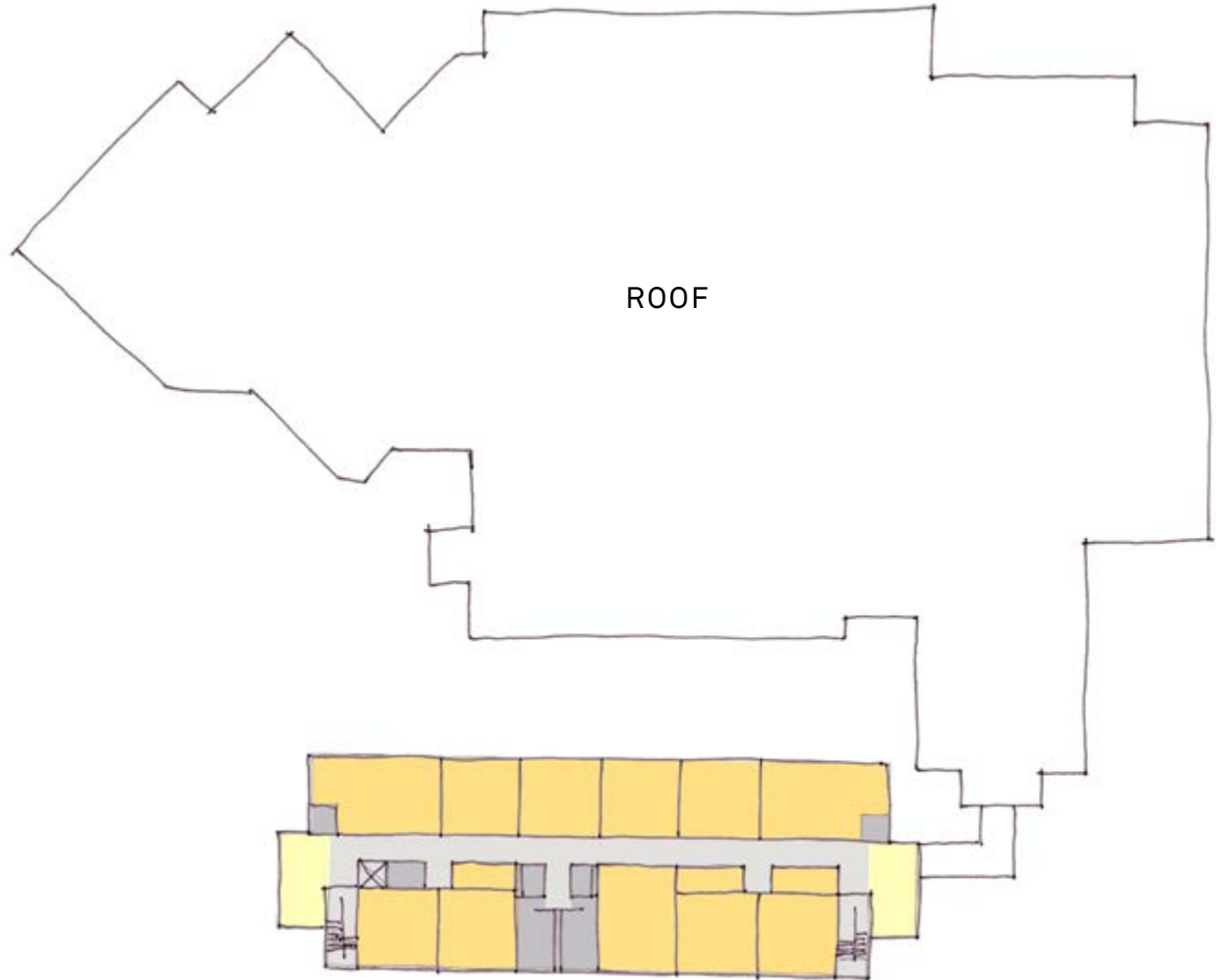
option 2
1:40 Upper G

OTTOSON SCHOOL
OPTION 2
FIRST FLOOR



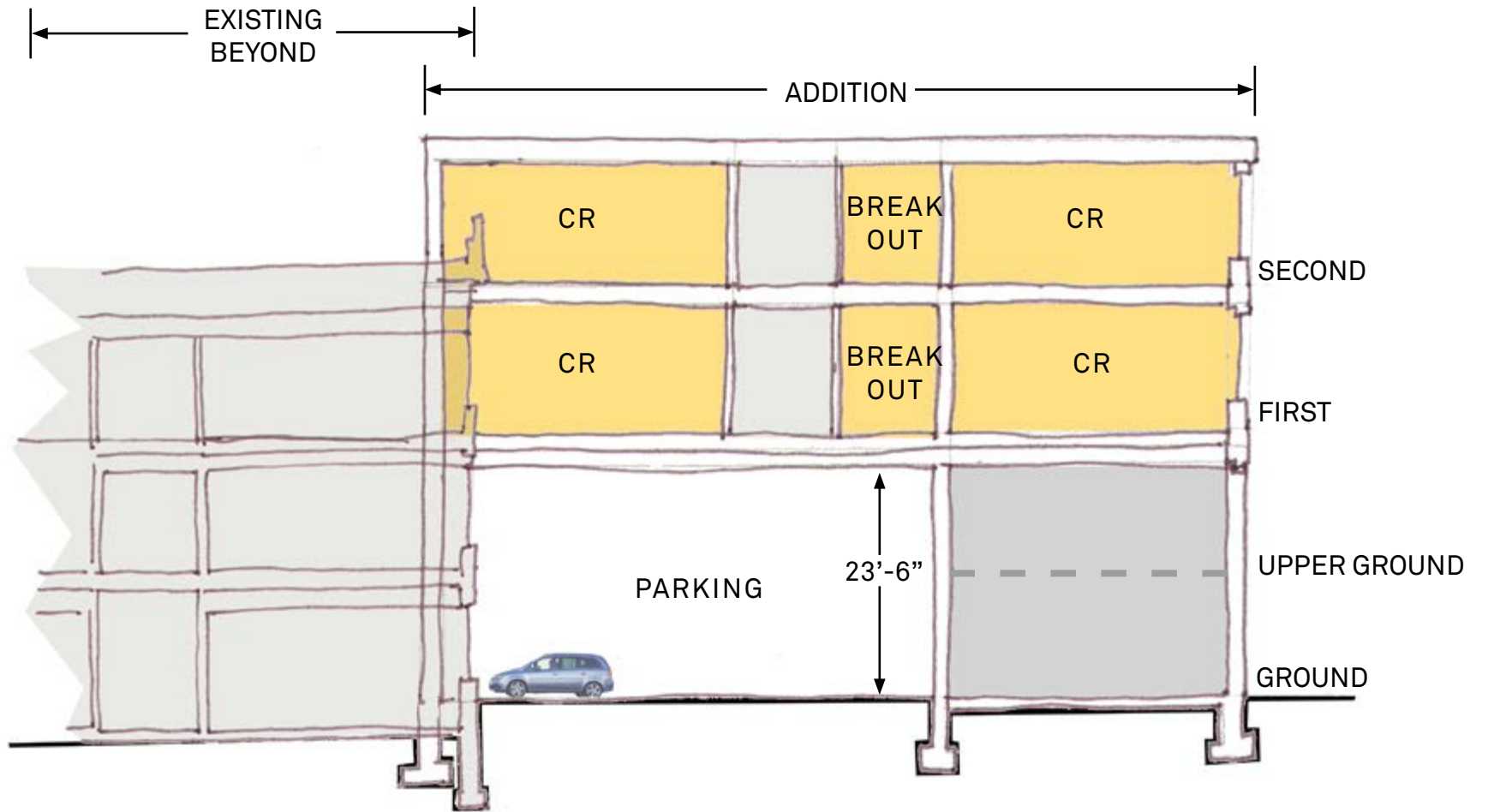
OPTION 2

OTTOSON SCHOOL
OPTION 2
SECOND FLOOR



OPTION 2
140 2

OTTOSON SCHOOL
OPTION 2
SECTION

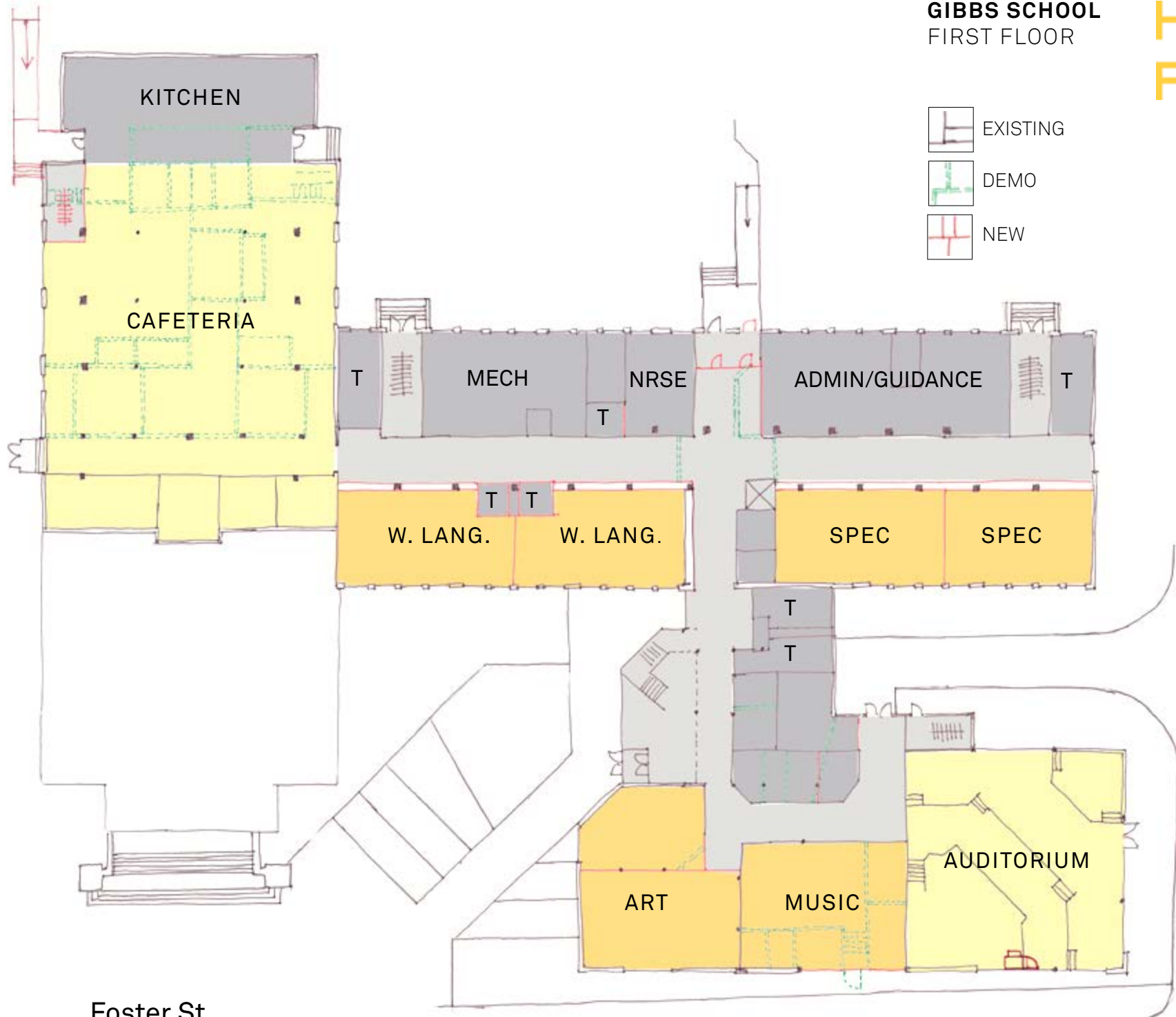


OPTION 2
SECTION
1/8" = 1'-0"

GIBBS SCHOOL
FIRST FLOOR




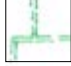

- EXISTING
- DEMO
- NEW

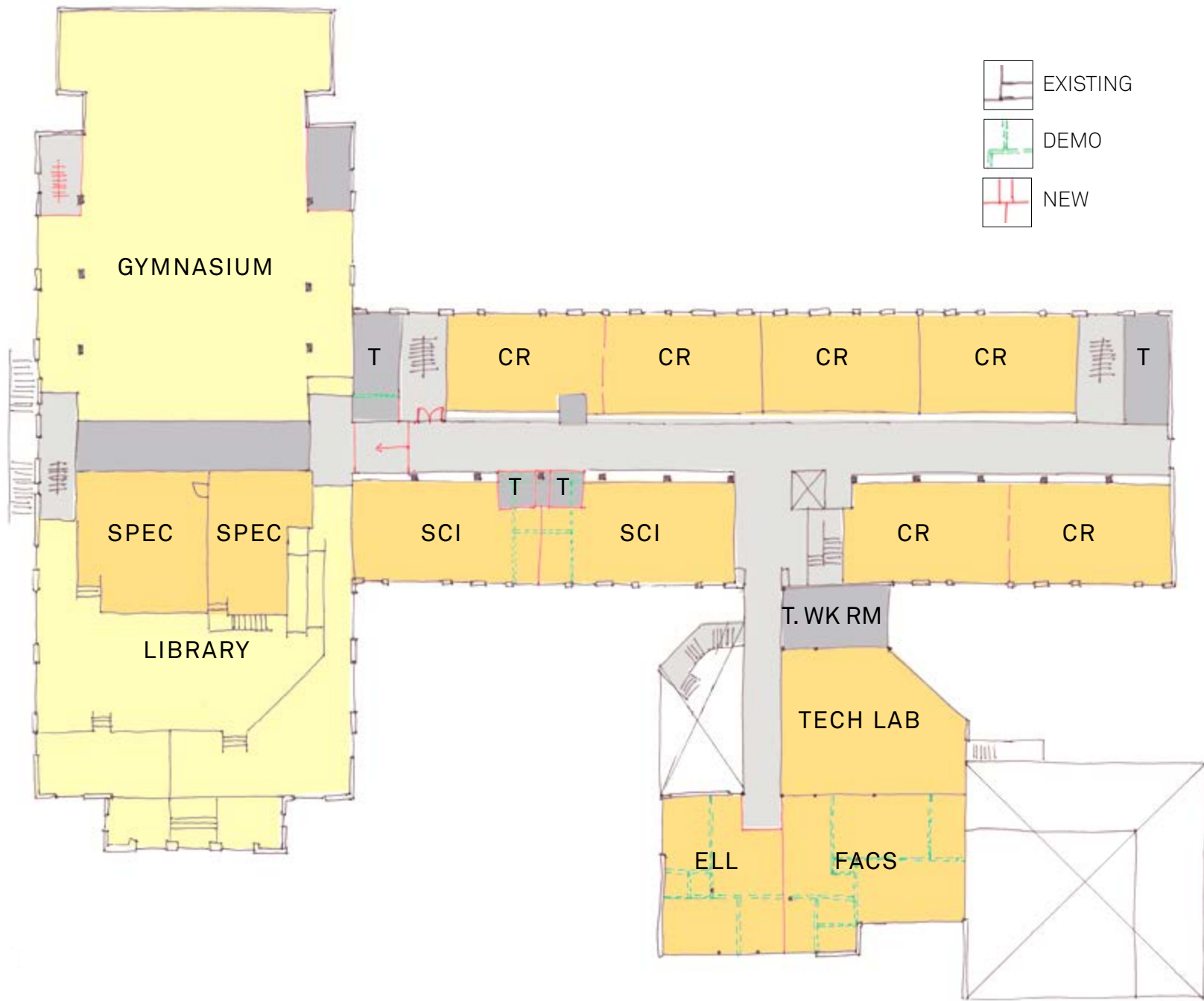


Foster St.

GIBBS SCHOOL
SECOND FLOOR






-  EXISTING
-  DEMO
-  NEW



GIBBS SCHOOL
THIRD FLOOR



-  EXISTING
-  DEMO
-  NEW

