



OFFICE OF THE PURCHASING AGENT

TOWN OF ARLINGTON  
730 Massachusetts Avenue  
Arlington, MA 02476

Telephone (781) 316-3003  
Fax (781) 316-3019

DATE: May 19, 2016

TO ALL BIDDERS

BID NO. 16-11

SUBJECT: Lease of Space/Central School

**ADDENDUM NO. 2**

TO WHOM IT MAY CONCERN:

With reference to the bid request relative to the above subject, please note the following:

**SEE ATTACHED**

**BIDDER MUST ACKNOWLEDGE ADDENDUM WITH SUBMISSION**

All other terms, conditions and specifications remain unchanged.

Very truly yours,

Town of Arlington

Domenic R. Lanzillotti  
Purchasing Officer



## ARLINGTON REDEVELOPMENT BOARD

TOWN HALL ARLINGTON, MASSACHUSETTS 02476

TELEPHONE 781-316-3090

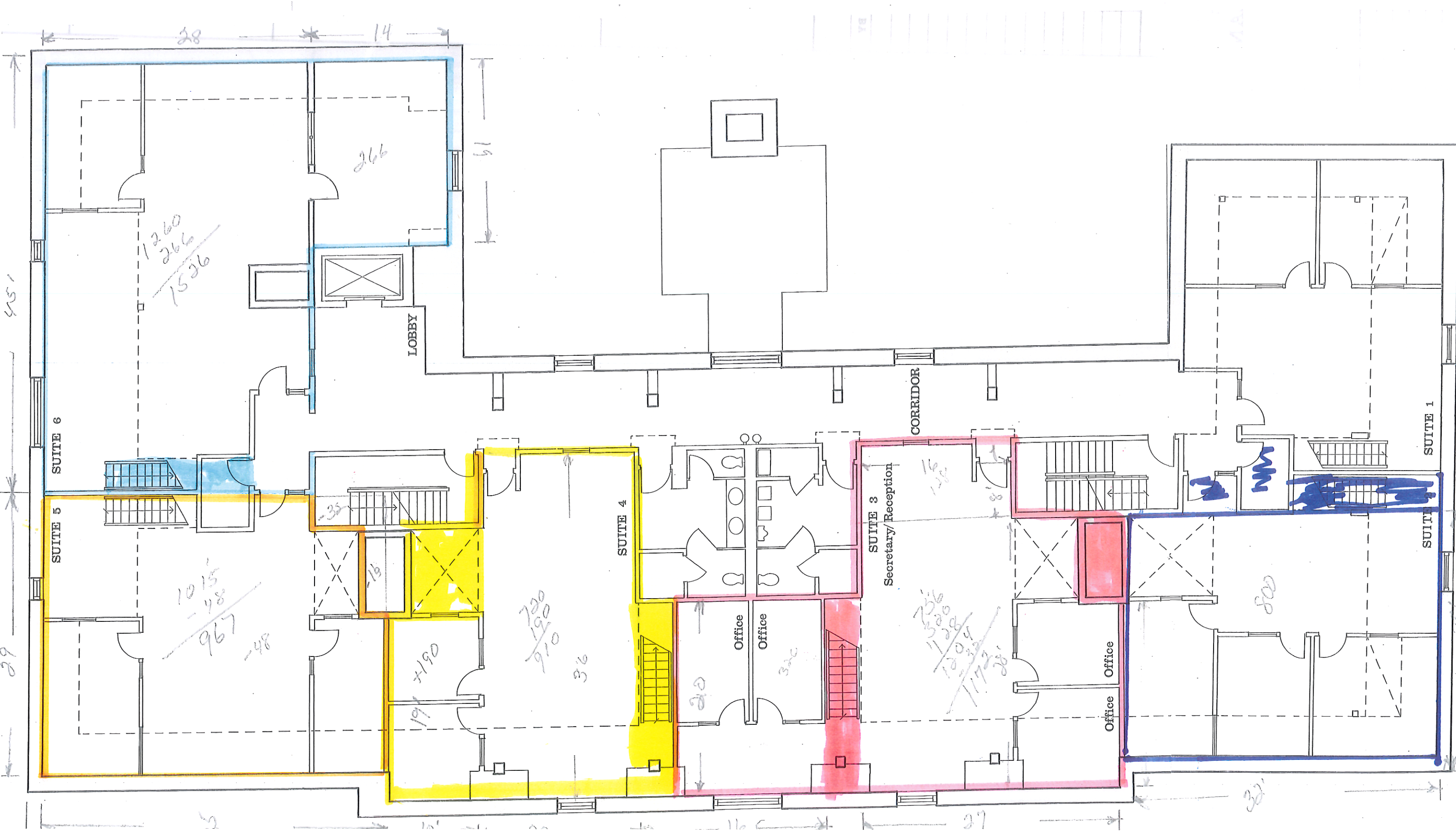
Re: Lease of Space/ Central School Building, RFP 16-11

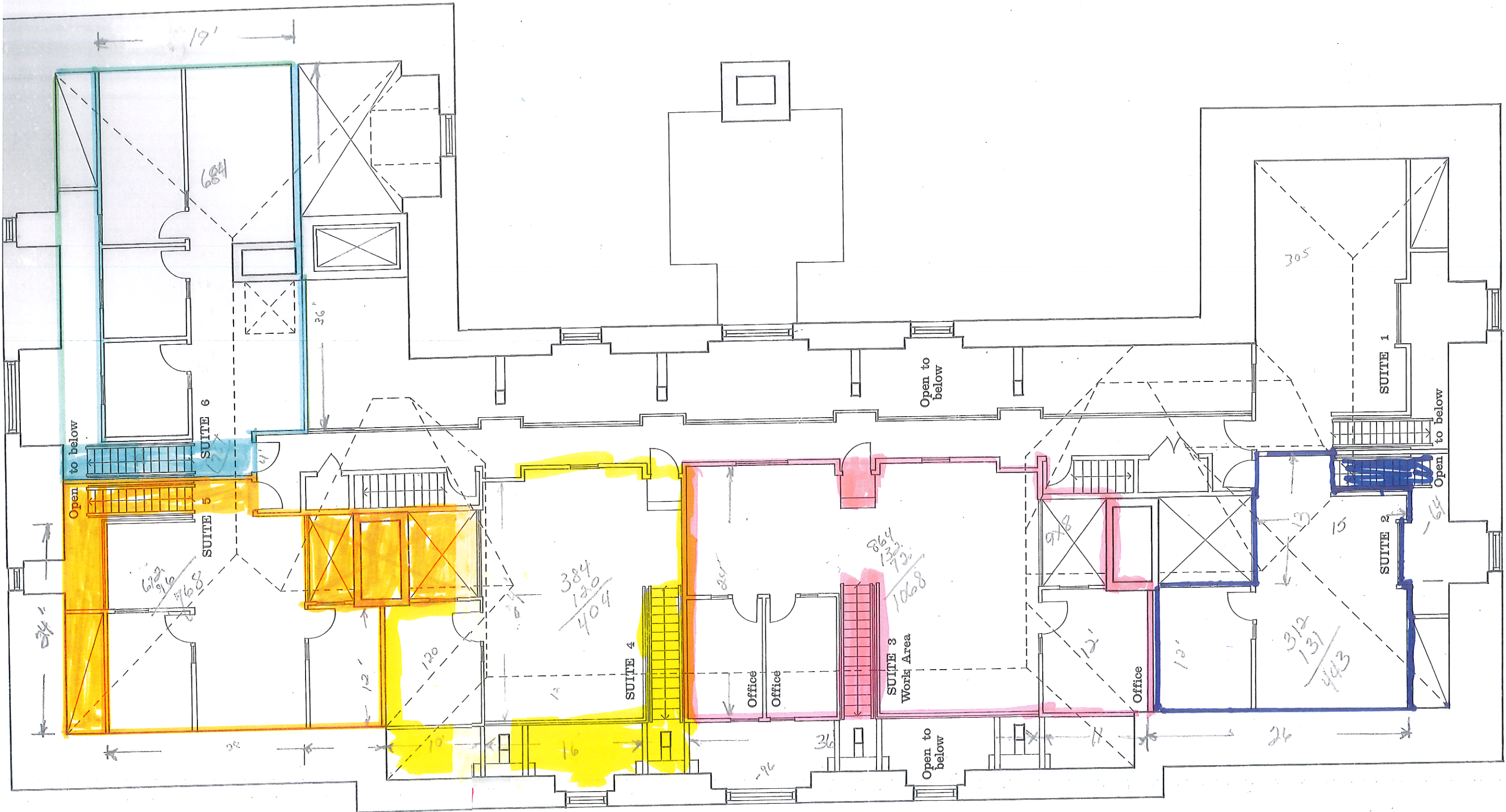
To whom this may concern:

A prospective bidder requested clarification of the square footage for the 3<sup>rd</sup> and 4<sup>th</sup> floor spaces listed in the RFP noted above. Upon further investigation, there are discrepancies with the actual versus reported amount of square footage of the space as listed in the RFP on page 2. The RFP lists that the 3<sup>rd</sup> floor has 4,071 square feet and the 4<sup>th</sup> floor has 4,516 square feet of rentable space respectively. The Town's Building Craftsmen provided new measurements of the space based upon how it is being used by the current tenants. Those new square footage amounts are noted on the plans and chart. The Town requests that respondents use the following amounts in their proposals: the 3<sup>rd</sup> floor has approximately 5,375 square feet and the 4<sup>th</sup> floor has approximately 3,367 square feet of rentable space.

Submitted by:  
Jennifer M. Raitt  
Secretary ex officio

	Suites	3rd Floor	4th Floor	Total SqFt
	1	Mystic River	0	0
Dark Blue	2	DDS	800	
Dark Blue	2	DMH	443	
Pink	3	DMH	1172	
Pink	3	DMH	1068	
Yellow	4	DMH	910	
Yellow	4	DMH	404	
Orange	5	DDS	967	
Orange	5	DDS	768	
Light Blue	6	DDS	1526	
Light Blue	6	DDS	684	
	<b>Total</b>		5375	8742
		RFP #s	4071	8587
			4516	





684

SUITE 6

SUITE 5

SUITE 4

SUITE 4

SUITE 3  
Work Area

SUITE 1

SUITE 2

19'

36"

Open to below

Open to below

Open to below

Office

Office

Office

305

312

131

443

864

132

72

1068

384

120

404

24'

22'

12'

120'

12'

384

120

404

36'

Open to below

26'

15'

13'

64'

12'

10'

