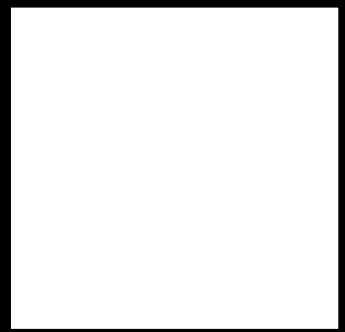


# BUILDING ENVELOPE MASONRY, SEALANTS, AND MISC. REPAIRS

ARLINGTON-HARDY ELEMENTARY SCHOOL  
 52 LAKE STREET, ARLINGTON, MA



30 BRIARCLIFF DRIVE, HOPKINTON MA, 01748  
 (781)-718-8950



PREPARED BY:  
 KAZIMIR CUNNINGHAM

Elements Management  
 30 BRIARCLIFF DRIVE  
 HOPKINTON MA, 01748

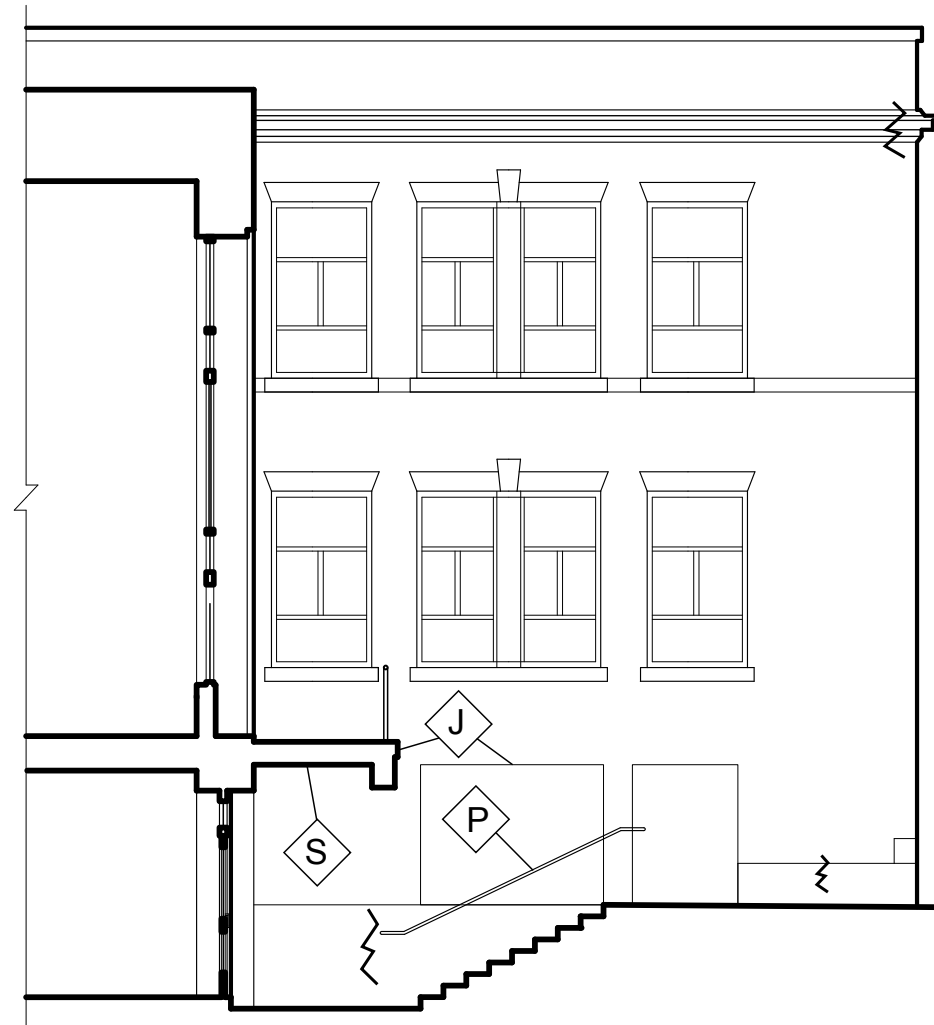
NO.	REVISIONS	DATE

**COVER SHEET**  
 ARLINGTON-HARDY ELEMENTARY SCHOOL  
 52 LAKE STREET, ARLINGTON, MA.

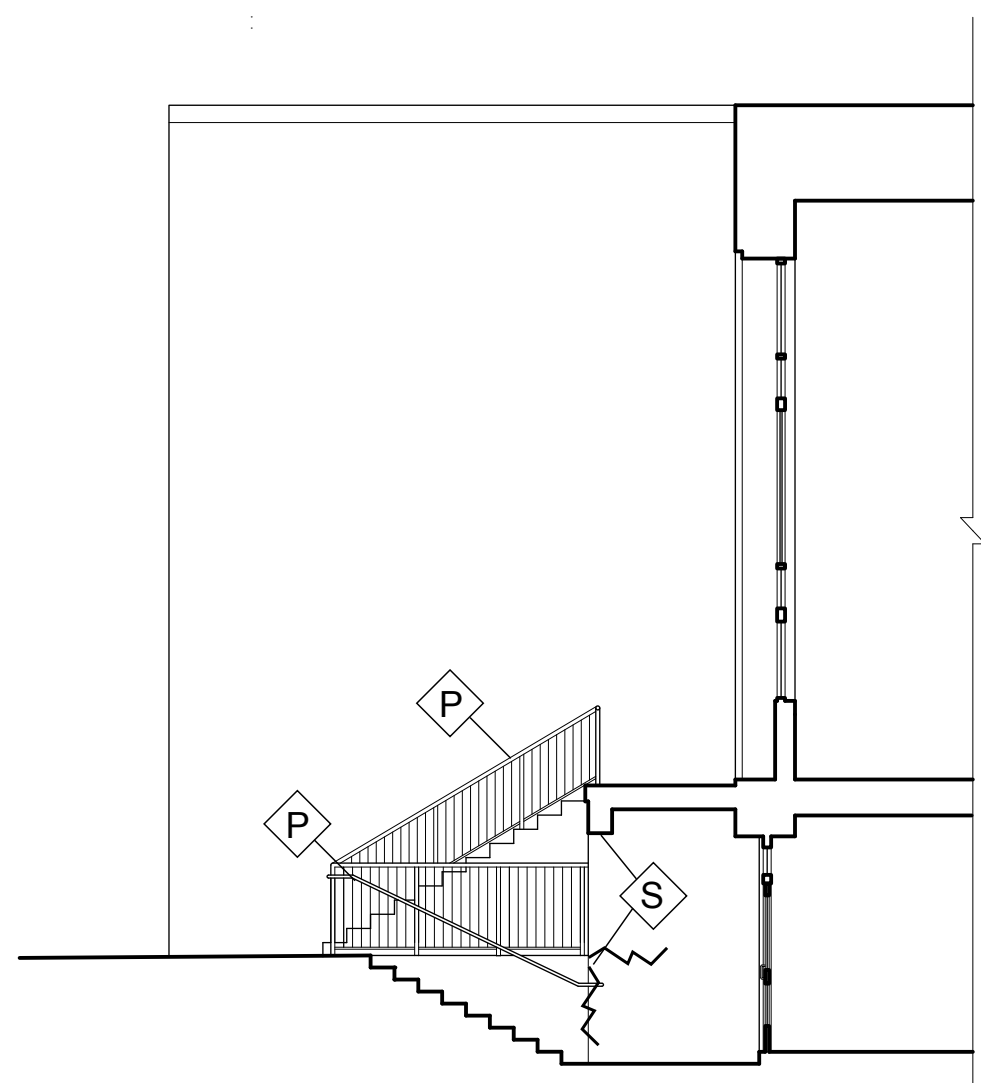
DATE 05/20/16  
 SCALE N/A  
 JOB NO.  
 SHEET  
**A-0**



ELEVATION A. (LAKE STREET)



ELEVATION B.



ELEVATION C.



ELEVATION D.

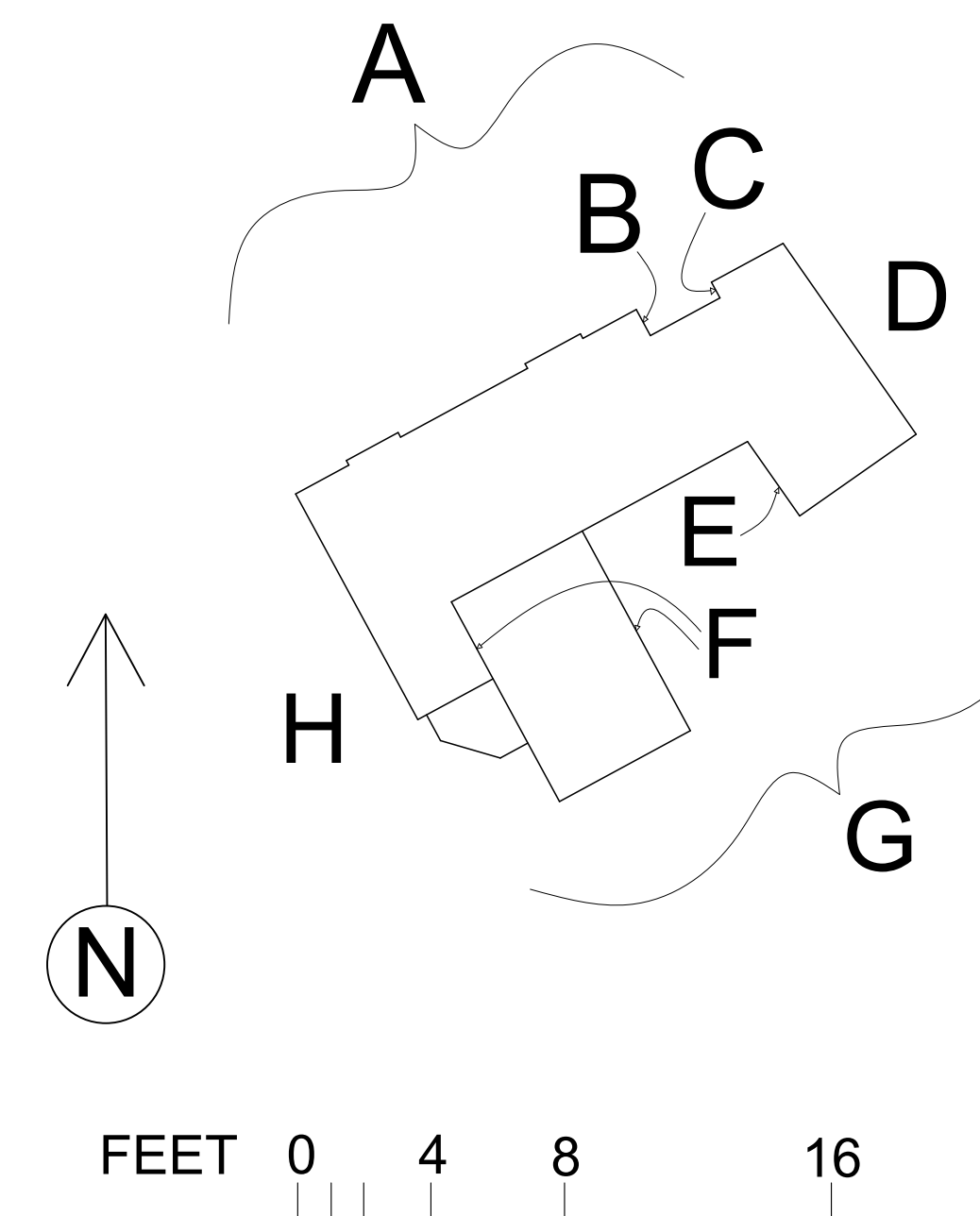
**LEGEND**

- SEAL/REPAIR CRACK.
- 1. CAST BELT COURSES & SILLS: CUT AND SEAL WITH MIMICK.
- 2. FOUNDATION: APPLY SEALANT WITH SAND BROADCAST MIMICK.
- 3. BRICK: REPLACE BRICK.
- PATCH SPALLING HOLES/BREAKS IN MASONRY WITH MIMICK.
- SCRAPE SCALING PAINT; WIRE-BRUSH SURFACE (RUST PROOF); PRIME & PAINT (DOOR/FRAME, RAILING, OR SOFFIT, AS SHOWN).
- REMOVE OLD SEALANT & APPLY NEW SEALANT TO JOINTS/HOLES.
- REPOINT BRICK OR MASONRY BLOCK.
- REPLACE WINDOW LITE.
- REBUILD MASONRY SILL.
- METAL REBUILD/RUST REPAIR: SEE SPECIFICATIONS.
- DOOR NUMBER.

NOTE: REFER TO SPECIFICATIONS FOR MORE INFORMATION.



ELEVATION H. (BROOKS AVE)



PREPARED BY:  
KAZIMIR CUNNINGHAM

Elements Management  
30 BRIARCLIFF DRIVE  
HOPKINTON MA, 01748

NO.	REVISIONS	DATE

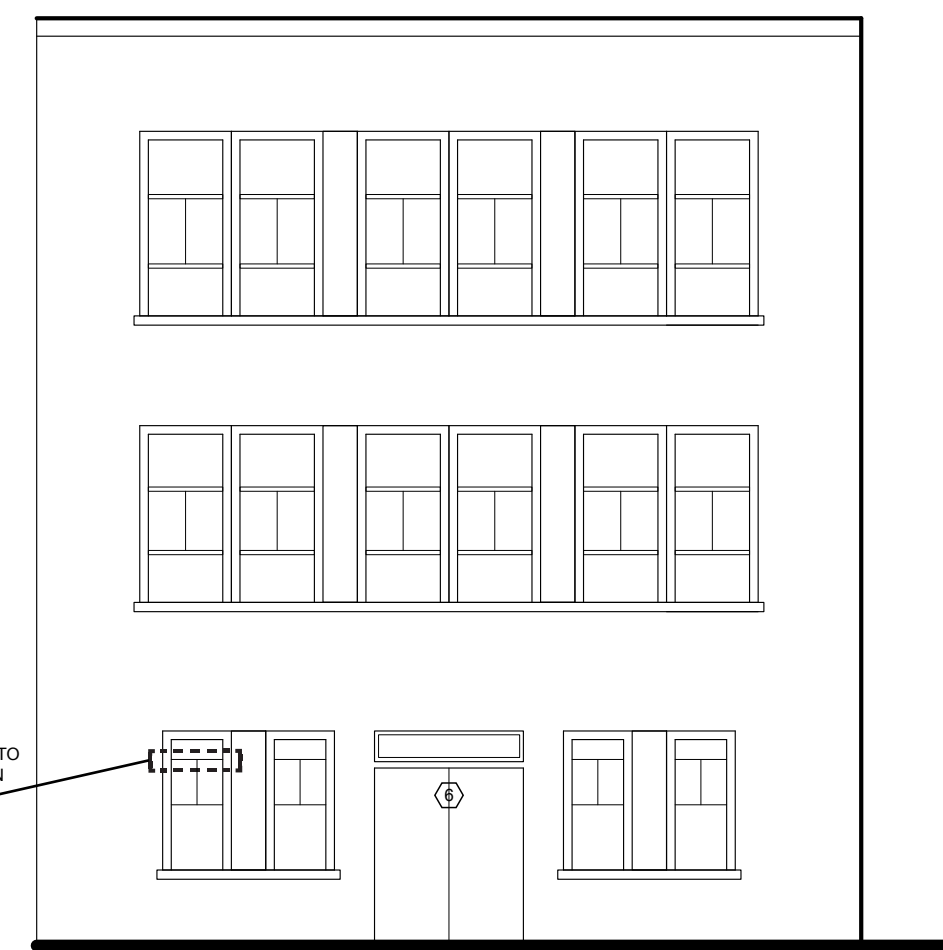
NO.	REVISIONS	DATE

**ELEVATIONS 1**  
ARLINGTON-HARDY ELEMENTARY SCHOOL  
52 LAKE STREET, ARLINGTON, MA.

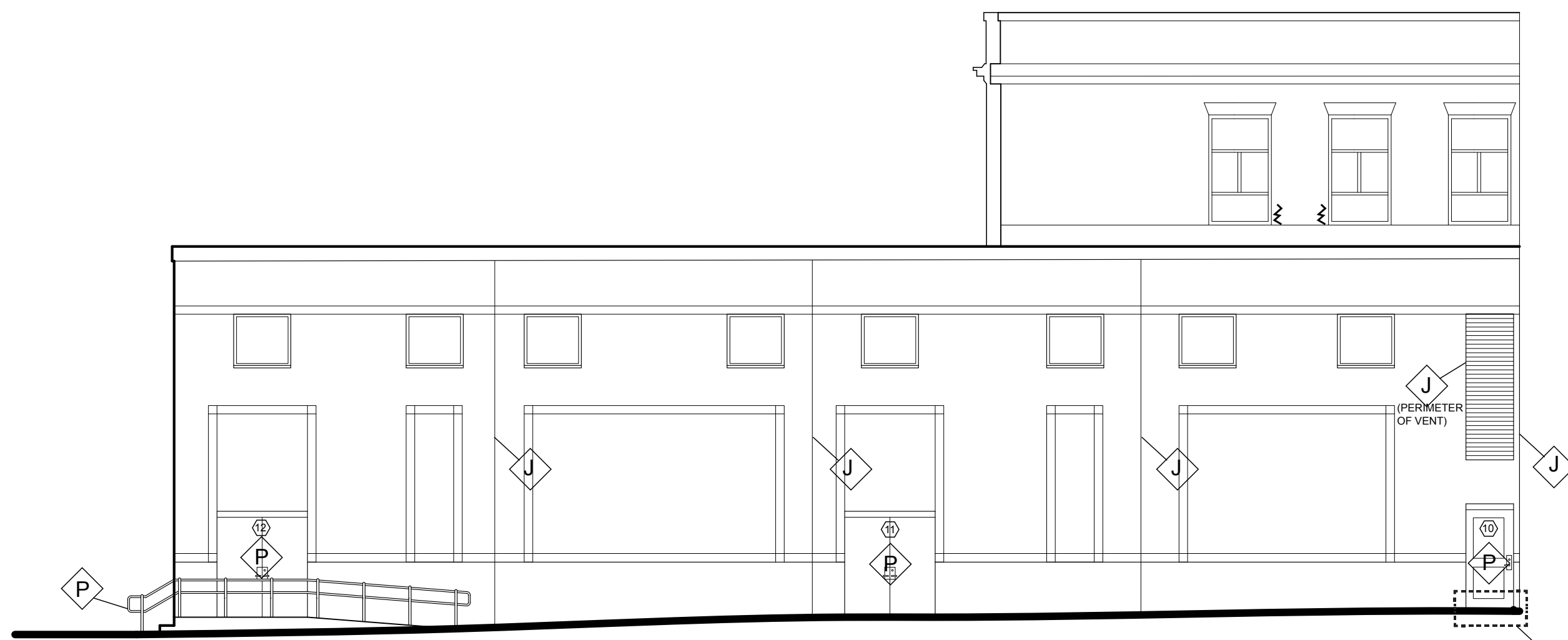
DATE 05/20/16  
SCALE 1/8"=1'-0"  
JOB NO.  
SHEET  
**A-1**



ELEVATION G. (CHANDLER ST)

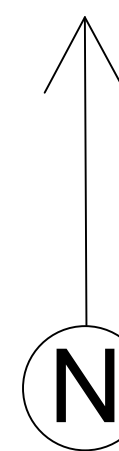
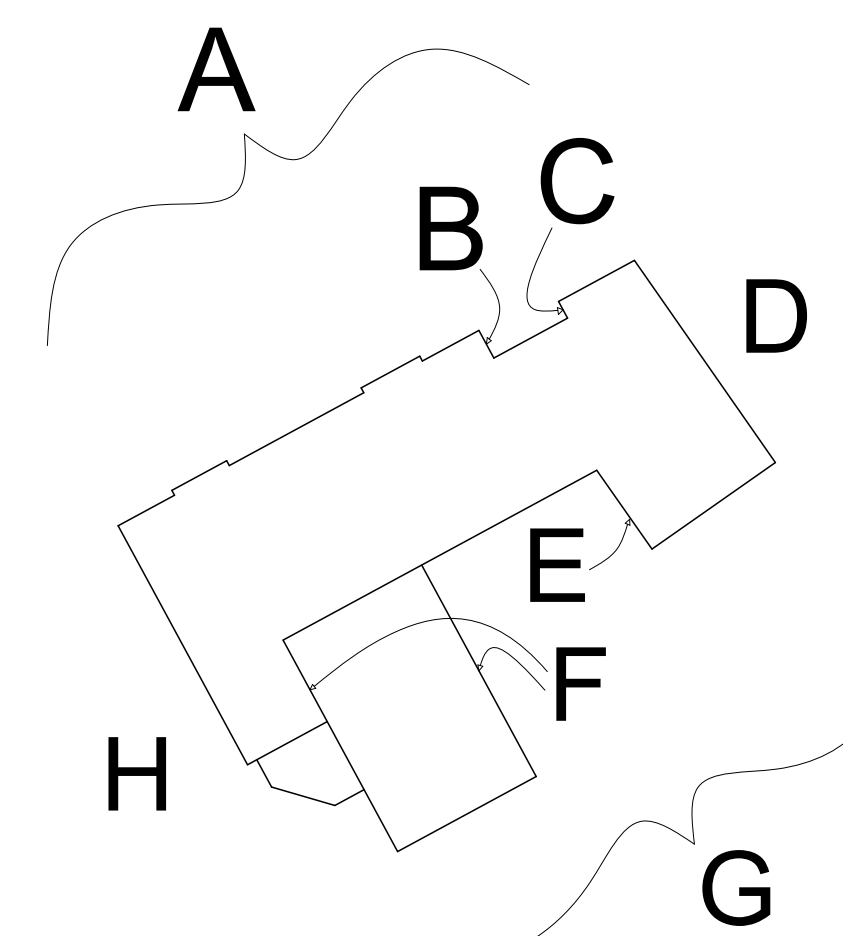


ELEVATION E.



ELEVATION F.

LEGEND	
	SEAL/REPAIR CRACK: 1. CAST BELT COURSES & SILLS: CUT AND SEAL WITH MIMICK
	2. FOUNDATION: APPLY SEALANT WITH SAND BROADCAST MIMICK
	3. BRICK: REPLACE BRICK
	PATCH SPALLING/HOLES/BREAKS IN MASONRY WITH MIMICK
	SCRAPE SCALING PAINT/ WIRE-BRUSH SURFACE RUST (RUST-PROOF) PRIME & PAINT DOOR/FRAME, RAILING, OR SOFFIT, AS SHOWN.
	REMOVE OLD SEALANT & APPLY NEW SEALANT TO JOINTS/HOLES.
	REPOINT BRICK OR MASONRY BLOCK
	REPLACE WINDOW LITE
	REBUILD MASONRY SILL
	METAL REBUILD/RUST REPAIR: SEE SPECIFICATIONS.
	DOOR NUMBER
NOTE: REFER TO SPECIFICATIONS FOR MORE INFORMATION	



FEET 0 4 8 16

DATE

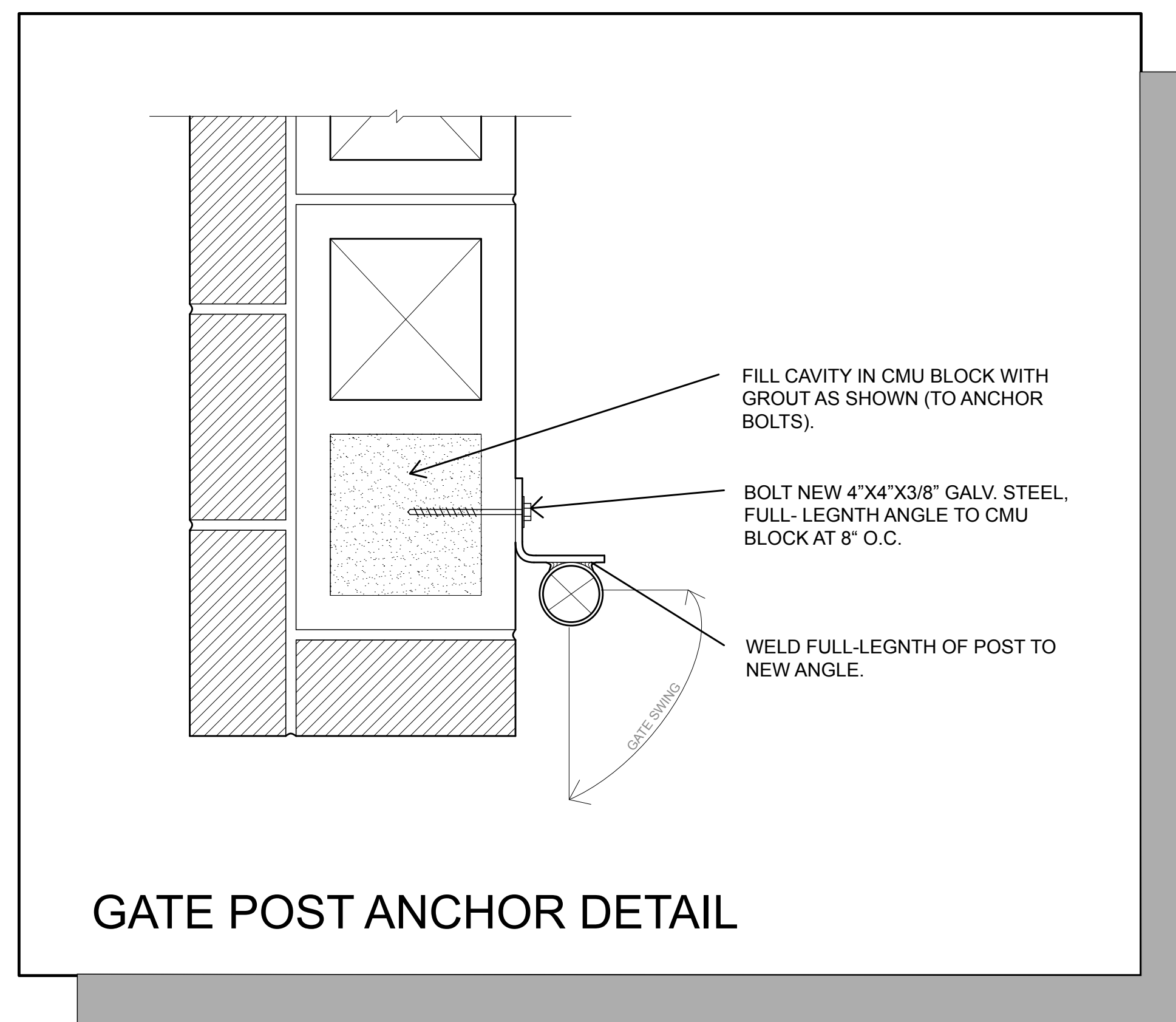
PREPARED BY:  
KAZIMIR CUNNINGHAM

Elements Management  
30 BRIARCLIFF DRIVE  
HOPKINTON MA, 01748

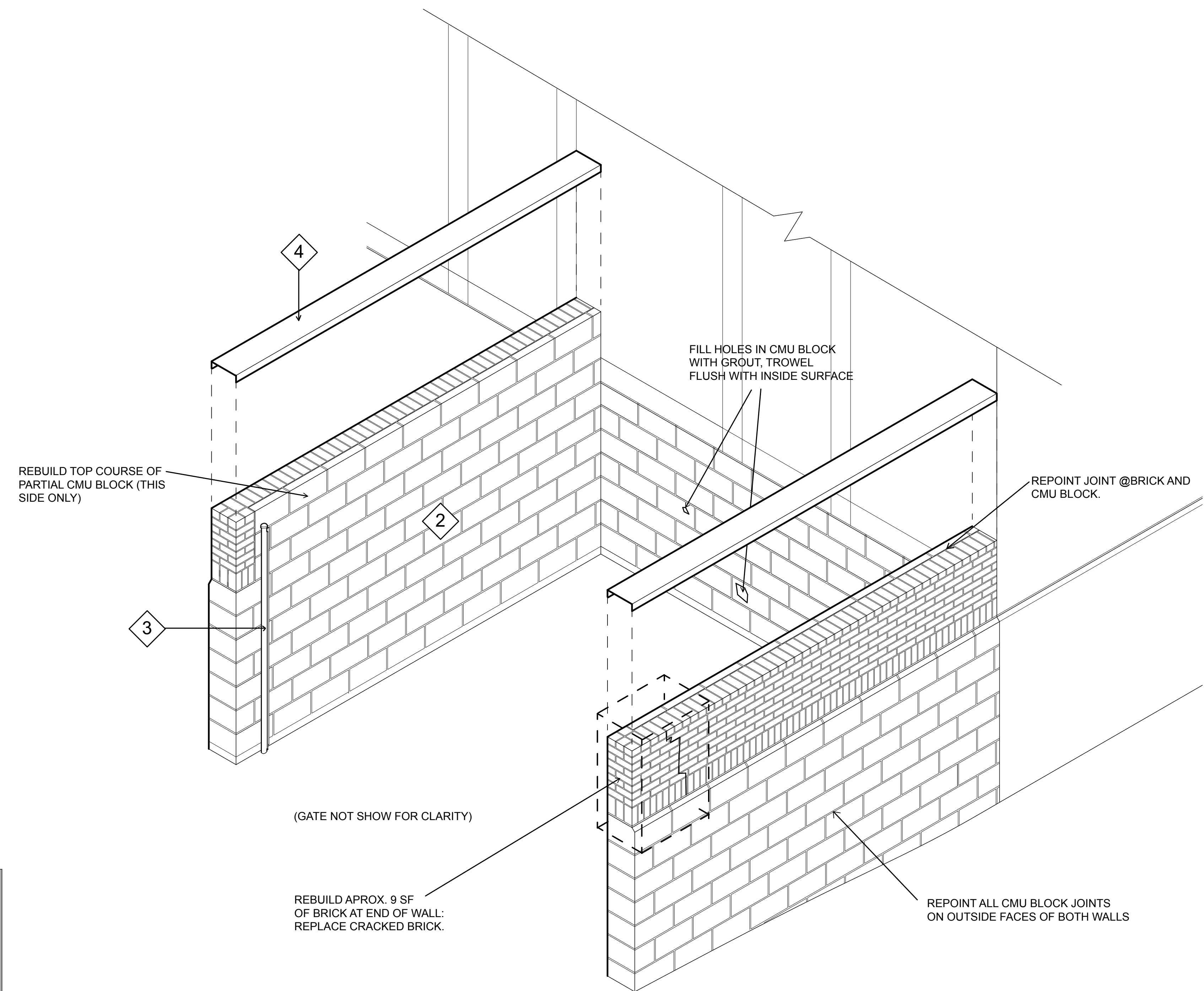
NO.	REVISIONS	DATE

**ELEVATIONS 2**  
ARLINGTON-HARDY ELEMENTARY SCHOOL  
52 LAKE STREET, ARLINGTON, MA.

DATE 05/20/16  
SCALE 1/8"=1'-0"  
JOB NO.  
SHEET  
**A-2**



GATE POST ANCHOR DETAIL



1 DUMPSTER AREA REPAIR DETAIL

- DUMPSTER AREA REPAIR
- 1 REPLACE ALL CRACKED CMU BLOCK AND BRICKS.
  - 2 PARGE INSIDE FACES OF ALL CMU BLOCK WITH FIBER MESH REINFORCED COATING (CONPROCO STRUCTURAL SKIN OR EQUIVALENT). REPAIR MORTAR PRIOR TO COATING.
  - 3 RE-SET TWO GATE POSTS (BOTH SIDES) PLUMB, IN NEW FOOTINGS: REMOVE OLD BRACKETS AND BOLTS. SEE POST ANCHOR DETAIL (LEFT) FOR FURTHER ANCHORING INSTRUCTIONS.
  - 4 INSTALL GALV. STEEL CHANNEL CAP 13"x4"x 3/8" ON FULL LENGTH OF BOTH WALLS AND SET IN FULL BED OF SEALANT. ANCHOR-BOLT TO WALL AT 2' O.C. (PARGE TOP OF WALLS WITH CONPROCO STRUCTURAL SKIN OR EQUIVALENT PRIOR TO CHANNEL INSTALLATION).

DATE

REVISIONS

NO.

NO.	REVISIONS	DATE

**DUMPSTER AREA DETAIL**  
**ARLINGTON-HARDY ELEMENTARY SCHOOL**  
 52 LAKE STREET, ARLINGTON, MA.

DATE 05/20/16  
 SCALE AS NOTED  
 JOB NO.  
 SHEET

A-3

PREPARED BY:  
 KAZIMIR CUNNINGHAM

Elements Management  
 30 BRIARCLIFF DRIVE  
 HOPKINTON MA, 01748