

8/15/16 3:32:03 PM C:\Users\Admin\Documents\Hedlund Design Group\Hedlund Design Group\Hedlund Design Group\15.2-Magnolia Park\CAD\CD PLOTS\L3 Materials.dwg

DESIGN CONSULTANT:
hord | coplan | macht
HORD COPLAN MACHT, INC.
ARCHITECTURE
LANDSCAPE ARCHITECTURE
PLANNING
INTERIOR DESIGN
750 E Pratt Street, Suite 1100
Baltimore, MD 21202
410 837 7311
410 837 6550 fax
www.hcm2.com

dej SITE DESIGN
CIVIL ENGINEERING
LAND PLANNING
DESIGN • ENGINEERING • INNOVATION
14 Spring St, 1st Floor
Waltham, MA 02451
781 850 2731
www.dejeng.com

| No. | Description | Date |
|-----|-----------------------|-----------|
| 3 | CON COM REVISIONS | 8-15-2016 |
| 2 | TREE REMOVAL REVISION | 5-26-2016 |
| 1 | ISSUED FOR BID | 3-28-2016 |

DWG ISSUE & REVISION HISTORY

Stamp

ISSUED FOR BID

Project Title:
**MAGNOLIA PARK
ARLINGTON, MA**

Drawing Title:
MATERIALS PLAN

Project No. 080215
Drawn By: PWH
Checked By: PWH
Scale: 1"=20'
Date: March 28, 2016

Drawing No. **L3**

MATERIALS LEGEND

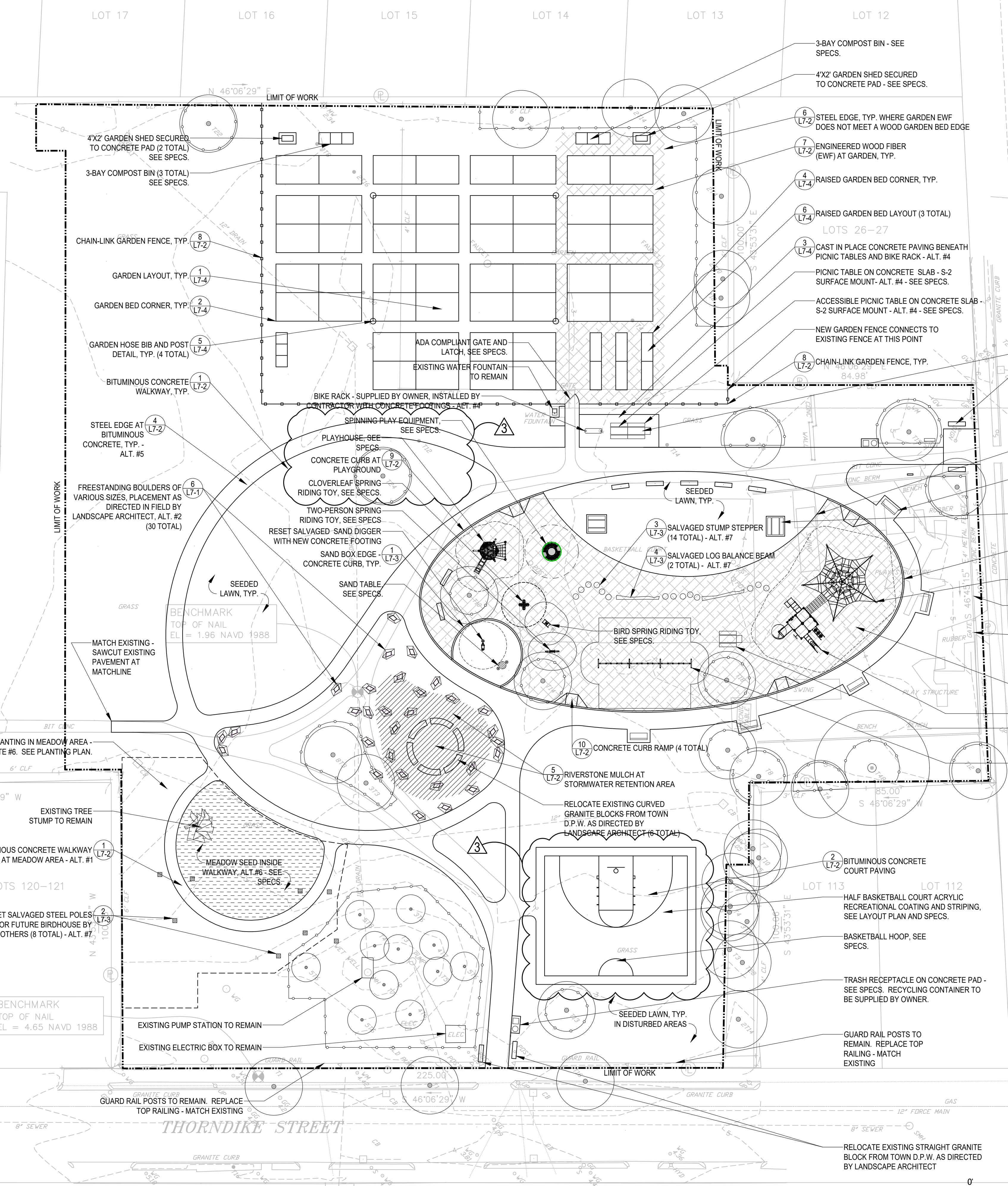
- LIMIT OF WORK
- TREE PROTECTION FENCE
- CHAIN LINK FENCE
- PICNIC TABLE
- ACCESSIBLE PICNIC TABLE
- BENCH
- RECYCLING (BY OWNER) AND TRASH RECEPTACLE
- GRANITE BLOCK
- TREE STUMP TO REMAIN
- BIRDHOUSE POLE
- BICYCLE RACK (SUPPLIED BY OWNER)
- GARDEN HOSE BIB AND POST
- ▨ RIVERSTONE MULCH AT STORMWATER AREA
- ▨ ENGINEERED WOOD FIBER (EWF)
- ▨ MEADOW SEED AREA
- ▨ MEADOW PLANTING AREA

MATERIALS NOTES:

- THE GENERAL CONTRACTOR SHALL VERIFY ALL DIMENSIONS AND ELEVATIONS AND REPORT ANY DISCREPANCIES TO THE LANDSCAPE ARCHITECT.
- STORAGE AREAS BY THE GENERAL CONTRACTOR SHALL BE LOCATED WITHIN THE LIMIT OF WORK AND APPROVED BY THE LANDSCAPE ARCHITECT / OWNER.
- AT ALL LOCATIONS WHERE EXISTING PAVEMENT ABUTS NEW CONSTRUCTION, THE EDGE OF THE EXISTING PAVEMENT SHALL BE SAWCUT TO A CLEAN EDGE.
- GENERAL CONTRACTOR SHALL STAKE LAYOUT OF PLAN ON THE SITE FOR APPROVAL OF LANDSCAPE ARCHITECT BEFORE COMMENCEMENT OF CONSTRUCTION. ALL CURVES SHALL BE STAKED WITH MARKERS, SEE LAYOUT PLAN.
- FOR FOUNDATIONS FOR ALL PLAY EQUIPMENT AND BASKETBALL HOOP SEE SPECS AND GEOTECH REPORT. ALL FOUNDATIONS TO BE MINIMUM 48" DEPTH.
- ALL WALKWAY AREAS TO BE BITUMINOUS CONCRETE UNLESS OTHERWISE INDICATED.
- HYDROSEEDING LAWN IN ALL DISTURBED AREAS UNLESS OTHERWISE NOTED.

ADD. ALTERNATES:

- WALKWAY LOOP AT MEADOW AREA. SEE MATERIALS PLAN.
- BOULDERS FOR STORMWATER AREA. SEE MATERIALS PLAN.
- ELECTRIC SUPPLY AND OUTDOOR OUTLET AT PICNIC TABLES AT GARDEN. SEE MATERIALS PLAN.
- 2 PICNIC TABLES AND BIKE RACK (SUPPLIED BY OWNER) WITH CONCRETE PAD AT GARDEN. SEE MATERIALS PLAN.
- STEEL EDGING AT ALL BITUMINOUS CONCRETE WALKS. SEE MATERIALS PLAN AND DETAIL #4 ON L7-2.
- MEADOW AREA PLANTING - TREES AND MEADOW SEED MIX. SEE PLANTING PLAN.
- BIRDHOUSE POLES AND FOUNDATIONS (8 TOTAL) - SEE #2 ON L7-3. STUMP STEPPERS IN PLAYGROUND AREA (14 TOTAL) FROM EXISTING ONSITE REDWOOD/CYPRESS TREES - SEE #3 ON L7-3. LOG BALANCE BEAMS IN PLAYGROUND AREA (2 TOTAL) - SEE #4 ON L7-3. SEE MATERIALS PLAN.



NOTE: ENTIRE PARK LOCATED WITHIN FLOOD ZONE AE.

