

LAYOUT AND MATERIALS NOTES:

ALL SITE CONSTRUCTION SHALL BE IN CONFORMANCE WITH THE MASSACHUSETTS DEPARTMENT OF PUBLIC WORKS (DPW) STANDARD SPECIFICATIONS FOR HIGHWAYS AND BRIDGES, AND THE CITY OF ARLINGTON.

THE CONTRACTOR SHALL BE RESPONSIBLE FOR THE LEGAL REMOVAL AND DISPOSAL OF ALL DEBRIS FROM THE SITE AND AS MAY BE DIRECTED BY THE A/E.

ALL HANDICAP PARKING AND SIGNAGE SHALL BE IN CONFORMANCE WITH THE RULES AND REGULATIONS OF THE ARCHITECTURAL BARRIERS BOARD.

ALL CHAIN LINK FENCING AND GATES SHALL BE INSTALLED IN ACCORDANCE WITH THE MANUFACTURER'S DIRECTION.

THE SITE CONTRACTOR SHALL CUT AND MATCH ALL EXISTING ROAD AND SIDEWALK PAVEMENT AS REQUIRED TO SET NEW CURBING AND GRADING.

ALL LINES AND DIMENSIONS ARE PARALLEL OR PERPENDICULAR TO THE LINES FROM WHICH THEY ARE MEASURED UNLESS OTHERWISE INDICATED.

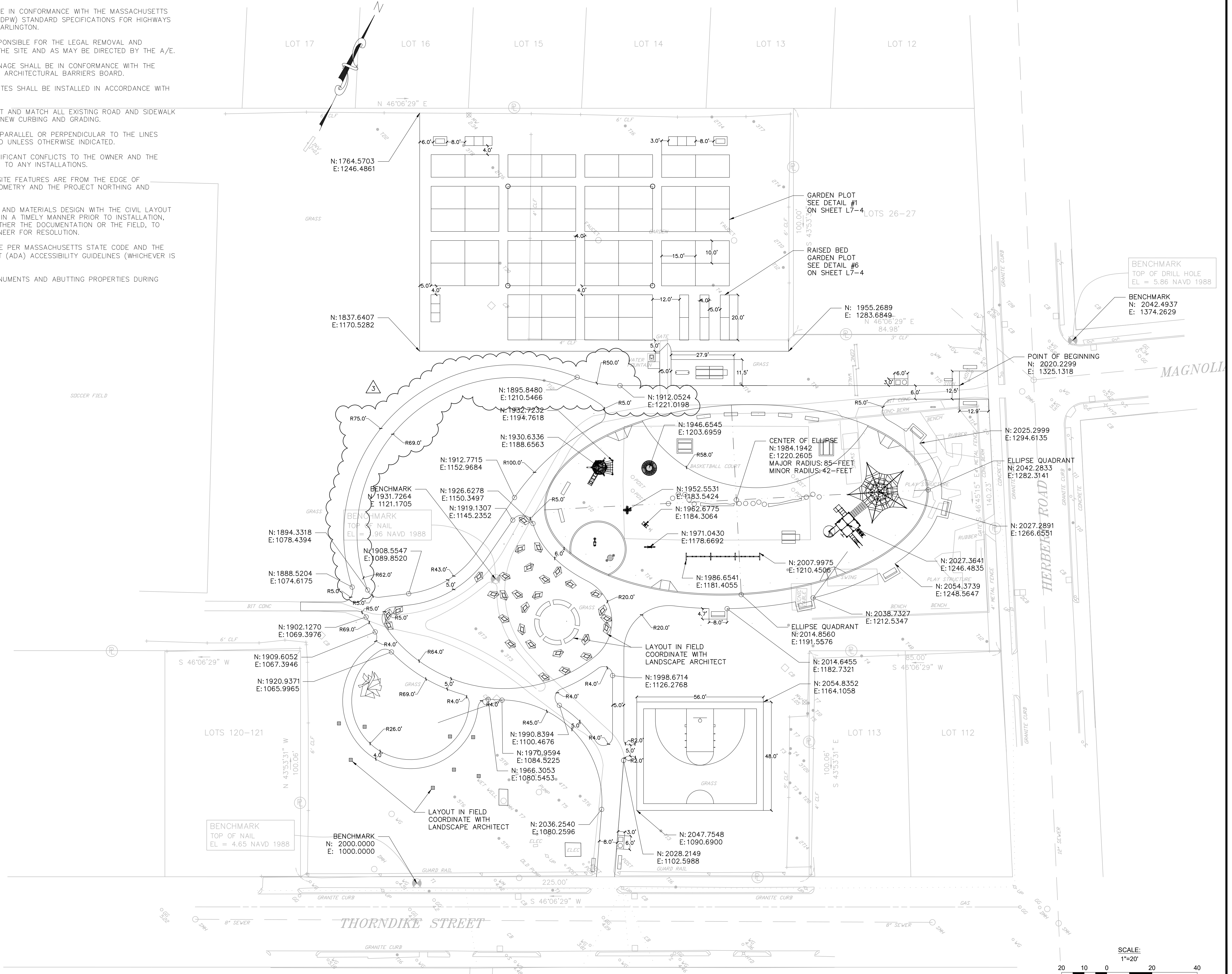
CONTRACTOR SHALL REPORT SIGNIFICANT CONFLICTS TO THE OWNER AND THE ENGINEER FOR RESOLUTION PRIOR TO ANY INSTALLATIONS.

DIMENSIONS OF WALKWAYS AND SITE FEATURES ARE FROM THE EDGE OF PAVEMENT AS LAID OUT WITH GEOMETRY AND THE PROJECT NORTHING AND EASTINGS.

COORDINATE LANDSCAPE LAYOUT AND MATERIALS DESIGN WITH THE CIVIL LAYOUT AND MATERIALS DESIGN. REPORT IN A TIMELY MANNER PRIOR TO INSTALLATION, ALL SIGNIFICANT CONFLICTS IN EITHER THE DOCUMENTATION OR THE FIELD, TO THE LANDSCAPE ARCHITECT ENGINEER FOR RESOLUTION.

ALL ACCESSIBLE RAMPS SHALL BE PER MASSACHUSETTS STATE CODE AND THE AMERICANS WITH DISABILITIES ACT (ADA) ACCESSIBILITY GUIDELINES (WHICHEVER IS MORE STRINGENT).

PROTECT EXISTING PROPERTY MONUMENTS AND ABUTTING PROPERTIES DURING CONSTRUCTION ACTIVITIES.



NOTE: ENTIRE PARK LOCATED WITHIN FLOOD ZONE AE.

HEDLUND DESIGN GROUP

Landscape Architecture + Planning

10 Central Street, Arlington MA 02476 USA
 617-826-9302 www.hedlunddesign.com

DESIGN CONSULTANT:

hord|coplan|macht

HORD COPLAN MACHT, INC.
 ARCHITECTURE
 LANDSCAPE ARCHITECTURE
 PLANNING
 INTERIOR DESIGN
 759 E Pratt Street, Suite 1100
 Baltimore, MD 21202
 410 837 7311
 410 837 6550 fax
 www.hcm2.com

dej SITE DESIGN
 CIVIL ENGINEERING
 LAND PLANNING

DESIGN • ENGINEERING • INNOVATION
 14 Spring St. 1st Floor
 Waltham, MA 02451
 781 850 2731
 www.doyleeng.com

3	CON COM REVISIONS	8-15-2016
1	ISSUED FOR BID	3-28-2016
No.	Description	Date

DWG ISSUE & REVISION HISTORY

Stamp

ISSUED FOR BID

Project Title:

MAGNOLIA PARK
 ARLINGTON, MA

Drawing Title:

LAYOUT PLAN

Project No. 080215
 Drawn By: WD
 Checked By: WD
 Scale: 1"=20'
 Date: March 28, 2016

Drawing No. L5