



Massachusetts Avenue Streetscape Concept Plan: Mill Street to Pond Lane

Public Information Meeting 3 – Final Concept Plan

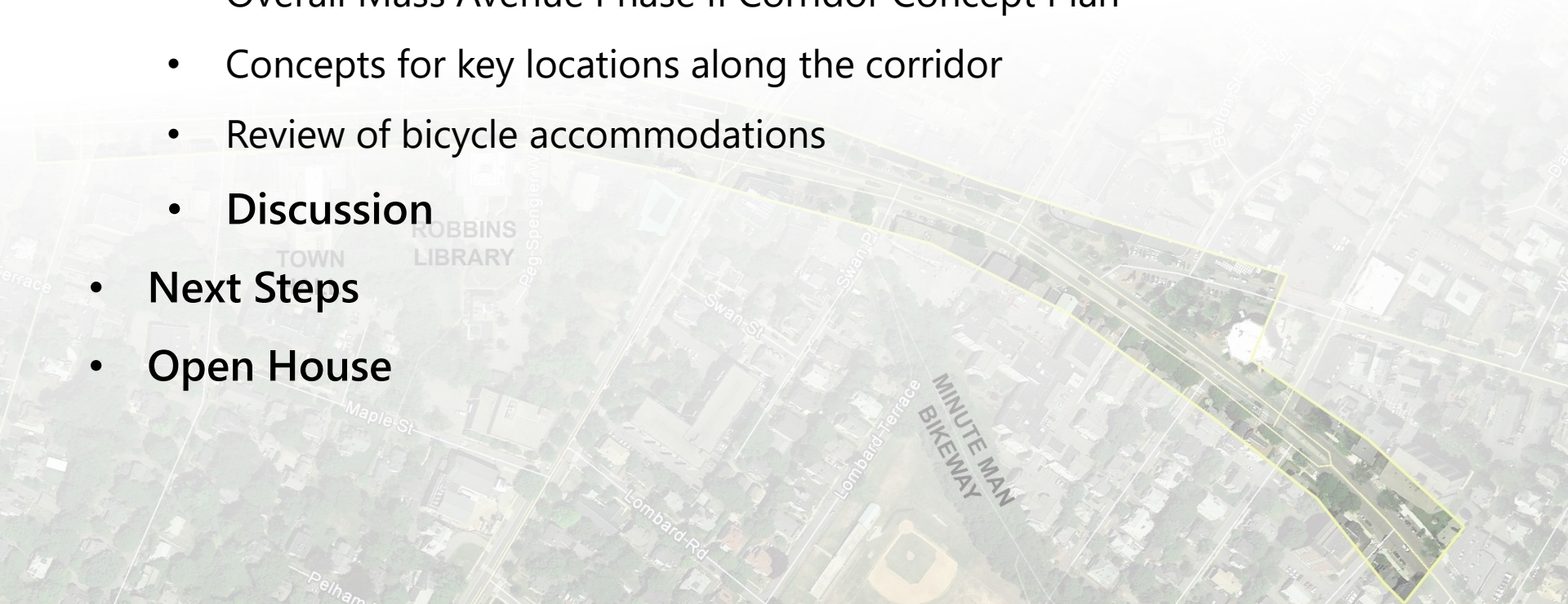
Town of Arlington, Massachusetts

September 22, 2016



AGENDA

- **Welcome and Introduction**
 - Review meeting objectives
 - Recap of June Forum
- **Final Concept Plan**
 - Overall Mass Avenue Phase II Corridor Concept Plan
 - Concepts for key locations along the corridor
 - Review of bicycle accommodations
- **Discussion**
- **Next Steps**
- **Open House**



MASSACHUSETTS AVENUE PHASE II PROJECT EXTENTS



PHASE II CORRIDOR CONCEPTUAL MASTER PLAN



PHASE II CONCEPTUAL MASTER PLAN

PHASE II CORRIDOR CONCEPTUAL MASTER PLAN



TRANSPORTATION REVIEW

- Bike, pedestrian, vehicle counts at 5 locations (7-9 AM, 4-6 PM)
- Inform ability for cross-sectional changes
- Initial review/recommendations regarding crosswalk locations
- Continued evaluation as part of design phase



PHASE II CORRIDOR CONCEPTUAL MASTER PLAN



- Ability to remove left-turn lanes at Medford and Franklin
- Ability to remove median and create wider sidewalks along south side
- Off-set bike lane from parking space (similar to East Arlington)
- Requires modification to signal timing and phasing

PHASE II CORRIDOR CONCEPTUAL MASTER PLAN

- Ability to relocate crosswalks
 - Further evaluation of right-turn conflicts throughout day
- Provision of bike lanes on both sides of Mass Ave
- Consideration of 3-lane section
- Potential to refine crosswalk locations through design



BROADWAY PLAZA/MEMORIAL PARK TODAY



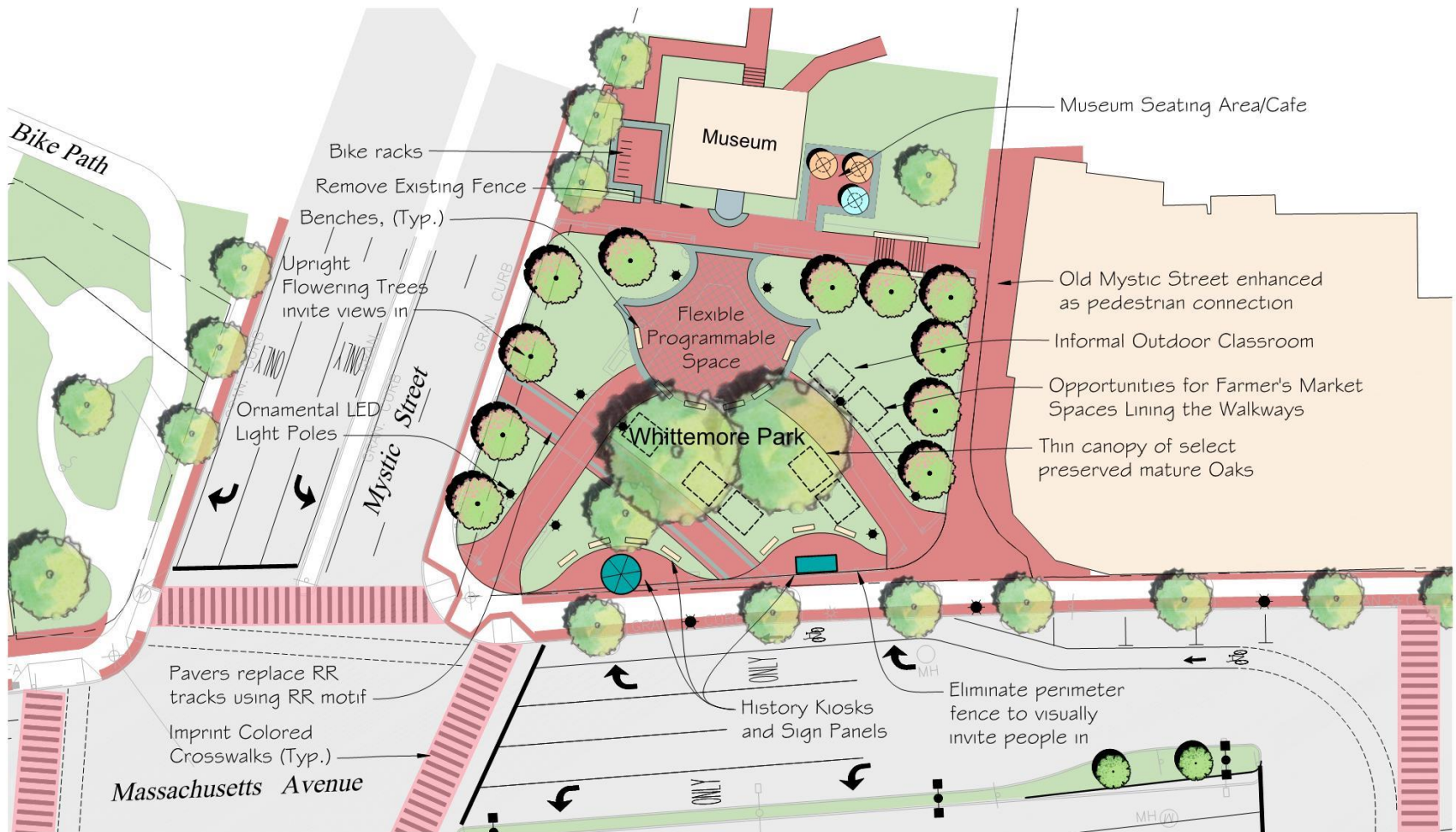
BROADWAY PLAZA & MEMORIAL PARK



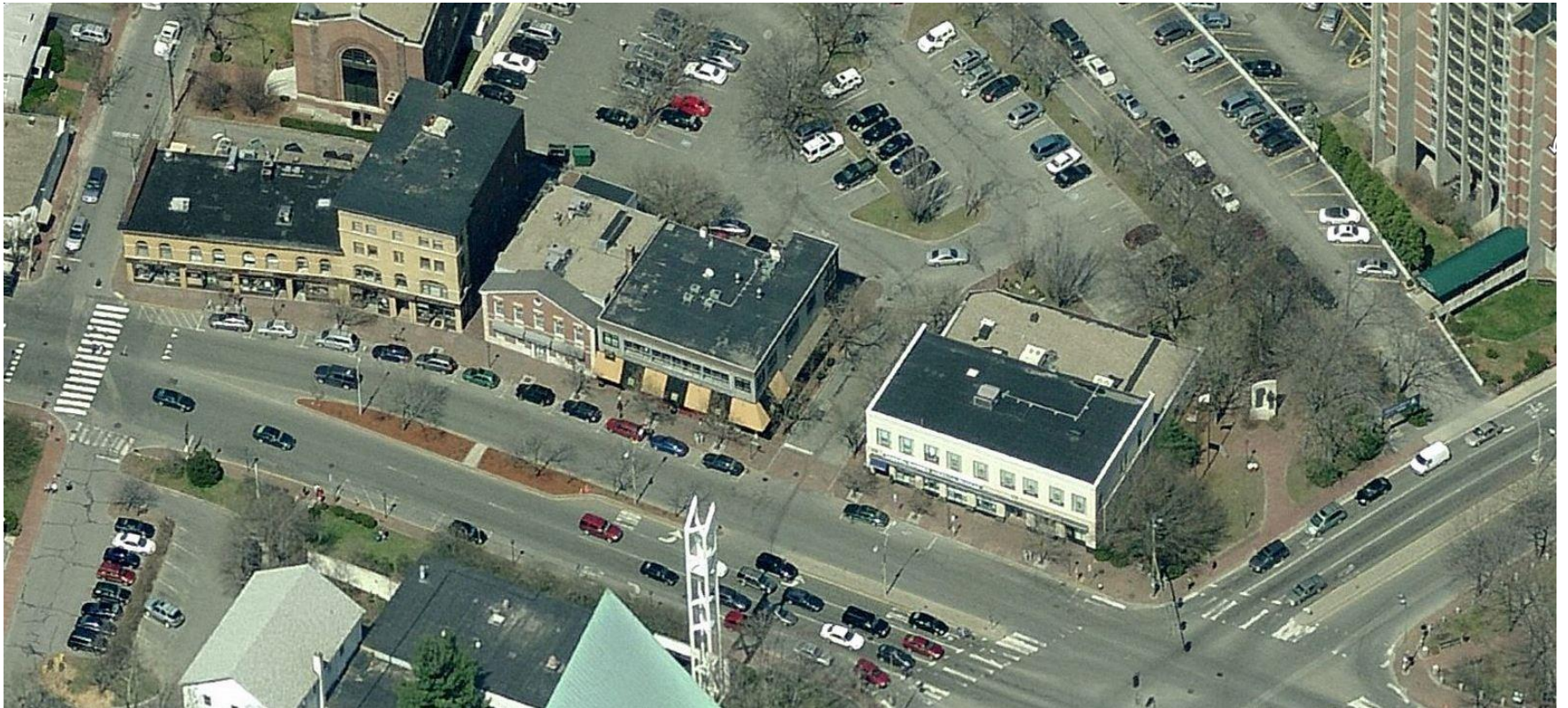
WHITTEMORE PARK TODAY



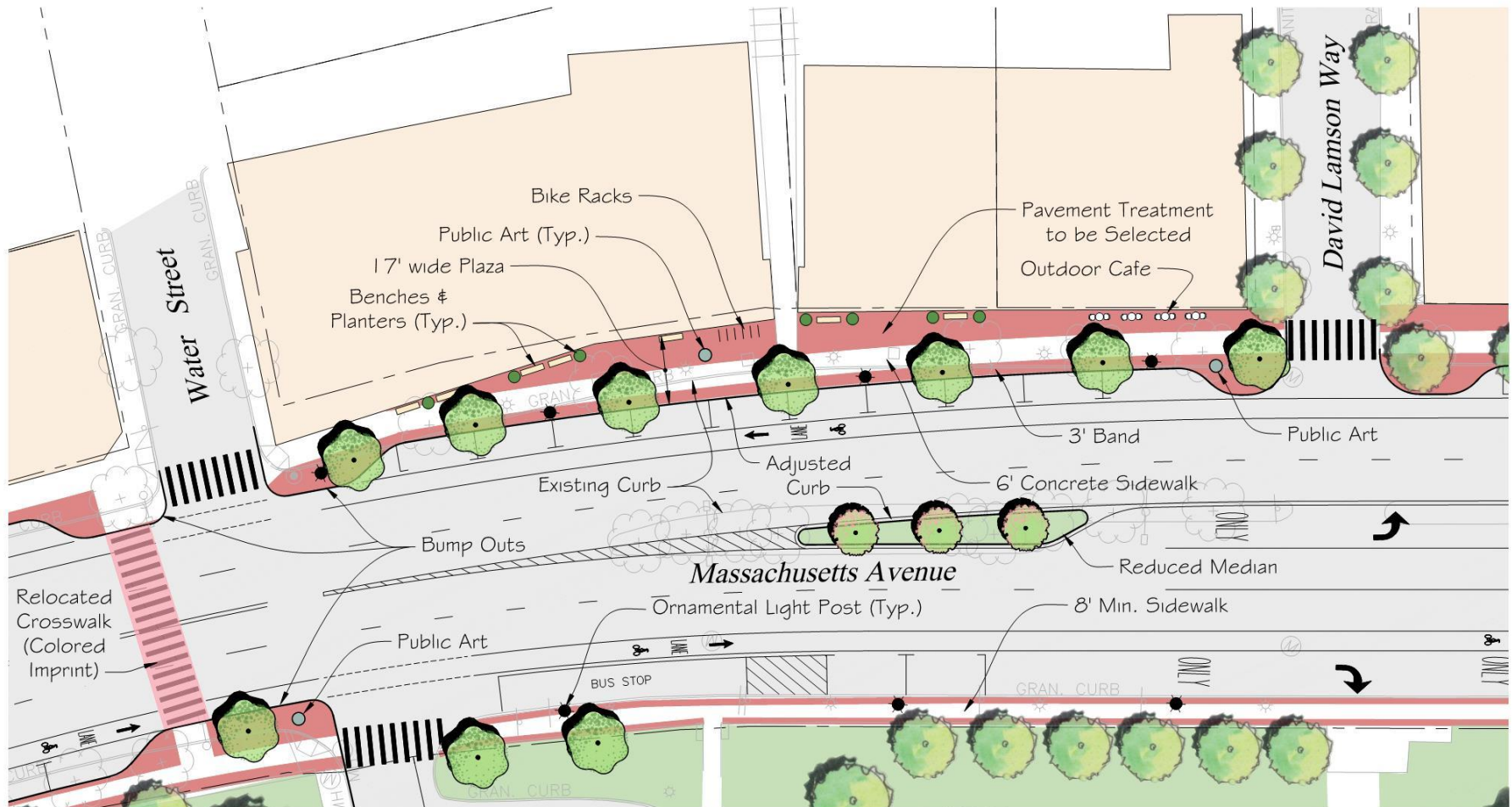
WHITTEMORE PARK CONCEPT PLAN



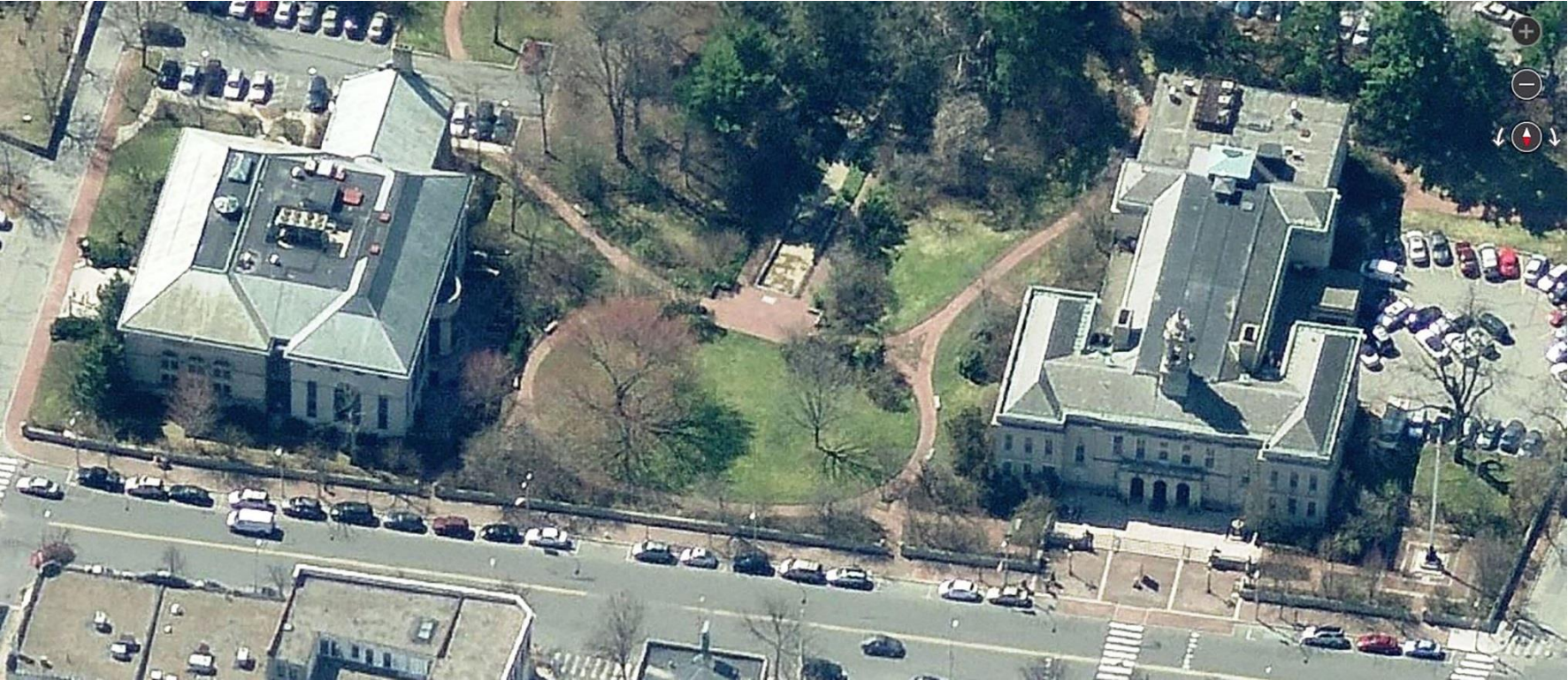
COMMERCIAL BLOCK TODAY



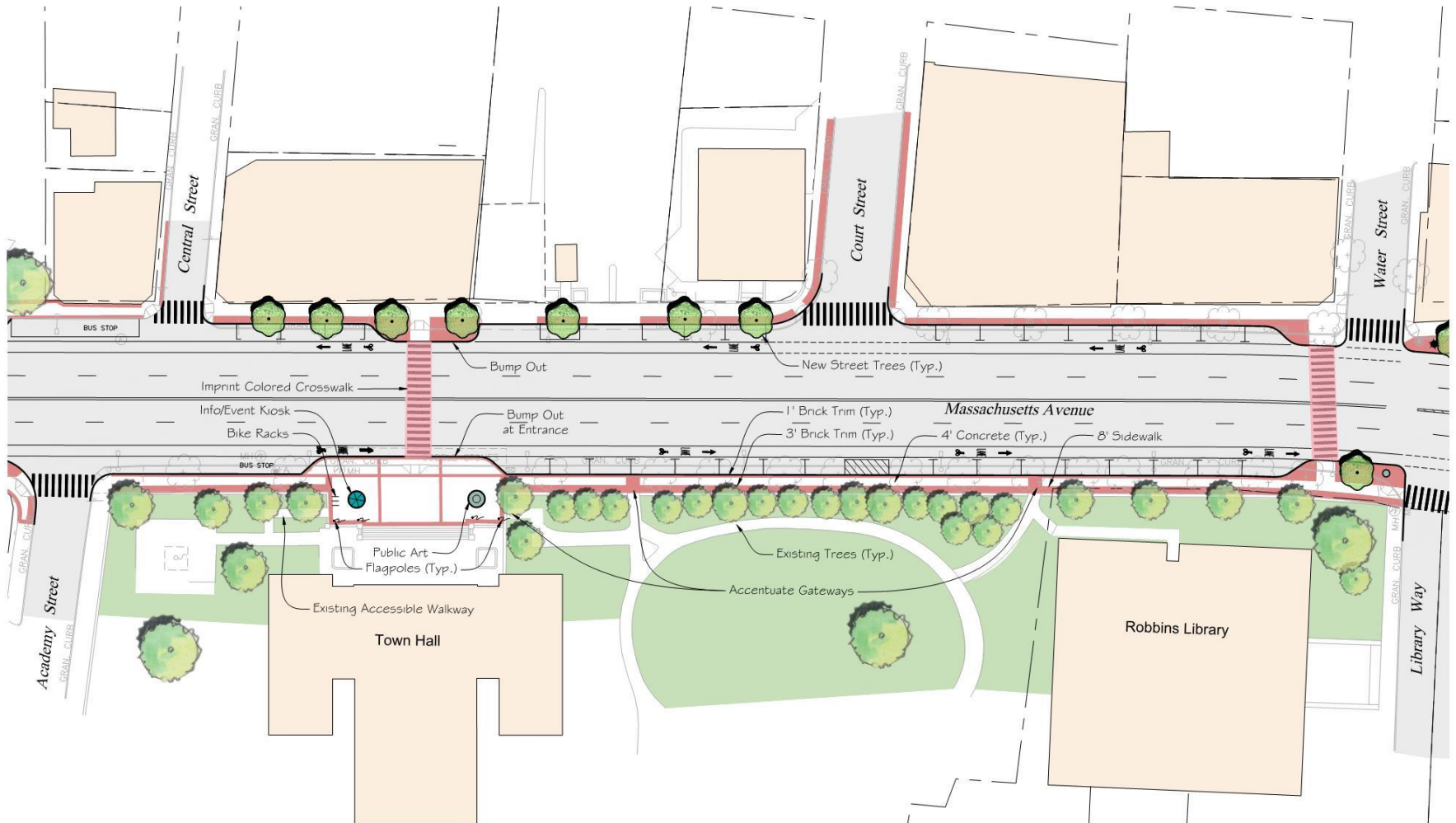
COMMERCIAL BLOCK SIDEWALK & PLAZA TREATMENTS



CIVIC CENTER TODAY



CIVIC CENTER CONCEPT PLAN



EAST ARLINGTON MASS AVENUE PALETTE OF MATERIALS



ADDITIONAL SIDEWALK TREATMENT EXAMPLES



DISCUSSION



NEXT STEPS

- Submit Final Concept Plan
- Procure Funding
- Develop 25% Plans
- Review with town's people

