

Hardware Set 01 - (NEW SECURE VESTIBULE PAIR)

2 EA	CONT. HINGE	112HD	626	IVE
1 EA	DOOR CORD	786-18	626	SCE
1 EA	KEYED REMOVABLE MULLION	KR4854	689	VON
1 EA	PANIC HARDWARE	LD-35A-EO	626	VON
1 EA	ELEC PANIC HARDWARE	LK-RX-DEL-35AN-LP-388	626	VON
1 EA	MORTISE CYLINDER	SFC MORTISE CYLINDER HOUSING AS REQUIRED	626	SCH
1 EA	RM CYLINDER	SFC RM CYLINDER HOUSING AS REQUIRED	626	SCH
1 EA	90 DEG OFFSET PULL	819HD 10"	630	IVE
1 EA	SURFACE GLASSER	4111 SCL3H4	689	LCN
1 EA	SURF. AUTO OPERATOR	9642 DD MS	689	LCN
1 EA	MOUNTING PLATE	4110-18	689	LCN
1 EA	ACTUATOR, WALL MOUNT	8310-855	630	LCN
1 EA	ACTUATOR, WALL MOUNT	8310-856	630	LCN
1 EA	WALL STOP	WS408407CVX	630	IVE
1 EA	PUSH BUTTON	621AL	629	SCE
1 EA	POWER SUPPLY	(TO BE MOUNTED IN OFFICE FOR REMOTE RELEASE)		
		78902 902RHS		LGR VON
		CARD READER BY OTHERS		
		SEALS BY DOOR SUPPLIER		

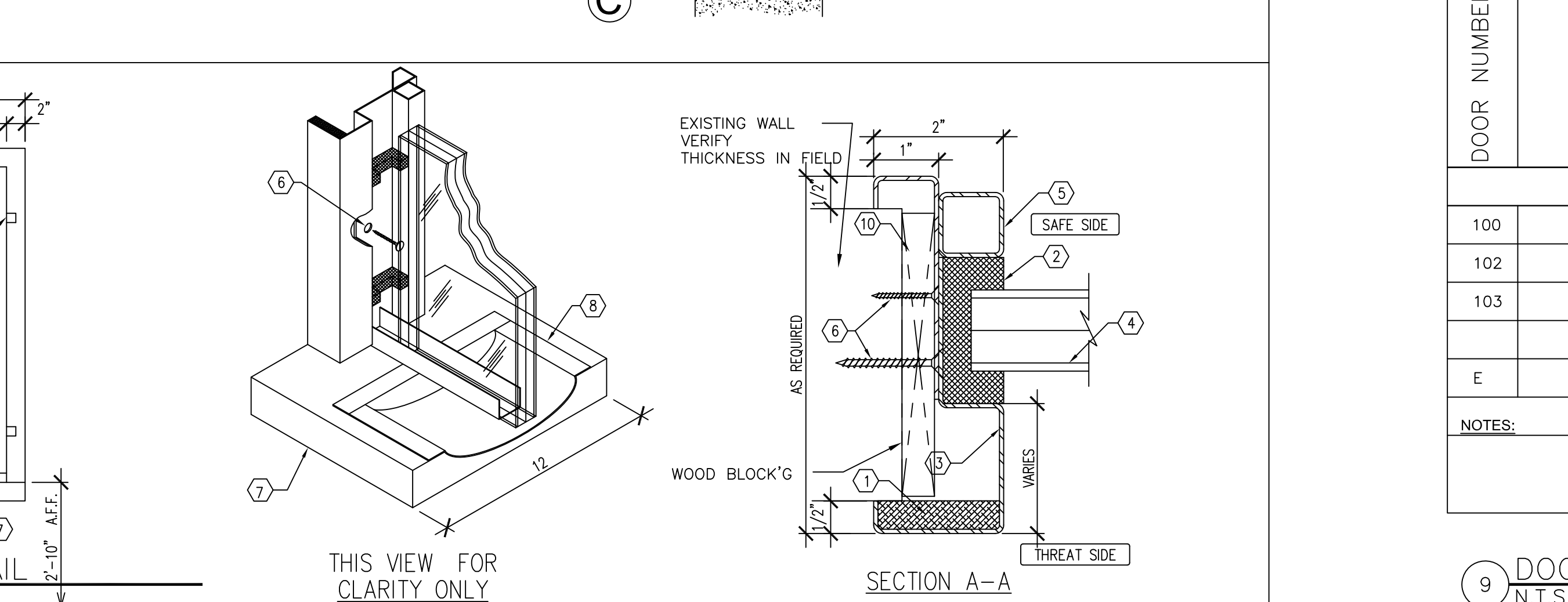
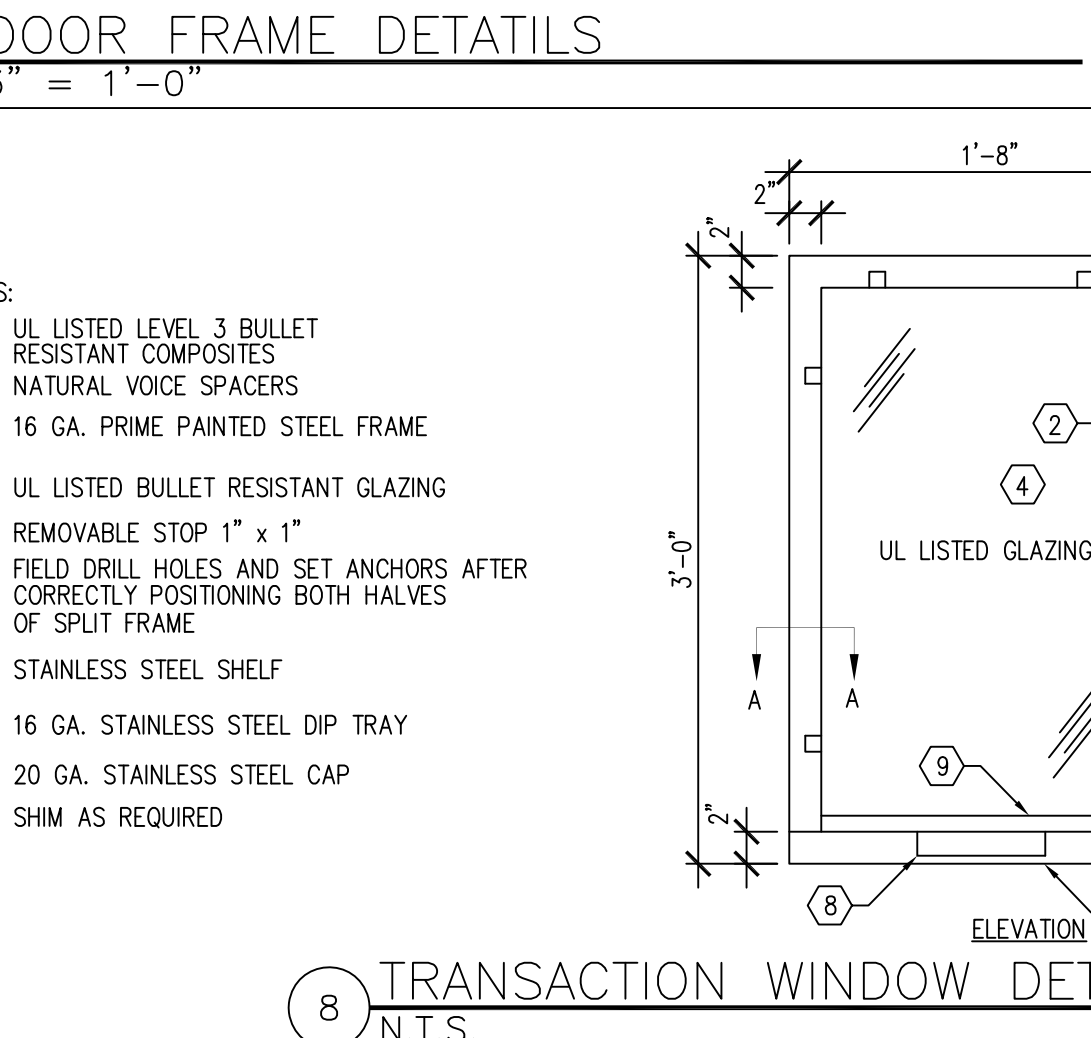
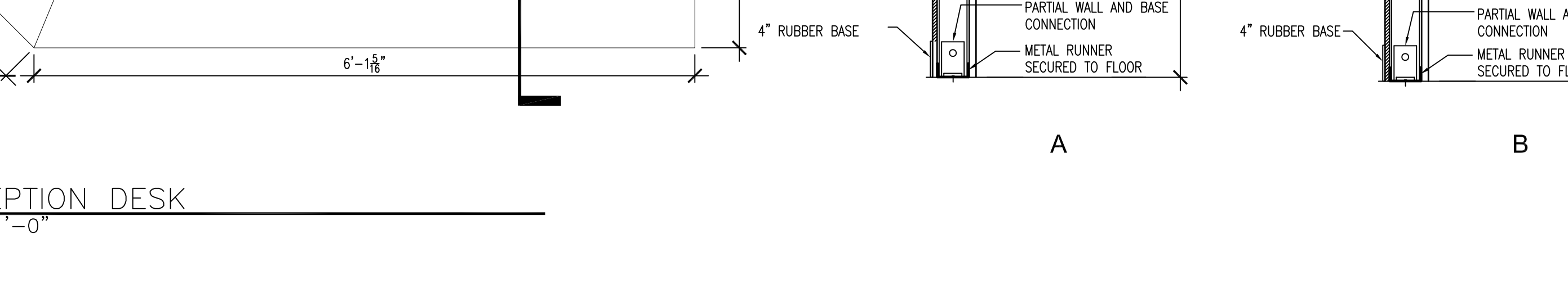
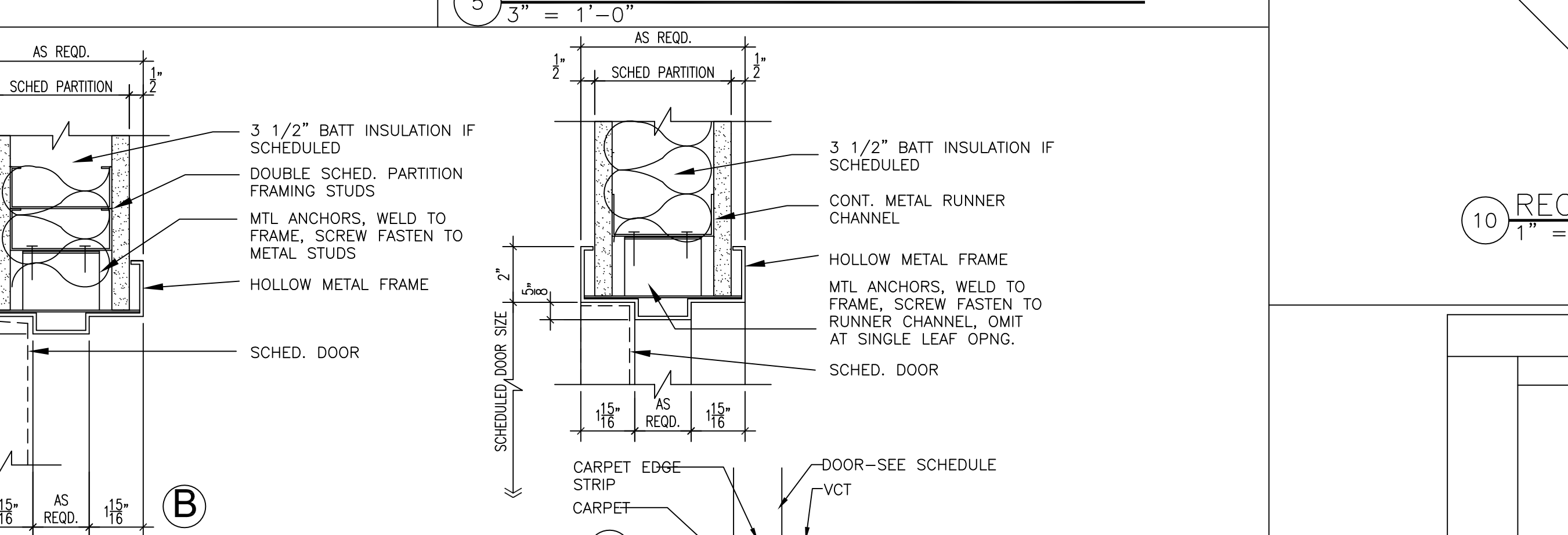
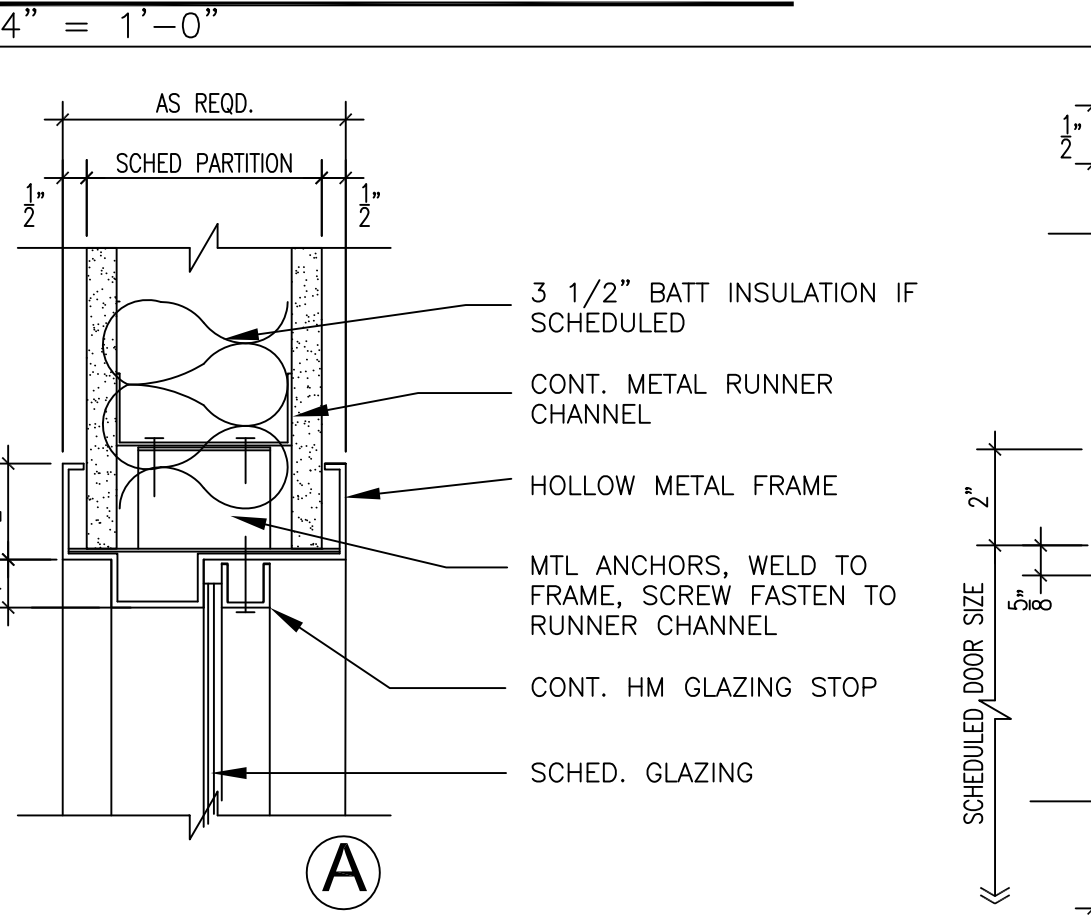
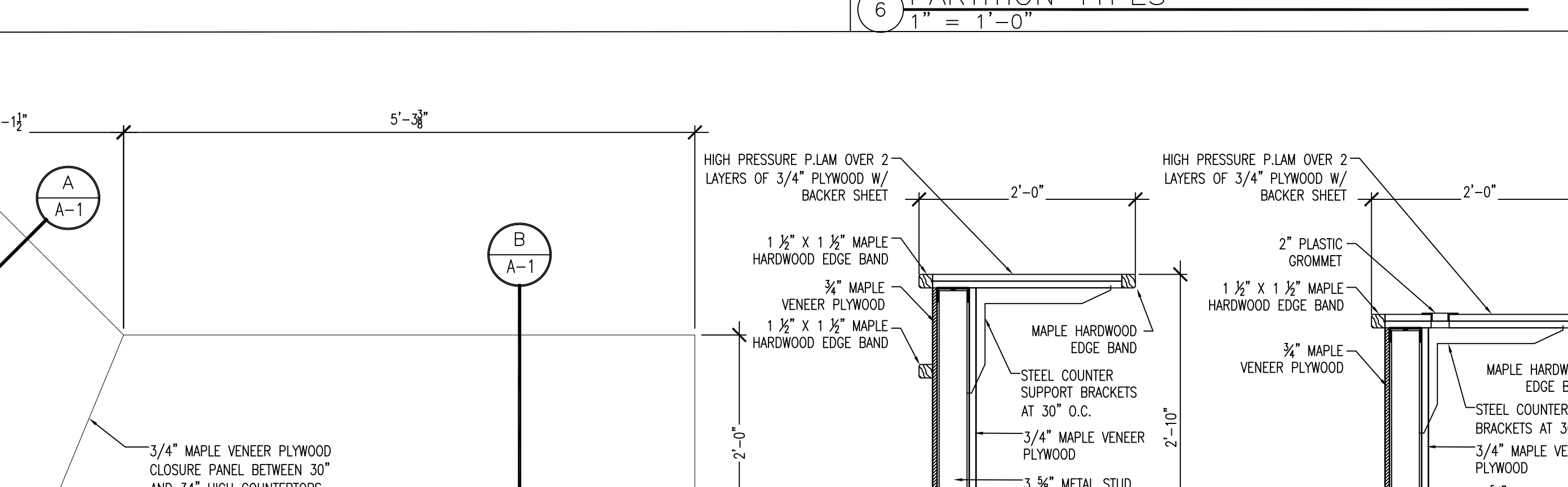
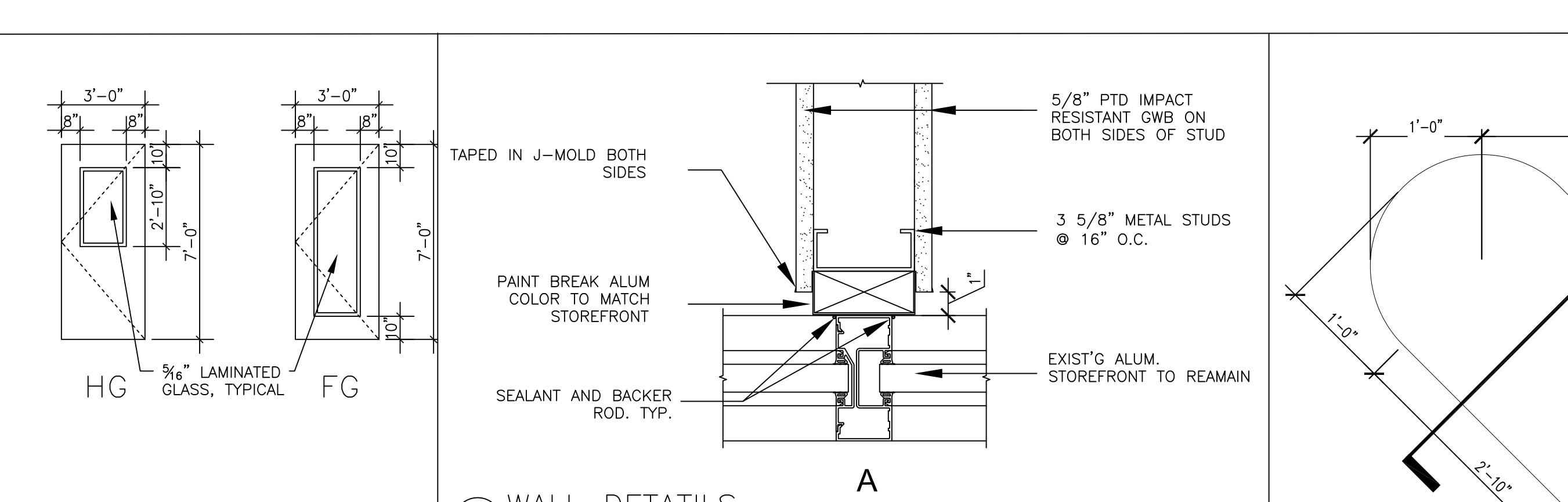
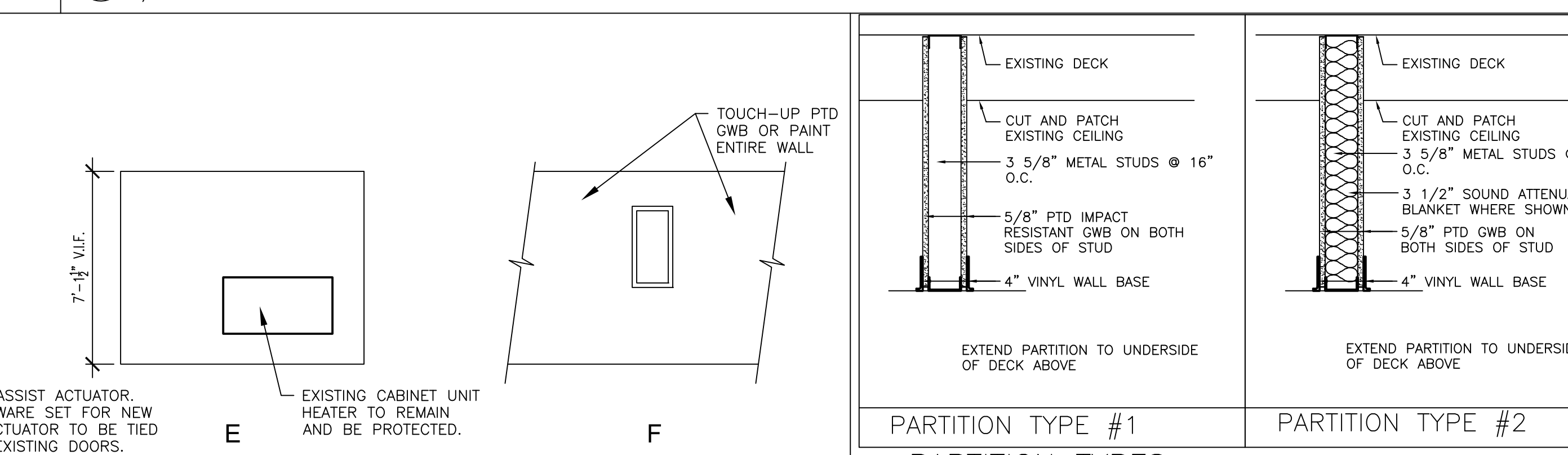
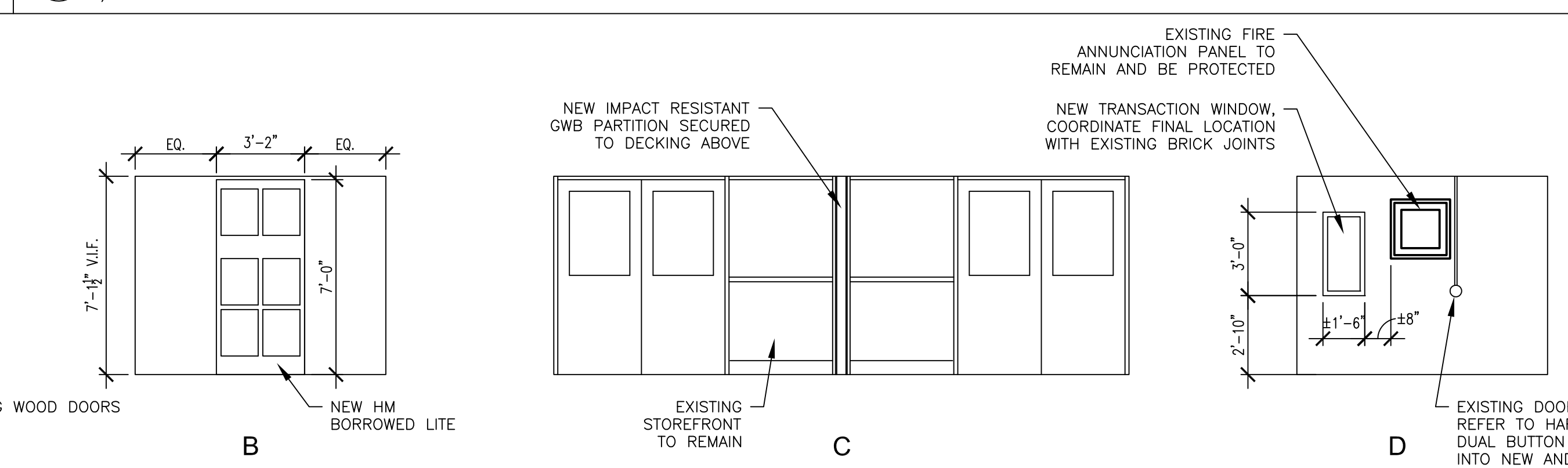
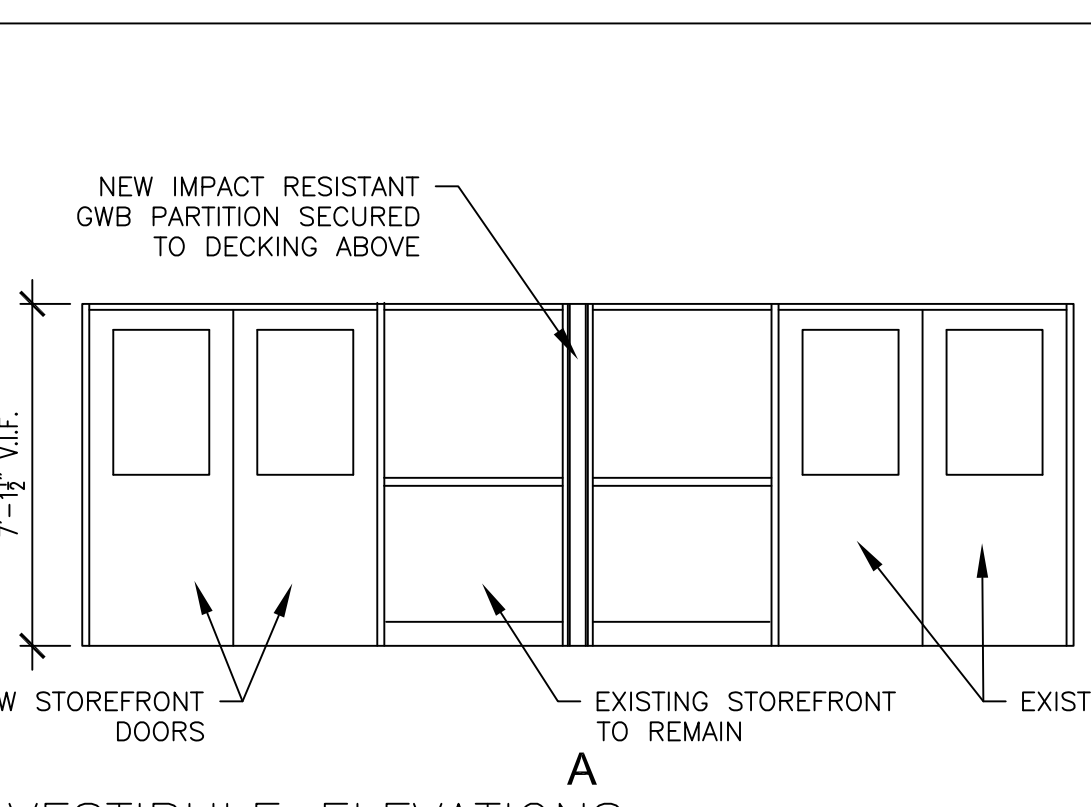
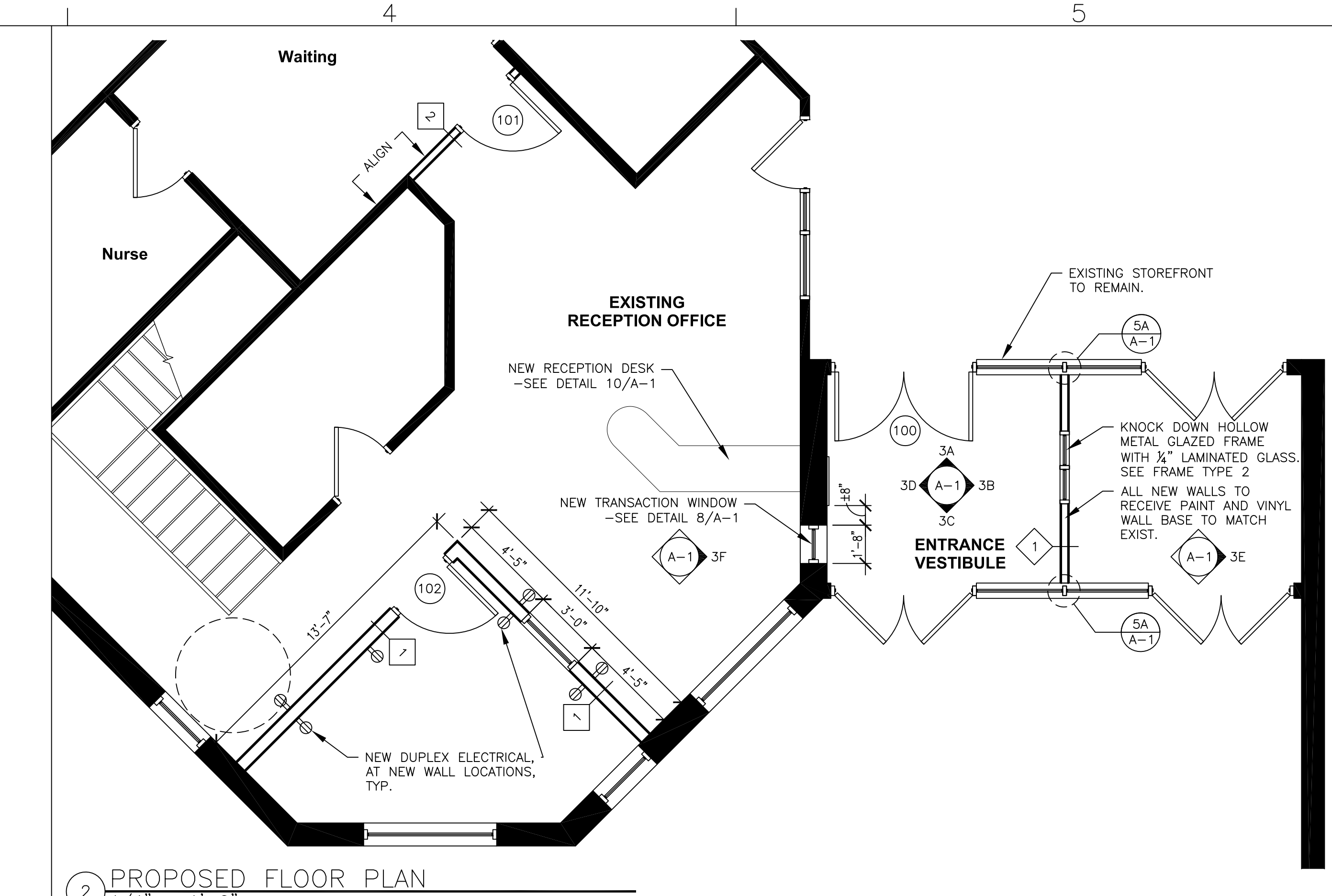
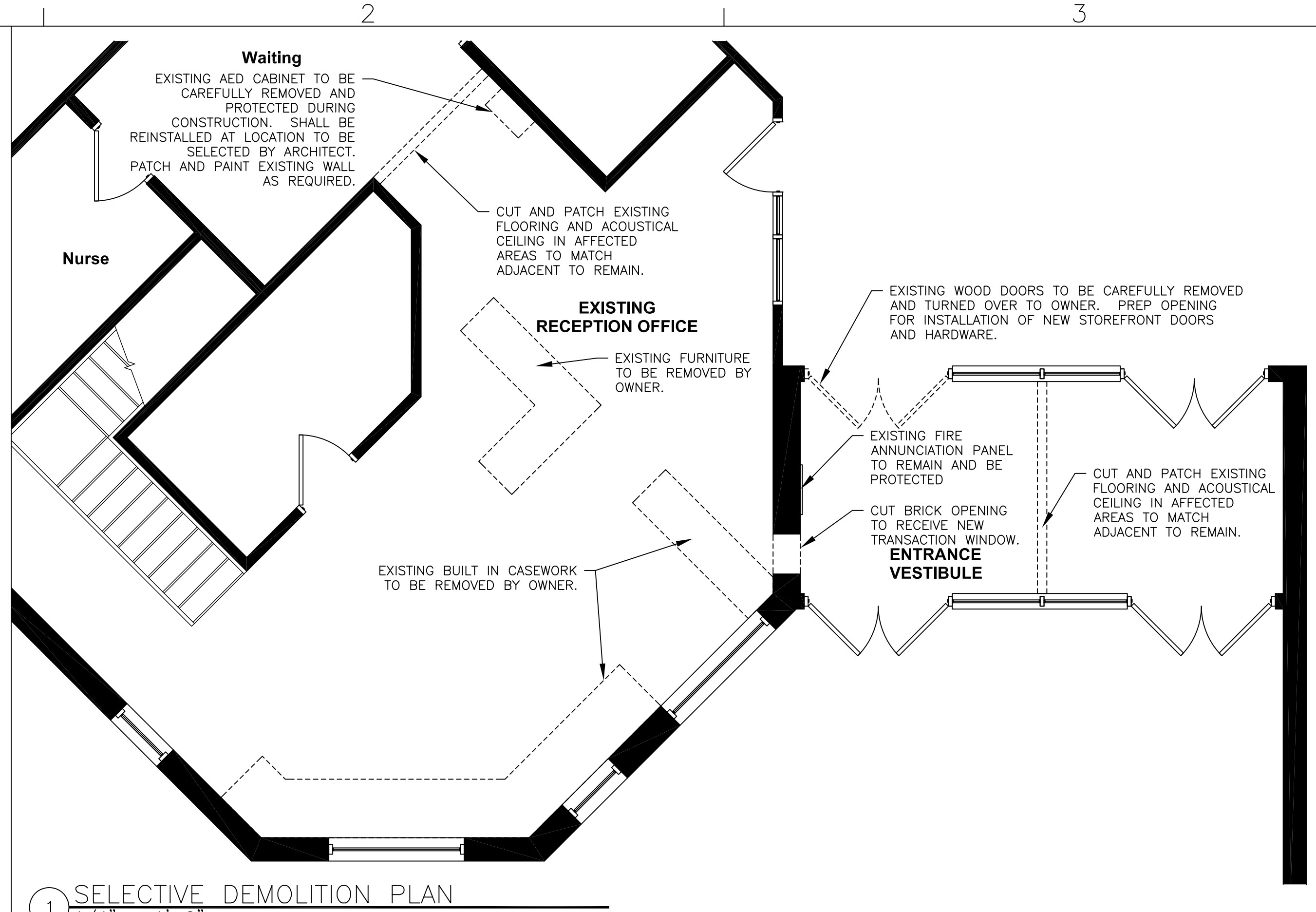
NEW DOORS IN EXISTING FRAME: AUTO OPERATOR AND ELECTRIFIED EXIT DEVICE WITH OFFSET PULL TO BE INSTALLED ON LHR LEAF.
 REMOVE EXISTING VESTIBULE-MOUNTED PUSH BUTTON AND REPLACE WITH NEW DOUBLE BUTTON (LCN 8310-855).
 PERMANENT CORES BY OWNER.

Operational Description
 DOORS NORMALLY CLOSED AND LOCKED. VALID CARD FROM VESTIBULE OR PUSH BUTTON FROM OFFICE TO RETRACT LATCH ON ACTIVE LEAF. ALLOWING ENTRY. MECHANICAL ENTRY BY KEY. FREE EGRESS THROUGH EITHER LEAF BY INSIDE PUSH BARS.
 AUTOMATIC OPERATION OF ACTIVE LEAF BY WALL-MOUNTED ACTUATORS. COORDINATE WIRING OF VESTIBULE ACTUATOR WITH ACCESS SYSTEM SO IT IS ONLY ENABLED WHEN DOOR IS UNLOCKED. INSIDE BUTTON TO RETRACT LATCH AND OPEN DOOR AT ALL TIMES.

Hardware Set 02 - (SINGLE OFFICE DOOR)

3 EA	HINGE	88B1 4.5 X 4.5 NRP	652	IVE
1 EA	CLASSROOM SECURITY	ND75 RHO XN12455	626	SCH
1 EA	WALL STOP	WS408407CVX	630	IVE
3 EA	SILENCER	SR64	630	IVE

PERMANENT CORES (BEST SFC) FURNISHED BY OWNER.



DOOR SCHEDULE - SEEKONK SCHOOLS

DOOR NUMBER	DOOR			FRAME	DETAIL			FIRE RATING (MIN)	HARDWARE	REMARKS
	WIDTH	HEIGHT	THICKNESS		HEAD DETAIL	JAMB DETAIL	SILL DETAIL			
100	2@3'-0"	7'-0"	1 3/4"	ALUM.	HG	EXISTING STOREFRONT SYSTEM TO REMAIN			SECURITY VESTIBULE	1
102	3'-0"	7'-0"	1 3/4"	WD	NATURAL FINISH	FG	HM	PAINTED	1 7B/A-1 7C/A-1 7C/A-1	2 UNDERCUT DOOR 1"
103	3'-0"	7'-0"	1 3/4"	WD	NATURAL FINISH	F	HM	PAINTED	1 7B/A-1 7C/A-1 7C/A-1	2 -

EXISTING DOORS TO REMAIN

NOTES:

D·R·A
 Drummy Rosane Anderson, Inc.
 235 Bear Hill Road 4th Floor Waltham, MA 02451
 617-964-1700 fax 617-964-1701 info@draws.com

OTTOSON MIDDLE SCHOOL VESTIBULE & ADMIN OFFICE IMPROVEMENTS
 Arlington, Massachusetts

FLOOR PLANS, ELEVATIONS, SCHEDULES AND DETAILS

Scale: VARIES
 Job No. 17010.00
 Drawn By: MRH
 Date: 06/07/17

A-1