

NFI for The Town of Arlington

NFI MA - Arlington

Issued for Bid/Permit
07/28/2017

23 Maple Street
Arlington MA 01915

Siemasko + Verbridge



Architecture
Interior Design
Landscape Design
Decorating
svdesign.com
978.927.3745

GENERAL CONDITIONS:

1. THE CONSTRUCTION SITE MUST BE CLEAN AND SECURE AT THE END OF EACH DAY.
2. CONTRACTOR IS RESPONSIBLE FOR ALL MEANS AND METHODS OF CONSTRUCTION. CONTRACTOR IS RESPONSIBLE FOR CONSTRUCTION SITE SAFETY.
3. CONTRACTOR SHALL BE RESPONSIBLE FOR ALL COORDINATION OF SCHEDULING, SUBMITTALS AND WORK.
4. CONTRACTOR IS RESPONSIBLE FOR ALL CUTTING AND PATCHING.
5. CONTRACTOR SHALL SUBMIT A CHANGE ORDER FOR ADDED ITEMS OR UNFORESEEN CONDITIONS RESULTING IN A CHANGE TO THE CONTRACT SUM OR SCHEDULE.
6. PROJECT HAS SPECIFIC TIME CONSTRAINTS FOR PROJECT COMPLETION. REFER TO OWNER'S REQUIREMENTS.
7. GC SHALL BE RESPONSIBLE FOR ALL TEMPORARY FACILITIES INCLUDING UTILITIES, WATER, SANITARY FACILITIES, HEAT AND VENTILATION DURING THE ENTIRE DURATION OF THE PROJECT AS REQUIRED. STAGING AREA TO BE REVIEWED WITH OWNER PRIOR TO THE COMMENCEMENT OF WORK.
8. CONTRACTOR SHALL BE RESPONSIBLE FOR WEATHERPROOFING THE SITE AS REQUIRED BY THE WORK, INCLUDING SNOW REMOVAL.
9. CONTRACTOR SHALL BE REQUIRED TO PROVIDE A RECORD SET AT THE END OF THE PROJECT ALONG WITH OPERATIONS MANUALS FOR ALL SYSTEMS.
10. CONTRACTOR SHALL BE RESPONSIBLE FOR FINAL CLEANING.
11. CONTRACTOR SHALL COORDINATE WITH OWNER'S CONSULTANTS AND ALLOW ACCESS AS NEEDED TO THE SITE.
12. OWNER IS A TAX-EXEMPT ENTITY. OWNER SHALL NOT PAY TAX FOR ALL MATERIALS.
13. THE PROJECT SCOPE CONSISTS OF REPAIR AND REPLACEMENT OF EXISTING MATERIALS, ELEMENTS, FIXTURES AND ASSOCIATED REPAIRS NECESSARY FOR THE REPLACEMENT AND REPAIR OF EXISTING FACILITY. THE PROJECT IS CLASSIFIED UNDER CHAPTER 7 ALTERATIONS, LEVEL 1. AN ACCESSIBLE ROUTE TO ANY PRIMARY FUNCTION AREA SHALL BE ACCESSIBLE; DOOR OPENINGS, CORRIDORS AND ACCESS WAY SHALL BE 36"; MAINTAIN A 32" CLEARANCE AT DOOR OPENINGS.

Revisions	Issue	Date & Issue Description	Check	By

Project Name: NFI MA - Arlington
Description: COVER
Scale:
Date: 07/28/2017
Drawn by: Author
File Name:

Plot Date: 07/28/2017 9:29:19 AM
Checked by: Checker
Project #: Project Number

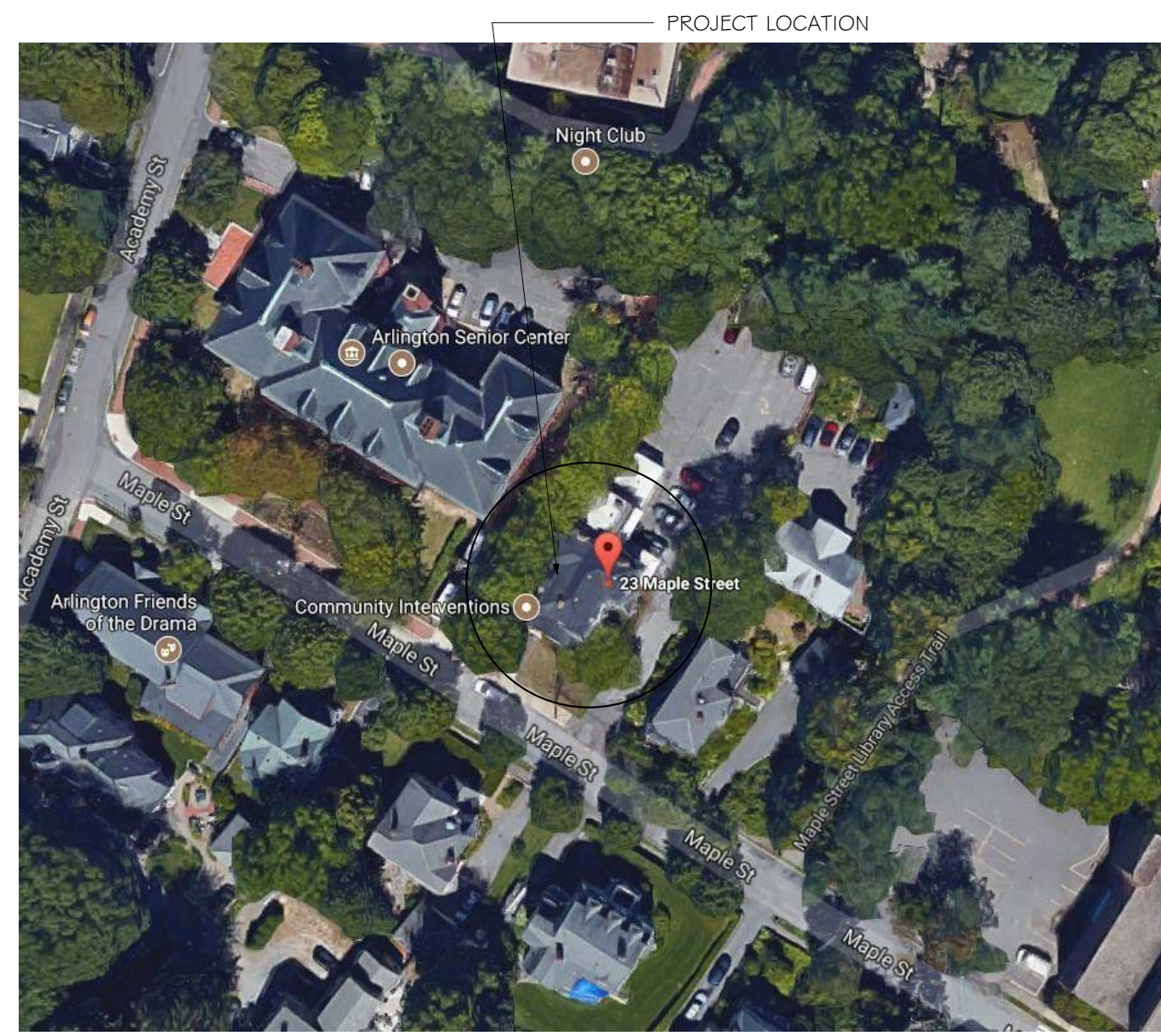
Renovation/Addition
NFI for The Town of Arlington
23 Maple Street
Arlington MA 01915

Siemasko + Verbridge
Architecture
Interior Design
Landscape Design
Decorating
www.svdesign.com
Beverly, Massachusetts 01915
t 978.927.3745
f 978.927.6565

COVER

A0.00

PROJECT LOCATION



PROJECT INFORMATION

AO.01	23 Maple Street
OCCUPANCY TYPE:	R-2, residential
CONSTRUCTION TYPE:	VB wood frame
BUILDING AREA:	3,000 +/- 3 stones
PROJECT AREA:	245 SQ. FT, FIRST FLOOR
ZONING:	BUSINESS

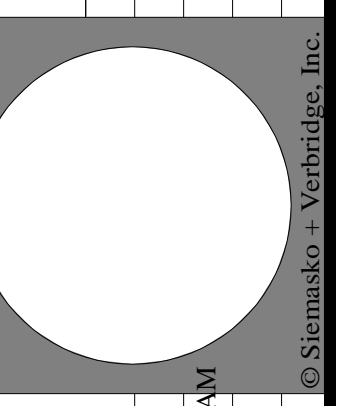
SHEET INDEX

Sheet Number	Sheet Name	ISSUE 1 - BID SET	COMMENTS
--------------	------------	-------------------	----------

ARCHITECTURAL

A0.02	GRAPHIC SYMBOLS	•	
A0.03	ABBREVIATIONS/GENERAL NOTES	•	
A0.04	ABBREVIATIONS/GENERAL NOTES CONT.	•	
A0.05	TYPICAL INFORMATION	•	
A1.01	FLOOR PLAN	•	
A1.02	INTERIOR ELEVATION	•	
A1.03	3D RENDERING	•	
A1.06	FINISH SPECIFICATIONS AND SCHEDULES	•	
A1.07	PARTITION TYPES & DETAILS	•	

Revisions	Issue	Date & Issue Description	Check	By
△	1	1		
	1	1		



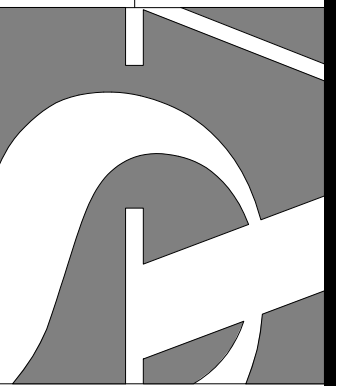
Project Name: NFI MA - Arlington	23 Maple Street Arlington MA 01915
Description: DRAWING INDEX, DRAWING LIST, LOCATION MAP	
Scale: 1/2" = 1'-0"	
Date: 07/28/2017	Plot Date: 07/22/2017 9:29:20 AM
Drawn by: Author	Checked by: Checker
File Name:	Project #: Project Number

Architecture
Interior Design
Landscape Design
Decorating

Siemasko + Verbridge

1226 Dodge Street
Beverly, Massachusetts 01915
www.svdesign.com
t 978.927.3745
f 978.927.6565

Renovation/Addition
NFI for The Town of Arlington



DRAWING INDEX, DRAWING LIST, LOCATION MAP

A0.01

GRAPHIC SYMBOLS (CONT)

POWER AND COMMUNICATION (CONT)

SECURITY DEVICES

- CARD READER
- ELECTRIC DOOR BELL PUSH
- ELECTRIC DOOR BELL
- INTERCOM
- REMOTE DOOR RELEASE BUTTON
- MOTION SENSOR
- INTRUSION ALARM
- ELECTRIC DOOR HINGE
- ELECTRICAL DOOR HOLD OPEN
- ELECTRICAL DOOR RELEASE
- ELECTRICAL DOOR MONITOR CONTACT
- DOUBLE DOOR MONITOR CONTACT
- ELECTRIC LOCKSET
- ELECTRIC KEY SWITCH
- ELECTRIC STRIKE
- MAGNETIC LOCKSET

FURNITURE SYSTEMS MOUNTED DEVICES

- FURNITURE SYSTEMS MOUNTED, SINGLE RECEPTACLE
- FURNITURE SYSTEMS MOUNTED, DUPLEX RECEPTACLE
- FURNITURE SYSTEMS MOUNTED, QUADRAPLEX RECEPTACLE
- FURNITURE SYSTEMS MOUNTED, VOICE/DATA RECEPTACLE
- FURNITURE SYSTEMS MOUNTED, DATA RECEPTACLE
- FURNITURE SYSTEMS MOUNTED, VOICE RECEPTACLE
- FURNITURE MOUNTED, POWER POLE

ELEVATION INDICATIONS

- GLASS SYMBOL
- MASONRY COURSING
- WOOD VENEER
- STONE

SECTION INDICATIONS

- ACOUSTICAL CEILING TILE
- ALUMINUM
- BRICK
- CARPET
- CONCRETE
- CONCRETE MASONRY UNIT
- CUTSTONE
- EARTH OR GROUND
- FABRIC WRAPPED PANEL
- GLASS
- GRAVEL
- GYPSUM BOARD
- INSULATION (LOOSE OR BATT)
- INSULATION (RIGID)
- METAL
- PLASTER
- PLASTER/LATH
- PLYWOOD
- PRE-CAST PANELS
- SAND OR GROUT
- STONE
- WOOD (FINISHED)
- WOOD (CONTINUOUS MEMBER)
- WOOD (INTERRUPTED MEMBER)

GRAPHIC SYMBOLS (CONT)

POWER AND COMMUNICATION (CONT)

FLUSH FLOOR MOUNTED DEVICES

- FLUSH FLOOR MOUNTED, SINGLE RECEPTACLE
- FLUSH FLOOR MOUNTED, DUPLEX RECEPTACLE
- FLUSH FLOOR MOUNTED, QUADRAPLEX RECEPTACLE
- FLUSH FLOOR MOUNTED, COMBO DUPLEX & VOICE/DATA RECEPTACLE
- FLUSH FLOOR MOUNTED, COMBO DUPLEX & VOICE/DATA RECEPTACLE
- FLUSH FLOOR MOUNTED, COMBO DUPLEX & VOICE/DATA RECEPTACLE
- FLUSH FLOOR MOUNTED, COMBO QUAD, AV & VOICE/DATA RECEPTACLES
- FLUSH FLOOR MOUNTED, VOICE/DATA RECEPTACLE
- FLUSH FLOOR MOUNTED, DATA RECEPTACLE
- FLUSH FLOOR MOUNTED, VOICE RECEPTACLE
- FLUSH FLOOR MOUNTED, SYSTEMS WORKSTATION PANEL POWER INFEEED
- FLUSH FLOOR MOUNTED, SYSTEMS WORKSTATION PANEL VOICE INFEEED
- FLUSH FLOOR MOUNTED, AV RECEPTACLE
- FLUSH FLOOR MOUNTED, RAISED FLOOR BOX, COMBO POWER, VOICE/DATA
- FLUSH FLOOR MOUNTED, RAISED FLOOR BOX, COMBO POWER, VOICE/DATA, AV
- FLUSH FLOOR MOUNTED, RAISED FLOOR BOX, AV

FLUSH FLOOR MOUNTED, POKE THRU, DEVICES

- FLUSH FLOOR MOUNTED, POKE THRU, SINGLE RECEPTACLE
- FLUSH FLOOR MOUNTED, POKE THRU, DUPLEX RECEPTACLE
- FLUSH FLOOR MOUNTED, POKE THRU, QUADRAPLEX RECEPTACLE
- FLUSH FLOOR MOUNTED, POKE THRU, COMBO DUPLEX & VOICE/DATA RECEPTACLE
- FLUSH FLOOR MOUNTED, POKE THRU, COMBO QUAD & VOICE/DATA RECEPTACLES
- FLUSH FLOOR MTD, POKE THRU, COMBO DUPLEX, AV AND VOICE/DATA RECEPTS
- FLUSH FLOOR MTD, POKE THRU, COMBO QUAD, AV & VOICE/DATA RECEPTACLES
- FLUSH FLOOR MOUNTED, POKE THRU, VOICE/DATA RECEPTACLE
- FLUSH FLOOR MOUNTED, POKE THRU, DATA RECEPTACLE
- FLUSH FLOOR MOUNTED, POKE THRU, VOICE RECEPTACLE
- FLUSH FLOOR MOUNTED, POKE THRU, AV RECEPTACLE
- FLUSH FLOOR MOUNTED, POKE THRU, SYS WORKSTATION PANEL POWER INFEEED
- FLUSH FLOOR MOUNTED, POKE THRU, SYS WORKSTATION PANEL VOICE INFEEED

SURFACE FLOOR MOUNTED DEVICES

- SURFACE FLOOR MOUNTED, SINGLE RECEPTACLE
- SURFACE FLOOR MOUNTED, DUPLEX RECEPTACLE
- SURFACE FLOOR MOUNTED, QUADRAPLEX RECEPTACLE
- SURFACE FLOOR MOUNTED, COMBO DUPLEX & VOICE/DATA RECEPTACLE
- SURFACE FLOOR MOUNTED, COMBO QUAD & VOICE/DATA RECEPTACLES
- SURFACE FLOOR MOUNTED, COMBO DUPLEX, AV AND VOICE/DATA RECEPTACLES
- SURFACE FLOOR MOUNTED, COMBO QUAD, AV & VOICE/DATA RECEPTACLES
- SURFACE FLOOR MOUNTED, VOICE/DATA RECEPTACLE
- SURFACE FLOOR MOUNTED, DATA RECEPTACLE
- SURFACE FLOOR MOUNTED, VOICE RECEPTACLE
- SURFACE FLOOR MOUNTED, AV RECEPTACLE
- SURFACE FLOOR MOUNTED, SYS WORKSTATION PANEL POWER INFEEED
- SURFACE FLOOR MOUNTED, SYSTEMS WORKSTATION PANEL VOICE INFEEED
- SURFACE FLOOR MOUNTED, CONDUIT STUB UP, AV
- SURFACE FLOOR MOUNTED, CONDUIT STUB UP, POWER
- SURFACE FLOOR MOUNTED, CONDUIT STUB UP, VOICE/DATA

SURFACE FLOOR MOUNTED, POKE THRU DEVICES

- SURFACE FLOOR MOUNTED, POKE THRU, SINGLE RECEPTACLE
- SURFACE FLOOR MOUNTED, POKE THRU, DUPLEX RECEPTACLE
- SURFACE FLOOR MOUNTED, POKE THRU, QUADRAPLEX RECEPTACLE
- SURFACE FLOOR MOUNTED, POKE THRU, COMBO DUPLEX & VOICE/DATA RECEPT
- SURFACE FLOOR MOUNTED, POKE THRU, COMBO QUAD & VOICE/DATA RECEPTS
- SURFACE FLOOR MTD, POKE THRU, COMBO DUPLEX, AV AND VOICE/DATA RECEPTS
- SURFACE FLOOR MTD, POKE THRU, COMBO QUAD, AV & VOICE/DATA RECEPTACLES
- SURFACE FLOOR MOUNTED, POKE THRU, VOICE/DATA RECEPTACLE
- SURFACE FLOOR MOUNTED, POKE THRU, DATA RECEPTACLE
- SURFACE FLOOR MOUNTED, POKE THRU, VOICE RECEPTACLE
- SURFACE FLOOR MOUNTED, POKE THRU, AV RECEPTACLE
- SURFACE FLOOR MOUNTED, POKE THRU, SYS WORKSTATION PANEL POWER INFEEED
- SURFACE FLOOR MOUNTED, POKE THRU, SYS WORKSTATION PANEL VOICE INFEEED

GRAPHIC SYMBOLS (CONT)

REFLECTED CEILING

- ACOUSTICAL CEILING AND GRID
- CEILING HEIGHT CHANGE SYMBOL
- CEILING HEIGHT CHANGE SYMBOL
- FINISH CEILING HEIGHT SYMBOL
- GRID STARTPOINT SYMBOL
- CEILING FINISH TAG
- MOTION SENSOR
- CEILING MOUNTED SPEAKER
- CEILING MOUNTED CAMERA
- CEILING MOUNTED SMOKE DETECTOR
- CEILING MOUNTED EXIT SIGN
- WALL MOUNTED EXIT SIGN
- DENOTES EXISTING TO REMAIN
- DENOTES EXISTING TO BE RELOCATED
- FLORESCENT LIGHT FIXTURE
- FLORESCENT LIGHT FIXTURE / EMERGENCY CIRCUIT
- EXISTING LIGHT FIXTURE TO BE REMOVED
- UNDER CABINET FLORESCENT FIXTURE
- FLORESCENT STRIP FIXTURE
- FLORESCENT PENDANT FIXTURE
- RECESSED DOWNLIGHT
- RECESSED ADJUSTABLE DOWNLIGHT
- RECESSED WALL WASHER
- TRACK LIGHTING
- SURFACE MOUNTED LIGHT FIXTURE
- WALL SCONCE
- LIGHT SWITCH
- DIMMER SWITCH
- RETURN AIR
- SUPPLY AIR
- CIRCULAR DIFFUSER
- LINEAR DIFFUSER
- EXHAUST FAN
- FIRE SPRINKLER
- ACCESS DOOR

POWER AND COMMUNICATION

WALL MOUNTED DEVICES

- EQUIPMENT TAG (REFER TO EQUIPMENT SCHEDULE)
- WALL MOUNTED FIRE ALARM STROBE
- FIRE ALARM PULL
- FIRE WARDEN STATION
- WALL MOUNTED, SINGLE RECEPTACLE
- WALL MOUNTED, DUPLEX RECEPTACLE
- WALL MOUNTED, QUADRAPLEX RECEPTACLE
- WALL MOUNTED, VOICE/DATA RECEPTACLE
- WALL MOUNTED, DATA RECEPTACLE
- WALL MOUNTED, VOICE RECEPTACLE
- WALL MOUNTED, THERMOSTAT
- WALL MOUNTED, CABLE TV RECEPTACLE
- WALL MOUNTED, AV RECEPTACLE
- WALL MOUNTED, AV TROUGH
- WALL MOUNTED, ELECTRICAL JUNCTION BOX
- WALL MOUNTED, VOICE/DATA JUNCTION BOX
- WALL MOUNTED, SYSTEMS WORKSTATION PANEL POWER INFEEED
- WALL MOUNTED, SYSTEMS WORKSTATION PANEL VOICE/DATA INFEEED
- WALL MOUNTED, CONDUIT STUB-OUT POWER
- WALL MOUNTED, CONDUIT STUB-OUT VOICE AND DATA
- WALL MOUNTED, CONDUIT STUB-OUT AV
- WALL MOUNTED, PLUG MOLD

GRAPHIC SYMBOLS

CONSTRUCTION

- COLUMN GRID REFERENCE NUMBER
- COLUMN GRID LINES AND REFERENCE NUMBER
- EXISTING CONSTRUCTION TO REMAIN
- EXISTING CONSTRUCTION TO BE DEMOLISHED
- NEW PARTITION
- 1 HR. RATED PARTITION
- 2 HR. RATED PARTITION
- 3 HR. RATED PARTITION
- 4 HR. RATED PARTITION
- SMOKE PARTITION
- EGRESS PATH PRIMARY
- EGRESS PATH SECONDARY
- MILLWORK
- MILLWORK ABOVE
- DETAIL NUMBER
- SHEET NUMBER
- DESCRIPTION OF SIMILAR OR OPPOSITE
- FLOOR NUMBER AND AREA OR PHASE
- AREA TO BE DETAILED
- LOCATION ON ROW WHERE ELEVATION IS SHOWN
- DIRECTION OF ELEVATION
- ROW ON SHEET WHERE ELEVATION IS SHOWN
- SHEET NUMBER WHERE ELEVATION IS SHOWN
- REVISION REFERENCE NUMBER
- REVISION CLOUD DEPICTING ARE REVISED
- ROOM NAME
- ROOM NUMBER
- SHEETNOTE REFERENCE
- WALL TYPE REFERENCE
- DOOR REFERENCE NUMBER (REFER TO DOOR SCHEDULE)
- DOOR TYPE
- HARDWARE TYPE
- DOOR NUMBER
- DOOR TYPE / HARDWARE TYPE
- WINDOW REFERENCE NUMBER (REFER TO WINDOW SCHEDULE)
- MILLWORK REFERENCE NUMBER (REFER TO MILLWORK SCHEDULE)
- ELEVATION DATUM REFERENCE
- MATCH LINE SYMBOL
- ALIGN WITH ESTABLISHED SURFACES
- FIRE ALARM PULL
- FIRE WARDEN STATION
- WALL MOUNTED, FIRE EXTINGUISHER CABINET
- WALL MOUNTED FIRE EXTINGUISHER
- WALL MOUNTED FIRE HOSE CABINET
- WALL MOUNTED FIRE VALVE
- WALL MOUNTED FIRE VALVE CABINET

FINISH

- WALL FINISH
- BASE FINISH
- WALL FINISH
- WALL FINISH
- WALL FINISH
- WAINSCOT FINISH
- BASE FINISH
- EXTENT OF WALL / WAINSCOT / BASE FINISH
- SPECIAL FINISH
- FLOOR FINISH
- CHANGE IN FLOOR FINISH

Project Name: 23 Maple Street, Arlington MA 01915

Project Description: NFI for The Town of Arlington

Project Number: 978.927.6565

Project Name: Siemasko + Verbridge

Project Address: 126 Dodge Street, Beverly, Massachusetts 01915

Project Website: www.svdesign.com

Project Dates: 02/20/2017 - 9:29:21 AM

Checked by: Checker

Project #: Project Number

Revisions	Issue	Date & Description	Check	By
1		1		

REFLECTED CEILING NOTES

- DESIGN SUSPENDED CEILING FRAMING SYSTEMS TO RESIST A LATERAL FORCE OF 20% OF THE WEIGHT OF THE CEILING ASSEMBLY AND ANY LOADS TRIBUTARY TO THE SYSTEM. USE A MINIMUM CEILING WEIGHT OF 5 POUNDS PER SQUARE FOOT TO DETERMINE THE LATERAL FORCE.
- WHERE CEILING LOADS DO NOT EXCEED 5 POUNDS PER SQUARE FOOT AND WHERE PARTITIONS ARE NOT CONNECTED TO THE CEILING SYSTEM, THE FOLLOWING BRACING METHODS MAY BE EMPLOYED:
- PROVIDE LATERAL SUPPORT BY FOUR WIRES OF MINIMUM NO. 12 GAUGE SPLAYED IN FOUR DIRECTIONS 90 DEGREES APART, AND CONNECTED TO THE MAIN RUNNER WITHIN 2" OF THE CROSS RUNNER AND TO THE STRUCTURE ABOVE AT AN ANGLE NOT EXCEEDING 45 DEGREES FROM THE PLANE OF THE CEILING. PROVIDE THESE LATERAL SUPPORT POINTS 12 FEET ON CENTER IN EACH DIRECTION, WITH THE FIRST POINT WITHIN 4' FROM EACH WALL.
- ALLOW FOR LATERAL MOVEMENT OF THE SYSTEM. ATTACH MAIN RUNNERS AND CROSS RUNNERS AT TWO ADJACENT WALLS; MAINTAIN CLEARANCE BETWEEN THE WALL AND THE RUNNERS AT THE OTHER TWO WALLS.
- PROVIDE VERTICAL SUPPORT AS REQUIRED IN BUILDING CODES. IN ADDITION, VERTICALLY SUPPORT ENDS OF RUNNERS WITHIN 8" OF DISCONTINUITIES SUCH AS MAY OCCUR WHERE THE CEILING IS INTERRUPTED BY A WALL.
- SUPPORT LIGHT FIXTURES AND AIR DIFFUSERS DIRECTLY BY WIRES TO THE STRUCTURE ABOVE.
- LOCATE REGISTERS AND LIGHTING FIXTURES WITHIN GRID LINES. CENTER SPRINKLER HEADS, SPEAKERS, RECESSED FIXTURES, AND SIMILAR CEILING ELEMENTS IN ACOUSTICAL UNITS, UNLESS OTHERWISE NOTED.
- FINISH HVAC DIFFUSERS, DRAPERY POCKETS, AND SPEAKER GRILLES TO MATCH ADJACENT FINISH, UNLESS OTHERWISE NOTED.

POWER & COMMUNICATION NOTES

- PRIOR TO CORING SLAB, REVIEW LOCATIONS WITH ARCHITECT AND COORDINATE LOCATIONS WITH OWNER.
- COORDINATE INSTALLATION OF TELECOMMUNICATIONS, DATA AND SECURITY SYSTEMS.
- VERIFY EQUIPMENT SPECIFICATIONS, POWER AND INSTALLATION REQUIREMENTS WITH MANUFACTURER TO ENSURE PROPER FIT AND FUNCTION.
- VERIFY MOUNTING REQUIREMENTS OF ELECTRICAL, TELEPHONE AND OTHER EQUIPMENT.
- GANG ADJACENT LIGHT SWITCHES AND COVER WITH A SINGLE PLATE.
- PROVIDE LIGHT SWITCHING IN CONFORMANCE WITH TITLE 24 REQUIREMENTS. FOR ROOMS OR AREAS GREATER THAN 100 SQUARE FEET, PROVIDE DOUBLE SWITCHES WITH EACH SWITCH CONTROLLING 50% OF LAMPS PER FIXTURE.
- MOUNT STANDARD WALL OUTLETS, SWITCHES AND THERMOSTATS AT HEIGHTS REQUIRED BY TITLE 24 AND ADA GUIDELINES, UNLESS OTHERWISE NOTED. WHEN THERMOSTATS AND LIGHT SWITCH OCCUR TOGETHER, INSTALL BOTH ALIGNED HORIZONTALLY WITH CENTER LINE AT +3'-2" ABOVE FINISHED FLOOR.
- INDICATED DIMENSIONS ARE TO THE CENTER LINE OF OUTLET OR SWITCH, OR CLUSTER OF OUTLETS OR SWITCHES, UNLESS OTHERWISE NOTED.
- INSTALL OUTLETS ON OPPOSITE SIDES OF PARTITIONS IN SEPARATE STUD CAVITIES. DO NOT INSTALL BACK-TO-BACK.
- PROVIDE MATCHING COVER PLATES, RECEPTACLES AND RELATED ITEMS. PROVIDE ONE-PIECE TYPE GANG COVER PLATES, UNLESS OTHERWISE NOTED.
- IDENTIFY DEDICATED OR ISOLATED GROUND ELECTRICAL OUTLETS WITH A RED DOT.

FINISH NOTES

- ENSURE SURFACES TO RECEIVE FINISHES ARE CLEAN, TRUE, AND FREE OF IRREGULARITIES. DO NOT PROCEED WITH WORK UNTIL UNSATISFACTORY CONDITIONS HAVE BEEN CORRECTED.
- REPAIR EXISTING SURFACES TO REMAIN AS REQUIRED FOR APPLICATION OF NEW FINISHES.
- PROVIDE STRAIGHT, FLUSH RESILIENT BASE AT CARPETED AREAS, AND COVER, TOP SET RESILIENT BASE AT RESILIENT FLOORING, UNLESS OTHERWISE NOTED.

FIRE DEPARTMENT NOTES

- PROVIDE A PORTABLE FIRE EXTINGUISHER WITH A RATING OF NOT LESS THAN 2-A WITHIN 75 FOOT TRAVEL DISTANCE TO ALL PORTIONS OF THE BUILDING ON EACH FLOOR, AND ADDITIONAL EXTINGUISHERS AS REQUIRED BY FIRE DEPARTMENT FIELD INSPECTOR OR BUILDING DEPARTMENT INSPECTOR.
- PROVIDE EXIT SIGN WITH 6" LETTERS OVER REQUIRED EXITS, WHERE SHOWN ON DRAWINGS, AND ADDITIONAL SIGNS AS REQUIRED BY BUILDING DEPARTMENT INSPECTOR OR FIRE DEPARTMENT FIELD INSPECTOR. CONNECT EXIT SIGNS TO EMERGENCY POWER CIRCUITS. COMPLY WITH BUILDING CODES.
- PROVIDE EMERGENCY LIGHTING OF ONE FOOT-CANDLE AT FLOOR LEVEL. COMPLY WITH BUILDING CODES.
- MAINTAIN AISLES AT LEAST 44" WIDE AT PUBLIC AREAS.
- EVERY EXIT DOOR SHALL BE OPERABLE FROM THE INSIDE WITHOUT THE USE OF A KEY OR ANY SPECIAL KNOWLEDGE OR EFFORT. SPECIAL LOCKING DEVICES SHALL BE OF AN APPROVED TYPE. ALL NEW DOORS SHALL HAVE APPROVED LEVER HANDLES.
- DOORS OPENING INTO REQUIRED 1-HOUR, FIRE-RESISTIVE CORRIDORS SHALL BE PROTECTED WITH A SMOKE OR DRAFT STOP ASSEMBLY HAVING A 20-MINUTE RATING AND SHALL BE SELF-CLOSING.
- 20-MINUTE DOOR JAMBS TO BE TIGHT-FITTING, SMOKE AND DRAFT CONTROLLED.
- EXITS DOORS SHALL SWING IN THE DIRECTION OF TRAVEL WHEN SERVING 50 OR MORE PERSONS AND IN ANY HAZARDOUS AREA.
- INTERIOR WALL AND CEILING FINISHES FOR EXIT CORRIDOR SHALL NOT EXCEED AN END POINT FLAME SPREAD RATING: A. CLASS I, FLAME SPREAD 0-25, SMOKE DENSITY 150, FOR MATERIALS INSTALLED IN VERTICAL EXITS. B. CLASS II, FLAME SPREAD 26-75, SMOKE DENSITY 300, FOR MATERIALS INSTALLED IN HORIZONTAL EXITS. C. CLASS III, FLAME SPREAD 76-200, SMOKE DENSITY 450, FOR MATERIALS INSTALLED IN ANY OTHER LOCATION.
- DECORATIONS (CURTAINS, DRAPES, SHADES, HANGERS, ETC.) SHALL BE NON-COMBUSTIBLE OR BE FLAMEPROOFED IN AN APPROVED MANNER.
- PROVIDE FIRE DAMPERS OR DOORS WHERE AIR DUCTS PENETRATE FIRE-RATED WALLS OR CEILINGS.
- STORAGE, DISPENSING OR USE OF ANY FLAMMABLE OR COMBUSTIBLE LIQUIDS, FLAMMABLE GAS AND HAZARDOUS SUBSTANCES SHALL COMPLY WITH UNIFORM FIRE CODE REGULATIONS.
- WOOD BLOCKING SHALL BE FIRE TREATED IN ACCORDANCE WITH APPLICABLE CODE REQUIREMENTS.
- EXTEND OR MODIFY EXISTING FIRE/LIFE SAFETY SYSTEM AS REQUIRED TO PROVIDE AN APPROVED FIRE/LIFE SAFETY SYSTEM. SUBMIT PLANS TO FIRE DEPARTMENT WITH COMPLETE DESCRIPTION OF SEQUENCE OF OPERATION, AND OBTAIN APPROVAL PRIOR TO INSTALLATION.
- LOCATE THE CENTER OF FIRE ALARM INITIATING DEVICES 48" ABOVE THE LEVEL OF THE FLOOR, WORKING PLATFORM, GROUND SURFACE OR SIDEWALK.
- EMERGENCY WARNING SYSTEMS SHALL ACTIVATE A MEANS OF WARNING THE HEARING IMPAIRED. FLASHING VISUAL WARNING SHALL HAVE A FREQUENCY OF NOT MORE THAN 60 FLASHES PER MINUTE.
- EXTEND OR MODIFY EXISTING AUTOMATIC FIRE EXTINGUISHING SYSTEM AS REQUIRED TO PROVIDE AN APPROVED AUTOMATIC FIRE EXTINGUISHING SYSTEM. SUBMIT PLANS TO FIRE DEPARTMENT AND OBTAIN APPROVAL PRIOR TO INSTALLATION.
- AUTOMATIC SPRINKLER SYSTEMS SHALL BE SUPERVISED BY AN APPROVED CENTRAL, PROPRIETARY OR REMOTE STATION SERVICE OR A LOCAL ALARM WHICH WILL GIVE AN AUDIBLE SIGNAL AT A CONSTANTLY ATTENDED LOCATION.

DEMOLITION NOTES

- COMPLY WITH APPLICABLE LOCAL, STATE AND FEDERAL CODES AND REGULATIONS PERTAINING TO SAFETY OF PERSONS, PROPERTY AND ENVIRONMENTAL PROTECTION.
- PROVIDE AND MAINTAIN BARRICADES, LIGHTING, AND GUARDRAILS AS REQUIRED BY APPLICABLE CODES AND REGULATIONS TO PROTECT OCCUPANTS OF BUILDING AND WORKERS.
- ERECT AND MAINTAIN DUSTPROOF PARTITIONS AS REQUIRED TO PREVENT SPREAD OF DUST, FUMES, AND SMOKE, ETC. TO OTHER PARTS OF THE BUILDING. ON COMPLETION, REMOVE PARTITIONS AND REPAIR DAMAGED SURFACES TO MATCH ADJACENT SURFACES.
- IF DEMOLITION IS PERFORMED IN EXCESS OF THAT REQUIRED, RESTORE EFFECTED AREAS AT NO COST TO THE OWNER.
- REMOVE FROM SITE DAILY AND LEGALLY DISPOSE OF REFUSE, DEBRIS, RUBBISH, AND OTHER MATERIALS RESULTING FROM DEMOLITION OPERATIONS.
- REMOVE DESIGNATED PARTITIONS, COMPONENTS, BUILDING EQUIPMENT, AND FIXTURES AS REQUIRED FOR NEW WORK.
- REMOVE ABANDONED HVAC EQUIPMENT, INCLUDING DUCT WORK.
- REMOVE ABANDONED ELECTRICAL, TELEPHONE AND DATA CABLING AND DEVICES, UNLESS OTHERWISE NOTED.
- REMOVE EXISTING FLOOR FINISHES AND PREPARE SUBFLOOR AS REQUIRED FOR NEW FLOOR FINISHES.

ABBREVIATIONS (CONT)

R	T
RDR READER	T&G TONGUE AND GROOVE
RECES RECESSED	THK THICK
RECPT RECEPTACLE	TLT TOILET
REF REFERENCE	TRAF TRAFFIC
REFL REFLECTED	TRANS TRANSPARENT
REFR REFRIGERATOR	TRTD TREATED
REINF REINFORCE(D)(ING)(MENT)	TYP TYPICAL
REQD REQUIRED	
RESIL RESILIENT	U
RESIS RESIST(ANT)(IVE)	UNDRLAY UNDERLAYMENT
RFG ROOFING	UNO UNLESS NOTED OTHERWISE
RM ROOM	UTIL UTILITY
RO ROUGH OPENING	
	V
	VEH VEHICLE
S	VERT VERTICAL
SCR SCRIBE	VIF VERIFY IN FIELD
SECUR SECURITY	
SF SQUARE FEET	W
SGL SINGLE	W WITH
SHORG SHORING	WO WITHOUT
SIM SIMILAR	WC WATER CLOSET
SST STAINLESS STEEL	WD WOOD
STD STANDARD	WDW WINDOW
STL STEEL	WT WEIGHT
STRFR STOREFRONT	WTRPRF WATERPROOFING
STRUCT STRUCTURAL	
SURF SURFACE	
SUSP SUSPENDED	
SYS SYSTEM(S)	

GENERAL NOTES

- COMPLY WITH CODES, LAWS, ORDINANCES, RULES, AND REGULATIONS OF PUBLIC AUTHORITIES GOVERNING THE WORK.
- OBTAIN AND PAY FOR PERMITS AND INSPECTIONS REQUIRED BY PUBLIC AUTHORITIES GOVERNING THE WORK.
- REVIEW DOCUMENTS, VERIFY DIMENSIONS AND FIELD CONDITIONS AND CONFIRM THAT WORK IS BUILDABLE AS SHOWN. REPORT ANY CONFLICTS OR OMISSIONS TO THE ARCHITECT FOR CLARIFICATION PRIOR TO PERFORMING ANY WORK IN QUESTION.
- SUBMIT REQUESTS FOR SUBSTITUTIONS, REVISIONS, OR CHANGES TO ARCHITECT FOR REVIEW PRIOR TO PURCHASE, FABRICATION OR INSTALLATION.
- COORDINATE WORK WITH THE OWNER, INCLUDING SCHEDULING TIME AND LOCATIONS FOR DELIVERIES, BUILDING ACCESS, USE OF BUILDING SERVICES AND FACILITIES, AND USE OF ELEVATORS. MINIMIZE DISTURBANCE OF BUILDING FUNCTIONS AND OCCUPANTS.
- OWNER WILL PROVIDE WORK NOTED "BY OTHERS" OR "NIC" UNDER SEPARATE CONTRACT. INCLUDE SCHEDULE REQUIREMENTS IN CONSTRUCTION PROGRESS SCHEDULE AND COORDINATE TO ASSURE ORDERLY SEQUENCE OF INSTALLATION.
- COORDINATE TELECOMMUNICATIONS, DATA AND SECURITY SYSTEM INSTALLATIONS.
- MAINTAIN EXITS, EXIT LIGHTING, FIRE PROTECTIVE DEVICES, AND ALARMS IN CONFORMANCE WITH CODES AND ORDINANCES.
- PROTECT AREA OF WORK AND ADJACENT AREAS FROM DAMAGE.
- MAINTAIN WORK AREAS SECURE AND LOCKABLE DURING CONSTRUCTION. COORDINATE WITH TENANT AND LANDLORD TO ENSURE SECURITY.
- DO NOT SCALE DRAWINGS. WRITTEN DIMENSIONS GOVERN. IN CASE OF CONFLICT, CONSULT THE ARCHITECT.
- PARTITIONS ARE DIMENSIONED FROM FINISH FACE TO FINISH FACE, UNLESS OTHERWISE NOTED. MAINTAIN DIMENSIONS MARKED "CLEAR". ALLOW FOR THICKNESS OF FINISHES.
- COORDINATE AND PROVIDE BACKING FOR MILLWORK AND ITEMS ATTACHED OR MOUNTED TO WALLS OR CEILINGS.
- WHERE EXISTING ACCESS PANELS CONFLICT WITH CONSTRUCTION, RELOCATE PANELS TO ALIGN WITH AND FIT WITHIN NEW CONSTRUCTION.
- UNDERCUT DOORS TO CLEAR TOP OF FLOOR FINISHES BY 1/4 INCH, UNLESS OTHERWISE NOTED.

ABBREVIATIONS

A	G
ACCES ACCESSORY	GA GAUGE
ACOUS ACOUSTIC(AL)	GFRG GLASS FIBER REINFORCED CONCRETE
AFF ABOVE FINISHED FLOOR	GFRG GLASS FIBER REINFORCED GYPSUM
AL ALUMINUM	GFRP GLASS FIBER REINFORCED PLASTER
ALT ALTERNATE	GL GLASS
ANNUNC ANNUNCIATOR	GR GRADIE(ING)
ANOD ANODIZED	GYP GYPSUM
APPL APPLIANCE	
ARCH ARCHITECTURAL	H
AUTO AUTOMATIC	HD HEAD
AVG AVERAGE	HDWD HARDWOOD
£ AND	HQWE HARDWARE
	HM HOLLOW METAL
B	HORIZ HORIZONTAL
BD BOARD	HVAC HEATING, VENTILATING, AND AIR CONDITIONING
BLDG BUILDING	
BLKG BLOCKING	I
BOLL BOLLARD	INFILTR INFILTRATION
BRLDM BOARDROOM	INFO INFORMATION
BU BUILT UP	INSTRUM INSTRUMENT(ATION)
	INSUL INSULATION
C	INT INTERIOR
CAB CABINET	INTLK INTERLOCK(ING)
CEM CEMENT(ITIOUS)	
CER CERAMIC	J
CLG CEILING	JAN JANITOR
CMU CONCRETE MASONRY UNIT	
COATG COATING	K
COILG COILING	KIT KITCHEN
CONC CONCRETE	
CONSTR CONSTRUCTION	L
CONT CONTINUOUS(ATION)	LAV LAVATORY
CONTR CONTRACT(OR)	LB POUND
COV COVER	LT LIGHT
CPT CARPET	£ BRITISH POUND (CURRENCY)
	LVLG LEVELING
D	LVR LOUVER
DBL DOUBLE	
DEPT DEPARTMENT	M
DES DESIGN(ED)	MAX MAXIMUM
DET DETAIL	MECH MECHANICAL
DF DRINKING FOUNTAIN	MEMB MEMBRANE
DIA DIAMETER	MET METAL
DIFF DIFFUSER	MEZZ MEZZANINE
DIM DIMENSION	MFD MANUFACTURED
DISP DISPENSER	MFR MANUFACTURER
DIV DIVISION	MIN MINIMUM
DN DOWN	MISC MISCELLANEOUS
\$ DOLLARS	MILWK MILLWORK
DR DOOR	MOIST MOISTURE
DSCON DISCONNECT	MOTR(MORIZED)
DWR DRAWER	MTD MOUNTED
E	N
ELAST ELASTOMRIC	NIC NOT IN CONTRACT
ELEC ELECTRICAL	NO NUMBER
EMBED EMBEDD(ED)(ING)	NTS NOT TO SCALE
ENGR ENGINEER(ED)	
ENTR ENTRANCE	O
EQ EQUAL	OPNG OPENING(S)
EQUIP EQUIPMENT	OPR OPERABLE
EXIST EXISTING	ORNA ORNAMENTAL
EXP JT EXPANSION JOINT	OVFL OVERFLOW
EXPOS EXPOSE(D)	OVHD OVERHEAD
EXT EXTERIOR	
	P
F	PBD PARTICLE BOARD
FAB FABRICATION	PEDTR PEDESTRIAN
FD FLOOR DRAIN	PLAM PLASTIC LAMINATE
FE FIRE EXTINGUISHER	PLAS PLASTER
FEC FIRE EXTINGUISHER AND CABINET	PLSTC PLASTIC
	PLYWD PLYWOOD
FHC FIRE HOSE CABINET	PNL PANEL
FIN FINISH	POLYST POLYSTYRENE
FLDG FOLDING	PORT PORTABLE
FLR FLOORING	PREFAB PREFABRICATED
FPFC FIREPLACE	PREFIN PREFINISHED
FR FIRE RAT(ING)(ED)	PRTECN PROTECTION
FRMG FRAMING	PTN PARTITION
FURN FURNITURE	
FWC FABRIC WALL COVERING	
FXD FIXED	
FXTR FIXTURE	

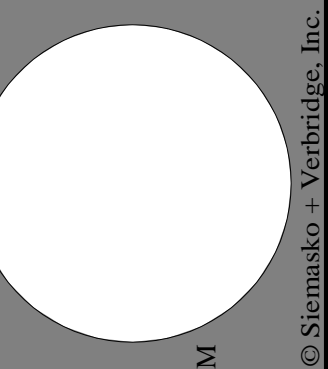
Proposed Renovations
NFI for The Town of Arlington
 23 Maple Street
 Arlington MA 01915

Siemasko + Verbridge
 Architecture
 Interior Design
 Landscape Design
 Decorating
 f 978.927.6565
 f 978.927.3745
 www.svdesign.com
 Beverly, Massachusetts 01915

Project Name: NFI - Arlington
 Description: ABBREVIATIONS/GENERAL NOTES
 Scale: 1/1
 Date: 07/28/2017
 Drawn by: Author
 Checked by: Checker
 Plot Date: 07/28/2017 9:29:26 AM
 Project #: Project Number

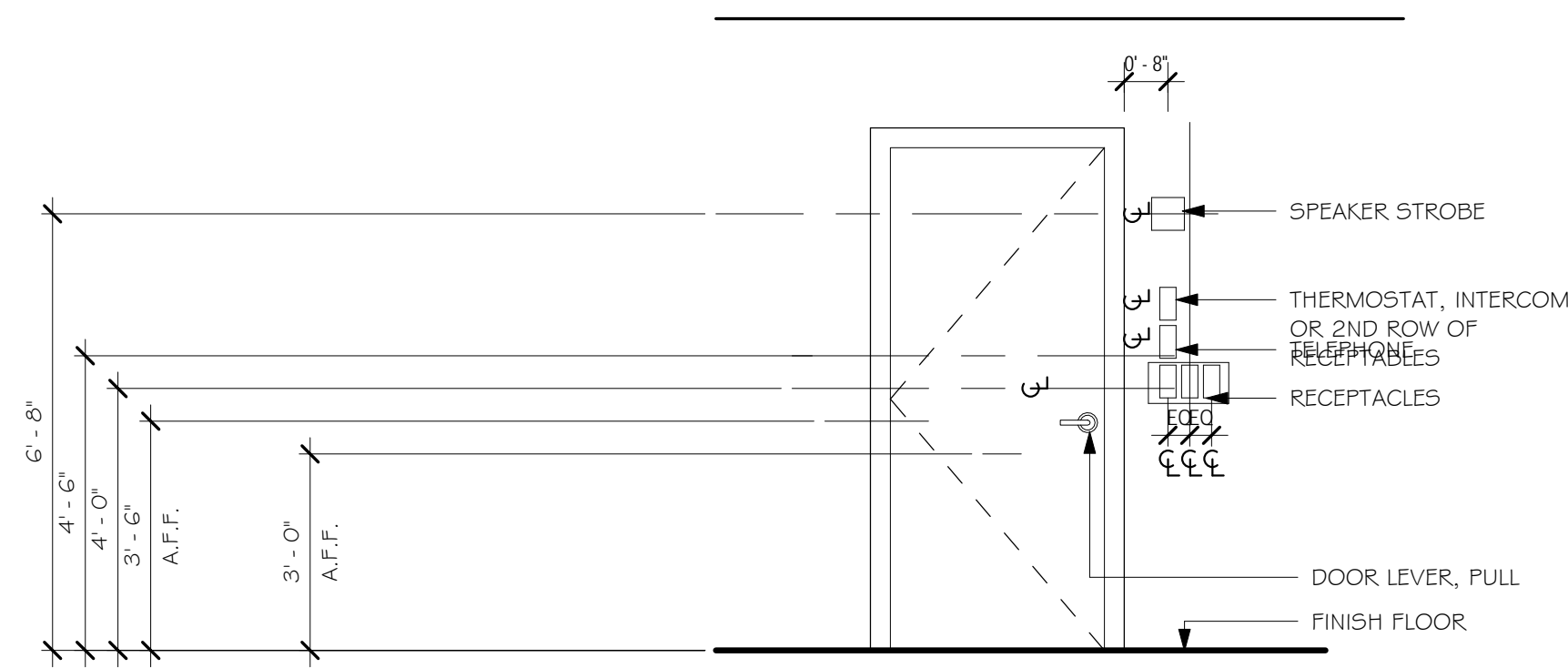
Revisions
 Issue Date & Issue Description
 1
 1

Issued for Bid/Permit
 07/28/2017
 Check By

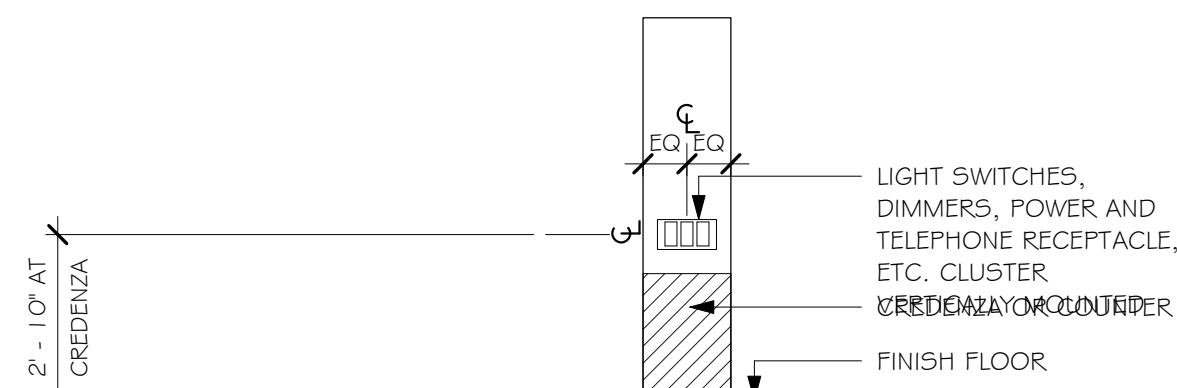


A0.03
 ABBREVIATIONS/GENERAL NOTES

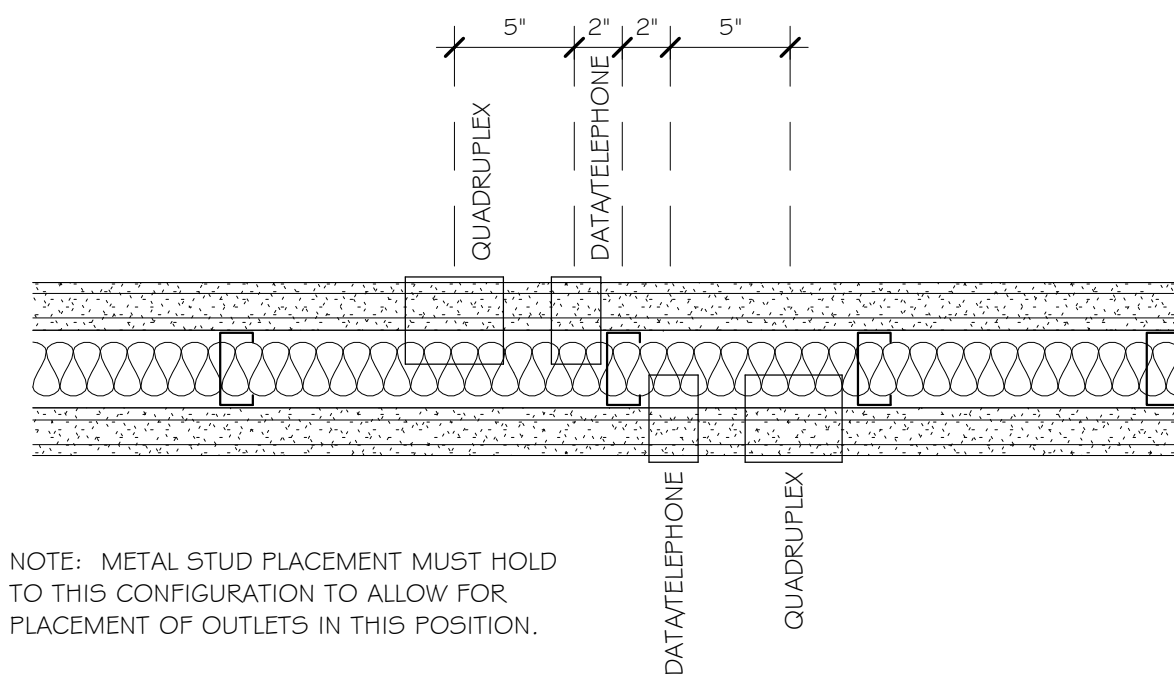
TYPICAL MOUNTING HEIGHTS



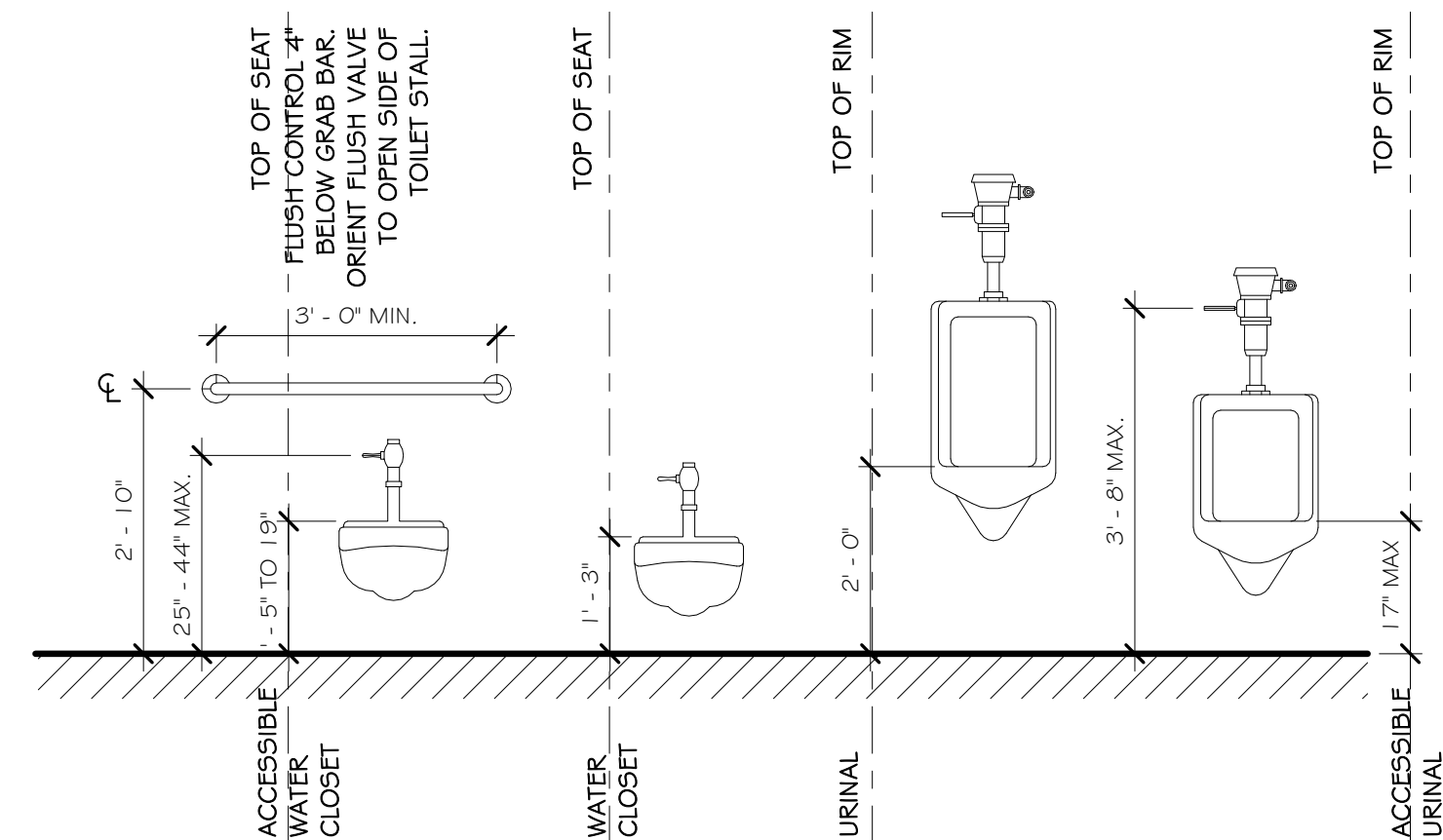
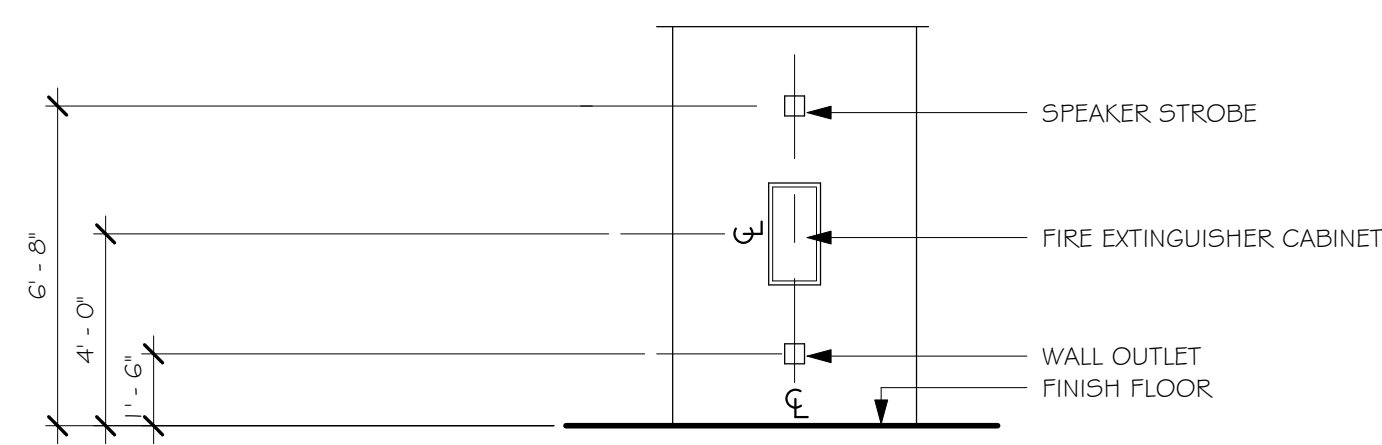
NOTE: COORDINATE LOCATION OF OUTLETS WITH FINISH WALL PANEL JOINTS BEFORE SETTING OUTLETS IN GYPSUM BOARD/METAL STUD PARTITION



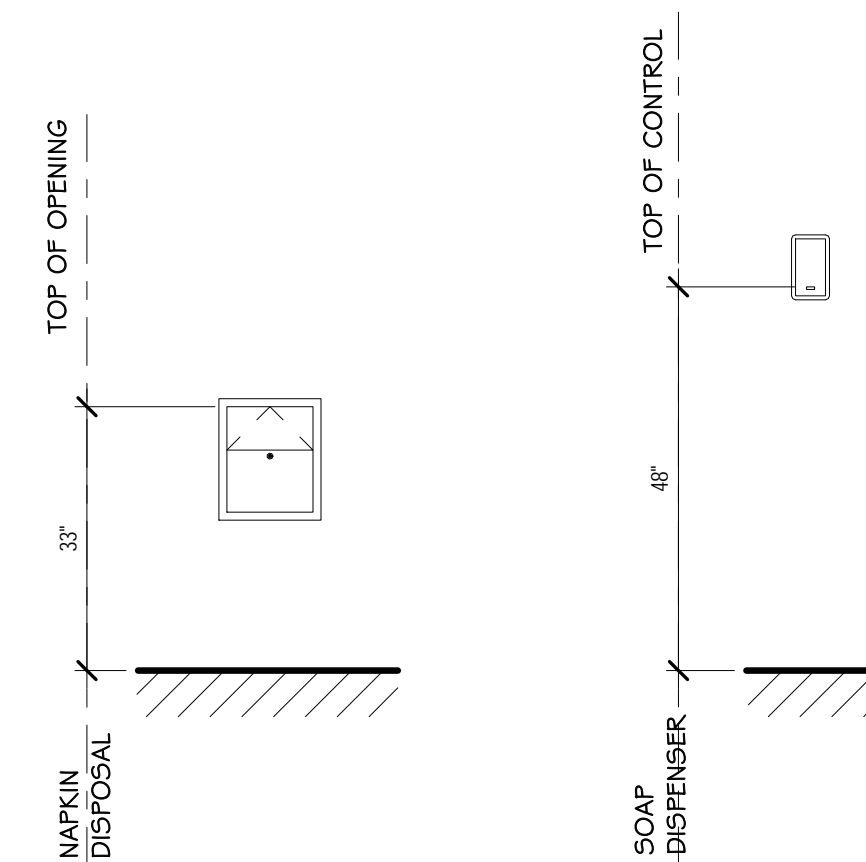
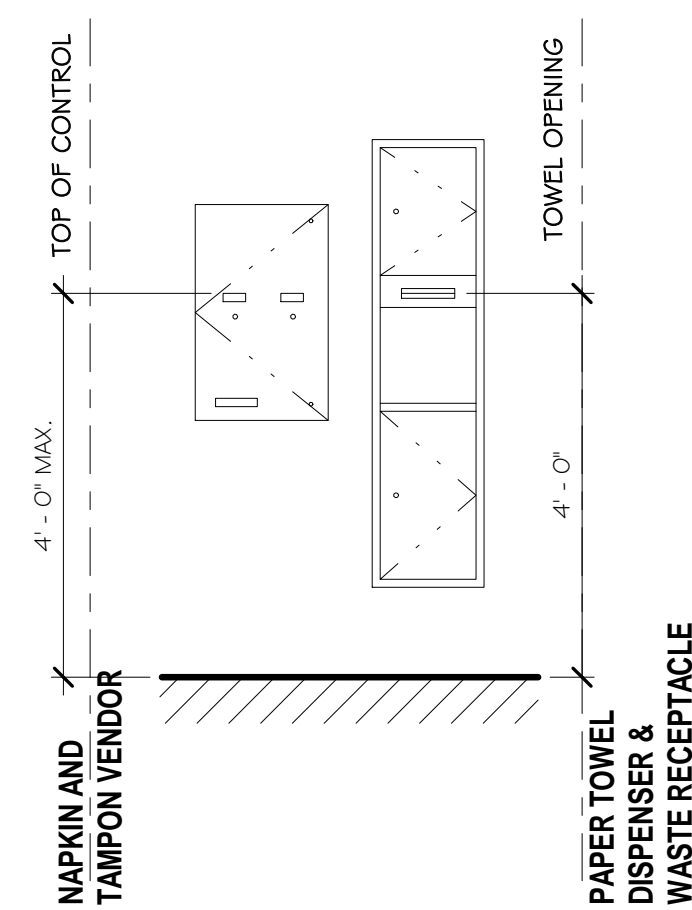
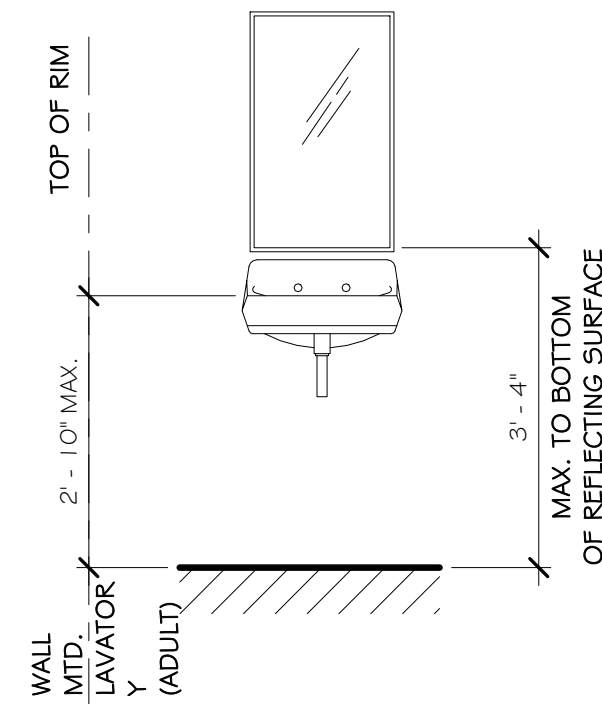
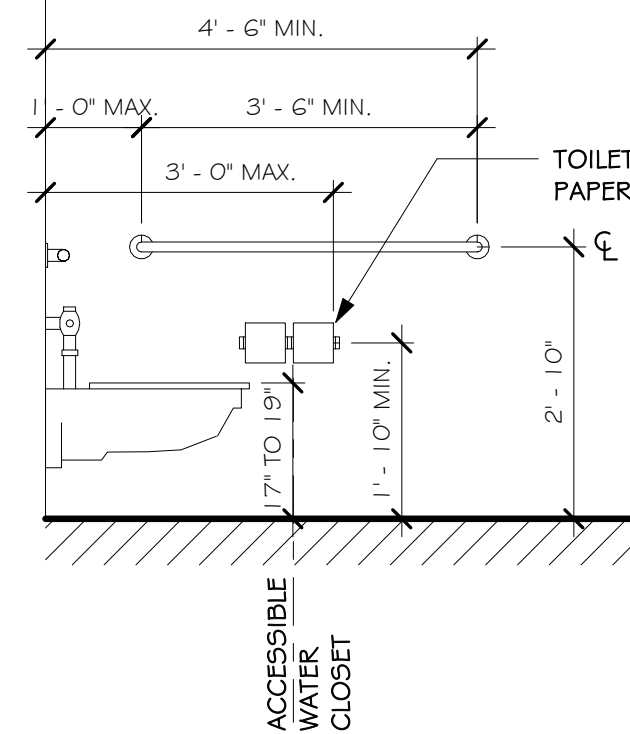
NOTE: GC TO VERIFY WITH MILLWORK/FURNITURE HEIGHT PRIOR TO INSTALLATION



NOTE: METAL STUD PLACEMENT MUST HOLD TO THIS CONFIGURATION TO ALLOW FOR PLACEMENT OF OUTLETS IN THIS POSITION.



TYPICAL MOUNTING HEIGHTS



DISABLED ACCESS NOTES (CONT)

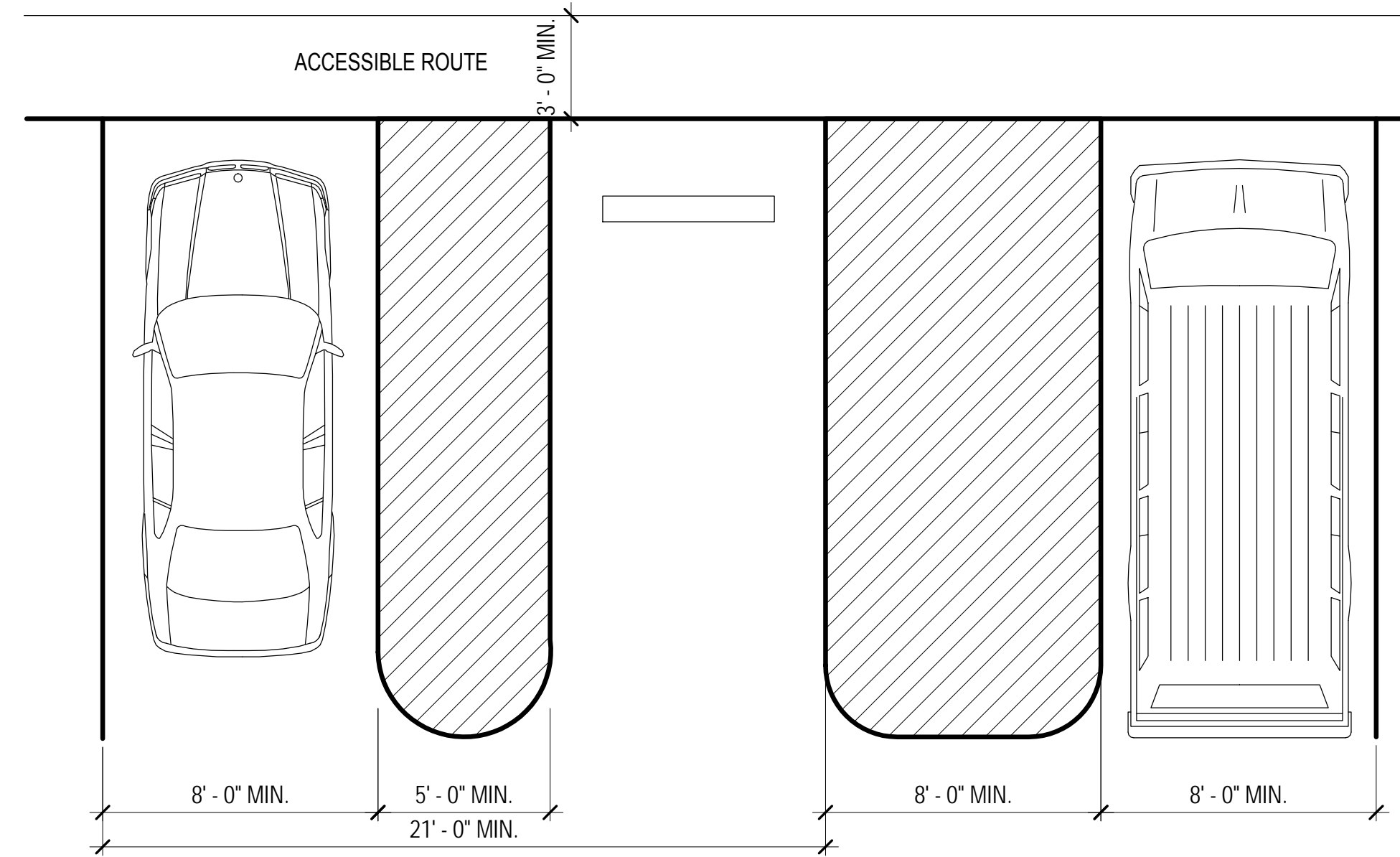
- MOUNT BOTTOM EDGE MIRRORS NO HIGHER THAN 40" FROM THE FLOOR.
- MOUNT TOILET TISSUE DISPENSERS WITHIN 12" FROM THE FRONT EDGE OF THE TOILET SEAT.
- MOUNT DISPENSING AND DISPOSAL FIXTURES (TOWEL, SANITARY NAPKINS, WASTE, COIN SLOTS, ETC.) WITH OPERATING PARTS NO HIGHER THAN 40" FROM THE FLOOR.
- 19 SINGLE ACCOMMODATION TOILET FACILITY
WATER CLOSET TO HAVE A 28" CLEARANCE FROM A FIXTURE AND 32" FROM A WALL.
MINIMUM CLEAR SPACE IN FRONT OF WATER CLOSET TO BE 48". A SPACE 36" X 48" IS PERMITTED IN FRONT OF EXISTING WATER CLOSET ACCESSIBLE TO THE HANDICAPPED.
- 20 THE HEIGHT OF THE WATER CLOSET (TOP OF SEAT) SHALL BE BETWEEN 17" AND 19".
- 21 MOUNT FLUSH VALVE CONTROL NO MORE THAN 44" ABOVE THE FLOOR, ON THE SIDE OF THE TOILET WITH THE GREATEST SEPARATION FROM ADJACENT WALL OR OTHER SURFACE.
- 22 PROVIDE GRAB BARS ON EACH SIDE, OR ONE SIDE AND BACK OF WATER CLOSET.
PROVIDE GRAB BARS ON EACH SIDE, OR ONE SIDE AND BACK OF WATER CLOSET.
SIDE BARS TO BE 42" LONG AND PROJECT 24" IN FRONT OF WATER CLOSET STOOL. GRAB BAR AT BACK TO BE 36" LONG. DIAMETER OF GRAB BARS TO BE 1-1/4" TO 1-1/2". PROVIDE 1-1/2" CLEARANCE BETWEEN GRAB BARS AND WALL. GRAB BARS (INCLUDING CONNECTORS, FASTENERS, SUPPORT BACKING, ETC.) SHALL SUPPORT A 250 POUND LOAD. GRAB BARS SHALL NOT ROTATE WITHIN THEIR FITTINGS. GRAB BARS AND ANY ADJACENT SURFACE SHALL BE FREE OF SHARP OR ABRASIVE ELEMENTS. EDGES SHALL HAVE A MINIMUM RADIUS OF 1/8".
- 23 PROVIDE A CLEAR FLOOR SPACE 30" X 48" IN FRONT OF LAVATORY TO PERMIT A FORWARD APPROACH.
- 24 MOUNT LAVATORIES WITH A MINIMUM CLEARANCE OF 29" FROM THE FLOOR TO THE BOTTOM OF THE APRON. PROVIDE KNEE CLEARANCE UNDER THE FRONT LIP EXTENDING A MINIMUM OF 30" IN WIDTH WITH 8" MINIMUM WIDTH, AND SHALL BE A MINIMUM OF 9" HIGH FROM THE FLOOR A MINIMUM OF 17" DEEP FROM THE FRONT OF THE LAVATORY.
- 25 FAUCET CONTROLS AND OPERATING MECHANISMS SHALL BE OPERABLE WITH ONE HAND AND SHALL NOT REQUIRE TIGHT GRASPING, PINCHING OR TWISTING OF THE WRIST. THE FORCE REQUIRED TO ACTIVATE CONTROLS SHALL BE NO GREATER THAN 5 POUNDS. LEVER OPERATED, PUSH TYPE AND ELECTRONICALLY CONTROLLED MECHANISMS ARE EXAMPLES OF ACCEPTABLE DESIGNS. SELF CLOSING ARE ALLOWED IF THE FAUCET REMAINS OPEN FOR AT LEAST 10 SECONDS.
- 26 INSULATE OR OTHERWISE COVER HOT WATER AND DRAIN PIPES UNDER LAVATORIES.
- 27 THERE SHALL BE NO SHARP OR ABRASIVE SURFACES UNDER LAVATORIES.

HAZARDOUS MATERIALS

- 1 IN THE EVENT OF ASBESTOS OR OTHER TOXIC SUBSTANCE EXPOSURE OR THE SUBSTANTIAL RISK THEREOF, CLIENT WILL HAVE THE DUTY TO INFORM THE ARCHITECT OF SUCH RISKS KNOWN OR REASONABLY KNOWN TO CLIENT.
- 2 IF ASBESTOS OR ANY OTHER TOXIC SUBSTANCE, OR RISK TO EXPOSURE THERETO IS DISCOVERED BY ARCHITECT DURING WORK ON THE PROJECT, ARCHITECT SHALL IN ITS SOLE DISCRETION, HAVE THE RIGHT TO SUSPEND WORK ON THE PROJECT.
- 3 CLIENT SHALL HAVE THE DUTY TO PROMPTLY RETAIN A QUALIFIED EXPERT SAFELY TO REMOVE OR SUPERVISE THE REMOVAL OF SUCH ASBESTOS OR OTHER TOXIC SUBSTANCE.
- 4 CLIENT SHALL INDEMNIFY AND HOLD ARCHITECT, ITS AFFILIATES AND SUBCONTRACTORS AND THEIR OFFICERS, AGENTS AND EMPLOYEES HARMLESS FROM ANY AND ALL LIABILITY ON THE PART OF OR DAMAGE TO SUCH FEES AND EXPENSES ARE INCLUDED, WHICH MAY RESULT IN ASBESTOS OR OTHER TOXIC SUBSTANCE EXPOSURE ON THE PROJECT.

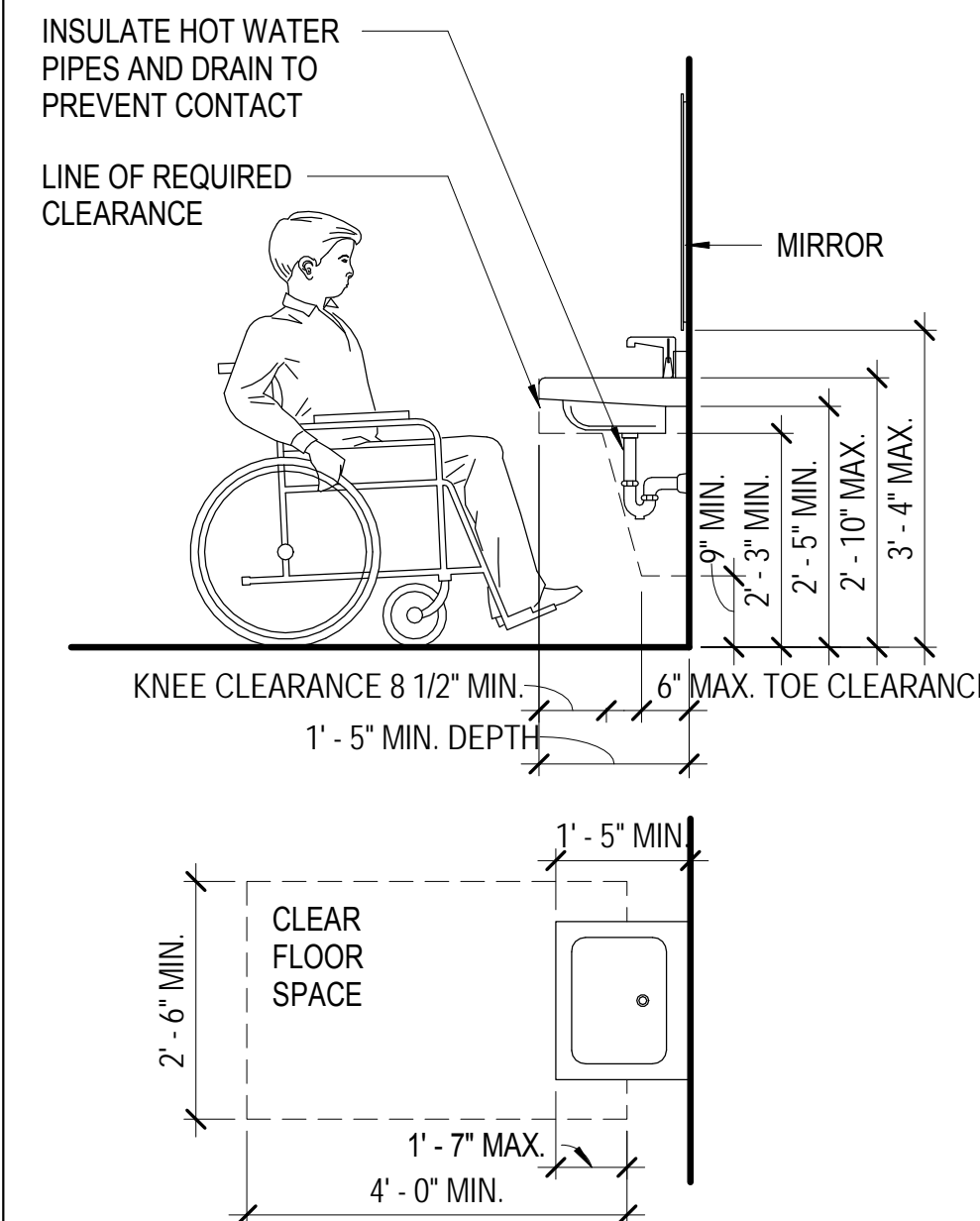
DISABLED ACCESS NOTES

- 1 IN BUILDINGS AND FACILITIES, FLOORS OF A GIVEN STORY SHALL BE A COMMON LEVEL THROUGHOUT, OR SHALL BE CONNECTED BY PEDESTRIAN RAMPS, PASSENGER ELEVATORS OR SPECIAL ACCESS LIFTS.
- 2 FLOOR SURFACES SHALL BE SLIP-RESISTANT.
- 3 EVERY CORRIDOR AND AISLE SERVING AN OCCUPANT LOAD OF 10 OR MORE SHALL BE NOT LESS THAN 44" IN WIDTH.
- 4 ABRUPT CHANGES IN LEVEL ALONG ANY ACCESSIBLE ROUTE SHALL NOT EXCEED 1/2" IN HEIGHT. LEVEL CHANGES NOT EXCEEDING 1/4" MAY BE VERTICAL. LEVEL OTHERS WITH A SLOPE NO GREATER THAN 1:2.
- 5 LATCHING AND LOCKING DOORS THAT ARE HAND ACTIVATED AND WHICH ARE IN A PATH OR TRAVEL SHALL BE OPERABLE WITH A SINGLE EFFORT BY LEVER TYPE HARDWARE, PANIC BARS, PUSH-PULL ACTIVATING BARS, OR OTHER HARDWARE DESIGNED TO PROVIDE PASSAGE WITHOUT REQUIRING THE ABILITY TO GRASP THE OPENING HARDWARE. MOUNT DOOR OPENING HARDWARE BETWEEN 30" AND 44" ABOVE FINISH FLOOR.
- 6 CENTER HAND ACTIVATED DOOR OPENING HARDWARE BETWEEN 30" AND 44" ABOVE THE FLOOR.
- 7 MAXIMUM PULL OR PUSH EFFORT TO OPERATE DOORS SHALL NOT EXCEED 8.5 POUNDS FOR EXTERIOR DOORS AND 5 POUNDS FOR INTERIOR DOORS, MEASURED AT RIGHT ANGLES TO HINGED DOORS AND AT CENTER PLANE OF SLIDING OR FOLDING DOORS. CORRESPONDING DEVICES OR AUTOMATIC DOOR OPERATORS MAY BE UTILIZED TO MEET THE ABOVE STANDARDS. MAXIMUM EFFORT TO OPERATE REQUIRED FIRE DOORS MAY BE INCREASED NOT TO EXCEED 15 POUNDS.
- 8 THE BOTTOM 10" OF ALL DOORS (EXCEPT SLIDING AND AUTOMATIC) SHALL HAVE A SMOOTH UNINTERRUPTED SURFACE TO ALLOW THE DOOR TO BE OPENED BY A WHEELCHAIR FOOTREST WITHOUT CREATING A TRAP OR HAZARDOUS CONDITION. PROVIDE A 10" HIGH SMOOTH PANEL ON THE PUSH SIDE OF NARROW FRAME DOORS.
- 9 EVERY REQUIRED ENTRANCE OR PASSAGE DOORWAY SHALL BE NOT LESS THAN 3' IN WIDTH AND NOT LESS THAN 6'-8" IN HEIGHT. DOORS SHALL BE CAPABLE OF OPENING AT LEAST 90 DEGREES AND SHALL BE SO MOUNTED THAT THE CLEAR WIDTH OF THE DOORWAY IS NOT LESS THAN 32".
- 10 WHERE A PAIR OF DOORS IS UTILIZED, AT LEAST ONE OF THE DOORS SHALL PROVIDE A CLEAR, UNOBSTRUCTED OPENING WIDTH OF 32" WITH THE LEAF POSITIONED AT AN ANGLE OF 90 DEGREES FROM ITS CLOSED POSITION.
- 11 IDENTIFY ACCESSIBLE ENTRANCES WITH AT LEAST ONE STANDARD SIGN AND WITH ADDITIONAL DIRECTIONAL SIGNS, AS REQUIRED, VISIBLE FROM APPROACHING PEDESTRIAN WAYS.
- 12 THE FLOOR OR LANDING ON EACH SIDE OF AN ENTRANCE OR PASSAGE DOOR SHALL BE LEVEL AND CLEAR. THE LEVEL AND CLEAR AREA SHALL HAVE A LENGTH IN THE DIRECTION OF DOOR SWING OF AT LEAST 60" AND THE LENGTH OPPOSITE THE DIRECTION OF DOOR SWING OF 44" AS MEASURED AT RIGHT ANGLES TO THE PLANE OF THE DOOR IN ITS CLOSED POSITION.
- 13 FLOORS OR LANDINGS SHALL BE NOT MORE THAN 1/2" LOWER THAN THE THRESHOLD OF THE DOORWAY. CHANGE IN LEVEL BETWEEN 1/4" AND 1/2" SHALL BE BEVELED WITH A SLOPE NO GREATER THAN 1:2.
- 14 TO ALERT THE VISUALLY IMPAIRED, MARK THE UPPER APPROACH AND THE LOWER TREAD OF EACH INTERIOR STAIR WITH A STRIP OF CLEARLY CONTRASTING COLOR AT LEAST 2" WIDE, PLACED PARALLEL TO AND NOT MORE THAN 1" FROM THE NOSE OF THE STEP OR LANDING. THE STRIP SHALL BE OF A MATERIAL THAT IS AT LEAST AS SLIP RESISTANT AS THE OTHER TREADS OF THE STAIR.
- 15 CENTER ELECTRICAL RECEPTACLE OUTLETS NOT LESS THAN 15" ABOVE THE FLOOR OR WORKING PLATFORM.
- 16 SANITARY FACILITIES LOCATED ON AN ACCESSIBLE FLOOR OF A BUILDING SHALL BE ACCESSIBLE TO THE PHYSICALLY HANDICAPPED.
- 17 ENTRY TO SANITARY FACILITIES
A 44" CLEAR AISLE OR CORRIDORS WHERE OCCUPANT LOAD IS 10 OR MORE.
DOORWAYS TO HAVE A 32" CLEAR OPENING.
ON APPROACH AND 44" SPACE WHEN DOOR SWINGS AWAY FROM APPROACH.
- 18 TOILET ROOM ACCESSORIES



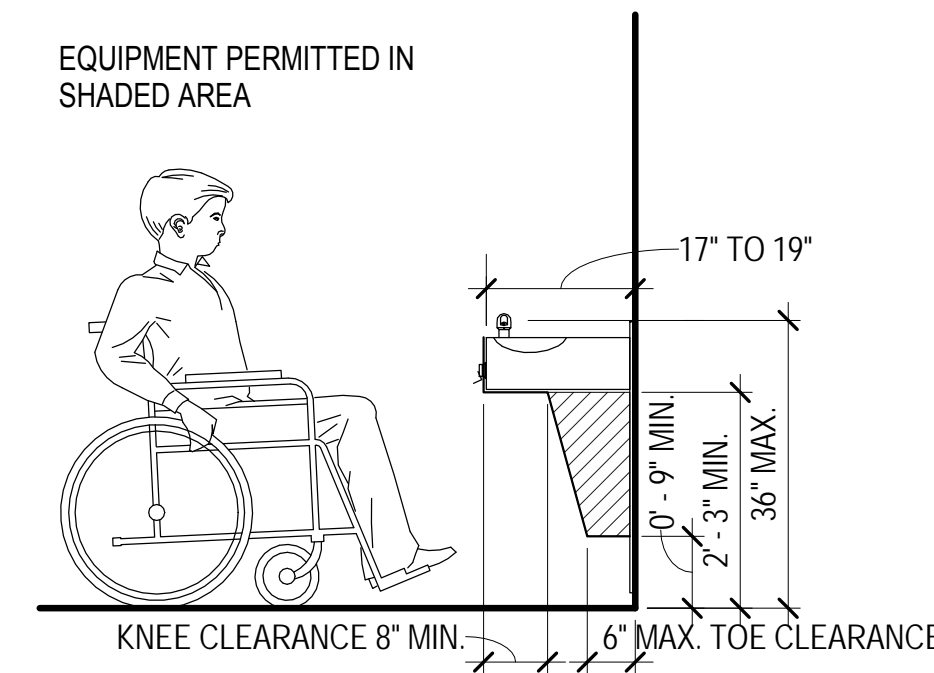
PARKING
SCALE: 1/4" = 1'-0"

10



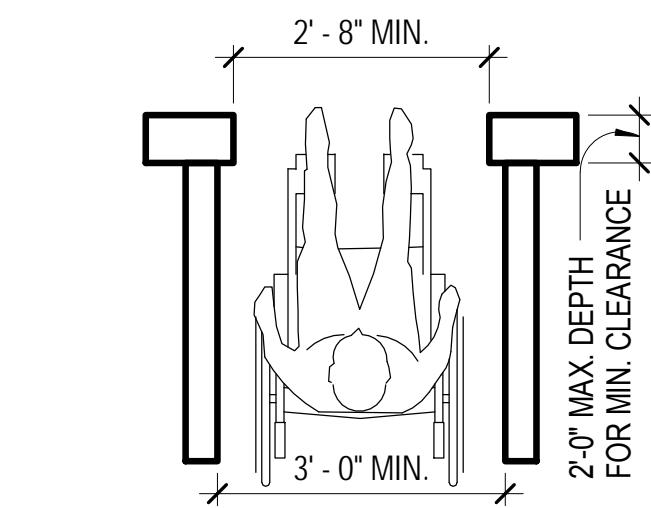
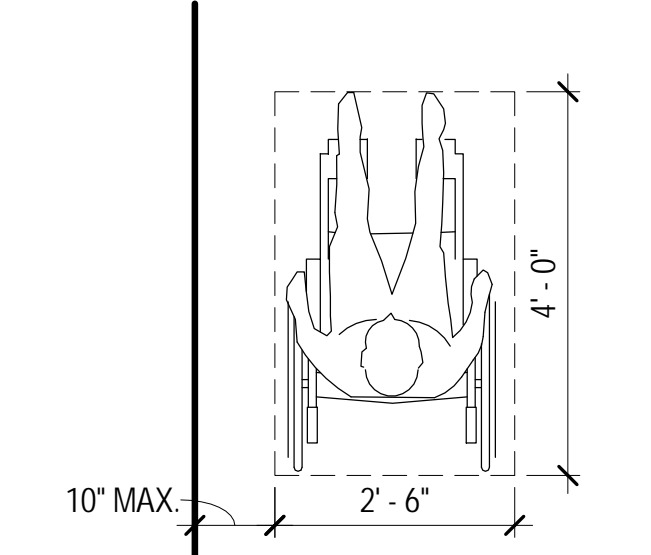
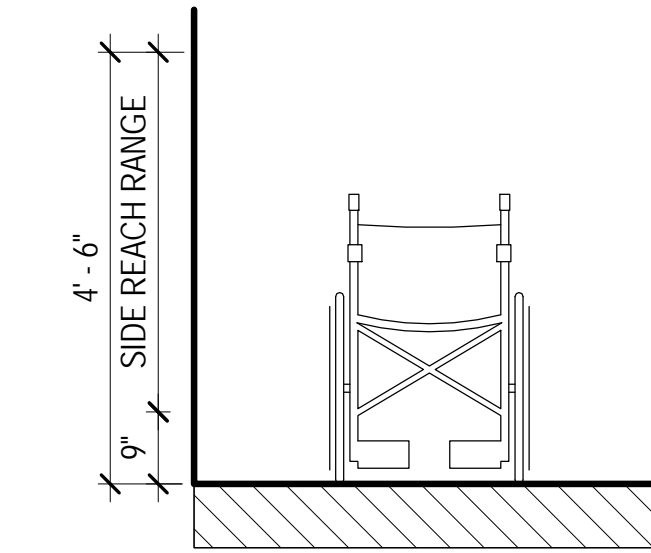
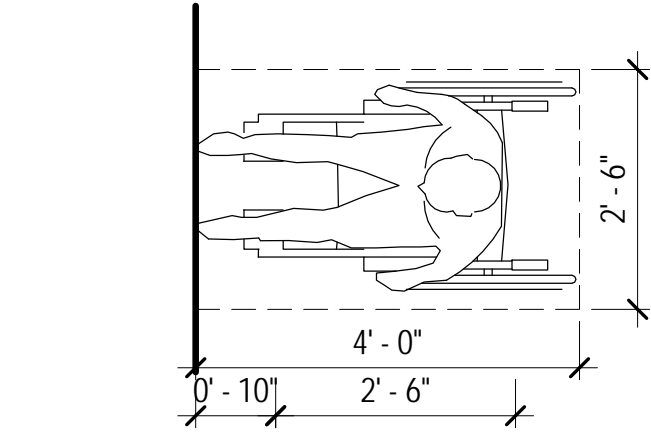
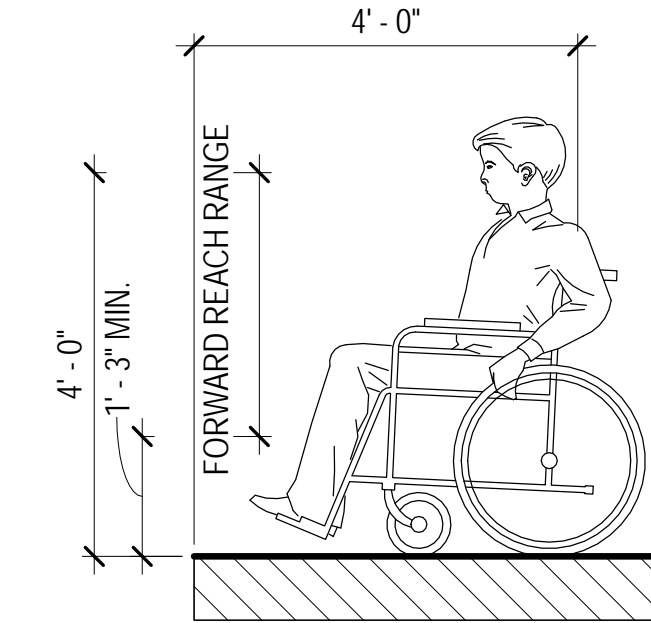
SINK OR VANITY
SCALE: 1/2" = 1'-0"

7



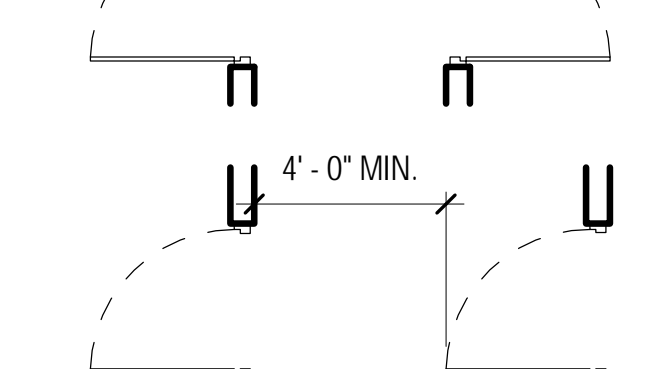
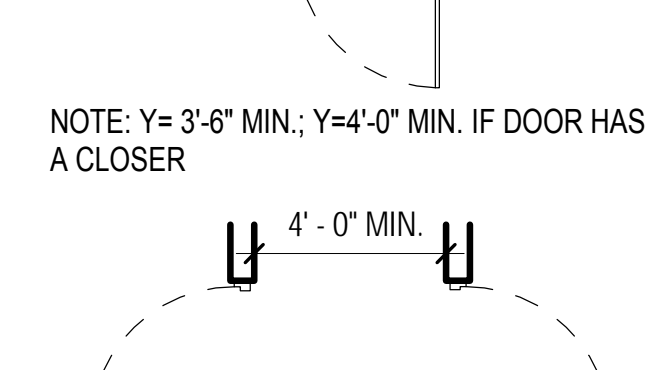
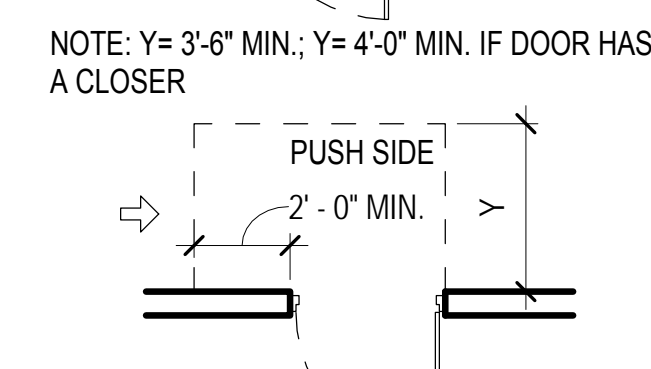
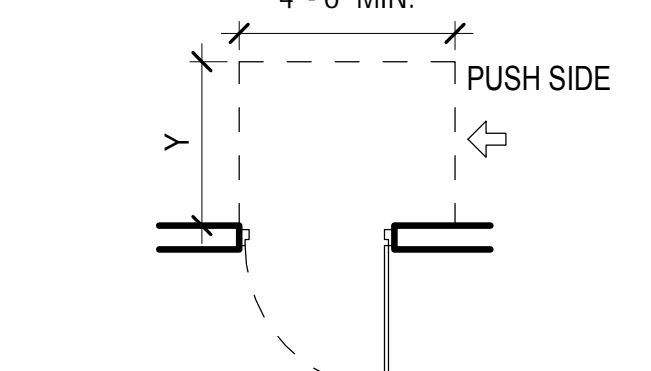
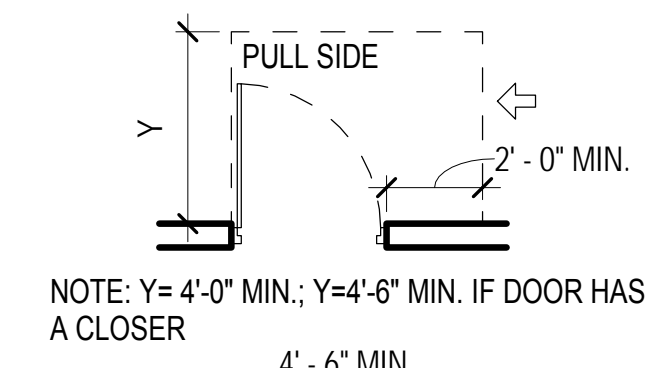
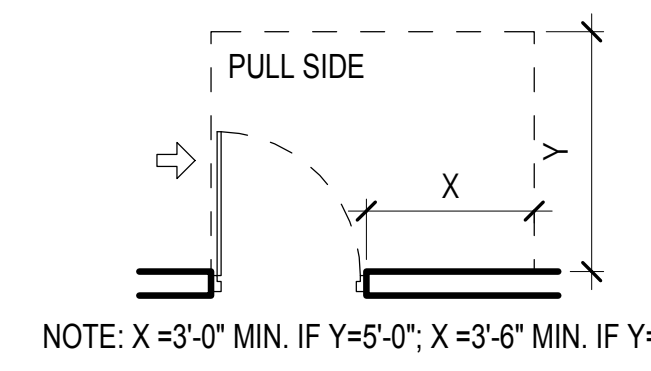
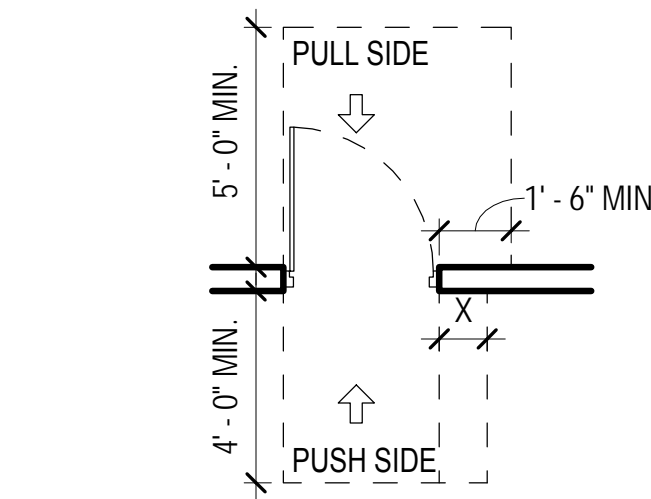
DRINKING FOUNTAIN
SCALE: 1/2" = 1'-0"

8



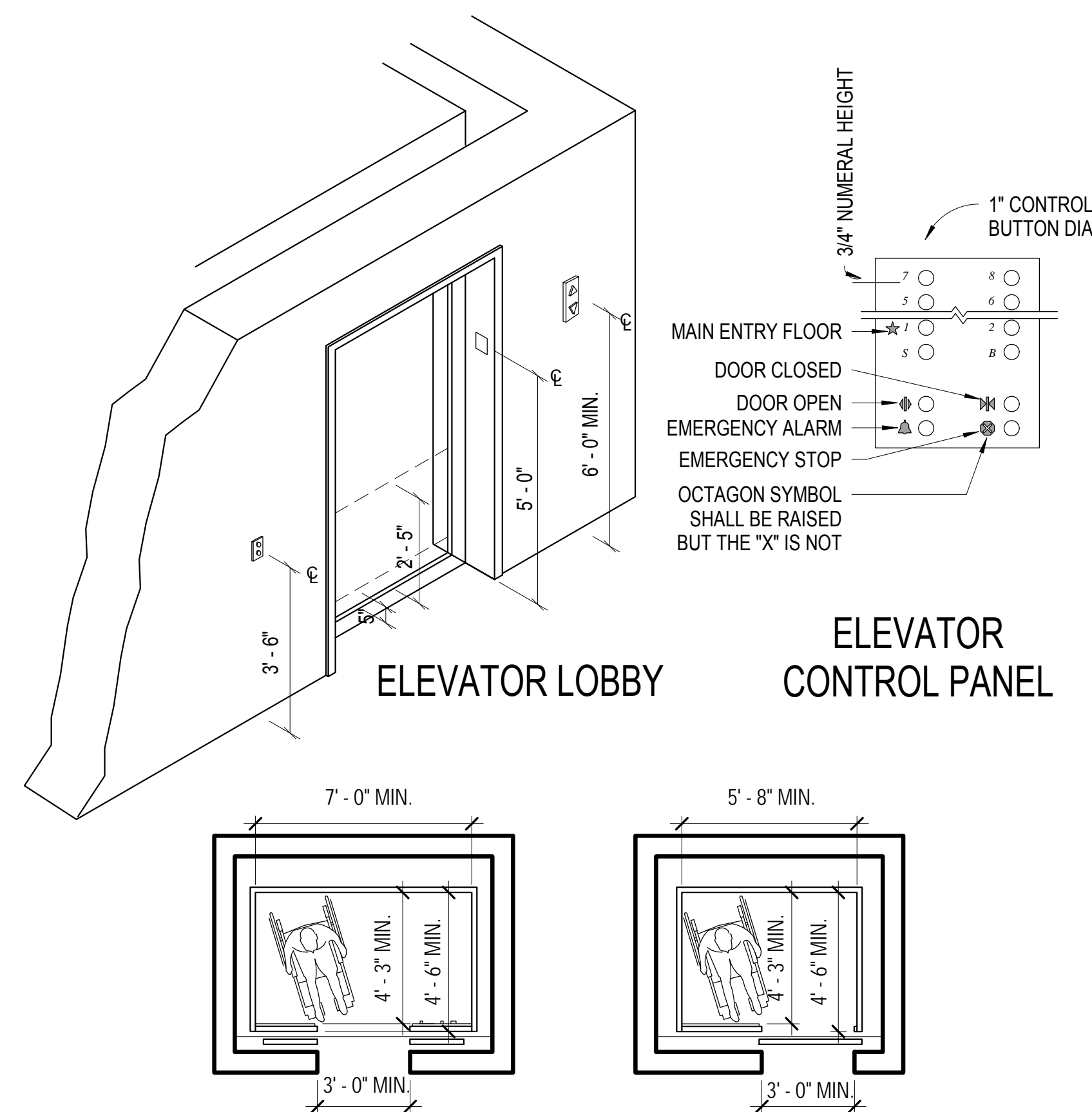
REACH RANGES
SCALE: 1/2" = 1'-0"

5



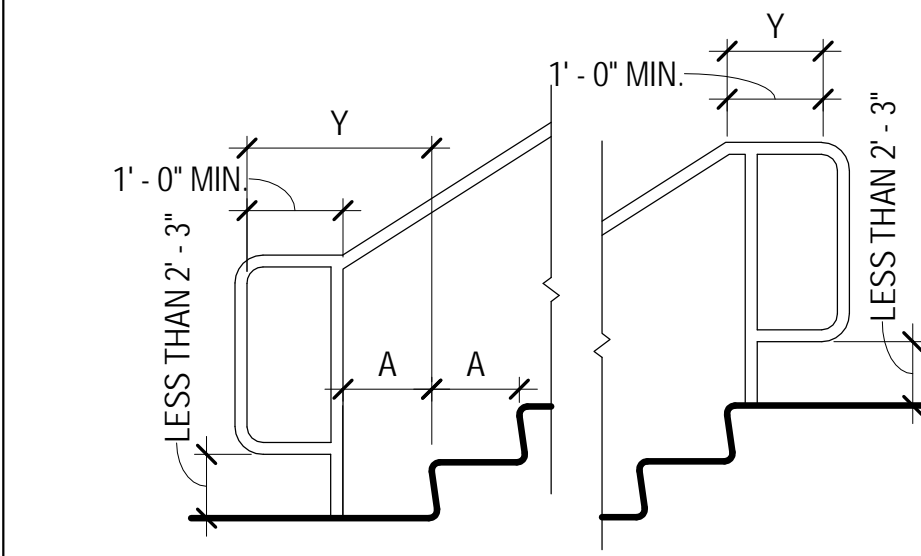
CLEARANCES
SCALE: 1/4" = 1'-0"

2



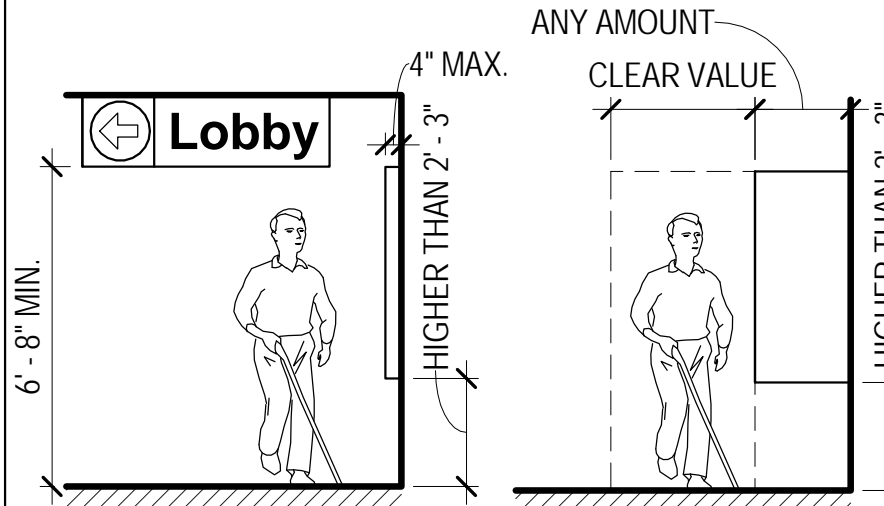
ELEVATOR
SCALE: VARIES

11



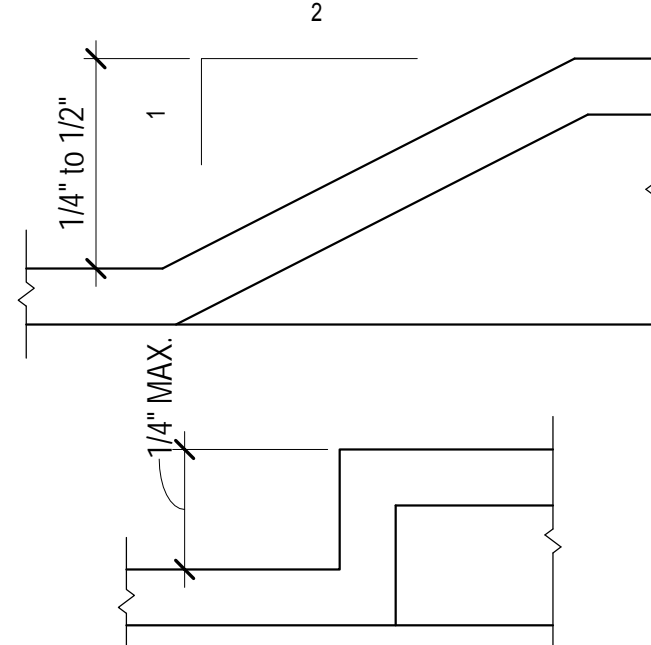
HANDRAIL EXTENSIONS
SCALE: 1/2" = 1'-0"

9



PROTRUDING OBJECTS
SCALE: 1/4" = 1'-0"

6



THRESHOLDS
SCALE: 1'-0" = 1'-0"

3

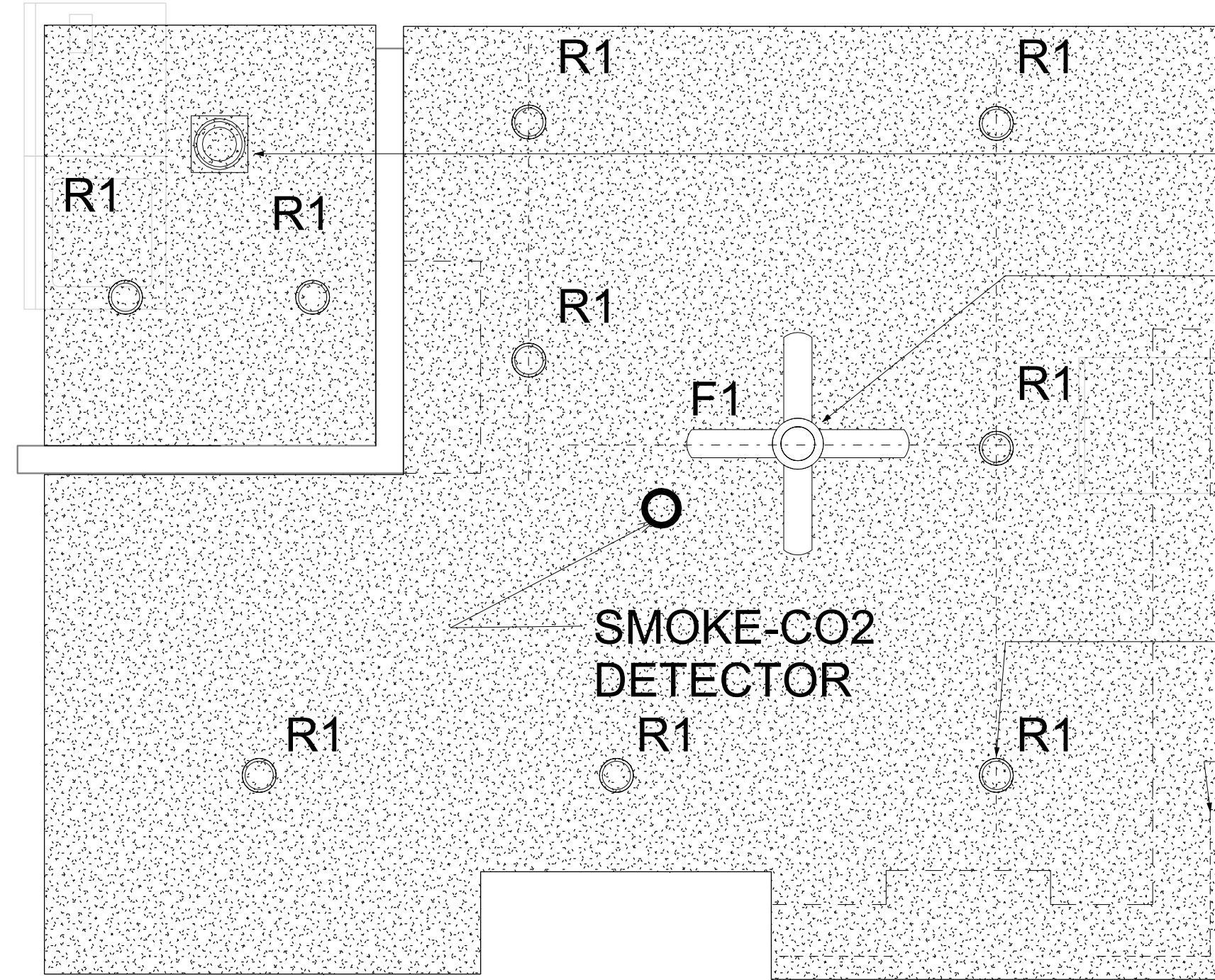
Proposed Renovation and Addition
NFI for The Town of Arlington
23 Maple Street
Arlington MA 01915

Siemasko + Verbridge
Architecture
Interior Design
Landscape Design
Decorating
www.svdesign.com
Beverly, Massachusetts 01915
t 978.927.3745
f 978.927.6565

Project Name: NFI for The Town of Arlington
Description: TYPICAL INFORMATION
Scale: 1/2" = 1'-0"
Date: 07/28/2017
Drawn by: Author
Checked by: Checker
Project #: Project Number
File Name: 07/28/2017 9:29:51 AM

Revisions	Issue	Date & Issue Description	Check	By
1	1	Revision 1		
1	1	Revision 1		

TYPICAL INFORMATION
A0.05

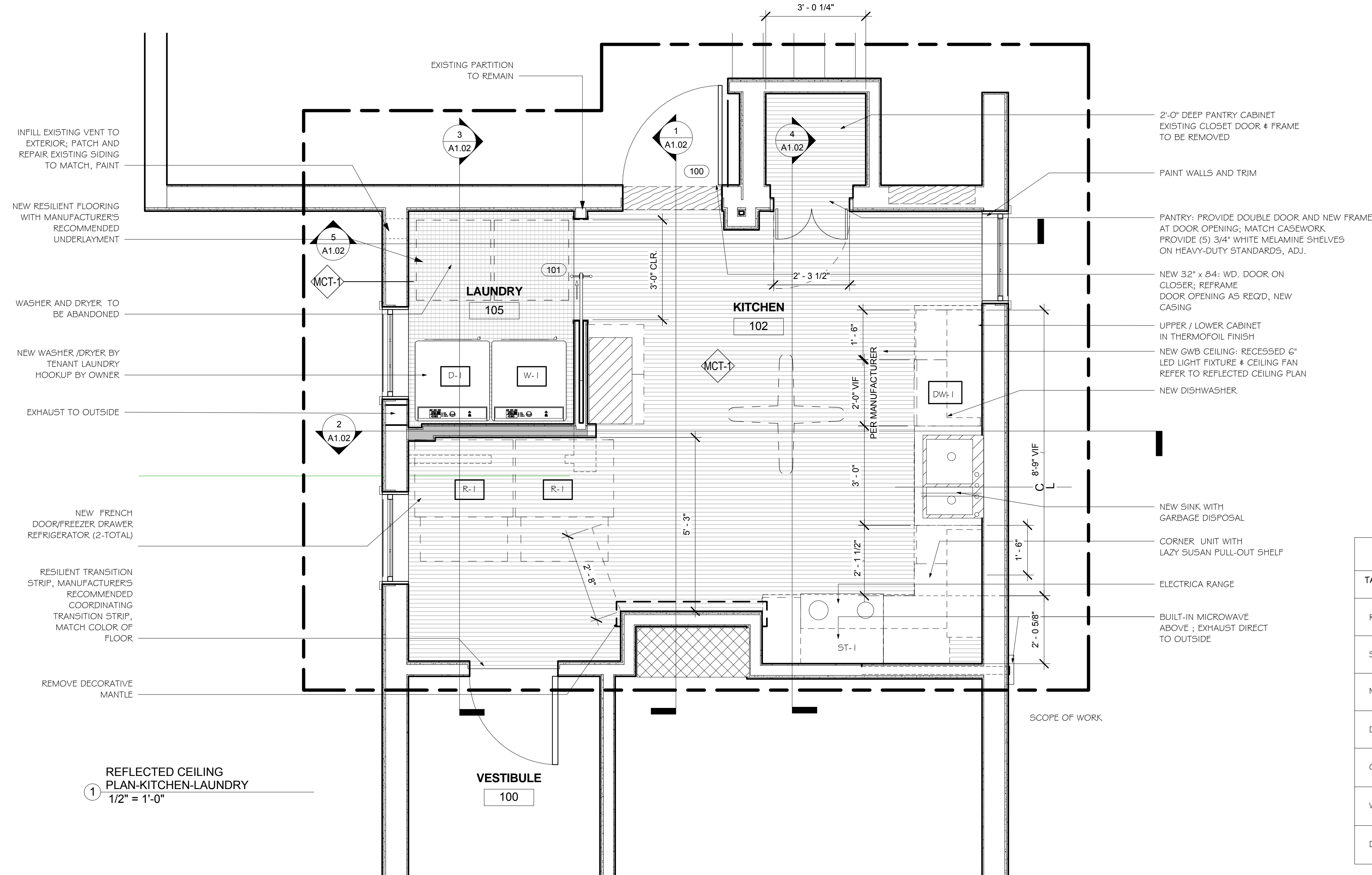


- R1: INTEGRAL LOW LEVEL FAN (CONSTANT) WITH 300CFM MIN AND TWO-SPEED. BY PANASONIC. COORDINATE SWITCH LOCATION WITH OWNER
- F1: FIXTURE: PROVIDE CASABLANCA OR EQUAL, "WSP" 54" CEILING FAN WITH LIGHT #59152. COORDINATE SWITCH LOCATION WITH OWNER
- NOTE: SMOKE ALARM AND SMOKE DETECTOR TO BE REPLACED WITH NEW CODE COMPLIANT UNIT
- R1: FIXTURE: PROVIDE PATHWAY LIGHTING OR EQUAL, 4DVM200E INF, 4VLEDSCL RECESSED DOWNLIGHT, TYP.
- R2: LED PUCK LIGHT OR STRIP MOUNTED UNDERCOUNTER. COORDINATE SWITCH LOCATION WITH OWNER

2 REFLECTED CEILING PLAN-KITCHEN-LAUNDRY
1/2" = 1'-0"

CONSTRUCTION NOTES

- 1 REFER TO PROJECT MANUAL FOR ADDITIONAL INFORMATION
- 2 ALL PARTITIONS TO BE TYPE "A3A", UON.
- 3 REFER TO FINISH PLAN # SCHEDULE FOR WALL BASE CONDITIONS
- 4 ALL EXISTING CORE DOORS TO REMAIN, UON. DOORS AND FRAMES TO BE REFINISHED. NEW HARDWARE TO BE PROVIDED TO MATCH NEW STANDARD
- 5 GC TO PROVIDE FIRE RETARDANT BLOCKING IN WALL LOCATIONS FOR ALL WALL HUNG MILLWORK, EQPT, AND FURNITURE
- 6 ALL MILLWORK COUNTERS TO BE 28" DEEP, UON.
- 7 PATCH & REPAIR ALL CORE WALLS, COLUMNS, AND EXTERIOR COLUMNS
- 8 PATCH LOCATIONS WITH DRYWALL WHERE ELECTRICAL DEVICES WERE REMOVED



1 REFLECTED CEILING PLAN-KITCHEN-LAUNDRY
1/2" = 1'-0"

SQUARE FOOTAGE CALCULATION

FIRST FLOOR PLAN	245 SF
------------------	--------

LEGEND



APPLIANCE SCHEDULE				
TAG	TYPE	MODEL	DIMENSION	REMARK
R-1	REFRIGERATOR	GNE2GG5D	69 7/8" X 33 3/4" X 35 3/4"	ENERGY STAR
ST-1	RANGE	P5968	31 1/4" X 28 7/8" X 37 1/4"	5-ELEMENT COOKTOP
MC-1	BUILT-IN MICROWAVE	JVM2052	29 7/8" X 15 3/8" X 16 1/4"	2.0 CU. FT. SPACEMAKER 5-SPEED 300 CFM VENTING SYSTEM
DW-1	DISHWASHER	GLD7768V	35 3/4" 24" X 25"	
GBG-1	GARBAGE DISPOSAL	GFC720V	20" X 10"	
W-1	FRONT LOADING WASHING MACHINE	PFWS4605L	27" X 34 3/8" X 39 3/4"	
D-1	FRONT LOADING DRYER, HIGH EFFICIENCY	GB-1	27" X 34 3/8" X 39 3/4"	

07/28/2017
Check

Issued for Bid/Permit
By

Revisions
Date & Issue Description

Plot Date: 07/28/2017 9:29:55 AM
Checked by: Checker

Project #
Project Number

Project Name: 23 Maple Street Arlington MA 01915
Architecture Interior Design Landscape Design

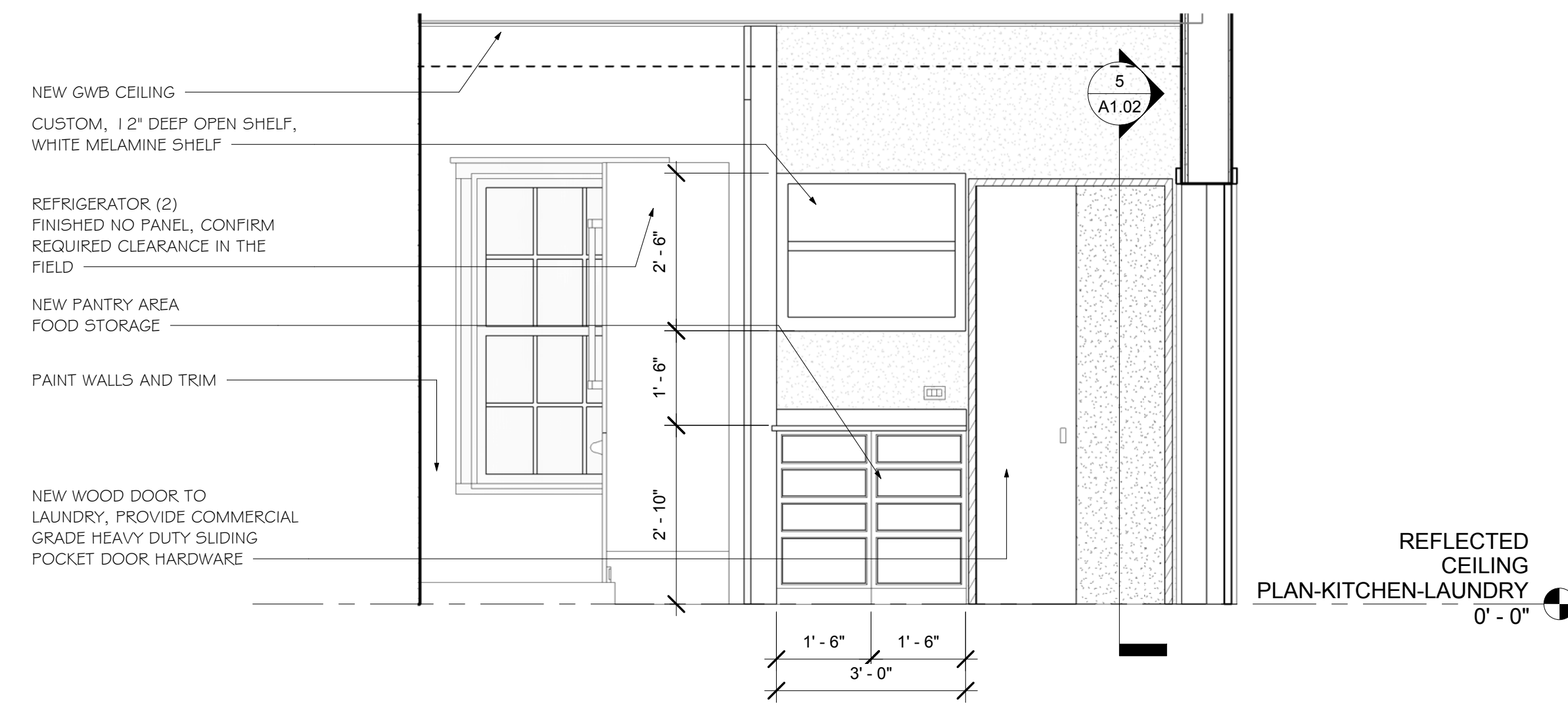
Scale: 1/2" = 1'-0"
Date: 07/28/2017

Drawn by: AC
File Name: 978.927.3745

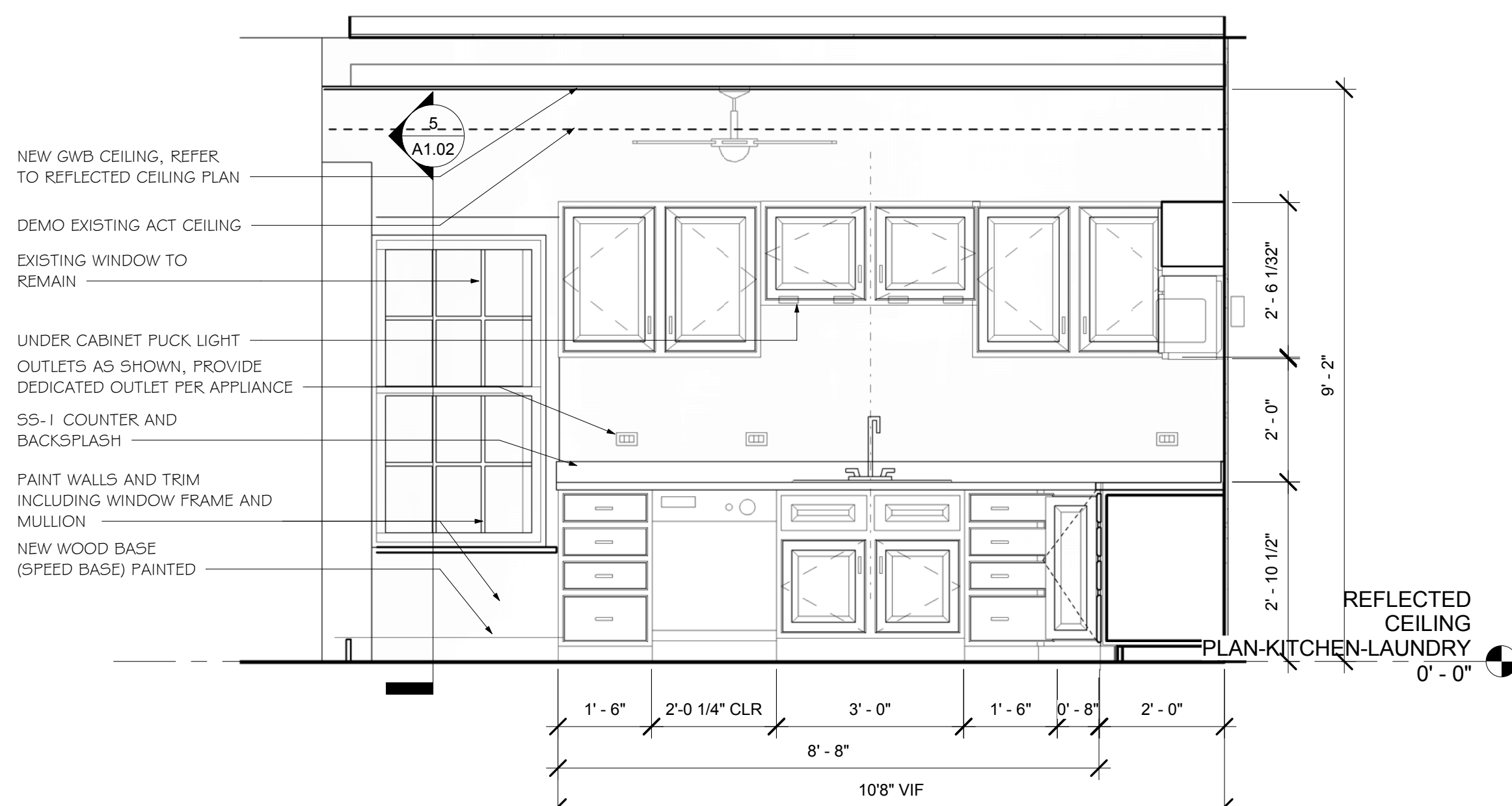
Renovation/Addition
NFI for The Town of Arlington

Siemasko + Verbridge
Beverly, Massachusetts 01915

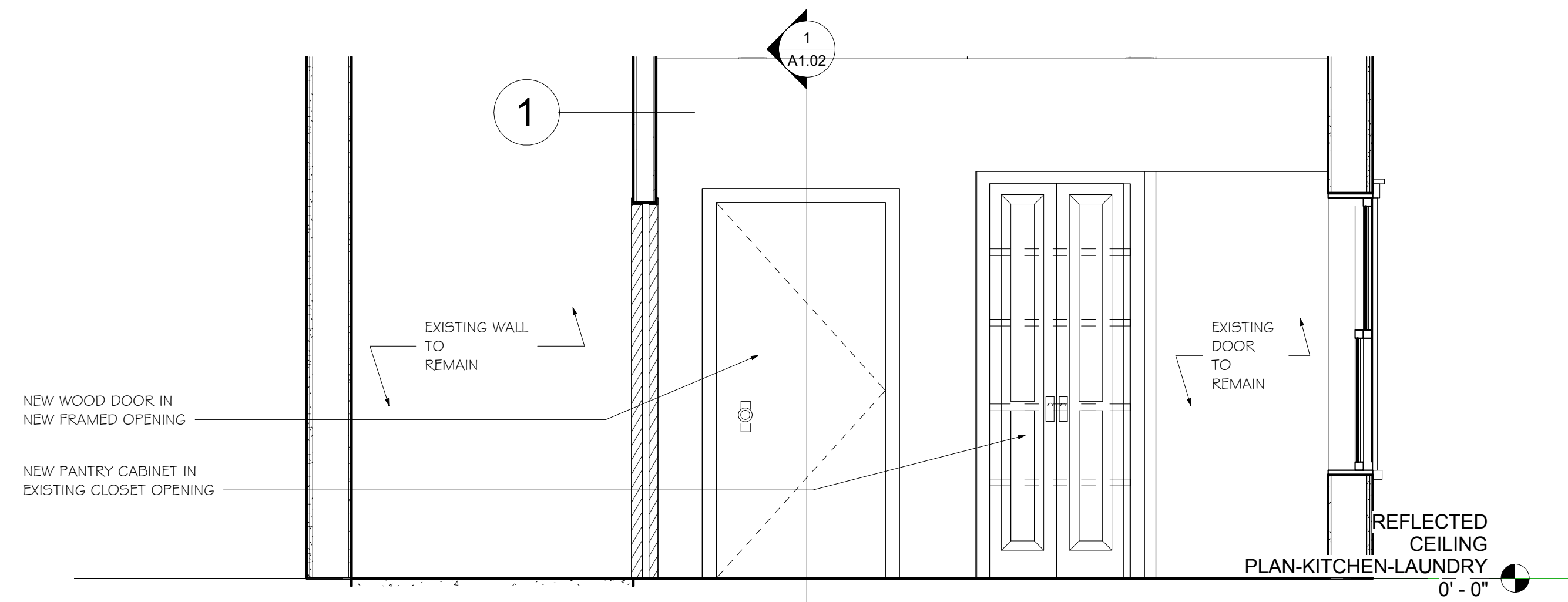
FLOOR PLAN
A1.01



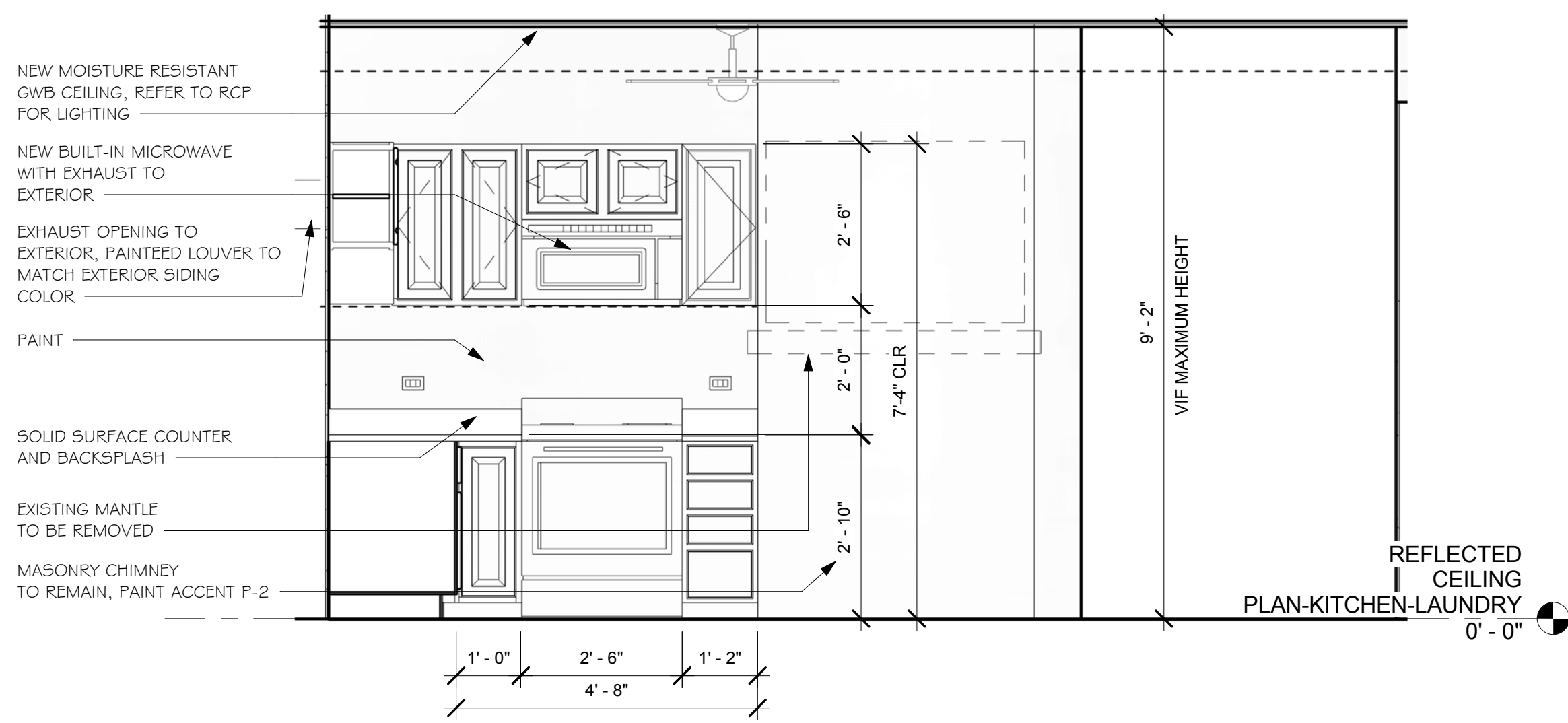
1 PANTRY AREA
1/2" = 1'-0"



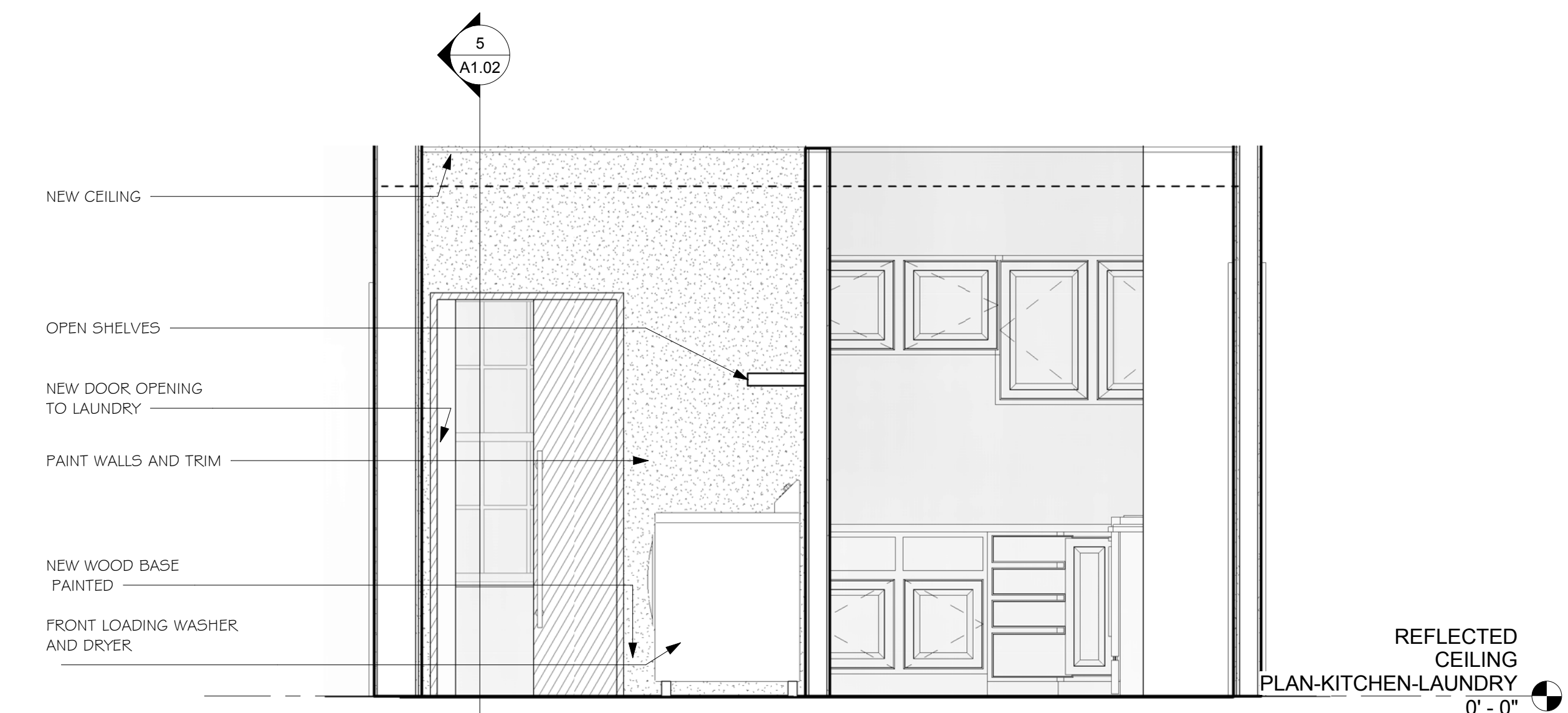
4 KITCHEN ELEVATION
1/2" = 1'-0"



5 ELEVATION NEW ENTRY DOOR/CLOSET
1/2" = 1'-0"



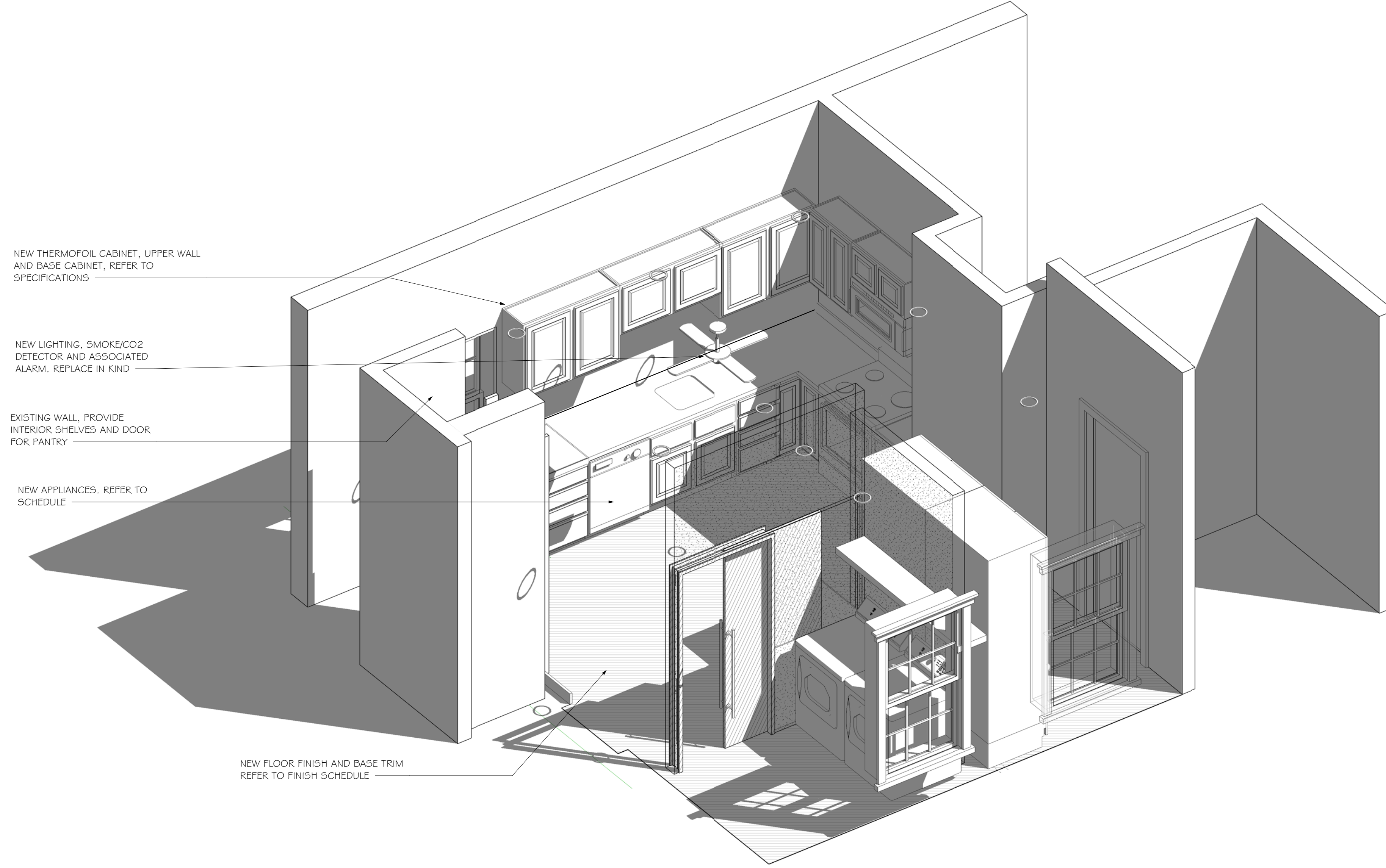
2 KITCHEN ELEVATION FIREPLACE WALL
1/2" = 1'-0"



3 LAUNDRY/PARTIAL KITCHEN ELEVATION
1/2" = 1'-0"

	Project Name: NFI MA Addition Description: INTERIOR ELEVATION Date: 07/28/2017 Drawn by: AC File Name:	Issued for Bid/Permit: 07/28/2017 Issue: A1.02 Date & Issue Description:	Check:
	23 Maple Street Arlington MA 01915 Architecture Interior Design Landscaping Decorating Beverly, Massachusetts 01915 www.svdesign.com t 978.927.3745 f 978.927.6565	Plot Date: 07/28/2017 9:29:42 AM Checked by: AC Project #:	By:

Renovation/Addition
NFI for The Town of Arlington
Siemasko + Verbridge
 INTERIOR ELEVATION
A1.02



NEW THERMOFOIL CABINET, UPPER WALL AND BASE CABINET, REFER TO SPECIFICATIONS

NEW LIGHTING, SMOKE/CO2 DETECTOR AND ASSOCIATED ALARM. REPLACE IN KIND

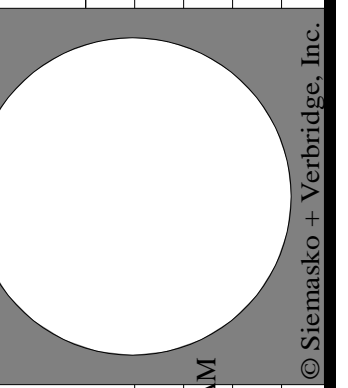
EXISTING WALL, PROVIDE INTERIOR SHELVES AND DOOR FOR PANTRY

NEW APPLIANCES. REFER TO SCHEDULE

NEW FLOOR FINISH AND BASE TRIM REFER TO FINISH SCHEDULE

1 KITCHEN

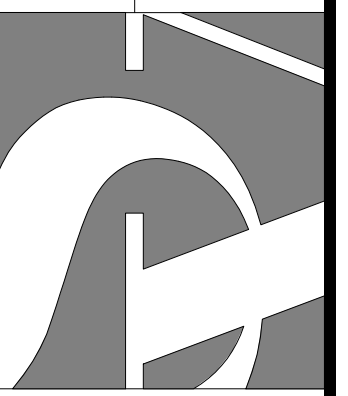
Revisions	Issue	Date & Issue Description	Check	By



Project Name: NFI MA - Addition
 Description: 3D RENDERING
 Scale: 1/8" = 1'-0"
 Date: 07/28/2017
 Drawn by: Author
 File Name: 978.927.3745

23 Maple Street
 Arlington MA 01915
 Architecture
 Interior Design
 Landscape Design
 Decorating
 t 978.927.3745
 www.svdesign.com

Renovation/Addition
NFI for The Town of Arlington
Siemasko + Verbridge
 126 Dodge Street
 Beverly, Massachusetts 01915



3D RENDERING

A1.03

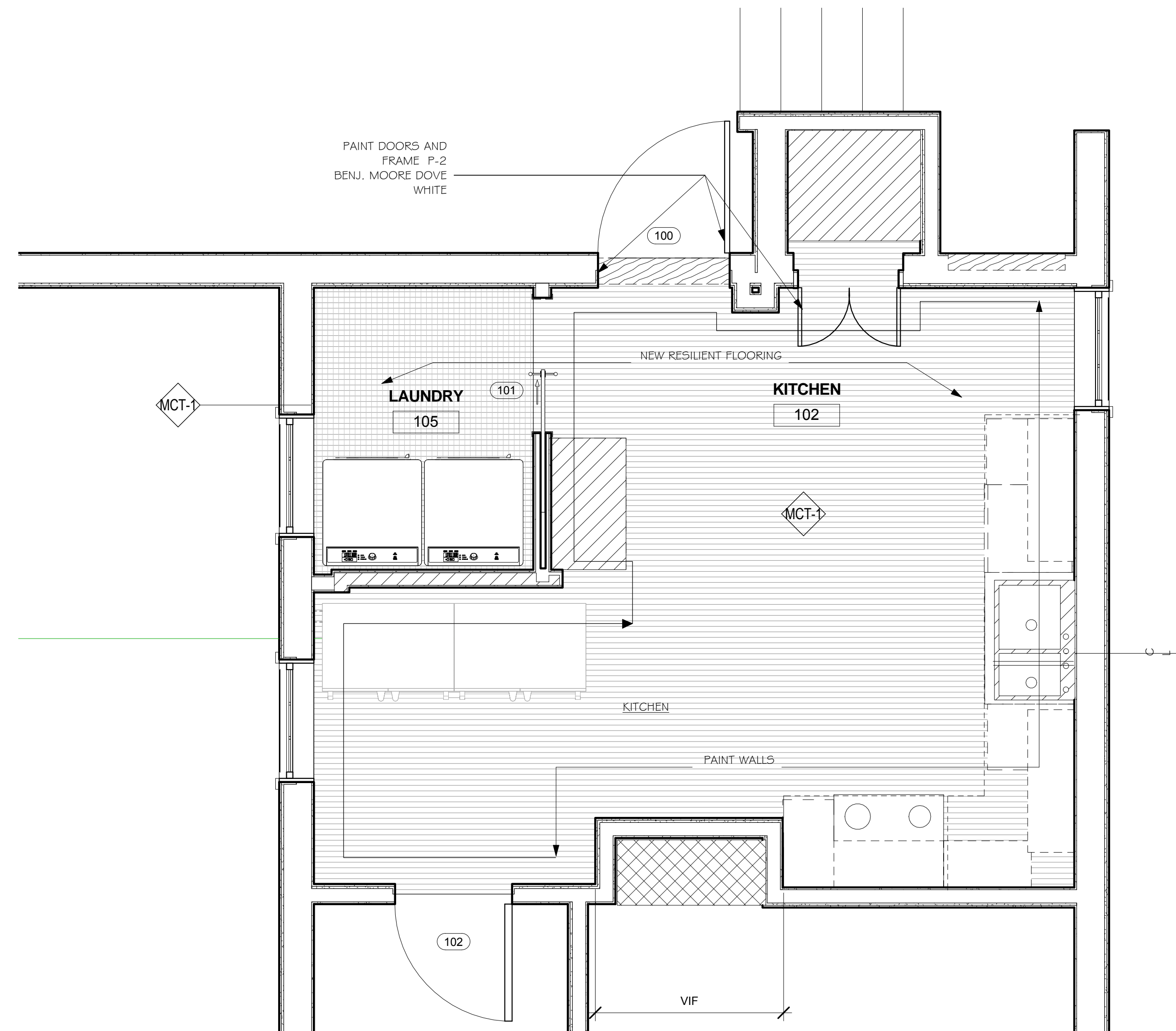
FINISH SCHEDULE

FINISH	CODE	DESCRIPTION	REMARKS
FLOORING			
MARMOLEUM TILE	MCT-1	MFR: FORBO STYLE: MODULAR STRIATO T5231 CLIFF OF MOHER	LIGHT NUETRAL TILE
TRANSITION STRIP	MCT-2	MFR: ROPPE STYLE: 159 REDUCER STRIP COLOR: PEWTER	
BASE			
WOOD BASE	B1	MFR: SPEED BASE STYLE: 4" COLOR: PT-2	

WALLS			
PAINTED GWB	PT1	MFR: BENJAMIN MOORE STYLE: SCTRUBBABLE LATEX COLOR: 537 LIME GREEN	
PAINTED TRIM	PT2	MFR: BENJAMIN MOORE STYLE: SATIN TRIM COLOR: DOVE WHITE	
MILLWORK			
CABINETS	--	MFR: MERRILLAT STYLE: MCULM-S-WHNON-SSS- COLOR: WHITE	MCDURMON DOOR STYLE, LAMINATE, SQUARE, WHITE; 4" WIRE PULL
SOLID SURFACE	SS1	MFR: WILSONART STYLE: AVALANCHE MELANGE COLOR: 9175 ML	

DOOR SCHEDULE

ASSEMBLY	DOOR	DIMENSIONS			MATERIAL	FINISH	FRAME			HARDWARE SET	FIRE RATING	REMARKS
		WIDTH	HEIGHT	THICKNESS			FRAME TYPE	MATERIAL	FINISH			
100	A	3' - 0"	6' - 8"	1 3/8"	WD.	PAINT'D.	PAINT'D	WD.	PAINT'D	1	NA	MATCH EXIST.
101	18	3' - 1"	6' - 8"	1 3/8"	WD.	PAINT'D.	PAINT'D	WD.	PAINT'D	1	NA	

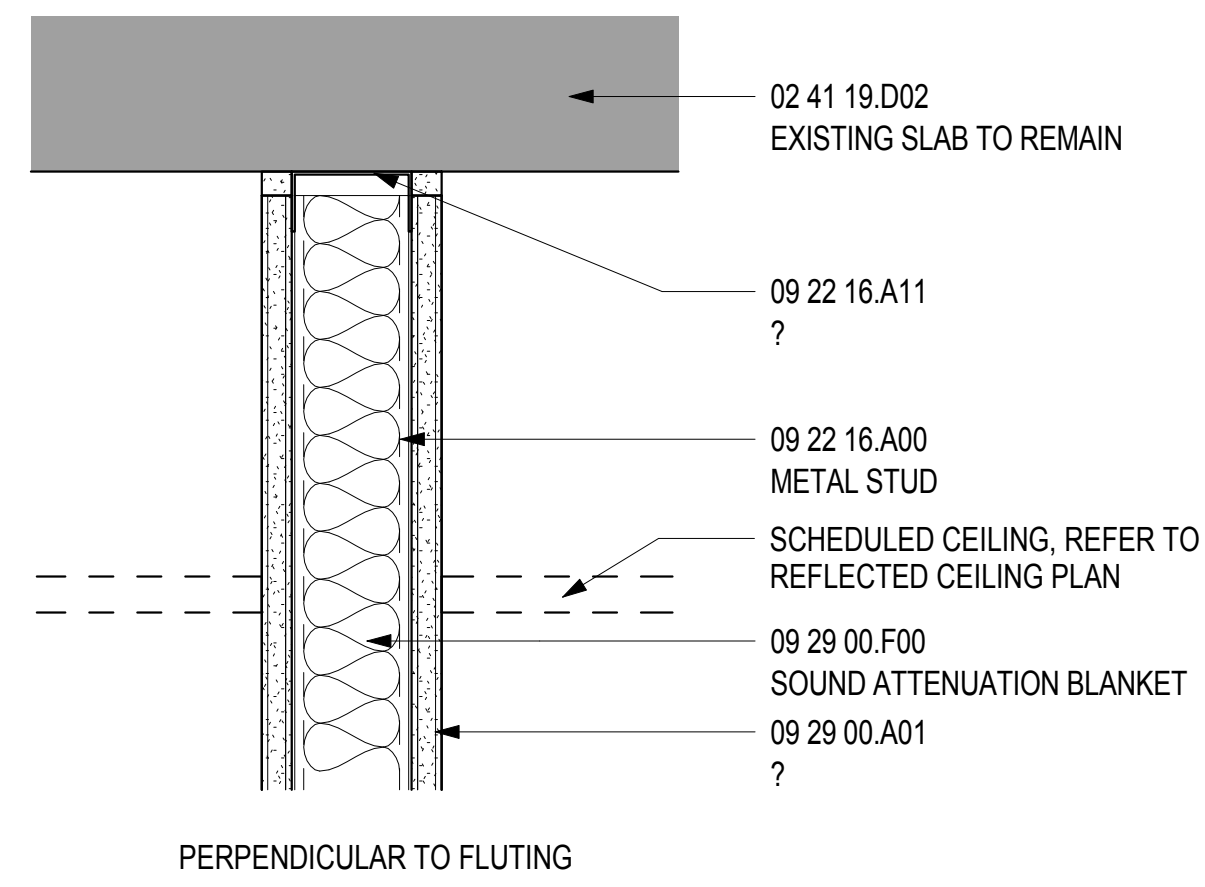


② FIRST FLOOR FINISH PLAN
1/2" = 1'-0"

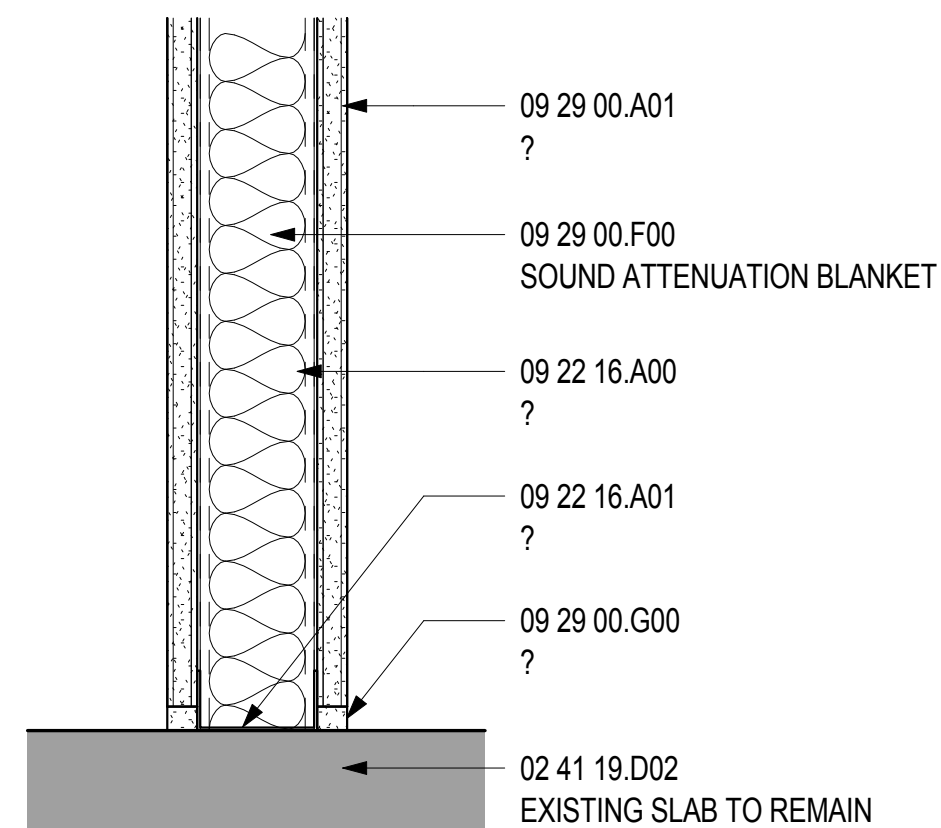
GENERAL NOTES

- 1 PROVIDE ALL NECESSARY STRUCTURAL BLOCKING AND RELATED WORK FOR DOOR, FRAME AND HARDWARE INSTALLATION IN STRICT ACCORDANCE WITH THE MANUFACTURER'S SPECIFICATIONS.
- 2 NO THROUGH-BOLTING WILL BE ACCEPTED. DOOR TO BE REINFORCED INTERNALLY.
- 3 SEE DOOR SPECIFICATIONS FOR DOOR TYPES
- 4 ALL DOORS WITH LOCKSETS TO BE KEYPED ACCORDING TO TENANT REQUIREMENTS AND COMPATIBLE WITH LANDLORD'S KEYING SYSTEM. COORDINATE REQUIREMENTS WITH TENANT.
- 5 ALL LOCATIONS WHERE CLOSERS ARE REQUIRED SHALL BE INSTALLED ON THE SPACE SIDE, NOT VISIBLE FROM PUBLIC SPACE.

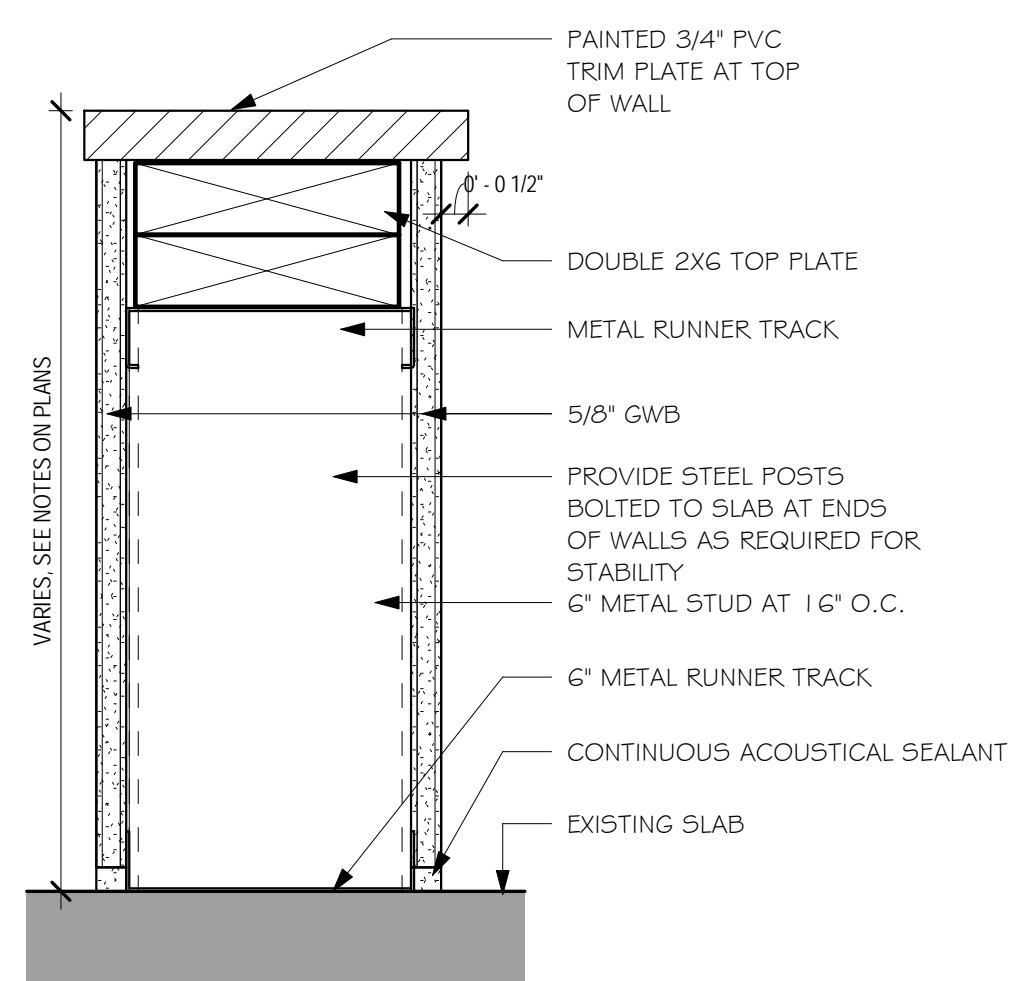
Project Name: NFI MA Addition Description: FINISH SPECIFICATIONS AND SCHEDULES Scale: As Indicated Date: 07/28/2017 9:29:50 AM Drawn by: Author File Name:	Issued for Bid/Permit 07/28/2017	Check By
	Revisions Issue Date & Issue Description Revision 1 Date 1	Issue Date & Issue Description Revision 1 Date 1
Project Name: 23 Maple Street Arlington MA 01915 Architecture Interior Design Landscape Design Decorating f 978.927.3745 www.svdesign.com Beverly, Massachusetts 01915	Plot Date: 07/22/2017 9:29:50 AM Checked by: Checker Project #: Project Number	© Siemasko + Verbridge, Inc.



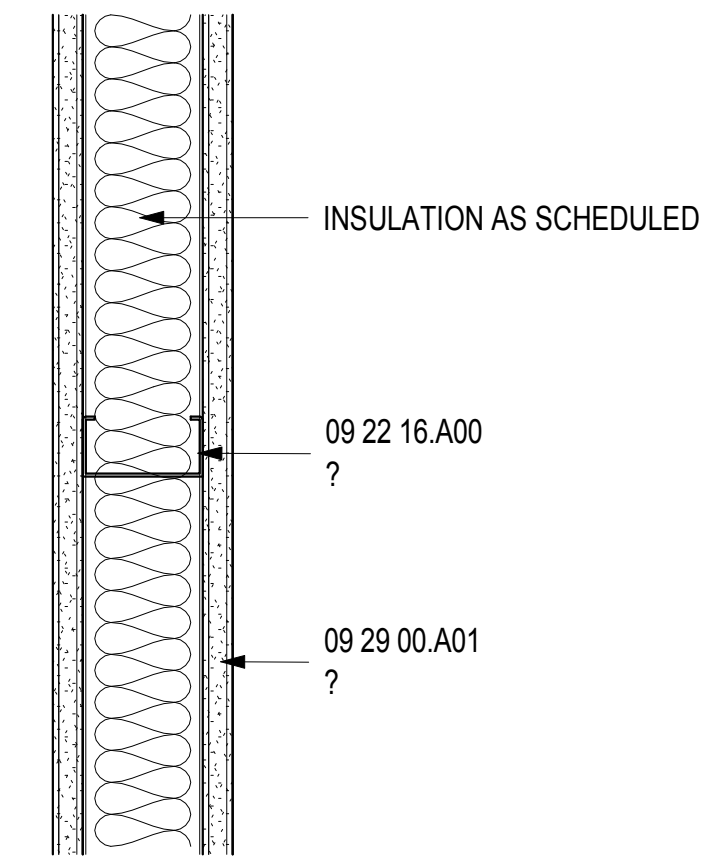
HEAD DETAIL AT ALL WALLS U.O.N.
SCALE: 3" = 1'-0" **1**



BASE DETAIL AT ALL WALLS
SCALE: 3" = 1'-0" **3**

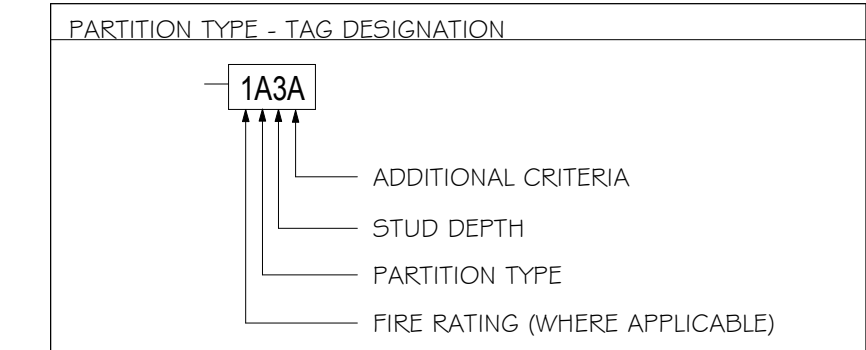


BASE DETAIL AT ALL WALLS
SCALE: 3" = 1'-0" **5**



PARTITION TYPE "A"
SCALE: 3" = 1'-0" **A**

SHEET NOTES



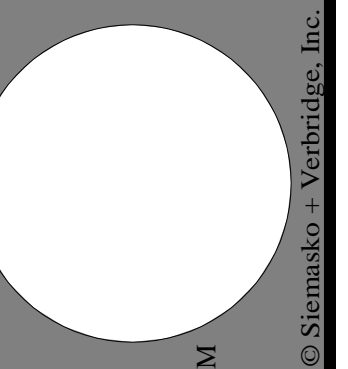
STANDARD PARTITION ASSEMBLY TYPES			
TYPE	SHEATHING	STUD	SHEATHING
A	1-LAYER	METAL C-STUD	1-LAYER
B	2-LAYERS	METAL C-STUD	2-LAYERS
C	2-LAYERS	METAL C-STUD	1-LAYER
D	1-LAYER	METAL C-STUD	NONE
E	2-LAYERS	METAL C-STUD	NONE
F	1-LAYER	HAT CHANNEL	NONE
G	1-LAYER	LAMINATED	NONE
H	1-LAYER	METAL C-H STUD	1-LAYER
J	2-LAYERS	METAL C-H STUD	1-LAYER
K	1-LAYER	METAL C-H STUD (2)	1-LAYER
L	2-LAYERS	METAL C-H STUD (2)	2-LAYERS
M	SEE DETAIL NOTES	MASONRY WALL	SEE DETAIL NOTES
N-Z	FOR FUTURE EXPANSION		
WA	1-LAYER	WOOD STUD	1-LAYER
WB	2-LAYERS	WOOD STUD	2-LAYERS
WC	2-LAYERS	WOOD STUD	1-LAYER
WD	1-LAYER	WOOD STUD	NONE
WE	2-LAYERS	WOOD STUD	NONE
WK	1-LAYER	WOOD STUD (2)	1-LAYER
WL	2-LAYERS	WOOD STUD (2)	2-LAYERS

STUD DEPTH SCHEDULE				
TAG NUMBER	MTL STUD DEPTH	MTL C-H STUD DEPTH	WOOD STUD DEPTH	CMU WIDTH
0	NO FRAMING REQUIRED			
1	1 5/8"			9 5/8"
2	2 1/2"	2 1/2"		11 5/8"
3	3 5/8"			
4	4"	4"	4"	3 5/8"
6	6"	6"	6"	5 5/8"
7	7/8" FURRING CHANNEL			
8				7 5/8"

* THE DEPTH DESIGNATIONS 1 AND 2 ARE USED FOR 9 5/8" AND 11 5/8" BLOCKS RESPECTIVELY

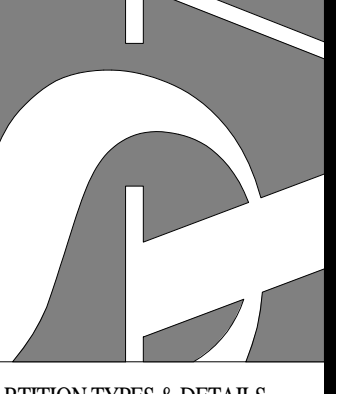
GENERAL NOTES

Revisions	Issue	Date & Issue Description	Check	By
1	1	07/28/2017		



Project Name: NFI MA - Arlington
Description: PARTITION TYPES & DETAILS
Scale: 3" = 1'-0"
Date: 07/28/2017 9:29:52 AM
Drawn by: Author
Checked by: Checker
File Name: Project #/Project Number

Proposed Renovation and Addition
NFI for The Town of Arlington
23 Maple Street
Arlington MA 01915
Siemasko + Verbridge
Architecture
Interior Design
Landscape Design
Decorating
www.svdesign.com
Beverly, Massachusetts 01915
t 978.927.3745
f 978.927.6565



A1.07