

ARLINGTON RESERVOIR MASTER PLAN



PUBLIC MEETING # 2

October 26, 2017

Cheri Ruane, RLA
Cass Chroust, RLA



KEY STAKEHOLDER GROUPS

- Arlington Recreation Department
- Arlington Park and Recreation Commission
- Arlington Conservation Commission
- Arlington Reservoir Committee
- Arlington Open Space Committee
- CPA Committee

PRESENTATION OUTLINE

- **Project Phases + Timeline**
- **Project Understanding**
- **What We've Been Up To**
- **Existing Conditions + What We've Heard So Far**
- **Site Analysis**
- **Design Opportunities**
- **Project Schedule**

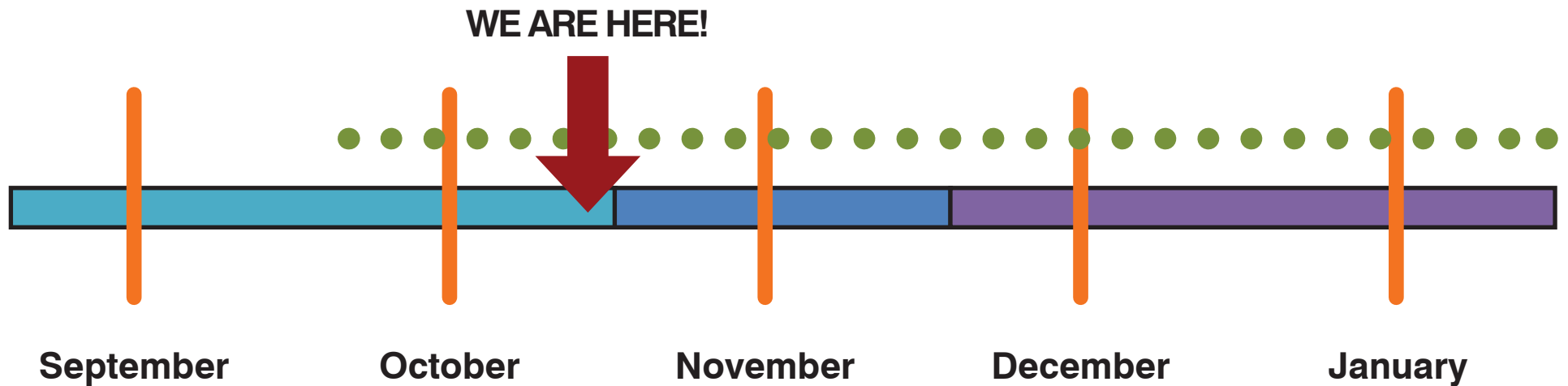
PROJECT PHASES + TIMELINE

Project Phases

- Site Analysis + Environmental Information Gathering
- ● ● Public Participation + Input
- Conceptual Design + Environmental Assessment
- Master Plan + Environmental Recommendations

Timeline

Summer / Fall
Project Duration
Fall / Winter
Winter



PROJECT UNDERSTANDING

MASTER PLAN

- Engage in extensive public visioning process
- Identify renovations to existing beach amenities
- Recommend upgrades to the beach and lawn areas
- Assess options for a small boat ramp
- Determine critical upgrades to all walking paths
- Assess ADA needs
- Provide suggestions for graphics, signage and wayfinding

ENVIRONMENTAL

- Assess water quality
- Evaluate water inflows
- Identify measures to control shoreline and bank erosion
- Inventory land and aquatic plant species
- Identify options for managing invasive vegetation (and geese)
- Assess tree health

WHAT WE'VE BEEN UP TO...

SATURDAY • SEPTEMBER 30th

PUBLIC INPUT SESSION

HELP ARLINGTON PLAN THE FUTURE
OF THE ARLINGTON RESERVOIR



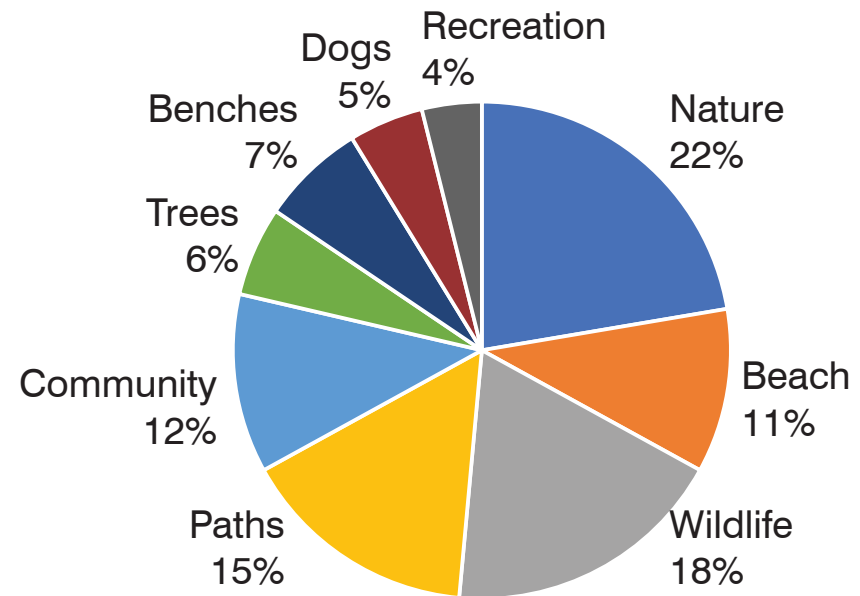
- Reservoir survey complete
- Erosion areas identified
- Wetland delineation complete
- Invasive species survey complete
- Water quality samples taken
- Aquatic habitats survey complete

- Water depth info gathered
- Pump room mechanical systems assessed
- Public meet-up at The Res and discussion

WHAT WE'VE HEARD SO FAR

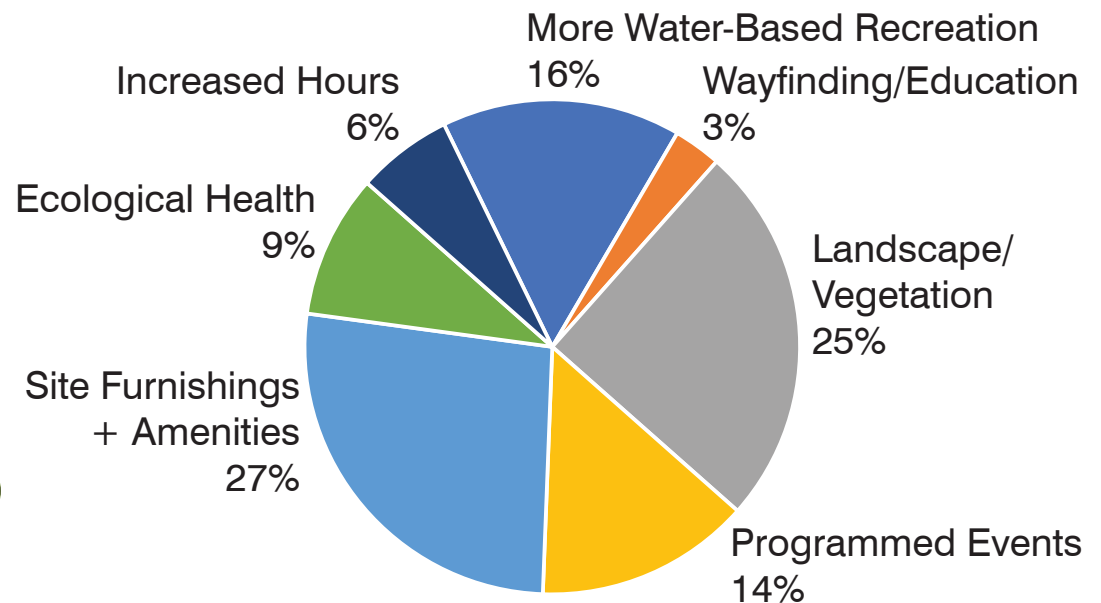
BEST THINGS ABOUT THE RES

- Swimming!
- Habitat garden, wildlife and trails.
- The willow trees.
- Shade and grass on the beach.
- Nature trail near Busa Farm.
- The loop trail.
- The shady beach!
- Fall/Winter walks with the dog.
- The beach is very affordable.



IMPROVEMENTS NEEDED

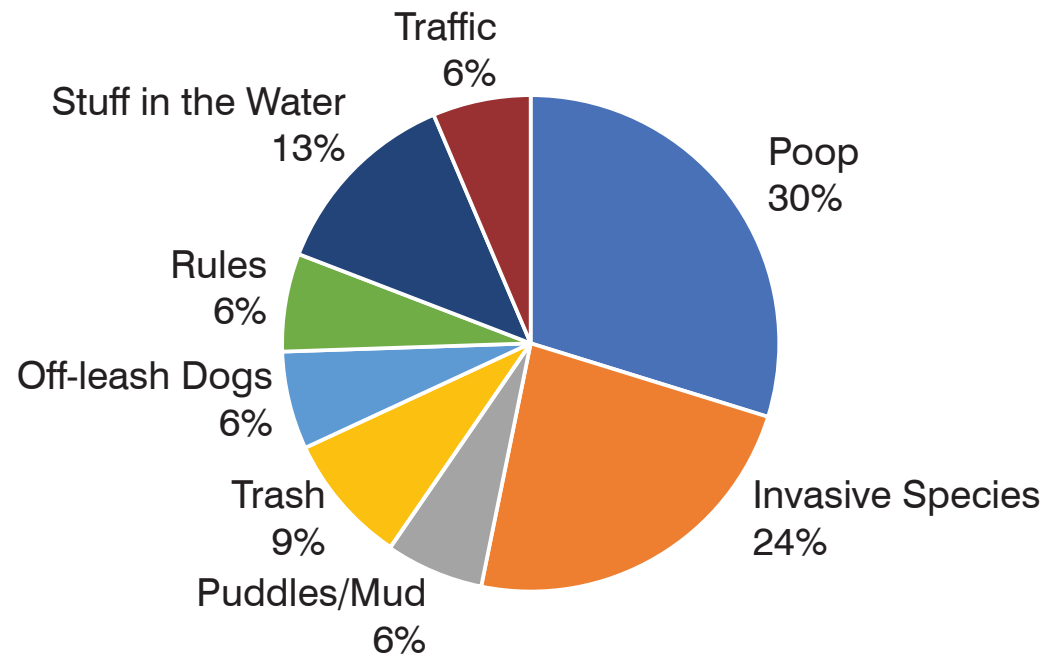
- More tables for lunch.
- Bigger swim area.
- Better maintenance of trails.
- Splash pad!
- Water slide.
- More walking/trail options.
- More events (concerts, movies, etc.)
- Swimming lessons.



WHAT WE'VE HEARD SO FAR

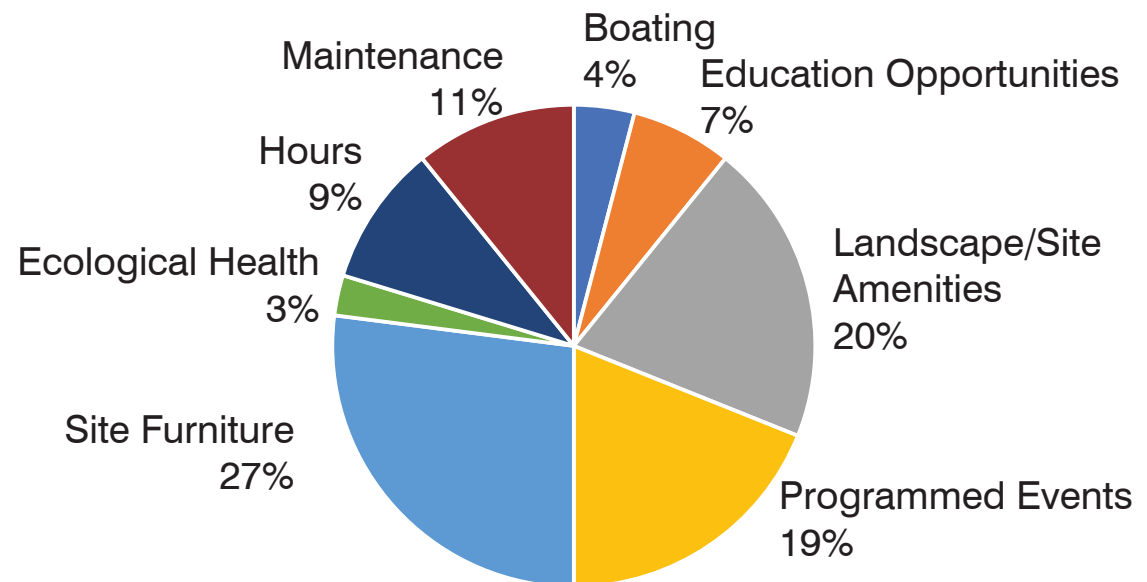
I WISH THE RES HAD LESS...

- Invasive plants.
- Debris floating in the water.
- Fencing along Lowell Street.
- Geese!
- Sediment in the swimming water.
- Erosion.
- Dog poop.
- Snow plowing! (cross country ski)
- Scum on bottom of swim area.

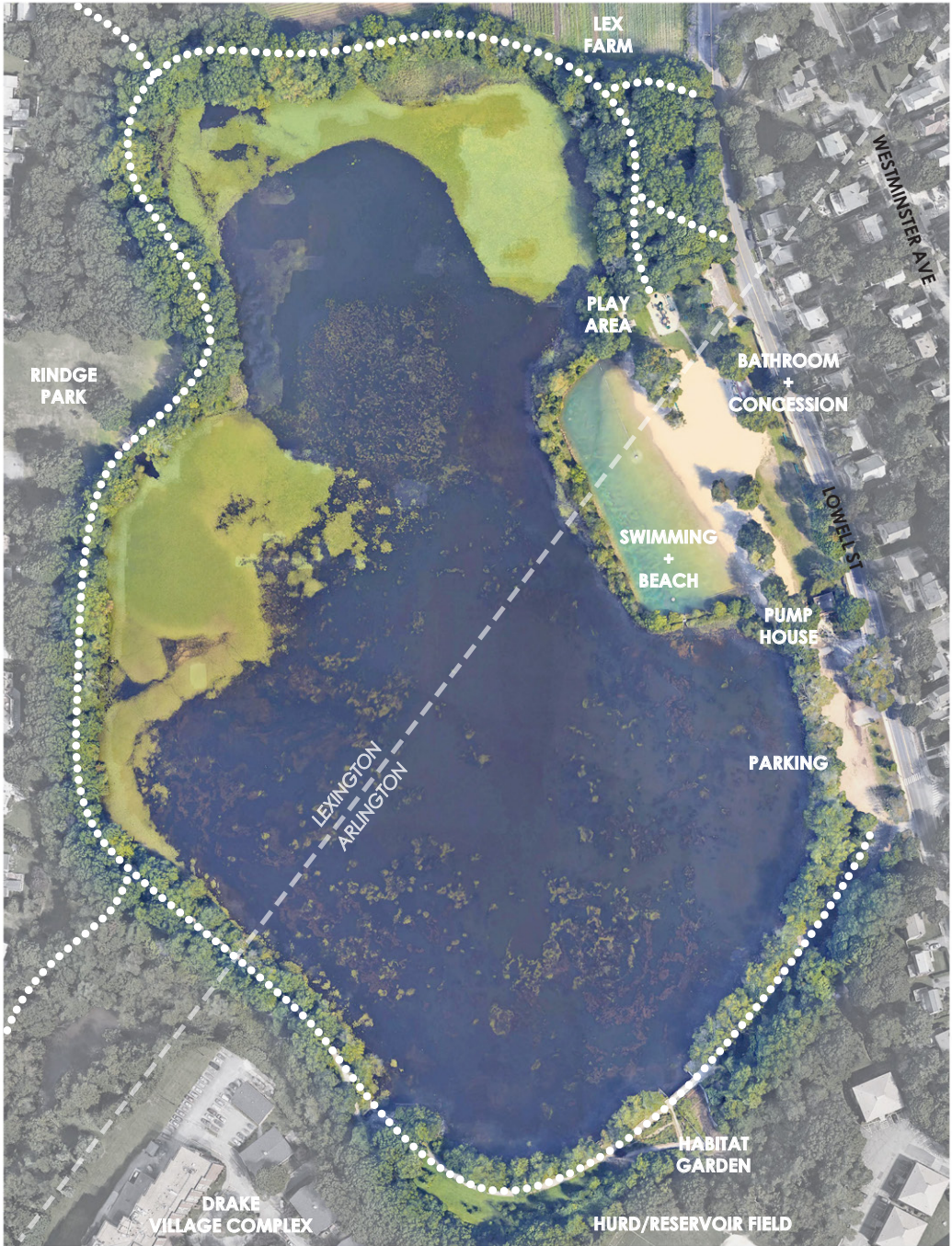


I WISH THE RES HAD MORE...

- Seating.
- Available beach hours in summer.
- Information on wildlife.
- Viewing opportunities.
- Public art.
- Year round access.
- Trash cans.
- Landscaped vegetation.



EXISTING CONDITIONS



EXISTING CONDITIONS - Beach + Parking Area



EXISTING CONDITIONS - Perimeter



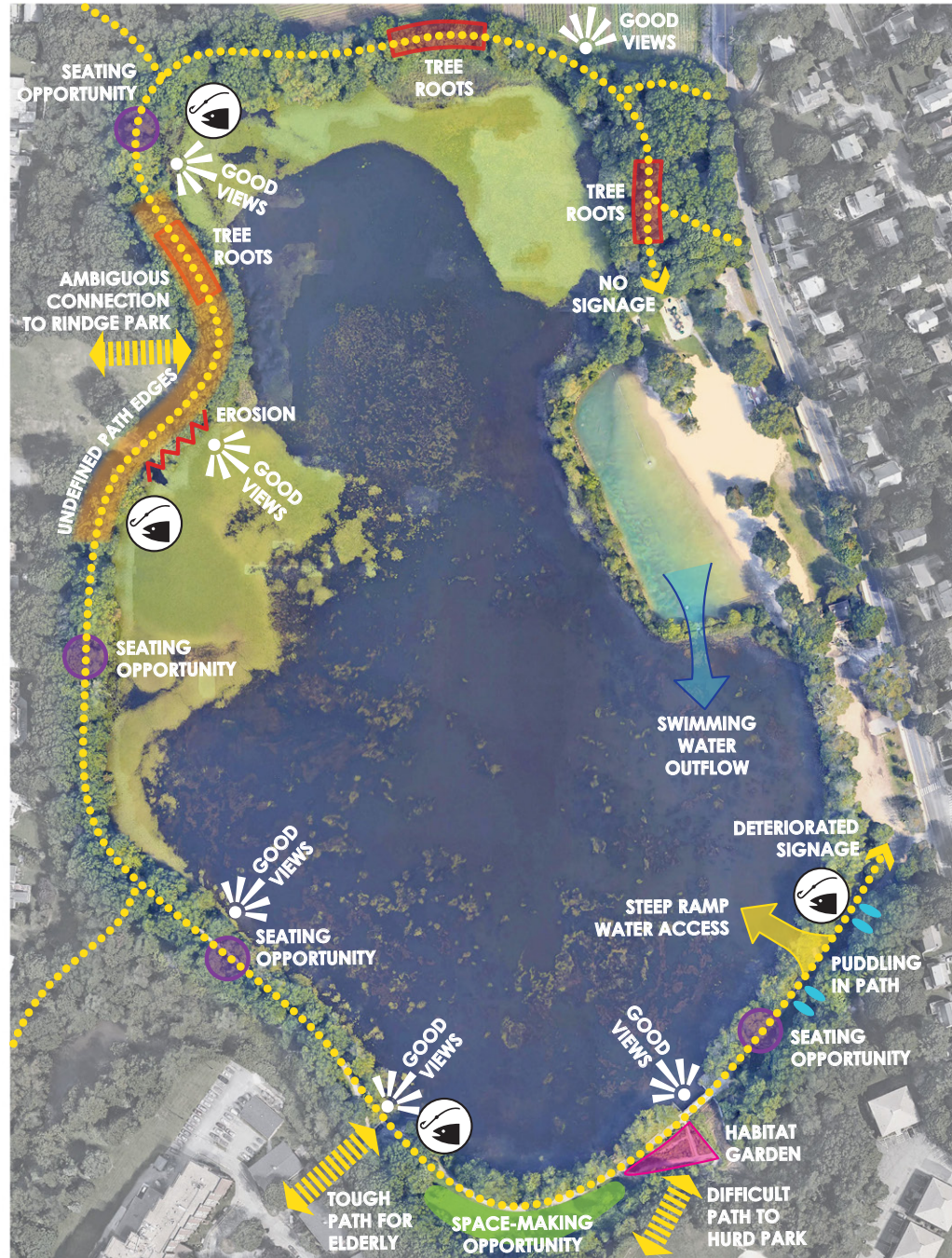
EXISTING CONDITIONS - Perimeter



SITE ANALYSIS - Surrounding Context



SITE ANALYSIS - Reservoir Perimeter



SITE ANALYSIS - Beach + Parking Area



WHAT WE NEED FROM YOU

- Site Observations
(the good, the bad and the rest)
- Ideas for Improvements
- Features to Remain
- Location in Need of Repair
- Fondest Memories / Favorite Moments



OPPORTUNITIES TO PROVIDE FEEDBACK

- Walkabout Guide*
 - Email images with captions:
chroustc@wseinc.com
 - Community Meetings
- *Mail or drop off to Arlington Recreation / scan/photo to the email address / leave them with us at any community meeting



PUBLIC INPUT

Public Input + Participation

- Weekend Info Session
- Community Information & Listening Session
- Walkabout Guide
- Conceptual Design Phase Community Presentation
- Preferred Master Plan Community Presentation

Schedule

- Sept. 23, 2017 (complete)
- October 26, 2017
- Through November 15
- November 30, 2017
- January 2018

THANK YOU!

THOUGHTS

QUESTIONS

COMMENTS