



Town of Arlington
HATCH

April 11, 2018
Spy Pond Edge & Erosion Control **Final Design**



Agenda

- 1. Introductions**
- 2. Project Team**
- 3. Project Goals**
- 4. Project Location, Schedule, & Future Work**
- 5. Restoration Plans**
- 6. Project Area Stations**
 - **Boards**
 - **Questions**





Spy Pond Project Team:

Town of Arlington Working Group:

Lela Shepherd, Environmental Planner/Conservation Agent,
lshpherd@town.arlington.ma.us

Bill Copithorne, Assistant Town Engineer,
bcopithorne@town.Arlington.ma.us

Jon Marshall, Director of Park and Recreation,
jrmarshall@town.arlington.ma.us

Cathy Garnett, Conservation Commission

Leslie Mayer, Park and Recreation Commission

Don Vitters, Park and Recreation Commission

Karen L. Grossman, Friends of Spy Pond Park

Hatch Chester:

Duke Bitsko, Principal-in-Charge, duke.bitsko@hatch.com

Hilary Holmes, Project Manager, hilary.holmes@hatch.com

Ginna Johnson, Landscape Architect, ginna.johnson@hatch.com



Town of Arlington
HATCH

Project Team
Spy Pond Edge & Erosion Control Final Design

Project Goals

- 1. Preserve, stabilize & strengthen the pond's shoreline**
- 2. Control bank erosion**
- 3. Protect & enhance wildlife habitat**
- 4. Control access to prevent unauthorized paths**
- 5. Encourage commitment from constituency groups**
- 6. Increase water quality & opportunity for water use**
- 7. Promote stormwater infiltration along the shoreline**
- 8. Implement environmental education**



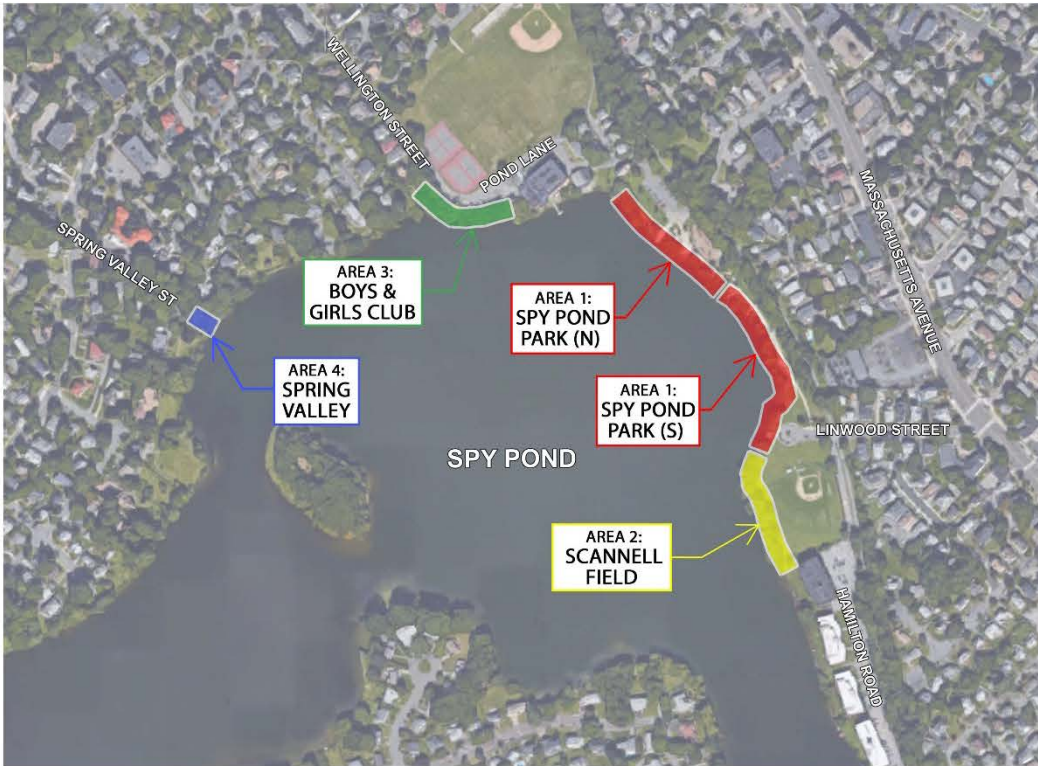
Spy Pond Edge & Erosion Control Project - Phase 2
Proposed Schedule

Prepared for: Town of Arlington
Prepared By: Hatch
Last Updated: 4/9/18

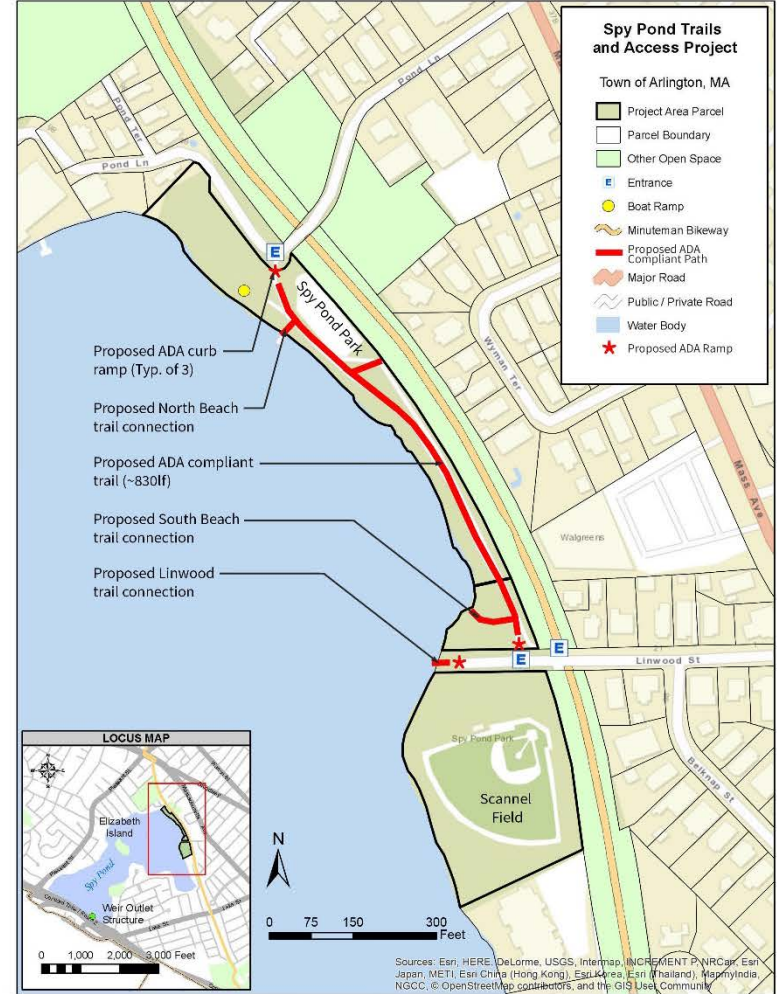
Task: Permitting (36 weeks)	2018												2019	
	Jan	Feb	March	April	May	June	July	Aug	Sept	Oct	Nov	Dec	Jan	Feb
MEPA Environmental Notification Form														
MA DEP Chapter 91 Waterways License Application														
Town of Arlington/MA DEP Notice of Intent Application														
USACE 404 General Permit/ MA DEP 401 Water Quality Permit/NHESP Coord														

- ▲ Site Visit
- Meeting with Town Working Group or Permitting Agency
- ★ Document Submission
- Public Meeting

Project Schedule

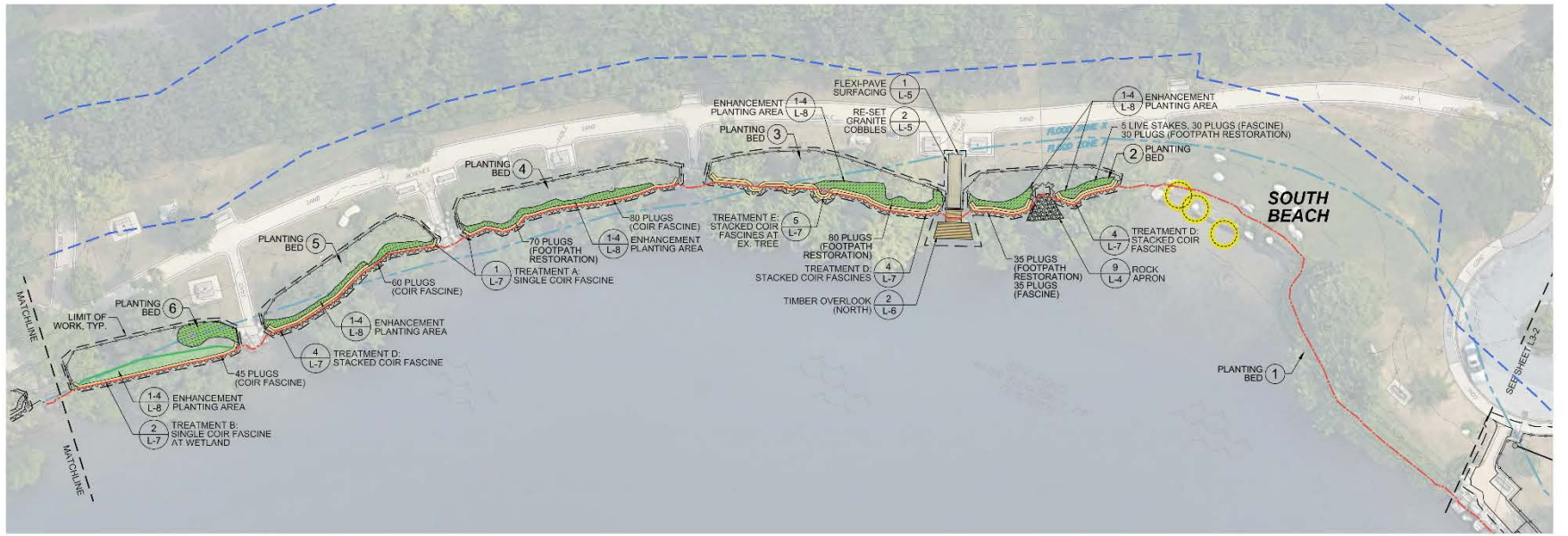
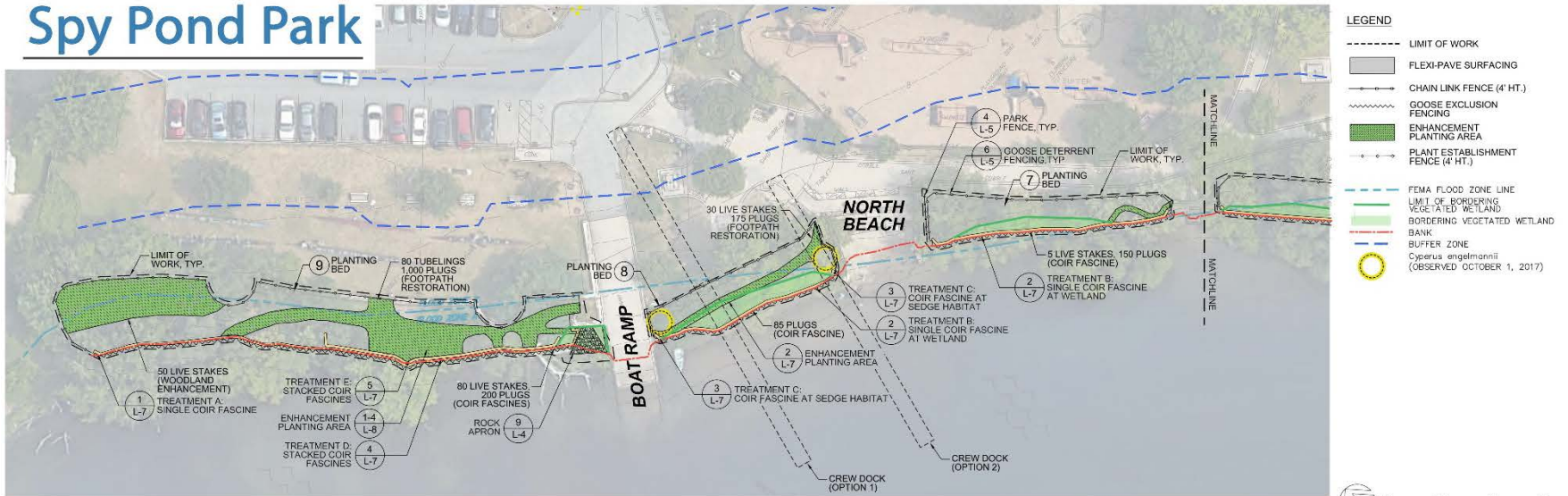


Project Area



Future Trailwork (Separate Phase)

Spy Pond Park



Spy Pond Park



Existing Conditions



Existing Conditions



Existing Conditions



Goose Deterrent Fence



Overlook Railing



Flexible Porous Surfacing



Riprap Outlet Protection



Park Fence



Overlook Location



Timber Overlook



Single Coir Fascine



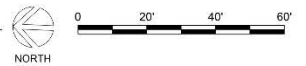
Double Coir Fascine



Scannell Field



AREA 2: SCANNELL FIELD



Town of Arlington
HATCH

Spy Pond Edge & Erosion Control **Final Design**

Scannell Field



Existing Conditions



Existing Conditions



Overlook Railing



Flexible Porous Paving



Chainlink Fence



Plant Establishment Fence



Overlook Location



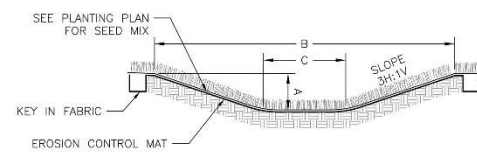
Timber Overlook



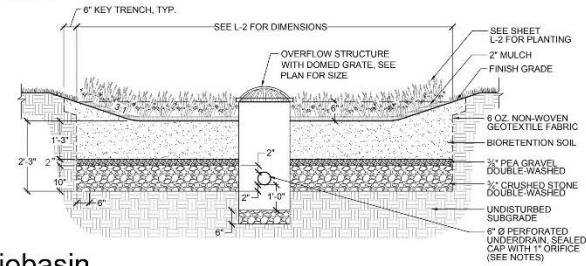
Single Coir Fascine



Double Coir Fascine



Swale



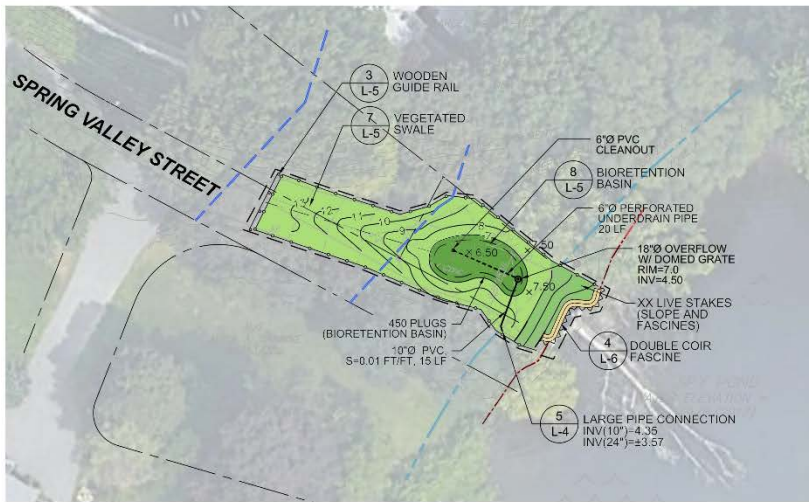
Biobasin



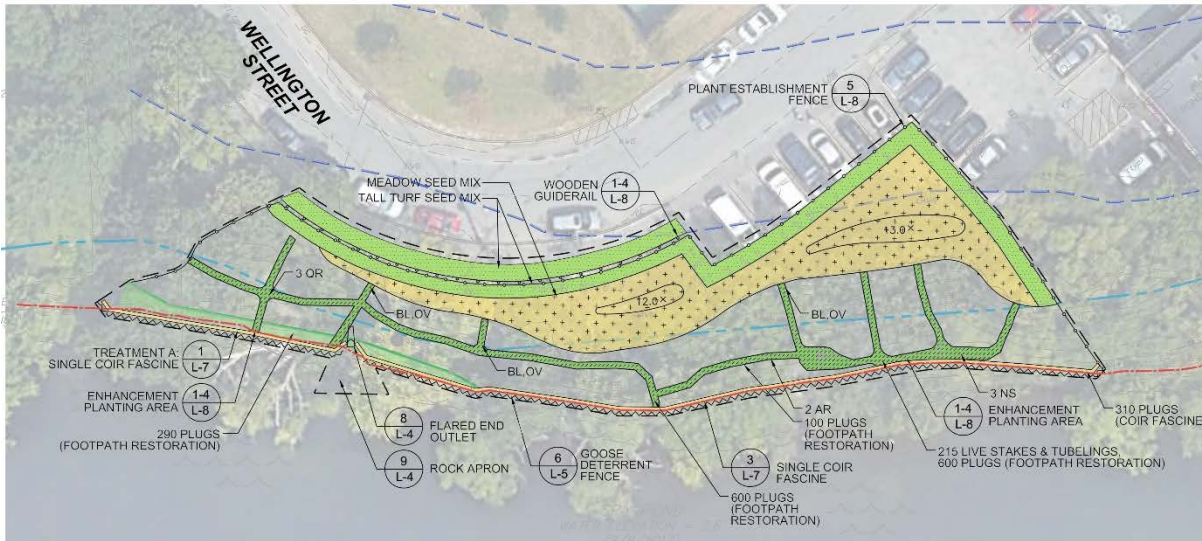
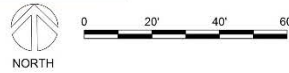
Boys & Girls Club, Spring Valley

LEGEND

- PROPERTY LINE
- - - - - LIMIT OF WORK
- ▒ FLEXI-PAVE SURFACING
- CHAIN LINK FENCE (4' HT.)
- ~ GOOSE EXCLUSION FENCING
- ▒ ENHANCEMENT PLANTING AREA
- ▒ PLUG PLANTING
- ▒ MEADOW SEED MIX
- ▒ TALL TURF SEED MIX
- ▒ LAWN SEED MIX
- PLANT ESTABLISHMENT FENCE (4' HT.)
- FEMA FLOOD ZONE LINE
- LIMIT OF BORDERING VEGETATED WETLAND
- BORDERING VEGETATED WETLAND BANK
- BUFFER ZONE



AREA 4: SPRING VALLEY



AREA 3: BOYS AND GIRLS CLUB



Boys & Girls Club



Existing Conditions



Existing Conditions



Plant Establishment Fence



Timber Guiderail



Rock Apron



Meadow



Single Coir Fascine

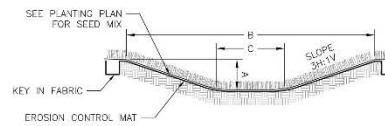
Spring Valley



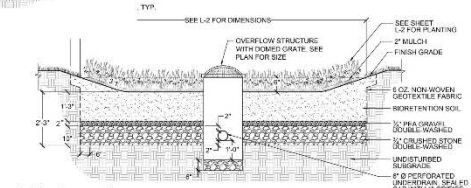
Existing Conditions



Existing Conditions



Swale



Biobasin



Timber Guiderail



Double Coir Fascine

