

PROJECT DESCRIPTION

GOALS:

What are the goals of the proposed project?

The School Department would like to engage in a planning process that will enable us to improve and maximize our use of Hardy Elementary School's outdoor recreational space. The Department is requesting funds to conduct a site analysis of the Hardy Elementary playground and study the feasibility of improving opportunities for outdoor learning and play. The study, to be conducted by a landscape architecture firm, will examine the main playground, which is bounded by Chandler Street and Herbert Street.

Enrollment at the Hardy School has grown rapidly in recent years, and that growth has necessitated a six-classroom addition. This change to the building's footprint will significantly affect the playground, which is already inadequate for the current population. The outdoor space needs are urgent, and because the current surface of the playground will be damaged during construction, it would be most efficient to reconsider the Hardy campus in conjunction with the building project and implement changes immediately following construction. In addition to serving Hardy students, the playground is a heavily used community resource.

The School Department has worked closely with Finegold Alexander to arrive at a design concept for the addition that will accommodate the school's growing population, complement the existing building, take into account the social and emotional needs of students, and make the school more conducive to 21st century learning. This study would offer an exciting opportunity to engage in a thoughtful process that would ensure that Hardy's outdoor recreational space is reimagined just as thoughtfully. Outdoor space—used for both recess and Physical Education—is an essential part of the overall success of this expansion project.

This final application represents a substantive change from our preliminary application. The CPA Committee has made it clear that this is an acceptable change. We appreciate this flexibility.

As part of the study, the selected firm would:

- Coordinate with Finegold Alexander, the designer of Hardy's six-room addition. Construction is slated to start in spring of 2018. The likely completion date is January 2019. Finegold Alexander completed a study of existing conditions at the site in August 2017 (see Appendix 1), which provides important information for the study.
- Document and analyze the state of current equipment, landscaping, surfaces, and fencing on the Chandler Street playground.
- Analyze how the Lake Street playground plan addresses outdoor needs and factor this into Chandler Street concepts.

- Assess existing drainage in the playground area and identify opportunities to improve/accommodate runoff. Finegold Alexander has probably worked on this to some extent as it relates to the addition, so it will be important to coordinate with them.
- Assess current plantings and trees that are located on the current playground or provide shade to the playground. Consult with the town's tree warden on guidelines for plantings in design.
- Prioritize use of materials and plantings that will mitigate the heat island effect of the playground area and decrease storm water runoff.
- Assess the playground's access points and evaluate how they interact with flow/circulation in the recreational area.
- Seek detailed input from school administrators, staff, and teachers, including PE teachers and the district's Director of Guidance and Social Emotional Learning.
- In collaboration with Hardy's School Council, facilitate a robust public input process that engages Hardy students, parents, abutters, and other community members. Public sessions should be held at several different stages of the process.
- Develop and present concept alternatives, including changes to playground configuration, equipment, and surfaces.
- Based on input, develop a design for the Chandler Street playground.
- Produce construction documents for the playground.
- Ensure that architects have vetted all landscape plans with the designer of the overall campus and playground so work is not duplicated and the resulting design is cohesive.
- Develop estimated costs for engineering, construction, and project management and suggestions for project phasing. Work on the phasing plan in conjunction with Finegold Alexander.
- Assist with documentation required to secure project funding for implementation of the plan from potential sources (Town of Arlington Capital, CPA, state and/or federal grants).

COMMUNITY NEED:

Why is the project needed? Does it address needs identified in existing Town plans?

The existing Chandler Street playground was designed and installed as part of the 2001 renovation of the school. When the equipment was chosen and land use was determined, 270 students were enrolled. In the 2017-18 academic year, 457 students are enrolled. The school has experienced a population increase of 69% with no significant change in playground equipment or outdoor space configuration. In recent years, the increasing population has surpassed the limits of the playground. The 2015-16 school year was the last year all classes used the Chandler Street playground without safety concerns from teachers and administrators. The Hardy School is the only one of our seven elementary schools that is not adjacent to a town park or field. There is no field to play on during recess or PE, and no room for overflow. Enrollment forecasts predict continued growth during the next several years (Appendix 2).

In the fall of 2016, administrators and teachers tried using the small yard that runs along Lake Street for recess for half of kindergarten classes. However, the space became too muddy to use

by late fall. As a result, kindergarten classes had to split outdoor recess blocks, reducing outdoor recess time for kindergartners. In the fall of 2017, the town made improvements to the Lake Street yard, adding wood chips and installing a taller temporary fence. Two kindergarten classes at a time are currently able to use the space, but equipment is minimal. The town plans to design and build a permanent playground in the Lake Street yard. The amount of \$200,000 is allocated for the project in the FY2019 Capital Plan. The relatively small yard is expected to accommodate two classes (about 40-50 students) at a time. Design work is underway, with an expected completion date of September 2018.

The building expansion will require the removal of the existing kindergarten play structure on the Chandler Street playground. The Lake Street playground will therefore *replace* the play area that will be lost to construction, but there is *no net gain* of play space, which means that changes must be made to the main playground in order to safely accommodate the current and projected student body.

The challenges of school enrollment growth are outlined in chapter nine of the Town of Arlington's Master Plan. The plan emphasizes the need to consider outdoor space when evaluating facilities: "In addition to looking at the physical layout of space, an assessment of the environmental quality, such as daylight and the availability of fresh air, and the adequacy of grounds that support municipal and school facilities, should be considered." (p. 169)

A substantial majority of the recreational space is impervious blacktop surface, including a full basketball court, two half-courts, and a large open area. Half of the smaller area currently surfaced with wood chips will be lost to the building project. In chapter eight of the town's Master Plan, it is noted that "a significant portion of the town (41.4 percent) is covered with impervious surfaces—mainly buildings and pavement—which impede the land's ability to absorb and disperse rainwater." (p. 132) The town can lead on changing this with careful attention to its properties.

The Arlington Tree Committee recently undertook a tree inventory, and students at Boston University analyzed the data and generated maps showing surface temperature, population density, and tree canopy (Appendix 3). The Hardy School is part of a heat island in one of the most densely populated areas of town, and the current playground design is a significant factor. According to the [Environmental Protection Agency](#), "The term 'heat island' describes built up areas that are hotter than nearby rural areas. ...Heat islands can affect communities by increasing summertime peak energy demand, air conditioning costs, air pollution and greenhouse gas emissions, heat-related illness and mortality, and water quality." Research published in the [Journal of Epidemiology and Community Health](#) suggests that an increase in tree density is associated with a lower prevalence of early childhood asthma. One of the EPA's suggested strategies for heat island mitigation is tree planting. Careful evaluation of opportunities to develop the tree canopy of the Hardy playground would improve the climate in the recreational area, inside the building, and in the neighborhood at large. In addition to plantings, the surfaces used on a redesigned Hardy playground could be carefully chosen to mitigate the heat island effect.

Finally, a number of parents have expressed concern that the current playground does not equally serve all students. Social, emotional, and wellness support is a central aspect of our district goals, and this support is important during recess as well as in the classroom. A study would help us explore how we might best serve all of our students in our playground design. The School Department and members of the Hardy community would like to investigate a more varied mix of surfaces, equipment, and thoughtfully designed play areas for Hardy's recreational space. Outdoor play is an important part of our students' day, and it has tremendous benefits for cognitive function as well as social and emotional regulation.

Enrollment growth has created a sense of urgency for this study, but it's also important to note that outside of school hours, the Hardy playground is a heavily used resource in a densely populated part of town with limited park space. A reimagining of the playground would serve the wider community, in keeping with CPA goals.

COMMUNITY SUPPORT:

What is the nature and level of support for this project? Include letters of support and any petitions.

The Hardy community enthusiastically supports an outdoor space study. Teachers, parents, and administrators are in agreement that the current space is not adequate for the current population and would welcome the opportunity to give input in a redesign.

In June 2017, Hardy parents collected 201 signatures from parents on a petition (Appendix 4) they sent to the school department and School Committee voicing concerns about Hardy's outdoor space and asking that:

“Creative, forward-thinking ideas for the future of the Chandler Street play area...be considered as part of this construction project. ...We know that the playground space we have now is inadequate for this year's population of approximately 450 students. Projections indicate that Hardy will have about 40 additional students within three years. Simply replacing the already-crowded play structure that will be lost to construction with a new one on the Lake Street side will not sufficiently increase playground capacity, and it will do nothing to make the Chandler Street side a vibrant space with multiple play opportunities. Playground capacity and usability at Hardy have become an issue of parity.

With this in mind, we urge you to consider how the large blacktop area could be reconfigured to keep a basketball court and space for other games but also offer space for other types of play. ...We request that multiple options be explored to make the most of the space we have, both during and after construction. As a parent community, we view the upcoming expansion as the appropriate time—for financial and programmatic reasons—to make needed improvements

to the function of the whole school, which includes classrooms, common space, and outdoor space.

As we work toward meeting our enrollment challenges, we see the current moment as a chance to look holistically at the way our outdoor space contributes to our children's social learning and overall educational experience.

This application is supported by the Hardy School Council, which is made up of the school principal (Kristin DeFrancisco), three Hardy teachers, and four parents of Hardy students. The council has been involved in the building design process and is responsible for outreach to the school community about the addition.

This application is also supported by the Executive Board of the Hardy School Parent Teacher Association. The PTO plans to raise funds to eventually help in purchasing playground equipment (details are included in their letter).

In addition, this application is unanimously supported by the Arlington School Committee. Facilities Subcommittee Chair and former Hardy parent Jennifer Susse has also provided a personal letter of support. Joseph Curro, Jr. has also provided a letter of support.

All letters of support are included as Appendix 8.

PROJECT DOCUMENTATION:

Attach any applicable engineering plans, architectural drawings, site plans, photographs, any other renderings, relevant studies or material.

- In August of 2017, Nitsch Engineering completed an Existing Condition Survey of the entire Hardy property. This comprehensive study was completed for Finegold Alexander in preparation for designing the addition. It includes topography, boundary marks, and locations of utilities (Appendix 1).
- The executive board of the Hardy PTO has prepared a presentation to aid the committee in visually understanding Hardy's population growth, outdoor space, and current use and plans (Appendix 5). It includes many photographs of the campus.
- A press release with an illustration of the design concept for the addition from Finegold Alexander is included (Appendix 6).

TIMELINE:

What is the schedule for project implementation, including a timeline for all critical milestones?

The study would take approximately six months from the start date, in July 2018.

- If the application is successful, Town Meeting Approval - May 2018
- Town issues RFP and selects landscape architecture firm - May/June 2018
- CPA funds available - 1 July 2018
- Coordination with the Recreation Department in the development of the plan. – July 2018
- Coordination with Finegold Alexander and examination of existing plans and information - July 2018
- Engagement with administrators and Hardy teachers (surveys, interviews) - August 2018
- Public meeting (community visioning session) - September 2018
- Development of concept alternatives and presentation and feedback at public meeting - October/November 2018
- Recommendations/cost estimates and phasing plan/public meeting - December 2018
- Construction documents completed – December 2018/ January 2019

CREDENTIALS:

How will the experience of the applicant contribute to the success of this project?

The School Department has built and maintained many school playgrounds as the town has designed and executed rebuilds or renovations of all seven elementary schools during the past sixteen years. We have recently strengthened our relationship and collaboration with the town's Parks and Recreation Department so we can work together to evaluate and maintain all of our school playgrounds year round.

The School Department has extensive experience working with design firms to execute studies and designs for complex school building projects. We also coordinate with and draw on the expertise of other town employees and committees. A space study of the Hardy playground will be a natural extension of our work on school building projects.

BUDGET:

What is the total budget for the project and how will funds be sourced and spent? All items of expenditure must be clearly identified. Distinguish between hard and soft costs and contingencies. (NOTE: CPA funds may not be used for maintenance.)

Feasibility study - \$39,500 total

Estimates for study components:

Site analysis and coordination with Finegold Alexander - \$4,000

Public engagement process - \$8,000

Conceptual designs - \$6,500

Design Development and final report - \$9,500

Construction documents - \$11,500

OTHER FUNDING:

What additional funding sources are available, committed, or under consideration? Include commitment letters, if available, and describe any other attempts to secure funding for this project.

There are no other designated funds for this project.

MAINTENANCE:

If ongoing maintenance is required for your project, how will it be funded?

Ongoing maintenance will be funded through the existing Town mechanism for funding playground maintenance.

IMPACT ON TOWN BUDGET:

What, if any, potential secondary effects will your proposed project have on the Town's Operating Budget? Are there any capital projects that rely on the successful completion of your project?

The Capital Planning Committee has added a placeholder amount of \$300,000 to the Capital Budget for FY2020. This funding has not yet been approved by Town Meeting. This placeholder allocation would allow the Town and School Department to construct a reimagined Chandler Street playground. The budget allocation amount would be updated after the results of the study proposed in this application. The Hardy PTO also plans to raise funds to make a contribution for some equipment, but it will be a relatively small percentage of the budget amount.

ADDITIONAL INFORMATION

CONTROL OF SITE:

The School Department controls the property. See property card (Appendix 7.)

DEED RESTRICTIONS: N/A

ACQUISITIONS: N/A

FEASIBILITY: N/A

HAZARDOUS MATERIALS: N/A

PERMITTING: N/A

ENVIRONMENTAL CONCERNS:

Identify all known wetlands, floodplains, and/or any natural resource limitation that occur within the boundaries of your submission.

None.

PROFESSIONAL STANDARDS:

Evidence that appropriate professional standards will be followed if construction, restoration or rehabilitation is proposed. Evidence that the applicant and the project team have the proven or potential capacity to conduct the scope and scale of the proposed project, as evidenced by project leaders with appropriate qualifications and technical experience or access to technical expertise.

- The project will be managed by School Department CFO John Danizio and the town's Director of Facilities. They will work closely with Recreation Director Jon Marshall.
- The project will be awarded to a landscape architecture firm with appropriate capabilities.
- The study cost estimate was developed in consultation with Assistant Town Manager Jim Feeney, who has extensive experience with feasibility studies. The budget number has been verified by a volunteer who is a landscape designer and certified playground safety inspector who visited the site.

FURTHER ATTACHMENTS:

- Appendix 1: Existing Conditions Survey of Hardy School (p. 1)
- Appendix 2: Update to Enrollment Forecast, December 2015 (p. 3)
- Appendix 3: Heat Map with Hardy Pinpointed (p. 6)
- Appendix 4: Petition from Hardy Parents (p. 7)
- Appendix 5: Presentation from the Hardy PTO Executive Board (p. 26)
- Appendix 6: Press Release from Finegold Alexander on Hardy Addition Design (p. 43)
- Appendix 7: Assessor's Map and Property Card for Hardy School (p. 44)
- Appendix 8: Letters of Support (p. 47)

Community Preservation Committee Town of Arlington

CPA Funding – FY2019 Final Application

One (1) electronic copy and three (3) hard copies of the completed Application must be submitted to the CPAC no later than noon on **Friday, December 8, 2017 in order to be considered for the 2018 Annual Town Meeting**, with the electronic copy sent to AFidalgo@town.arlington.ma.us and the hard copies to:

Community Preservation Committee c/o Amy Fidalgo
Town of Arlington, 730 Massachusetts Ave., Arlington, MA 02476

Applications will be date stamped and assigned control numbers in the order that the hard copies are received.


Project Title Hardy Elementary School Playground Study

Applicant/Contact Person Kathleen Bodie, Ed. D., Superintendent of Schools

Organization Arlington Public Schools

Mailing Address 869 Massachusetts Avenue, Arlington, MA 02476

Telephone 781-316-3502 **E-mail** kbodie@arlington.k12.ma.us

Signature  **Date** December 1, 2017

CPA Category (*select one*):

Community Housing Historic Preservation Open Space Recreation

Amount Requested \$50,000

Total Project Cost \$50,000

PROJECT DESCRIPTION

GOALS:

What are the goals of the proposed project?

The School Department would like to engage in a holistic planning process that will enable us to improve and maximize our use of Hardy Elementary School's outdoor space. The Department is requesting funds to conduct a site analysis of the Hardy Elementary grounds/campus and study the feasibility of improving opportunities for outdoor learning and play. The study, to be conducted by a landscape architecture firm, will focus on the main playground, which is bounded by Chandler Street and Herbert Street.

Enrollment at the Hardy School has grown rapidly in recent years, and that growth has necessitated a six-classroom addition. This change to the building's footprint will significantly affect the playground, which is already inadequate for the current population. The outdoor space needs are urgent, and because the current surface of the playground will be damaged during construction, it would be most efficient to reconsider the Hardy campus in conjunction with the building project and implement changes immediately following construction. In addition to serving Hardy students, the playground is a heavily used community resource.

The School Department has worked closely with Finegold Alexander to arrive at a design concept for the addition that will accommodate the school's growing population, complement the existing building, take into account the social and emotional needs of students, and make the school more conducive to 21st century learning. This study would offer an exciting opportunity to engage in a thoughtful process that would ensure that Hardy's outdoor space is reimagined just as thoughtfully. Outdoor space—used for both recess and Physical Education—is an essential part of the overall success of this expansion project.

This final application represents a substantive change from our preliminary application. The CPA Committee has made it clear that this is an acceptable change. We appreciate this flexibility.

As part of the study, the selected firm would:

- Coordinate with Finegold Alexander, the designer of Hardy's six-room addition. Construction is slated to start in spring of 2018. The likely completion date is January 2019. Finegold Alexander completed a study of existing conditions at the site in August 2017 (see Appendix 1), which provides important information for the study.
- Document and analyze the state of current equipment, landscaping, surfaces, and fencing.
- Analyze how the Lake Street playground plan addresses outdoor needs and factor this into Chandler Street concepts.

- Assess existing drainage and identify opportunities to improve/accommodate additional runoff from the increased building footprint. Finegold Alexander has probably worked on this to some extent as it relates to the addition, so it will be important to coordinate with them.
- Assess current plantings and trees. Consult with the town's tree warden on guidelines for plantings in design.
- Prioritize use of materials and plantings that will mitigate the heat island effect and decrease stormwater runoff.
- Assess entrances and access points of the building and playground and evaluate flow/circulation.
- Seek detailed input from school administrators, staff, and teachers, including PE teachers and the district's Director of Guidance and Social Emotional Learning.
- In collaboration with Hardy's School Council, facilitate a robust public input process that engages Hardy students, parents, abutters, and other community members. Public sessions should be held at several different stages of the process.
- Develop and present concept alternatives, including changes to configuration, equipment, and surfaces.
- Based on input, develop a preferred alternative concept.
- Ensure that architects have vetted all landscape plans with the designer of the overall campus and playground so work is not duplicated and the resulting design is cohesive.
- Develop preliminary estimated costs for design, engineering, construction, and project management and suggestions for project phasing. Work on the phasing plan in conjunction with Finegold Alexander.
- Assist with documentation required to secure project funding for implementation of the plan from potential sources (Town of Arlington Capital, CPA, state and/or federal grants).

COMMUNITY NEED:

Why is the project needed? Does it address needs identified in existing Town plans?

The existing Chandler Street playground was designed and installed as part of the 2001 renovation of the school. When the equipment was chosen and land use was determined, 270 students were enrolled. In the 2017-18 academic year, 457 students are enrolled. The school has experienced a population increase of 69% with no significant change in playground equipment or outdoor space configuration. In recent years, the increasing population has surpassed the limits of the playground. The 2015-16 school year was the last year all classes used the Chandler Street playground without safety concerns from teachers and administrators. The Hardy School is the only one of our seven elementary schools that is not adjacent to a town park or field. There is no field to play on during recess or PE, and no room for overflow. Enrollment forecasts predict continued growth during the next several years (Appendix 2).

In the fall of 2016, administrators and teachers tried using the small yard that runs along Lake Street for recess for half of kindergarten classes. However, the space became too muddy to use by late fall. As a result, kindergarten classes had to split outdoor recess blocks, reducing

outdoor recess time for kindergartners. In the fall of 2017, the town made improvements to the Lake Street yard, adding wood chips and installing a taller temporary fence. Two kindergarten classes at a time are currently able to use the space, but equipment is minimal. The town plans to design and build a permanent playground in the Lake Street yard. The amount of \$120,000 is allocated for the project in the FY2019 Capital Plan. The design process has not yet begun, but the relatively small yard is expected to accommodate two classes (about 40-50 students) at a time. The expected completion date is September 2018.

The building expansion will require the removal of the existing kindergarten play structure on the Chandler Street playground. The Lake Street playground will therefore *replace* the play area that will be lost to construction, but there is *no net gain* of play space, which means that changes must be made to the main playground, or other areas of the campus, in order to safely accommodate the current and projected student body.

The challenges of school enrollment growth are outlined in chapter nine of the Town of Arlington's Master Plan. The plan emphasizes the need to consider outdoor space when evaluating facilities: "In addition to looking at the physical layout of space, an assessment of the environmental quality, such as daylight and the availability of fresh air, and the adequacy of grounds that support municipal and school facilities, should be considered." (p. 169)

A substantial majority of the main playground is impervious blacktop surface, including a full basketball court, two half-courts, and a large open area. Half of the smaller area currently surfaced with wood chips will be lost to the building project. In chapter eight of the town's Master Plan, it is noted that "a significant portion of the town (41.4 percent) is covered with impervious surfaces—mainly buildings and pavement—which impede the land's ability to absorb and disperse rainwater." (p. 132) The town can lead on changing this with careful attention to its properties.

The Arlington Tree Committee recently undertook a tree inventory, and students at Boston University analyzed the data and generated maps showing surface temperature, population density, and tree canopy (Appendix 3). The Hardy School is part of a heat island in one of the most densely populated areas of town. According to the [Environmental Protection Agency](#), "The term 'heat island' describes built up areas that are hotter than nearby rural areas. ...Heat islands can affect communities by increasing summertime peak energy demand, air conditioning costs, air pollution and greenhouse gas emissions, heat-related illness and mortality, and water quality." Research published in the [Journal of Epidemiology and Community Health](#) suggests that an increase in tree density is associated with a lower prevalence of early childhood asthma. One of the EPA's suggested strategies for heat island mitigation is tree planting. Careful evaluation of opportunities to develop the tree canopy at Hardy would improve the climate on the playground, inside the building, and in the neighborhood at large. In addition to plantings, the surfaces used on a redesigned Hardy campus could be carefully chosen to mitigate the heat island effect.

Finally, a number of parents have expressed concern that the current playground does not equally serve all students. Social, emotional, and wellness support is a central aspect of our district goals, and this support is important during recess as well as in the classroom. A study would help us explore how we might best serve all of our students in our playground design. The School Department and members of the Hardy community would like to investigate a more varied mix of surfaces, equipment, and thoughtfully designed play areas for the space. Outdoor play is an important part of our students' day, and it has tremendous benefits for cognitive function as well as social and emotional regulation.

Enrollment growth has created a sense of urgency for this study, but it's also important to note that outside of school hours, the Hardy playground is a heavily used resource in a densely populated part of town with limited park space. A reimagining of the playground would serve the wider community, in keeping with CPA goals.

COMMUNITY SUPPORT:

What is the nature and level of support for this project? Include letters of support and any petitions.

The Hardy community enthusiastically supports an outdoor space study. Teachers, parents, and administrators are in agreement that the current space is not adequate for the current population and would welcome the opportunity to give input in a redesign.

In June 2017, Hardy parents collected 201 signatures from parents on a petition (Appendix 4) they sent to the school department and School Committee voicing concerns about Hardy's outdoor space and asking that:

"Creative, forward-thinking ideas for the future of the Chandler Street play area...be considered as part of this construction project. ...We know that the playground space we have now is inadequate for this year's population of approximately 450 students. Projections indicate that Hardy will have about 40 additional students within three years. Simply replacing the already-crowded play structure that will be lost to construction with a new one on the Lake Street side will not sufficiently increase playground capacity, and it will do nothing to make the Chandler Street side a vibrant space with multiple play opportunities. Playground capacity and usability at Hardy have become an issue of parity.

With this in mind, we urge you to consider how the large blacktop area could be be reconfigured to keep a basketball court and space for other games but also offer space for other types of play. ...We request that multiple options be explored to make the most of the space we have, both during and after construction. As a parent community, we view the upcoming expansion as the appropriate time—for financial and programmatic reasons—to make needed improvements to the function of the whole school, which includes classrooms, common space, and outdoor space.

As we work toward meeting our enrollment challenges, we see the current moment as a chance to look holistically at the way our outdoor space contributes to our children's social learning and overall educational experience.

This application is supported by the Hardy School Council, which is made up of the school principal (Kristin DeFrancisco), three Hardy teachers, and four parents of Hardy students. The council has been involved in the building design process and is responsible for outreach to the school community about the addition.

This application is also supported by the Executive Board of the Hardy School Parent Teacher Association. The PTO plans to raise funds to eventually help in purchasing playground equipment (details are included in their letter).

In addition, this application is unanimously supported by the Arlington School Committee. Facilities Subcommittee Chair and former Hardy parent Jennifer Susse has also provided a personal letter of support. Joseph Curro, Jr. has also provided a letter of support.

All letters of support are included as Appendix 8.

PROJECT DOCUMENTATION:

Attach any applicable engineering plans, architectural drawings, site plans, photographs, any other renderings, relevant studies or material.

- In August of 2017, Nitsch Engineering completed an Existing Condition Survey of the entire Hardy property. This comprehensive study was completed for Finegold Alexander in preparation for designing the addition. It includes topography, boundary marks, and locations of utilities (Appendix 1).
- The executive board of the Hardy PTO has prepared a presentation to aid the committee in visually understanding Hardy's population growth, outdoor space, and current use and plans (Appendix 5). It includes many photographs of the campus.
- A press release with an illustration of the design concept for the addition from Finegold Alexander is included (Appendix 6).

TIMELINE:

What is the schedule for project implementation, including a timeline for all critical milestones?

The study would take approximately six months from the start date, in July 2018.

- If the application is successful, Town Meeting Approval - May 2018
- Town issues RFP and selects landscape architecture firm - May/June 2018
- CPA funds available - 1 July 2018

- Coordination with the Department of Parks and Recreation in the development of the plan. – July 2018
- Coordination with Finegold Alexander and examination of existing plans and information - July 2018
- Engagement with administrators and Hardy teachers (surveys, interviews) - August 2018
- Public meeting (community visioning session) - September 2018
- Development of concept alternatives and presentation and feedback at public meeting - October/November 2018
- Recommendations/cost estimates and phasing plan/public meeting - December 2018

CREDENTIALS:

How will the experience of the applicant contribute to the success of this project?

The School Department has built and maintained many school playgrounds as the town has designed and executed rebuilds or renovations of all seven elementary schools during the past sixteen years. We have recently strengthened our relationship and collaboration with the town's Parks and Recreation Department so we can work together to evaluate and maintain all of our school playgrounds year round.

The School Department has extensive experience working with design firms to execute studies and designs for complex school building projects. We also coordinate with and draw on the expertise of other town employees and committees. An outdoor space study will be a natural extension of our work on school building projects.

BUDGET:

What is the total budget for the project and how will funds be sourced and spent? All items of expenditure must be clearly identified. Distinguish between hard and soft costs and contingencies. (NOTE: CPA funds may not be used for maintenance.)

Feasibility study - \$50,000

OTHER FUNDING:

What additional funding sources are available, committed, or under consideration? Include commitment letters, if available, and describe any other attempts to secure funding for this project.

There are no other designated funds for this project.

MAINTENANCE:

If ongoing maintenance is required for your project, how will it be funded?

Ongoing maintenance will be funded through the Facilities. Department budget.

IMPACT ON TOWN BUDGET:

What, if any, potential secondary effects will your proposed project have on the Town's Operating Budget? Are there any capital projects that rely on the successful completion of your project?

The School Department has submitted a request for a placeholder amount of \$200,000 to be added to the Capital Budget for FY2020. This funding has not been approved yet by the Capital Planning Committee. This placeholder allocation would allow the Town and School Department to plan for a final design and construction of a reimagined Chandler Street playground. The budget allocation amount would be updated after the results of the study proposed in this application. The Hardy PTO also plans to raise funds to make a contribution for some equipment, but it will be a relatively small percentage of the budget amount.

ADDITIONAL INFORMATION

CONTROL OF SITE:

The School Department controls the property. See property card (Appendix 7.)

DEED RESTRICTIONS: N/A

ACQUISITIONS: N/A

FEASIBILITY: N/A

HAZARDOUS MATERIALS: N/A

PERMITTING: N/A

ENVIRONMENTAL CONCERNS:

Identify all known wetlands, floodplains, and/or any natural resource limitation that occur within the boundaries of your submission.

None.

PROFESSIONAL STANDARDS:

Evidence that appropriate professional standards will be followed if construction, restoration or rehabilitation is proposed. Evidence that the applicant and the project team have the proven or potential capacity to conduct the scope and scale of the proposed project, as evidenced by

project leaders with appropriate qualifications and technical experience or access to technical expertise.

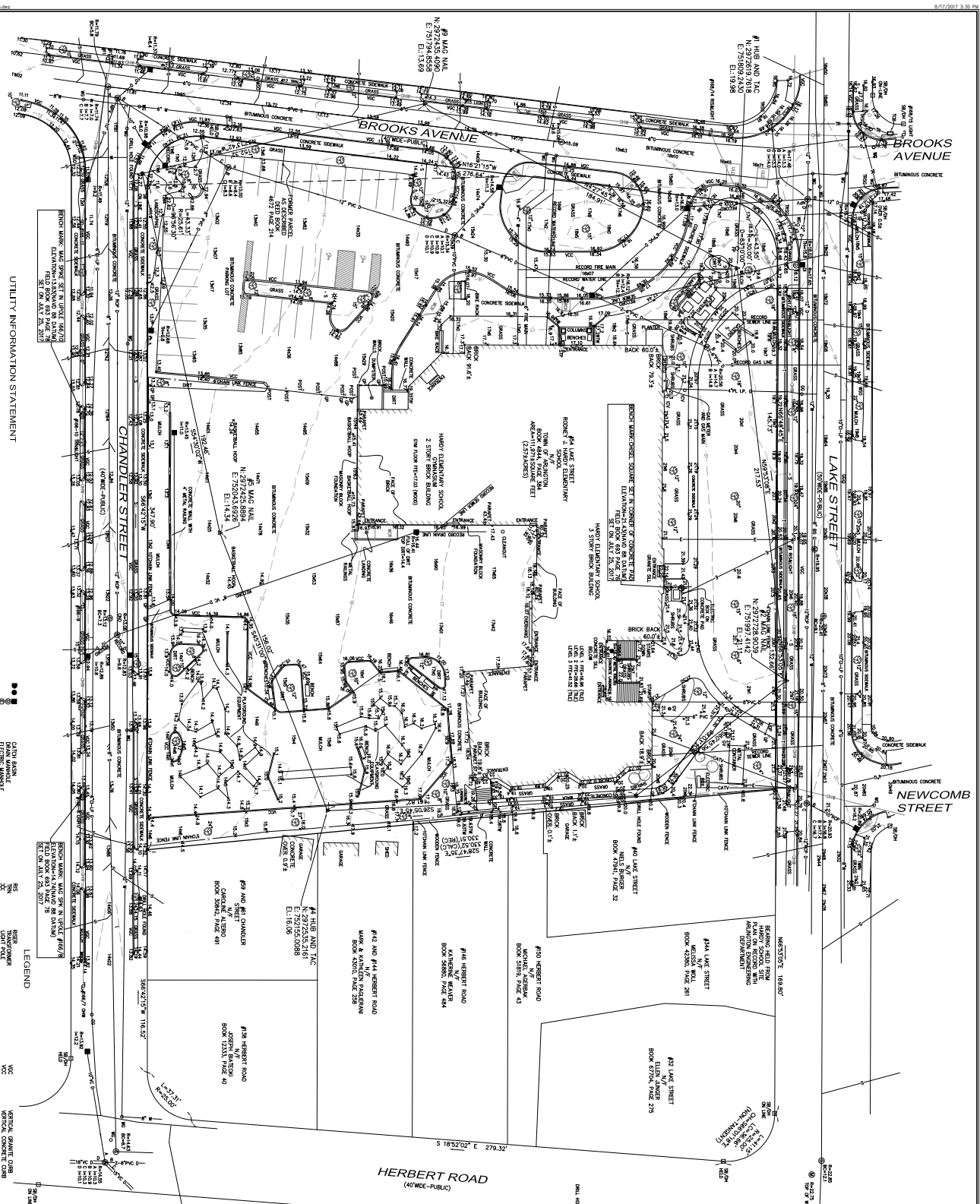
- The project will be managed by School Department CFO John Danizio, and the town's Director of Facilities. They will work closely with Department of Parks and Recreation Director Jon Marshall.
- The project will be awarded to a landscape architecture firm with appropriate capabilities.
- The study cost estimate was developed in consultation with Assistant Town Manager Jim Feeney, who has extensive experience with feasibility studies. The budget number has been verified by a volunteer who is a landscape designer and certified playground safety inspector who visited the site.

FURTHER ATTACHMENTS:

- Appendix 1: Existing Conditions Survey of Hardy School (p. 1)
- Appendix 2: Update to Enrollment Forecast, December 2015 (p. 3)
- Appendix 3: Heat Map with Hardy Pinpointed (p. 6)
- Appendix 4: Petition from Hardy Parents (p. 7)
- Appendix 5: Presentation from the Hardy PTO Executive Board (p. 26)
- Appendix 6: Press Release from Finegold Alexander on Hardy Addition Design (p. 43)
- Appendix 7: Assessor's Map and Property Card for Hardy School (p. 44)
- Appendix 8: Letters of Support (p. 47)

Appendix 1: Existing Conditions Survey of Hardy School

Prepared by Nitsch Engineering for Finegold Alexander, August 11, 2017



UTILITY INFORMATION STATEMENT

1. THE SHOWN UTILITIES ARE BASED ON THE RECORD DRAWINGS AND FIELD SURVEY INFORMATION. RECORD INFORMATION IS SHOWN BY THE APPROPRIATE UTILITY SYMBOLS AND ELEVATIONS. THE LOCATION OF UTILITIES IS SUBJECT TO ANY CHANGES THAT MAY OCCUR DURING THE CONSTRUCTION OF THE PROJECT. THE LOCATION OF UTILITIES IS SUBJECT TO ANY CHANGES THAT MAY OCCUR DURING THE CONSTRUCTION OF THE PROJECT.

2. THE LOCATION OF UTILITIES IS SUBJECT TO ANY CHANGES THAT MAY OCCUR DURING THE CONSTRUCTION OF THE PROJECT. THE LOCATION OF UTILITIES IS SUBJECT TO ANY CHANGES THAT MAY OCCUR DURING THE CONSTRUCTION OF THE PROJECT.

3. THE LOCATION OF UTILITIES IS SUBJECT TO ANY CHANGES THAT MAY OCCUR DURING THE CONSTRUCTION OF THE PROJECT. THE LOCATION OF UTILITIES IS SUBJECT TO ANY CHANGES THAT MAY OCCUR DURING THE CONSTRUCTION OF THE PROJECT.

4. THE STATUS OF UTILITIES, WHETHER ACTIVE, ABANDONED, OR REMOVED, IS UNKNOWN.

5. THE STATUS OF UTILITIES, WHETHER ACTIVE, ABANDONED, OR REMOVED, IS UNKNOWN.

6. THE STATUS OF UTILITIES, WHETHER ACTIVE, ABANDONED, OR REMOVED, IS UNKNOWN.

7. THE STATUS OF UTILITIES, WHETHER ACTIVE, ABANDONED, OR REMOVED, IS UNKNOWN.

8. THE STATUS OF UTILITIES, WHETHER ACTIVE, ABANDONED, OR REMOVED, IS UNKNOWN.

9. THE STATUS OF UTILITIES, WHETHER ACTIVE, ABANDONED, OR REMOVED, IS UNKNOWN.

10. THE STATUS OF UTILITIES, WHETHER ACTIVE, ABANDONED, OR REMOVED, IS UNKNOWN.

11. THE STATUS OF UTILITIES, WHETHER ACTIVE, ABANDONED, OR REMOVED, IS UNKNOWN.

12. THE STATUS OF UTILITIES, WHETHER ACTIVE, ABANDONED, OR REMOVED, IS UNKNOWN.

13. THE STATUS OF UTILITIES, WHETHER ACTIVE, ABANDONED, OR REMOVED, IS UNKNOWN.

14. THE STATUS OF UTILITIES, WHETHER ACTIVE, ABANDONED, OR REMOVED, IS UNKNOWN.

15. THE STATUS OF UTILITIES, WHETHER ACTIVE, ABANDONED, OR REMOVED, IS UNKNOWN.

16. THE STATUS OF UTILITIES, WHETHER ACTIVE, ABANDONED, OR REMOVED, IS UNKNOWN.

17. THE STATUS OF UTILITIES, WHETHER ACTIVE, ABANDONED, OR REMOVED, IS UNKNOWN.

18. THE STATUS OF UTILITIES, WHETHER ACTIVE, ABANDONED, OR REMOVED, IS UNKNOWN.

19. THE STATUS OF UTILITIES, WHETHER ACTIVE, ABANDONED, OR REMOVED, IS UNKNOWN.

20. THE STATUS OF UTILITIES, WHETHER ACTIVE, ABANDONED, OR REMOVED, IS UNKNOWN.

21. THE STATUS OF UTILITIES, WHETHER ACTIVE, ABANDONED, OR REMOVED, IS UNKNOWN.

22. THE STATUS OF UTILITIES, WHETHER ACTIVE, ABANDONED, OR REMOVED, IS UNKNOWN.

23. THE STATUS OF UTILITIES, WHETHER ACTIVE, ABANDONED, OR REMOVED, IS UNKNOWN.

24. THE STATUS OF UTILITIES, WHETHER ACTIVE, ABANDONED, OR REMOVED, IS UNKNOWN.

25. THE STATUS OF UTILITIES, WHETHER ACTIVE, ABANDONED, OR REMOVED, IS UNKNOWN.

LEGEND

1. WATER MAIN

2. SEWER MAIN

3. GAS MAIN

4. ELECTRIC MAIN

5. TELEPHONE MAIN

6. CABLE MAIN

7. FIBER OPTIC MAIN

8. RAINWATER MAIN

9. FIRE MAIN

10. AIR CONDITIONING MAIN

11. HEATING MAIN

12. COOLING MAIN

13. VENTILATION MAIN

14. EXHAUST MAIN

15. DRAINAGE MAIN

16. SANITARY MAIN

17. INDUSTRIAL MAIN

18. SPECIAL MAIN

19. UNKNOWN MAIN

20. ABANDONED MAIN

21. REMOVED MAIN

22. PROPOSED MAIN

23. EXISTING MAIN

24. NEW MAIN

25. REPAIR MAIN

26. REPLACE MAIN

27. ENLARGE MAIN

28. REDUCE MAIN

29. CHANGE MAIN

30. MOVE MAIN

31. DELETE MAIN

32. ADD MAIN

33. MODIFY MAIN

34. UPDATE MAIN

35. MAINTAIN MAIN

36. MONITOR MAIN

37. INSPECT MAIN

38. TEST MAIN

39. CALIBRATE MAIN

40. VERIFY MAIN

41. CONFIRM MAIN

42. VALIDATE MAIN

43. APPROVE MAIN

44. SIGN OFF MAIN

45. COMPLETE MAIN

46. FINISH MAIN

47. END MAIN

48. STOP MAIN

49. PAUSE MAIN

50. RESUME MAIN

51. CONTINUE MAIN

52. RESTART MAIN

53. RERUN MAIN

54. REPEAT MAIN

55. RECYCLE MAIN

56. REUSE MAIN

57. REPAIR MAIN

58. REPLACE MAIN

59. ENLARGE MAIN

60. REDUCE MAIN

61. CHANGE MAIN

62. MOVE MAIN

63. DELETE MAIN

64. ADD MAIN

65. MODIFY MAIN

66. UPDATE MAIN

67. MAINTAIN MAIN

68. MONITOR MAIN

69. INSPECT MAIN

70. TEST MAIN

71. CALIBRATE MAIN

72. VERIFY MAIN

73. CONFIRM MAIN

74. VALIDATE MAIN

75. APPROVE MAIN

76. SIGN OFF MAIN

77. COMPLETE MAIN

78. FINISH MAIN

79. END MAIN

80. STOP MAIN

81. PAUSE MAIN

82. RESUME MAIN

83. CONTINUE MAIN

84. RESTART MAIN

85. RERUN MAIN

86. REPEAT MAIN

87. RECYCLE MAIN

88. REUSE MAIN

89. REPAIR MAIN

90. REPLACE MAIN

91. ENLARGE MAIN

92. REDUCE MAIN

93. CHANGE MAIN

94. MOVE MAIN

95. DELETE MAIN

96. ADD MAIN

97. MODIFY MAIN

98. UPDATE MAIN

99. MAINTAIN MAIN

100. MONITOR MAIN

101. INSPECT MAIN

102. TEST MAIN

103. CALIBRATE MAIN

104. VERIFY MAIN

105. CONFIRM MAIN

106. VALIDATE MAIN

107. APPROVE MAIN

108. SIGN OFF MAIN

109. COMPLETE MAIN

110. FINISH MAIN

111. END MAIN

112. STOP MAIN

113. PAUSE MAIN

114. RESUME MAIN

115. CONTINUE MAIN

116. RESTART MAIN

117. RERUN MAIN

118. REPEAT MAIN

119. RECYCLE MAIN

120. REUSE MAIN

121. REPAIR MAIN

122. REPLACE MAIN

123. ENLARGE MAIN

124. REDUCE MAIN

125. CHANGE MAIN

126. MOVE MAIN

127. DELETE MAIN

128. ADD MAIN

129. MODIFY MAIN

130. UPDATE MAIN

131. MAINTAIN MAIN

132. MONITOR MAIN

133. INSPECT MAIN

134. TEST MAIN

135. CALIBRATE MAIN

136. VERIFY MAIN

137. CONFIRM MAIN

138. VALIDATE MAIN

139. APPROVE MAIN

140. SIGN OFF MAIN

141. COMPLETE MAIN

142. FINISH MAIN

143. END MAIN

144. STOP MAIN

145. PAUSE MAIN

146. RESUME MAIN

147. CONTINUE MAIN

148. RESTART MAIN

149. RERUN MAIN

150. REPEAT MAIN

151. RECYCLE MAIN

152. REUSE MAIN

153. REPAIR MAIN

154. REPLACE MAIN

155. ENLARGE MAIN

156. REDUCE MAIN

157. CHANGE MAIN

158. MOVE MAIN

159. DELETE MAIN

160. ADD MAIN

161. MODIFY MAIN

162. UPDATE MAIN

163. MAINTAIN MAIN

164. MONITOR MAIN

165. INSPECT MAIN

166. TEST MAIN

167. CALIBRATE MAIN

168. VERIFY MAIN

169. CONFIRM MAIN

170. VALIDATE MAIN

171. APPROVE MAIN

172. SIGN OFF MAIN

173. COMPLETE MAIN

174. FINISH MAIN

175. END MAIN

176. STOP MAIN

177. PAUSE MAIN

178. RESUME MAIN

179. CONTINUE MAIN

180. RESTART MAIN

181. RERUN MAIN

182. REPEAT MAIN

183. RECYCLE MAIN

184. REUSE MAIN

185. REPAIR MAIN

186. REPLACE MAIN

187. ENLARGE MAIN

188. REDUCE MAIN

189. CHANGE MAIN

190. MOVE MAIN

191. DELETE MAIN

192. ADD MAIN

193. MODIFY MAIN

194. UPDATE MAIN

195. MAINTAIN MAIN

196. MONITOR MAIN

197. INSPECT MAIN

198. TEST MAIN

199. CALIBRATE MAIN

200. VERIFY MAIN

201. CONFIRM MAIN

202. VALIDATE MAIN

203. APPROVE MAIN

204. SIGN OFF MAIN

205. COMPLETE MAIN

206. FINISH MAIN

207. END MAIN

208. STOP MAIN

209. PAUSE MAIN

210. RESUME MAIN

211. CONTINUE MAIN

212. RESTART MAIN

213. RERUN MAIN

214. REPEAT MAIN

215. RECYCLE MAIN

216. REUSE MAIN

217. REPAIR MAIN

218. REPLACE MAIN

219. ENLARGE MAIN

220. REDUCE MAIN

221. CHANGE MAIN

222. MOVE MAIN

223. DELETE MAIN

224. ADD MAIN

225. MODIFY MAIN

226. UPDATE MAIN

227. MAINTAIN MAIN

228. MONITOR MAIN

229. INSPECT MAIN

230. TEST MAIN

231. CALIBRATE MAIN

232. VERIFY MAIN

233. CONFIRM MAIN

234. VALIDATE MAIN

235. APPROVE MAIN

236. SIGN OFF MAIN

237. COMPLETE MAIN

238. FINISH MAIN

239. END MAIN

240. STOP MAIN

241. PAUSE MAIN

242. RESUME MAIN

243. CONTINUE MAIN

244. RESTART MAIN

245. RERUN MAIN

246. REPEAT MAIN

247. RECYCLE MAIN

248. REUSE MAIN

249. REPAIR MAIN

250. REPLACE MAIN

251. ENLARGE MAIN

252. REDUCE MAIN

253. CHANGE MAIN

254. MOVE MAIN

255. DELETE MAIN

256. ADD MAIN

257. MODIFY MAIN

258. UPDATE MAIN

259. MAINTAIN MAIN

260. MONITOR MAIN

261. INSPECT MAIN

262. TEST MAIN

263. CALIBRATE MAIN

264. VERIFY MAIN

265. CONFIRM MAIN

266. VALIDATE MAIN

267. APPROVE MAIN

268. SIGN OFF MAIN

269. COMPLETE MAIN

270. FINISH MAIN

271. END MAIN

272. STOP MAIN

273. PAUSE MAIN

274. RESUME MAIN

275. CONTINUE MAIN

276. RESTART MAIN

277. RERUN MAIN

278. REPEAT MAIN

279. RECYCLE MAIN

280. REUSE MAIN

281. REPAIR MAIN

282. REPLACE MAIN

283. ENLARGE MAIN

284. REDUCE MAIN

285. CHANGE MAIN

286. MOVE MAIN

287. DELETE MAIN

288. ADD MAIN

289. MODIFY MAIN

290. UPDATE MAIN

291. MAINTAIN MAIN

292. MONITOR MAIN

293. INSPECT MAIN

294. TEST MAIN

295. CALIBRATE MAIN

296. VERIFY MAIN

297. CONFIRM MAIN

298. VALIDATE MAIN

299. APPROVE MAIN

300. SIGN OFF MAIN

301. COMPLETE MAIN

302. FINISH MAIN

303. END MAIN

304. STOP MAIN

305. PAUSE MAIN

306. RESUME MAIN

307. CONTINUE MAIN

308. RESTART MAIN

309. RERUN MAIN

310. REPEAT MAIN

311. RECYCLE MAIN

312. REUSE MAIN

313. REPAIR MAIN

314. REPLACE MAIN

315. ENLARGE MAIN

316. REDUCE MAIN

317. CHANGE MAIN

318. MOVE MAIN

319. DELETE MAIN

320. ADD MAIN

321. MODIFY MAIN

322. UPDATE MAIN

323. MAINTAIN MAIN

324. MONITOR MAIN

325. INSPECT MAIN

326. TEST MAIN

327. CALIBRATE MAIN

328. VERIFY MAIN

329. CONFIRM MAIN

330. VALIDATE MAIN

331. APPROVE MAIN

332. SIGN OFF MAIN

333. COMPLETE MAIN

334. FINISH MAIN

335. END MAIN

336. STOP MAIN

337. PAUSE MAIN

338. RESUME MAIN

339. CONTINUE MAIN

340. RESTART MAIN

341. RERUN MAIN

342. REPEAT MAIN

343. RECYCLE MAIN

344. REUSE MAIN

345. REPAIR MAIN

346. REPLACE MAIN

347. ENLARGE MAIN

348. REDUCE MAIN

349. CHANGE MAIN

350. MOVE MAIN

351. DELETE MAIN

352. ADD MAIN

353. MODIFY MAIN

354. UPDATE MAIN

355. MAINTAIN MAIN

356. MONITOR MAIN

357. INSPECT MAIN

358. TEST MAIN

359. CALIBRATE MAIN

360. VERIFY MAIN

361. CONFIRM MAIN

362. VALIDATE MAIN

363. APPROVE MAIN

364. SIGN OFF MAIN

365. COMPLETE MAIN

366. FINISH MAIN

367. END MAIN

368. STOP MAIN

369. PAUSE MAIN

370. RESUME MAIN

371. CONTINUE MAIN

372. RESTART MAIN

373. RERUN MAIN

374. REPEAT MAIN

375. RECYCLE MAIN

376. REUSE MAIN

377. REPAIR MAIN

378. REPLACE MAIN

379. ENLARGE MAIN

380. REDUCE MAIN

381. CHANGE MAIN

382. MOVE MAIN

383. DELETE MAIN

384. ADD MAIN

385. MODIFY MAIN

386. UPDATE MAIN

387. MAINTAIN MAIN

388. MONITOR MAIN

389. INSPECT MAIN

390. TEST MAIN

391. CALIBRATE MAIN

392. VERIFY MAIN

393. CONFIRM MAIN

394. VALIDATE MAIN

395. APPROVE MAIN

396. SIGN OFF MAIN

397. COMPLETE MAIN

398. FINISH MAIN

399. END MAIN

400. STOP MAIN

401. PAUSE MAIN

402. RESUME MAIN

403. CONTINUE MAIN

404. RESTART MAIN

405. RERUN MAIN

406. REPEAT MAIN

407. RECYCLE MAIN

408. REUSE MAIN

409. REPAIR MAIN

410. REPLACE MAIN

411. ENLARGE MAIN

412. REDUCE MAIN

413. CHANGE MAIN

414. MOVE MAIN

415. DELETE MAIN

416. ADD MAIN

417. MODIFY MAIN

418. UPDATE MAIN

419. MAINTAIN MAIN

420. MONITOR MAIN

421. INSPECT MAIN

422. TEST MAIN

423. CALIBRATE MAIN

424. VERIFY MAIN

425. CONFIRM MAIN

426. VALIDATE MAIN

427. APPROVE MAIN

428. SIGN OFF MAIN

429. COMPLETE MAIN

430. FINISH MAIN

431. END MAIN

432. STOP MAIN

433. PAUSE MAIN

434. RESUME MAIN

435. CONTINUE MAIN

436. RESTART MAIN

437. RERUN MAIN

438. REPEAT MAIN

439. RECYCLE MAIN

440. REUSE MAIN

441. REPAIR MAIN

442. REPLACE MAIN

443. ENLARGE MAIN

444. REDUCE MAIN

445. CHANGE MAIN

446. MOVE MAIN

447. DELETE MAIN

448. ADD MAIN

449. MODIFY MAIN

450. UPDATE MAIN

451. MAINTAIN MAIN

452. MONITOR MAIN

453. INSPECT MAIN

454. TEST MAIN

455. CALIBRATE MAIN

456. VERIFY MAIN

457. CONFIRM MAIN

458. VALIDATE MAIN

459. APPROVE MAIN

460. SIGN OFF MAIN

461. COMPLETE MAIN

462. FINISH MAIN

463. END MAIN

464. STOP MAIN

465. PAUSE MAIN

466. RESUME MAIN

467. CONTINUE MAIN

468. RESTART MAIN

469. RERUN MAIN

470. REPEAT MAIN

471. RECYCLE MAIN

472. REUSE MAIN

473. REPAIR MAIN

474. REPLACE MAIN

475. ENLARGE MAIN

476. REDUCE MAIN

477. CHANGE MAIN

478. MOVE MAIN

479. DELETE MAIN

480. ADD MAIN

481. MODIFY MAIN

482. UPDATE MAIN

483. MAINTAIN MAIN

484. MONITOR MAIN

485. INSPECT MAIN

486. TEST MAIN

487. CALIBRATE MAIN

488. VERIFY MAIN

489. CONFIRM MAIN

490. VALIDATE MAIN

491. APPROVE MAIN

492. SIGN OFF MAIN

493. COMPLETE MAIN

494. FINISH MAIN

495. END MAIN

496. STOP MAIN

497. PAUSE MAIN

498. RESUME MAIN

499. CONTINUE MAIN

500. RESTART MAIN

501. RERUN MAIN

502. REPEAT MAIN

503. RECYCLE MAIN

504. REUSE MAIN

505. REPAIR MAIN

506. REPLACE MAIN

507. ENLARGE MAIN

508. REDUCE MAIN

509. CHANGE MAIN

510. MOVE MAIN

511. DELETE MAIN

512. ADD MAIN

513. MODIFY MAIN

514. UPDATE MAIN

515. MAINTAIN MAIN

516. MONITOR MAIN

517. INSPECT MAIN

518. TEST MAIN

519. CALIBRATE MAIN

520. VERIFY MAIN

521. CONFIRM MAIN

522. VALIDATE MAIN

523. APPROVE MAIN

524. SIGN OFF MAIN

525. COMPLETE MAIN

526. FINISH MAIN

527. END MAIN

528. STOP MAIN

529. PAUSE MAIN

530. RESUME MAIN

531. CONTINUE MAIN

532. RESTART MAIN

533. RERUN MAIN

534. REPEAT MAIN

535. RECYCLE MAIN

536. REUSE MAIN

537. REPAIR MAIN

538. REPLACE MAIN

539. ENLARGE MAIN

540. REDUCE MAIN

541. CHANGE MAIN

542. MOVE MAIN

543. DELETE MAIN

544. ADD MAIN

545. MODIFY MAIN

546. UPDATE MAIN

547. MAINTAIN MAIN

548. MONITOR MAIN

549. INSPECT MAIN

550. TEST MAIN

551. CALIBRATE MAIN

552. VERIFY MAIN

553. CONFIRM MAIN

554. VALIDATE MAIN

555. APPROVE MAIN

556. SIGN OFF MAIN

557. COMPLETE MAIN

558. FINISH MAIN

559. END MAIN

560. STOP MAIN

561. PAUSE MAIN

562. RESUME MAIN

563. CONTINUE MAIN

564. RESTART MAIN

565. RERUN MAIN

566. REPEAT MAIN

567. RECYCLE MAIN

568. REUSE MAIN

569. REPAIR MAIN

570. REPLACE MAIN

571. ENLARGE MAIN

572. REDUCE MAIN

573. CHANGE MAIN

574. MOVE MAIN

575. DELETE MAIN

576. ADD MAIN

577. MODIFY MAIN

578. UPDATE MAIN

579. MAINTAIN MAIN

580. MONITOR MAIN

581. INSPECT MAIN

582. TEST MAIN

583. CALIBRATE MAIN

584. VERIFY MAIN

585. CONFIRM MAIN

586. VALIDATE MAIN

587. APPROVE MAIN

588. SIGN OFF MAIN

589. COMPLETE MAIN

590. FINISH MAIN

591. END MAIN

592. STOP MAIN

593. PAUSE MAIN

594. RESUME MAIN

595. CONTINUE MAIN

596. RESTART MAIN

597. RERUN MAIN

598. REPEAT MAIN

599. RECYCLE MAIN

600. REUSE MAIN

601. REPAIR MAIN

602. REPLACE MAIN

603. ENLARGE MAIN

604. REDUCE MAIN

605. CHANGE MAIN

606. MOVE MAIN

607. DELETE MAIN

608. ADD MAIN

609. MODIFY MAIN

610. UPDATE MAIN

611. MAINTAIN MAIN

612. MONITOR MAIN

613. INSPECT MAIN

614. TEST MAIN

615. CALIBRATE MAIN

616. VERIFY MAIN

617. CONFIRM MAIN

618. VALIDATE MAIN

619. APPROVE MAIN

620. SIGN OFF MAIN

621. COMPLETE MAIN

622. FINISH MAIN

623. END MAIN

624. STOP MAIN

625. PAUSE MAIN

626. RESUME MAIN

627. CONTINUE MAIN

628. RESTART MAIN

629. RERUN MAIN

630. REPEAT MAIN

631. RECYCLE MAIN

632. REUSE MAIN

633. REPAIR MAIN

634. REPLACE MAIN

635. ENLARGE MAIN

636. REDUCE MAIN

637. CHANGE MAIN

638. MOVE MAIN

639. DELETE MAIN

640. ADD MAIN

641. MODIFY MAIN

642. UPDATE MAIN

643. MAINTAIN MAIN

644. MONITOR MAIN

645. INSPECT MAIN

646. TEST MAIN

647. CALIBRATE MAIN

648. VERIFY MAIN

649. CONFIRM MAIN

650. VALIDATE MAIN

651. APPROVE MAIN

652. SIGN OFF MAIN

653. COMPLETE MAIN

654. FINISH MAIN

655. END MAIN

656. STOP MAIN

657. PAUSE MAIN

658. RESUME MAIN

659. CONTINUE MAIN

660. RESTART MAIN

661. RERUN MAIN

662. REPEAT MAIN

663. RECYCLE MAIN

664. REUSE MAIN

665. REPAIR MAIN

666. REPLACE MAIN

667. ENLARGE MAIN

668. REDUCE MAIN

669. CHANGE MAIN

670. MOVE MAIN

671. DELETE MAIN

672. ADD MAIN

673. MODIFY MAIN

674. UPDATE MAIN

675. MAINTAIN MAIN

676. MONITOR MAIN

677. INSPECT MAIN

678. TEST MAIN

679. CALIBRATE MAIN

680. VERIFY MAIN

681. CONFIRM MAIN

682. VALIDATE MAIN

683. APPROVE MAIN

684. SIGN OFF MAIN

685. COMPLETE MAIN

686. FINISH MAIN

687. END MAIN

688. STOP MAIN

689. PAUSE MAIN

690. RESUME MAIN

691. CONTINUE MAIN

692. RESTART MAIN

693. RERUN MAIN

694. REPEAT MAIN

695. RECYCLE MAIN

696. REUSE MAIN

697. REPAIR MAIN

698. REPLACE MAIN

699. ENLARGE MAIN

700. REDUCE MAIN

701. CHANGE MAIN

702. MOVE MAIN

703. DELETE MAIN

704. ADD MAIN

705. MODIFY MAIN

706. UPDATE MAIN

707. MAINTAIN MAIN

708. MONITOR MAIN

709. INSPECT MAIN

710. TEST MAIN

711. CALIBRATE MAIN

712. VERIFY MAIN

713. CONFIRM MAIN

714. VALIDATE MAIN

715. APPROVE MAIN

716. SIGN OFF MAIN

717. COMPLETE MAIN

718. FINISH MAIN

719. END MAIN

720. STOP MAIN

721. PAUSE MAIN

722. RESUME MAIN

723. CONTINUE MAIN

724. RESTART MAIN

725. RERUN MAIN

726. REPEAT MAIN

727. RECYCLE MAIN

728. REUSE MAIN

729. REPAIR MAIN

730. REPLACE MAIN

731. ENLARGE MAIN

732. REDUCE MAIN

733. CHANGE MAIN

734. MOVE MAIN

735. DELETE MAIN

736. ADD MAIN

737. MODIFY MAIN

738. UPDATE MAIN

739. MAINTAIN MAIN

740. MONITOR MAIN

741. INSPECT MAIN

742. TEST MAIN

743. CALIBRATE MAIN

744. VERIFY MAIN

745. CONFIRM MAIN

746. VALIDATE MAIN

747. APPROVE MAIN

748. SIGN OFF MAIN

749. COMPLETE MAIN

750. FINISH MAIN

751. END MAIN

752. STOP MAIN

753. PAUSE MAIN

754. RESUME MAIN

755. CONTINUE MAIN

756. RESTART MAIN

757. RERUN MAIN

758. REPEAT MAIN

759. RECYCLE MAIN

760. REUSE MAIN

761. REPAIR MAIN

762. REPLACE MAIN

763. ENLARGE MAIN

764. REDUCE MAIN

765. CHANGE MAIN

766. MOVE MAIN

767. DELETE MAIN

768. ADD MAIN

769. MODIFY MAIN

770. UPDATE MAIN

771. MAINTAIN MAIN

772. MONITOR MAIN

773. INSPECT MAIN

774. TEST MAIN

775. CALIBRATE MAIN

776. VERIFY MAIN

777. CONFIRM MAIN

778. VALIDATE MAIN

779. APPROVE MAIN

780. SIGN OFF MAIN

781. COMPLETE MAIN

782. FINISH MAIN

783. END MAIN

784. STOP MAIN

785. PAUSE MAIN

786. RESUME MAIN

787. CONTINUE MAIN

788. RESTART MAIN

789. RERUN MAIN

790. REPEAT MAIN

791. RECYCLE MAIN

792. REUSE MAIN

793. REPAIR MAIN

794. REPLACE MAIN

795. ENLARGE MAIN

796. REDUCE MAIN

797. CHANGE MAIN

798. MOVE MAIN

799. DELETE MAIN

800. ADD MAIN

801. MODIFY MAIN

802. UPDATE MAIN

803. MAINTAIN MAIN

804. MONITOR MAIN

805. INSPECT MAIN

806. TEST MAIN

807. CALIBRATE MAIN

808. VERIFY MAIN

809. CONFIRM MAIN

810. VALIDATE MAIN

811. APPROVE MAIN

812. SIGN OFF MAIN

813. COMPLETE MAIN

814. FINISH MAIN

815. END MAIN

816. STOP MAIN

817. PAUSE MAIN

818. RESUME MAIN

819. CONTINUE MAIN

820. RESTART MAIN

821. RERUN MAIN

822. REPEAT MAIN

823. RECYCLE MAIN

824. REUSE MAIN

825. REPAIR MAIN

826. REPLACE MAIN

827. ENLARGE MAIN

828. REDUCE MAIN

829. CHANGE MAIN

830. MOVE MAIN

831. DELETE MAIN

832. ADD MAIN

833. MODIFY MAIN

834. UPDATE MAIN

835. MAINTAIN MAIN

836. MONITOR MAIN

837. INSPECT MAIN

838. TEST MAIN

839. CALIBRATE MAIN

840. VERIFY MAIN

841. CONFIRM MAIN

842. VALIDATE MAIN

843. APPROVE MAIN

844. SIGN OFF MAIN

845. COMPLETE MAIN

846. FINISH MAIN

847. END MAIN

848. STOP MAIN

849. PAUSE MAIN

850. RESUME MAIN

851. CONTINUE MAIN

852. RESTART MAIN

853. RERUN MAIN

854. REPEAT MAIN

855. RECYCLE MAIN

856. REUSE MAIN

857. REPAIR MAIN

858. REPLACE MAIN

859. ENLARGE MAIN

860. REDUCE MAIN

861. CHANGE MAIN

862. MOVE MAIN

863. DELETE MAIN

864. ADD MAIN

865. MODIFY MAIN

866. UPDATE MAIN

867. MAINTAIN MAIN

868. MONITOR MAIN

869. INSPECT MAIN

870. TEST MAIN

871. CALIBRATE MAIN

872. VERIFY MAIN

873. CONFIRM MAIN

874. VALIDATE MAIN

875. APPROVE MAIN

876

Appendix 2: Update to Enrollment Forecast, December 2015

Prepared by: Jerome N. McKibben, Ph.D.

McKibben Demographic Research

Rock Hill, South Carolina

Hardy Elementary

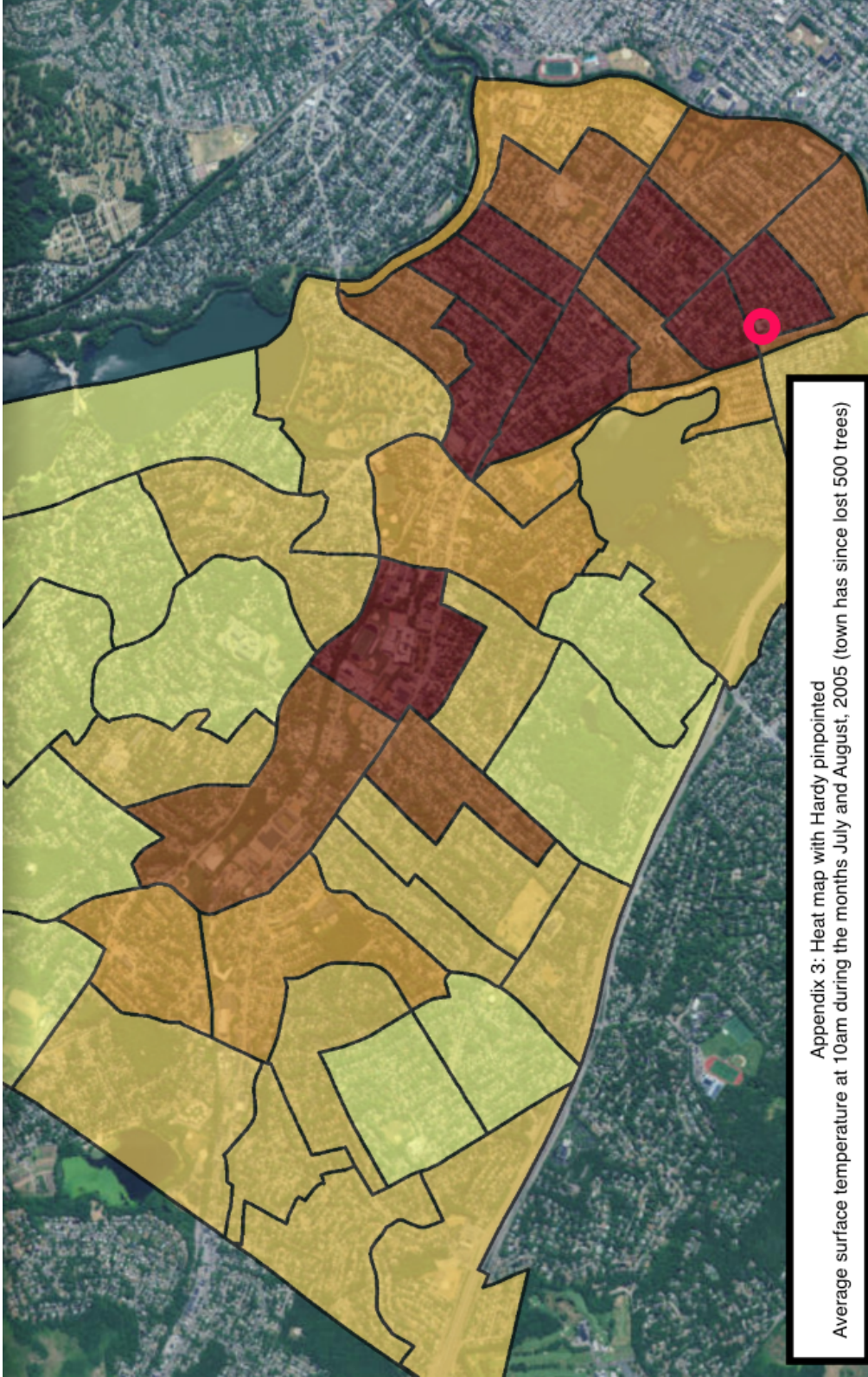
December 2015

	2010-11	2011-12	2012-13	2013-14	2014-15	2015-16	2016-17	2017-18	2018-19	2019-20	2020-21	2021-22	2022-23	2023-24	2024-25	2025-26
K	42	64	67	65	82	85	84	84	83	82	81	80	79	78	77	79
1	65	46	62	67	69	81	87	88	87	86	85	84	82	81	80	79
2	57	65	47	71	68	67	80	86	87	86	85	86	85	83	82	81
3	69	58	59	49	68	61	66	78	84	85	84	86	87	86	84	83
4	56	64	55	58	46	71	59	64	76	81	82	82	84	85	84	82
5	40	56	60	53	59	48	69	57	62	74	79	80	80	82	83	82
Total K-5	329	353	350	363	392	413	445	457	479	494	496	498	497	495	490	486
Total K-5	329	353	350	363	392	413	445	457	479	494	496	498	497	495	490	486
Change		24	-3	13	29	21	32	12	22	15	2	2	-1	-2	-5	-4
% Change		7.3%	-0.8%	3.7%	8.0%	5.4%	7.7%	2.7%	4.8%	3.1%	0.4%	0.4%	-0.2%	-0.4%	-1.0%	-0.8%

Arlington Public Schools: Total District Enrollment

December 2015

	2010-11	2011-12	2012-13	2013-14	2014-15	2015-16	2016-17	2017-18	2018-19	2019-20	2020-21	2021-22	2022-23	2023-24	2024-25	2025-26
PK	57	48	54	55	57	56	56	56	56	56	56	56	56	56	56	56
K	448	450	454	471	516	483	487	481	483	479	476	476	471	464	459	468
1	441	455	460	472	482	520	509	513	510	511	507	502	494	487	480	473
2	433	427	446	474	465	479	513	502	506	503	504	507	502	494	488	481
3	395	429	418	458	477	456	475	507	497	501	498	505	508	503	495	489
4	427	390	424	428	459	471	466	484	515	505	508	500	508	511	506	498
5	360	415	386	423	428	459	464	462	479	509	500	507	499	507	510	505
Total: PK-5	2561	2614	2642	2781	2884	2924	2970	3005	3046	3064	3049	3053	3038	3022	2994	2970
6	344	349	374	352	397	409	436	436	441	439	450	478	470	477	469	477
7	347	331	328	385	341	382	403	429	429	434	435	446	473	465	472	464
8	360	346	326	317	369	336	371	391	416	416	423	424	435	461	453	460
Total: 6-8	1051	1026	1028	1054	1107	1127	1210	1256	1286	1289	1308	1348	1378	1403	1394	1401
9	297	300	313	280	306	344	312	345	364	387	387	391	392	402	426	419
10	318	297	298	313	289	313	347	315	348	368	391	389	393	394	404	428
11	286	331	296	303	310	278	305	338	307	339	359	379	377	381	382	392
12	295	290	326	289	312	318	281	308	341	310	342	361	381	379	383	384
Total: 9-12	1196	1218	1233	1185	1217	1253	1245	1306	1360	1404	1479	1520	1543	1556	1595	1623
Total: PK-12	4808	4858	4903	5020	5208	5304	5425	5567	5692	5757	5836	5921	5959	5981	5983	5994
Total: PK-12	4808	4858	4903	5020	5208	5304	5425	5567	5692	5757	5836	5921	5959	5981	5983	5994
Change		50	45	117	188	96	121	142	125	65	79	85	38	22	2	11
%-Change		1.0%	0.9%	2.4%	3.7%	1.8%	2.3%	2.6%	2.2%	1.1%	1.4%	1.5%	0.6%	0.4%	0.0%	0.2%
Total: PK-5	2561	2614	2642	2781	2884	2924	2970	3005	3046	3064	3049	3053	3038	3022	2994	2970
Change		53	28	139	103	40	46	35	41	18	-15	4	-15	-16	-28	-24
%-Change		2.1%	1.1%	5.3%	3.7%	1.4%	1.6%	1.2%	1.4%	0.6%	-0.5%	0.1%	-0.5%	-0.5%	-0.9%	-0.8%
Total: 6-8	1051	1026	1028	1054	1107	1127	1210	1256	1286	1289	1308	1348	1378	1403	1394	1401
Change		-25	2	26	53	20	83	46	30	3	19	40	30	25	-9	7
%-Change		-2.4%	0.2%	2.5%	5.0%	1.8%	7.4%	3.8%	2.4%	0.2%	1.5%	3.1%	2.2%	1.8%	-0.6%	0.5%
Total: 9-12	1196	1218	1233	1185	1217	1253	1245	1306	1360	1404	1479	1520	1543	1556	1595	1623
Change		22	15	-48	32	36	-8	61	54	44	75	41	23	13	39	28
%-Change		1.8%	1.2%	-3.9%	2.7%	3.0%	-0.6%	4.9%	4.1%	3.2%	5.3%	2.8%	1.5%	0.8%	2.5%	1.8%



Appendix 3: Heat map with Hardy pinpointed
 Average surface temperature at 10am during the months July and August, 2005 (town has since lost 500 trees)

Legend

Land Surface Temp

Celsius



Map Author: Lauren Cabrera,
 Boston University



This petition has collected
201 signatures
using the online tools at iPetitions.com

Printed on 2017-11-16

The Hardy School's Outdoor Space Needs

About this petition

Dear Dr. Bodie and members of the School Committee:

During the past year, the Hardy School parent community has watched with great interest as the six-classroom addition process moves toward fall 2017 construction. We appreciate all the work that members of the School Department and other town leaders have done to ensure that Hardy receives this important addition. However, one issue that concerned us as we followed the planning was that the school's outdoor space did not appear to be receiving attention as a design and strategic priority—either during the construction or afterward. This issue is of paramount importance to our community, and it is directly connected to the enrollment challenges that necessitated the addition in the first place.

We have been pleased to note a recent uptick in administrative attention to the playground issues in Facilities Subcommittee meetings and through email communications. As the school year ends, we have come together to voice our support for a holistic, thoughtful approach to the future of our outdoor space—and to share our hopes for the eventual outcome of this important conversation.

Specifically:

- 1) During construction, when the small playground structure has been removed from the Chandler Street side of the school, we need a clear plan to enable all of our students to have the recess experience they need. We appreciate that this is currently under consideration and will be part of the design process.
- 2) We need short- and long-term solutions for the Lake Street side that will offer students a sustainable surface (like wood chips or other fiber material) and engaging materials (a small structure and loose-parts play equipment are options to be considered) to encourage the kind of collaborative, imaginative free play our children need at recess. We are pleased that the administration is looking into interim solutions for next year and has worked to have funds allocated to place a play structure on the Lake Street side during the summer of 2018.
- 3) Creative, forward-thinking ideas for the future of the Chandler Street play area should be considered as part of this construction project. With Hardy's enrollment growing so quickly, it is not appropriate to expect our students and teachers to wait until a multi-year, town-wide study is complete to make changes, which we understand is the current plan. We know that the playground space we have now is inadequate for this year's population of approximately 450 students. Projections indicate that Hardy will have about 40 additional students within three years. Simply replacing the already-crowded play structure that will be lost to construction with a new one on the Lake Street side will not sufficiently increase playground capacity, and it will do nothing to make the Chandler Street side a vibrant space with multiple play opportunities. Playground capacity and usability at Hardy have become an issue of parity.

With this in mind, we urge you to consider how the large blacktop area could be reconfigured to keep a basketball court and space for other games but also offer space for other types of play. With thoughtful planning, there is room for an additional play structure if some blacktop is removed. It is

logical to plan to do this while heavy equipment is already on site. Further, the partial fence that runs parallel to the main Chandler Street fence could be removed to increase usable space. We request that multiple options be explored to make the most of the space we have, both during and after construction. As a parent community, we view the upcoming expansion as the appropriate time—for financial and programmatic reasons—to make needed improvements to the function of the whole school, which includes classrooms, common space, and outdoor space.

As we work toward meeting our enrollment challenges, we see the current moment as a chance to look holistically at the way our outdoor space contributes to our children's social learning and overall educational experience. We applaud your call for creating a Hardy Building Committee, and we look forward to participating in the conversation on this issue in the weeks and months to come. This petition is meant to communicate our hopes for the decisions that may be made in the interim regarding Hardy School's outdoor space.

Sincerely,

The Hardy Parent Community

Signatures

1. Name: Kate Leary on 2017-06-18 17:17:42
Comments:

2. Name: Holly Rossi on 2017-06-18 17:41:36
Comments:

3. Name: Michele J Phelan on 2017-06-18 17:49:30
Comments:

4. Name: Andrew Malone on 2017-06-18 18:01:55
Comments:

5. Name: Rob Rossi on 2017-06-18 18:04:53
Comments:

6. Name: Josh Smift on 2017-06-18 18:30:38
Comments:

7. Name: Dina Berdieva on 2017-06-18 18:31:26
Comments:

8. Name: Anne Clarke-Lauer on 2017-06-18 18:56:35
Comments:

9. Name: Cédrine Bell on 2017-06-18 19:01:39
Comments:

10. Name: Carol Zimmer on 2017-06-18 19:21:42
Comments:

11. Name: Addie Dublin on 2017-06-18 19:36:43
Comments:

12. Name: Chrissa Banner on 2017-06-18 20:03:20
Comments:

13. Name: Daniel Jalkut on 2017-06-18 20:24:09
Comments:

14. Name: Jen Regrut on 2017-06-18 22:03:03

Comments:

15. Name: Brendan Sullivan on 2017-06-18 22:06:00
Comments:

16. Name: Sarah Smith on 2017-06-18 22:27:50
Comments:

17. Name: Parul Vakani on 2017-06-18 22:51:26
Comments:

18. Name: Doris Pfaffinger on 2017-06-18 23:18:56
Comments:

19. Name: Ginna Smith Reeder on 2017-06-18 23:38:15
Comments:

20. Name: Kaitlin Longmire on 2017-06-19 00:31:20
Comments:

21. Name: Lauren Killeen on 2017-06-19 00:49:29
Comments:

22. Name: Alex Bilsky on 2017-06-19 00:56:55
Comments:

23. Name: Samit Chhabra on 2017-06-19 01:12:22
Comments:

24. Name: Allan Reeder on 2017-06-19 01:28:23
Comments:

25. Name: William J Logan on 2017-06-19 02:25:56
Comments:

26. Name: Marc Ruben on 2017-06-19 02:51:38
Comments:

27. Name: Joanna Lydgate on 2017-06-19 02:52:05
Comments:

28. Name: Dima Berdiev on 2017-06-19 03:03:04

Comments: Playground just like other components of school facilities should be well-thought out. I agree that this seems to be an afterthought for the administration and needs to change. If we can't find the money to do our schools and education right, what are we good for?

29. Name: Alia Atlas on 2017-06-19 03:31:25
Comments:

30. Name: Ethan Zimmer on 2017-06-19 03:38:50
Comments:

31. Name: Yukari Hirano on 2017-06-19 03:50:14
Comments:

32. Name: Ann Chhabra on 2017-06-19 04:15:41
Comments:

33. Name: Sarah Endo on 2017-06-19 08:43:35
Comments:

34. Name: Terry Holt on 2017-06-19 10:12:11
Comments: I look forward to the discussion and exchange of ideas regarding Hardy's outdoor play spaces. Thank you!

35. Name: Allison Holt on 2017-06-19 11:00:44
Comments:

36. Name: Frederick Robie on 2017-06-19 11:24:54
Comments:

37. Name: Clarissa Rowe on 2017-06-19 12:40:23
Comments: I am signing as a neighbor and a landscape architect who commends the parents for thinking these issues through so carefully. Children's play is integral to their mental and physical growth.

38. Name: Meghan Gocke on 2017-06-19 13:10:25
Comments:

39. Name: Sarah Weintraub on 2017-06-19 13:20:03
Comments: Hardy playground outdoor space is an integral part of the school day, ensuring our children have space to expend energy and therefore concentrate better in class. Please consider prioritizing Hardy playground space.

40. Name: John Ellis on 2017-06-19 13:21:15
Comments: Would love for town to be buyers next time a property on chandler becomes available and convert it into a play space.
-
41. Name: Anil Shrestha on 2017-06-19 13:29:14
Comments:
-
42. Name: Beau Tremblay on 2017-06-19 13:30:50
Comments:
-
43. Name: Kezia Simister on 2017-06-19 13:37:09
Comments:
-
44. Name: Britt McNiff on 2017-06-19 13:38:40
Comments:
-
45. Name: Sara Vail on 2017-06-19 13:41:24
Comments:
-
46. Name: Heather Phelps on 2017-06-19 13:41:59
Comments: I am concerned about the kids not having a adequate playground. Kids need to have outside time to move and climb. My son especially needs this to help develop his gross motor skills
-
47. Name: Marnie Weinberg on 2017-06-19 13:42:17
Comments:
-
48. Name: Sean P McNiff on 2017-06-19 13:45:24
Comments:
-
49. Name: Courtney Rodland on 2017-06-19 13:46:05
Comments: Hardy 2nd and 4th grade parent.
-
50. Name: Patsy O'Brien on 2017-06-19 13:47:02
Comments:
-
51. Name: Niva Shrestha on 2017-06-19 13:48:34
Comments:
-
52. Name: Lori Kennedy on 2017-06-19 13:49:27
Comments: Please don't miss this opportunity to meet Hardy student needs while achieving synergies and cost efficiencies with the expansion project.
-

53. Name: Amy LeBow on 2017-06-19 13:54:44
Comments:
-
54. Name: Hadley Johnson on 2017-06-19 13:58:20
Comments: Kids need space to run and play during recess in order to follow rules inside and learn well enough to meet the grade level standards that keep Arlington's school ratings high.
-
55. Name: Beth Newhall on 2017-06-19 13:59:49
Comments:
-
56. Name: Bonnie walah on 2017-06-19 14:03:53
Comments:
-
57. Name: Manisha Sharma on 2017-06-19 14:05:54
Comments:
-
58. Name: Max Dublin on 2017-06-19 14:19:44
Comments:
-
59. Name: meran ellis on 2017-06-19 14:30:35
Comments:
-
60. Name: Joe Marshall on 2017-06-19 14:34:20
Comments:
-
61. Name: James Hopper on 2017-06-19 14:43:17
Comments:
-
62. Name: Moya Charig on 2017-06-19 14:56:25
Comments:
-
63. Name: Elizabeth Crowley on 2017-06-19 14:59:49
Comments:
-
64. Name: Maria Bargallo Perea on 2017-06-19 15:14:31
Comments:
-
65. Name: Eva on 2017-06-19 15:31:47
Comments: The blacktop is also used for soccer, kickball, football and other team games by the older kids. Please keep in mind that the older kids don't play on the structures as do the younger kids when considering reconfiguring the blacktop space.
-

66. Name: Katie Clinton on 2017-06-19 15:32:03
Comments:

67. Name: Amanda Keen on 2017-06-19 15:32:59
Comments:

68. Name: Pete Gast on 2017-06-19 15:44:51
Comments:

69. Name: Eileen Maher on 2017-06-19 15:44:55
Comments:

70. Name: Clay Hopper on 2017-06-19 15:47:52
Comments:

71. Name: Lani Savvidis on 2017-06-19 15:54:09
Comments:

72. Name: Christian Pfluegl on 2017-06-19 16:06:56
Comments:

73. Name: Ethan Gee on 2017-06-19 16:47:07
Comments:

74. Name: Roslyn Fitzgerald on 2017-06-19 16:55:49
Comments:

75. Name: Dean Regrut on 2017-06-19 16:56:39
Comments:

76. Name: Joshua Ayares on 2017-06-19 17:04:20
Comments:

77. Name: Chara Lee on 2017-06-19 17:17:11
Comments:

78. Name: Shibani Joshi on 2017-06-19 17:32:26
Comments:

79. Name: Sarah Boulet on 2017-06-19 17:32:41
Comments:

80. Name: David Saff on 2017-06-19 17:35:43
Comments:
-
81. Name: Kelly McDermott on 2017-06-19 17:39:34
Comments: Improve Hardy school playground and outdoor space!
-
82. Name: Enrica Dente on 2017-06-19 17:55:21
Comments: Space and time for free play at school (30 min in the morning, 1-2 hours in the afternoon) + space and time for the kids' daily nutrition needs (1 hour lunchtime) is what every child needs in order to learn well. I saw a HUGE difference in my first grader child's behavior in only three months of Italian public school. Not only he has learned to read to others and to write well in capital letters, lowercase printed letters and cursive (the detailed work can be seen in 9 large notebooks). He has also learned the multiplication tables very well, he has learned to analyse, summarize and solve story questions and maths problems. He has also learned to take care of his stuff (e.g. put all his pens and stationary stuff in the correct place and order, take home the correct books and notepads for his daily assignments). Last but not least, he has learned to work independently, without supervision, on his assignments.
-
83. Name: Rachel Krebs on 2017-06-19 18:12:46
Comments: Could the town consider permitting the surrounding streets for teacher parking from 7.30-9? Could we then make use of the parking lot surface as well?
-
84. Name: Lisa Cleary on 2017-06-19 18:15:55
Comments:
-
85. Name: Nancy Selander on 2017-06-19 18:39:01
Comments:
-
86. Name: Wyndham Ayares on 2017-06-19 19:01:45
Comments: All of our lives will be happier if the Hardy kids have more to do during recess. Thank you!
-
87. Name: Joseph Antony on 2017-06-19 19:09:36
Comments:
-
88. Name: Mary Elizabeth Iiggio on 2017-06-19 19:20:21
Comments: I strongly agree that Hardy school play space needs improvement and should be done as part of the scheduled construction being done to the school if not sooner
-
89. Name: Kym Goldsmith on 2017-06-19 19:24:12
Comments: It is absolutely essential that the kids still have ample space to play that is enjoyable, safe, and available daily. Please keep this a priority! Thank you.
-

90. Name: Karen Petho on 2017-06-19 19:31:59
Comments:
-
91. Name: Melissa McInerney on 2017-06-19 19:35:09
Comments:
-
92. Name: Brian Davies on 2017-06-19 19:43:33
Comments:
-
93. Name: Christina Roberts on 2017-06-19 19:50:25
Comments:
-
94. Name: Diana Jeffrey on 2017-06-19 20:02:05
Comments:
-
95. Name: Tim Cooper on 2017-06-19 20:26:43
Comments:
-
96. Name: Isabella Roversi on 2017-06-19 20:33:38
Comments:
-
97. Name: Stacie Smith on 2017-06-19 20:33:58
Comments:
-
98. Name: Monika Musial-Siwiek on 2017-06-19 20:56:33
Comments:
-
99. Name: Suzanne Shosmith on 2017-06-19 21:00:11
Comments:
-
100. Name: Jillean Price on 2017-06-19 21:13:53
Comments:
-
101. Name: Ellen Fitanides on 2017-06-19 22:59:33
Comments: As part of the plan, I would also like to express my concerns that the trees not be cut down to make play space available.
-
102. Name: marci shapiro ide on 2017-06-19 23:52:02
Comments:
-
103. Name: Pauline Gnamm on 2017-06-20 00:10:01
Comments:

-
104. Name: Jessica Eisnor on 2017-06-20 01:17:44
Comments:
-
105. Name: Sarah Graham on 2017-06-20 01:22:17
Comments:
-
106. Name: Aimee Miller on 2017-06-20 01:30:50
Comments:
-
107. Name: Mariana lobato benvenuti on 2017-06-20 01:32:39
Comments:
-
108. Name: Rebecca Saff on 2017-06-20 01:39:19
Comments: Hardy Elementary School is more constrained by space limitations than other schools so we have to be more creative and forward-thinking to help our kids have space to play and run. Adding classrooms without any consideration for the outdoor space kids need does not take good care of our kids.
-
109. Name: Cathy Suarez on 2017-06-20 01:43:45
Comments:
-
110. Name: Daniel Goldsmith on 2017-06-20 01:46:18
Comments:
-
111. Name: Joyce Longmire on 2017-06-20 01:50:57
Comments:
-
112. Name: Richard Longmire on 2017-06-20 01:54:35
Comments: Please work to create a safe enjoyable recreation area for all of the children at Hardy School.
-
113. Name: Olga Gusikhina on 2017-06-20 02:14:11
Comments:
-
114. Name: Jennifer Burke on 2017-06-20 02:42:33
Comments:
-
115. Name: Marcella Radano on 2017-06-20 03:00:12
Comments: Please support early and informed planning for Hardy outdoor/play spaces.
-
116. Name: Leah on 2017-06-20 03:02:44

Comments:

117. Name: Kristin Davies on 2017-06-20 03:33:31
Comments:

118. Name: Annmarie Stevenson on 2017-06-20 10:22:09
Comments:

119. Name: Sarah McCarthy on 2017-06-20 11:01:36
Comments:

120. Name: Jannine williams on 2017-06-20 11:13:00
Comments:

121. Name: Sonia Almeida on 2017-06-20 11:23:01
Comments:

122. Name: Michelle Marshall on 2017-06-20 11:28:06
Comments:

123. Name: Laura Swan on 2017-06-20 12:48:14
Comments:

124. Name: Debbie Jacob on 2017-06-20 12:54:51
Comments:

125. Name: Courtney Horwitz on 2017-06-20 13:17:18
Comments:

126. Name: Jessica Steytler on 2017-06-20 13:27:59
Comments:

127. Name: Francis O'Donovan on 2017-06-20 13:55:23
Comments:

128. Name: Jessica Xu on 2017-06-20 14:09:08
Comments:

129. Name: Erin Freeburger on 2017-06-20 15:18:14
Comments:

130. Name: Matt Clarke-Lauer on 2017-06-20 15:46:57

Comments:

131. Name: Daniel Weinstock on 2017-06-20 16:14:14
Comments:

132. Name: Ellen Pfeiffer on 2017-06-20 16:16:13
Comments: Mother of rising first grader and two other future students

133. Name: Ryan Cleary on 2017-06-20 16:59:56
Comments:

134. Name: Marga Varea on 2017-06-20 17:03:09
Comments:

135. Name: Christian Farrar on 2017-06-20 18:01:55
Comments:

136. Name: Heather carey on 2017-06-20 18:08:03
Comments: I have always been perplexed that Hardy, with the least amount of outdoor space, is being added onto versus redistricting to where we can accommodate students at Thompson or other schools. thanks for your work.

137. Name: Elizabeth Hopper on 2017-06-20 22:14:27
Comments:

138. Name: Larry Hardesty on 2017-06-20 22:20:09
Comments:

139. Name: Debbie Hunter on 2017-06-21 00:31:16
Comments:

140. Name: Susan Bailey on 2017-06-21 00:33:25
Comments:

141. Name: Lauren Hague on 2017-06-21 00:34:32
Comments:

142. Name: Linda carella on 2017-06-21 02:17:29
Comments:

143. Name: Dilip Krishnan on 2017-06-21 03:00:48
Comments: Dad of first grader who loves the Hardy playground on weekdays and

weekends.

144. Name: Christine on 2017-06-21 03:11:41
Comments:

145. Name: Paulomi Dave-Potter on 2017-06-21 03:51:35
Comments: Our kids deserve to have enough outdoor play space to manage the growing population in the Hardy district!

146. Name: Elissa Jacobs on 2017-06-21 14:16:16
Comments: Hardy School children need room to play

147. Name: Jennifer Worden on 2017-06-21 14:41:24
Comments:

148. Name: Katherine Vogele-Bongiovanni on 2017-06-21 14:52:18
Comments:

149. Name: Erik Price on 2017-06-21 14:54:17
Comments:

150. Name: Tracy Manty on 2017-06-21 14:58:16
Comments: With an incoming Kstudent, I have six years that concern me if recess is affected!

A plan needs to be in place right now as we are in the stage to enact change.

151. Name: Josh Weinberg on 2017-06-21 15:12:46
Comments:

152. Name: Martha Ingols on 2017-06-21 15:47:56
Comments:

153. Name: Anne Coleman on 2017-06-21 22:59:15
Comments:

154. Name: Carrie McKinnon on 2017-06-22 00:18:47
Comments:

155. Name: Michele Bosso on 2017-06-22 00:31:13
Comments:

156. Name: Rachel Applwbaum on 2017-06-22 01:41:40
Comments: Mother of a Hardy first grader

157. Name: Ryan Jacobs on 2017-06-22 01:52:29
Comments: We live on Chandler St. Our 4 year old daughter is enrolling in Hardy in a year and a half. My family whole-heartedly supports EVERY component of this petition, and we intend to be highly vocal about our support.

158. Name: Sylvia Elmer on 2017-06-22 09:43:29
Comments:

159. Name: Matthew Crawford on 2017-06-22 12:27:08
Comments: Ideally with some grass to play on...

160. Name: Theodore Trevens on 2017-06-22 13:00:19
Comments:

161. Name: Tanya Palmer on 2017-06-22 13:04:49
Comments:

162. Name: Melissa Simmons on 2017-06-22 13:05:41
Comments:

163. Name: Adam Burke on 2017-06-22 13:05:59
Comments:

164. Name: Chris Charig on 2017-06-22 13:09:22
Comments:

165. Name: Laura Fitch on 2017-06-22 13:14:45
Comments:

166. Name: dan rosenblatt on 2017-06-22 13:21:11
Comments:

167. Name: Lauren Kamerzel on 2017-06-22 13:21:31
Comments:

168. Name: Ellen Robie on 2017-06-22 13:24:02
Comments:

169. Name: Noemi Razso on 2017-06-22 13:37:50

Comments:

170. Name: JH on 2017-06-22 13:38:36
Comments:

171. Name: Birgit Swain on 2017-06-22 13:41:27
Comments: Please make space for kids to play.

172. Name: Jim Flanagan on 2017-06-22 13:42:55
Comments:

173. Name: Isabella Roversi-Legere on 2017-06-22 13:48:33
Comments: Kids need more green space to play on. Please make this a priority during the design process. Thank you!

174. Name: Matt Solomon on 2017-06-22 13:54:48
Comments:

175. Name: Kellyann Stewart on 2017-06-22 14:01:10
Comments: This is a must for our children!

176. Name: Christopher Legere on 2017-06-22 14:05:35
Comments:

177. Name: Ellen Kloss on 2017-06-22 14:20:24
Comments:

178. Name: Kelly Bennett on 2017-06-22 14:20:39
Comments:

179. Name: Antonia Kenney on 2017-06-22 14:25:11
Comments:

180. Name: John Savvidis on 2017-06-22 14:25:25
Comments:

181. Name: Paul Kowert on 2017-06-22 14:25:47
Comments:

182. Name: Max Cavallaro on 2017-06-22 14:40:50
Comments: Please let me know if you need volunteers

183. Name: Sukrit Joshi on 2017-06-22 15:04:44
Comments:
-
184. Name: Victoria arthur on 2017-06-22 15:16:14
Comments:
-
185. Name: Hetal Verma on 2017-06-22 15:28:14
Comments:
-
186. Name: Amy Primmer on 2017-06-22 15:43:13
Comments:
-
187. Name: Marie Noneza on 2017-06-22 15:44:09
Comments:
-
188. Name: Laura Saylor on 2017-06-22 15:48:05
Comments: Kindergarten's play experience this year should not be repeated. It was unacceptable how the PTO offered to buy sand tables and they were never provided. Our children literally drew in the dirt with sticks--having nothing to play with on the Lake St. side.
-
189. Name: Sowmya Vijayakumar on 2017-06-22 15:56:24
Comments:
-
190. Name: Olga on 2017-06-22 15:56:53
Comments:
-
191. Name: Sarah Evans on 2017-06-22 16:01:17
Comments: Increased playground density can increase children's sedentary time and decrease their physical activity levels during recess. Physical activity has been linked to better academic performance. Free time helps kids develop communication skills and strengthen self-control. They learn to cooperate, negotiate, share, solve problems and cope with stress. In the short and long terms, the Hardy kids will be well-served by adults ensuring proper playground areas for growing population.
-
192. Name: R wilhelm on 2017-06-22 16:19:32
Comments:
-
193. Name: Madeleine Delpha McClure on 2017-06-22 17:23:49
Comments:
-
194. Name: Aya Amo on 2017-06-22 17:46:05
Comments:

195. Name: Sergio Sotelo on 2017-06-22 17:46:08
Comments:

196. Name: Philip Saylor on 2017-06-22 18:30:13
Comments:

197. Name: Danielle Sullivan on 2017-06-22 18:42:46
Comments:

198. Name: Darla Hart on 2017-06-22 19:16:17
Comments:

199. Name: Christian Peters on 2017-06-22 20:56:53
Comments:

200. Name: Cheryl Fudge on 2017-06-22 23:14:07
Comments:

201. Name: Eric Jacobson on 2017-06-22 23:25:23
Comments: Keep the full basketball court. Demolish the rest of the ugly blacktop and give the kids some grass to play on. The space looks like a school in the middle of New York city.

HARDY ELEMENTARY SCHOOL

Visual Overview of Campus

Submitted by the Executive Board of the Hardy PTO



Chandler Street Playground



Lake Street Area



2015-16 SCHOOL YEAR

The **last year** all classes used Chandler St. playground **without safety concerns** from teachers and administrators. Playground is at capacity.

GRADE	SECTIONS
-------	----------

K	4
1	4
2	3
3	3
4	3
5	2

Hardy Enrollment

Spring 2016 413

Fall 2016

Spring 2017

Fall 2017

Spring 2018

Fall 2018

Spring 2019

Fall 2019

Spring 2020



2016-17 SCHOOL YEAR

GRADE	SECTIONS
-------	----------

K	4
1	4
2	4
3	3
4	3
5	3

- Teachers deem it unsafe to have 4 large K classes on Chandler St. playground.
- Lake St. area used for half of K classes, until weather makes conditions untenable.
- By late fall, K classes split outdoor recess, reducing outdoor recess time to 15 minutes.

Hardy Enrollment

Spring 2016	413
Fall 2016	
Spring 2017	447 (+8%)
Fall 2017	
Spring 2018	
Fall 2018	
Spring 2019	
Fall 2019	



GRADE

SECTIONS

K	4
1	4
2	4
3	4
4	3
5	3

FALL 2017 (TODAY)

- Chandler St. playground and Lake St. area both in use.
- Temporary fence and wood chips installed on Lake St. Temporary equipment from school dept. has not yet arrived. PTO has provided sand tables and basketball hoops.
- Playground injuries expose safety issues due to deteriorating condition of Chandler St. play equipment. Repairs are made.

Hardy Enrollment

Spring 2016	413
Fall 2016	447
Spring 2017	
Fall 2017	457 (+2%)
Spring 2018	
Fall 2018	
Spring 2019	
Fall 2019	
Spring 2020	



SPRING 2018

- Additional playground space will be lost due to construction for addition (based on architect presentation, up to 50% of the space may be off limits).
- Lake St. area will need to be used more consistently by many grade levels, with temporary equipment.



GRADE	SECTIONS
-------	----------

K	4
1	4
2	4
3	4
4	4
5	3

Hardy Enrollment

Spring 2016 413

Fall 2016

447

Spring 2017

Fall 2017

457

Spring 2018

(+2%)

Fall 2018

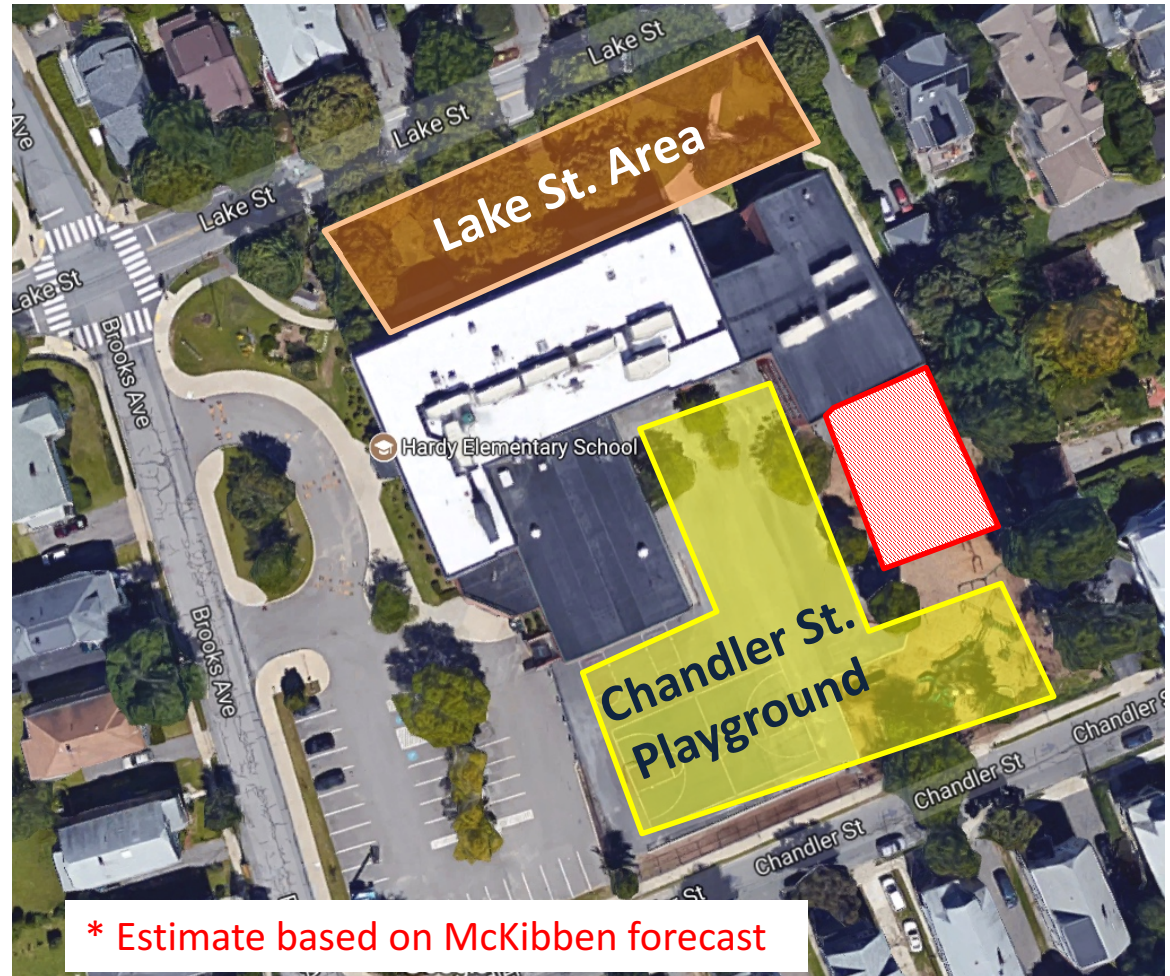
Spring 2019

Fall 2019

Spring 2020

FALL 2018

- Ongoing construction will continue to limit space on Chandler St. playground.
- Lake St. area will need to be used consistently. Permanent playground may be installed (using \$120K from Capital Budget) but timeline is not yet clear.



* Estimate based on McKibben forecast

GRADE	SECTIONS
-------	----------

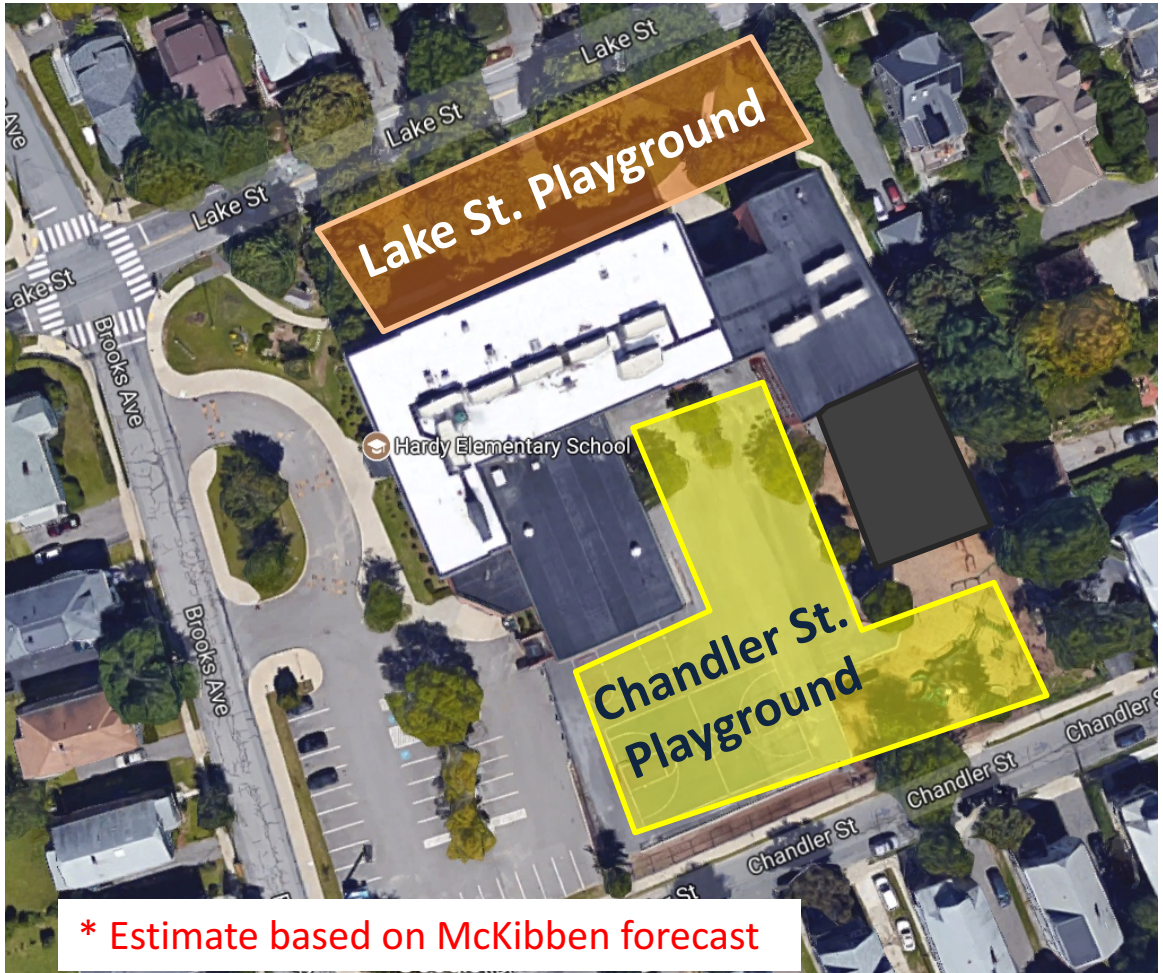
K	4
1	4
2	4
3	4
4	4
5	4

Hardy Enrollment

Spring 2016	413
Fall 2016	447
Spring 2017	457
Fall 2017	457
Spring 2018	457
Fall 2018	472*
Spring 2019	(+3%)
Fall 2019	
Spring 2020	

SPRING 2019

- Addition completed; Chandler Street playground will be permanently reduced in size.
- School enrollment will have **increased by at least 60 students and 5 classes since 2016** (when pre-construction playground was at capacity)



* Estimate based on McKibben forecast

GRADE	SECTIONS
K	4
1	4
2	4
3	4
4	4
5	4

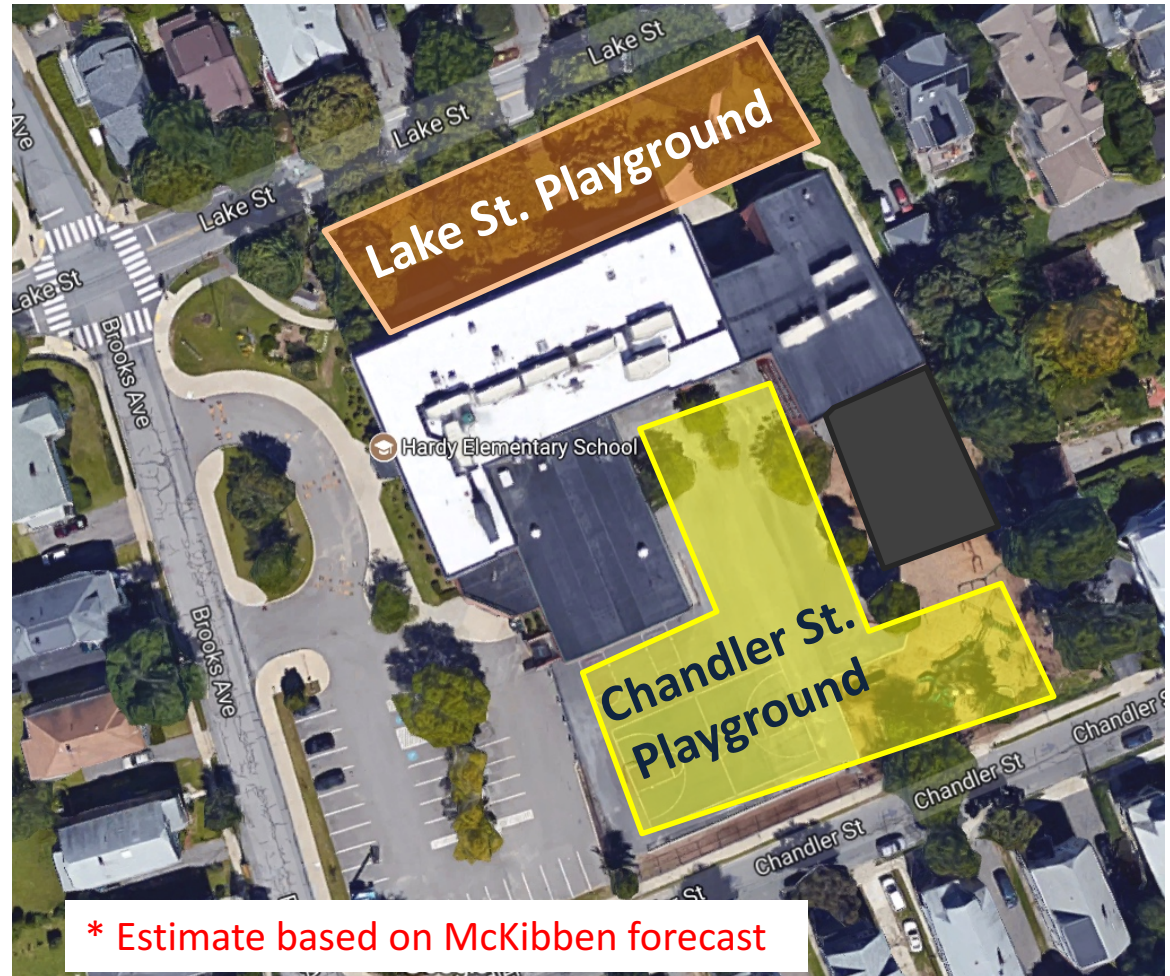
Hardy Enrollment

Spring 2016	413
Fall 2016	447
Spring 2017	457
Fall 2017	457
Spring 2018	457
Fall 2018	472*
Spring 2019	472* (+3%)
Fall 2019	
Spring 2020	

2019-20 SCHOOL YEAR

- Hardy's population will have grown 18% since 2016.

This is the time to overhaul the Chandler St playground, too!



* Estimate based on McKibben forecast

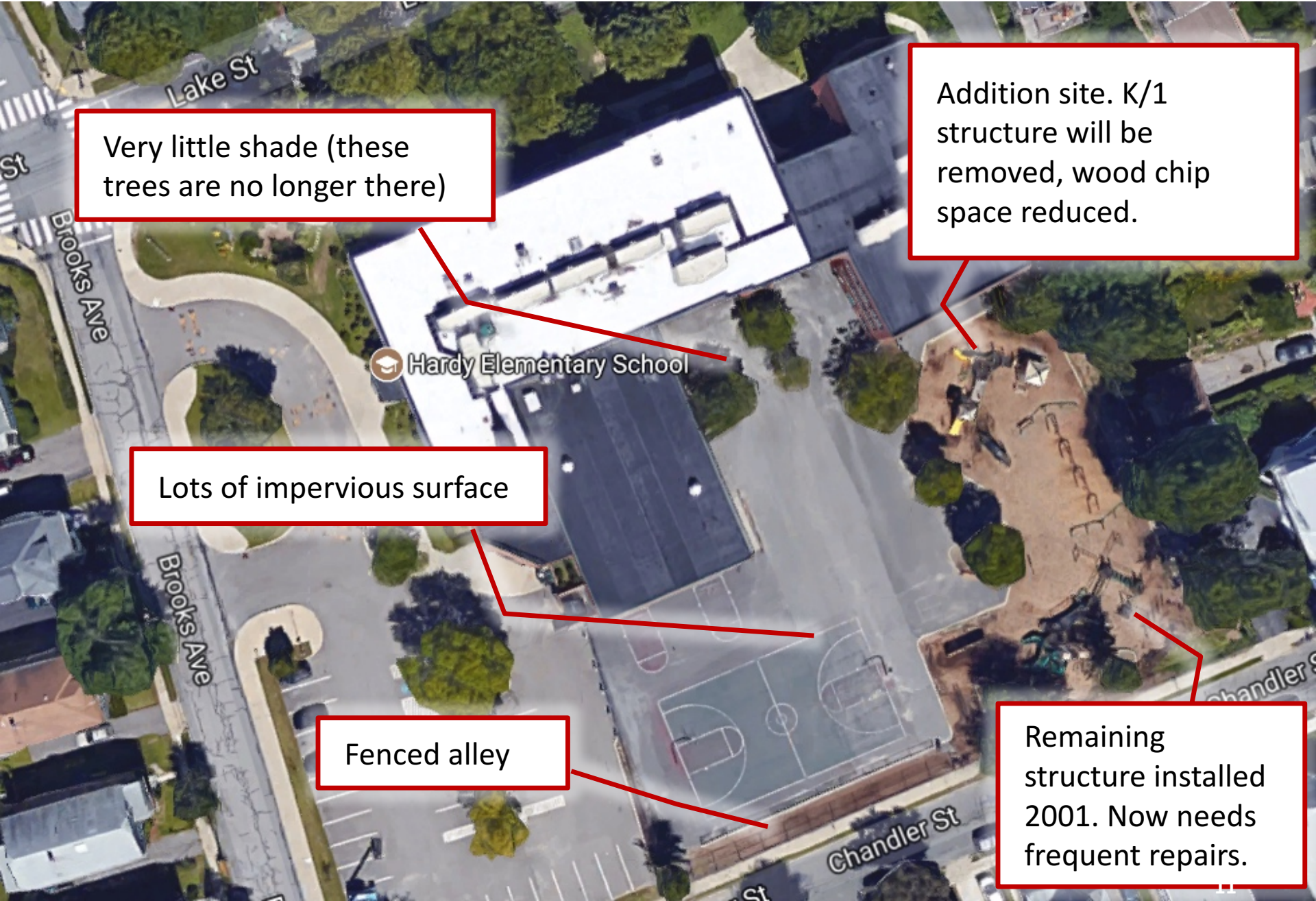
GRADE	SECTIONS
-------	----------

K	4
1	4
2	4
3	4
4	4
5	4

Hardy Enrollment

Spring 2016	413
Fall 2016	447
Spring 2017	457
Fall 2017	472*
Spring 2018	
Fall 2018	
Spring 2019	
Fall 2019	489*
(+4%, total of 18% increase since 2016)	
Spring 2020	

WHY REDESIGN THE CHANDLER ST. PLAYGROUND?



Very little shade (these trees are no longer there)

Addition site. K/1 structure will be removed, wood chip space reduced.

Lots of impervious surface

Fenced alley

Remaining structure installed 2001. Now needs frequent repairs.

Majority of playground composed of blacktop basketball court and two half courts



Fenced alley filled with wood chips serves no purpose



Blacktop courtyard



Before addition



OCT 2017

After: approximate scale of building volume added



Thank You

Thank you for your attention to this presentation and your service in town government. We hope you will consider funding this study application to help make the Hardy project a holistic expansion with adequate outdoor play opportunities.

-The Hardy PTO Executive Board

Terry Holt, President

Kate Leary, VP of Fundraising

Patsy O'Brien, VP of Fundraising

Roslyn Fitzgerald, Secretary

Please contact Kate with any questions.

kleary@gmail.com

(781) 266-6497



New addition to the existing Hardy Elementary School building

Arlington, MA – Finegold Alexander Architects and the town of Arlington announce the design of a new addition to the existing Hardy Elementary School building, the next in a series of school building projects for the town. The project team, including Jones Lang LaSalle as the owner’s project manager, have been working closely with the superintendent, Kathleen Bodie, and principal, Kristin DeFrancisco, to develop the design to suit the needs of the growing student population.

The addition is a three-story structure with two classrooms at each level and will be fully integrated with the exiting building. The exterior envelope will have a brick façade and will feature large projected window with interior seat nooks in each classroom. Each classroom will have a teaching wall with projectors and whiteboards as well as storage cubbies for students. The adjacent playground equipment will be reconfigured to allow for the new addition and landscape improvements to the site will be made.

The project is currently in design and will start construction in March 2018. Safety is of paramount importance, and the design incorporates elements to ensure the building and site are well controlled throughout the project. A separate playground project along Lake Street will take place in parallel to the building project.

-more-

In the past 10 to 15 years, the Town of Arlington has seen significant population growth with numerous projects underway including the renovation of the Gibbs Building into a new Middle School, expansion of new Thompson School, and the highly anticipated high school project due to begin later in the Fall.

“Our goal in developing the expansion concept was to create a compatible addition to complement the existing building fabric and one that would be on par with projects being completed at peer schools in town,” said Regan Shields Ives, Principal, Finegold Alexander.

Share this:



Tags: [EDU](#), [p1217](#)

Category: [All](#), [Education](#)

Subscribe

If you enjoyed this article, subscribe to receive more just like it.



« [Nauset Completes Hancock Estates](#)
[Erland Receives AGC MA Build New England Award](#) »

Follow High-Profile Monthly:

November 2017



BLOCK PLAN NO. 5

SCALE - 1" = 40'

SCALE 0 40 80 160 FEET

EXTERIOR INFORMATION

Type: 50 - Govt. Bldg.	Rating:
Sly Ht:	Rating:
(Liv) Units: 1	Rating:
Foundation:	Rating:
Frame:	Rating:
Prime Wall: 7 - Brick	Rating:
Sec Wall:	Rating:
Roof Struct:	Rating: Average
Roof Cover: 4 - Tar & Gravel	Rating:
Color:	Rating:
View / Desir:	Rating:

GENERAL INFORMATION

Grade: A - Very Good
Year Blt: 1925
Eff Yr Blt:
Alt %:
Jurisdct:
Const Mod:
Lump Sum Adj:

INTERIOR INFORMATION

Avg Ht/Fl: 10	%
Prim Int Wall: 6 - Average	%
Sec Int Wall:	%
Partition: 1 - Typical	%
Prim Floors:	%
Sec Floors:	%
Bsmnt Flr:	%
Bsmnt Gar:	%
Electric: 3 - Typical	%
Insulation: 2 - Typical	%
Int vs Ext:	%
Heat Fuel:	%
Heat Type: 5 - Steam	%
# Heat Sys:	%
% Heated:	%
Solar HW: NO	%
Central Vac: NO	%
% Com Wall:	%
% Sprinkled: 0	%

BATH FEATURES

Full Bath:	Rating:
A Bath:	Rating:
3/4 Bath:	Rating:
A 3QBth:	Rating:
1/2 Bath:	Rating:
A HBth:	Rating:
Other Fix:	Rating:

OTHER FEATURES

Kits: 1	Rating: Average
A Kits:	Rating:
Fpl:	Rating:
WSFlue:	Rating:

CONDO INFORMATION

Location:
Total Units:
Floor:
% Own:
Name:

DEPRECIATION

Phys Cond: AG - Avg-Good	31.1%
Functional:	%
Economic:	%
Special:	%
Override:	%
Total:	31.5%

CALC SUMMARY

Basic \$ / SQ: 74.00
Size Adj: 0.81817490
Const Adj: 0.99791998
Adj \$ / SQ: 60.419
Other Features: 5000
Grade Factor: 1.77
Neighborhood Int: 1.00000000
LUC Factor: 1.00
Adj Total: 5892886
Depreciation: 1856259
Depreciated Total: 4036627

COMMENTS

1925.
RESIDENTIAL GRID
1st Res Grid Desc: Line 1 # Units
Level FY LR DR D K FR RR BR FB HB L O
Other
Upper
Lvl 2
Lvl 1
Lower
Totals RMs: 0 BRs: 0 Baths: HB

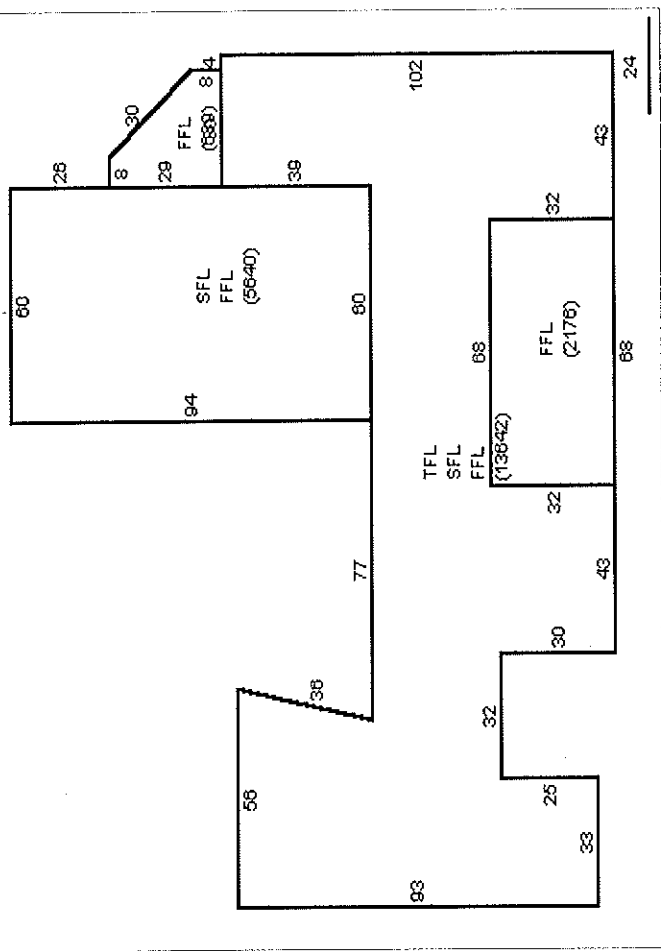
REMODELING

Exterior:	No Unit	RMS	BRS	FL
Interior:				
Additions: 1998				
Kitchen:				
Baths:				
Plumbing:				
Electric:				
Heating:				
General:				
Totals	0			

RES BREAKDOWN

FFL	1,335,079
SFL	1,164,999
TFL	824,236

SKETCH



SUB AREA

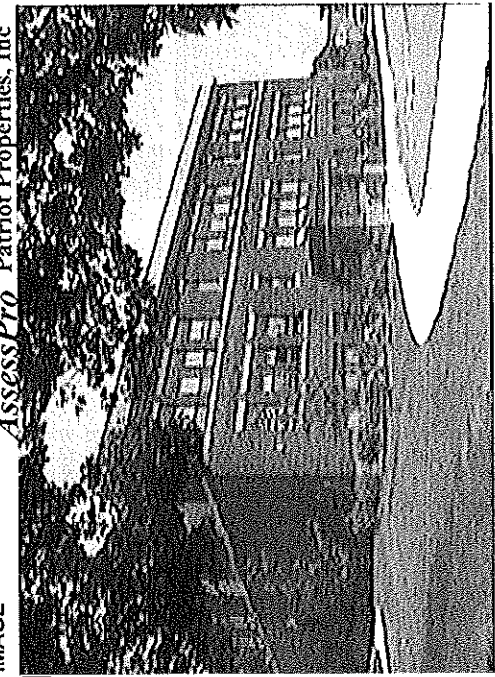
Code	Description	Area - SQ	Rate - AV	Undepr. Value	Sub %	Descrp	%	Qu	Ten
FFL	First Floor	22,087	60.420	1,335,079					
SFL	Second Floor	19,282	60.420	1,164,999					
TFL	Third Floor	13,642	60.420	824,236					

SUB AREA DETAIL

Code	Description	Area - SQ	Rate - AV	Undepr. Value	Sub %	Descrp	%	Qu	Ten
FFL	First Floor	22,087	60.420	1,335,079					
SFL	Second Floor	19,282	60.420	1,164,999					
TFL	Third Floor	13,642	60.420	824,236					

Net Sketched Area: 55,021	Total: 3,324,314
Size Adj: 55021	Gross Area: 55021
	FinArea: 55021

IMAGE



Assess Pro Patriot Properties, Inc

SPEC FEATURES/YARD ITEMS

Code	Description	A	Y/S	Qty	Size/Dim	Qual	Con	Year	Unit Price	D/S	Dep	LUC	Fact	NB Fa	Appr Value	Jurisdiction	Jurisdiction	Value	

PARCEL ID 005.0-0002-0001.0

JCoor JFact

Jurisdiction

Appr Value

Fact NB Fa

LUC

D/S

Dep

Unit Price

Year

Qual

Con

Year

Unit Price

D/S

Dep

LUC

Fact

NB Fa

Appr Value

Jurisdiction

Jurisdiction

Value

More: N

Total Yard Items:

Total Special Features:

Total:

Appendix 8: Letters of Support

- Hardy PTO Executive Board
- Town of Arlington School Committee
- Jennifer Susse
- Joseph Curro, Jr.
- Hardy School Council



November 28, 2017

Dear Community Preservation Committee:

We are pleased to have the opportunity to voice our wholehearted support for the School Department's CPA application. The population of the Hardy School has grown nearly 30% in the past five years, and we expect that number to rise to 35% by the 2018-19 school year, when the much-needed six-classroom addition is complete. We can't expand Hardy's small parcel of land, so we must make sure all the land we have is used thoughtfully. Developing the area that runs along Lake Street is a good start, but it does not address all of Hardy's outdoor space needs. Our limited space will soon need to serve a population of about 500 students. We have submitted a presentation, included in this application as appendix 5, that conveys the problem visually.

A landscape architect can analyze the space we have and make recommendations. Good design will be a worthwhile investment in the future of the Hardy School. Adequate outdoor space is an essential part of a functional school.

We understand enrollment growth has placed enormous pressure on town budgets and taxpayers. We plan to make raising money for equipment for the Chandler St. playground the focus of our silent auction this year, and we will consider other options, too. We know the funds we raise will be a relatively small percentage of the total budget for the eventual build, but we want to contribute. Realizing the full potential of Hardy's outdoor space will help our own children, but it's also important to us to help build a resource that will serve our community for years to come. It's important to begin with a thoughtful study, and we thank you for your consideration of this application.

Sincerely,

The Hardy PTO Executive Board

Terry Holt, President
Patsy O'Brien, VP of Fundraising
Kate Leary, VP of Fundraising
Roslyn Fitzgerald, Secretary

November 15, 2017

Dear Community Preservation Committee:

The Arlington School Committee is pleased to support the Arlington Public School's grant application to the Community Preservation Committee (CPA) for a study of the Chandler Street Playground at Hardy. The current plan to build a six-classroom addition at Hardy reduces the existing play-space area, and, importantly, reduces the non-blacktop surface area. We are confident that a comprehensive study of the Chandler Street Playground will produce a plan that better utilizes that space and works for all students.

Sincerely,

Jeff Thielman, Chair
Arlington School Committee

Jennifer Susse, Arlington School Committee

45 Teel Street, Arlington, MA 02474 • (781) 643-2564 • jsusse@arlington.k12.ma.us

November 15, 2017

Dear Community Preservation Committee:

I write in enthusiastic support of the Arlington Public School's grant application to the Community Preservation Committee (CPA) requesting \$50,000 for a site analysis and feasibility study of Hardy Elementary School's outdoor space. The study, to be conducted by a landscape architecture firm, would focus on the main playground, which is bounded by Chandler and Herbert Streets.

As chair of the Arlington School Committee's Facilities subcommittee I have had several opportunities to meet with Hardy parents over the last several months to hear their concerns about the current outdoor play space at Hardy. I have also had the opportunity to meet with, or talk by phone with, the current Hardy principal, Kristin DeFrancisco, Superintendent Dr. Kathleen Bodie, as well as several town officials and engaged community members. Furthermore, as a once Hardy parent I am personally familiar with the deficits of the current Hardy play space.

The existing Chandler Street playground was designed and installed as part of the 2001 renovation of the school. At the time that the equipment was chosen and the land use was determined, there were 270 students enrolled at Hardy. This year there are 457 students (a 69% increase). Furthermore, APS is projecting additional enrollment increases over the next several years at Hardy, necessitating a planned six-classroom addition that will further reduce the non-blacktop play-space area.

Hardy is the only elementary school in Arlington that is not adjacent to a park. Furthermore, the current playground is mostly blacktop, and while this space is frequently in use, it is not used equally by all students. I remember my daughter petitioning the Principal when she was in fifth grade to set aside one day a week for non-sporty girls to use the blacktop space. The petition was only partially successful.

The current plan to build a six-classroom addition at Hardy reduces the existing play-space area, but more significantly it reduces the non-blacktop surface area. While it would be difficult to make the playground larger, I am confident that a comprehensive study of the Chandler Street Playground will produce a plan that better utilizes the existing space and, importantly, better works for all of Hardy's students.

Sincerely,

Jennifer Susse, Chair of Facilities Subcommittee
Arlington School Committee

21 Millett Street
Arlington, MA 02474-2113
November 30, 2017

Eric Helmuth, Chair
Community Preservation Committee
Town of Arlington
730 Massachusetts Avenue
Arlington, MA 02476

Dear Chairman Helmuth,

As the Community Preservation Committee takes up its consideration of applications for CPA funding and develops recommendations to the 2018 Annual Town Meeting, I would like to commend to you and the committee two projects: one in the historical preservation category and one in the outdoor recreation category.

The Arlington Historical Society has applied for funding to help them to complete vital restoration work and to make safety improvements to the Jason Russell House. This funding will leverage previous CPA funding, as well as State funds and private donations, to ensure that this most valued of Arlington's historical assets endures into the future. The Jason Russell House has played an important role in educating our students and has been at the center of our tourism promotion efforts. As a member of the Board of Selectmen, I was privileged to hear a presentation by Society representatives of work performed to date on the structure, and I look forward to the full realization of this project with CPA support.

The School Department has applied for CPA funds to assist in its planning of outdoor spaces at the Hardy School. This work is necessitated by the exploding enrollment at the school. As a member of the School Enrollment Task Force, I was party to the decision to recommend the construction of an addition to the Hardy School to accommodate projected large increases in the number of students there. While our discussions centered on the provision of adequate classroom space and some of the common area needs of the building itself, it is essential that attention be paid to outdoor play areas, too. This need is exacerbated by the fact that a planned building addition will encroach on existing play space. CPA support for this project will benefit not only the school, but also the surrounding community. As a rare example of a school building which does not abut Park and Recreation property, I see this expenditure of funds as highly appropriate.

Thank you very much for the work that you and your colleagues do to make the Community Preservation Act such a success in Arlington. As the former co-chair of the ballot initiative that led to its adoption, I can say with great confidence that you have exceeded the expectations for this program, and I wish you all the best for future successes.

Respectfully,

A handwritten signature in black ink, reading "Joseph A. Curro, Jr." in a cursive style. The signature is fluid and connected, with a prominent initial "J" and a distinct "A" and "C".

JOSEPH A. CURRO, JR.