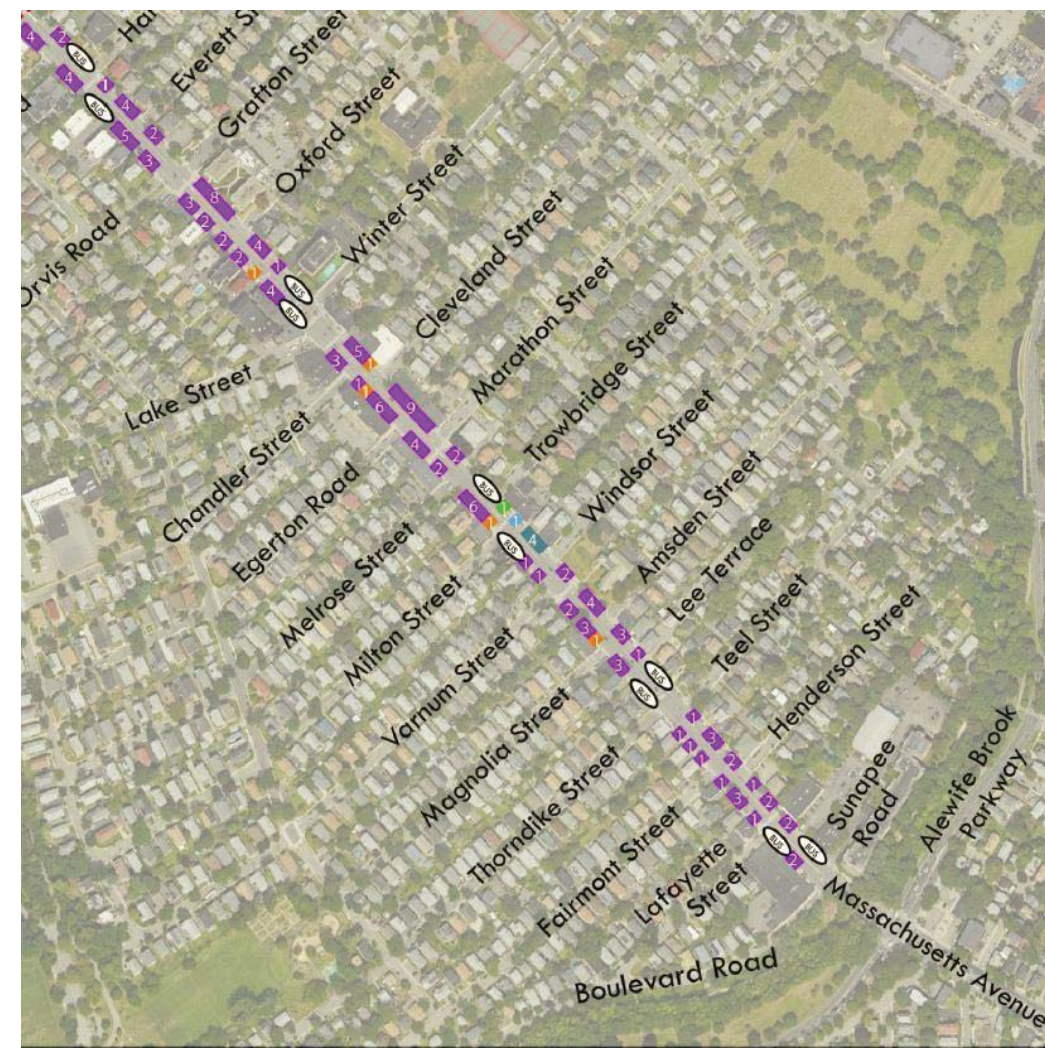


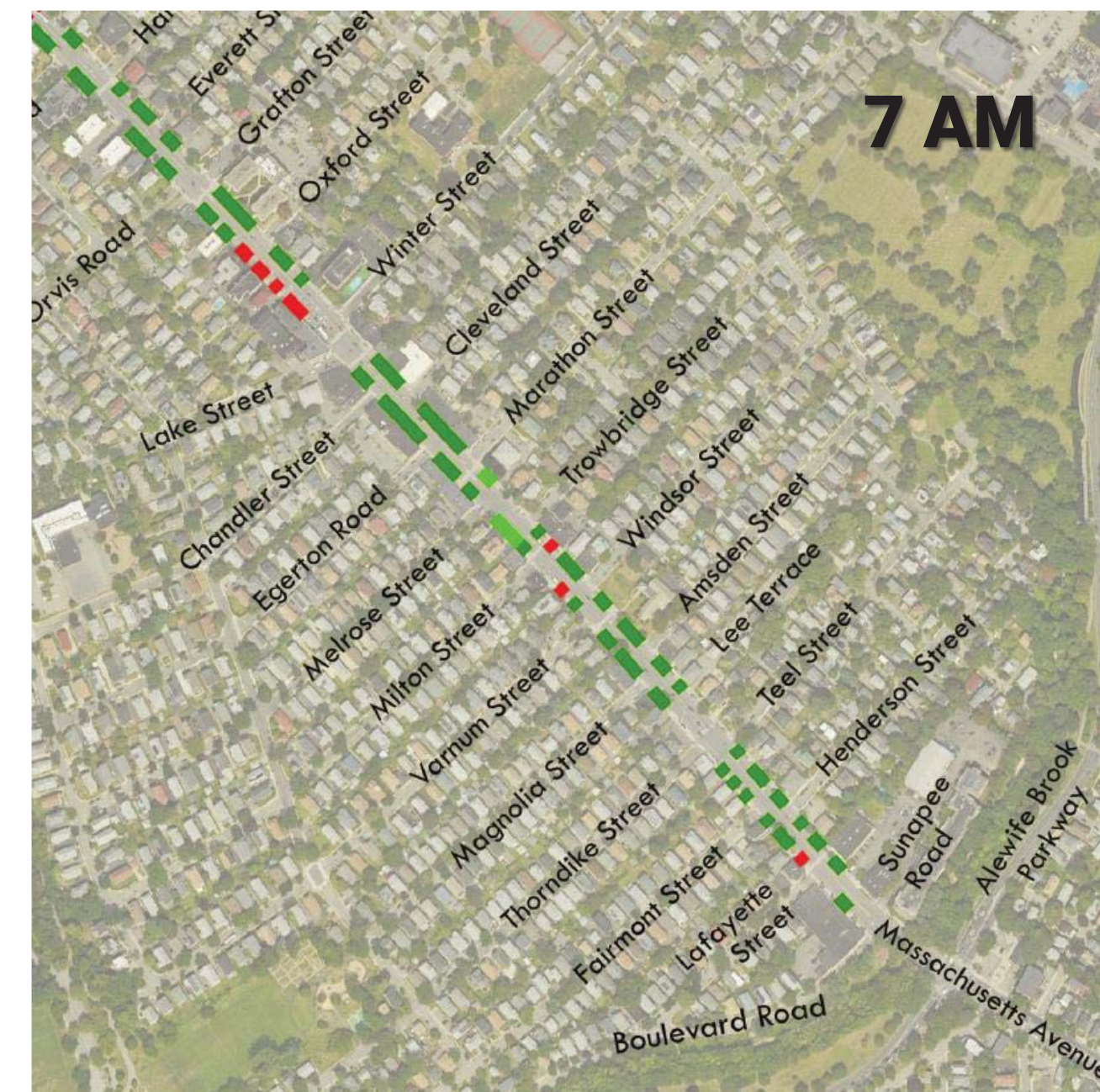
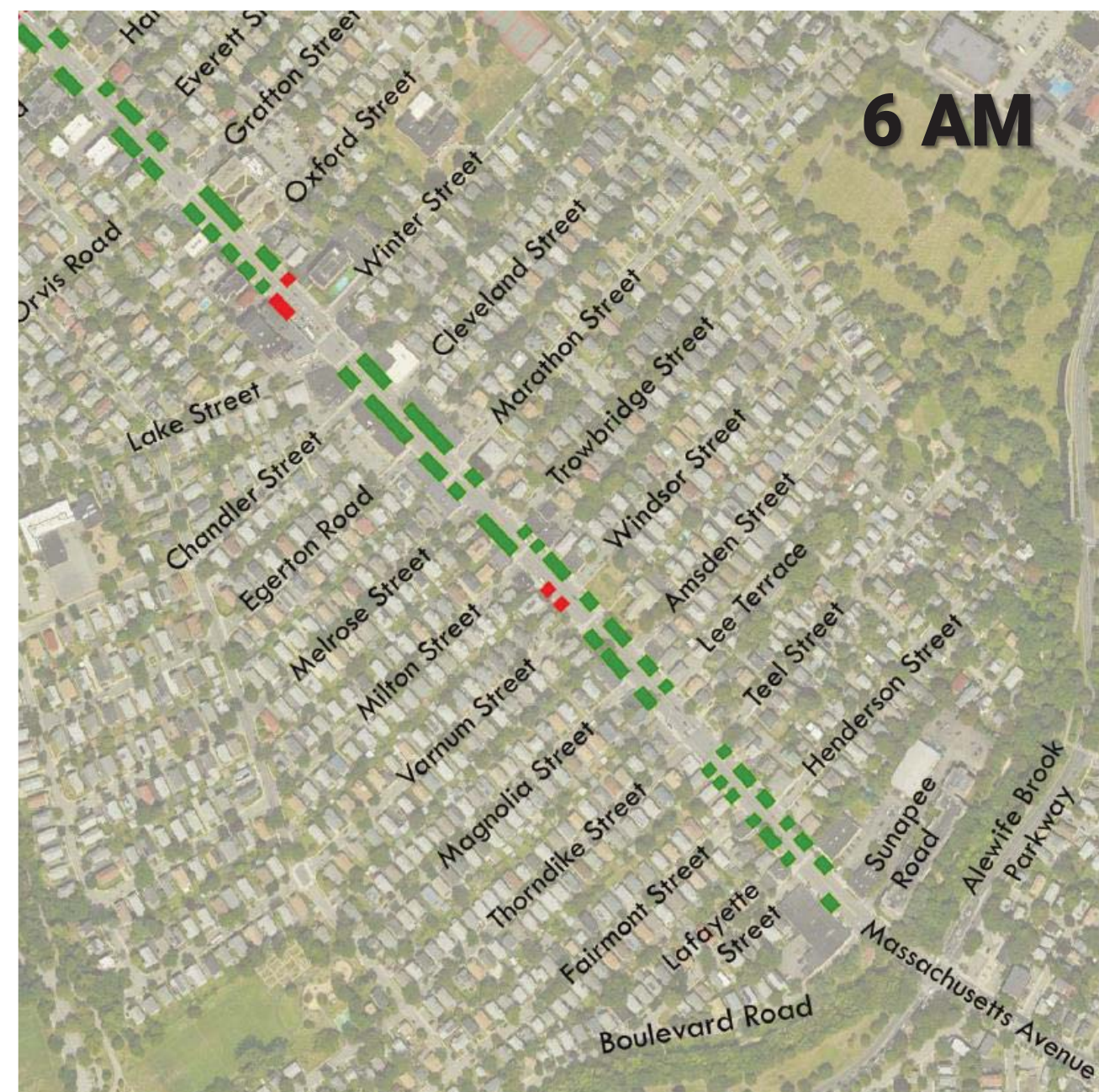
Parking Utilization

Parking Regulations



- On-Street Regulation**
- 4 Hour (39)
 - 2 Hour (191)
 - 30 Minute (4)
 - 15 Minute (1)
 - Handicap (9)
 - Taxi (3)
 - Unsigned (1)
 - Bus Stop

	Capacity [# parking spaces]	Utilization [# spaces used]			
		6 AM	7 AM	8 AM	9 AM
<i>Inbound</i>	75	10	14	21	42
<i>Outbound</i>	66	2	3	16	35
Total	141	12	17	37	77



- Parking Utilization**
- 100% +
 - 85% - 99%
 - 65% - 84%
 - 40% - 64%
 - 0-39%

Source: Metropolitan Area Planning Council