

# Lussiano / North Union Playground

Community Meeting #3  
January 23, 2020



# Agenda

- Existing Conditions
- Community Participation
- Previous Alternatives
- Schematic Design
- Play Equipment Concepts





# Site

Everett Street

Thompson  
Elementary School

North Union  
Spray Park  
Spray Pool

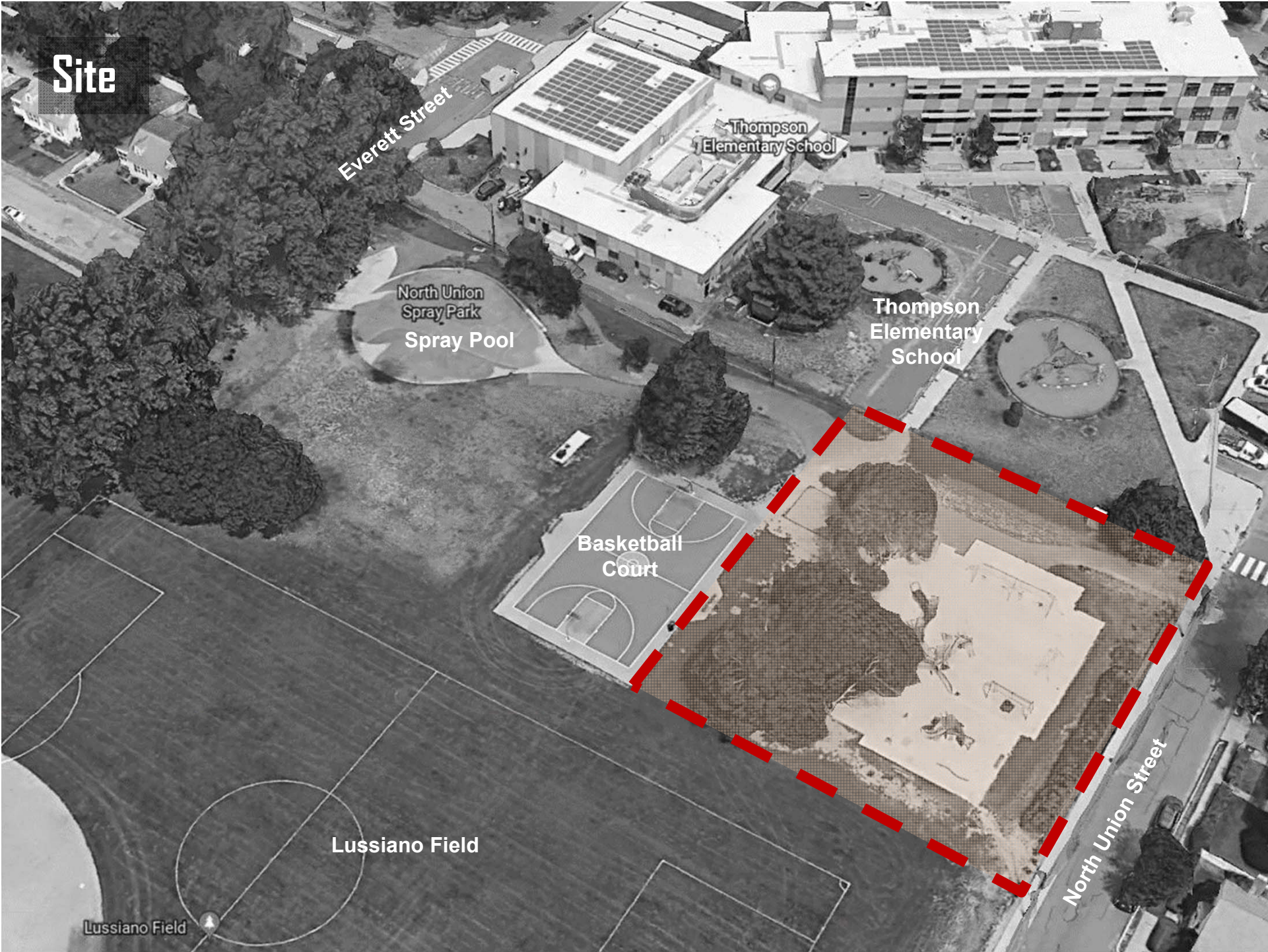
Thompson  
Elementary  
School

Basketball  
Court

Lussiano Field

Lussiano Field

North Union Street





# Existing Conditions



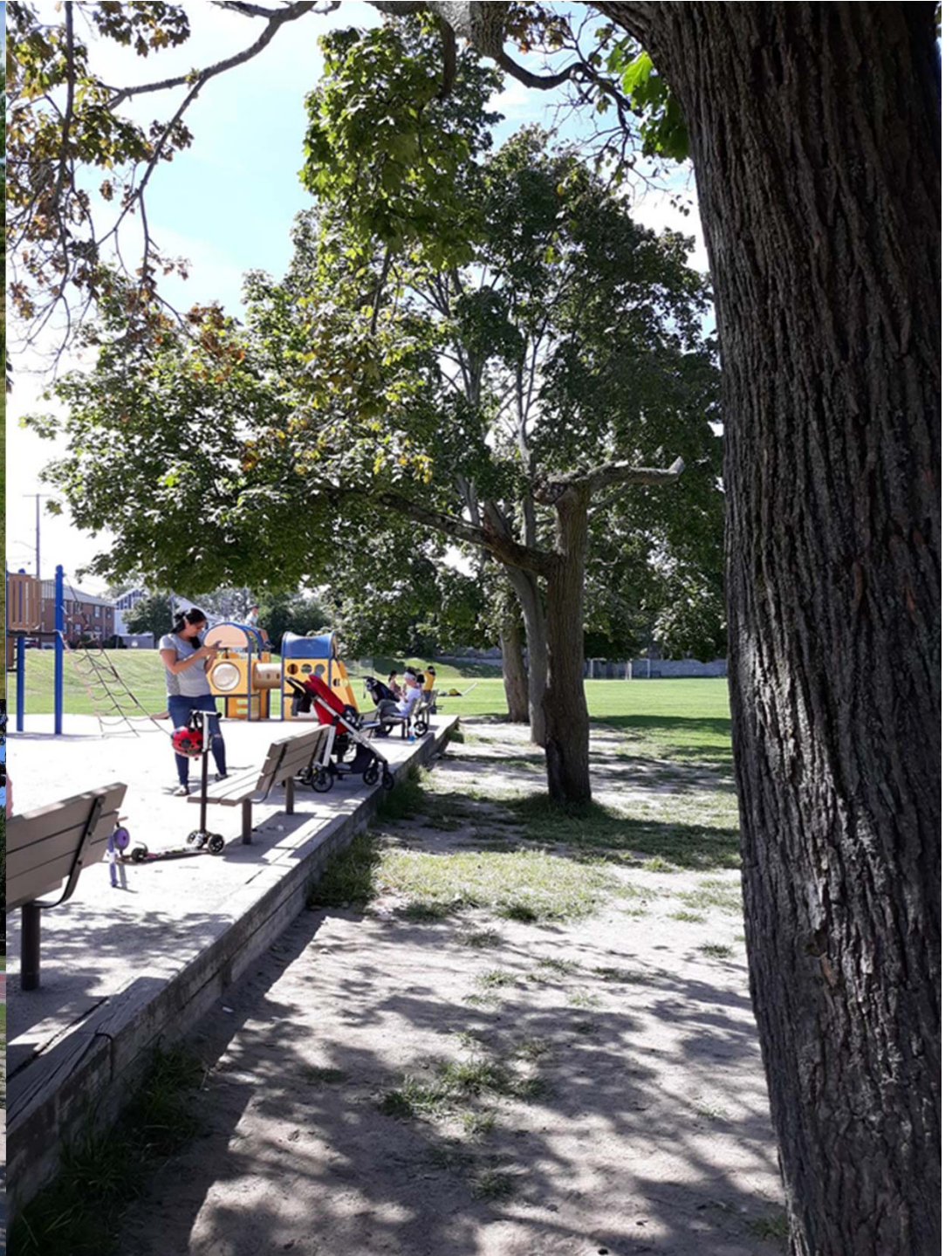














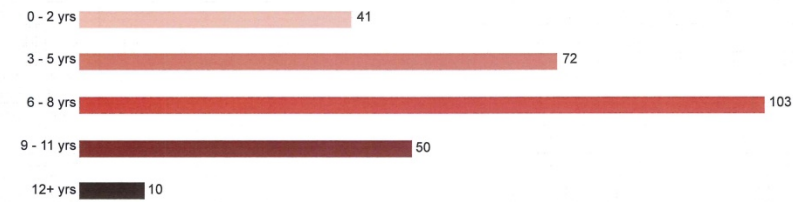
# Community Input

Who comprises the North Union Park Community?

## COMMUNITY SURVEY

151+ responses

"What are the ages of the children in your family or care who play at North Union playground? Please check all that apply."

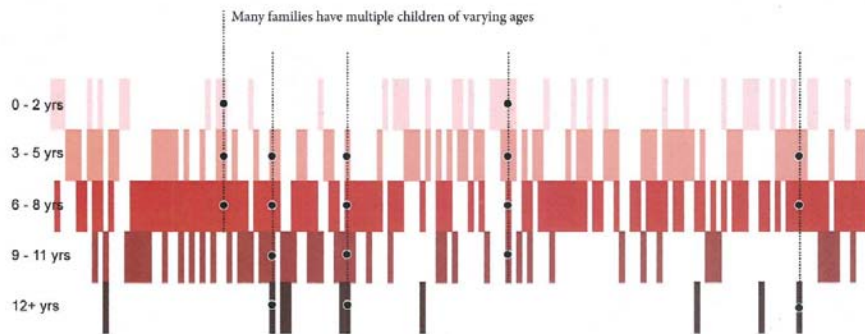


NORTH UNION PLAYGROUND AND CONNECTING PATHWAYS

PRELIMINARY COMMUNITY INPUT

NOVEMBER 18, 2019

Who comprises the North Union Park Community?



NORTH UNION PLAYGROUND AND CONNECTING PATHWAYS

PRELIMINARY COMMUNITY INPUT

NOVEMBER 18, 2019

What are the challenges? FUNCTIONAL + SAFETY ISSUES



Low/no maintenance for equipment and surfacing



Low/no tree care



No irrigation and compacted soils



Limited amenities (no drinking water)



Poor drainage



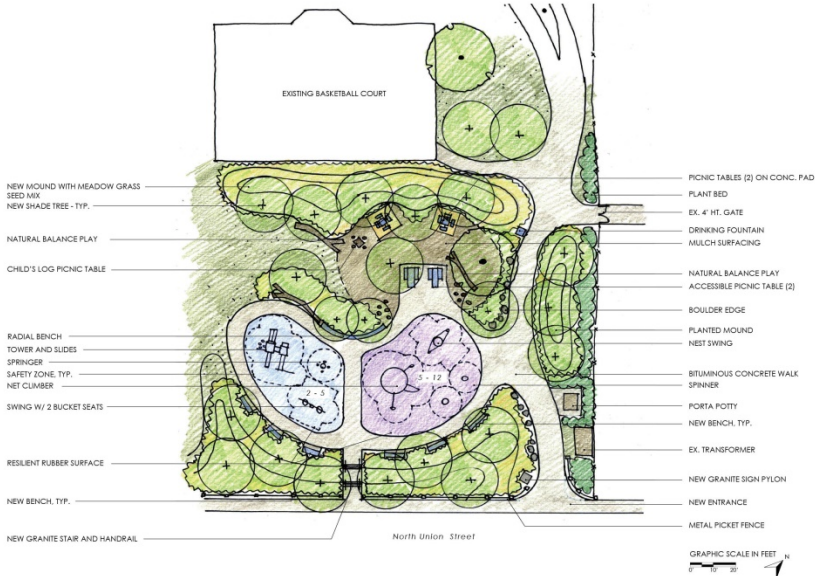
Erosion

High Use — 365 days a year, morning, noon, and evening





# Previous Alternatives



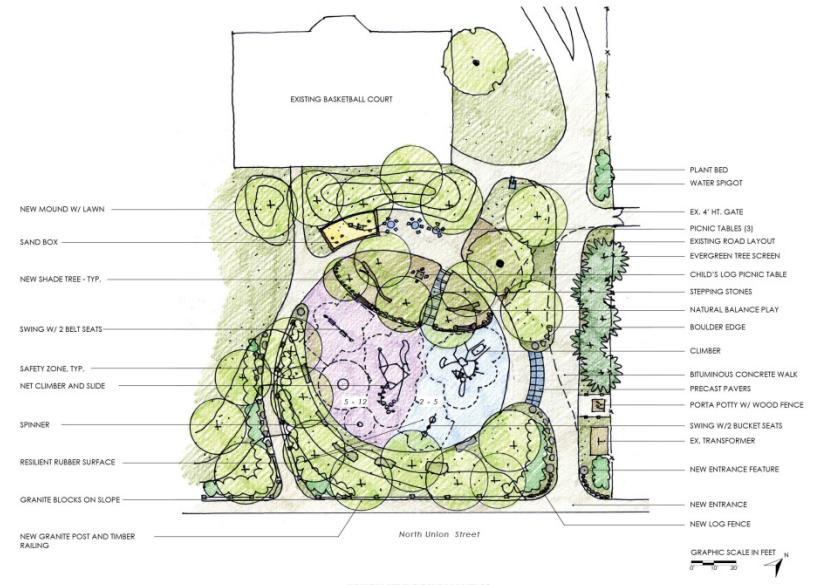
SCHEMATIC DESIGN 'ALT A'

**LUSSIANO / NORTH UNION PLAYGROUND**

Arlington, MA  
JANUARY 7, 2020



**A**



SCHEMATIC DESIGN 'ALT B'

**LUSSIANO / NORTH UNION PLAYGROUND**

Arlington, MA  
JANUARY 7, 2020



**B**

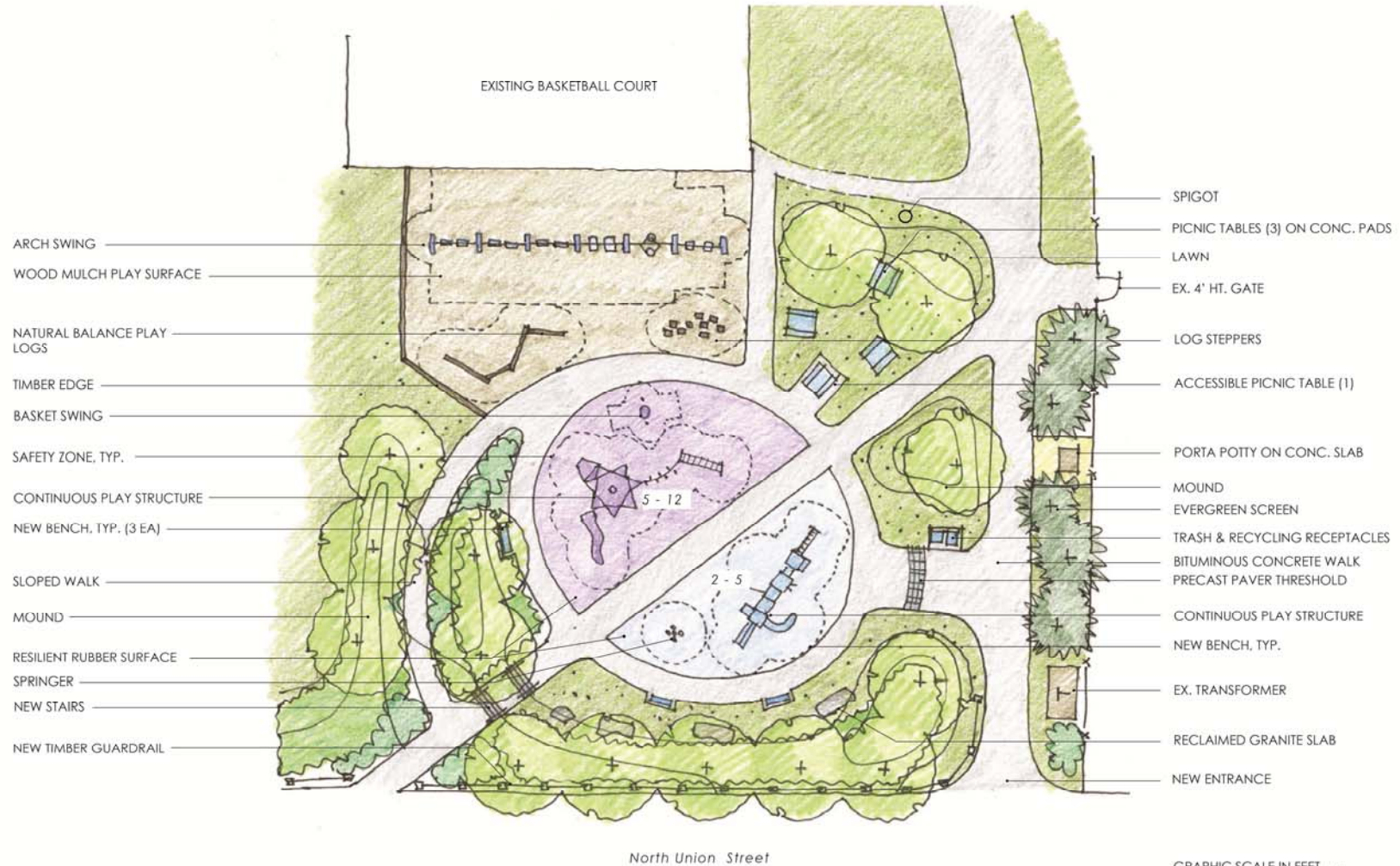


# Context Plan - Schematic Design





# Schematic Design



SCHEMATIC DESIGN PLAN

## LUSSIANO / NORTH UNION PLAYGROUND

Arlington, MA

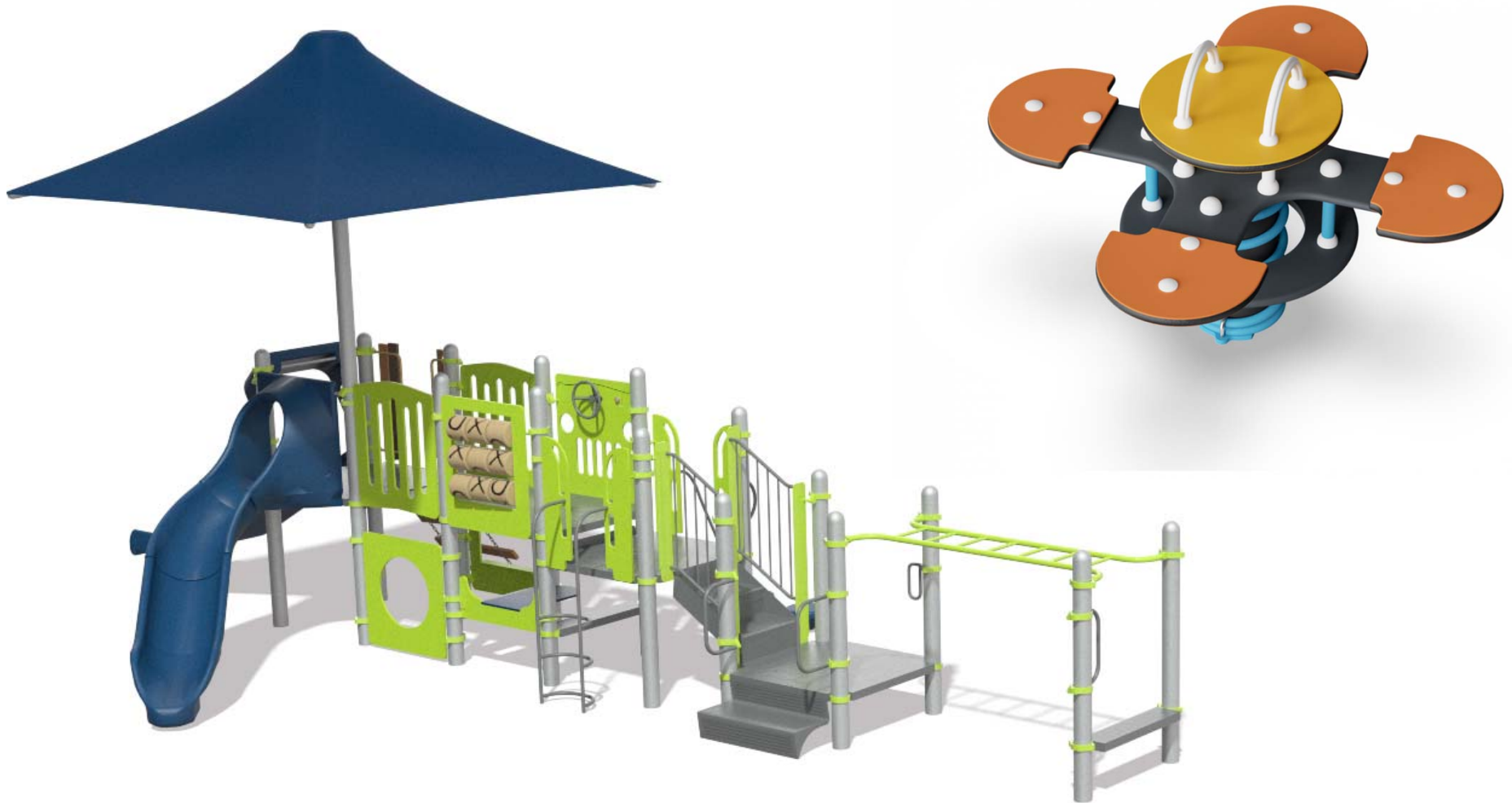
JANUARY 27, 2020



RAY DUNETZ  
LANDSCAPE  
ARCHITECTURE

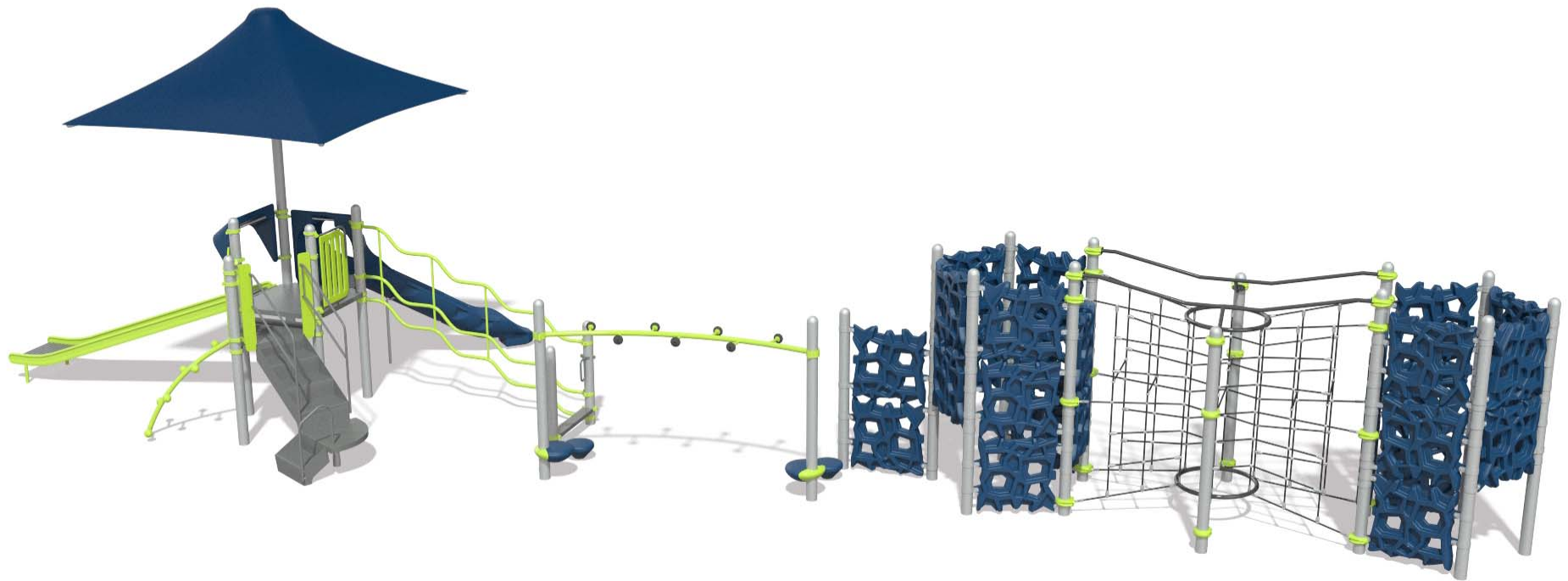


## 2-5 Year Olds - Climbing, Sliding, Rocking, Shade



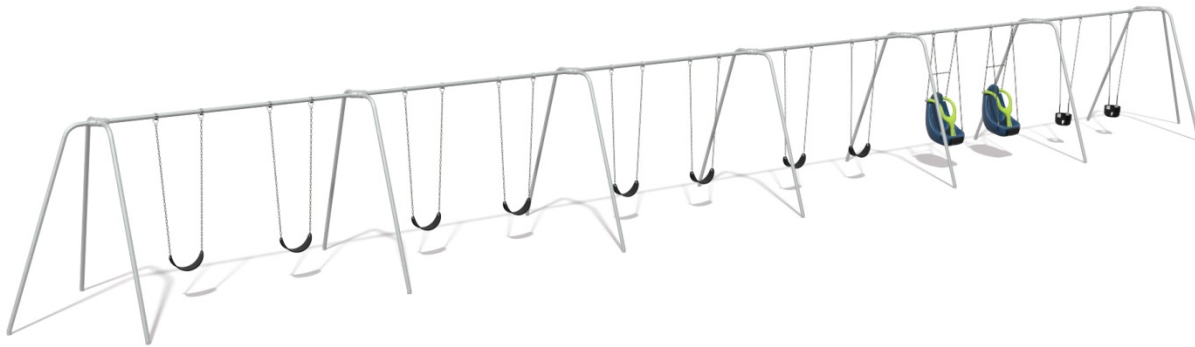


# 5-12 Year Olds - Climbing, Sliding, Shade





# Swinging - For all ages





# Nature Play





# Play Surfacing





# Site Furnishings





## Next Steps

1. Kickoff - 2019
2. Schematic Design December 2019
3. Community Meetings January 2020
4. Design –April 2020
5. Construction Documents- February –June 2020
6. Bid Period- July 2020
7. Contract Award- August 2020
8. Construction- September 2020





**THANK YOU !**



# Play Equipment

## 2-5 PLAY EQUIPMENT

Climbing



Weevos - LSI

Spinning



Saddle Spinner - LSI

Swinging



Toddler Swing - LSI

Rocking



We Saw - LSI



Playshaper - LSI



OmniSpin Spinner - LSI



A - Frame Swing - K



Daisy Springer - K

## 5-12 PLAY EQUIPMENT

Climbing



Cosmo - B

Spinning



Flywheel Spinner - LSI

Swinging



Single Post Swings - LSI

Balancing



Spring Pod Bouncer - LSI



13 Post Netplex - LSI



Curva Spinner - LSI



Cloud 9 - B



Stand-up Seesaw - LSI



## LUSSIANO / NORTH UNION PLAYGROUND

Arlington, MA

JANUARY 7, 2020



RAY DUNETZ  
LANDSCAPE  
ARCHITECTURE



# Spinning

5-12 year olds





# Balancing

5-12 year olds





# Spinning

2-5 year olds

