

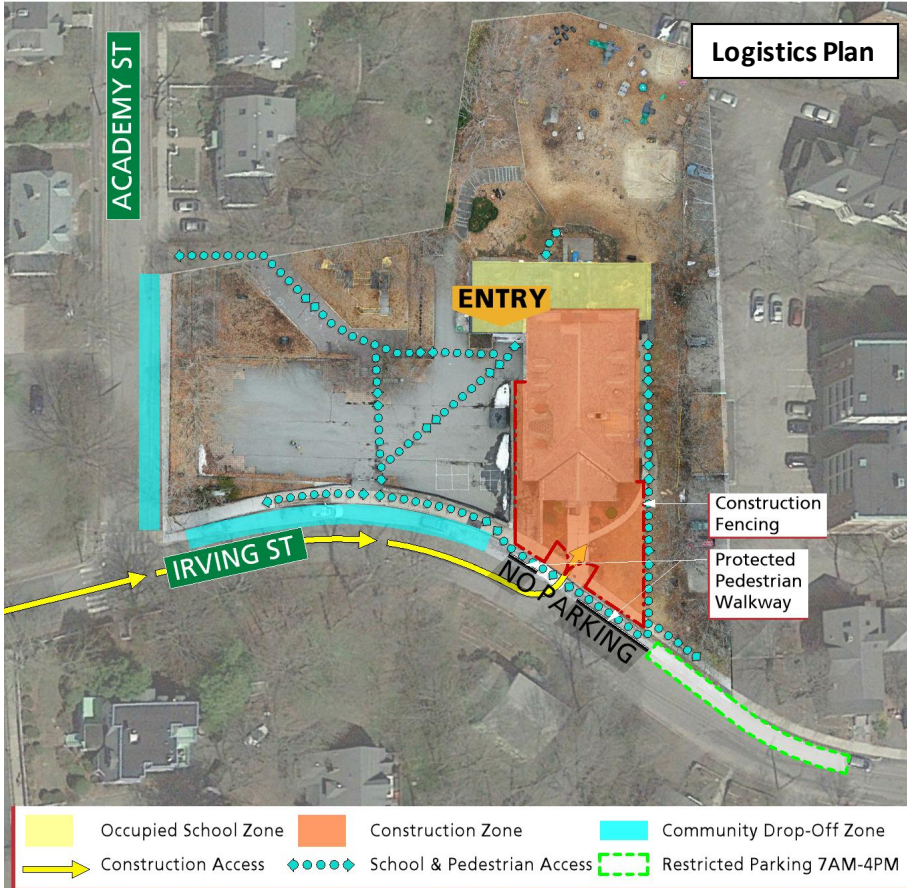


Arlington High School Building Project

Parmenter School Abutter Notice (Monthly)

Parmenter renovation begins for temporary housing of the Menotomy Preschool

Construction Schedule: March 16, 2020 – August 2020



Construction Details

Construction work hours will be Monday through Friday, 7am – 4pm. Overtime and Saturday work may be required as the schedule develops. Material deliveries and other work will be coordinated around the school and traffic schedules to create as little disruption as possible.

Construction workers will not be permitted to park on-site and in the surrounding neighborhood.

There will be limited parking on Irving Street throughout construction. Current 15-minute parking for community drop-off/pick-up will remain with exception to the no parking zone directly in front of the Parmenter Irving Street entrance. There will be a dedicated construction delivery zone at approximately 5 spaces on Irving Street (shown in green on the logistics plan). This area will be in use from 7AM – 4PM, Monday through Friday.

Protected pedestrian walkways will be implemented on Irving Street. All construction work will be properly fenced off to maintain community safety at all times.

Abutter Notices will be distributed on a monthly basis.

Project Details

Menotomy Preschool, currently located at the High School, will be temporarily relocated to the Parmenter School during construction of the new High School. The Parmenter School will require renovation in order to accommodate the preschool, including the addition of an elevator to ensure full accessibility. Construction will commence next week (3/16) and last through the end of August.

For immediate, on-site assistance contact Hal Raymond, Skanska Site Representative, (617) 352-8593.

For more information, visit www.ahsbuilding.org.

Email questions or concerns to ahsbuilding@arlington.k12.ma.us.