

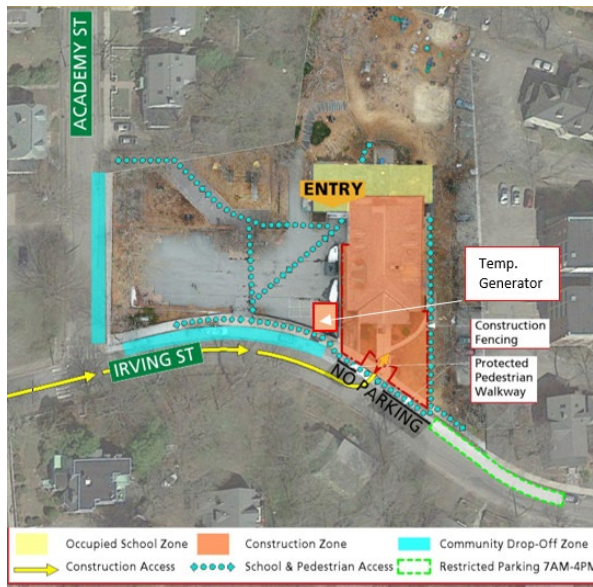
Parmenter Fit-Out Project Temporary Generator Use Notice

Dear Parmenter School Abutters,

Please be advised that the Parmenter School new electric elevator installation will require the use of a temporary generator. The Arlington High School project team has been working closely and coordinating with Eversource to bring the upgraded permanent power by the end of June. However, due to Eversource's current workload and backlog due to COVID-19, Eversource is not able to provide this service until the end of July. To maintain the construction schedule and have the Parmenter School ready for the Menotomy Preschool move in, a temporary generator is required to provide the electrical power for the elevator installation and inspections. **The temporary generator is located within the construction staging of the project site (see picture below).** The generator will run from 7:00 AM – 3:30 PM on weekdays, and on weekends only as required.

Parmenter Fit-Out Project Details:

Menotomy Preschool, currently located at the High School, will be temporarily relocated to the Parmenter School during construction of the new High School. The Parmenter School requires renovations in order to accommodate the preschool, including the addition of the elevator to ensure full ADA accessibility.



Thank you,

AHS Project Team

SKANSKA

Skanska – Owner's Project Manager



CONSIGLI
Est. 1905

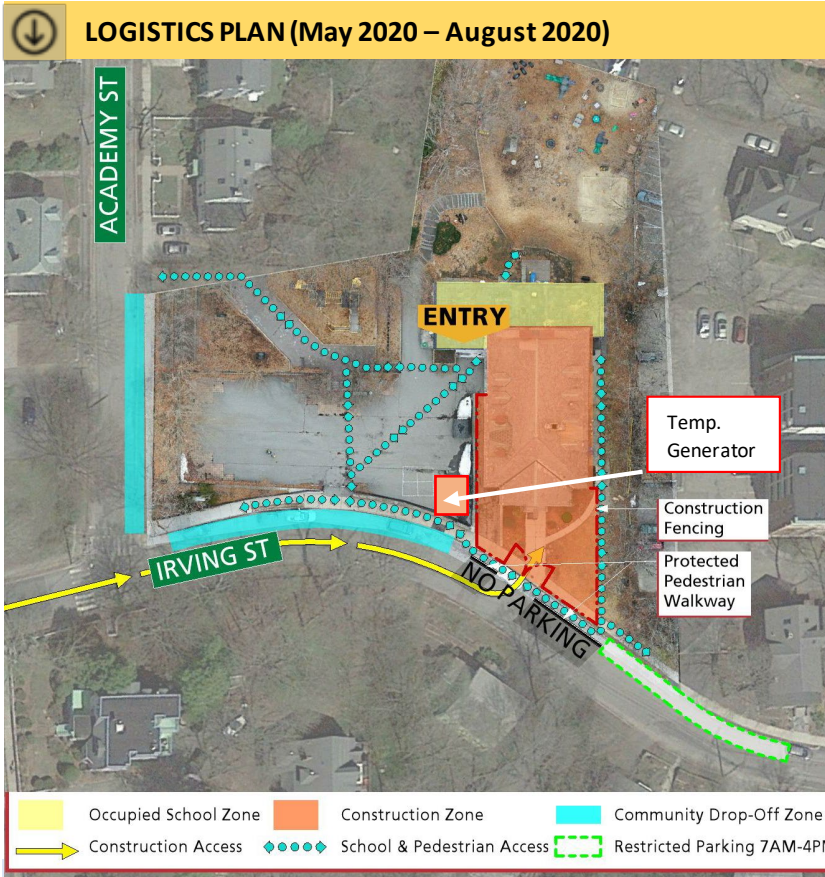
Consigli Construction Company



Arlington High School Building Project

Parmenter School Abutter Notice (Monthly) – July 2020

Construction Schedule: March 2020 – August 2020



Monthly Construction Look Ahead – July 2020

Specific work to be performed this month includes:

Public Way Impacts

- None at this time

Exterior Site Activities

- Temporary generator install
- Roof metal panels and slate install
- Dismantle scaffolding
- Final site grading

Interior Site Activities

- Elevator and handicap lift installation
- Complete drywall
- Millwork installation
- Remaining room finishes (flooring, paint, ceiling tiles, specialties)
- Startup mechanical systems

Project Milestones

- Mechanical startup
- Complete top floor and begin roof work
- Install handicap lift
- Start punch-list

Construction Details

Construction work hours will be Monday through Friday and follow local bylaws. Overtime and Saturday work may be required as the schedule develops. Material deliveries and other work will be coordinated around traffic schedules to create as little disruption as possible. Protected pedestrian walkways will be implemented on Irving Street. All construction work will be properly fenced off to maintain community safety at all times.

Construction workers are no longer permitted to park in the Parmenter School blacktop area as Arlington public parks have reopened for public use. There will be limited parking on Irving Street throughout construction. Current 15-minute parking on Irving St. and Academy St. will remain with exception to the no parking zone directly in front of the Parmenter Irving St. entrance. There will be a dedicated construction delivery zone on Irving Street (shown in green on the logistics plan). This area will be in use from 7AM – 4PM, Monday through Friday.

COVID-19 Update

The health and safety of the community and workers on-site are of the highest priority and were taken into consideration in all project-related decisions. Per Governor Baker’s announcement, construction work is deemed ‘essential’ and can continue. For the school to be completed on time, it is very important to maintain the original construction timeline as closely as possible. The construction team will also be maximizing the schedule as students are off-site during this time. Per the Consigli COVID-19 safety plan, all workers are required to have their temperature monitored upon arrival, protocol is in place for any worker exhibiting signs of COVID-19. The Town of Arlington continues to monitor all state and federal guidelines regarding best practices during this unusual time and will modify recommendations as necessary to maintain safety and health for our community and construction workers.

For immediate on-site assistance, contact Hal Raymond, Skanska Site Representative, (617) 352-8593.

For more information, visit www.ahsbuilding.org. | Email questions or concerns to ahsbuilding@arlington.k12.ma.us.



CONSIGLI
Est. 1905

PARMENTER SCHOOL

MONTHLY UPDATE - JULY

Progress Photographs – Taken 6/30/2020



Photograph 1: Roofing underlay complete on top floor



Photograph 2: Framing and electrical tie-in on 4th Floor



CONSIGLI
Est. 1905

PARMENTER SCHOOL

MONTHLY UPDATE - JULY



Photograph 3: Ceilings framed and installation of finishes underway



Photograph 4: Framing and mechanical, electrical, and plumbing (MEP) completed around CMU



CONSIGLI
Est. 1905

PARMENTER SCHOOL

MONTHLY UPDATE - JULY



Photograph 5: Mesh protection at shaft for elevator installation



Photograph 6: Handicap lift drywall completed



CONSIGLI
Est. 1905

PARMENTER SCHOOL

MONTHLY UPDATE - JULY



Photograph 7: Elevator controller installed



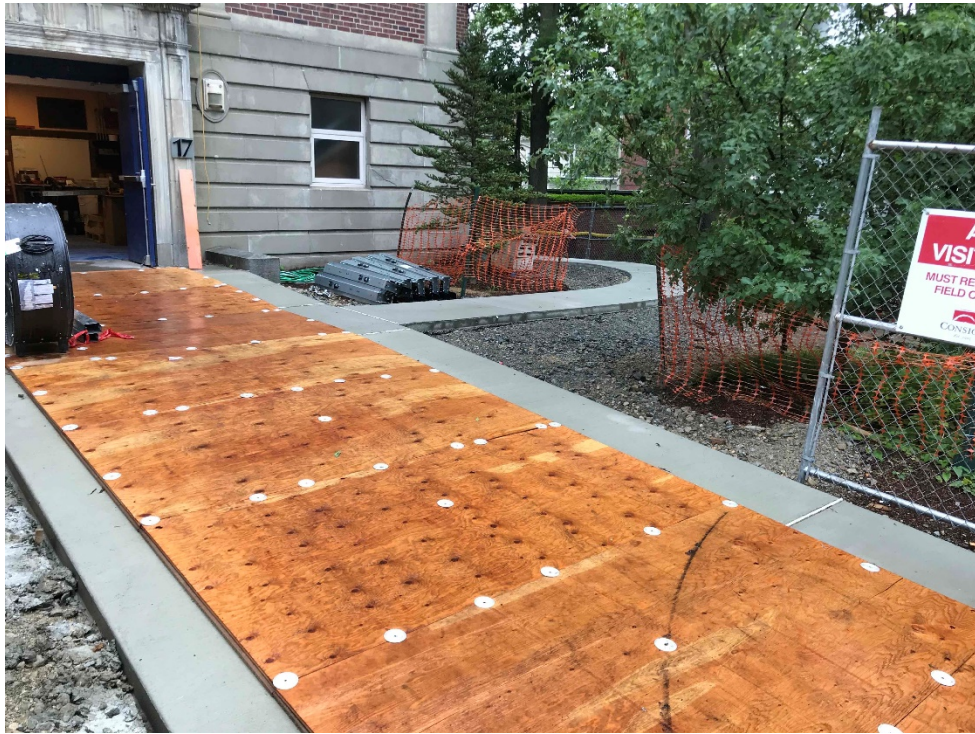
Photograph 8: Electrical switchgear and condenser units installed



CONSIGLI
Est. 1905

PARMENTER SCHOOL

MONTHLY UPDATE - JULY



Photograph 9: Sidewalks complete