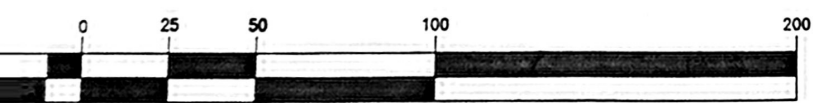


2) APPROXIMATE LOCATION OF BERM  
 HIGH PRESSURE GAS

**GRAPHIC SCALE**



( IN FEET )  
 1 inch = 50 ft.

1	10/18/00	BSC GROUPS REV.
No.	Date	Description
<b>Revisions</b>		
Drawn By	Designed By	Checked By
Approved By		

**RIZZO ASSOCIATES, INC.**

ENGINEERS AND ENVIRONMENTAL SCIENTISTS  
 235 West Central Street, Natick, MA 01760  
 Tel: (508) 651-3401 Fax: (508) 651-1189

Project Title

**Mugar Parcel  
 Arlington, Ma**

Sheet Title

**Abbreviated  
 Notice of  
 Resource Area  
 Delineation Plan**

Scale: 1"=50'

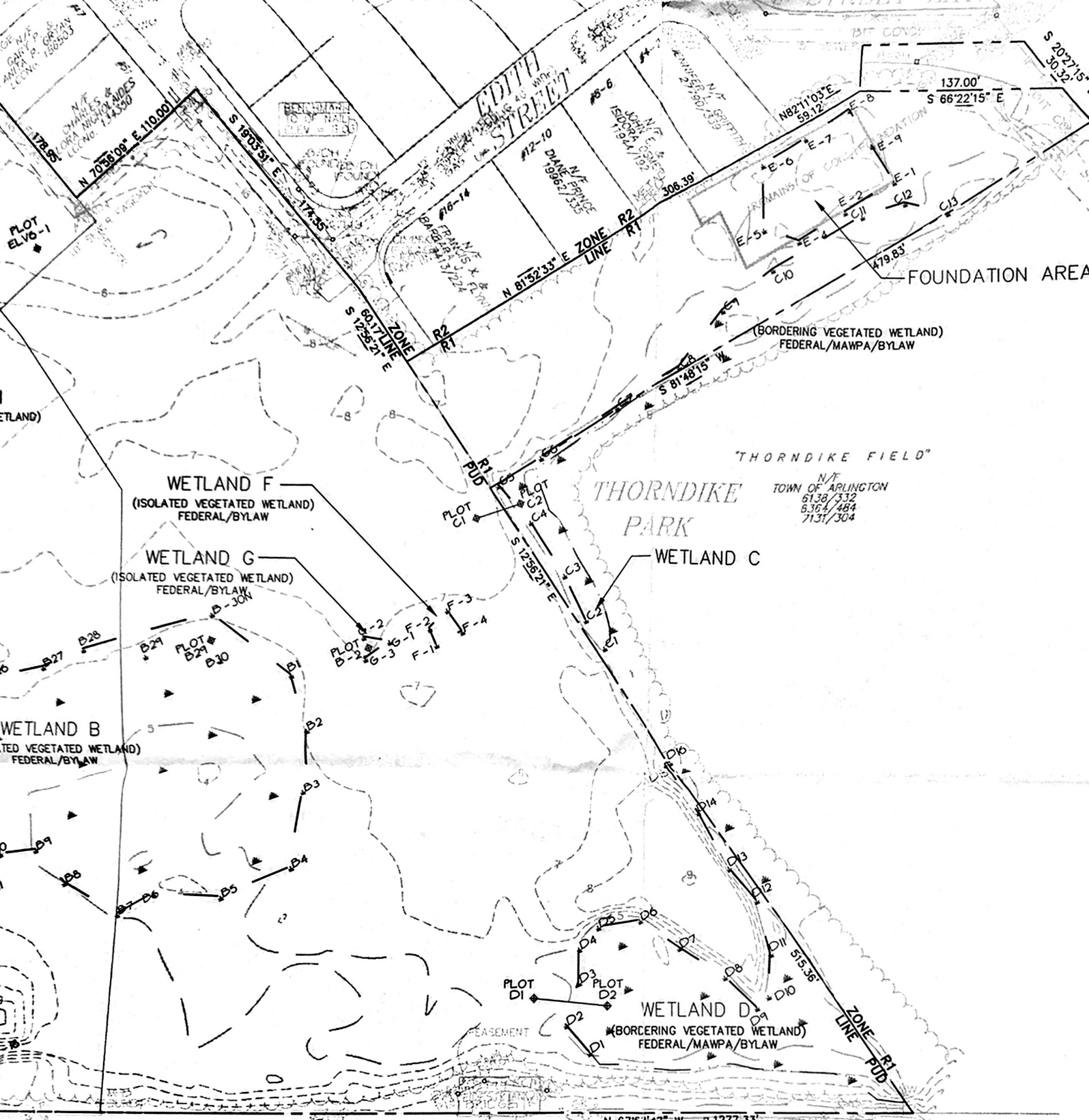
Job No.: 5776

File Name: 5776P-CWL

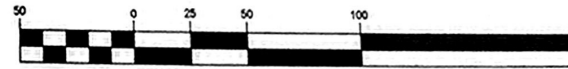
Date: 05/18/00

Sheet No.

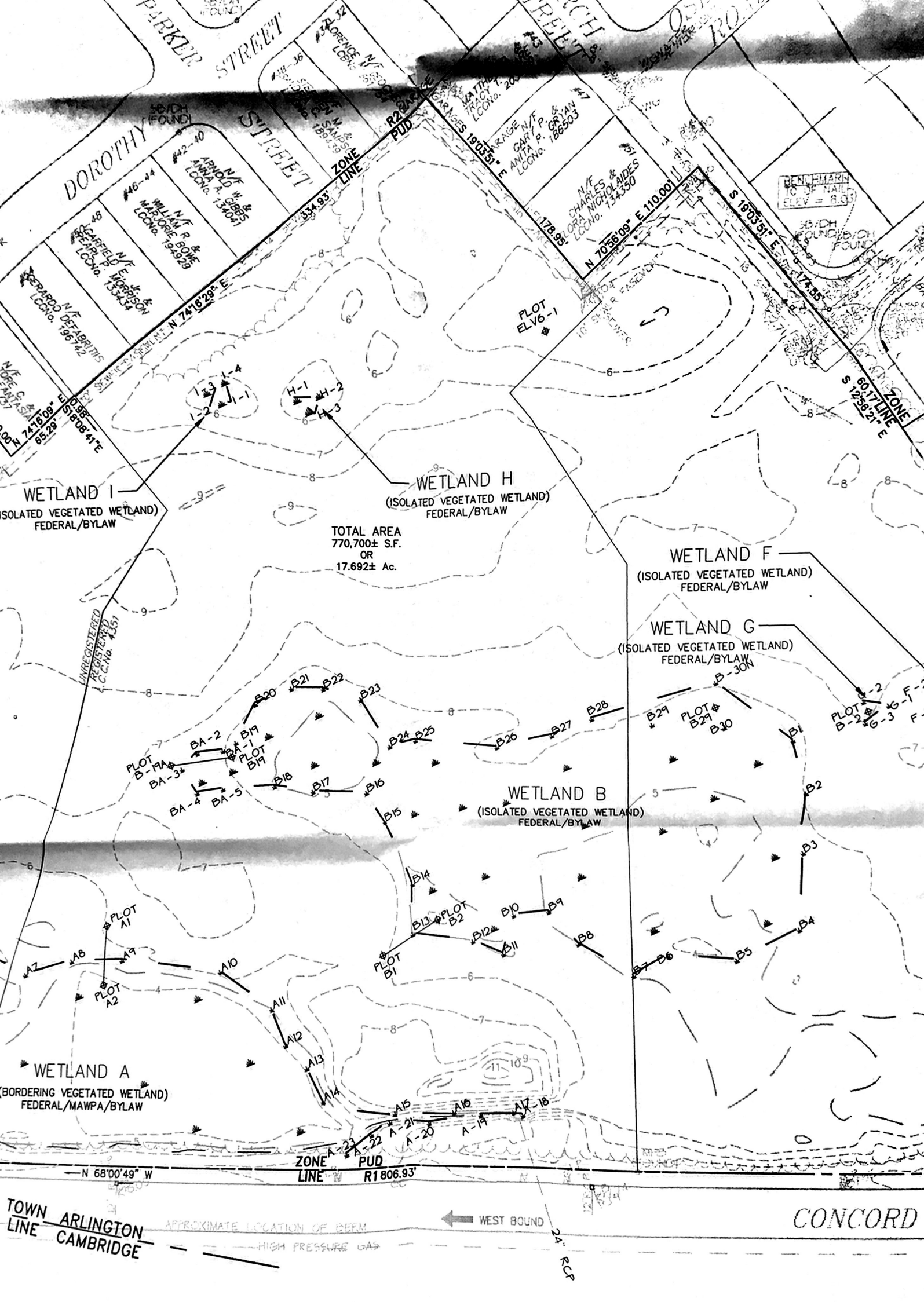
**A-1**

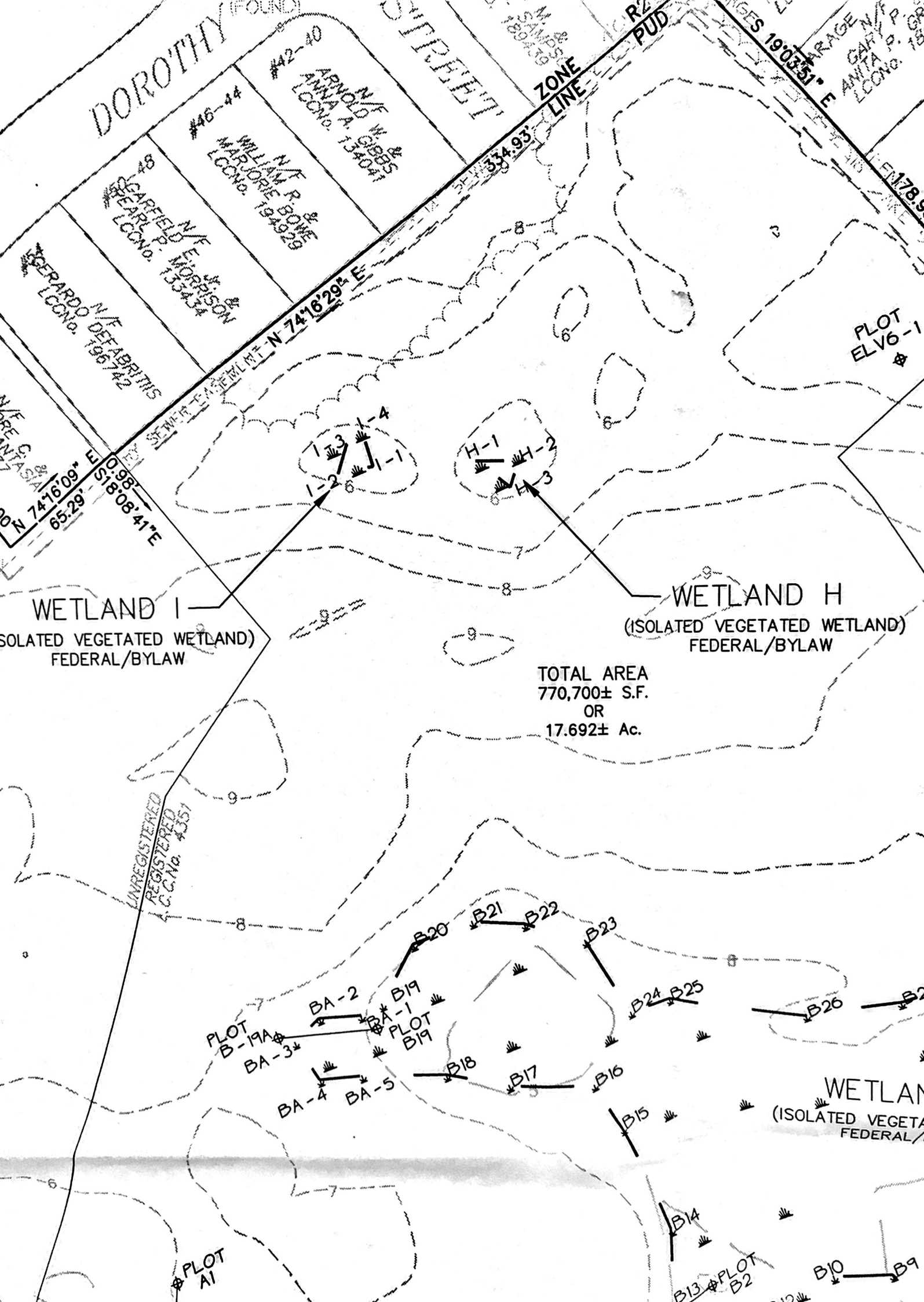


GRAPHIC SCALE

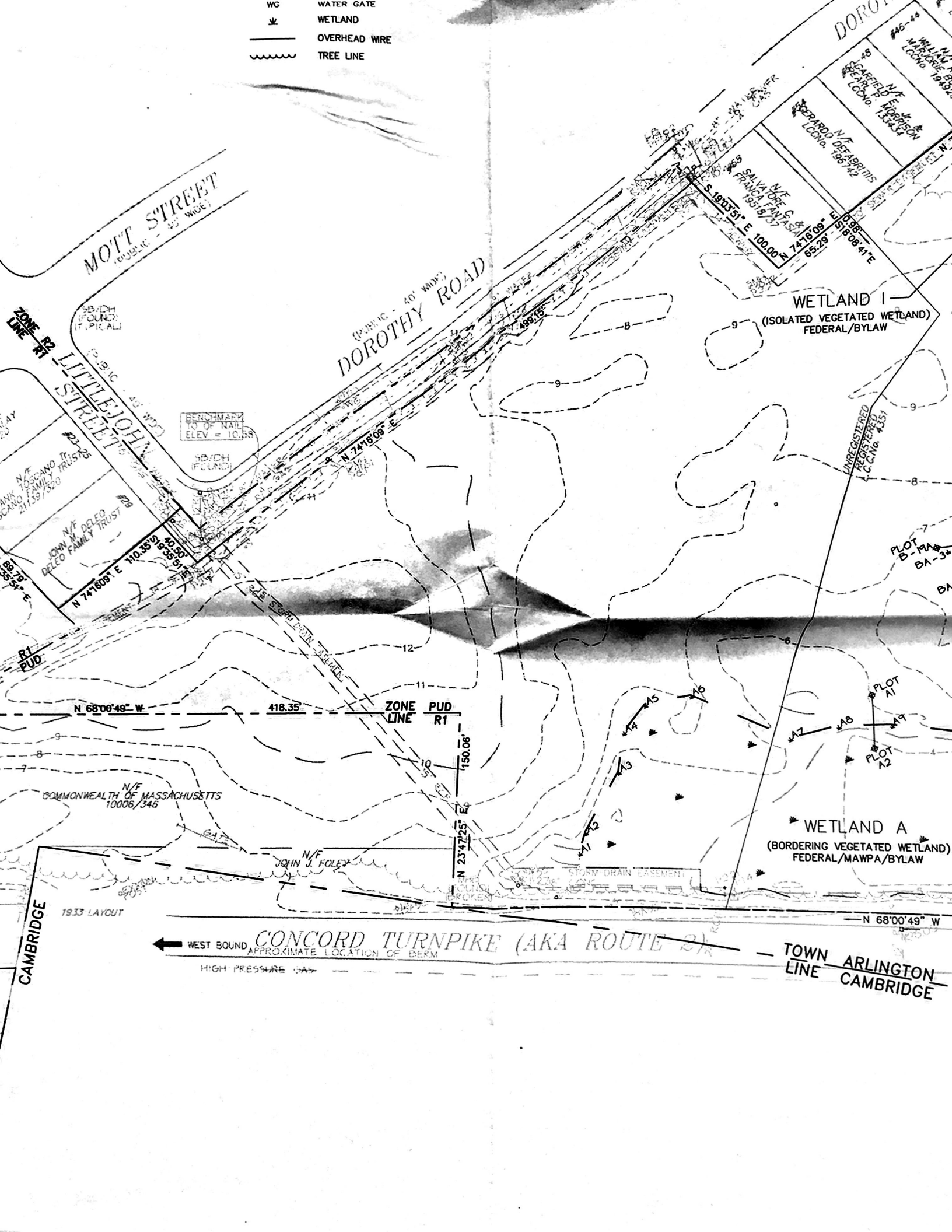


( IN FEET )  
1 inch = 50 ft.





- WG WATER GATE
- WETLAND
- OVERHEAD WIRE
- TREE LINE



MOTT STREET  
PUBLIC - 35' WIDE

DOROTHY ROAD  
PUBLIC - 40' WIDE

WETLAND I  
(ISOLATED VEGETATED WETLAND)  
FEDERAL/BYLAW

WETLAND A  
(BORDERING VEGETATED WETLAND)  
FEDERAL/MAWPA/BYLAW

CONCORD TURNPIKE (AKA ROUTE 2)  
APPROXIMATE LOCATION OF BERM

CAMBRIDGE

TOWN LINE ARLINGTON  
CAMBRIDGE

WEST BOUND HIGH PRESSURE GAS

ZONE LINE PUD R1

ZONE LINE PUD R1

JOHN W. DELEO  
DELEO FAMILY TRUST  
N 74°18'08" E 110.35' 40.50'  
N 74°18'08" E 19°35'51" E

BENCHMARK  
TOP OF NAIL  
ELEV = 10.85

COMMONWEALTH OF MASSACHUSETTS  
10006/346

JOHN J. FOLEY

STORM DRAIN EASEMENT

COURSE BROKEN

N 68°00'49" W

N 68°00'49" W

418.35

N 23°47'25" E 150.06'

N 74°18'08" E

S 100°15'1" E 100.00'

N 74°18'08" E 69.79'

N 74°18'08" E 69.79'

N 74°18'08" E 69.79'

N 74°18'08" E 69.79'

N 74°18'08" E 69.79'

N 74°18'08" E 69.79'

N 74°18'08" E 69.79'

N 74°18'08" E 69.79'

N 74°18'08" E 69.79'

N 74°18'08" E 69.79'

N 74°18'08" E 69.79'

N 74°18'08" E 69.79'

N 74°18'08" E 69.79'

N 74°18'08" E 69.79'

N 74°18'08" E 69.79'

N 74°18'08" E 69.79'

N 74°18'08" E 69.79'



MOTT STREET  
(PUBLIC - 45' WIDE)

DOROTHY ROAD  
(PUBLIC - 40' WIDE)

ZONE R2  
LINE R1

LITTLEJOHN STREET  
(PUBLIC - 40' WIDE)

BENCHMARK  
TO OF NAIL  
ELEV = 10.88

SB/CH  
(FOUND)

#50  
N/F  
JAMES A. &  
SHEILA MALAY  
26178/420

#23-25  
N/F  
FRANK TOSCANO TRUSTS  
21159/320

#29  
N/F  
JOHN M. DELEO  
FAMILY TRUST

S 19°35'51" E  
88.79'

N 74°18'09" E  
110.35'

S 19°35'51" E  
40.90'

N 74°18'09" E

ZONE R1  
LINE R1  
PUD

N 68°00'49" W 418.35'

ZONE R1  
LINE R1  
PUD

150.06'

N/F  
COMMONWEALTH OF MASSACHUSETTS  
10006/346

N/F  
JOHN J. FOLEY

STORM DRAIN EASEMENT

CAMBRIDGE

1933 LAYOUT

WEST BOUND CONCORD TURNPIKE (AKA ROUTE 1A)  
APPROXIMATE LOCATION OF BERM

HIGH PRESSURE GAS

