

Virtual Forum



CONNECT
Arlington
SUSTAINABLE
TRANSPORTATION PLAN



July 30, 2020



N NELSON
NYGAARD



Tonight's Meeting

01 | Zoom Meeting Guidelines and Format

02 | Connect Arlington Overview

03 | Q & A

04 | Breakout Groups

05 | Q & A

06 | Next Steps

Project Goals

- 20-year vision for the development of the transportation system in Arlington with a focus on improvements to existing system, equity, new technologies, and other innovations
- Builds upon Traffic & Circulation section of the Master Plan and other existing Town policies for Complete Streets and Traffic Rules and Regulations
- Develop priorities and recommendations for projects, programs, and policies
- Covers all aspects of transportation: walking, biking, public transit, driving, micromobility



Plan Development & Engagement

- Nelson\Nygaard lead consultant on project
- First tasks:
 - Collect existing conditions data for development of Transportation Fact Book
 - Develop Engagement Strategy
- Engagement & Public Outreach
 - Sustainable Transportation Plan Advisory Committee (STPAC)
 - Themed Focus Groups (Biking & Walking, Transportation for All Ages, Sustainability, Getting Around with Disabilities) – more in August
 - Transportation Survey – open from May to July
 - Virtual Forum



TOWN OF ARLINGTON SUSTAINABLE TRANSPORTATION PLAN

RFP #19-50

November 5, 2019

N NELSON
NYGAARD

What have we learned so far?

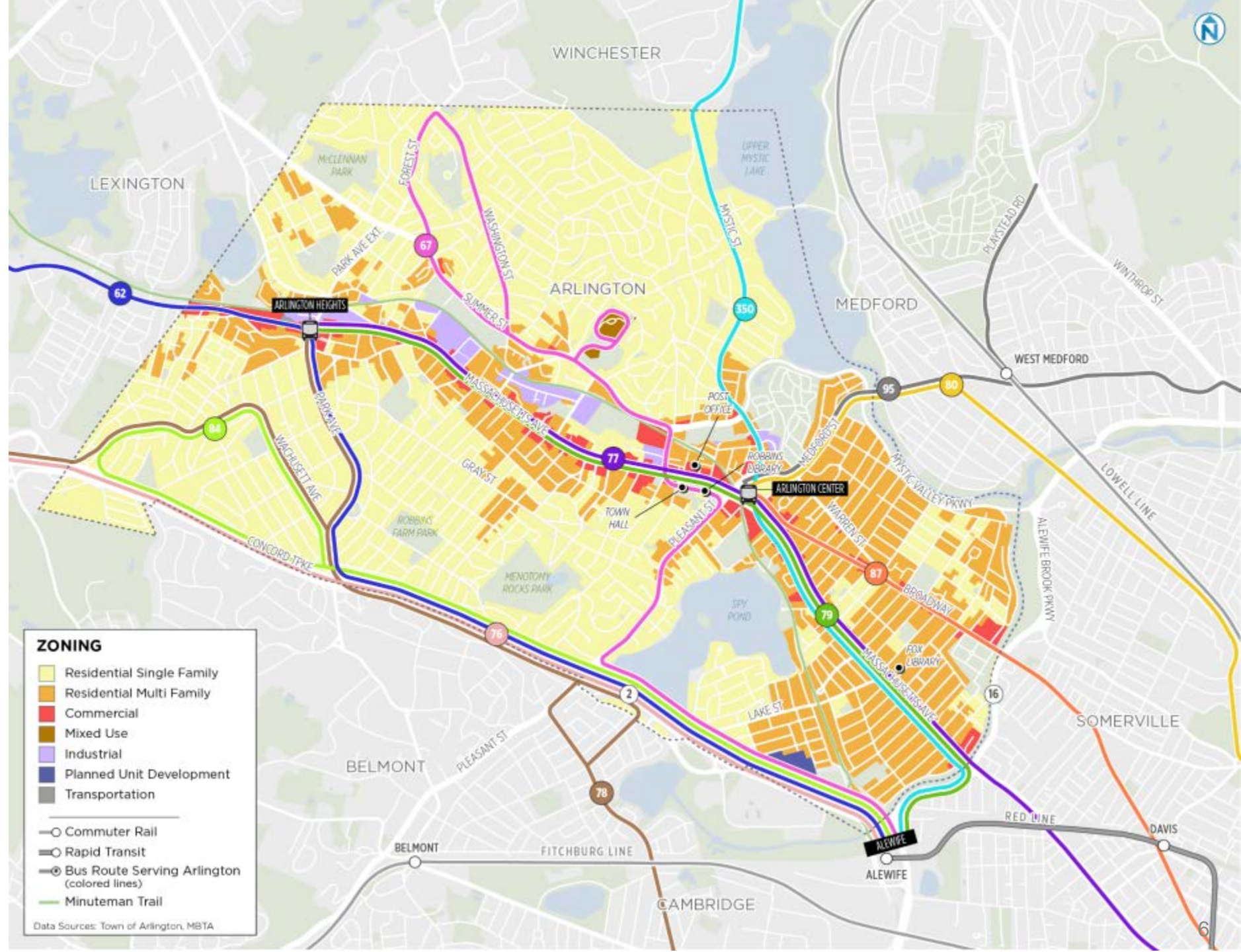
Work-to-Date & Transportation Fact Book

Geography influences land use, which influences transportation choice

Flatter areas include higher density housing and commercial activity.

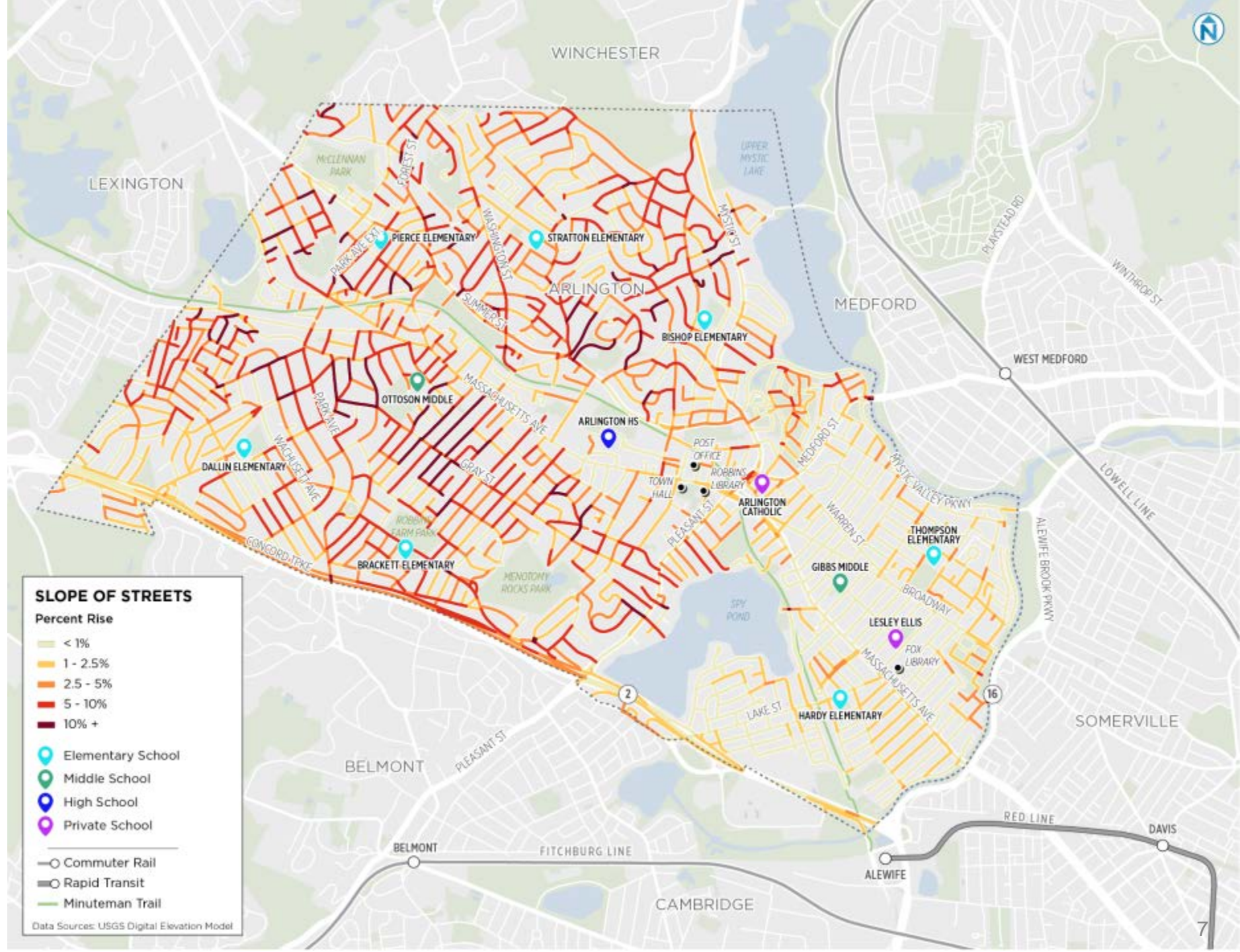
Hilly areas tend to be single family in character.

Transit corridors (and Minuteman Trail...a former rail right of way) run through valley.



Slope of street

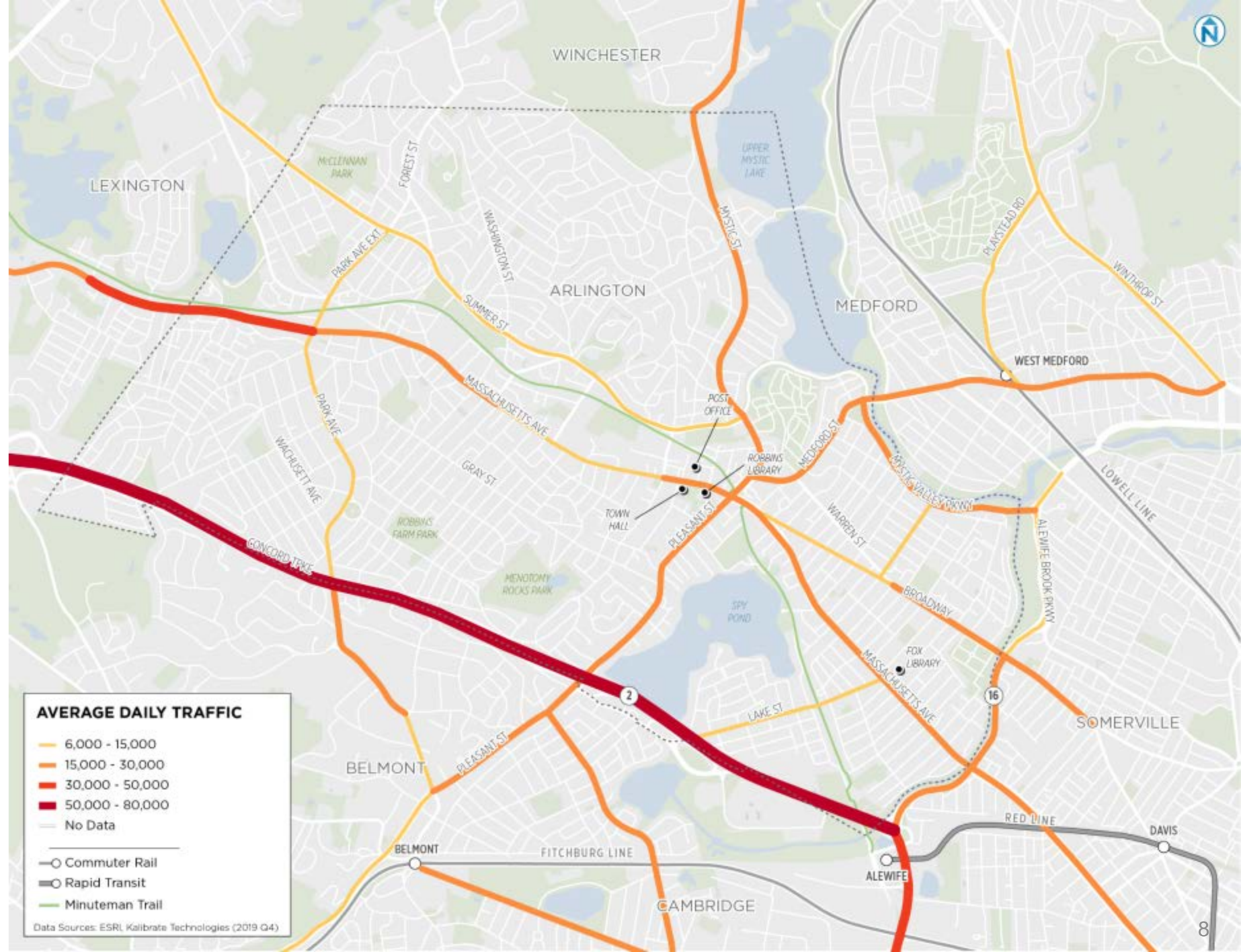
Land use patterns reflect topography, as do transportation corridors.



Traffic volumes

Historical volumes highlight which routes are most used.

- Local Streets channel drivers to:
- Collectors like Summer Street and Park Street, which connect to:
- Arterials like Mass Ave, Medford Street and Pleasant Street, which lead to
- Highways like Route 2 and to the north, I-95/Rte 128 and the region.

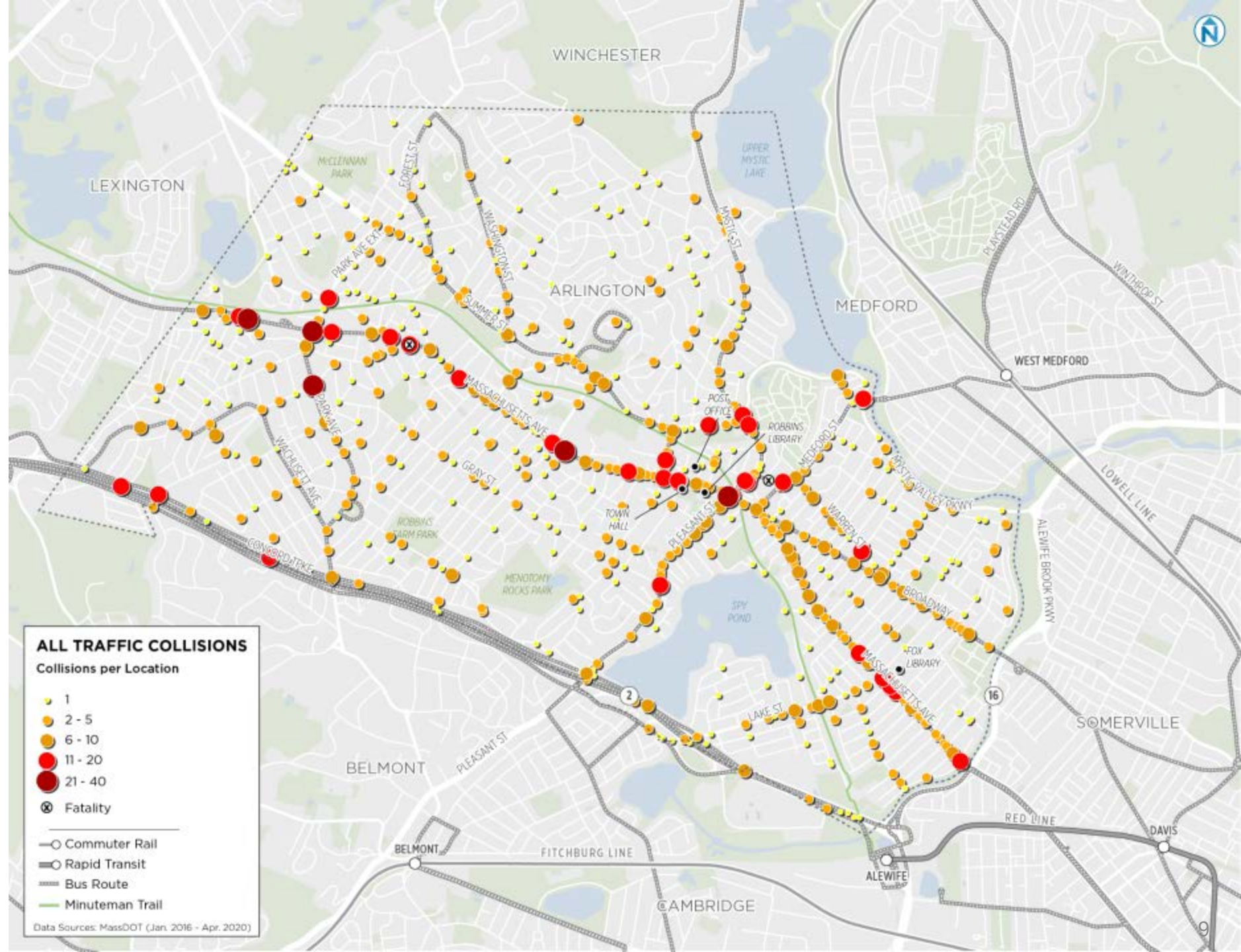


All Traffic Collisions

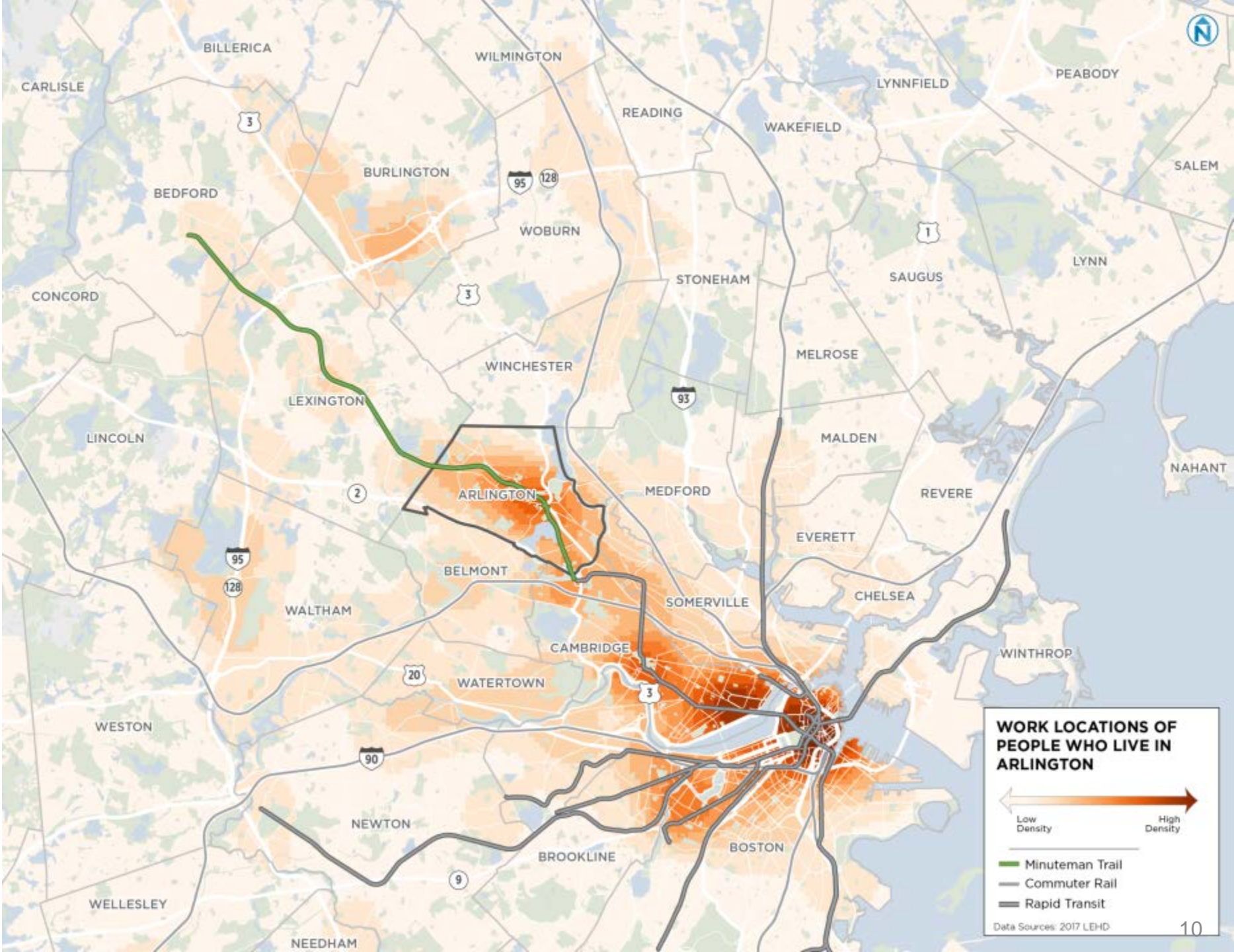
1,996 crashes recorded between January, 2016 and April, 2020.

Includes most recent fatal crashes at Chestnut St and Chestnut Terrace and Mass Ave and Appleton as well.

Although most crashes are clustered along major streets like Mass Ave and Broadway, there are many crashes recorded in the neighborhoods.

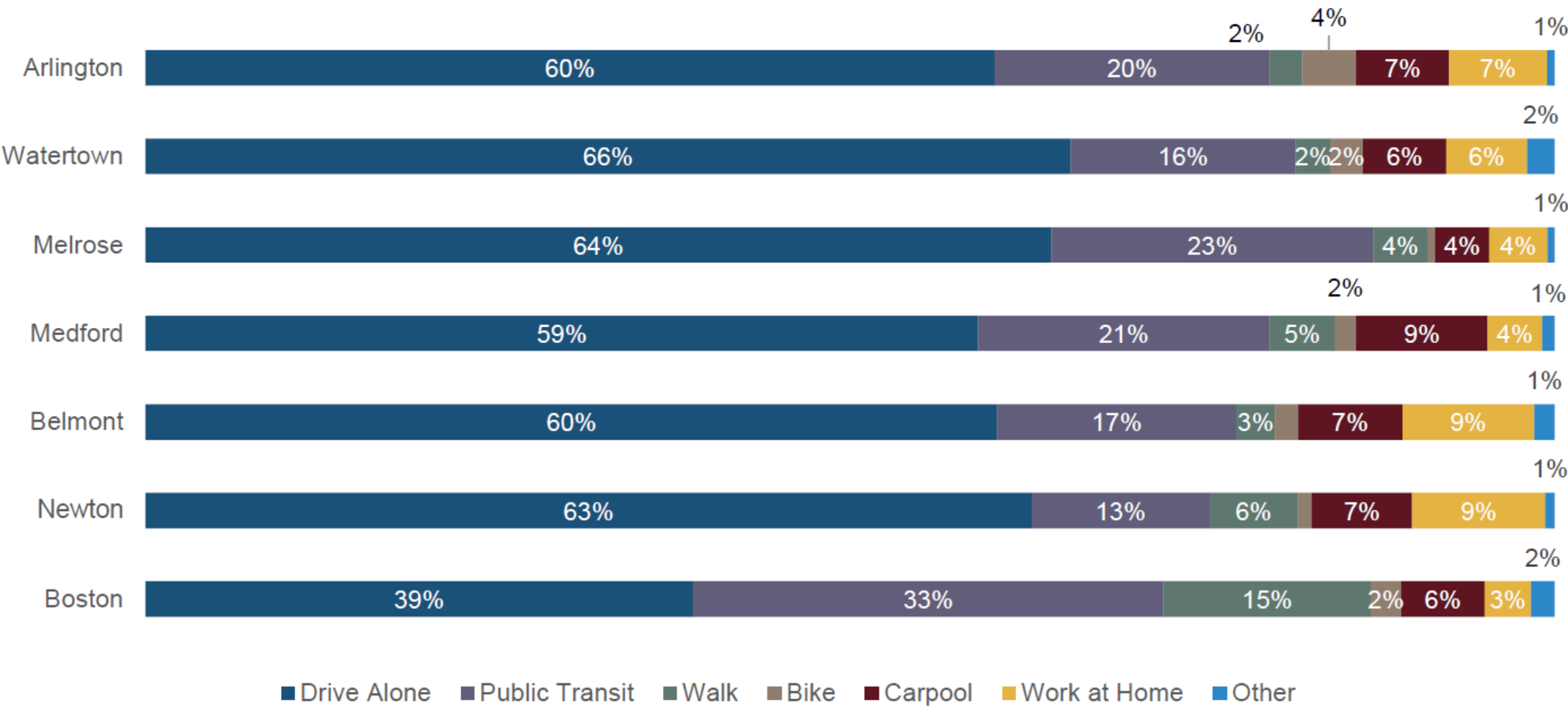


Commuting patterns: Where Arlington residents work



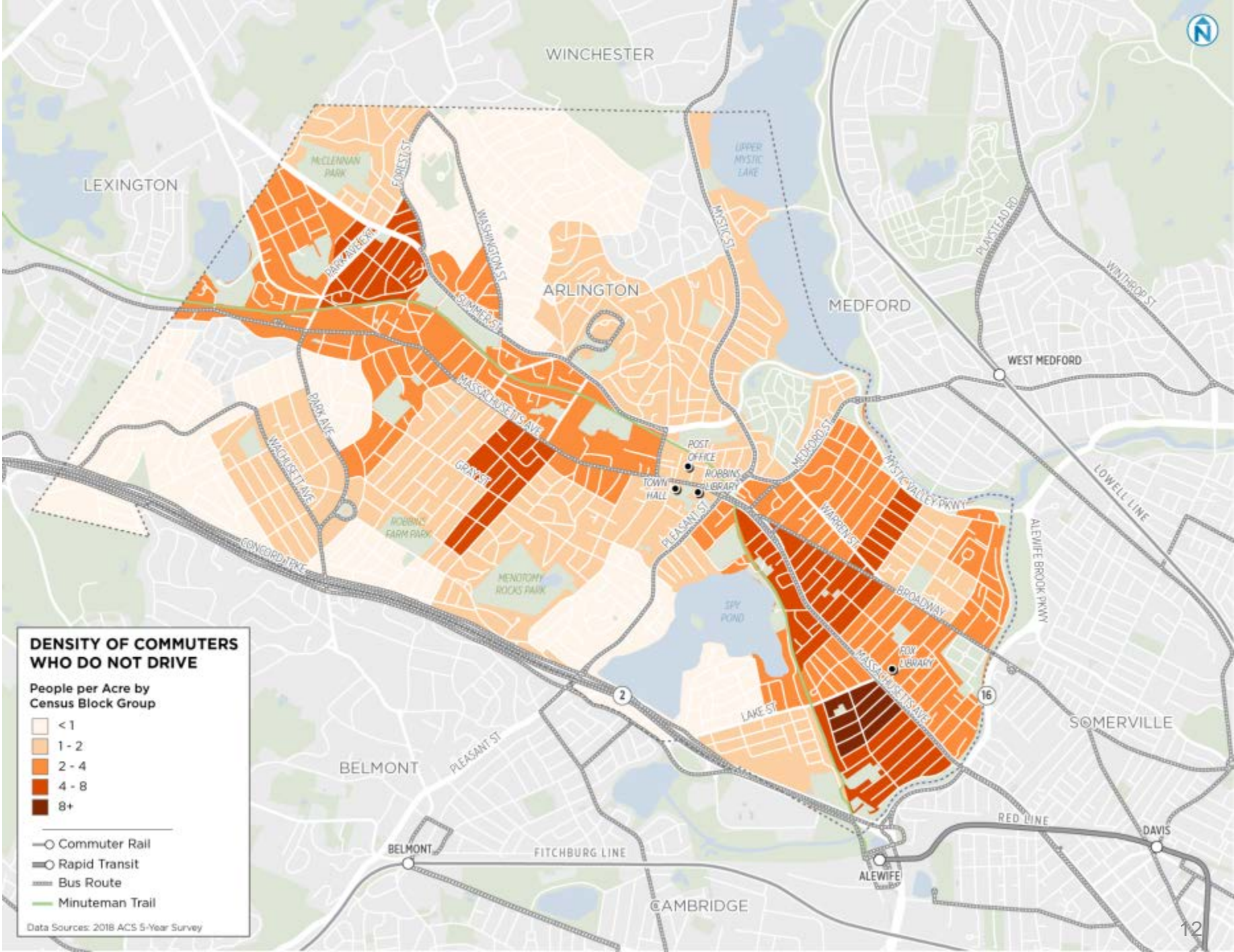
Commute share comparison communities

Figure 5-4 Arlington Peer Comparison: Mode



Data Source: [U.S. Census Bureau \(2018\). Sex of Workers by Means of Transportation to Work. 2018 ACS 5-Year Estimates.](#)

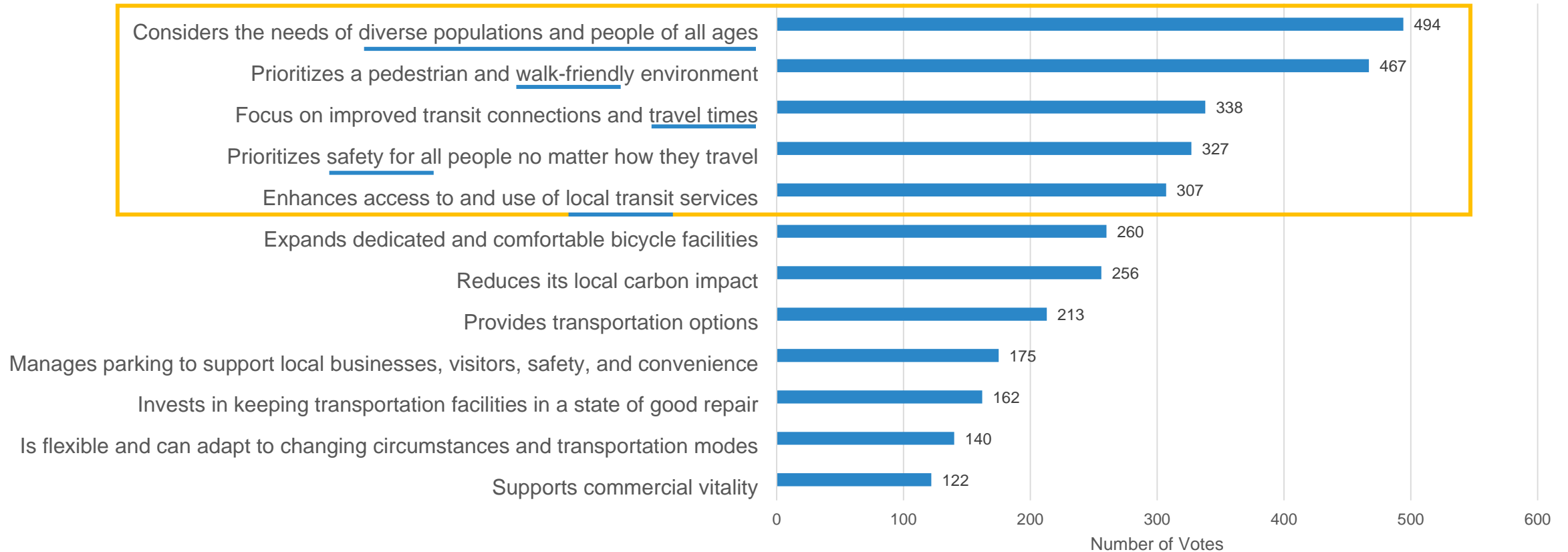
Non-driving commuters



Highlights of Transportation Survey Results

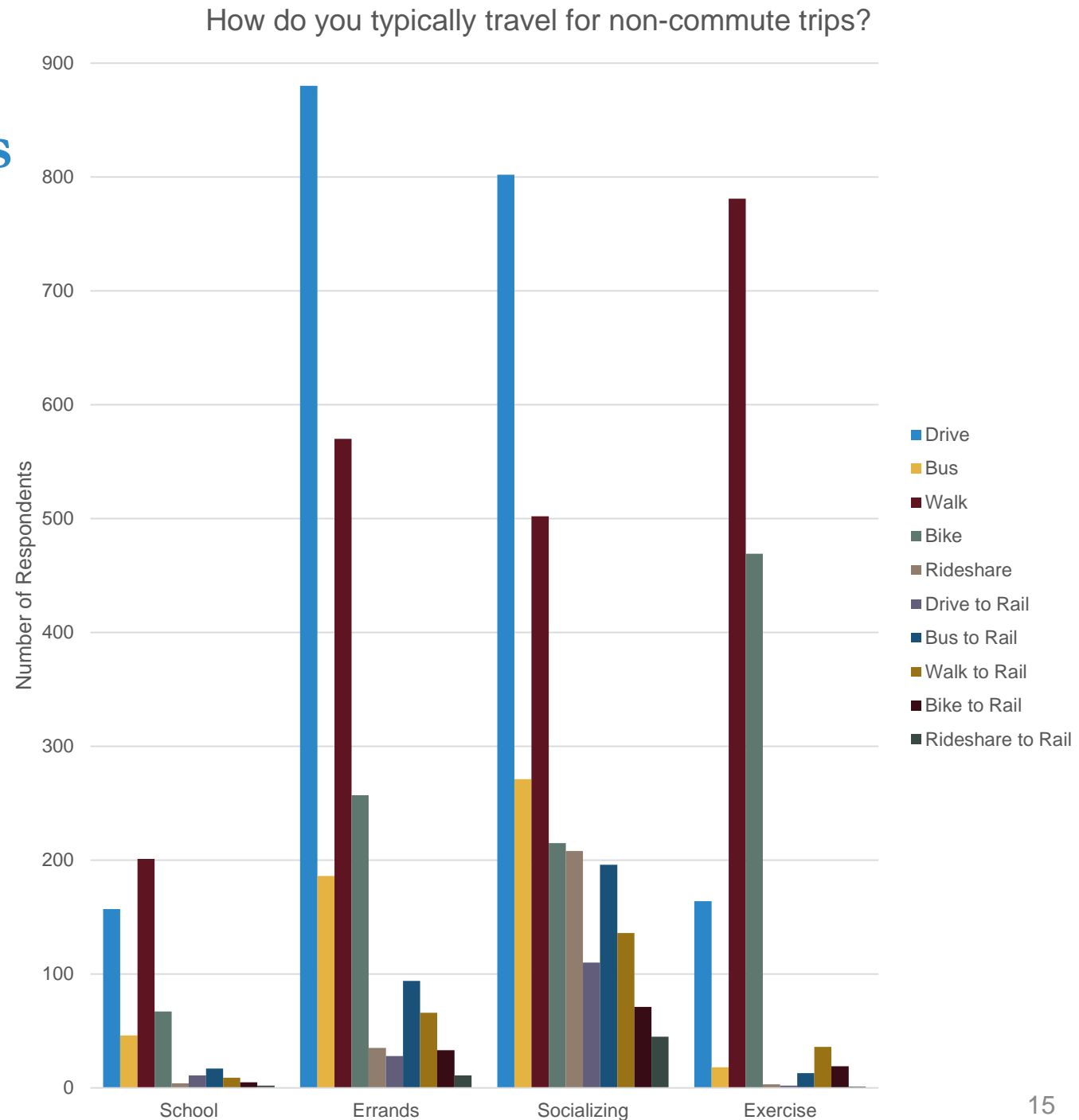
Survey Respondents Prioritize Diverse Populations, People of All Ages, and a Walk-Bike-Transit-Friendly Environment

Transportation plays many roles in supporting Arlington's future - help us prioritize which are most important to you.
Please pick your top THREE (3) goals for Arlington's transportation system.



Respondents Mostly Drive or Walk for Non-Commute Trips

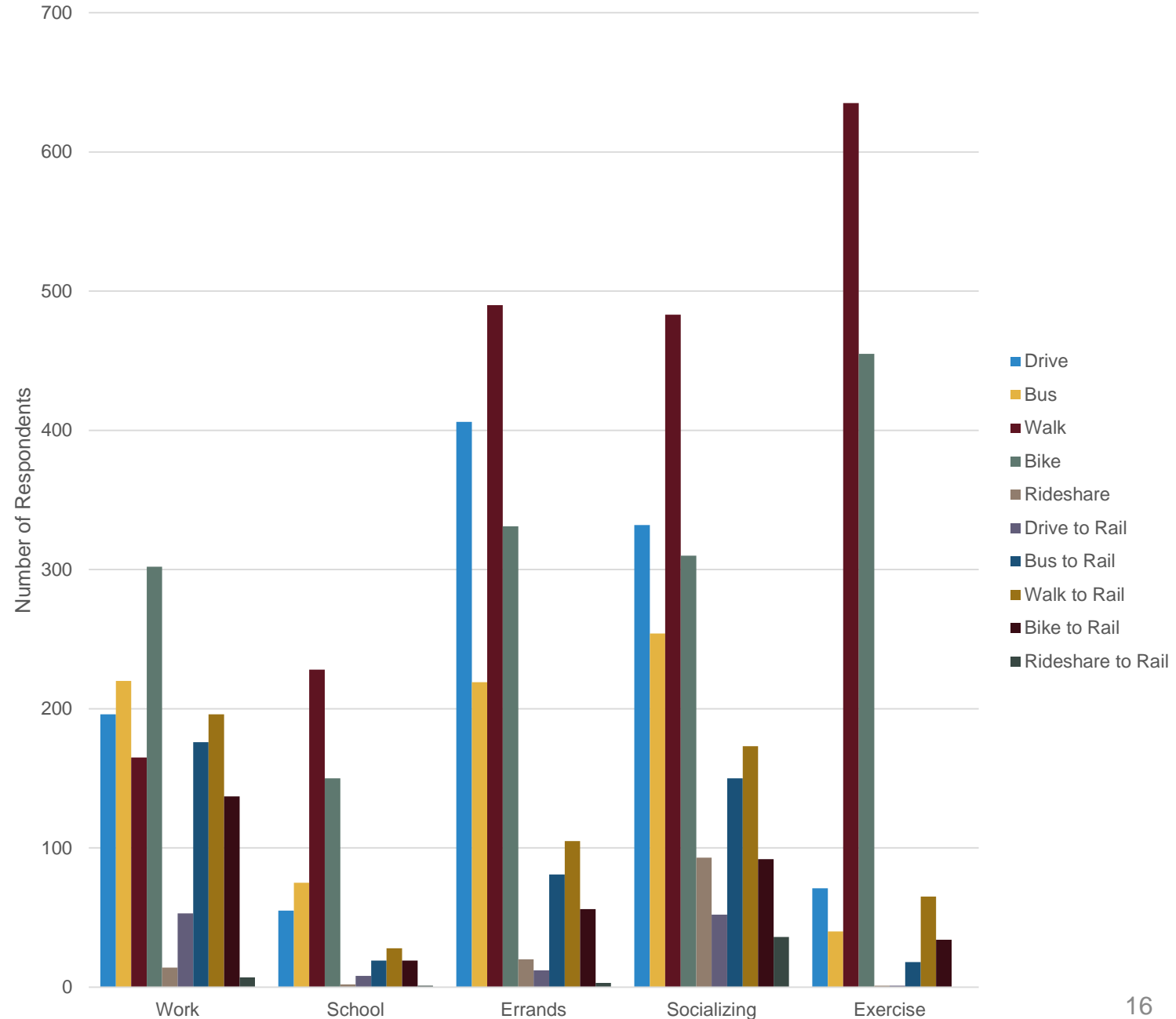
- Most people currently drive or walk to get to school, run errands, or socialize
- Socializing trips have the largest share of rideshare trips
- People overwhelmingly walk or bike to exercise



People Would Prefer to Walk or Bike More in the Future

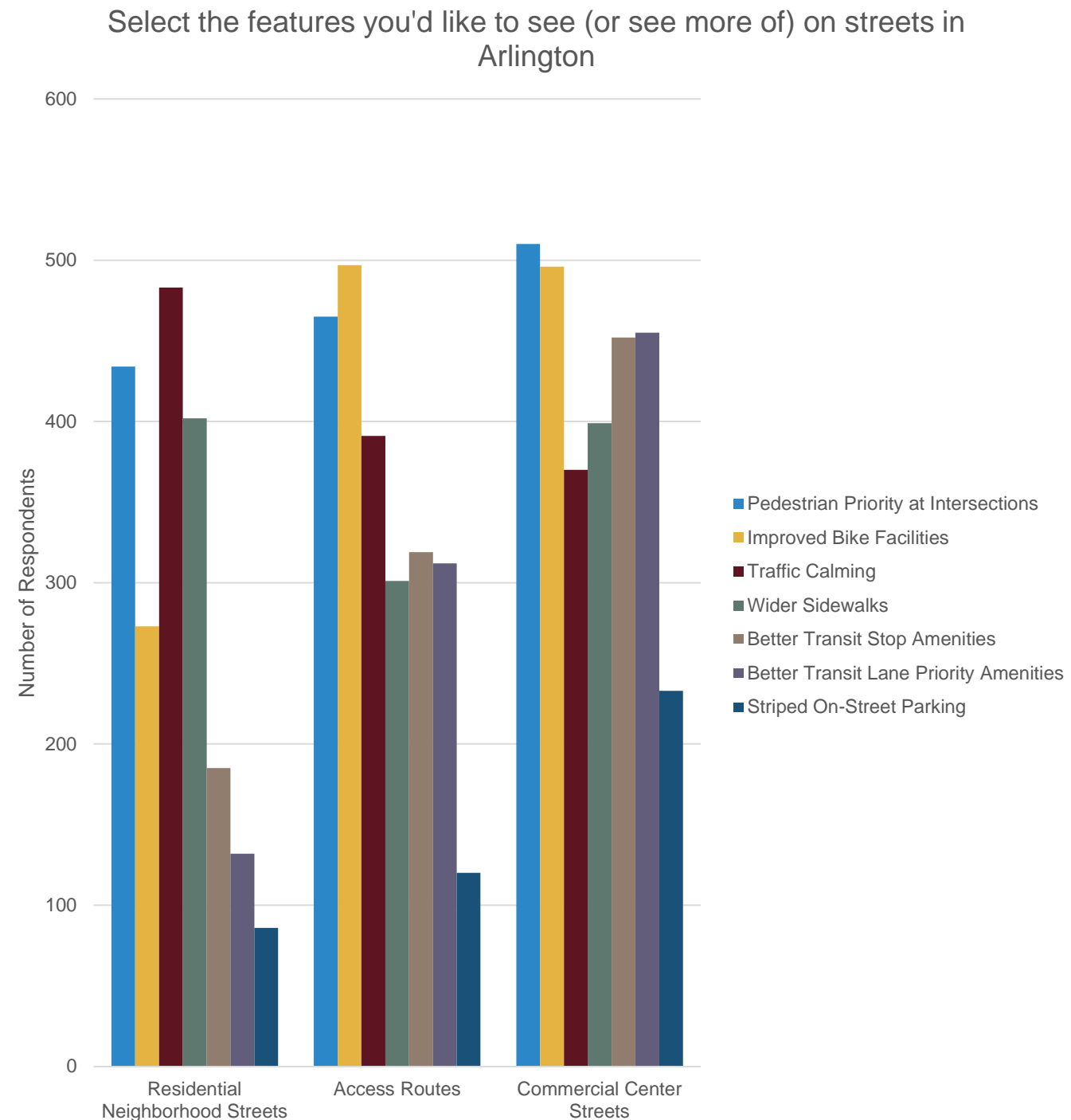
- Biking is the preferred mode of getting to work
- Overall, people would like to walk or bike more, but maintain driving trips for errands and socializing

If you were to change how you travel in the future, how would you most prefer to get around Arlington and the region?

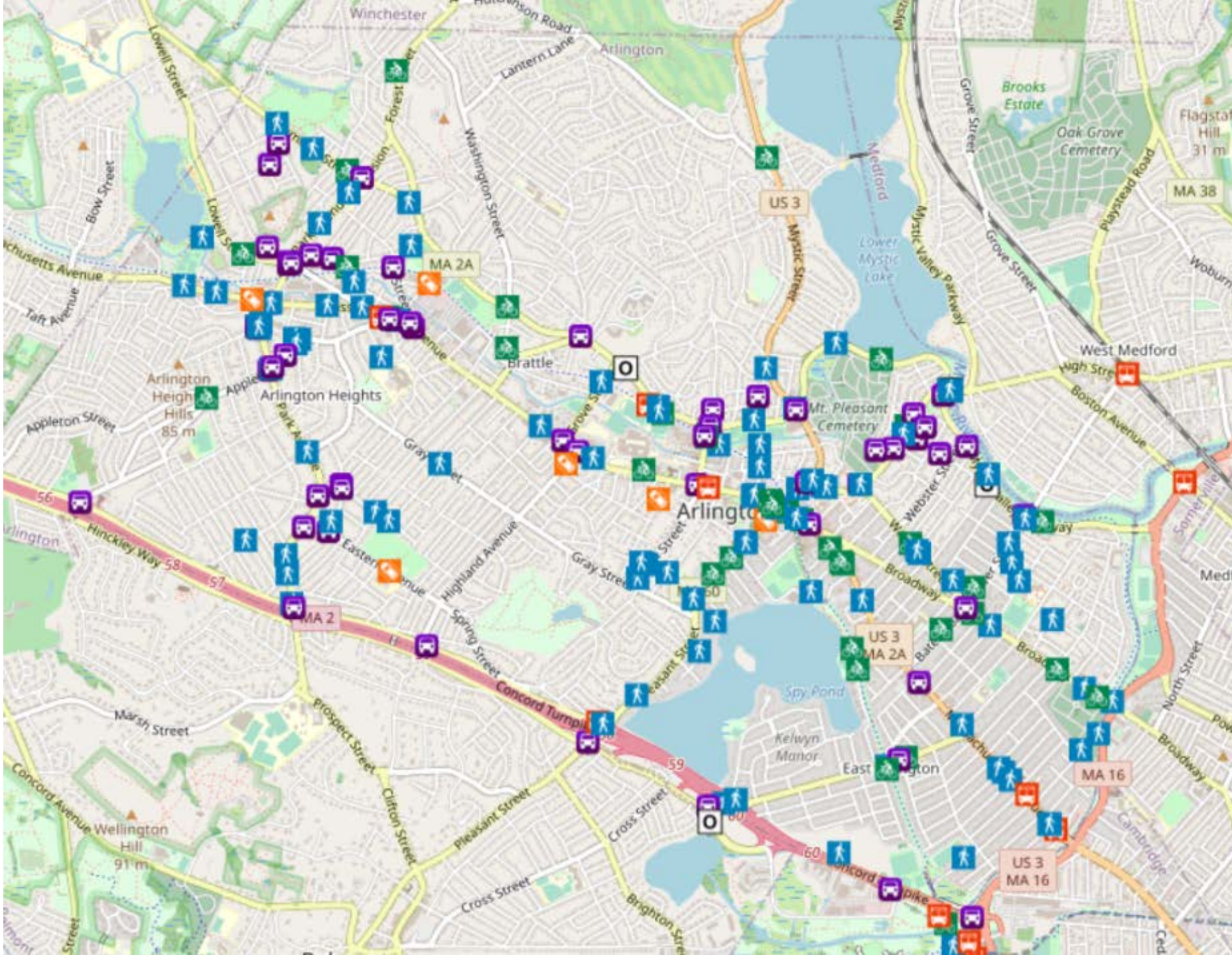


Respondents Would Like to See More Street Features

- On **residential streets**, respondents would like to see more traffic calming and pedestrian facilities
- On **access routes**, pedestrian priority and improved bike facilities are most-requested
- On commercial streets, transit amenities in addition to pedestrian and bike amenities are requested



Transportation Feedback Map



Question & Answer Period

Breakout Groups

Breakout Groups Questions

- The following five goals were viewed as top priorities in the survey:
 - Consider the need of diverse populations and people of all ages
 - Prioritizes a pedestrian and walk-friendly environment
 - Focus on improved transit connections and travel times
 - Prioritizes safety for all people no matter how they travel
 - Enhance access to and use of local transit services
- Do you agree with these top goals for the transportation system? Would you add or remove any of these goals and why?
- If you could wave a magic wand and change something about transportation in Arlington, what would you change?
- What is standing in the way of making changes about transportation and what are some ways to make them happen?
- What other transportation issues should we be studying or considering?



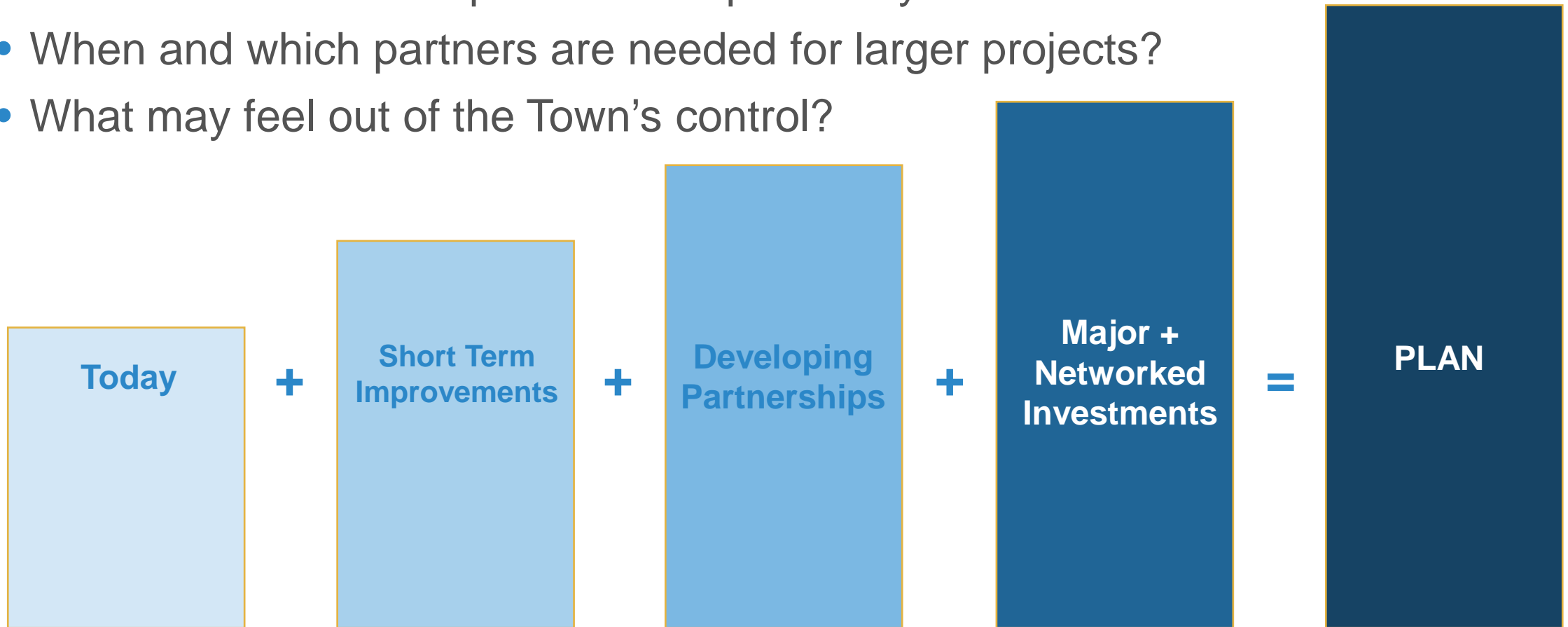
Question & Answer Period

What is coming up?

Next Steps

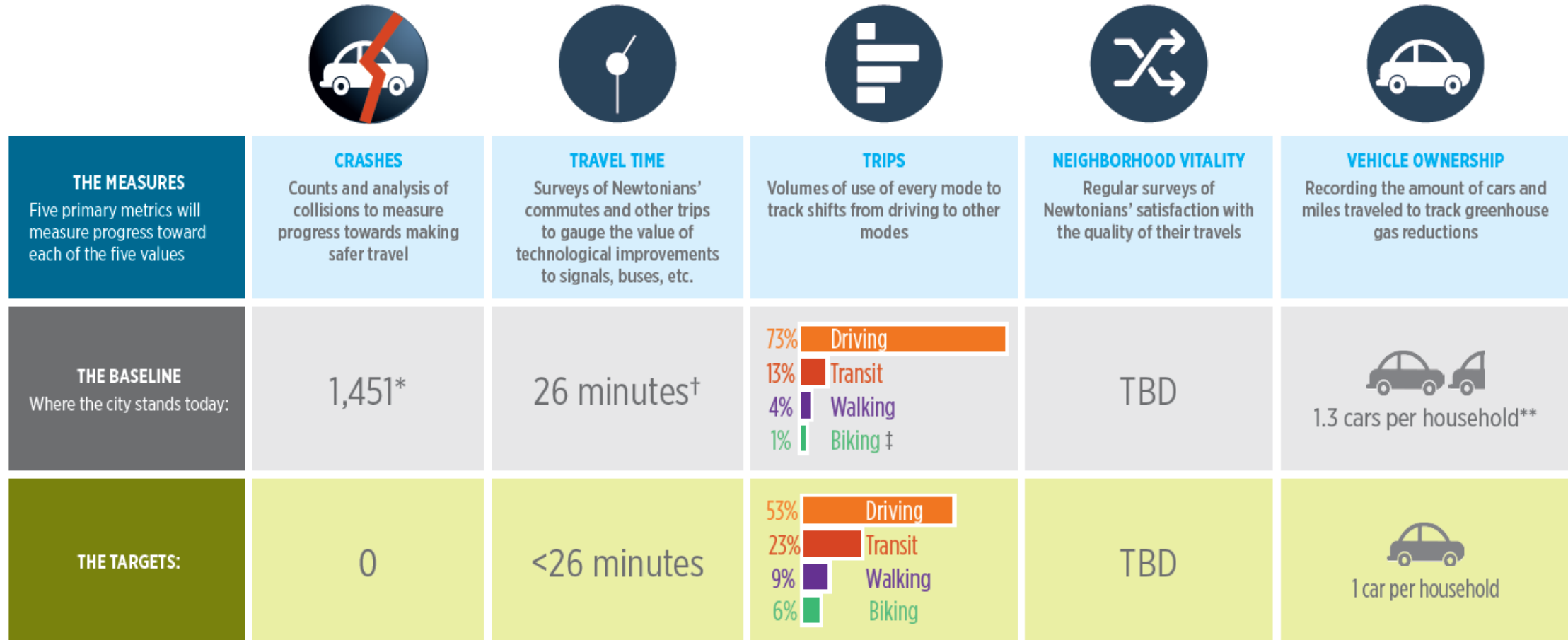
Draft Strategies: Understanding frameworks

- What the Town can implement independently.
- When and which partners are needed for larger projects?
- What may feel out of the Town's control?

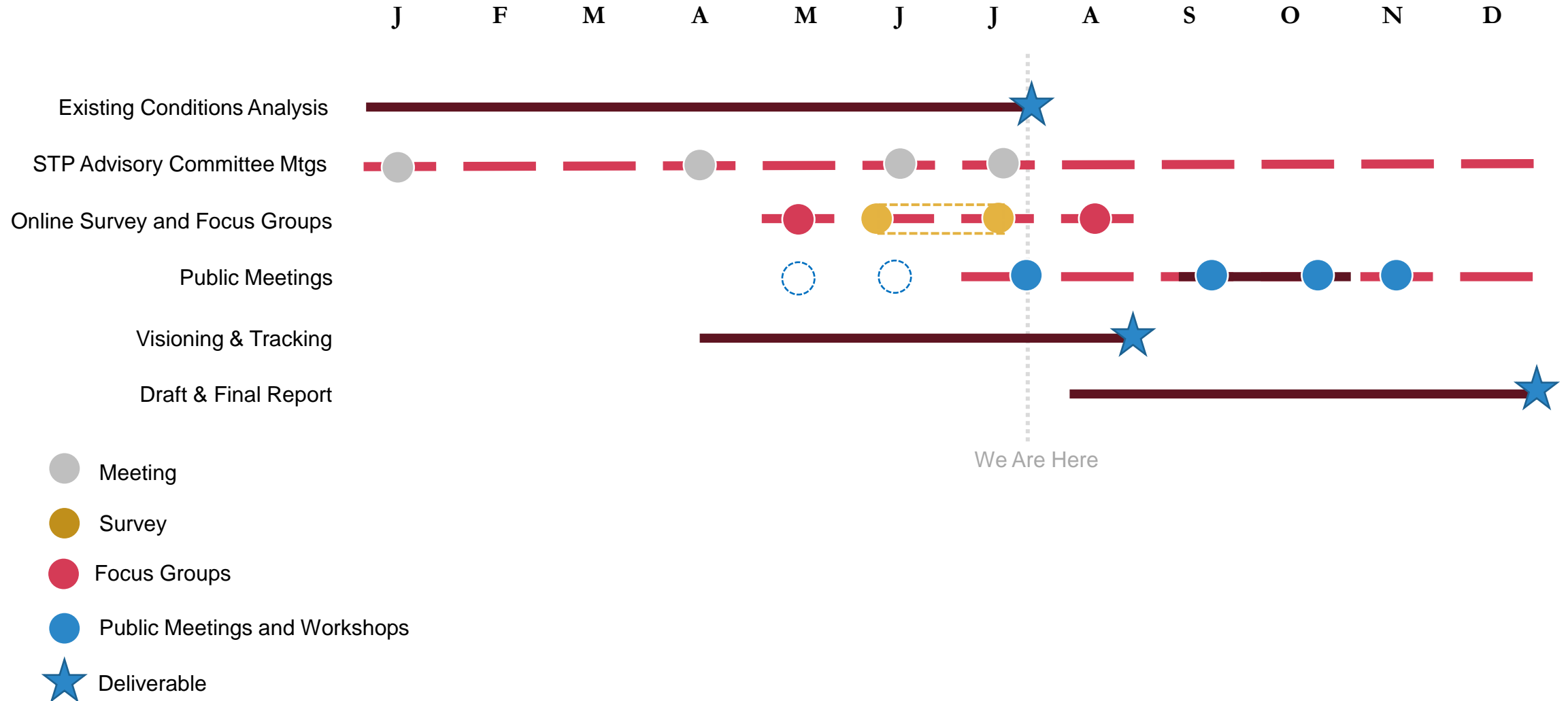


Final Action Plan: A road map that tracks progress

FIGURE 2 METRICS USED TO MEASURE PROGRESS



Timeline - 2020



Virtual Forum



CONNECT
Arlington
SUSTAINABLE
TRANSPORTATION PLAN



July 30, 2020



N NELSON
NYGAARD