

ARLINGTON RESERVOIR

Phase 2 Design & Implementation

PUBLIC MEETING #1

July 28, 2020



kzla

IMAGE COURTESY OF THE TOWN OF ARLINGTON

- **The Phase 2 project**
- **What we have done so far**
- **Community survey input**
- **Initial concepts for feedback**
 - Beach area
 - Main parking
- **Input from you**









THE PHASE 2 PROJECT

- Filtration building
- Concession/bath house
- Picnic pavilion
- Seating
- Trail amenities
- Invasive species
- Fencing
- Access to beach
- Accessibility/ inclusivity
- Playground
- Boating
- Fishing
- Volleyball
- Pickleball
- Signage
- New plantings
- Connections around the pond



PROJECT SCHEDULE

PUBLIC MEETING #1

July 28, 2020

Design & Community Engagement Process

Project Kick-off with Committee members

Site Walk with Recreation Director

Schematic Design document prep

Public Engagement (On-line survey)

Value Analysis/Construction Cost Estimates

June – August

June 2nd

June 11th

June 30th

June 26th – July 24th

July 15th

Design Development (6 weeks)

Playground working group meeting #1

Playground working group meeting #2

Public Meeting #1

Public Meeting #2

July 1st – August 14th

July 13th

July 27th

July 28th

August 11th

Permitting

Construction Documentation

Construction Phase

**Phase work to open beach for 2021 season

Project Completion

September – October

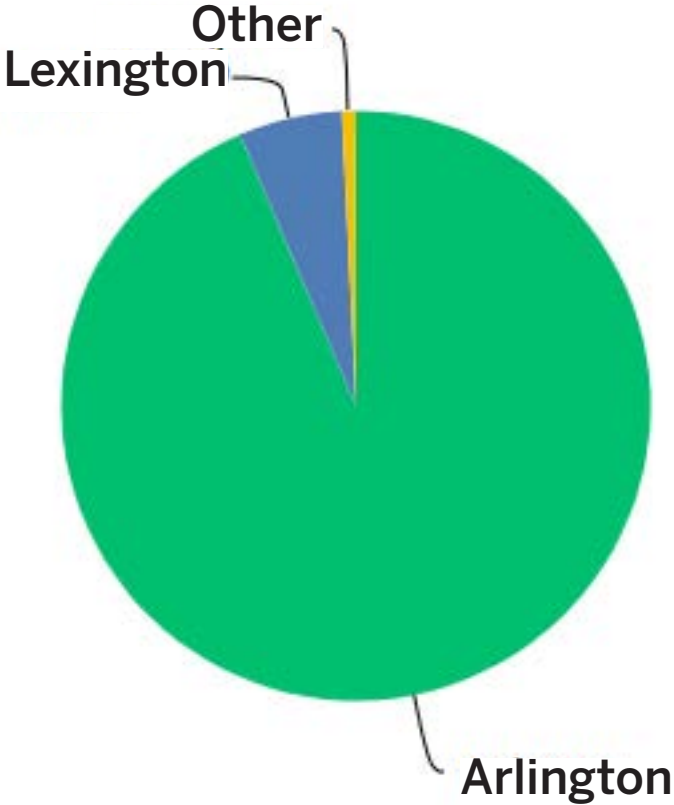
September – November

October 2020 – October 2021

November 1, 2021

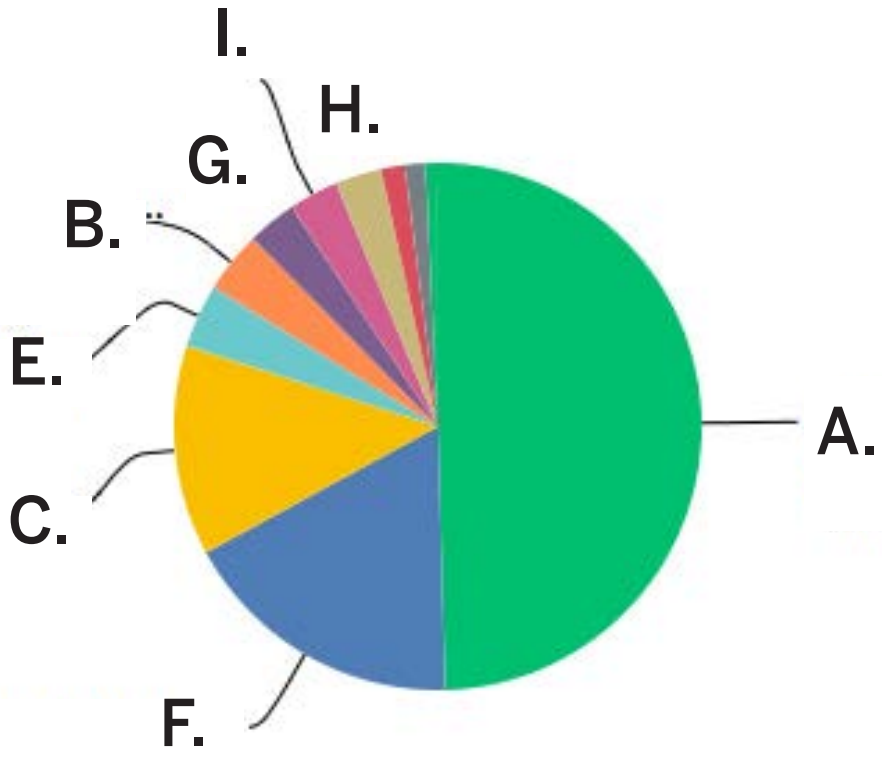
- **Open from 6/26-7/25**
- **27 questions**
 - Parking, access, playground, views, food, fishing & boating
- **1,131 responses!!!**

Do you live in Arlington or Lexington?



- Arlington 93.4%
- Lexington 5.7%
- Other 0.8%

Accessing the Res...

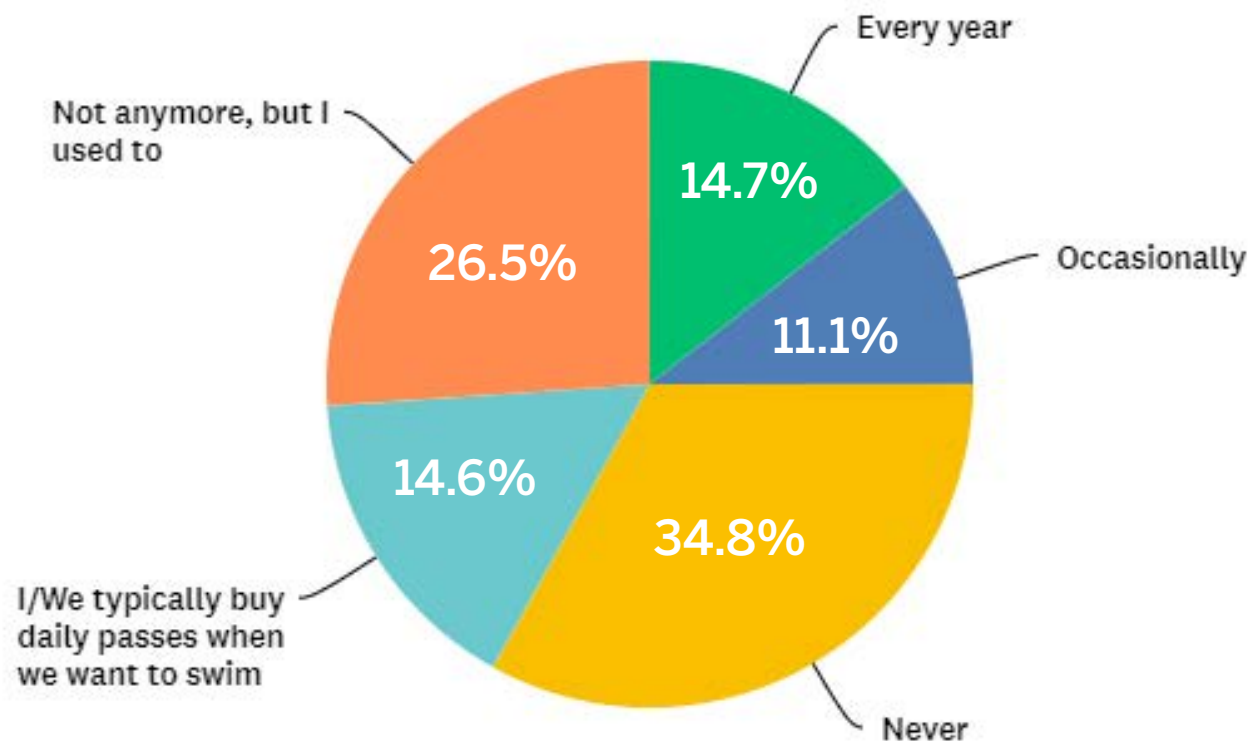


- A. Main parking lot on Lowell Street (via car) 49.9%
- F. Through Hurd Field and/or the bridge/spillway/habitat garden (on foot) 17.8%
- C. Crossing Lowell Street near the beach or main parking lot (on foot) 12.8%
- E. Through Rindge Park in Lexington (on foot) 3.8%
- B. Crossing Lowell Street north of the Res (on foot) 3.6%
- G. From paths to the north of the Res near Lex Farm (on foot) 3.3%
- I. From the Cataldo Reservation/Minuteman Bikeway (on foot) 3.0%
- H. From the Drake Village complex (on foot) 1.8%
- J. From Lexington near Rawson Avenue (on foot) 1.3%
- D. Small parking lot on Lowell Street north of the beach (via car) 0.7%
- Other 2.7%



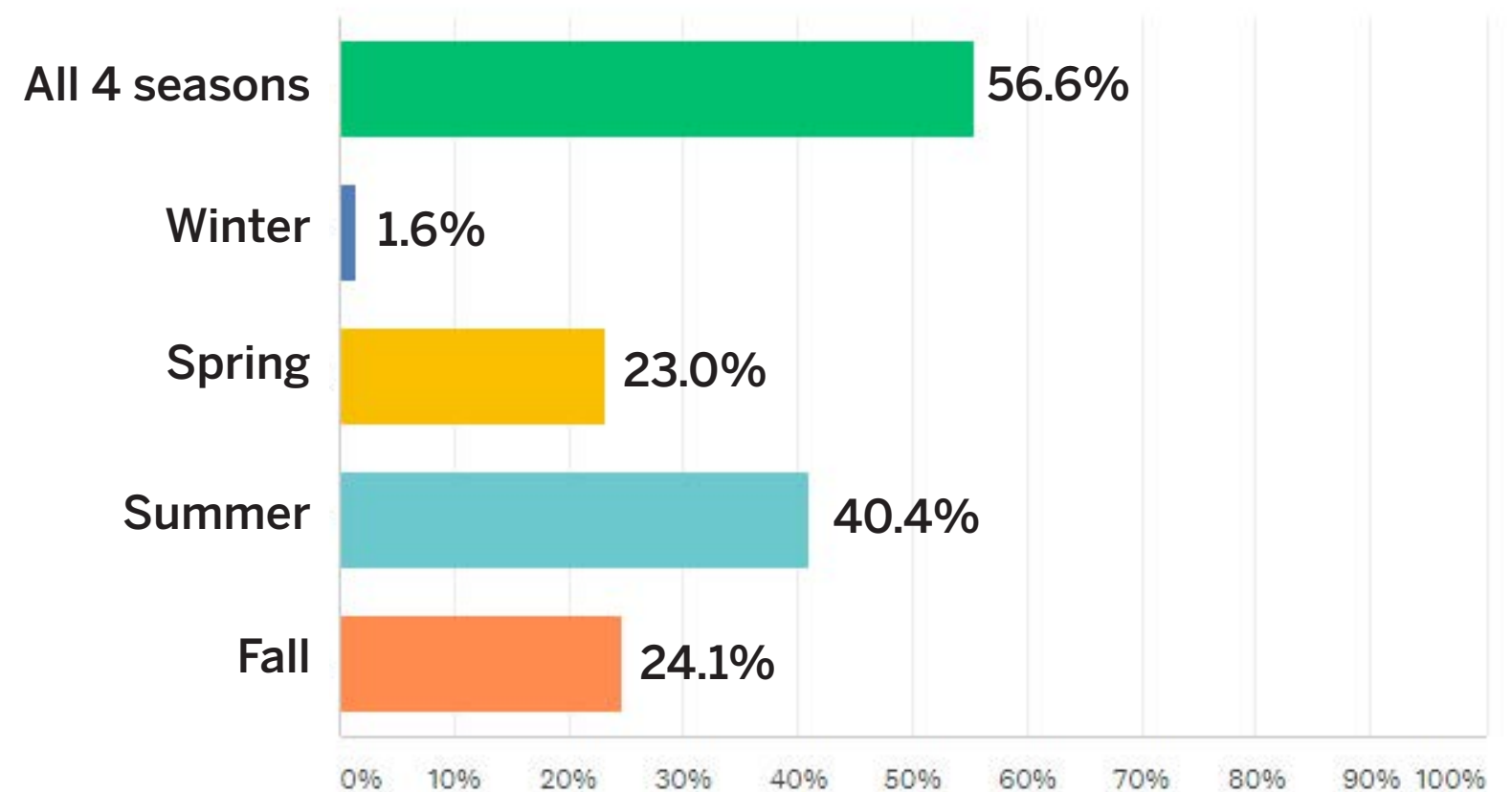
Visiting the Res...

Do you typically buy a seasonal pass for the beach?



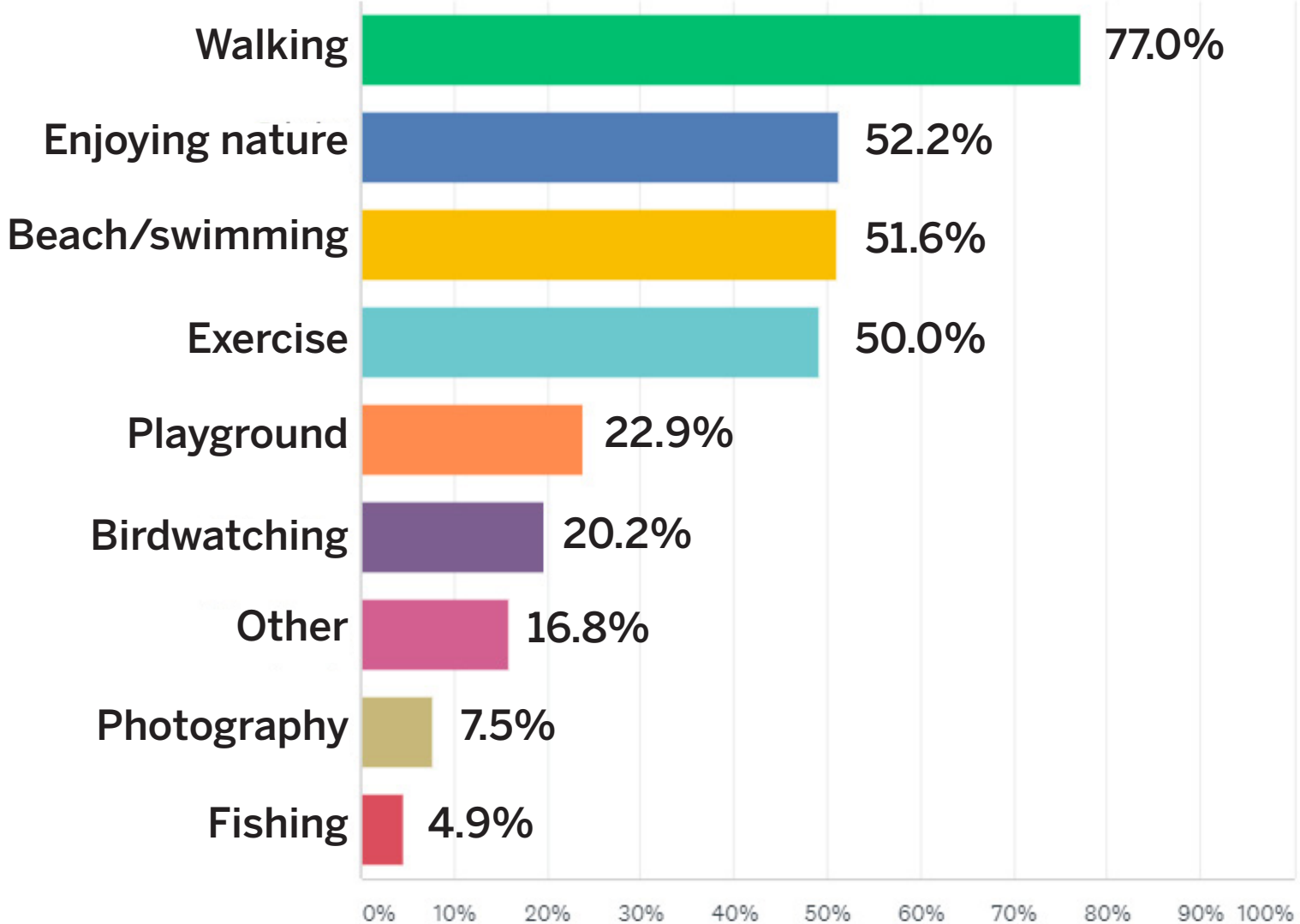
*When seasonal passes are bought, roughly 50% of the time they are family passes.

When do you typically visit the Res?



*26% visit mostly on weekends; Nearly 50% say they visit throughout the week

Why do you come to the Res?

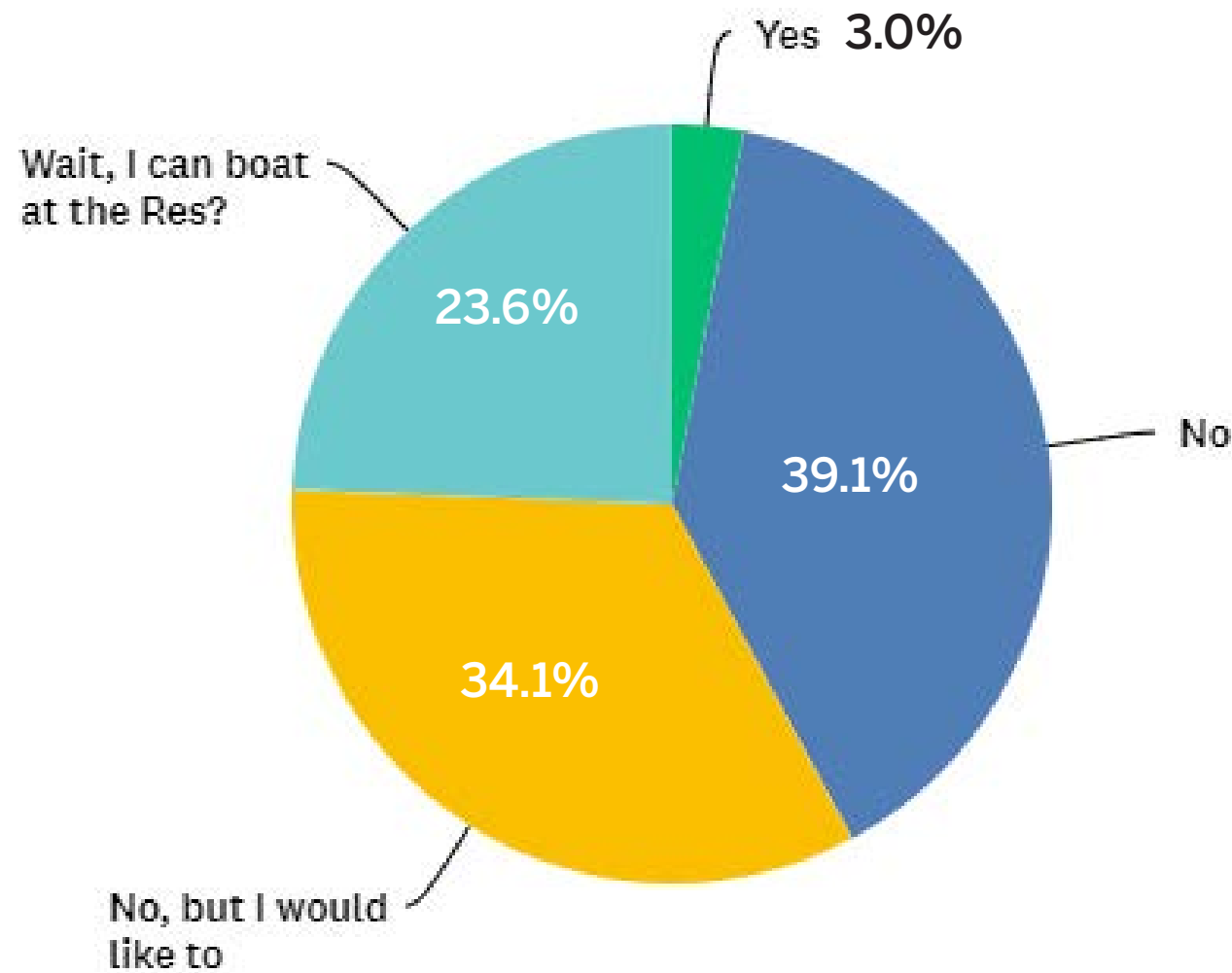


Other responses (write ins):

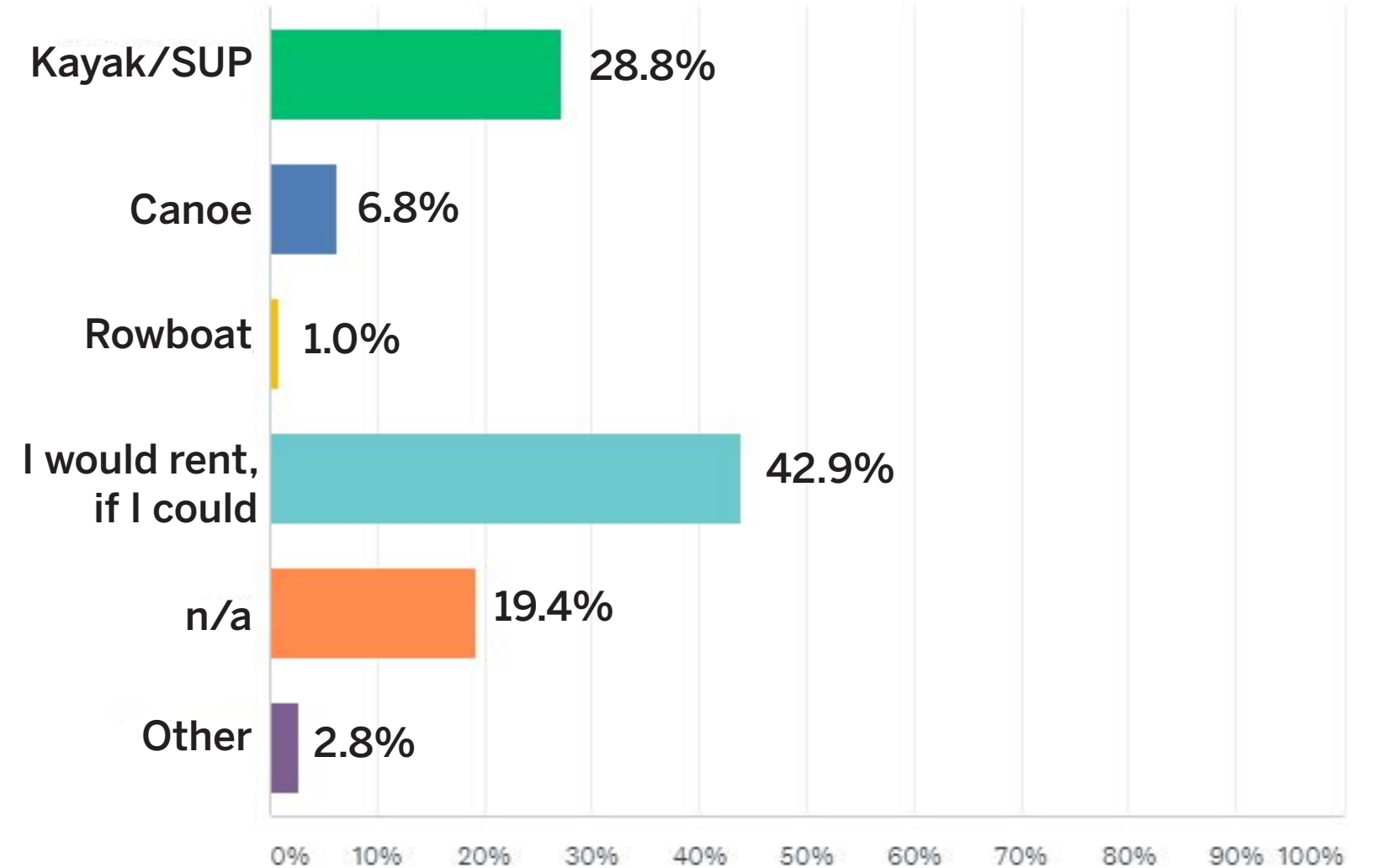
- Dog walking 81
- Jogging/running 10
- Bicycling 7
- Watching cross-country races 6

Boating at the Res...

Do you boat at the Res?



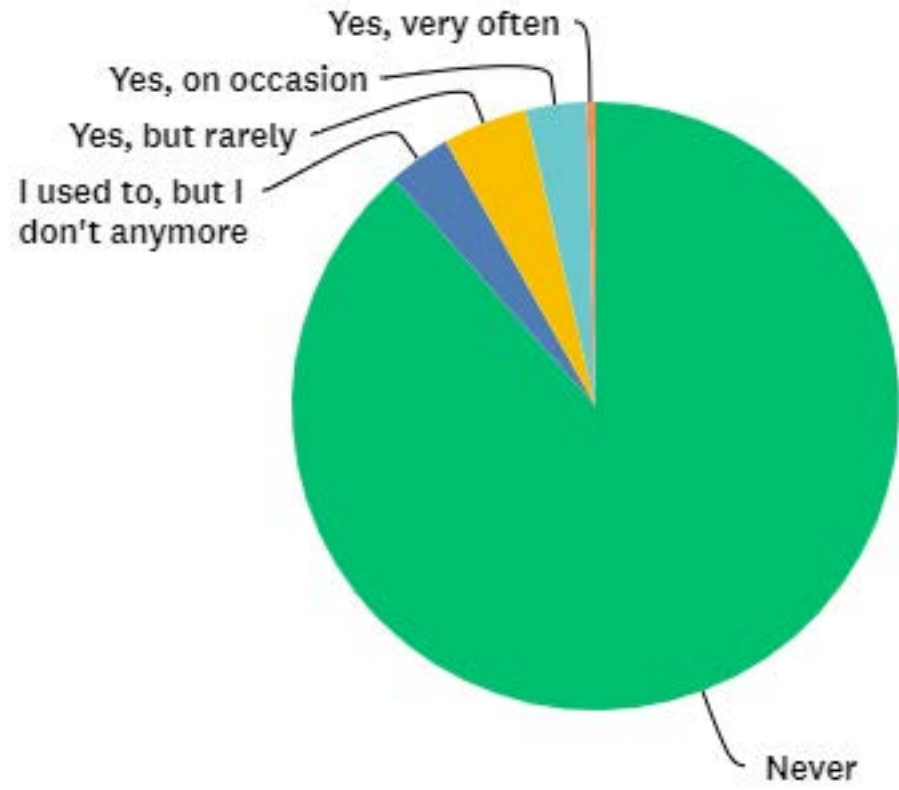
What kind of boat do you (or would you) bring to the Res?



*Most popular write-in response was small sailboats

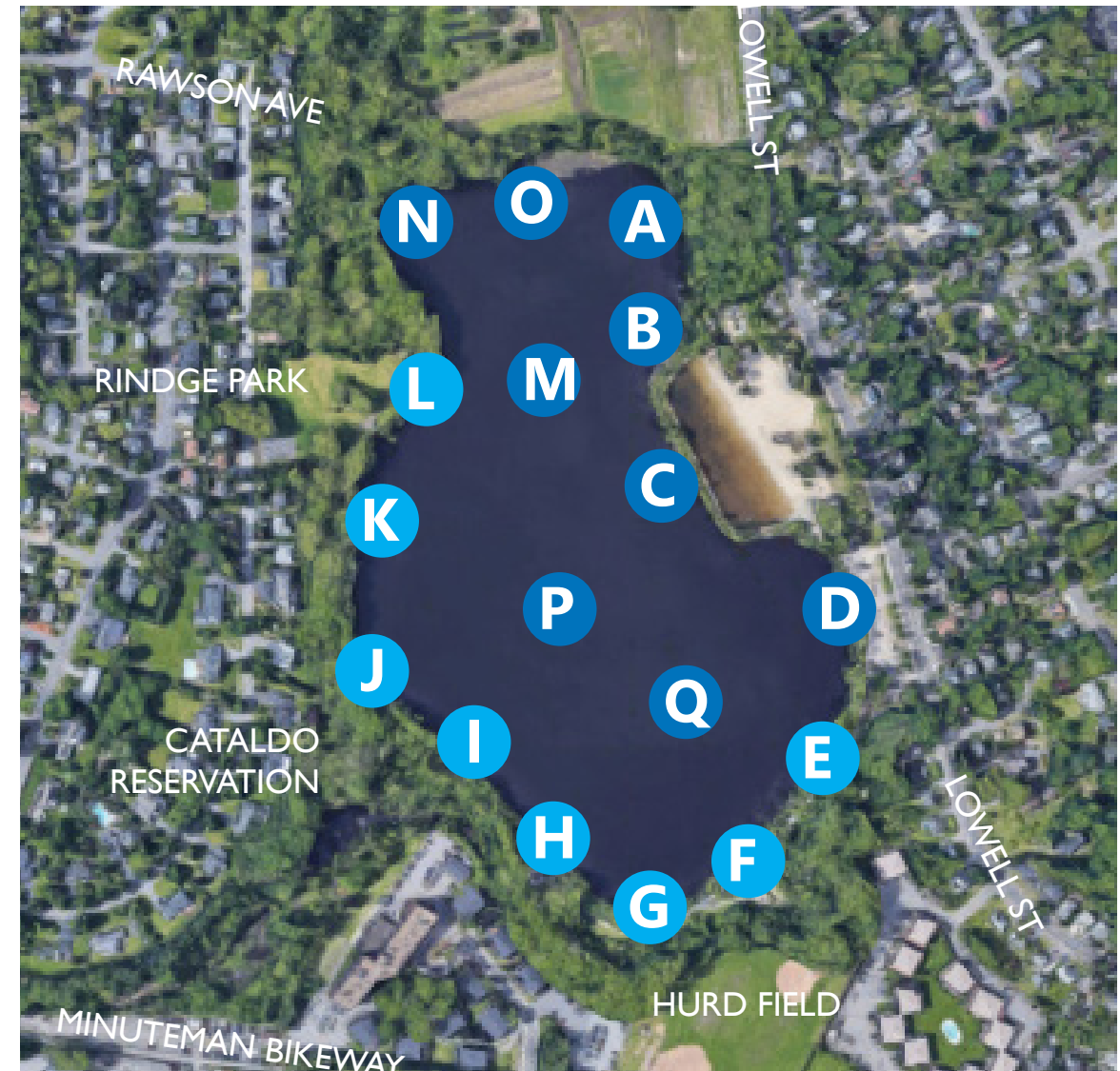
Fishing at the Res...

Do you fish at the Res?



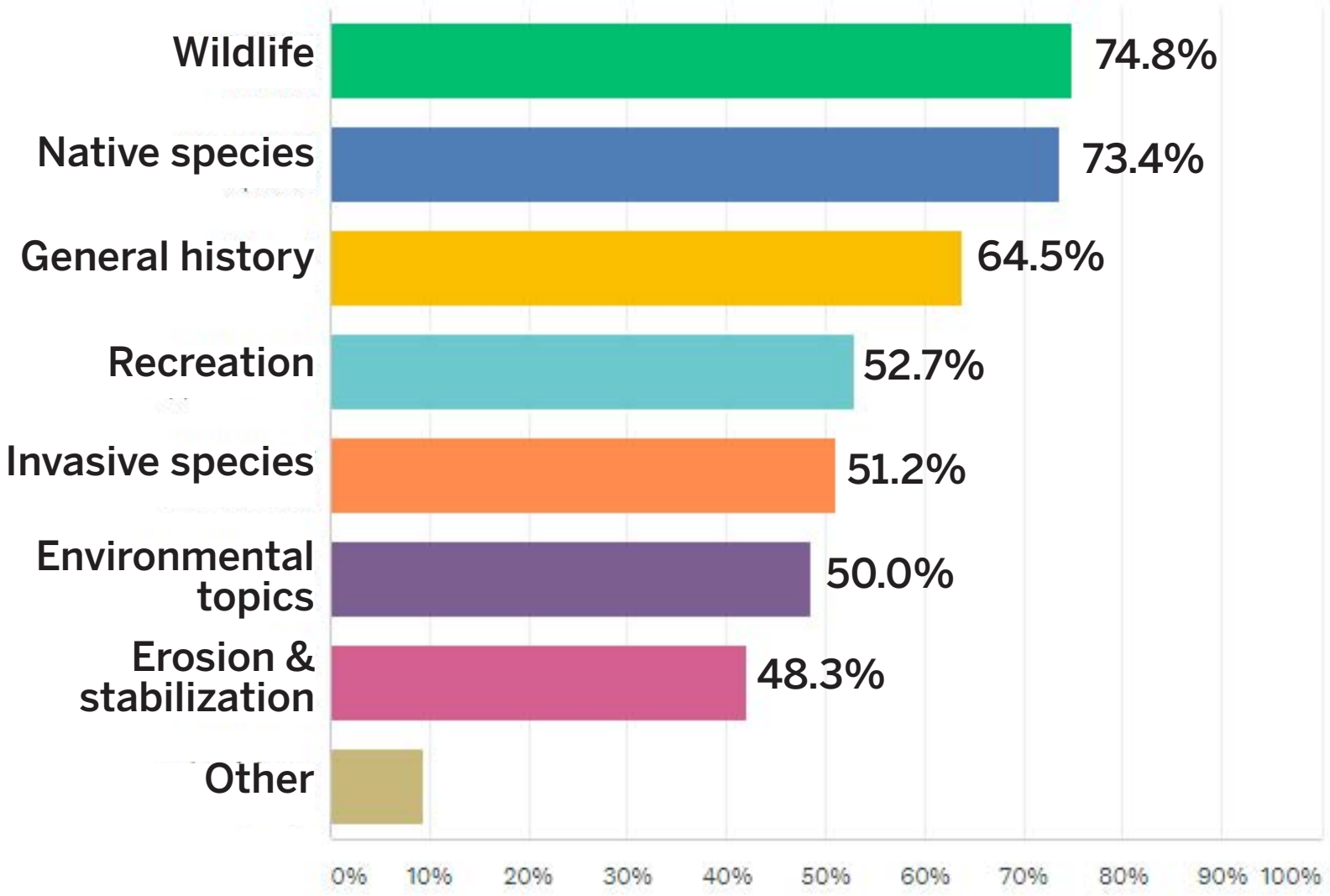
- Never 87.9%
- Yes, but rarely 4.7%
- I used to, but I don't anymore 3.8%
- Yes, on occasion 3.2%
- Yes, very often 0.4%

Where are the best spots?



- H 22.2%
- F 19.2%
- E/G/I 17.2% each
- K 14.1%
- J 11.1%
- L 10.1%

Interpretive signage



Other responses (write ins):

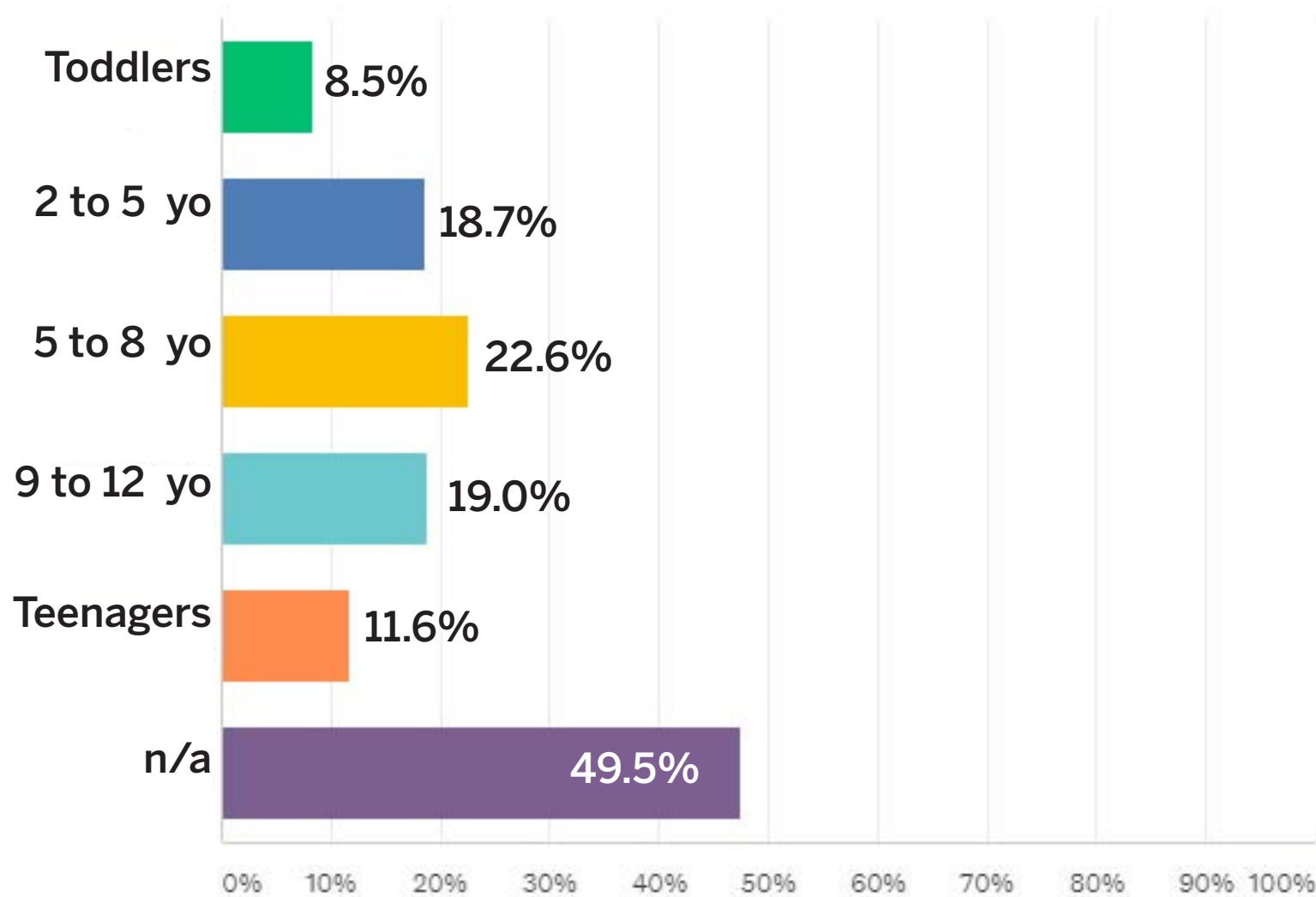
- Dog rules 15
- Less signage, more nature 9
- No signage, please 7
- Mile markers 5
- Wayfinding to destinations 5

Views around the Res...

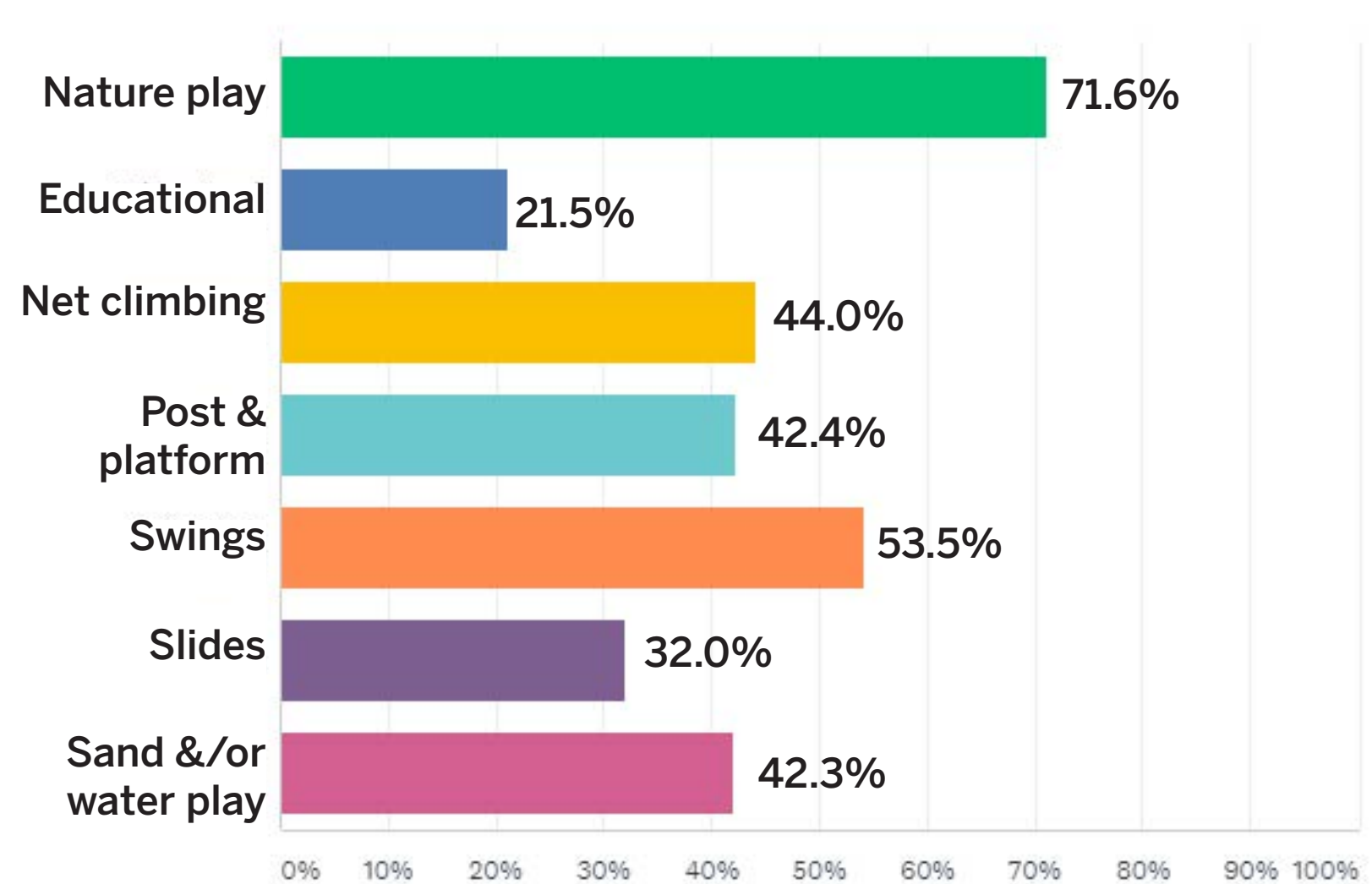


Playing at the Res...

What age are the children that you bring to the playground?



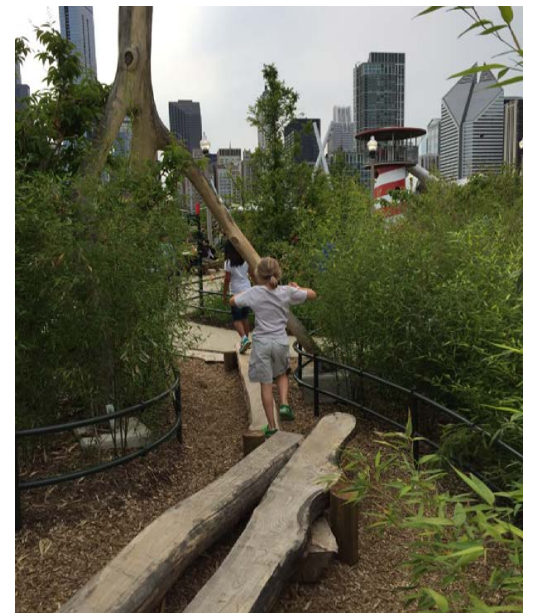
What type of playground would you like to see?



Playing at the Res...



Comments on playground equipment?

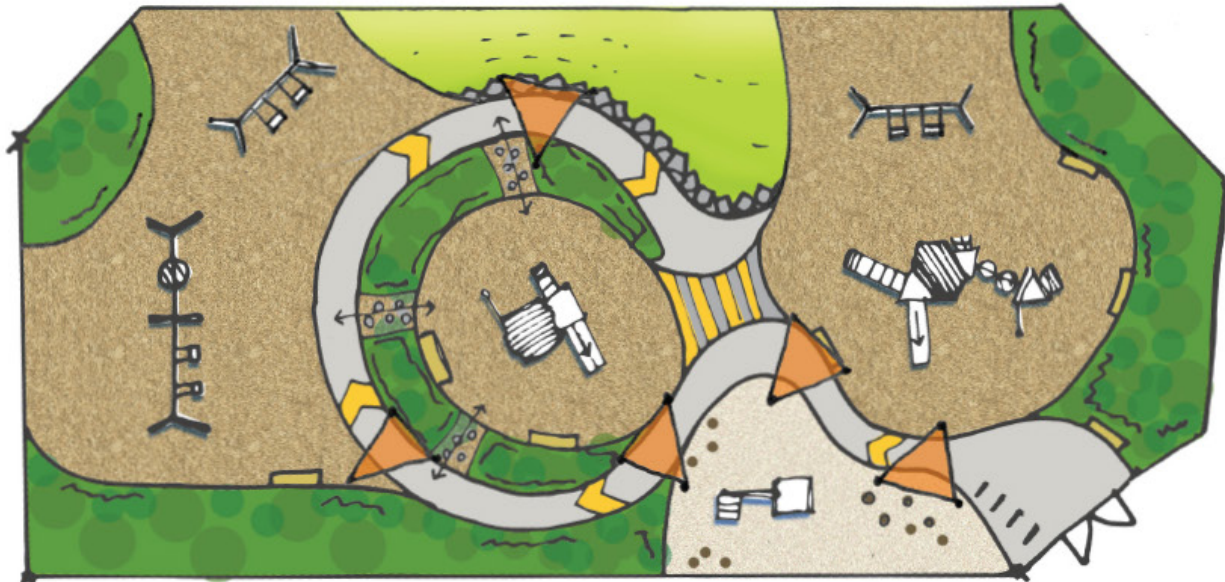


Arlington Town Res
Arlington, MA

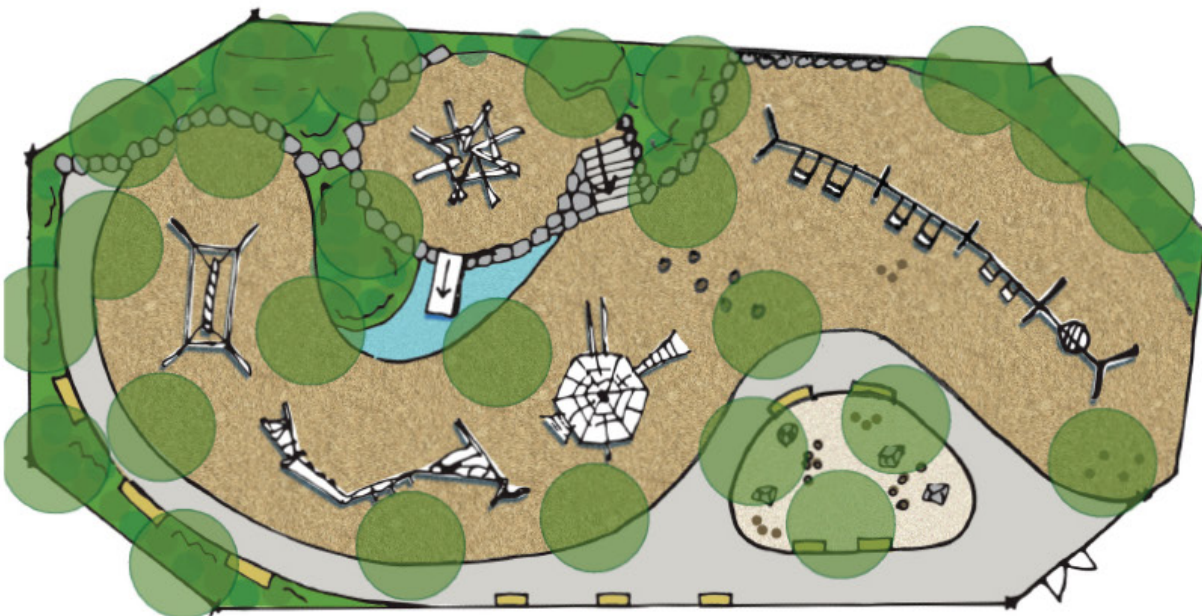
Playground Improvements

kzla

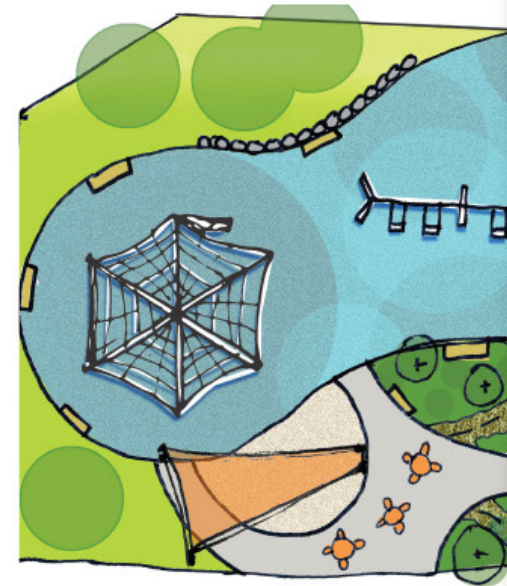
Comments on playground themes?



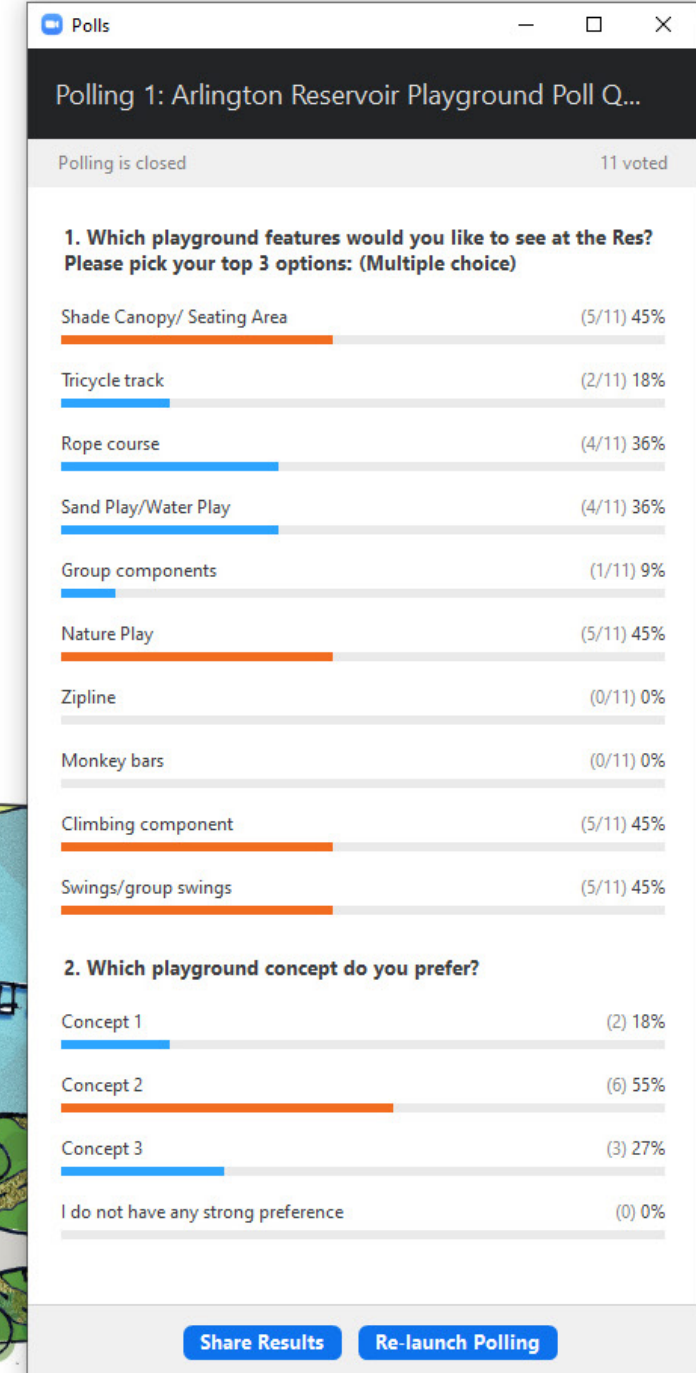
Concept 1



Concept 2



Concept 3



TRAIL MATERIALS



Stonedust
Approximately
\$6/sf

- Needs re-grading, weeding and topdressing.
- Can be soft in spring thaw.
- Avoid installation on long pitches of 6% or greater
- Accessibility: full with maintenance



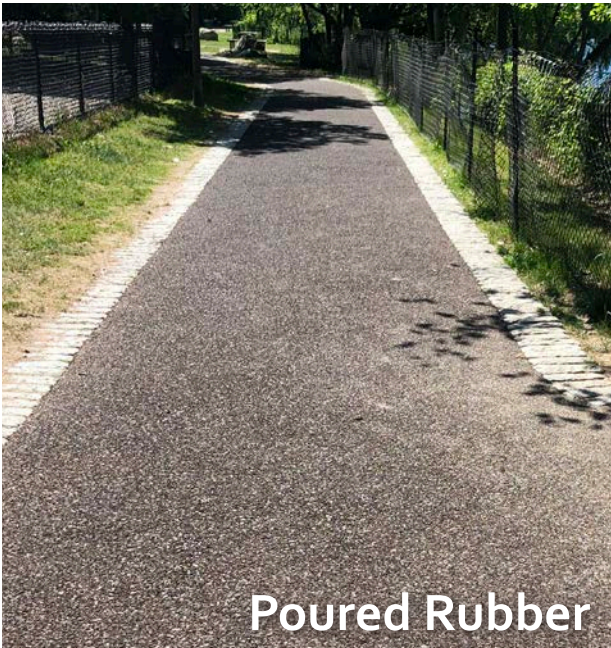
Stabilized Stonedust
Approximately
\$8/sf

- Needs re-grading, weeding and topdressing.
- Can be soft in spring thaw.
- Avoid installation on long pitches of 6% or greater
- Accessibility: full with maintenance



Rubber & Aggregate
Approximately
\$20/sf

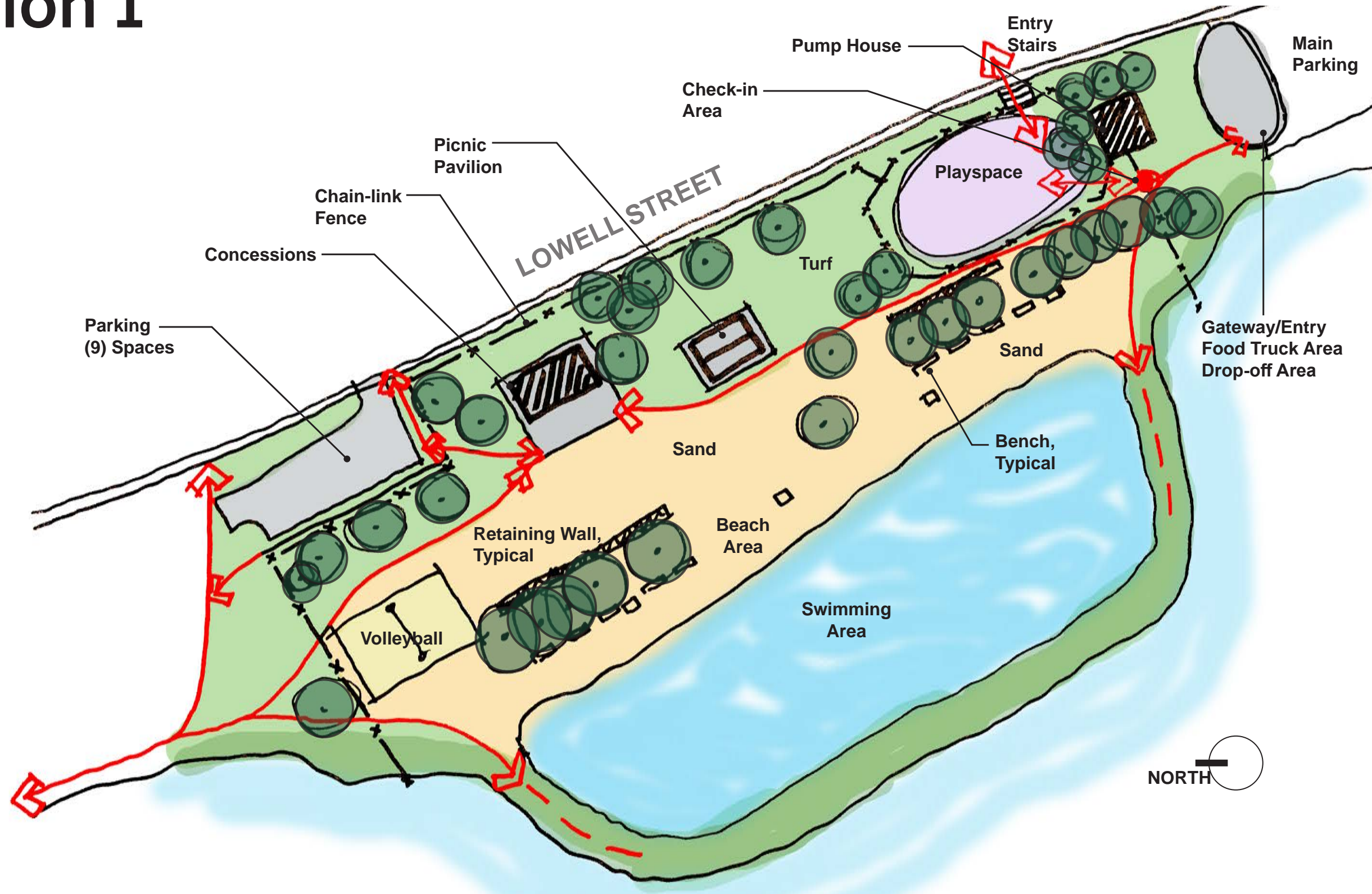
- Slip resistant
- Resistant to freeze-thaw
- Accessibility: full
- Permeable system



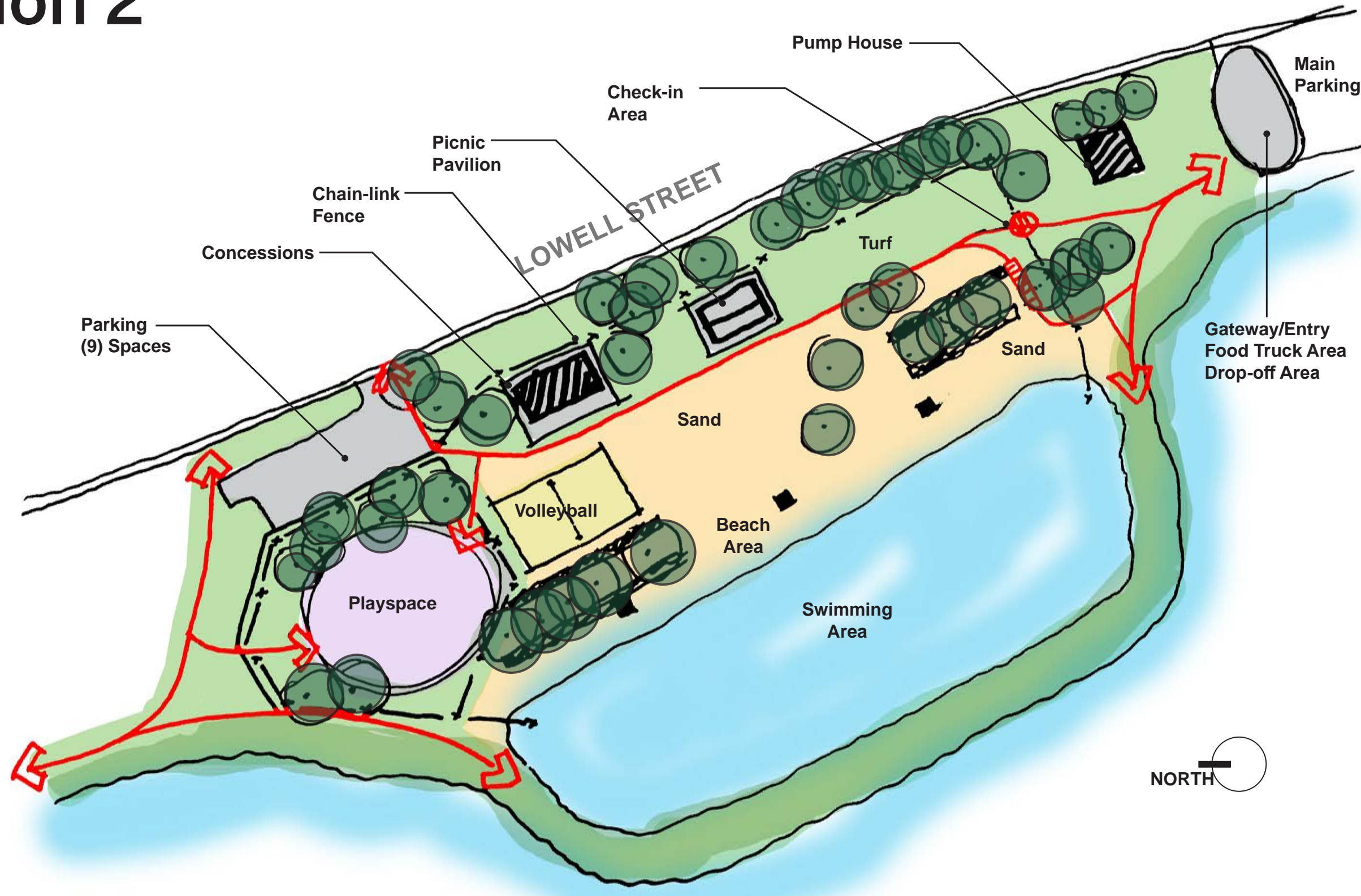
Poured Rubber
Approximately
\$25/sf

- Slip resistant
- Resistant to freeze-thaw
- Accessibility: full
- Permeable system

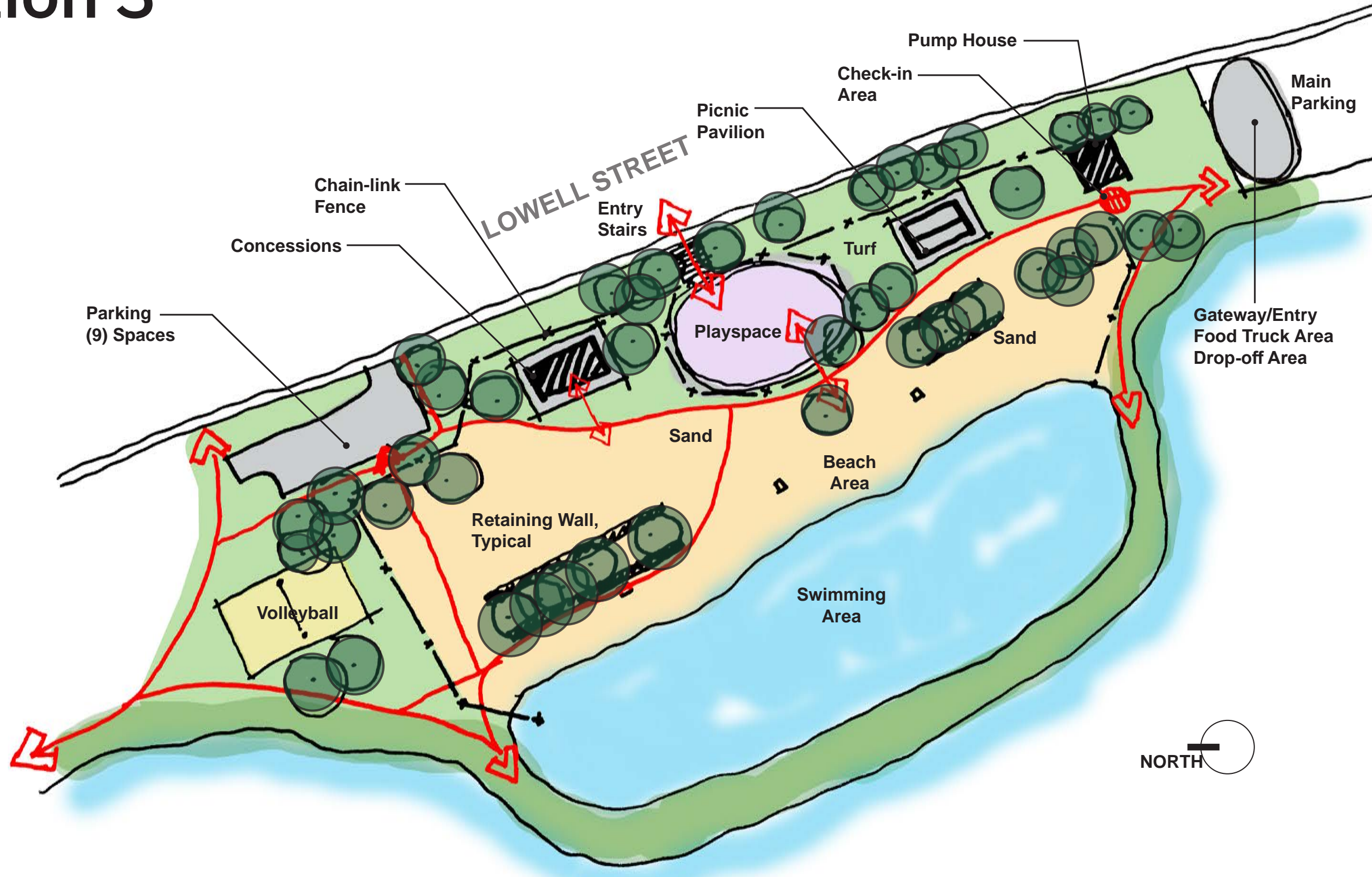
Option 1



Option 2

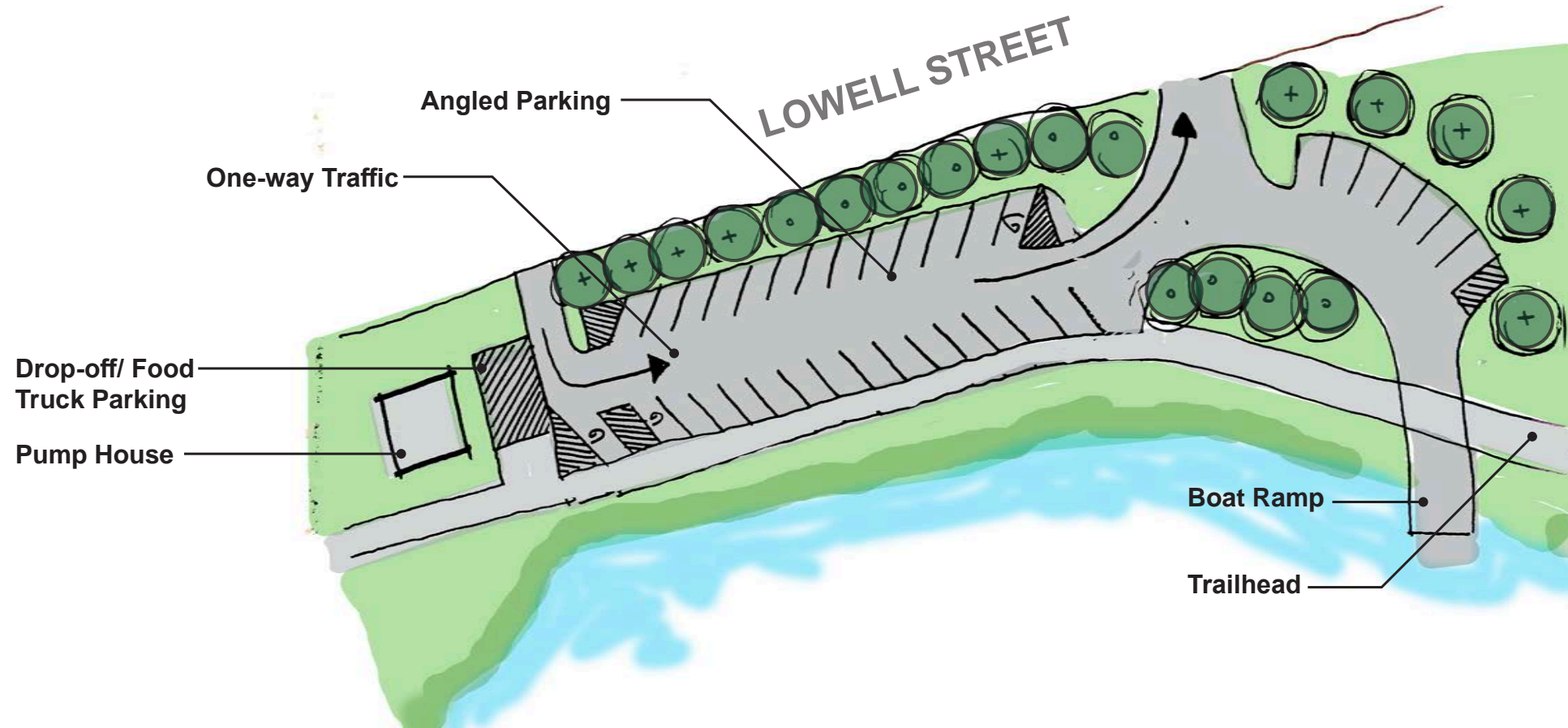


Option 3



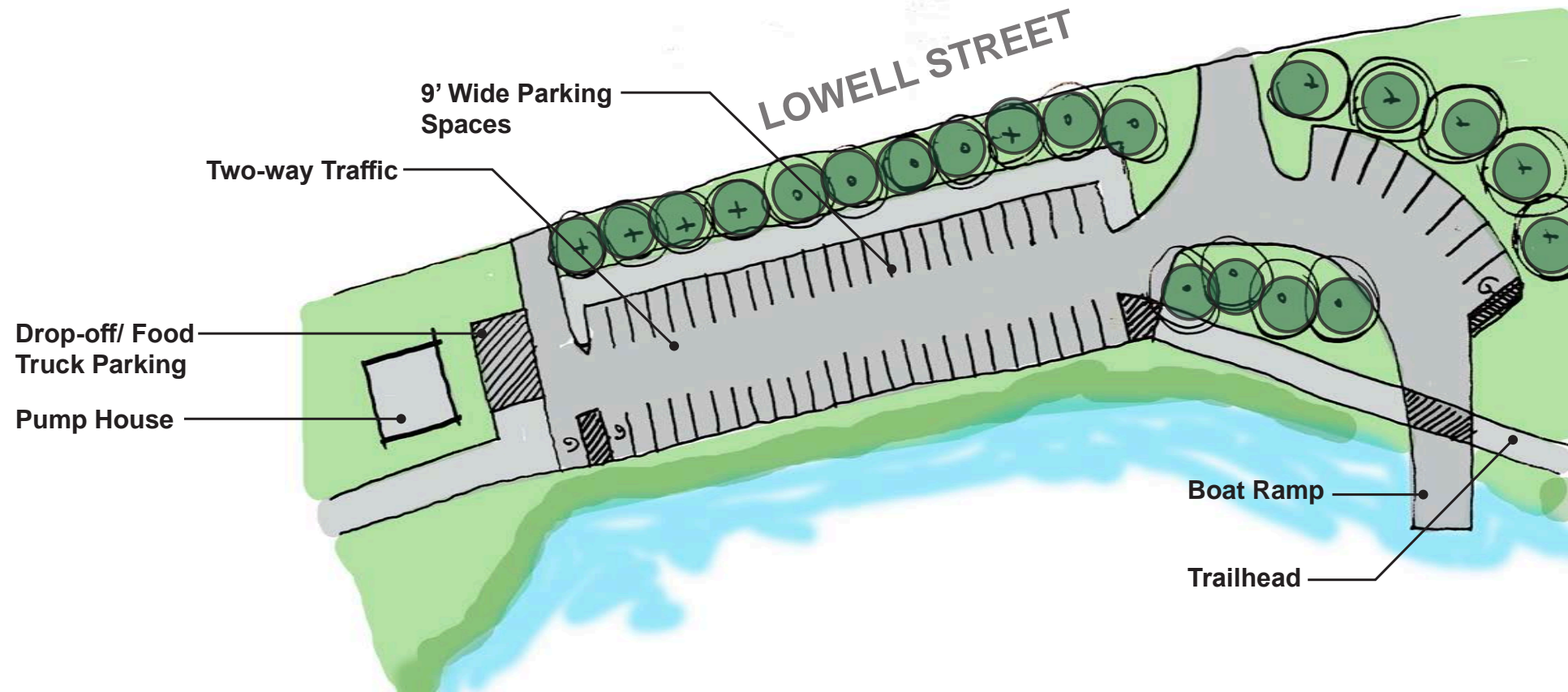
Option 1

36 Total Spaces



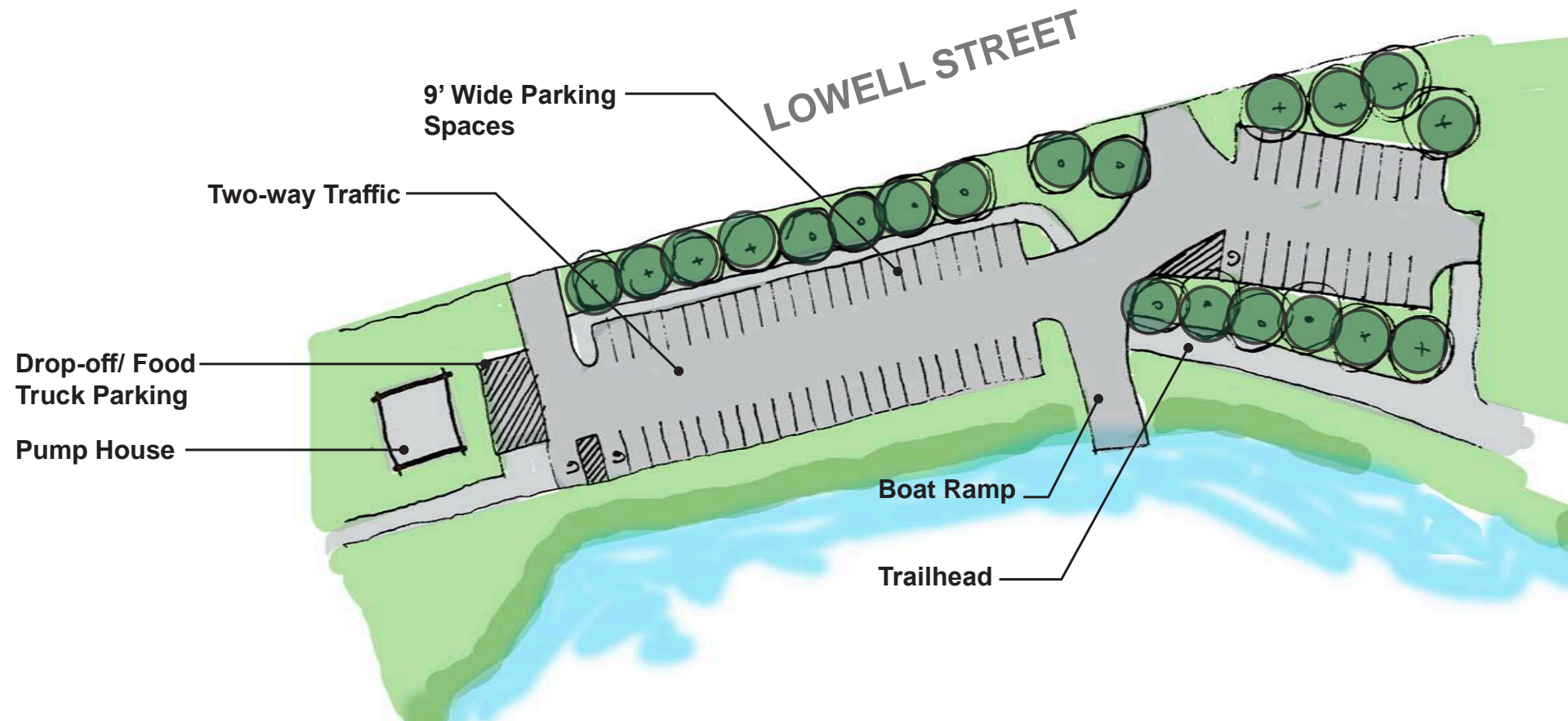
Option 2

59 Total Spaces



Option 3

67 Total Spaces

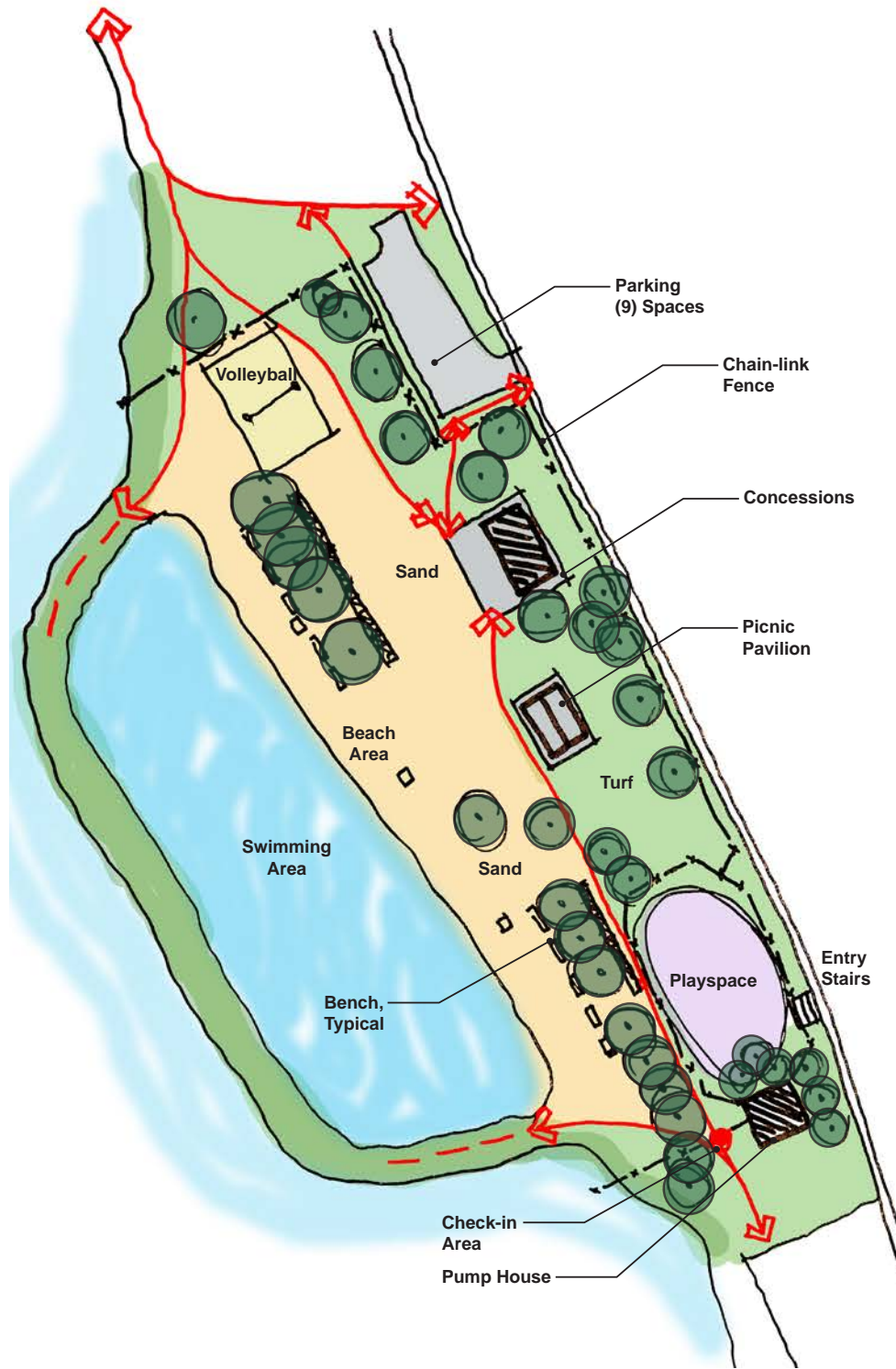


BEACH AREA CONCEPTS

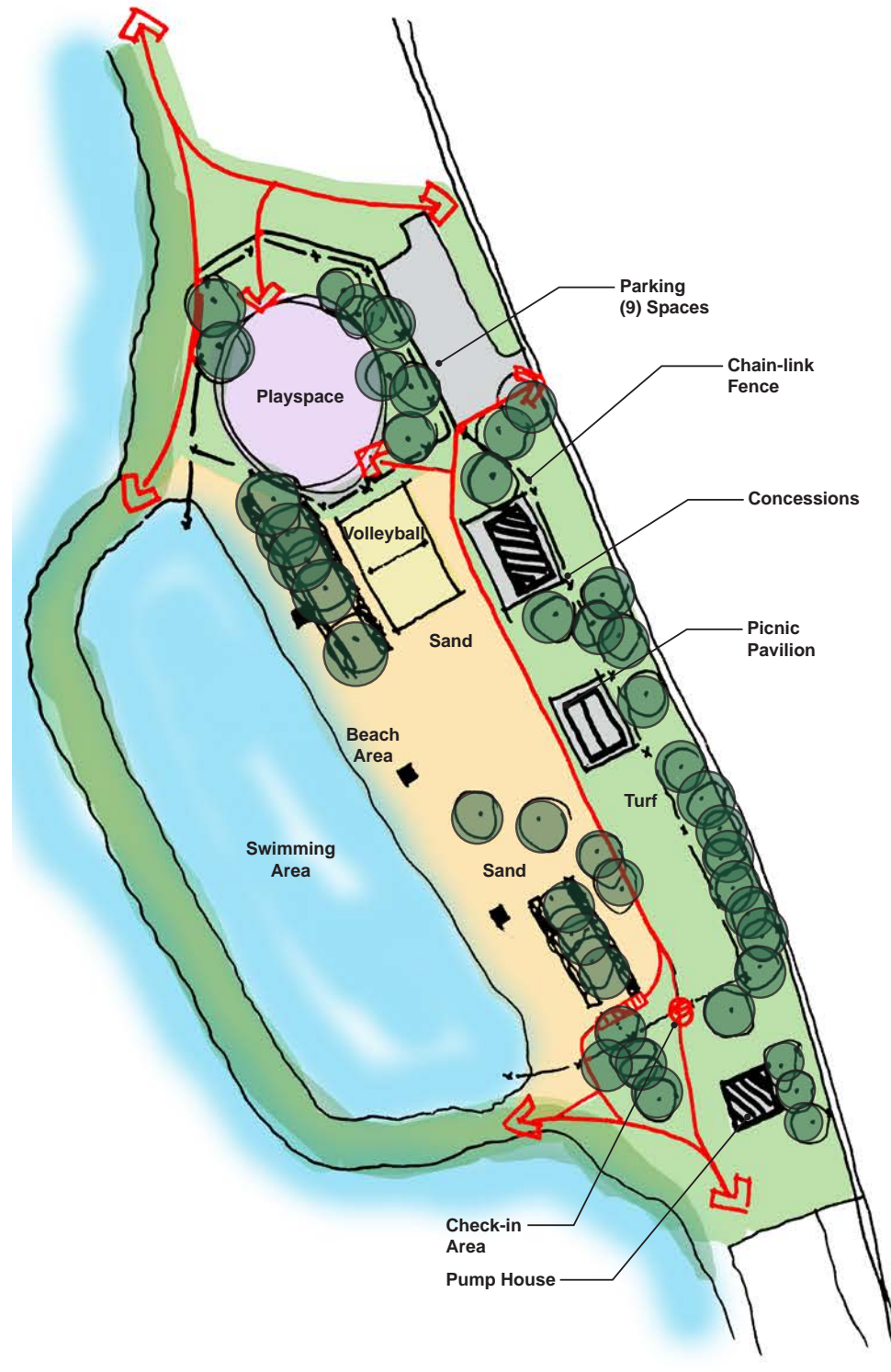
PUBLIC MEETING #1

July 28, 2020

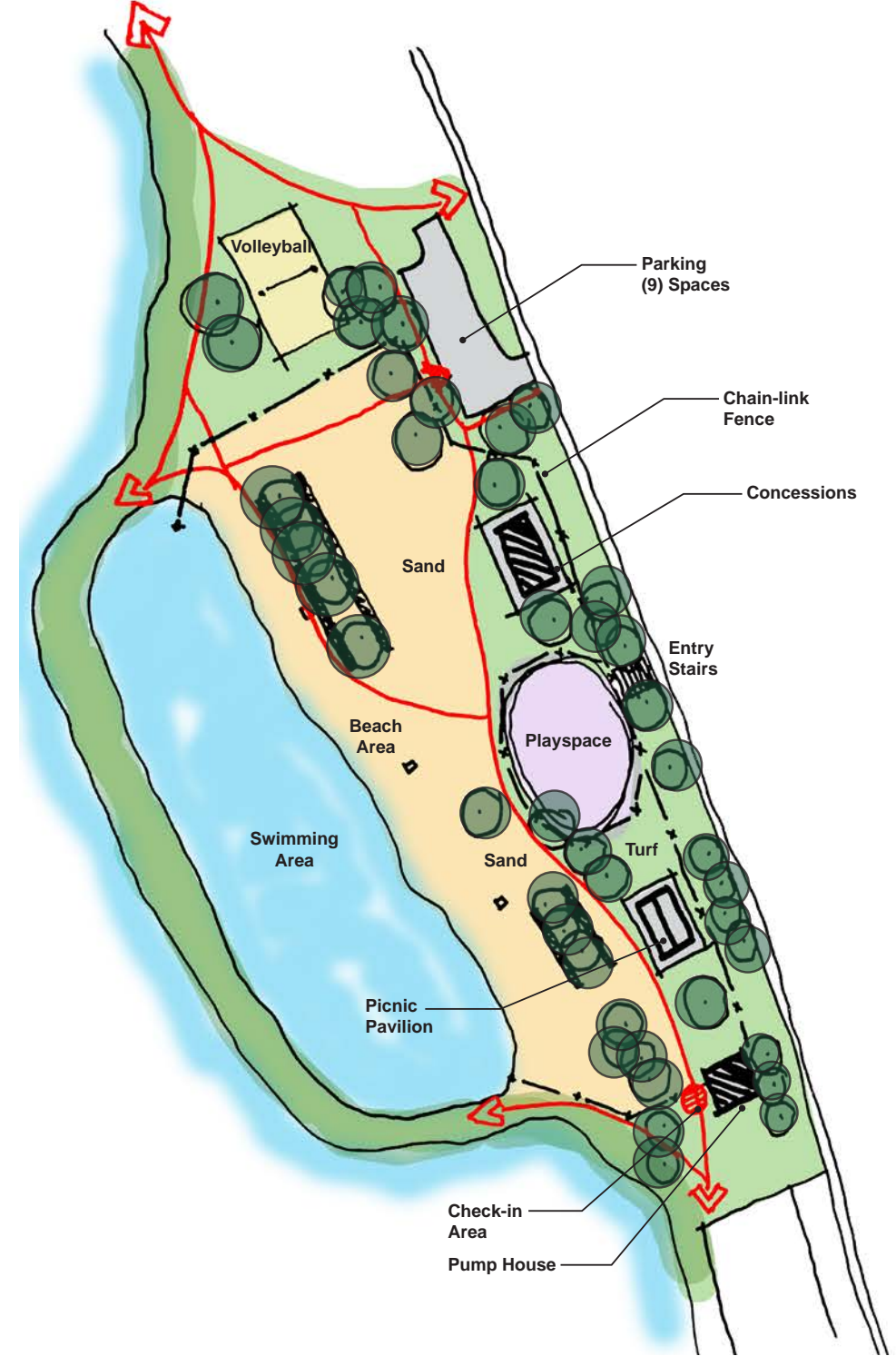
Option 1



Option 2



Option 3



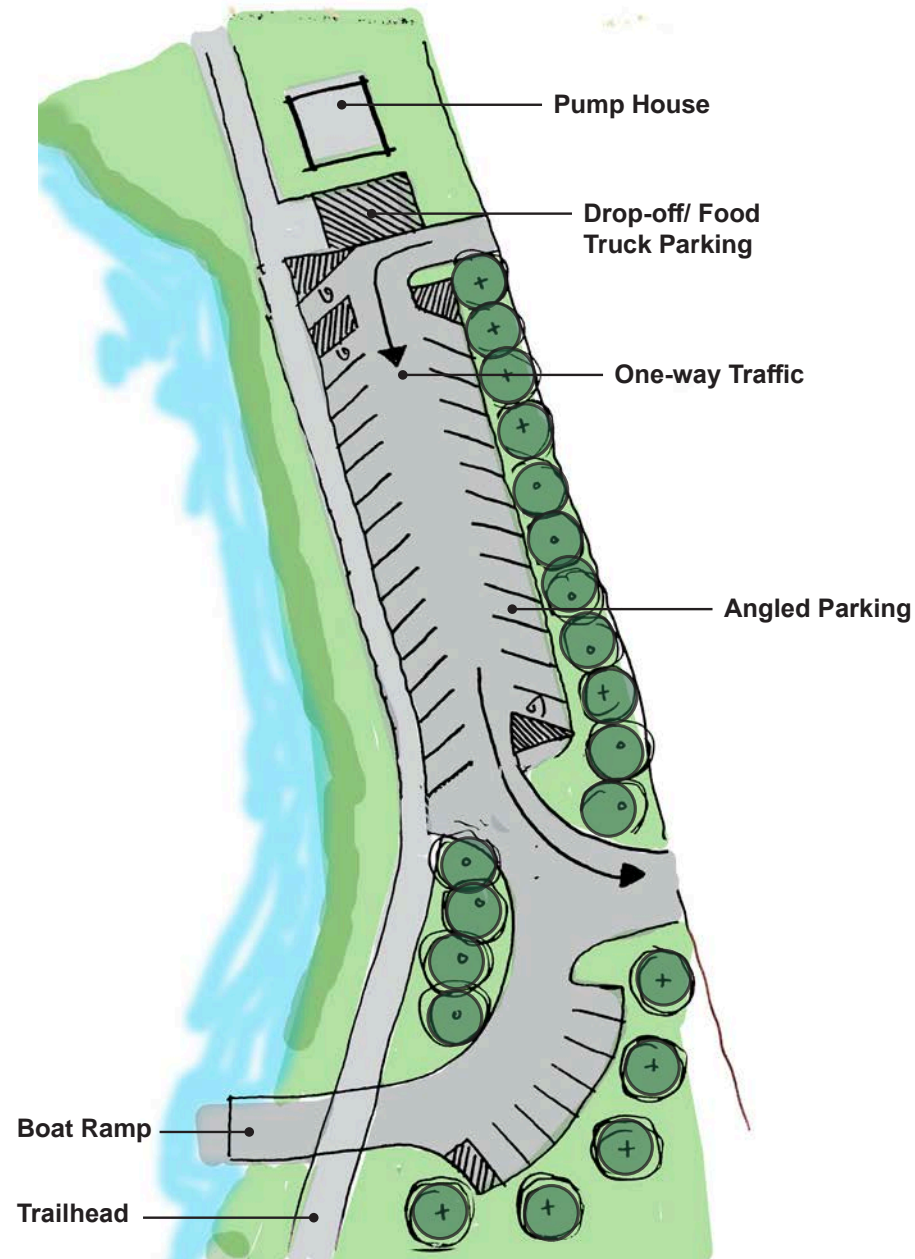
MAIN PARKING CONCEPTS

PUBLIC MEETING #1

July 28, 2020

Option 1

36 Total Spaces



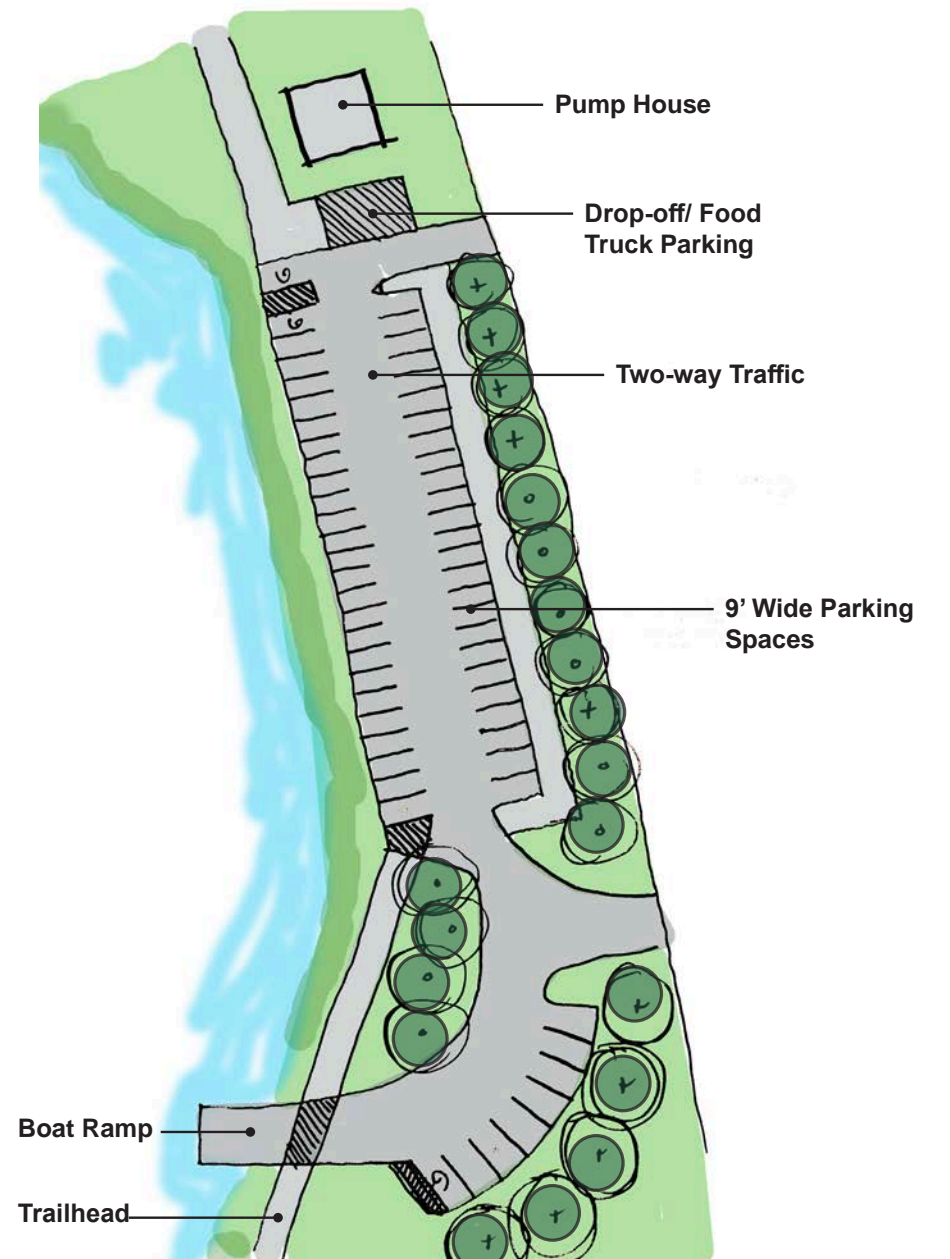
Option 2

67 Total Spaces



Option 3

59 Total Spaces



PROJECT SCHEDULE/NEXT STEPS

PUBLIC MEETING #1
July 28, 2020

Design & Community Engagement Process

Project Kick-off with Committee members

Site Walk with Recreation Director

Schematic Design document prep

Public Engagement (On-line survey)

Value Analysis/Construction Cost Estimates

June – August

June 2nd

June 11th

June 30th

June 26th – July 24th

July 15th

Design Development (6 weeks)

Playground working group meeting #1

Playground working group meeting #2

Public Meeting #1

Public Meeting #2

July 1st – August 14th

July 13th

July 27th

July 28th

August 11th

Permitting

Construction Documentation

Construction Phase

**Phase work to open beach for 2021 season

September – October

September – November

October 2020 – October 2021

Project Completion

November 1, 2021