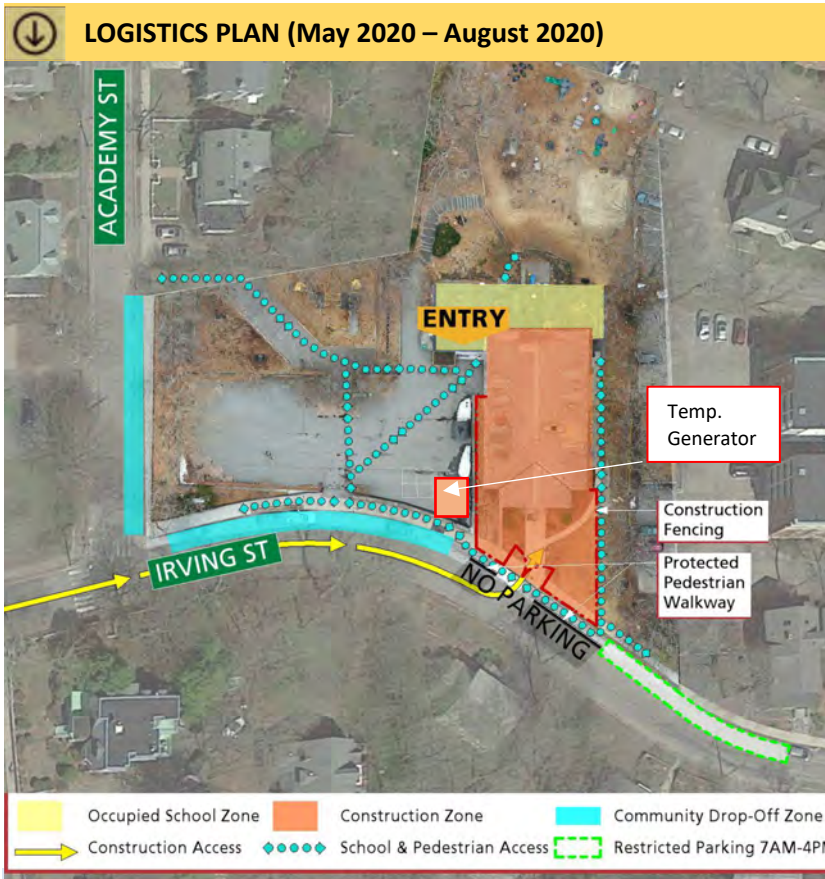




Arlington High School Building Project

Parmenter School Abutter Notice (Monthly) – August 2020

Construction Schedule: March 2020 – August 2020



Monthly Construction Look Ahead

Specific work to be performed this month includes:

Public Way Impacts

- Eversource pole work in street for power tie-in on Irving Street (Date not confirmed – Thru traffic will be maintained)

Exterior Site Activities

- Transition from existing to new power
- Demobilize laydown area in upper lot
- Dismantle emergency egress stair

Interior Site Activities

- Final punchlist
- Startup mechanical systems
- Final building inspections
- Furniture move in
- Owner turnover

Project Milestones

- Elevator Complete
- Final Plumbing/Electrical Inspections
- Life Safety Walkthrough
- Substantial Completion: August 18, 2020

Construction is expected to be completed by the end of August. The Town would like to thank the neighbors for their patience and flexibility during this project.

Construction Details

Construction work hours will be Monday through Friday and follow local bylaws. Overtime and Saturday work may be required as the schedule develops. Material deliveries and other work will be coordinated around traffic schedules to create as little disruption as possible. Protected pedestrian walkways will be implemented on Irving Street. All construction work will always be properly fenced off to maintain community safety.

Construction workers are no longer permitted to park in the Parmenter School blacktop area as Arlington public parks have reopened for public use. There will be limited parking on Irving Street throughout construction. Current 15-minute parking on Irving St. and Academy St. will remain with exception to the no parking zone directly in front of the Parmenter Irving St. entrance. There will be a dedicated construction delivery zone on Irving Street (shown in green on the logistics plan). This area will be in use from 7AM – 4PM, Monday through Friday.

COVID-19 Update

The health and safety of the community and workers on-site are of the highest priority and were taken into consideration in all project-related decisions. Per Governor Baker's announcement, construction work is deemed 'essential' and can continue. For the school to be completed on time, it is very important to maintain the original construction timeline as closely as possible. The construction team will also be maximizing the schedule as students are off-site during this time. Per the Consigli COVID-19 safety plan, all workers are required to have their temperature monitored upon arrival, protocol is in place for any worker exhibiting signs of COVID-19. The Town of Arlington continues to monitor all state and federal guidelines regarding best practices during this unusual time and will modify recommendations as necessary to maintain safety and health for our community and construction workers.

For immediate on-site assistance, contact Hal Raymond, Skanska Site Representative, (617) 352-8593.

For more information, visit www.ahsbuilding.org. | Email questions or concerns to ahsbuilding@arlington.k12.ma.us.



CONSIGLI
Est. 1905

PARMENTER SCHOOL

MONTHLY UPDATE - AUGUST

Progress Photographs – Taken 8/4/2020



Photograph 1: Elevator shaft metal panels and roof slate installed



Photograph 2: Finished space on 4th floor



CONSIGLI
Est. 1905

PARMENTER SCHOOL

MONTHLY UPDATE - AUGUST



Photograph 3: New ductwork on 4th floor



Photograph 4: New handrails and sidewalks at front entrance



CONSIGLI
Est. 1905

PARMENTER SCHOOL

MONTHLY UPDATE - AUGUST



Photograph 5: New finished elevator on 4th Floor



Photograph 6: ADA lift Installation



CONSIGLI
Est. 1905

PARMENTER SCHOOL

MONTHLY UPDATE - AUGUST



Photograph 7: Elevator cab and finishes on 1st floor



Photograph 8: New asphalt paving at front entry



CONSIGLI
Est. 1905

PARMENTER SCHOOL

MONTHLY UPDATE - AUGUST



Photograph 9: Existing classroom



Photograph 10: New elevator shaft with temporary access stair tower removed