

ARLINGTON RESERVOIR

Phase 2 Design & Implementation

PUBLIC MEETING #2

August 11, 2020



- **Initial concepts for feedback**
 - Main parking
 - Beach area
 - Playground
- **Pickleball**
- **Trees at the beach**



THE PHASE 2 PROJECT

- Filtration building
- Concession/bath house
- Picnic pavilion
- Seating
- Trail amenities
- Invasive species
- Fencing
- Access to beach
- Accessibility/inclusivity
- Playground
- Boating
- Fishing
- Volleyball
- Pickleball
- Signage
- New plantings
- Connections around the pond



PROJECT SCHEDULE

PUBLIC MEETING #2
August 11, 2020

Design & Community Engagement Process

Project Kick-off with Committee members

Site Walk with Recreation Director

Schematic Design document prep

Public Engagement (On-line survey)

Value Analysis/Construction Cost Estimates

June – August

June 2nd

June 11th

June 30th

June 26th – July 24th

July 15th

Design Development (6 weeks)

Playground working group meeting #1

Playground working group meeting #2

Public Meeting #1

Public Meeting #2

July 1st – August 14th

July 13th

July 27th

July 28th

August 11th

Permitting

Construction Documentation

Construction Phase

**Phase work to open beach for 2021 season

Project Completion

September – October

September – November

October 2020 – October 2021

November 1, 2021

MAIN PARKING CONCEPTS

PUBLIC MEETING #2

August 11, 2020

Option 1

36 Total Spaces



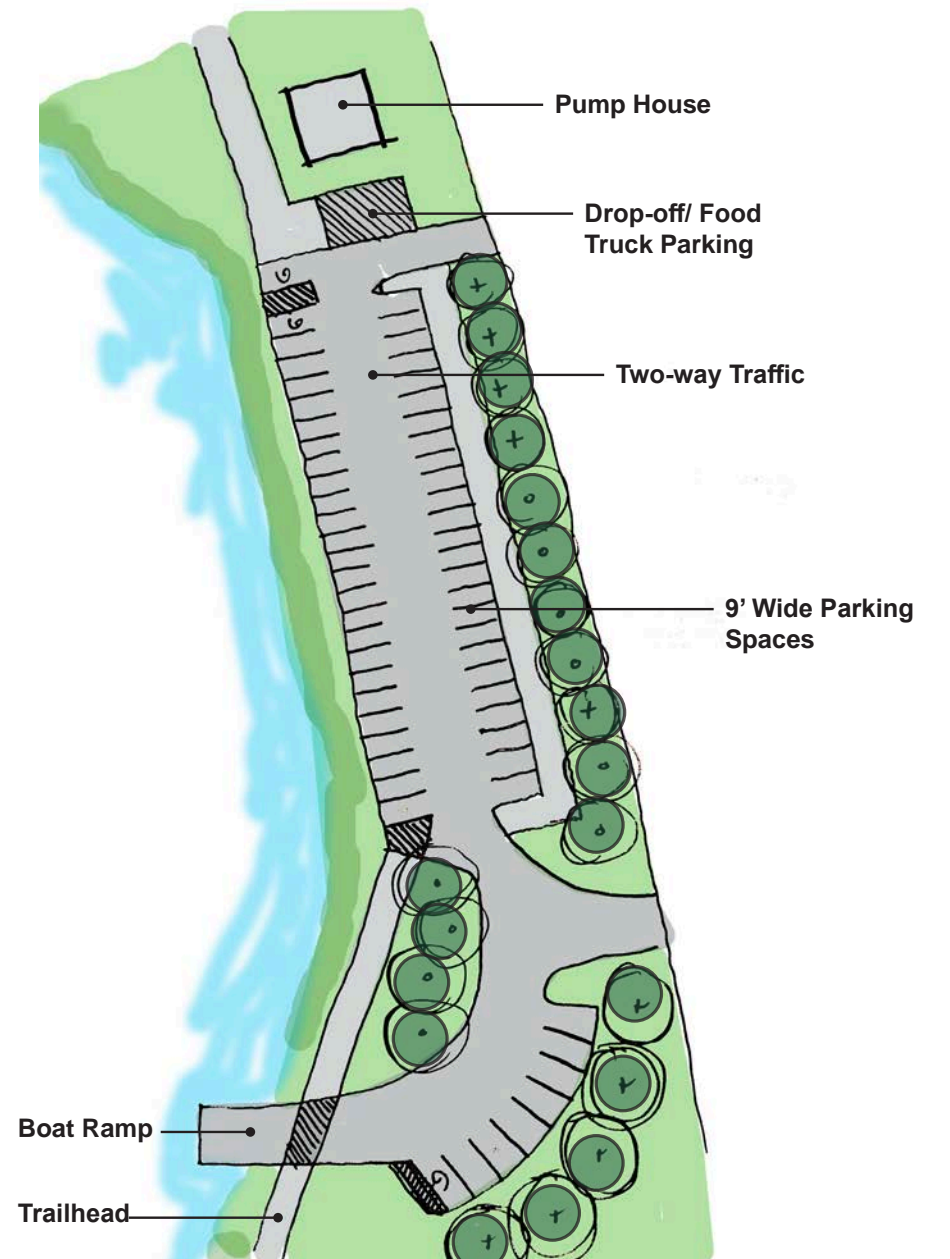
Option 2

67 Total Spaces



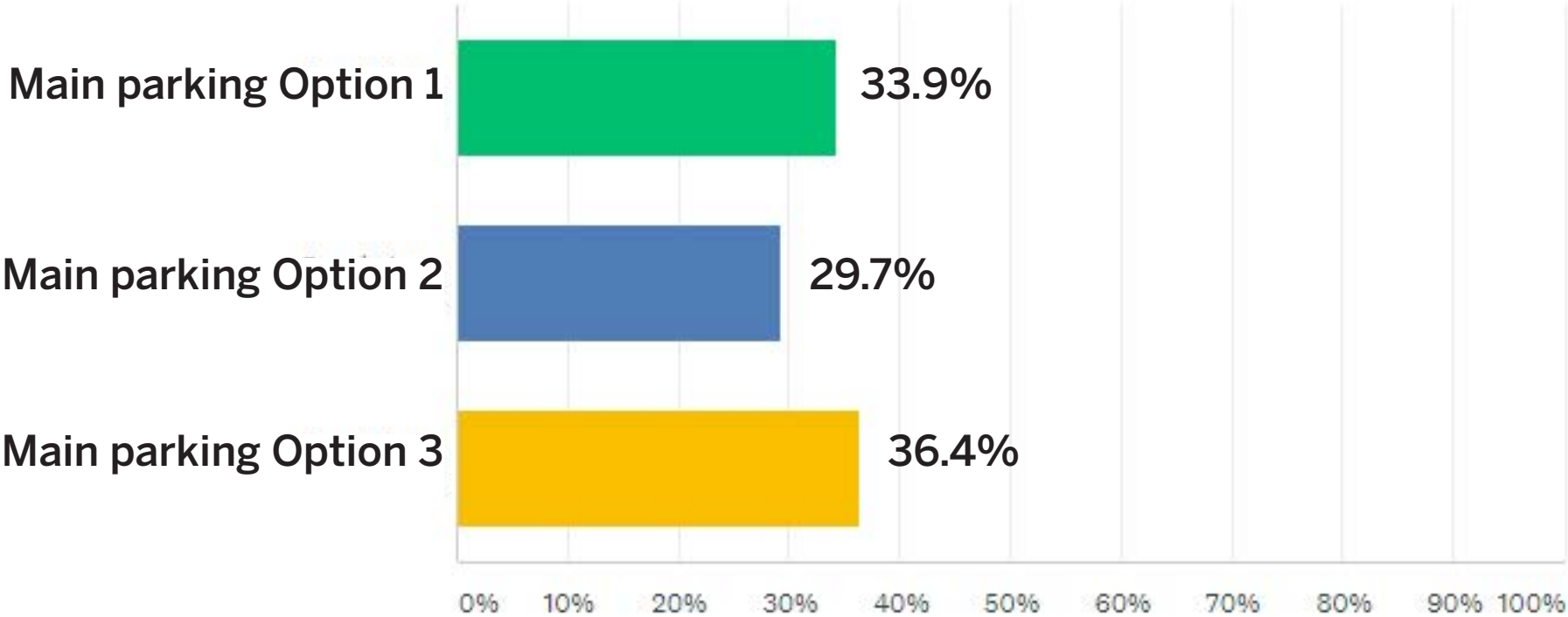
Option 3

59 Total Spaces



Please select which one of the 3 options you prefer:

Answered: 330



Please tell us what you do or do not like about these options:
(244 write-in responses)

- Balance between enough parking & no tree removal 75
- Want the maximum number of spaces 71
- Fewer parking space reduces overcrowding/emphasizes biking & walking 26
- Would like to see bike parking 7
- Prefer one-way traffic pattern 75
- Want the walkway along the pond side of parking 71
- Prefer the boat ramp near the parking 23
- Prefer the boat ramp away from the parking 17

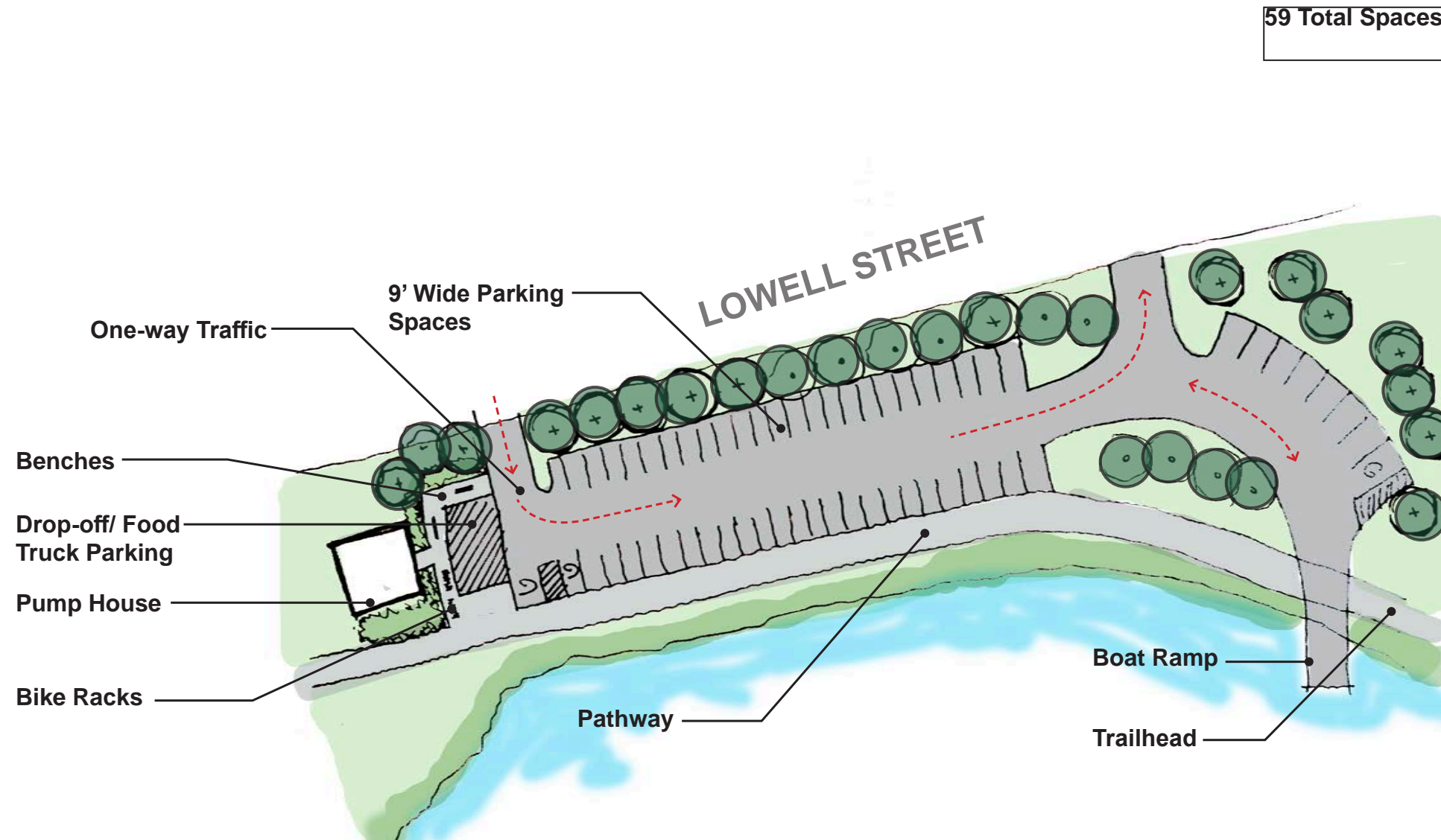
MAIN PARKING CONCEPTS - FEEDBACK

PUBLIC MEETING #2

August 11, 2020

Preferred option:

- One-way traffic pattern
- Maximizes parking spaces without removing trees
- Walkway along pond side of parking
- Allows for drop-off area and/or food truck parking
- Bike parking

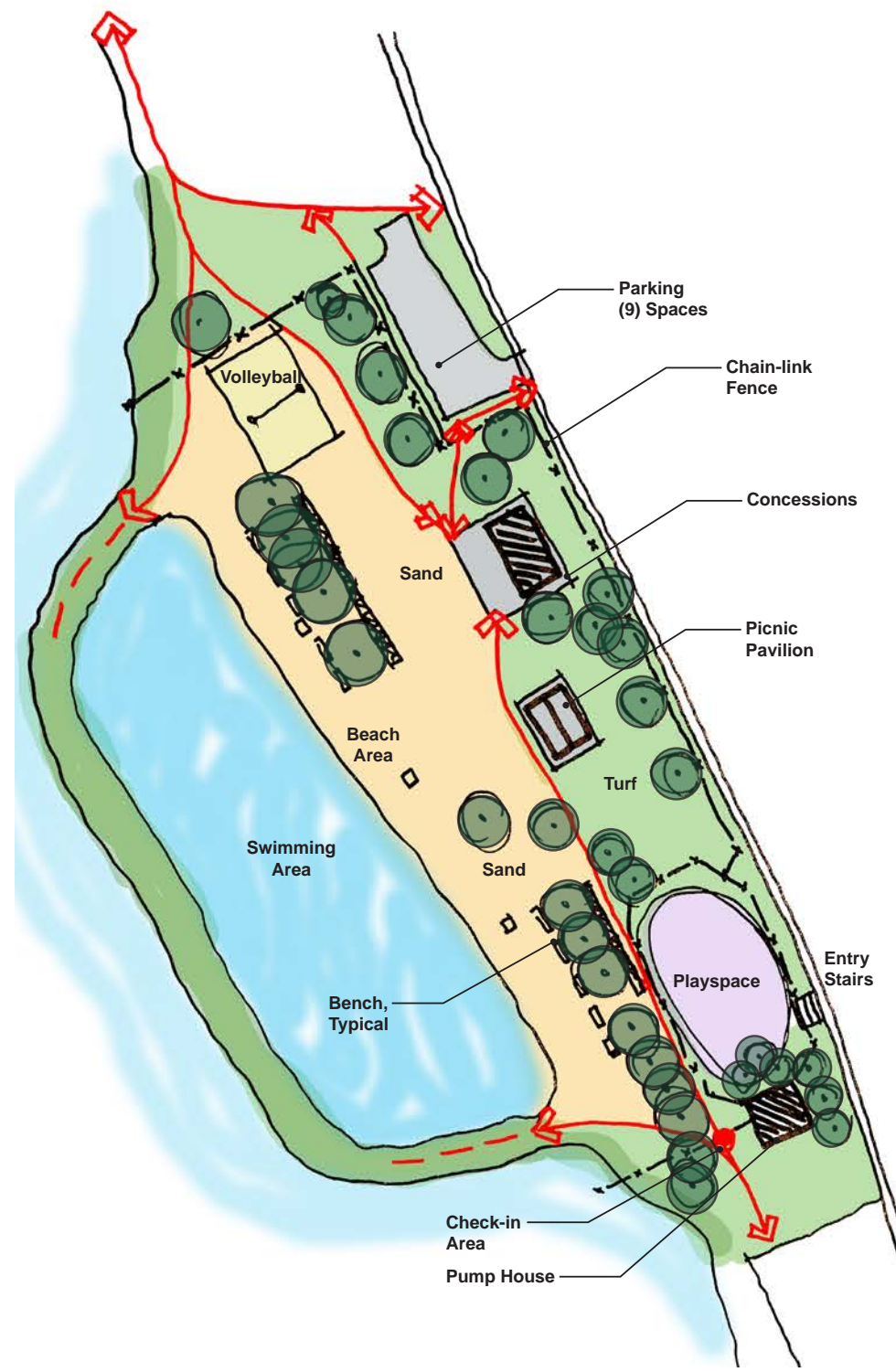


BEACH AREA CONCEPTS

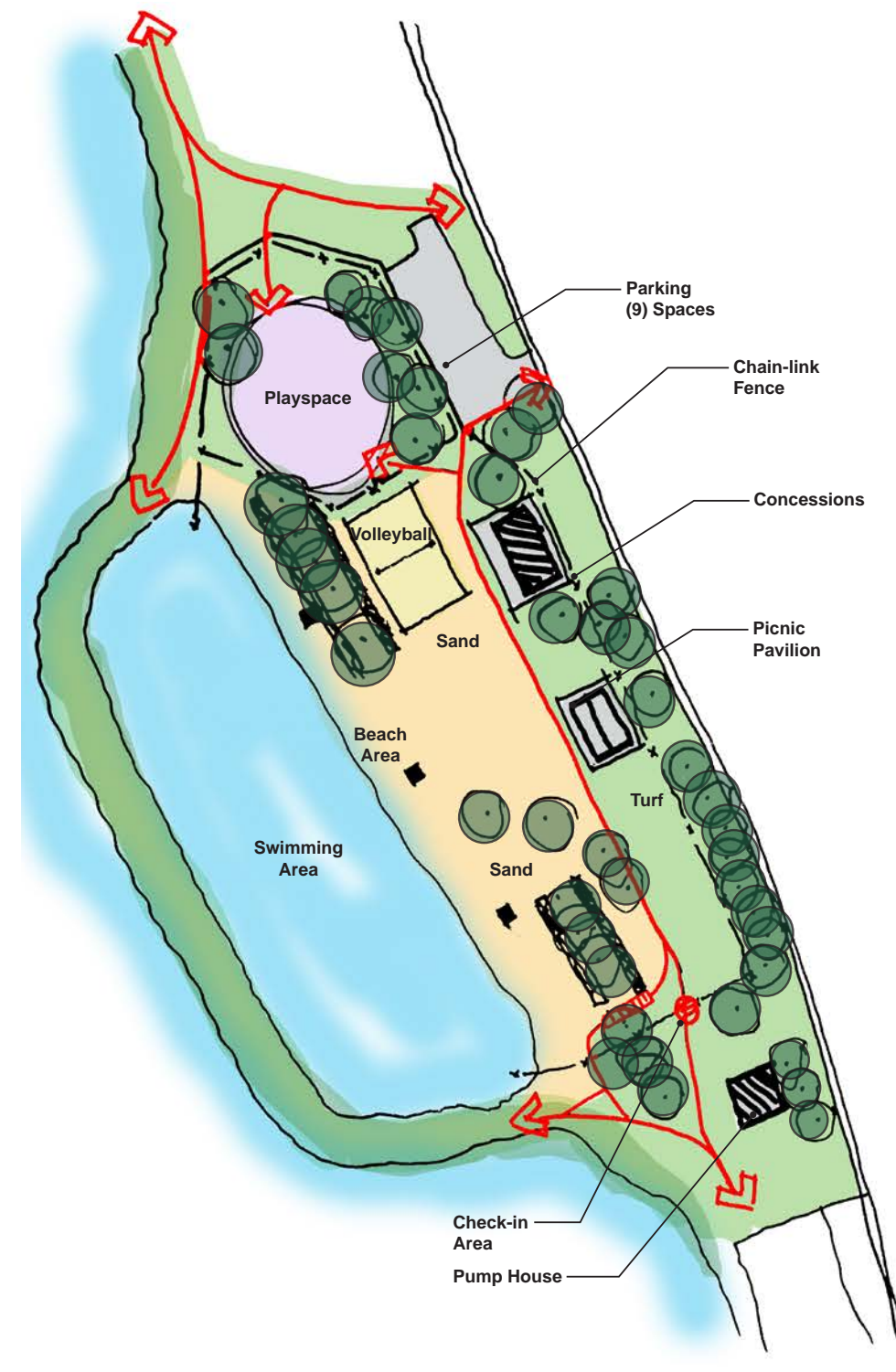
PUBLIC MEETING #2

August 11, 2020

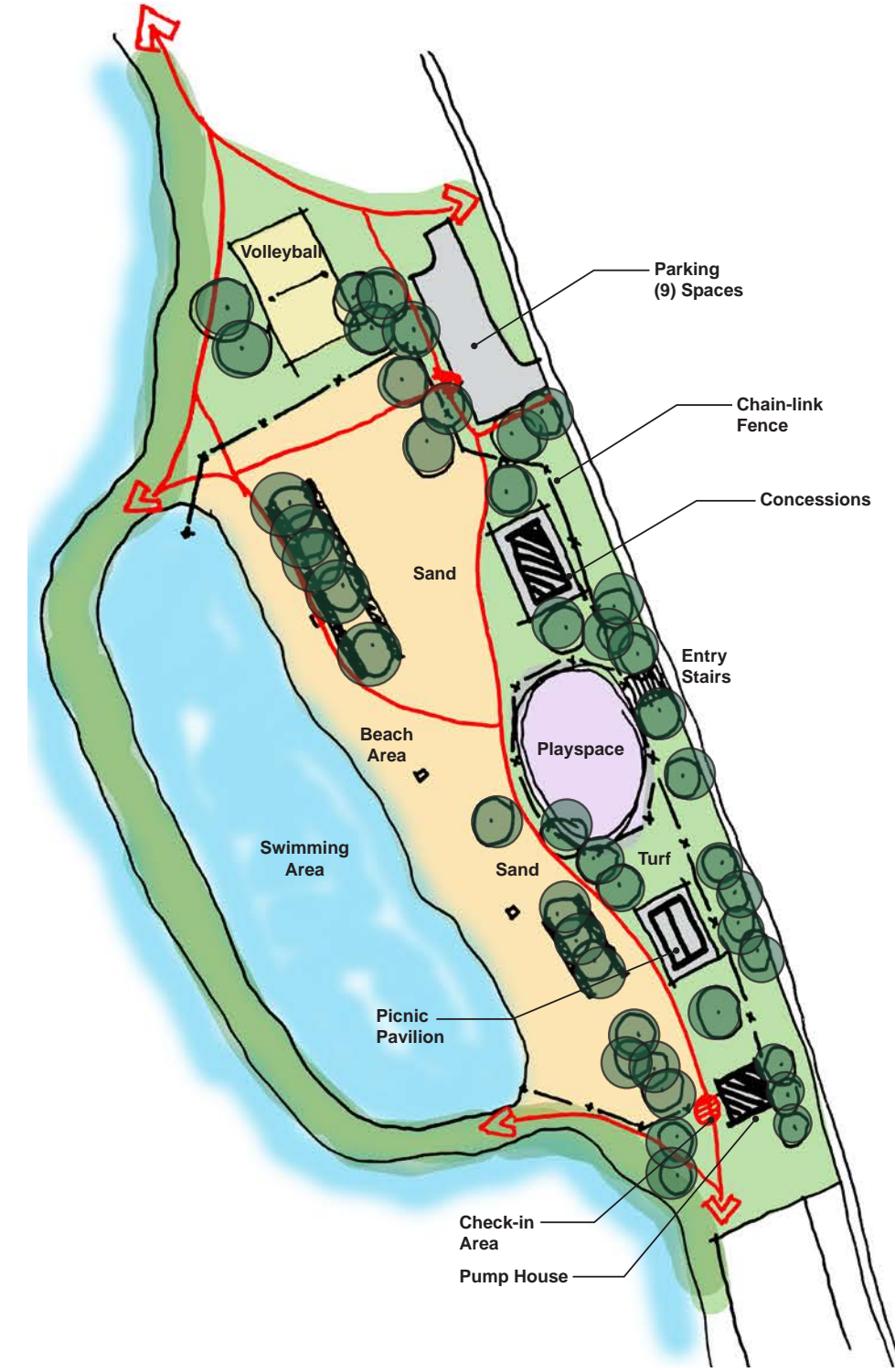
Option 1



Option 2

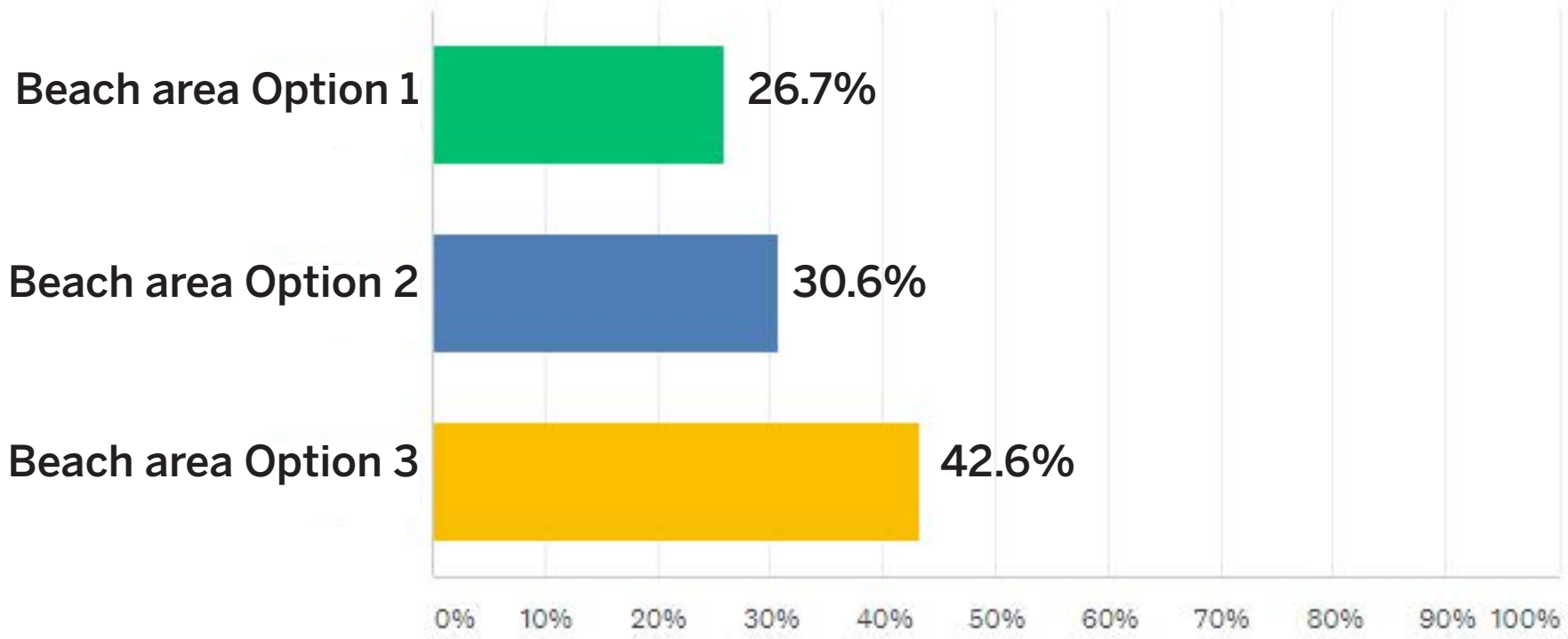


Option 3



Please select which one of the 3 options you prefer:

Answered: 359



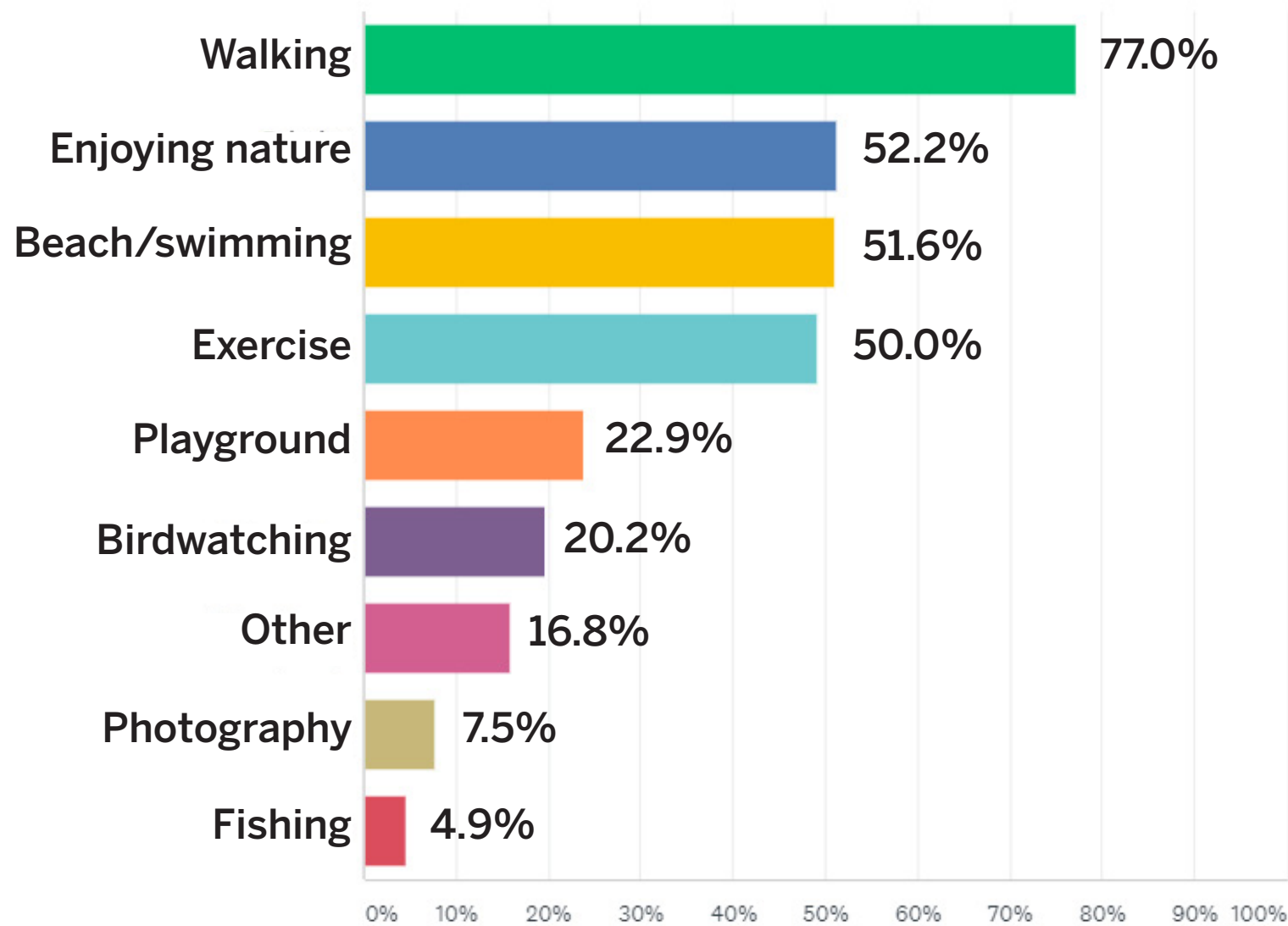
Please tell us what you do or do not like about these options:
(174 write-in responses)

- Like having the playground centralized (Option 3) 41
- Do not like playground too close to the street 14
- Playground close to the sidewalk is good for access 18
- Better to have the playground separated from the beach 16
- Keep the playground close to the beach 3
- Prefer playground next to parking/entrance 23
- Keep playground away from parking 7

Please tell us what you do or do not like about these options:
(174 write-in responses)

- Access to berm for year-round walking is critical 50
- No berm access necessary 6
- Prefer larger beach area 32
- Volleyball & playground should be separated 15
- Volleyball & playground should be together 7
- Volleyball should be outside the beach area 46
- Volleyball & playground should be near the beach 5
- Like amenities beyond swimming in the beach area 10
- Like playground accessible to non-beach-goers 35
- Picnic pavilion should be next to concessions 8

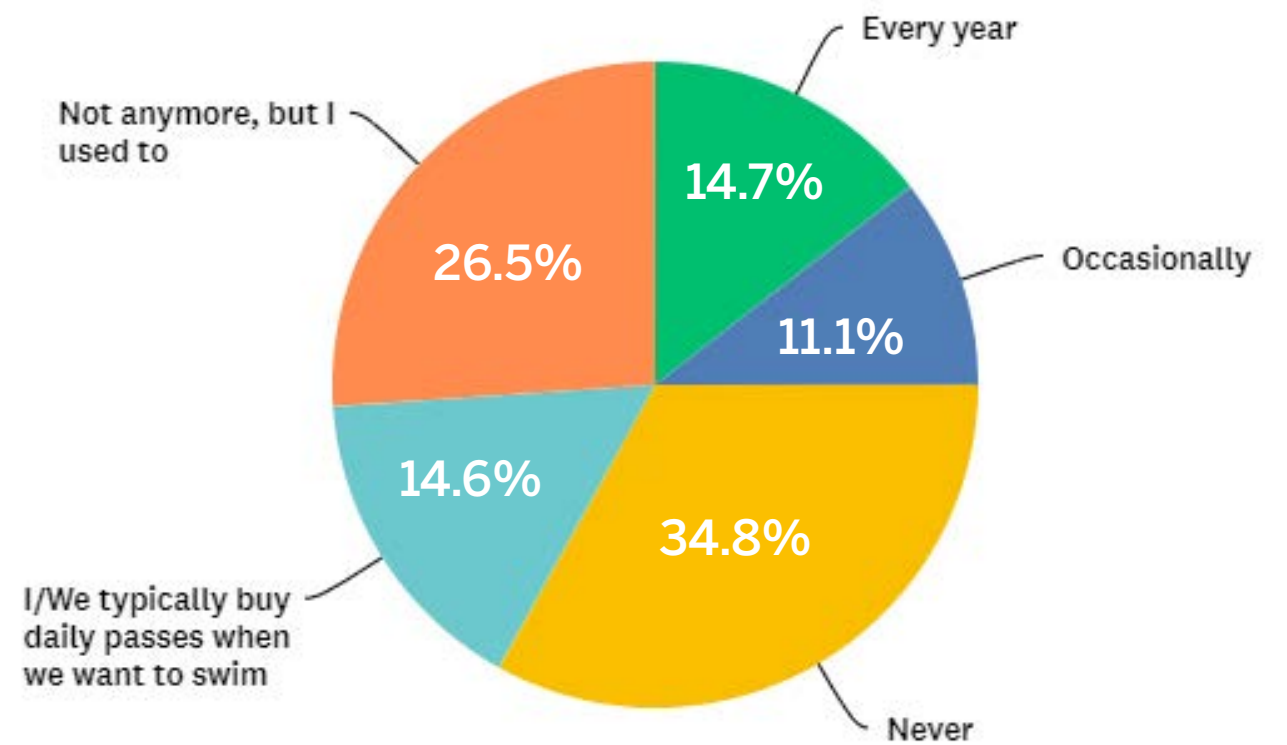
Why do you come to the Res?



Other responses (write ins):

- Dog walking 81
- Jogging/running 10
- Bicycling 7
- Watching cross-country races 6

Do you typically buy a seasonal pass for the beach?



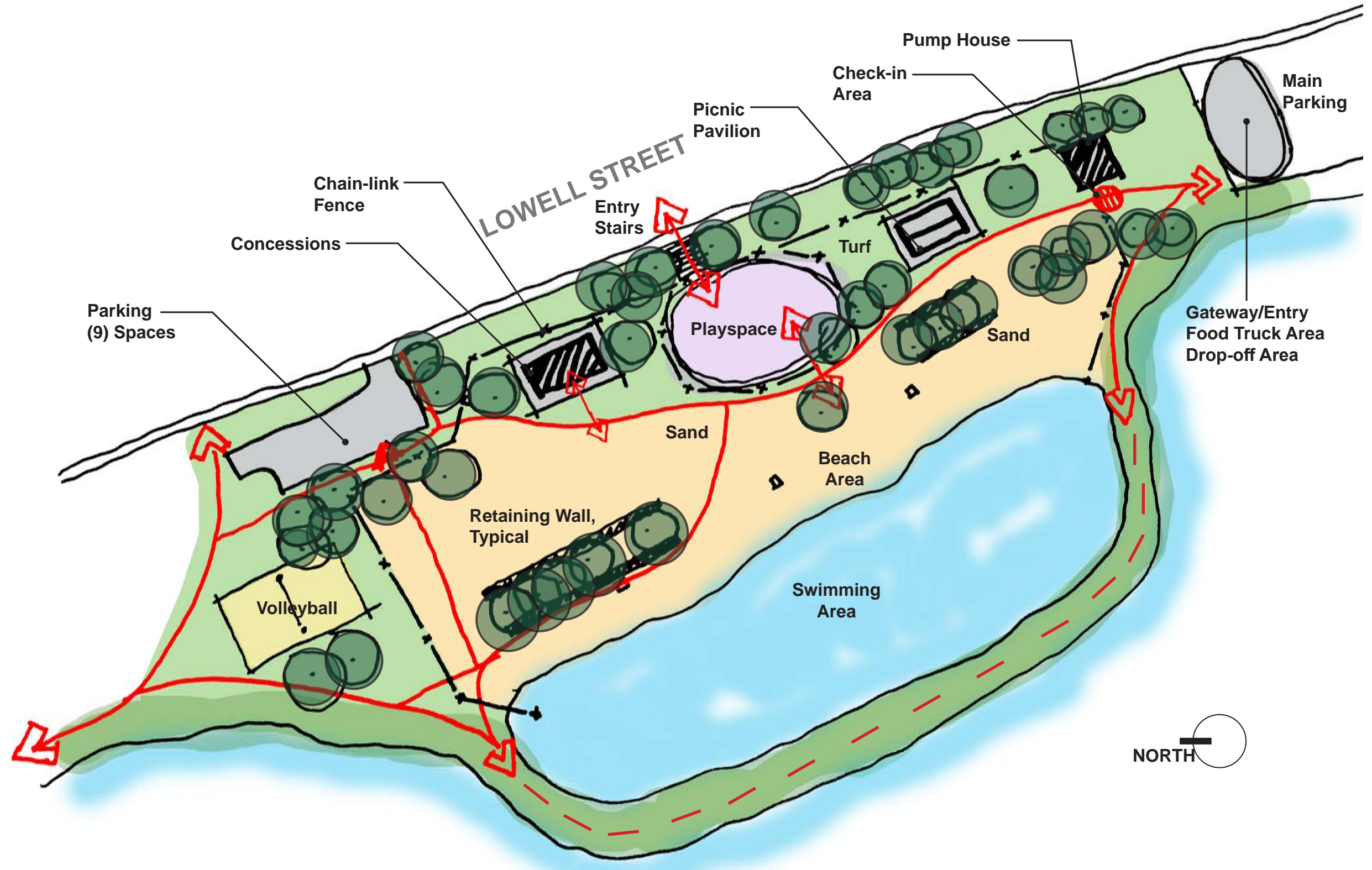
BEACH AREA CONCEPTS - FEEDBACK

PUBLIC MEETING #2

August 11, 2020

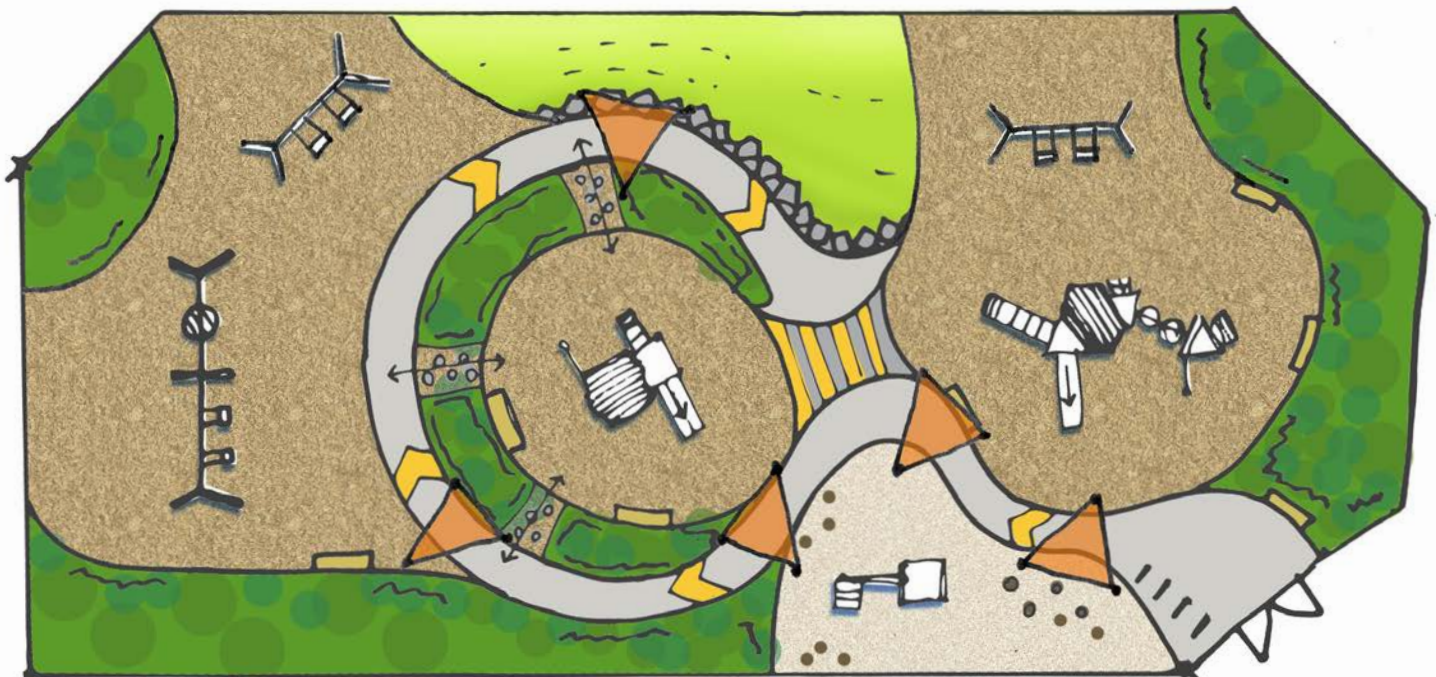
Preferred option:

- Allows access to berm for year-round walking
- Centralized playground with access to Lowell Street sidewalk
- Access to playground for non-beach-goers
- Maximize beach area
- Reconsider retaining walls at trees
- Location of picnic pavilion
- Location of volleyball

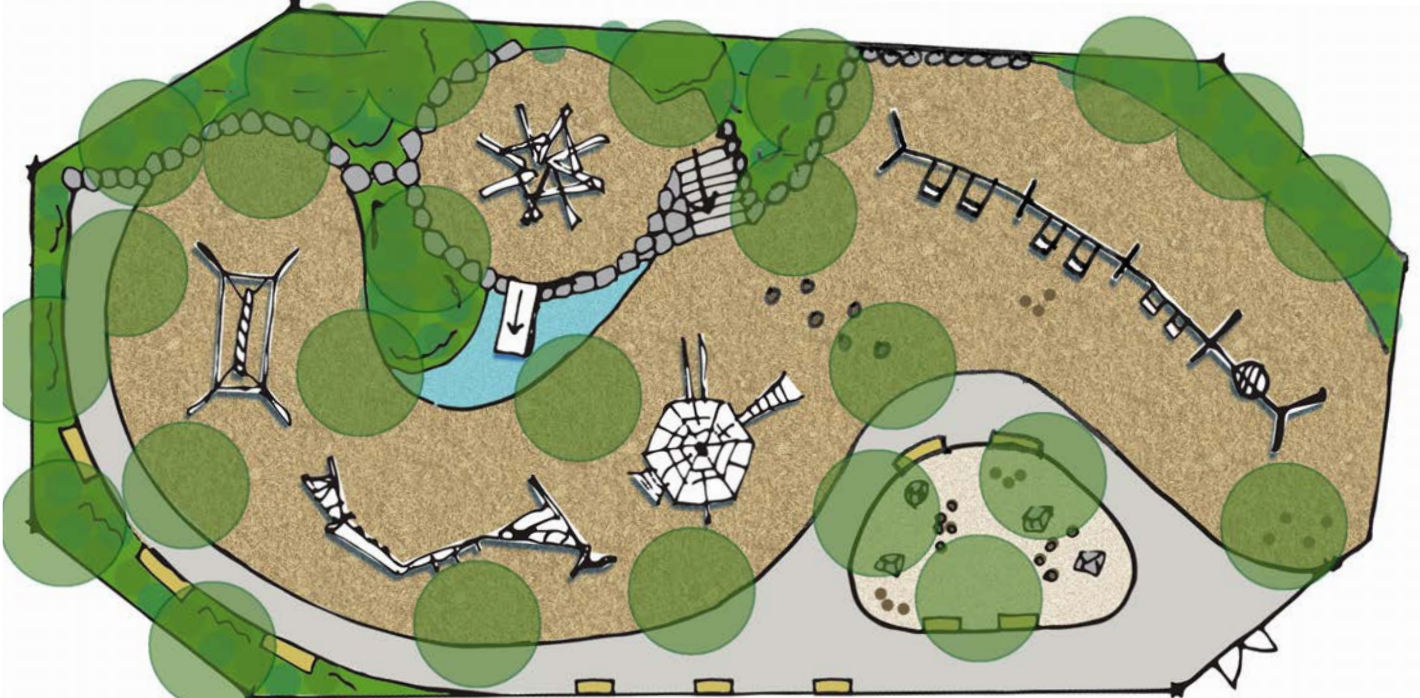


PLAYGROUND CONCEPTS - FEEDBACK

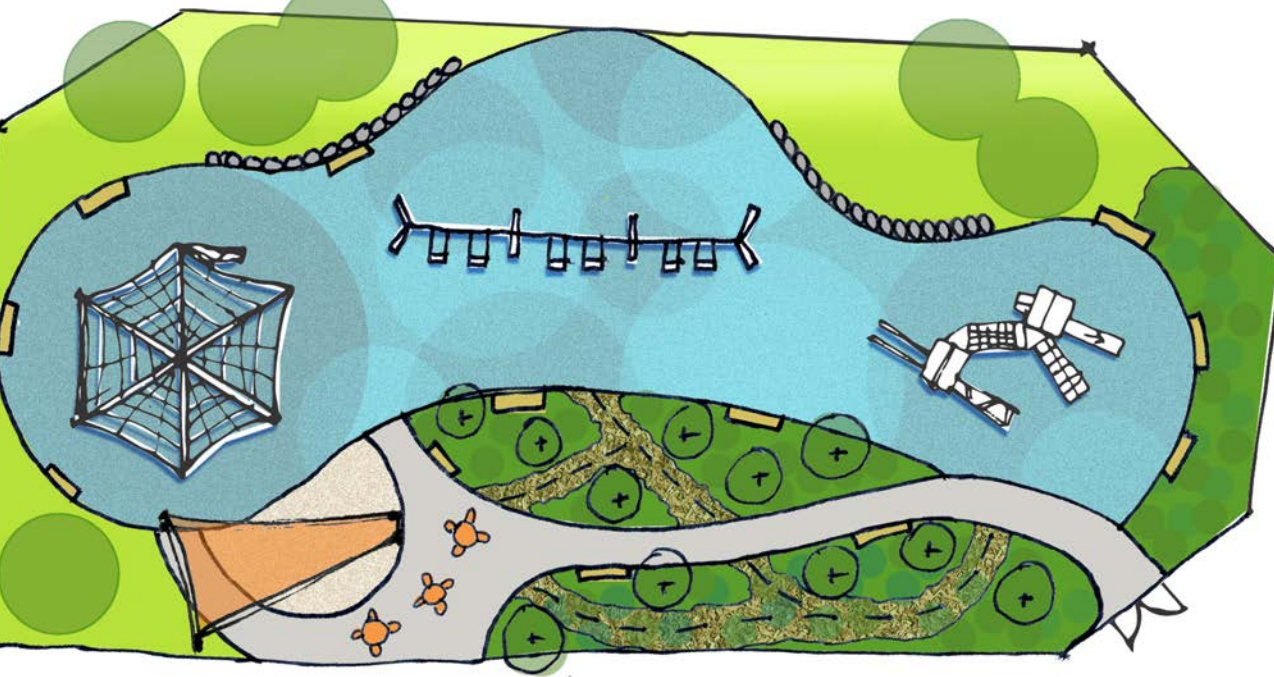
PUBLIC MEETING #2
August 11, 2020



Concept 1



Concept 2

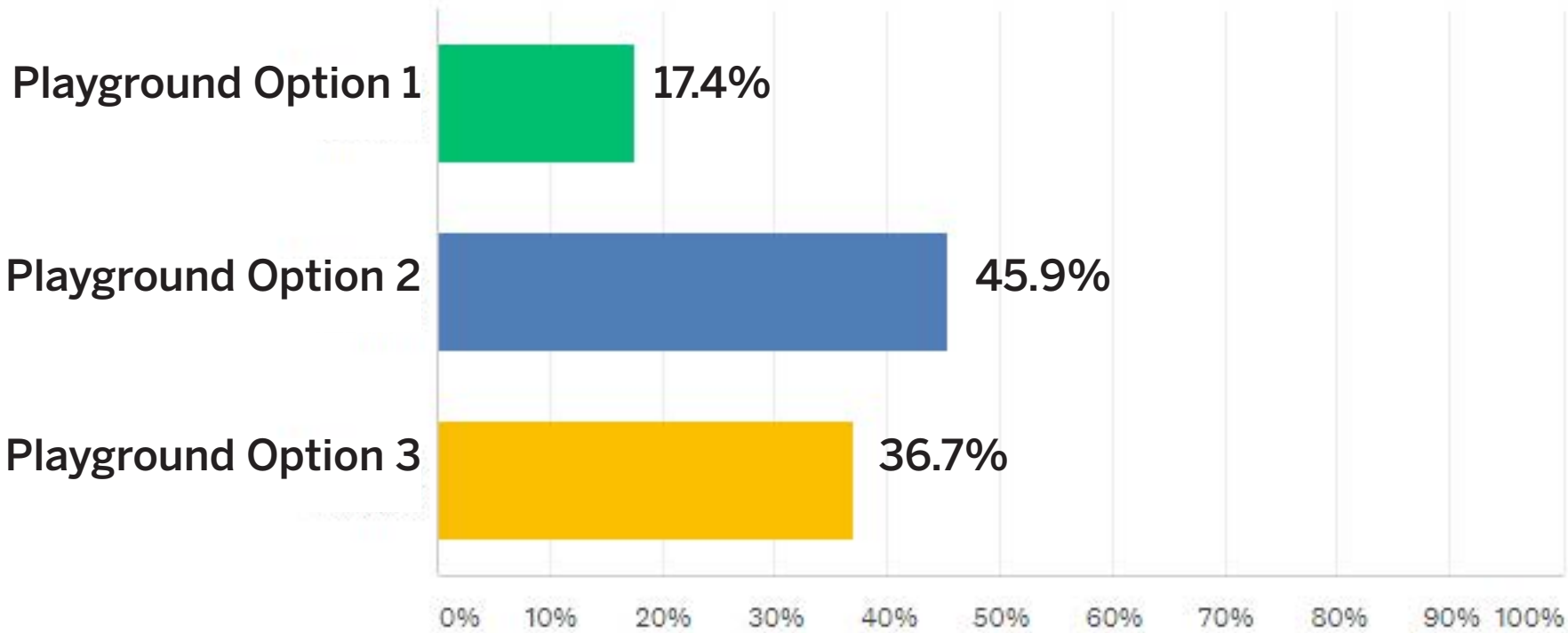


Concept 3



Please select which one of the 3 options you prefer:

Answered: 305



Please tell us what you do or do not like about these options:
(137 write-in responses)

- Like the natural look of Option 2 43
- Prefer shade from trees in Option 2 28
- Option 2 would be unique to Arlington 31

- Like the big climbing structure in Option 3 25
- Like the picnic tables in Option 3 9
- Like the idea of playing in plant beds of Option 3 3

- Like the shade structures in Option 1 8
- Option 1 looks like everything else 2

Please tell us what you do or do not like about these options:
(137 write-in responses)

- Prefer the more creative/interpretive play 16
- Like the trike path 14
- Do not like the ropes/web climbers 5
- Like the ropes/web climbers 7
- More swings/group swings 9
- Like the swings all grouped together 4
- Like the embankment slide 4
- Add monkey bars 4
- More slides 4
- Like the age separation 3

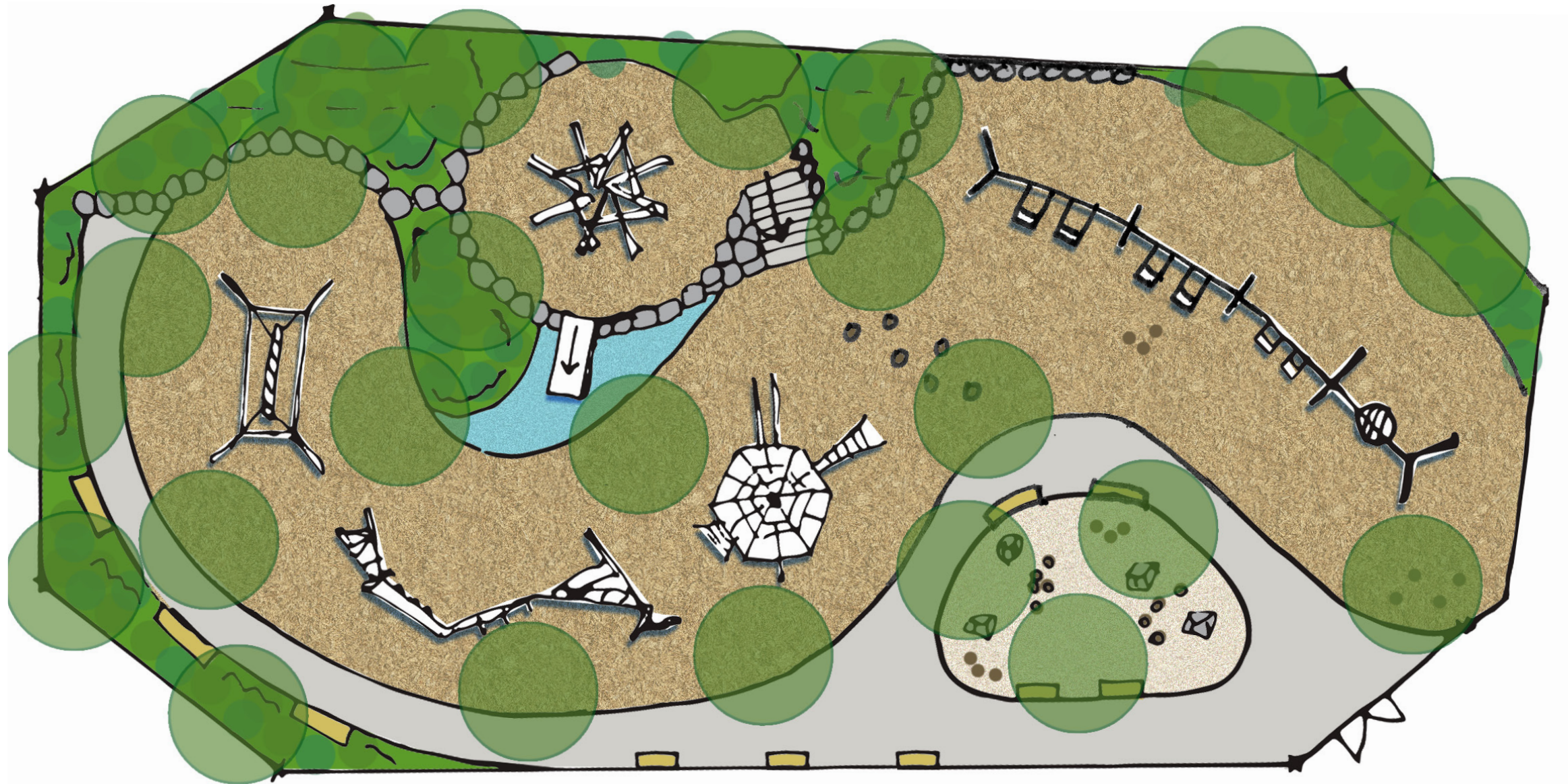
PLAYGROUND CONCEPTS - FEEDBACK

PUBLIC MEETING #2

August 11, 2020

Preferred option:

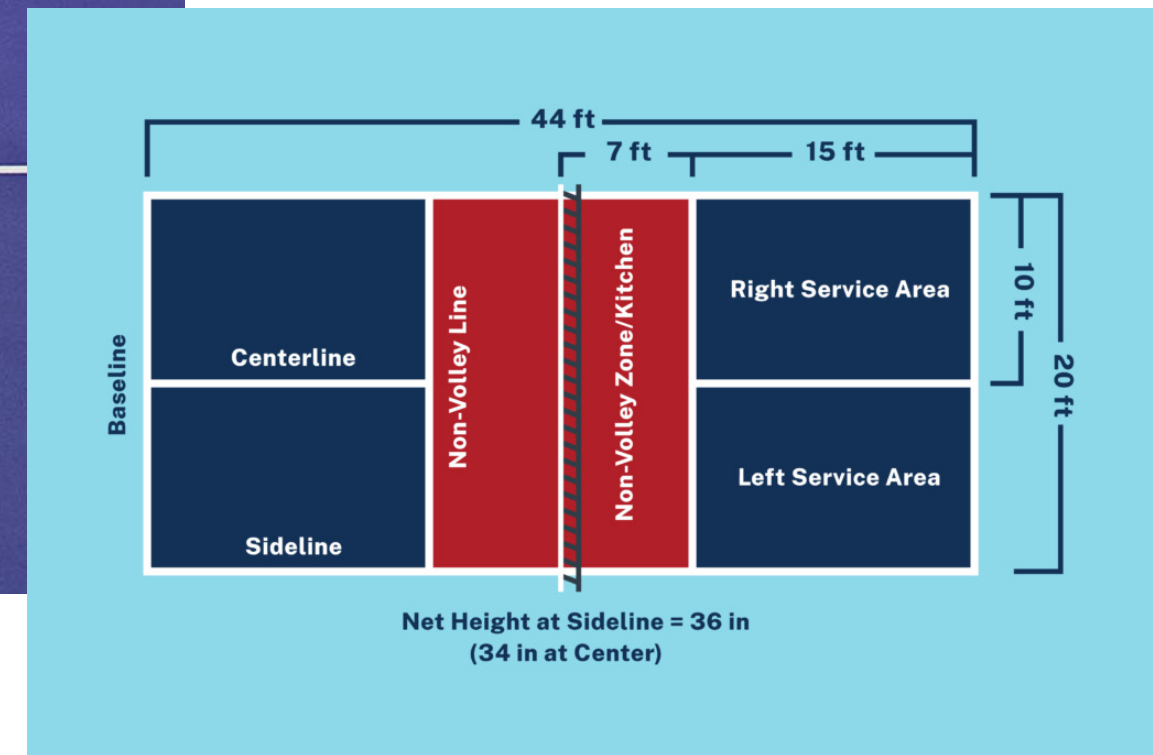
- Natural look of Option 2
- Trees for shade
- Move sand & water play to beach
- Trike path
- Add picnic tables
- Planting area for play
- Potential for larger climbing structure
- Embankment slide
- Include monkey bars



PICKLEBALL

PUBLIC MEETING #2

August 11, 2020



TOWN OF ARLINGTON ARLINGTON RESERVOIR - PHASE 2



PICKLEBALL

PUBLIC MEETING #2

August 11, 2020



TOWN OF ARLINGTON ARLINGTON RESERVOIR - PHASE 2



TREES AT THE BEACH

PUBLIC MEETING #2
August 11, 2020



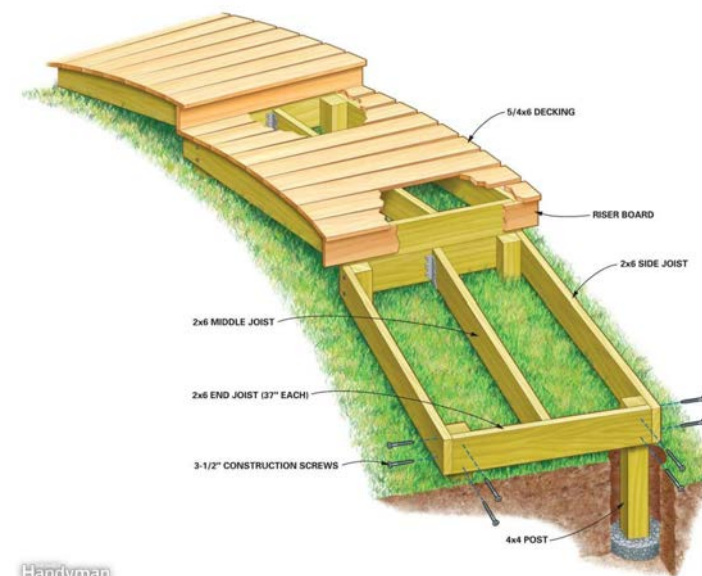
TOWN OF ARLINGTON
ARLINGTON RESERVOIR - PHASE 2



TREES AT THE BEACH

PUBLIC MEETING #2

August 11, 2020



TOWN OF ARLINGTON ARLINGTON RESERVOIR - PHASE 2



TREES AT THE BEACH

PUBLIC MEETING #2
August 11, 2020



TOWN OF ARLINGTON
ARLINGTON RESERVOIR - PHASE 2



PROJECT SCHEDULE

PUBLIC MEETING #2

August 11, 2020

Design & Community Engagement Process

Project Kick-off with Committee members

Site Walk with Recreation Director

Schematic Design document prep

Public Engagement (On-line survey)

Value Analysis/Construction Cost Estimates

June – August

June 2nd

June 11th

June 30th

June 26th – July 24th

July 15th

Design Development (6 weeks)

Playground working group meeting #1

Playground working group meeting #2

Public Meeting #1

Public Meeting #2

Playground working group meeting #2

July 1st – August 14th

July 13th

July 27th

July 28th

August 11th

TBD

Permitting

Construction Documentation

Construction Phase

**Phase work to open beach for 2021 season

September – October

September – November

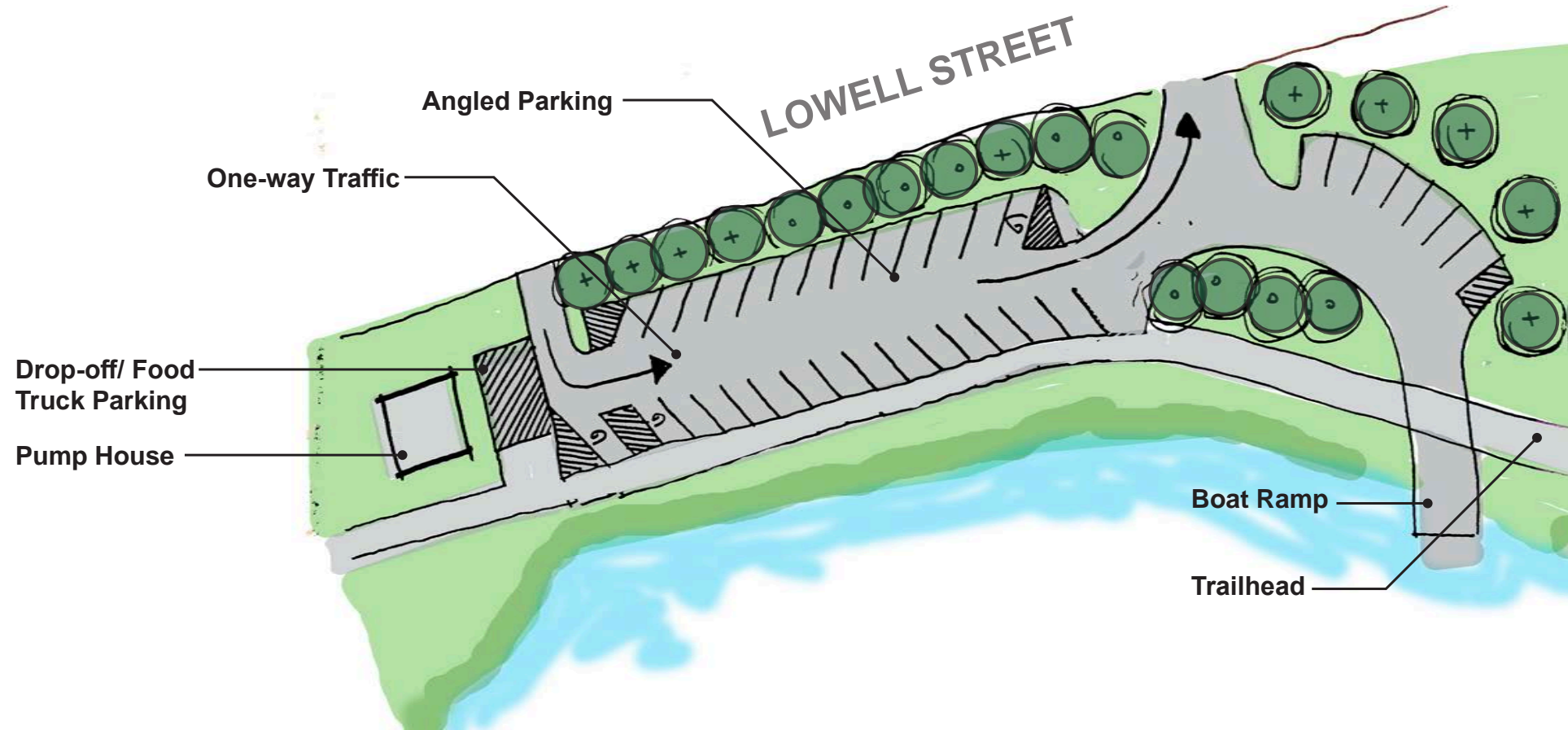
October 2020 – October 2021

Project Completion

November 1, 2021

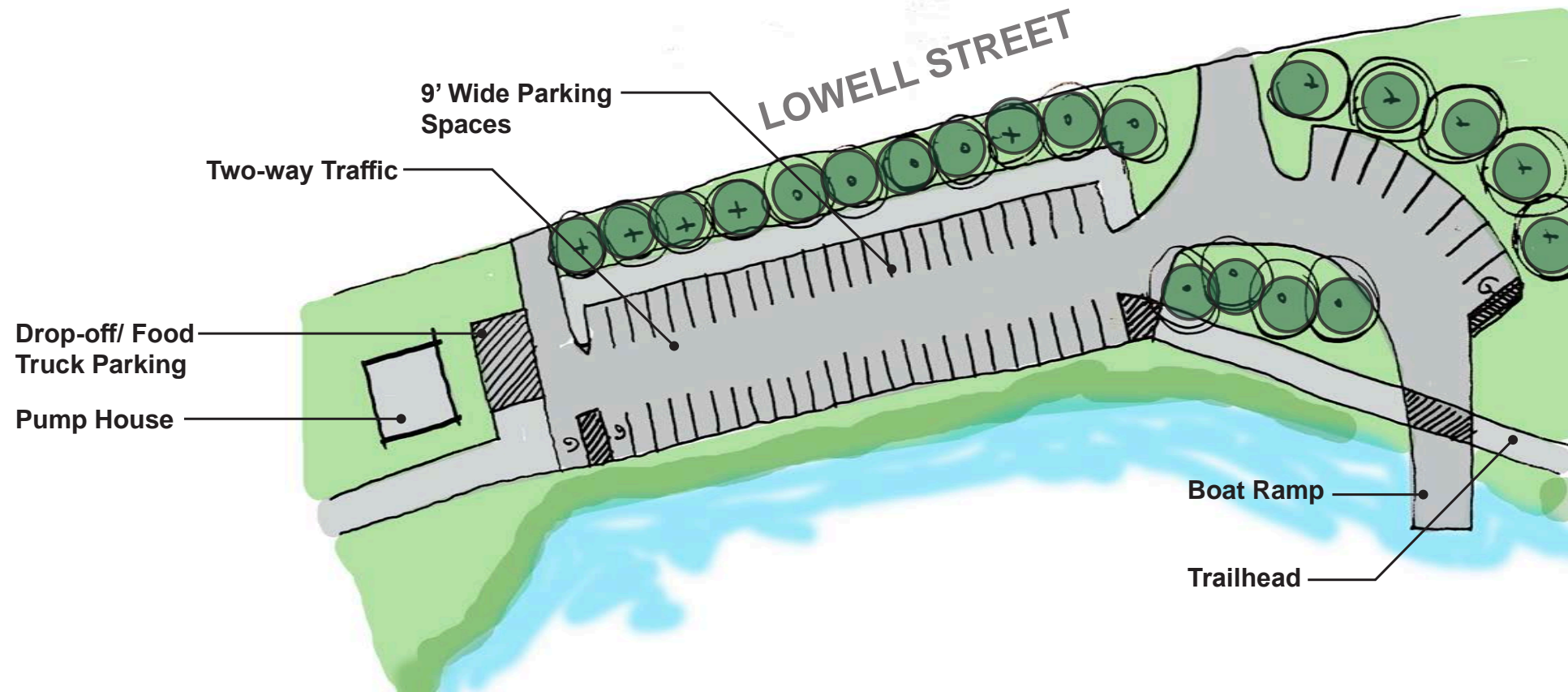
Option 1

36 Total Spaces



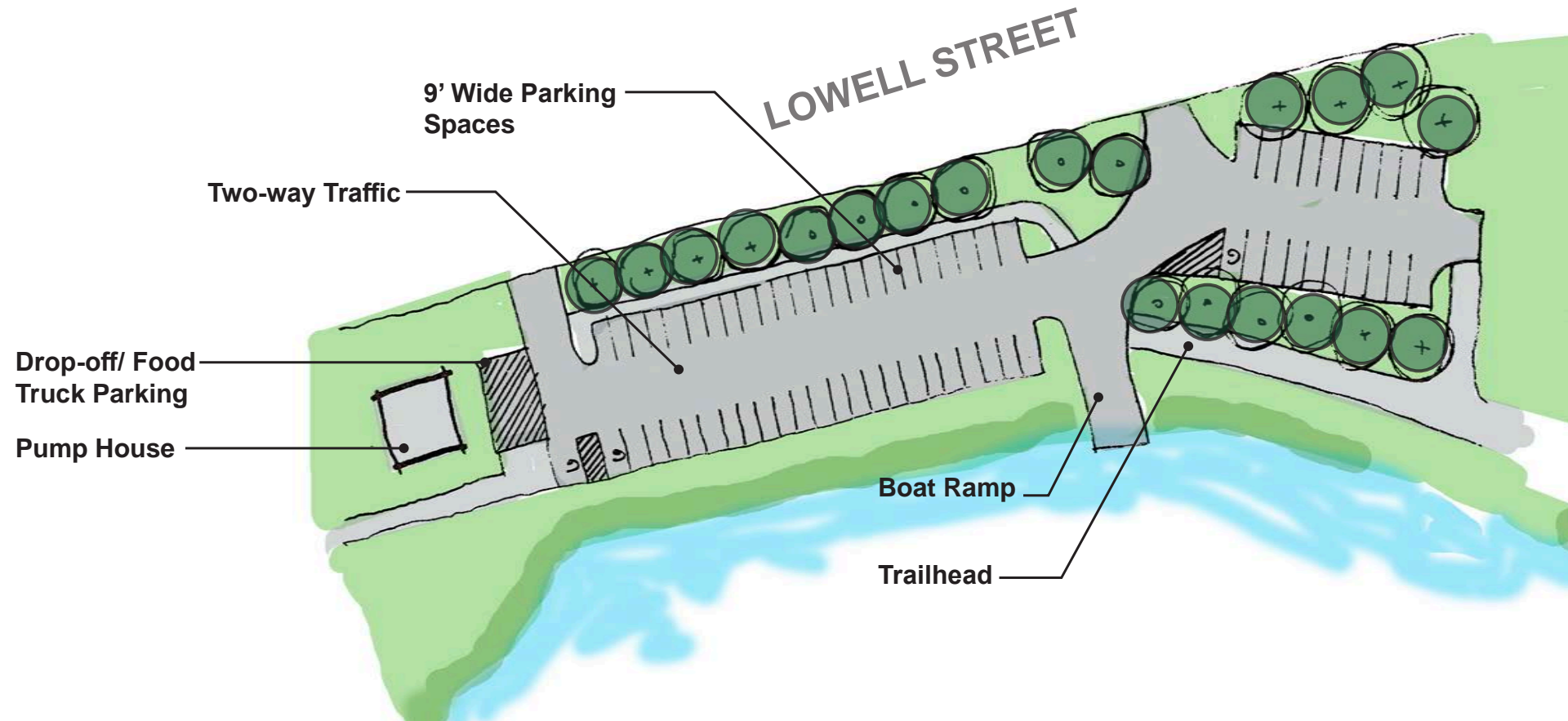
Option 2

59 Total Spaces

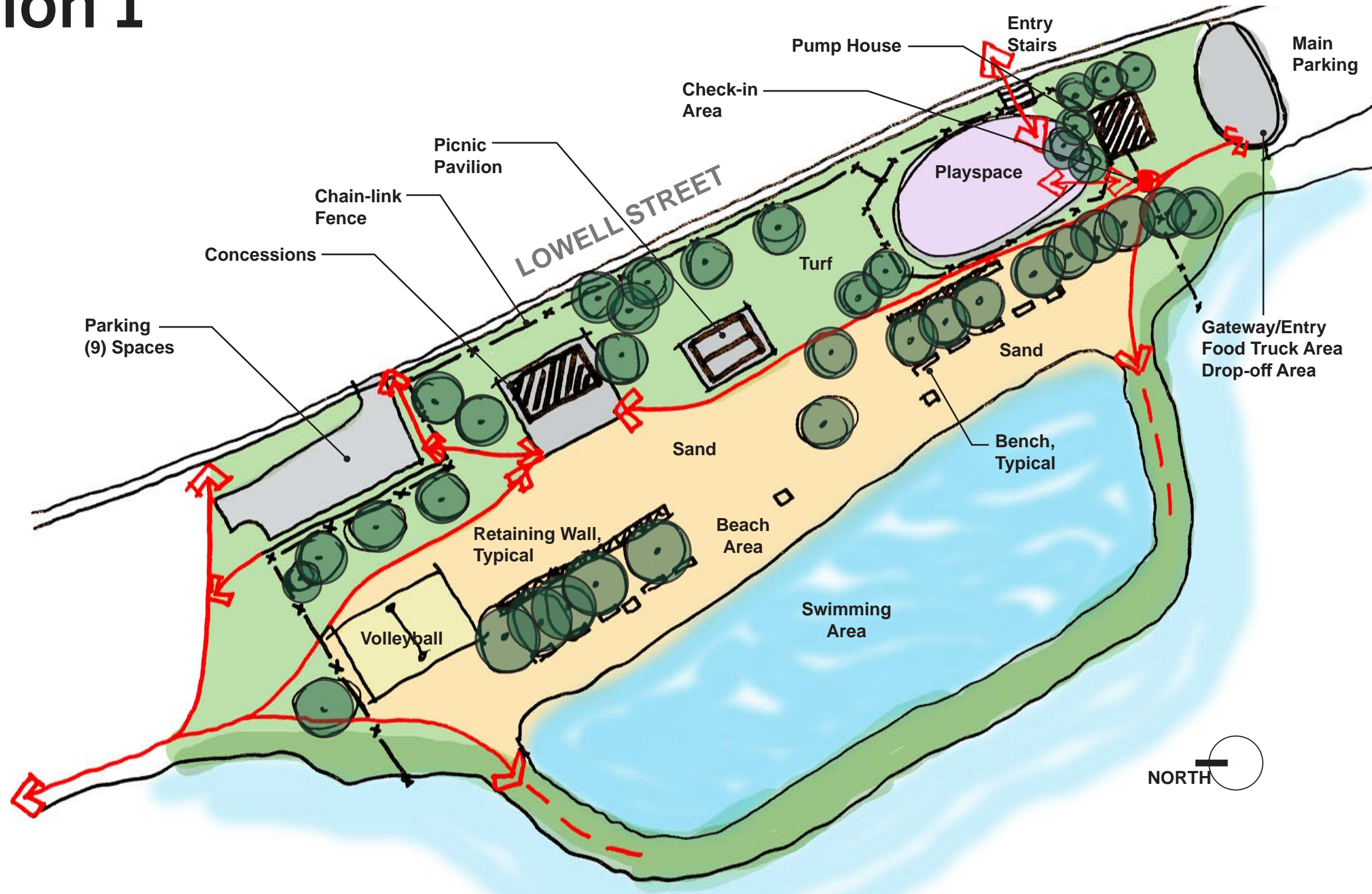


Option 3

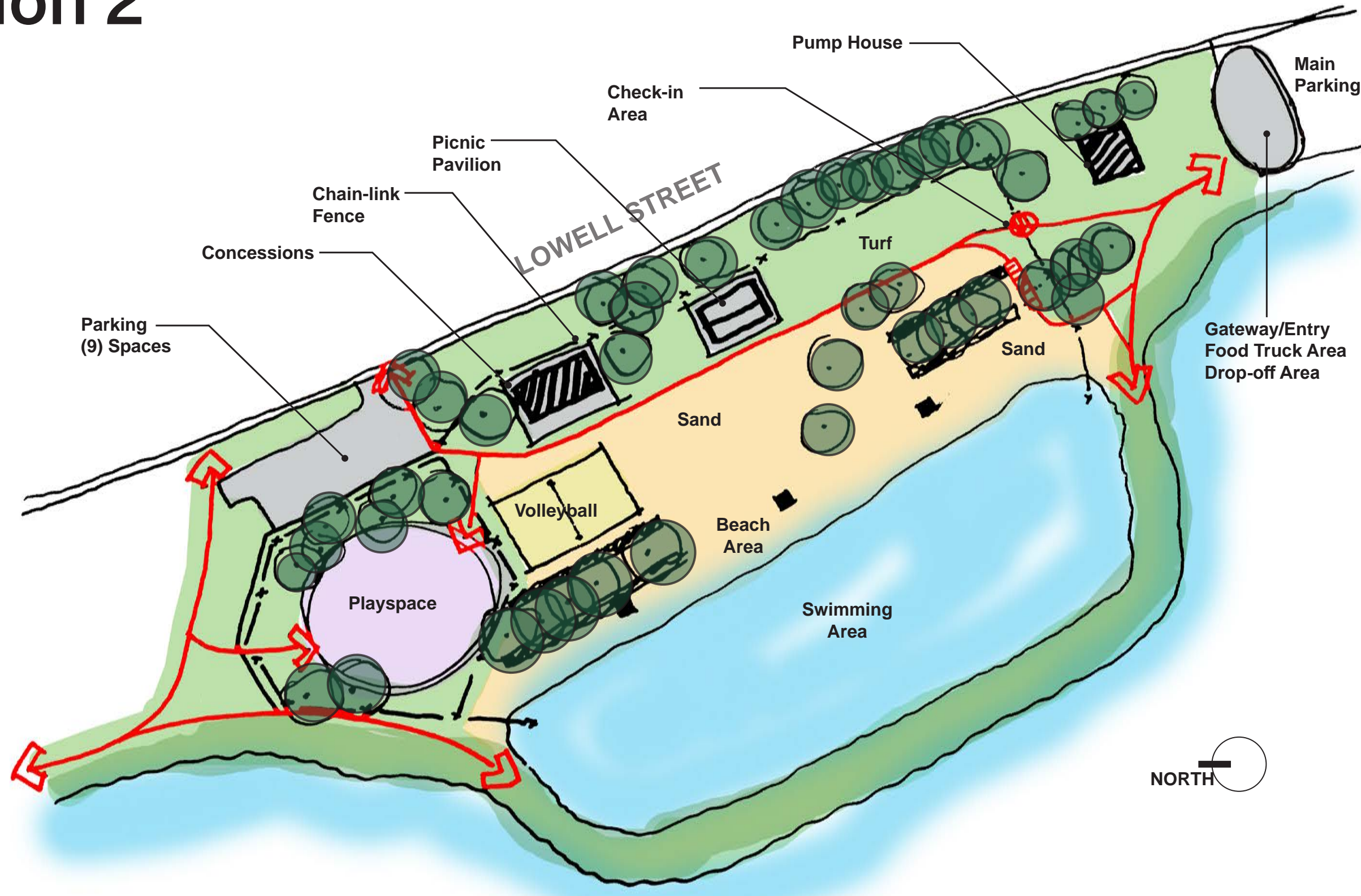
67 Total Spaces



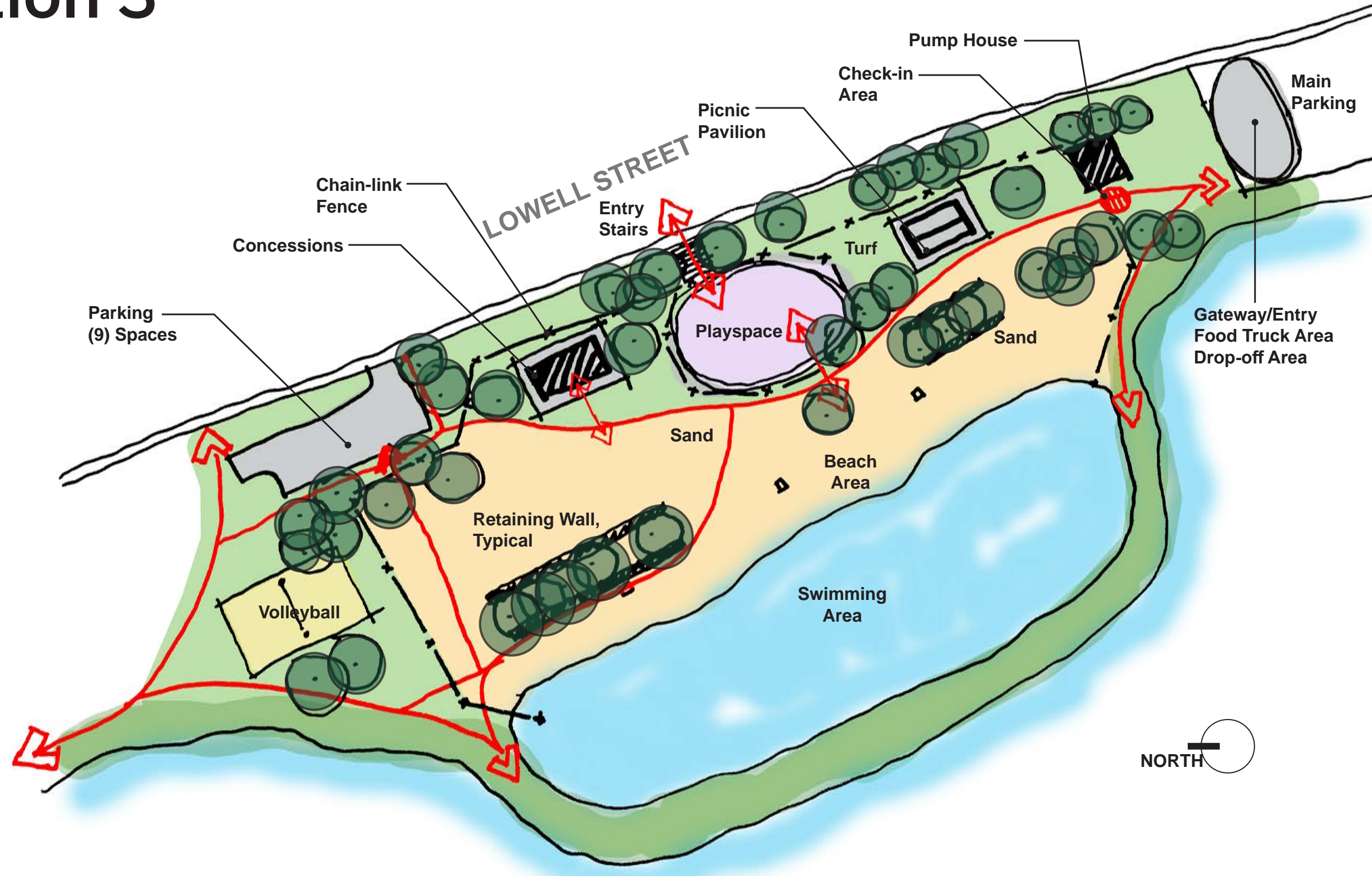
Option 1



Option 2

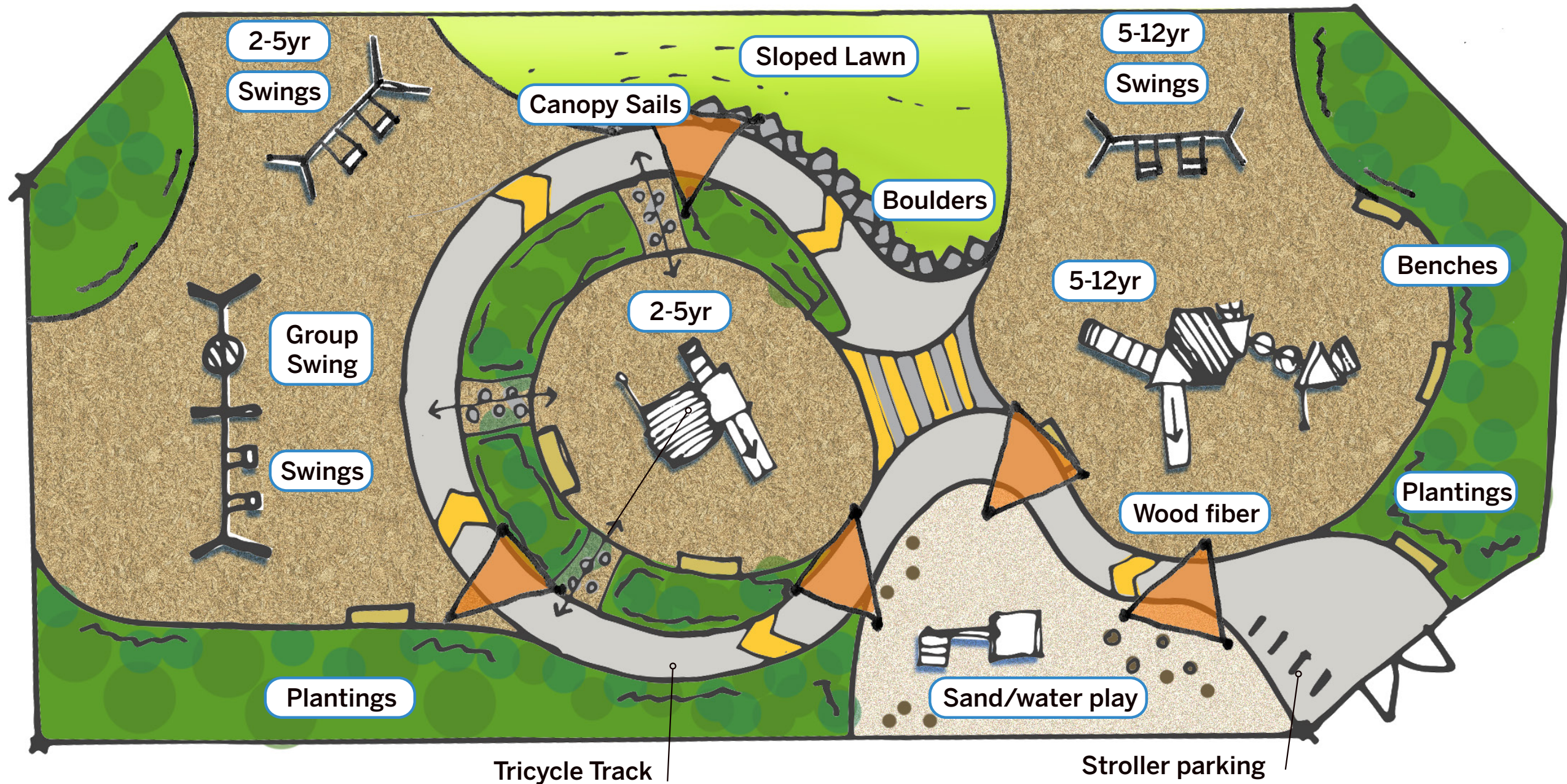


Option 3



Option 1

- Separate 2-5yr & 5-12yr play
- Main structures
- Wooden equipment
- Tricycle track loop
- Several shade canopy sails
- Swings spread out

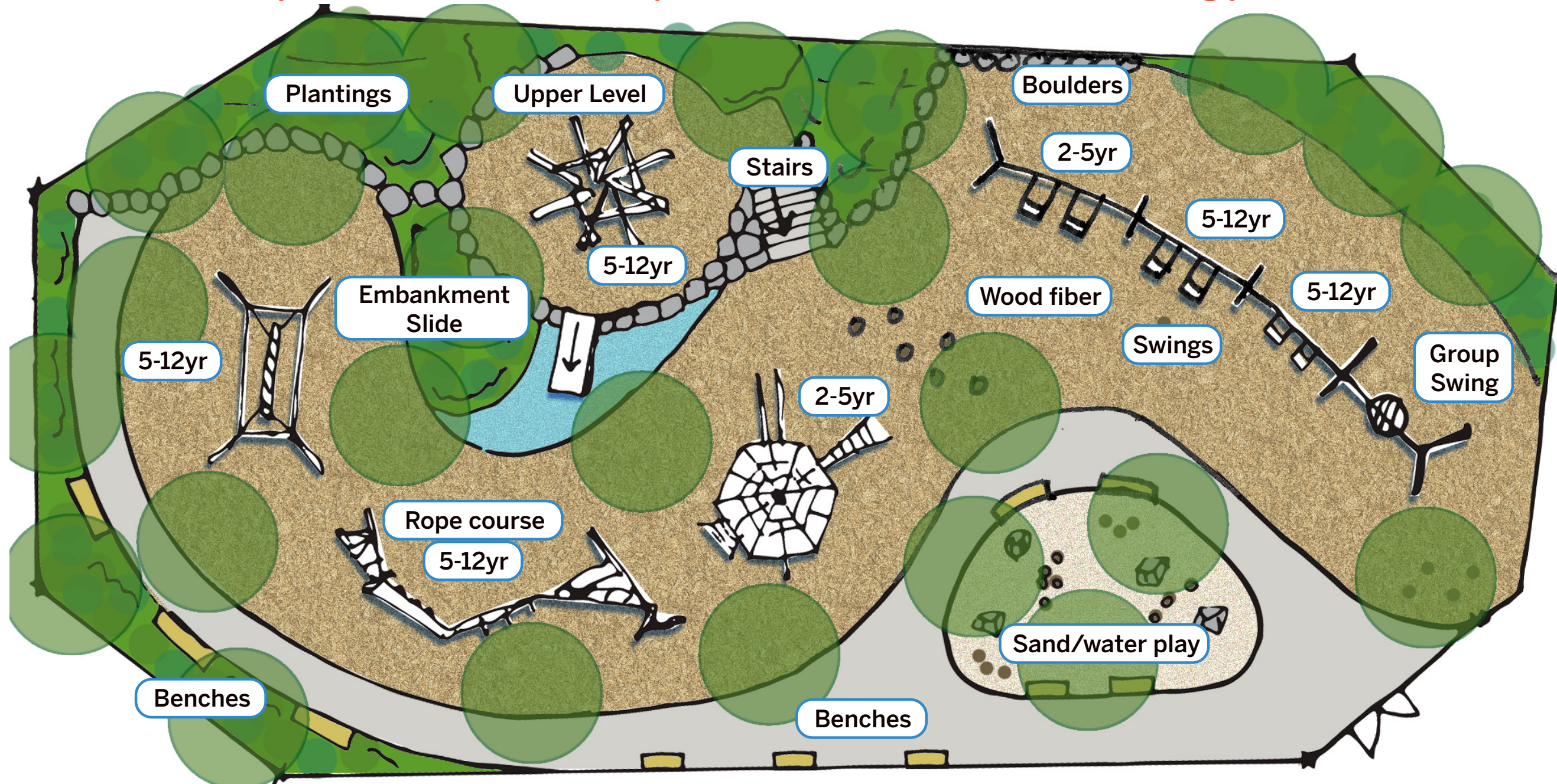


Option 2

- Combined play
- Several components

- Wooden equipment
- Rope course

- Shade via trees
- Paved walking path



Option 3

- 2 big group structures
- Combined swings
- Metal post equipment
- Rubber surfacing
- Shade canopy by picnic area
- Internal nature paths

