



# BLUEBIKES STATION LOCATIONS

For East Arlington & Arlington Center

# STATION LOCATIONS FOR EAST ARLINGTON & ARLINGTON CENTER

## **For approval this evening:**

1. Railroad Lot at Minuteman Bikeway
2. Mass Ave at Broadway
3. Mass Ave at Grafton St
4. Broadway at Grafton St

## **To be approved at a later date:**

1. Linwood St at Minuteman Bikeway
2. Thorndike Field at Minuteman Bikeway

# BIKE SHARE STATION SITING GUIDELINES

- Stations are 32' long and 6' wide
- Stations must be no more than 1/3 mile from at least one other station
- Stations cannot impede access to utilities like manholes
- Stations need to be placed on firm, level hardscape (no grass, no dirt)
- Stations require at least 4-6 hours of sunlight for power
- No near-term construction projects that would require relocating stations within two years
- Stations on sidewalk can stay out during winter—Bluebikes will shovel out (stations located on sidewalks may not impede accessibility). Stations on street may need to be removed for winter plowing at Town's discretion.

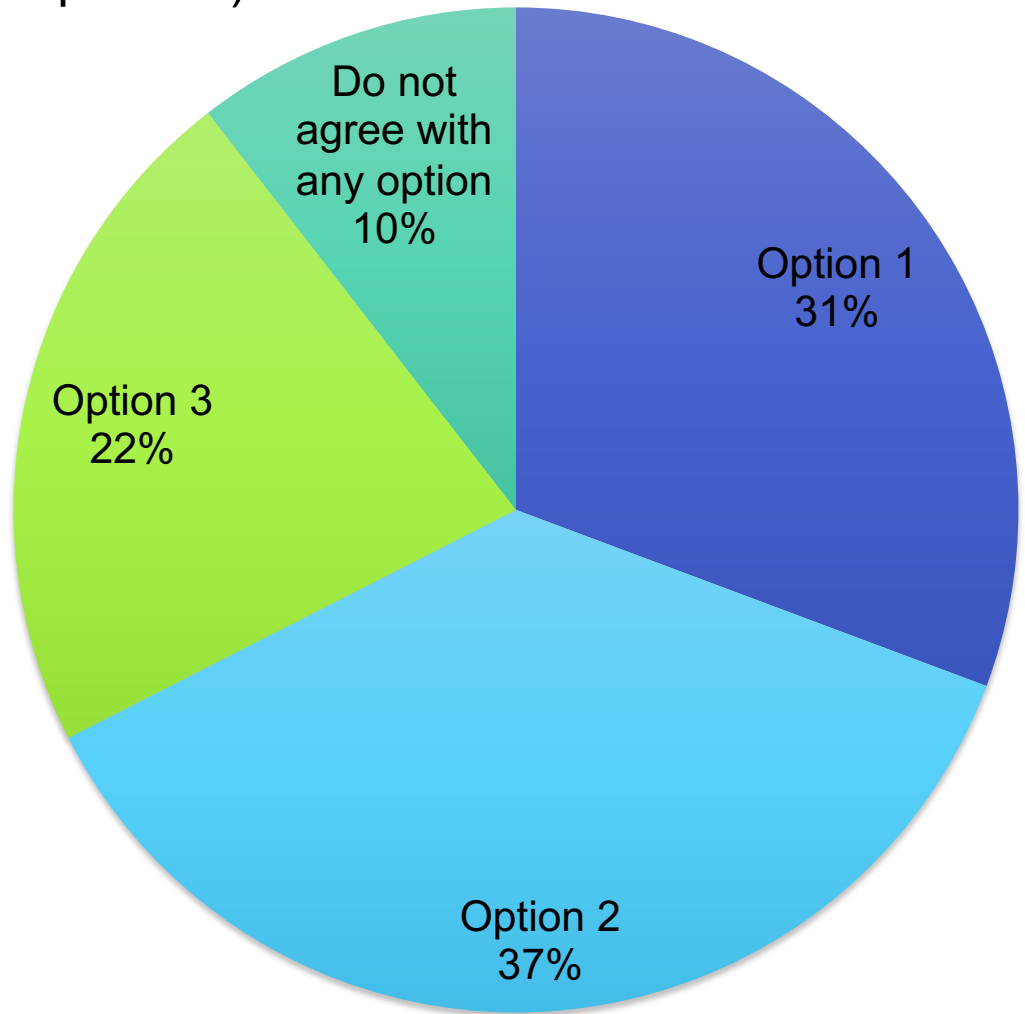
# STATION LOCATION OPTIONS

Presented to the community in a poll conducted between July 23 and July 31, 2020



# PUBLIC POLL RESULTS

Which options for Bluebikes station locations do you prefer? (515 total responses)



# PUBLIC POLL RESULTS

Option 2:  
highest number  
of public votes



# PUBLIC POLL RESULTS

Option 2:  
adjusted station  
locations based  
on preferred  
public option and  
specific site  
conditions





# STATION LOCATIONS FOR DISCUSSION AND APPROVAL





**Proposed Bluebikes  
Station (on street)**

# STATION #1: RAILROAD LOT @ MINUTEMAN BIKEWAY

- Requires removal of two parking spaces in railroad lot
- Bikes would face sidewalk side for renting
- Right off Minuteman Bikeway, near Library and Town Hall





**War  
Memorial**

**Proposed Bluebikes  
Station (on street)**

## STATION #2: MASS AVE @ BROADWAY

- Requires removal of two parking spaces on Mass Ave
- Bikes would face sidewalk side for renting
- Close to Broadway Plaza





**Proposed Bluebikes Station (on street)**

# STATION #3: MASS AVE @ GRAFTON ST

- Proposed in place of Capitol Square location
- Requires removal of three parking spaces, possibly four
- Alternative location: across the street in parallel spaces

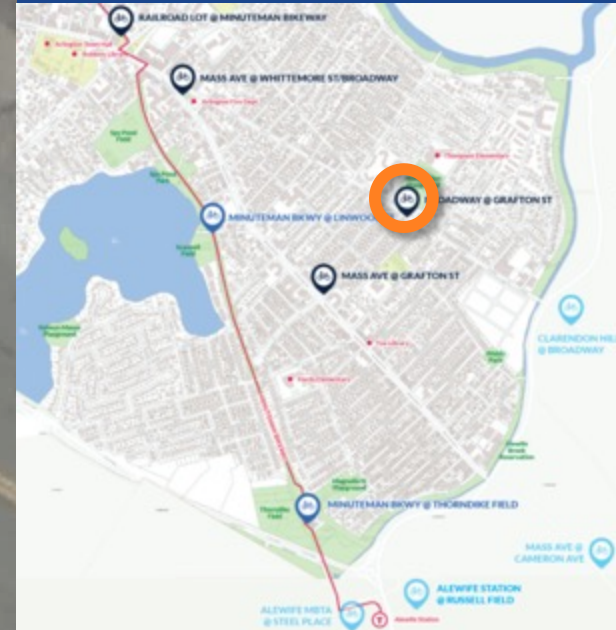


# STATION #4: BROADWAY @ GRAFTON ST

- Requires removal of two parking spaces on Broadway in front of 108 Broadway
- Alternative location: across the street in front of the bank

East Cambridge  
Savings Bank

Proposed Bluebikes  
Station (on street)





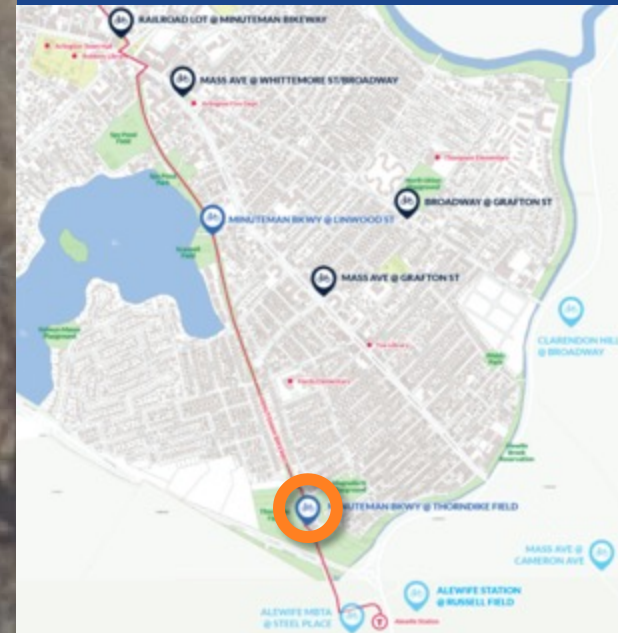
**STATION LOCATIONS FOR  
DISCUSSION AND APPROVAL AT NEXT  
BOARD MEETING PENDING FURTHER  
REVIEW**

# THORNDIKE FIELD @ MINUTEMAN BIKEWAY

- Requires approval/ concurrence from MBTA
- To be sited outside of primary Bikeway path
- Adequate ADA sidewalk width maintained for passing

**Proposed Bluebikes  
Station (on sidewalk,  
off main path)**

**Thorndike  
Dog Park**



Spy Pond  
Park

Proposed Bluebikes  
Station (on street)

Linwood St



# LINWOOD ST @ MINUTEMAN BIKEWAY

- Requires removal of two parking spaces on Linwood St
- Close to Bikeway, Spy Pond Park
- Linwood St would be narrowed to ~18'
- Considering concrete pad in grass instead of on street

