

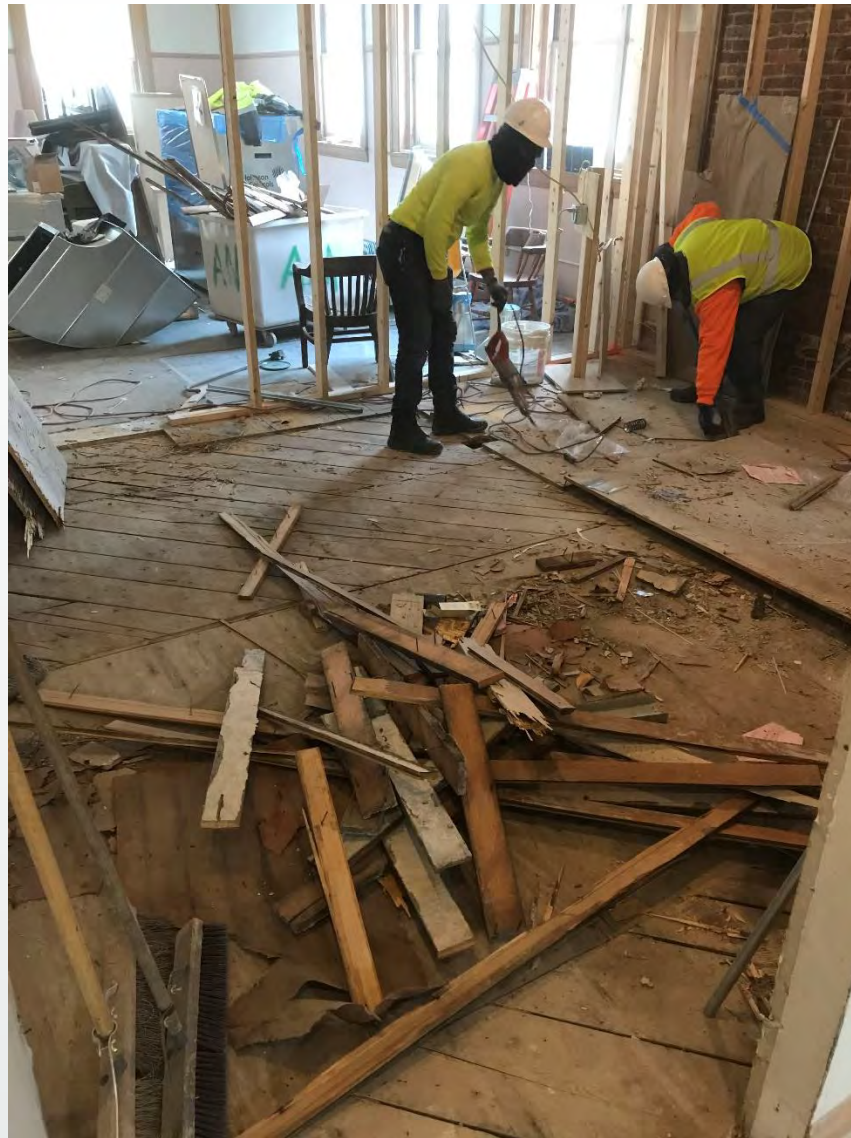
# Arlington Central School Senior Center / HHS Renovation

Progress Photo-documentation

1-5-21 PTBC Meeting



Repaired joists at raised floor at new switchgear in mechanical room



Removal of existing wood flooring to deck on 1<sup>st</sup> floor



Removal of rejected east entry concrete pad



Second pour of new concrete pad at east entry



Ductwork on 1<sup>st</sup> Floor



Rigging steel beam for operable partition through 1<sup>st</sup> Floor window.



Rigging steel beam for operable partition through 1<sup>st</sup> Floor window.





Operable partition track installation



Operable partition track on 1<sup>st</sup> Floor



Plywood underlayment at removed wood flooring at 1<sup>st</sup> Floor



Demolition at former cooling tower pad.



Demolition at north entry concrete walkway area



Test pit to uncover secondary wiring ductbank at new north entry canopy



**Test pit to uncover secondary wiring ductbank at new north entry canopy**



Existing downspout drainage piping at new north entry canopy