

DOCUMENT 009101

ADDENDUM NO. 1

DATE: FEBRUARY, 9, 2021
TO: PROSPECTIVE BIDDERS
FROM: CROWLEY COTTRELL LANDSCAPE ARCHITECTURE, LLC
171 MILK ST, FL2
BOSTON, MA 02109

ADDENDUM NO. 1

This addendum modifies, amends and supplements designated parts of the Bid Documents, dated January 28, 2021, for the subject project, and is hereby made a part thereof by reference and shall be as binding as though inserted in its entirety in the locations designated herein. Where any original item called for in the Project Manual or indicated on the Drawings is supplemented hereby, the supplemental requirements shall be considered as added thereto. Where any original item is amended, voided, or superseded hereby, the other provisions of such items not specifically amended, voided, or superseded shall remain in effect.

No claim for additional compensation because of lack of knowledge of the contents of this Addendum will be considered. Except as the Bid Documents are modified by this and other numbered Addenda, no representation by the Landscape Architect or others may be taken as modifying the Contract documents for the purpose of bidding.

The number of this and all other Addenda shall be acknowledged on the Proposal.

This Addendum, number 1 consists of:

PROJECT MANUAL

Please make the following revisions to the project manual as indicated; a full project manual book is not being reissued. Selected revised sections are attached.

1. In the INVITATION TO BID replace “The contract duration for the Base Bid is 120 consecutive days” with “The contract duration for the Base Bid is 150 consecutive days.”
2. In the INSTRUCTIONS TO BIDDERS replace “on or before September 30, 2016” with “on or before November 1, 2021”

QUESTIONS FROM BIDDERS

3. Q: Will mockups be required for the exposed aggregate concrete?
A: Yes, mockups are required. Attached is a photograph (Fig. 1) of a pad of exposed aggregate concrete located at the Academy St. Entrance to Arlington Town Hall, which can be used as a general reference for the desired effect at Whittemore Park.
4. Q: Does the town want to salvage the granite piers removed from the site?
A: The Town of Arlington does not want to salvage any of the granite piers removed from site. Any granite piers that are removed and not relocated on site as per drawings on L-101 and L-200 are to be disposed of at the contractor’s discretion.

OTHER

5. As discussed a pre-bid walkthrough, see attached plan (Fig. 2) showing location of three existing trees on site to be removed by Town of Arlington. The town will remove these trees and grind stumps prior to the commencement of work, and the removal of these trees is not part of the scope of work.



Fig. 1: Image showing appearance of exposed aggregate concrete pad at Academy St. Entrance to Arlington Town Hall.

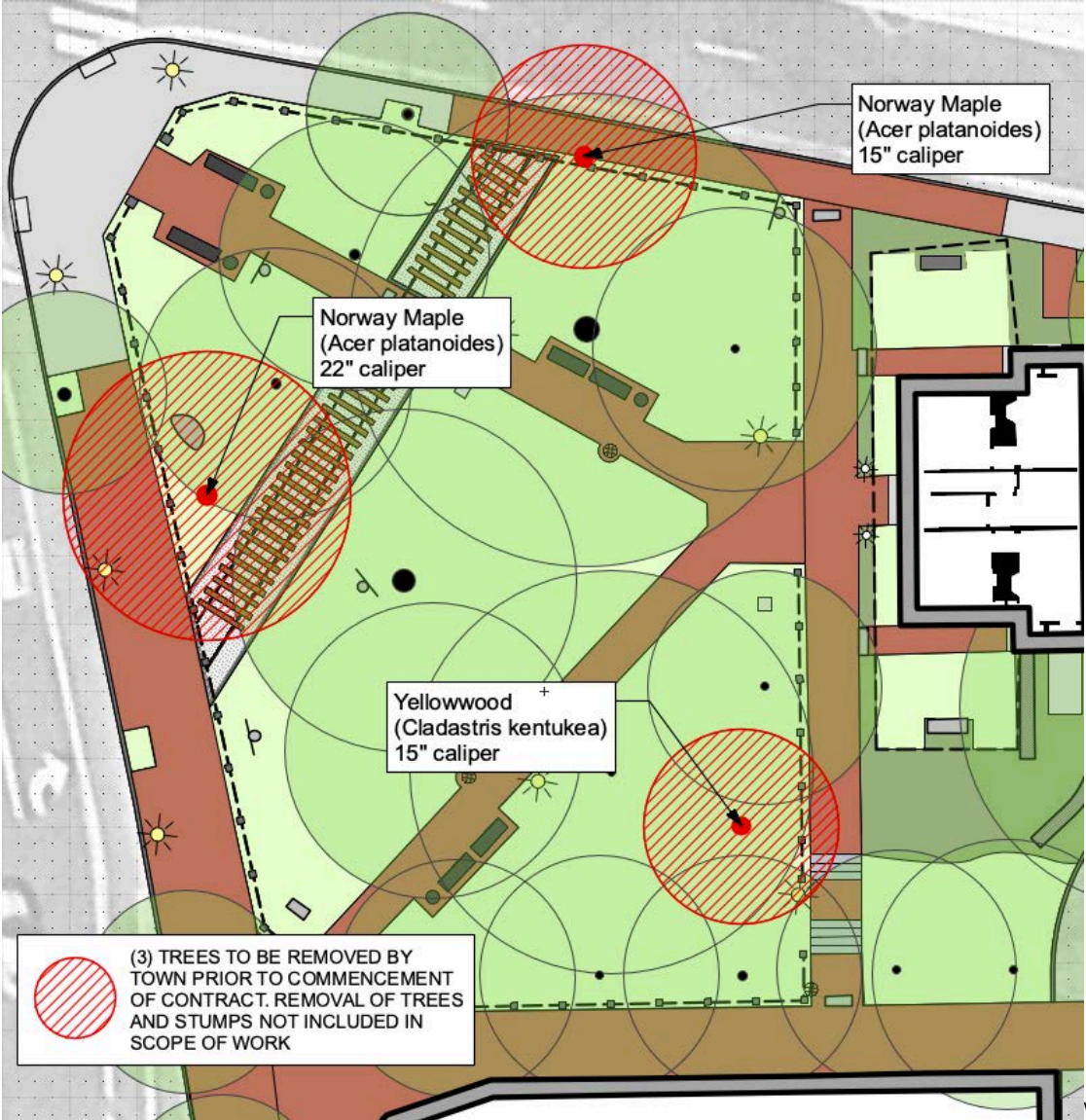


Fig. 2 Location of Trees to be Removed By Town.