

1165R Massachusetts Avenue  
Ch. 40B ZBA Submission

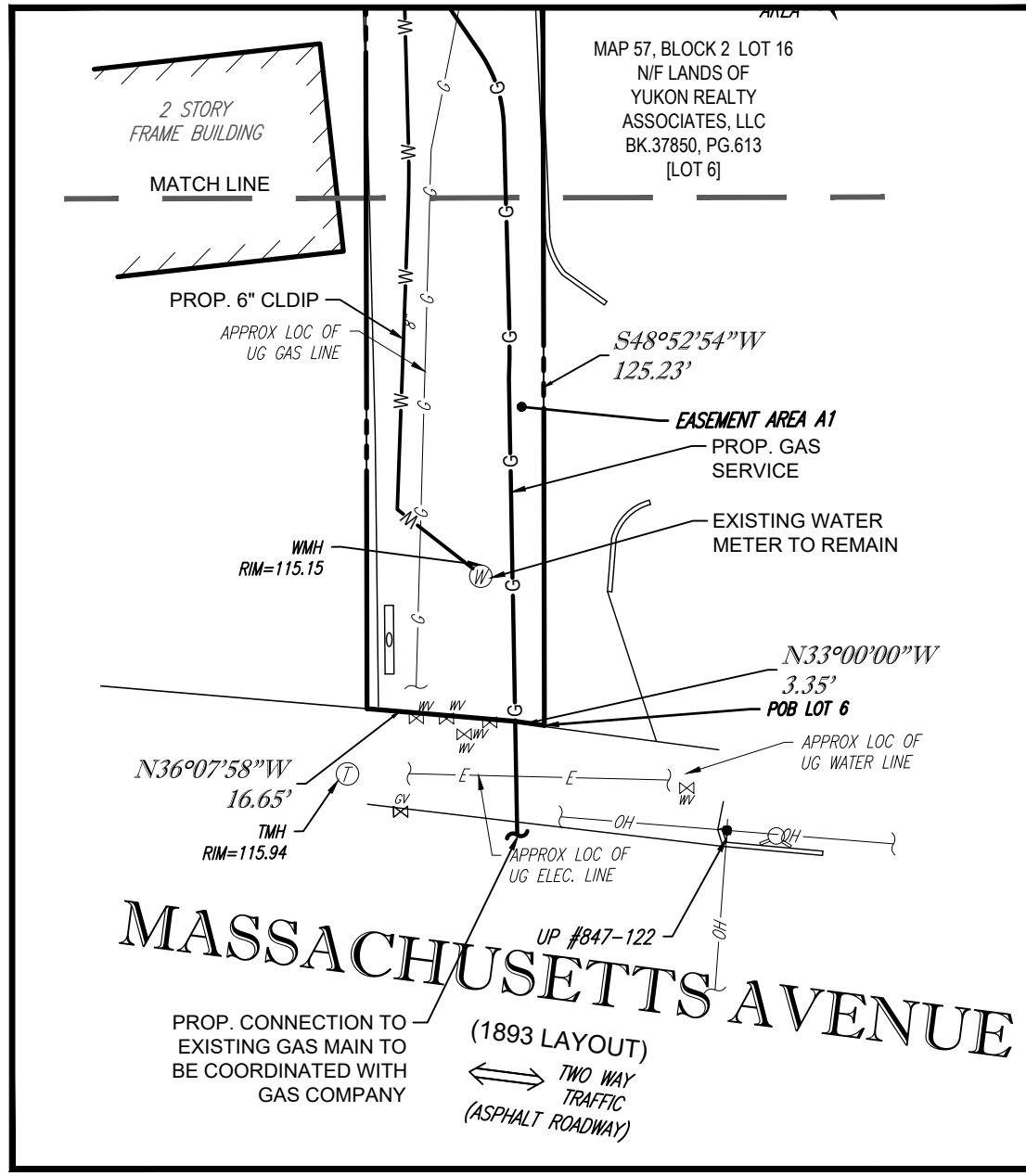
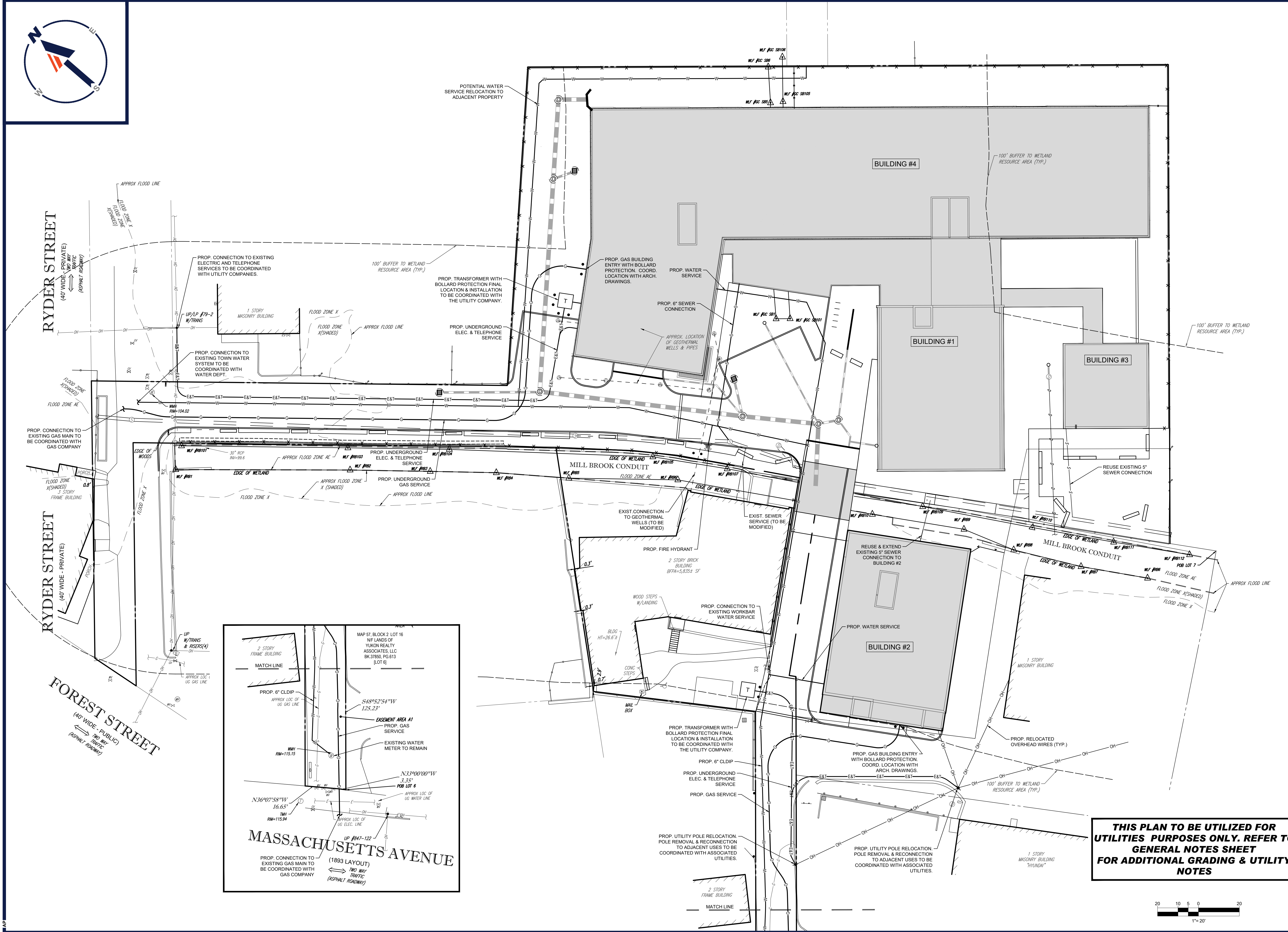
### Section 3.2.9 Utility Plan

Please see the enclosed C-501 Utility Plan, prepared by Bohler Engineering, dated July 15, 2020.

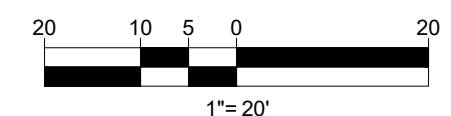
1165R Massachusetts Avenue  
Ch. 40B ZBA Submission

### Section 3.2.9 Utility Plan

Please see the enclosed C-501 Utility Plan, prepared by Bohler Engineering, dated July 15, 2020.



**THIS PLAN TO BE UTILIZED FOR UTILITIES PURPOSES ONLY. REFER TO GENERAL NOTES SHEET FOR ADDITIONAL GRADING & UTILITY NOTES**



**BOHLER**  
 SITE CIVIL AND CONSULTING ENGINEERING  
 PROGRAM MANAGEMENT  
 LANDSCAPE ARCHITECTURE  
 SUSTAINABLE DESIGN  
 PERMITTING SERVICES  
 TRANSPORTATION SERVICES

**REVISIONS**

REV	DATE	COMMENT	CHECKED BY	DRAWN BY
1	3/10/20	REVISED BUILDING 2 & GRADING	BFB	JMJ
2	06/15/20	SITE PLAN & GRADING	AWP	JMJ
3	07/15/20	CONSERVATION COMMISSION	AWP	JMJ

**811**  
 Know what's below.  
 Call before you dig.  
 ALWAYS CALL 811  
 It's fast. It's free. It's the law.

**ISSUED FOR PERMIT**

PROJECT No.: W191330  
 DRAWN BY: AWP  
 CHECKED BY: JMJ  
 DATE: 02/17/2020  
 CAD ID: W191330-CV1-3

**PROPOSED SITE PLAN DOCUMENTS**  
 FOR  
**1165R MASS MA PROPERTY LLC**  
 PROPOSED RESIDENTIAL DEVELOPMENT  
 1165R MASSACHUSETTS AVE.  
 MIDDLESEX COUNTY  
 TOWN OF ARLINGTON, MA  
 MAP #57, BLOCK #2, LOT #10B  
 AND PART OF LOT #15

**BOHLER**  
 352 TURNPIKE ROAD  
 SOUTHBOROUGH, MA 01772  
 Phone: (508) 480-9900  
 Fax: (508) 480-9080  
 www.BohlerEngineering.com

**J.M. JOHNSON**  
 PROFESSIONAL ENGINEER  
 MASSACHUSETTS LICENSE No. 45950

SHEET TITLE:  
**UTILITY PLAN**  
 SHEET NUMBER:  
**C-501**  
 REVISION 3 - 07/15/20

P:\191330\DRAWINGS\PLAN SET\191330-CV1-3.dwg - LAYOUT: C-491-LITL