



**TOWN OF ARLINGTON**  
**DEPARTMENT OF PUBLIC WORKS**  
51 GROVE STREET  
ARLINGTON, MA 02476

## **- CONSTRUCTION NOTICE -**

The Town of Arlington, through its contractor D&R Paving will commence Road Rehabilitation work May 19, 2021. Work will take place on the following Streets;

- Bates Road
- Adams Street
- Allen Street
- Raleigh Street
- Andrew Street
- Oakland Ave. (Park Ave–Wachusett Ave.)

Work will begin in the Bates Road Area and proceed to the other streets. Road work may include pavement milling, adjustment of utility structures, new and/or adjusted curb/berm, replacement of poor condition sidewalks and driveway aprons, and road paving.

As the work progresses project areas can be identified by the presence of paint marks on the road, construction barrels, cones and equipment on the street. No Parking Zones will be posted as needed to provide room for equipment and construction activity. The Police Department will provide Traffic Safety Detail Officers to assist with traffic management, increase work zone safety, and enforce parking restrictions. The road will remain accessible.

During construction, access to driveways, certain road sections and portions of the sidewalk may be closed on a temporary basis. Drivers, pedestrians and residents are asked to follow posted instructions as applicable. Construction Notices will be distributed to abutters on the affected streets prior to work commencing and will provide details and Frequently Asked Questions for residents.

Please review the following frequently asked questions for additional information. If you have any further questions about the project, please contact the Arlington Engineering Division at (781) 316-3320, or [Engineering@town.arlington.ma.us](mailto:Engineering@town.arlington.ma.us). The Engineering Division will provide occasional updates and pertinent information as work progresses. Thank you for your cooperation while we continue to improve Arlington's roadways.

# Frequently Asked Questions

---

## **"Can I still access my house during construction?"**

Access in and out of your house will be maintained throughout construction. The Contractor and Engineering Division will work to accommodate any needs or requests.

## **"While work is performed at my driveway, where can I park?"**

Some residents may have a temporary restriction on parking in their driveway and will be able to park overnight on nearby side streets without being ticketed. The contractor will provide a notice and coordinate with residents as needed. Should any issues arise, please contact the Engineering Division and we will work with you to resolve the issue.

## **"What will happen to my driveway?" or "Why is my driveway not completed?"**

Driveways may be "cut back" in order to transition with the new surface. Driveways may be cut back a number of feet and re-surfaced with the same material that was removed. If asphalt pavement, the driveway will be paved in two layers (a base layer and a top layer).

## **"I have a plant/landscaping/walkway/object on the edge of my property/in the grass strip. What will happen to it?"**

The Town recommends moving any items that are within the public right of way prior to construction operations. Objects remaining in the Town right of way (from the back of the sidewalk to the street) may be removed and placed on the property, but any damage will not be the responsibility of the Town or its contractor. In addition, please inform the contractor and/or the Engineering Division of any sensitive, obscured, or otherwise important items such as plantings, wires, furnishings, irrigation lines, sprinkler heads and decorations close to the area of construction that may be impacted by construction activities.

## **"What if I have a retaining wall at the back of the sidewalk?"**

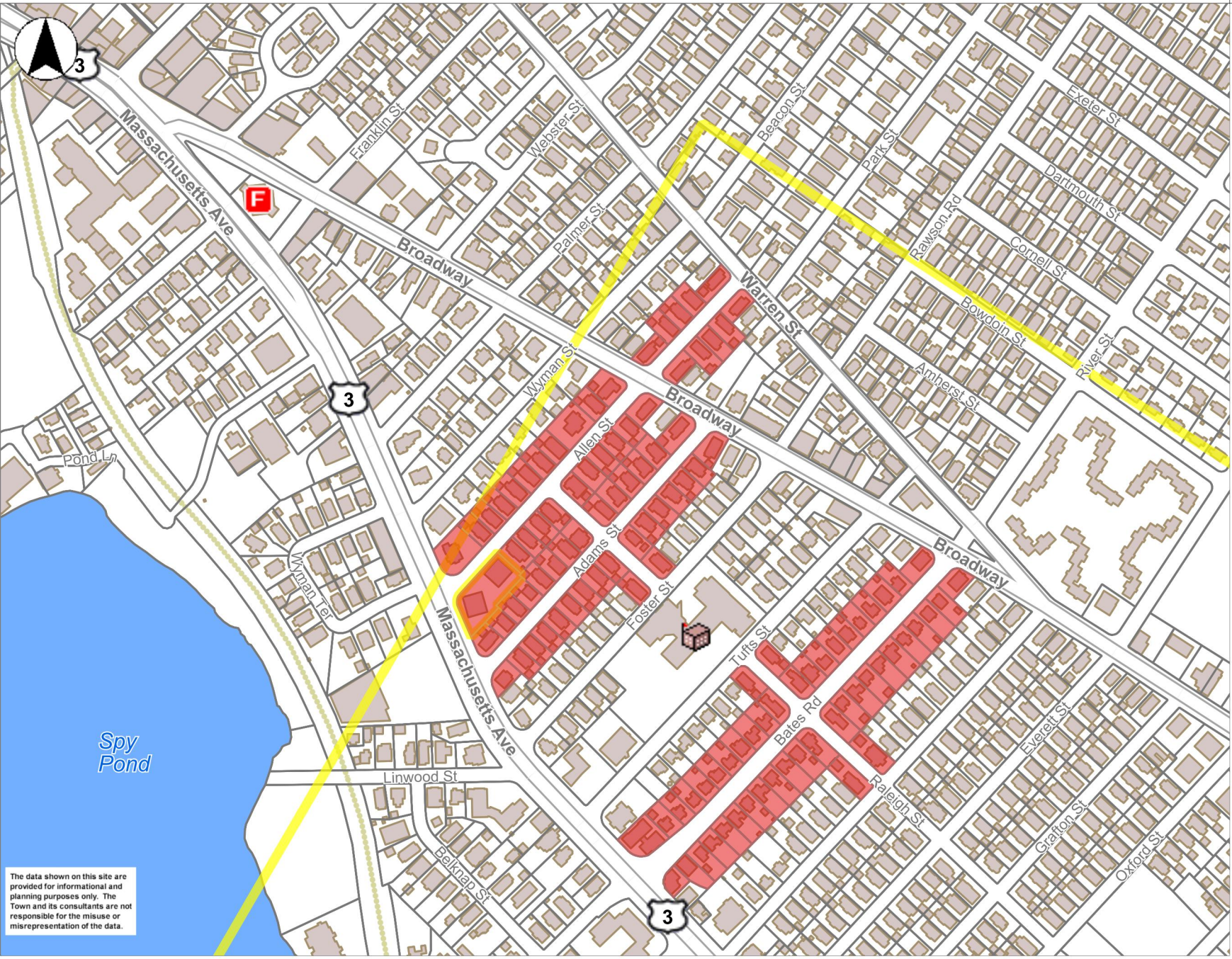
If a retaining wall is in good condition work can generally proceed easily. Minor efforts may be made by the contractor to patch or make adjustments to meet the sidewalk if needed. If a retaining wall is in poor condition, work may not be able to be performed due to risk of collapse. In instances such as this the contractor may decide not to perform the work due to potential liabilities unless the wall is repaired or a waiver is signed by the owner to proceed.

## **"Can I apply salt to the sidewalk in the winter time?"**

Newly poured concrete is more susceptible to freeze/thaw affects in the winter time. De-icing products promote melting during the day and freezing temperatures can return overnight. The repetitive cycle can result in "spalling" of the sidewalk surface. During the first winter salt & de-icing chemicals should be used sparingly or swept up after ice has been removed to facilitate curing of concrete after the first season.



- Poles (All Pole Uses)**
  - Lamp Pole
  - Utility Pole
  - Utility Pole with Street Light
  - Pedestrian Signal Pole
  - Traffic Signal Pole
  - Engineering - Drainage Pole
- Places by Category**
  - Police Station
  - Fire Station
  - School
  - Library
  - Public Works
- Parcels**
- Buildings**
- Pavement Markings**
- MA Highways**
  - Interstate
  - US Highway
  - Numbered Routes
- Town Boundary**
- Abutting Towns**
- Cemetery - Roads**
  - Road1
  - Road2
  - Road3
  - Road4
- Impervious Surface - For Building Footprint**
  - Street
  - Sidewalk
  - Street Island
  - Driveway
  - Parking Lot
  - Bike Path
- Roads - For Large Scale (for Planning)**
- Roads - For Small Scale (for Design)**
  - Major Road
  - Local Road
- Master Plan Base Map - M**
- Water Line**
- Water Body**



The data shown on this site are provided for informational and planning purposes only. The Town and its consultants are not responsible for the misuse or misrepresentation of the data.

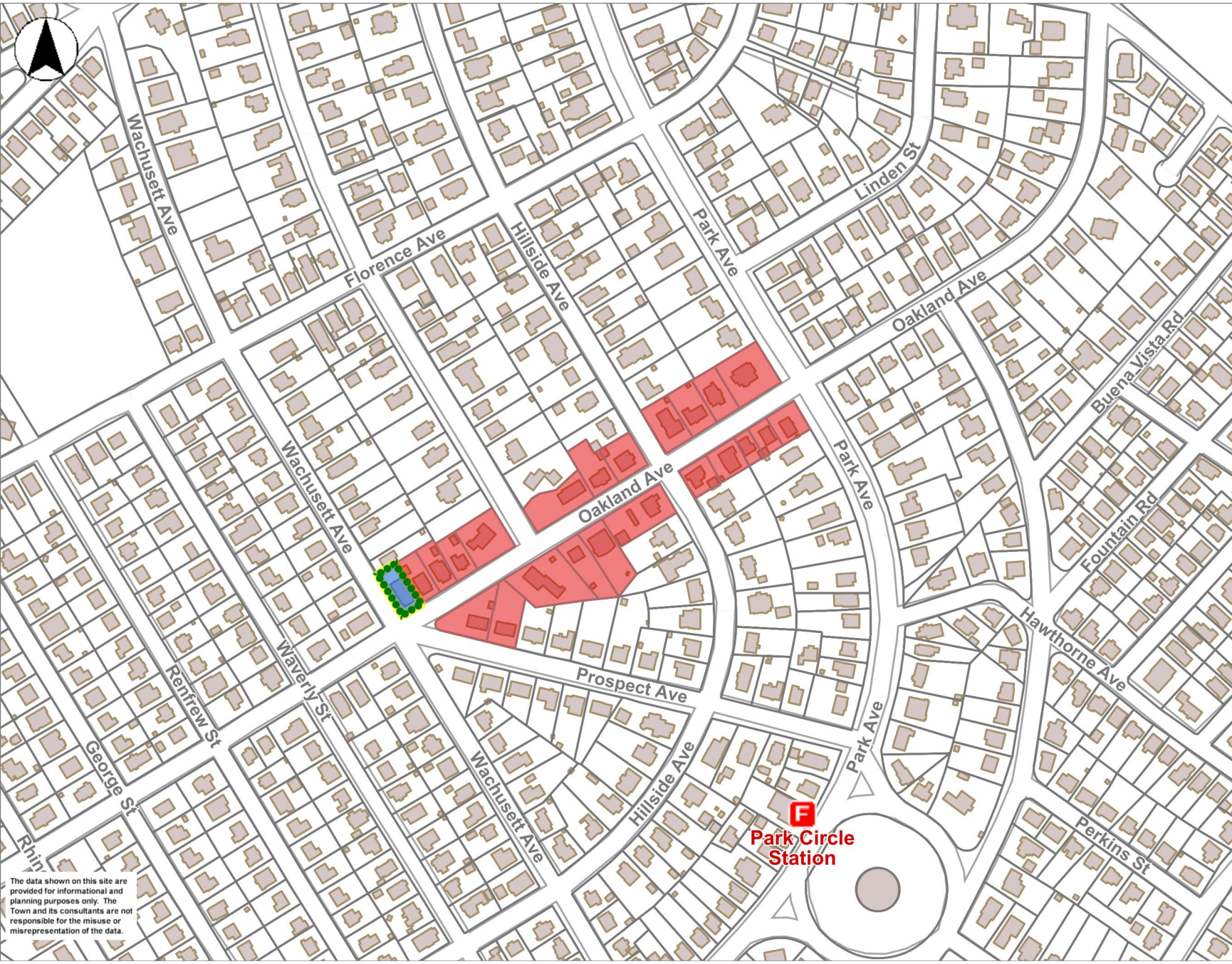
0 500 1000 ft

Printed on 05/14/2021 at 12:47 PM

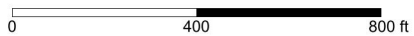
# Town of Arlington, MA



- Poles (All Pole Uses)
  - Lamp Pole
  - Utility Pole
  - Utility Pole with Street Light
  - Pedestrian Signal Pole
  - Traffic Signal Pole
  - Engineering - Drainage Pole
- Places by Category
  - Police Station
  - Fire Station
  - School
  - Library
  - Public Works
- Parcels
- Buildings
- Pavement Markings
- MA Highways
  - Interstate
  - US Highway
  - Numbered Routes
- Town Boundary
- Abutting Towns
- Cemetery - Roads
  - Road1
  - Road2
  - Road3
  - Road4
- Impervious Surface - For Buildings
  - Street
  - Sidewalk
  - Street Island
  - Driveway
  - Parking Lot
  - Bike Path
- Roads - For Large Scale (feet)
- Roads - For Small Scale (feet)
- Local Road
- Master Plan Base Map - M
- Water Line
- Water Body



The data shown on this site are provided for informational and planning purposes only. The Town and its consultants are not responsible for the misuse or misrepresentation of the data.



Printed on 05/14/2021 at 01:12 PM

# Town of Arlington, MA