



Mass Ave/Appleton Design Review Committee

04-15-21

Daniel Amstutz, Town of Arlington
Department of Planning & Community
Development

Remote Meeting and Ground Rules

- Remote meeting script
- Confirm committee members are here
- Please use “Raise Hand” function to comment
- Start with committee members before public comments
- Recorded Meeting



Agenda

1. Welcome and Opening of Remote Meeting, including Ground Rules
2. Approval of Minutes of March 23, 2021
3. Updates: Committee Scope, Membership, Public Comments, and Follow-Up from Last Meeting
4. Summary of Committee and Public Feedback from Last Meeting
5. Continue Review of Initial Concepts and Build Consensus on Design Considerations for the Area
 - a. Potential Vote on Design Elements to Provide Direction to Green International
6. Discuss Next Steps and Set Next Committee Meeting Dates
7. Adjourn



Goal of this Meeting

- Come to a consensus on preferred design elements to give clear direction to Green International for additional short-term concept development



Update on Committee Scope

- At the June 15, 2020 Select Board meeting, Board approved expanded scope and added representation from Ottoson Middle School
- From the Select Board minutes:
 - “Mr. Chapdelaine stated that it was suggested that we include a representative from the Ottoson Middle School on the Committee. In terms of the committee scope it is recommended to look at the portion of the corridor that the Design Review Committee sees as most appropriate to effectuate the safety concerns. Mr. Chapdelaine stated that looking at the foot of the rocks where Lowell Street intersects with Mass Avenue and following down to where Mass Ave, Forest and Burton intersect and looking at the stretch of corridor in its entirety makes sense.
- New Committee member for Ottoson: Abbi Holt



Correspondence/Comments and Meeting Follow-up

- Received between 03-24-21 and 04-15-21:
 - Alex Frieden (Somerville resident)
 - Galen Mook (MassBike)
 - Lynette and James Cassel (14-16 Appleton Place)
 - Tom Tierney (15 Burton Street)
 - Tycho Nightingale (6 Appleton Place)
- Mass Ave/Appleton not on Complete Streets Prioritization Plan (neither is Mass Ave/Lowell and Mass Ave/Forest/Burton)
- Disability perspective – will reach out to Chair of Disability Commission
- Recent data collected by Green International – volumes, turning movements, speeds



Summary of Committee and Public Feedback from Last Meeting

- Reduce the number of conflicting vehicle movements by making Appleton Place one-way and prohibiting some left turn movements
- Reduce vehicle speed and reduce the time for motorists/bike/peds to cross through the intersection by tightening the intersection and providing clearly marked lanes
- Provide protection for pedestrians and bicyclists



Decision Points

- Appleton Place one-way/access
- Prohibiting certain turning movements
- Parking restrictions (Mass Ave, Appleton Place)
- Bicycle accommodation
- Signalization – existing signal vs. pedestrian-activated warning beacon
- Mass Ave/Lowell St and Mass Ave/Forest St/Burton St
- Others??

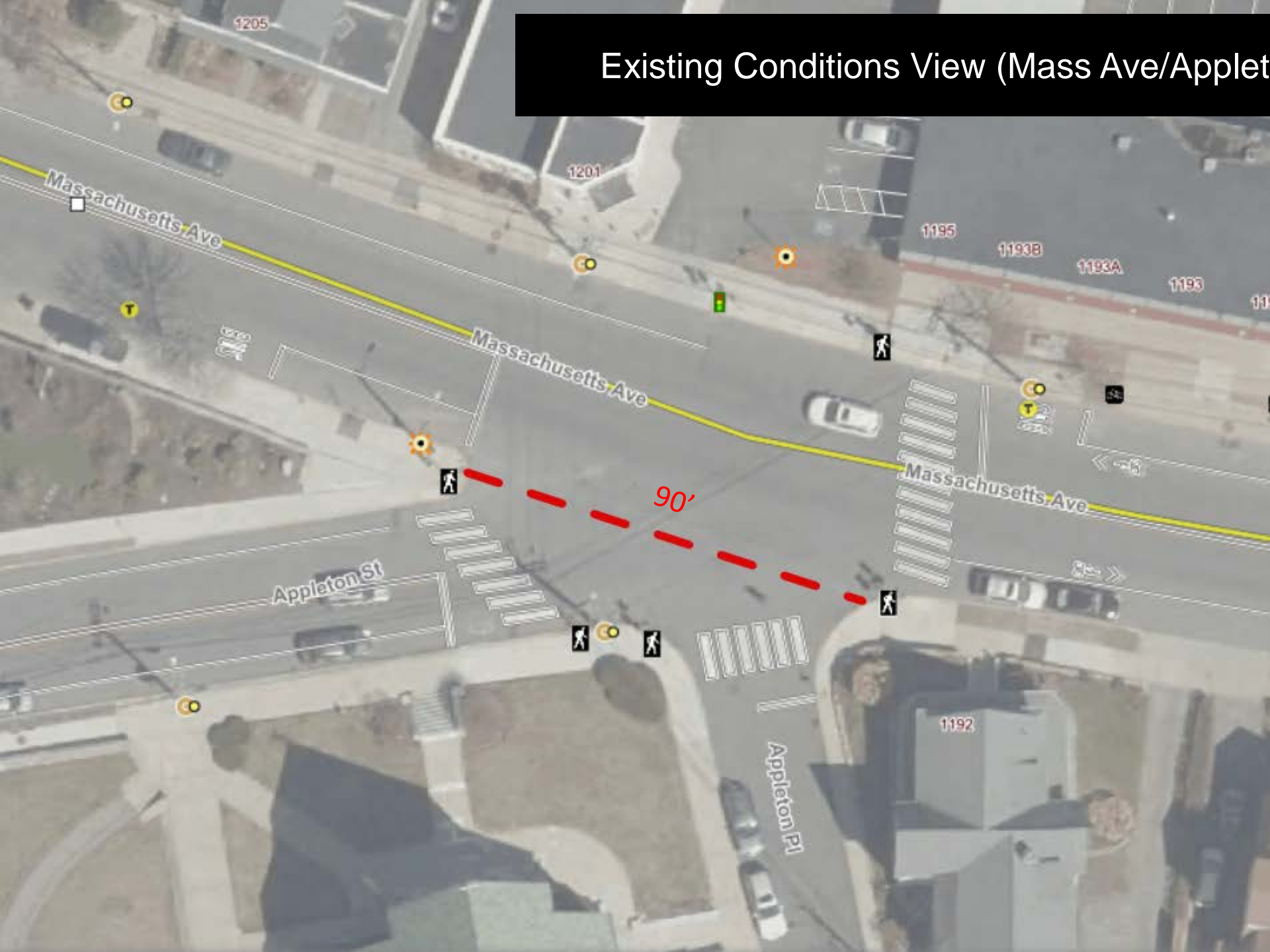
... And Public Engagement on Impacts

(If planned for short-term implementation)

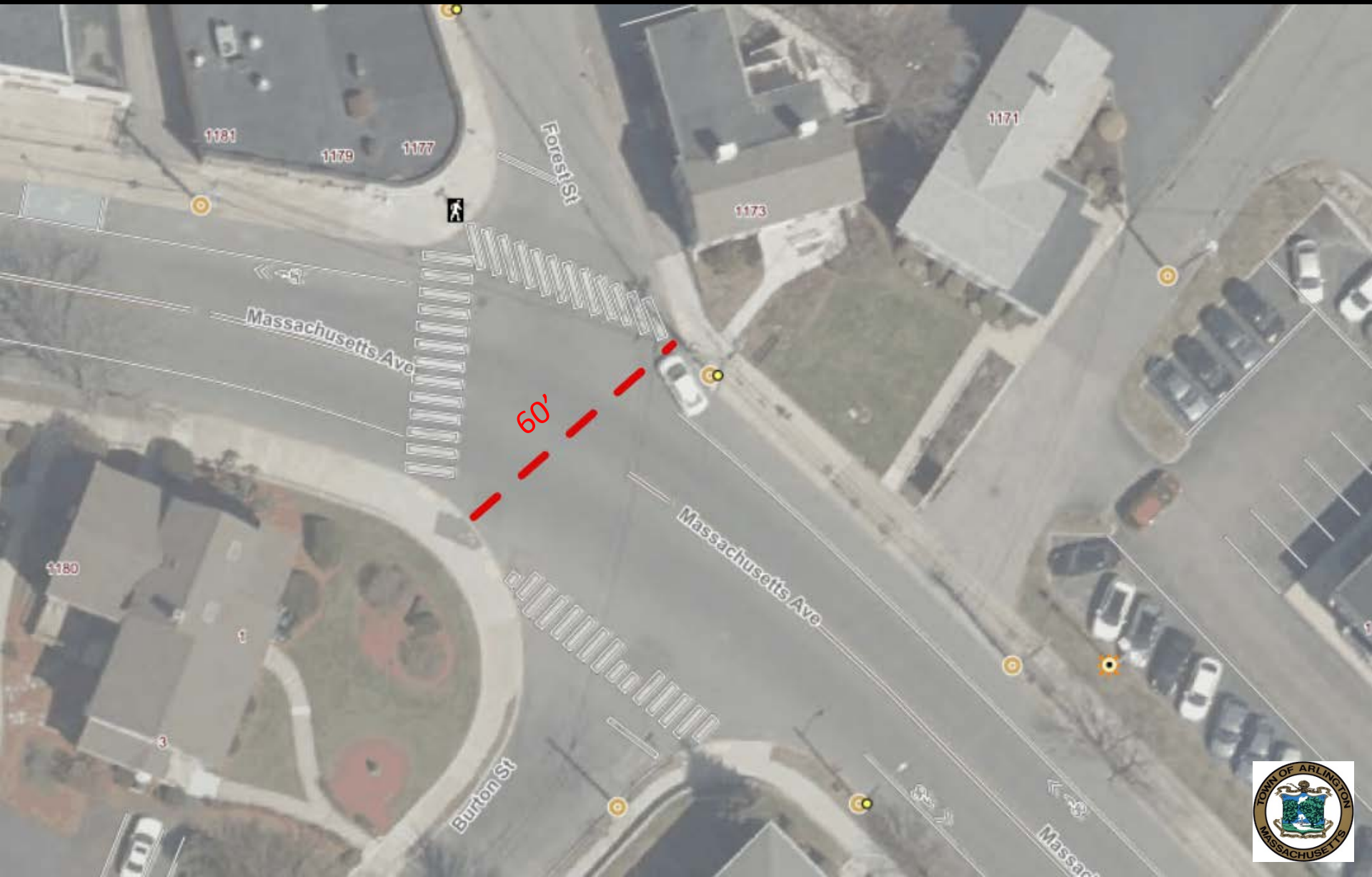
- Residents of Appleton Place (esp. Mass Ave to Burton)
- Businesses and residents of Mass Ave between Lowell St and Forest/Burton



Existing Conditions View (Mass Ave/Applet



Existing Conditions View (Mass Ave/Forest/Burton)



Existing Conditions View (Mass Ave/Lowell St)



Initial Concepts

- Five concepts posted
 - Short Term Improvements developed by Phil Goff
 - Short Term Improvements developed Neighborways Design
 - Redesign concept developed by Petru Sofio
 - Short Term Improvements Alternate 1 (Developed by Green International for the Town)
 - Short Term Improvements Alternate 2 (Developed by Green International for the Town)



SHORT-TERM Bicycle Safety Proposal at the Mass Ave/Appleton Intersection
 Arlington, MA
 by Phil Goff
 May 21, 2020



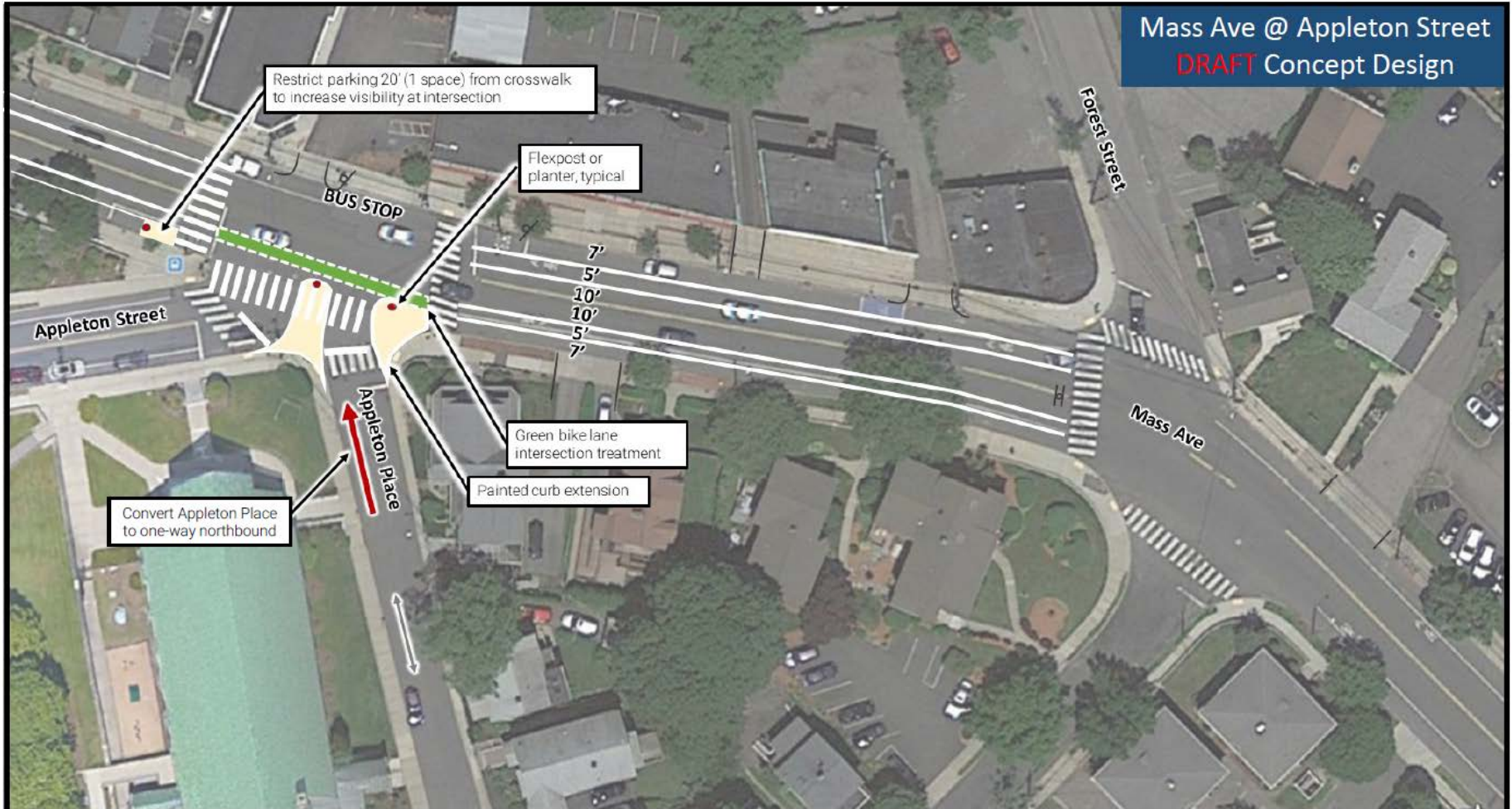
Current View Looking West



PROPOSED View Looking West



Mass Ave @ Appleton Street
DRAFT Concept Design



DRAFT / NOT FOR CONSTRUCTION

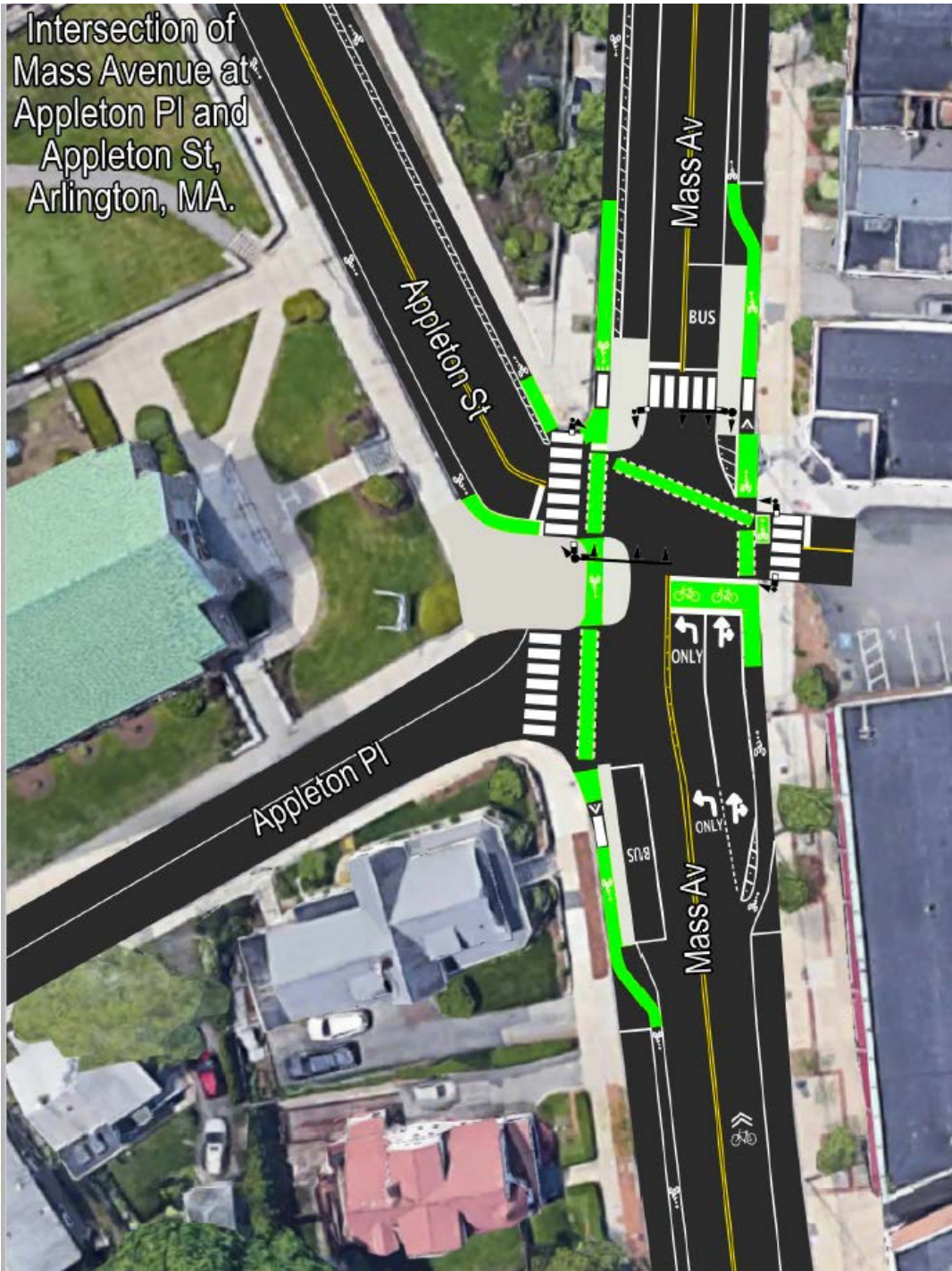
Not to scale

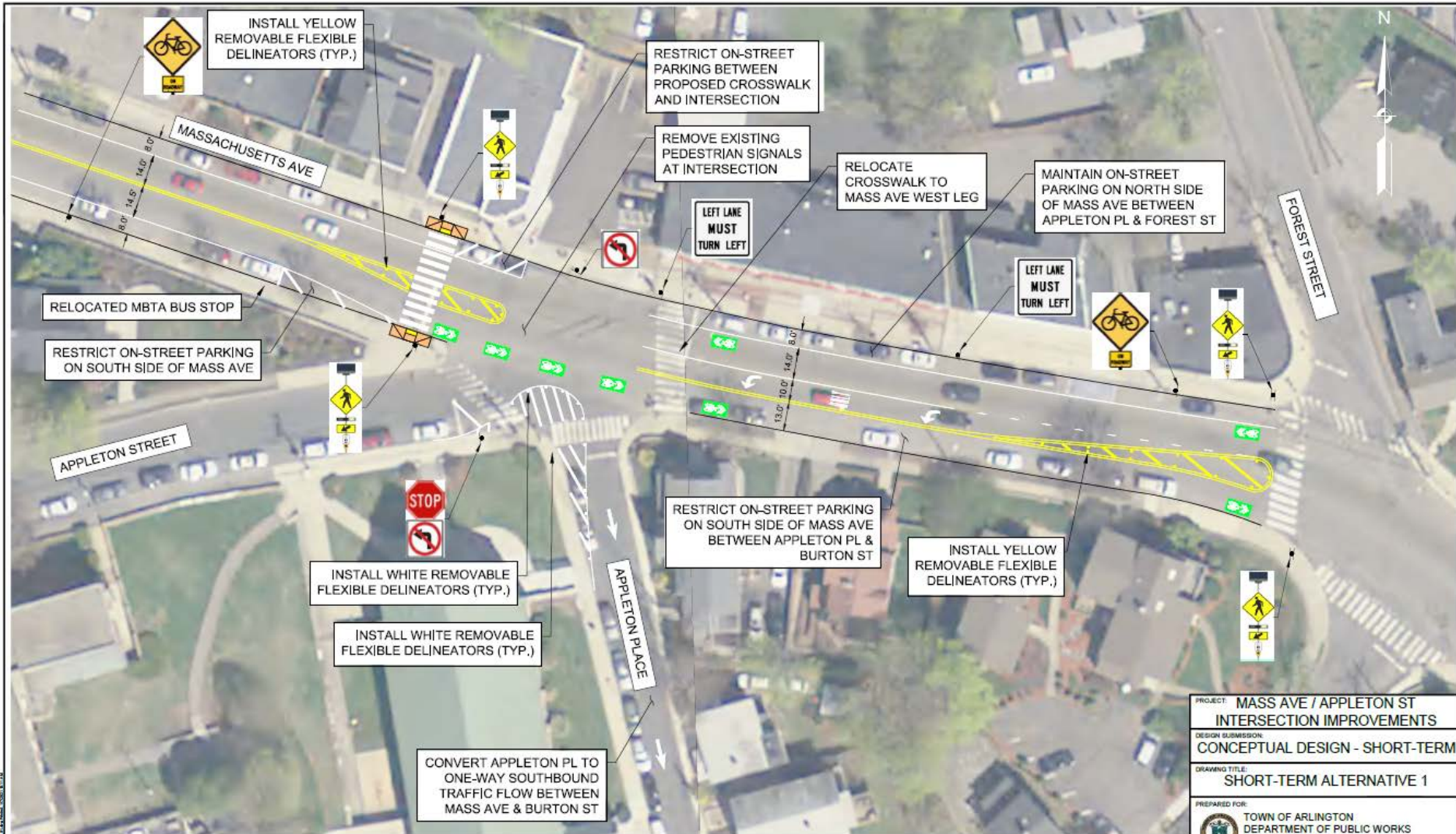
Notes:

- Measurements from google earth – need to field verify. Assumed 44' width curb to curb
- Consider / check truck restrictions on Appleton – need to verify turning radii in Autoturn with SU-30. recommend restricting WB-50s
- Consider painted curb extensions or mountable concrete (similar to Paul Revere Rd @ Mass Ave)
- Consider consolidating parking to one side of the street – see street mix cross sections.



Intersection of
Mass Avenue at
Appleton Pl and
Appleton St,
Arlington, MA.

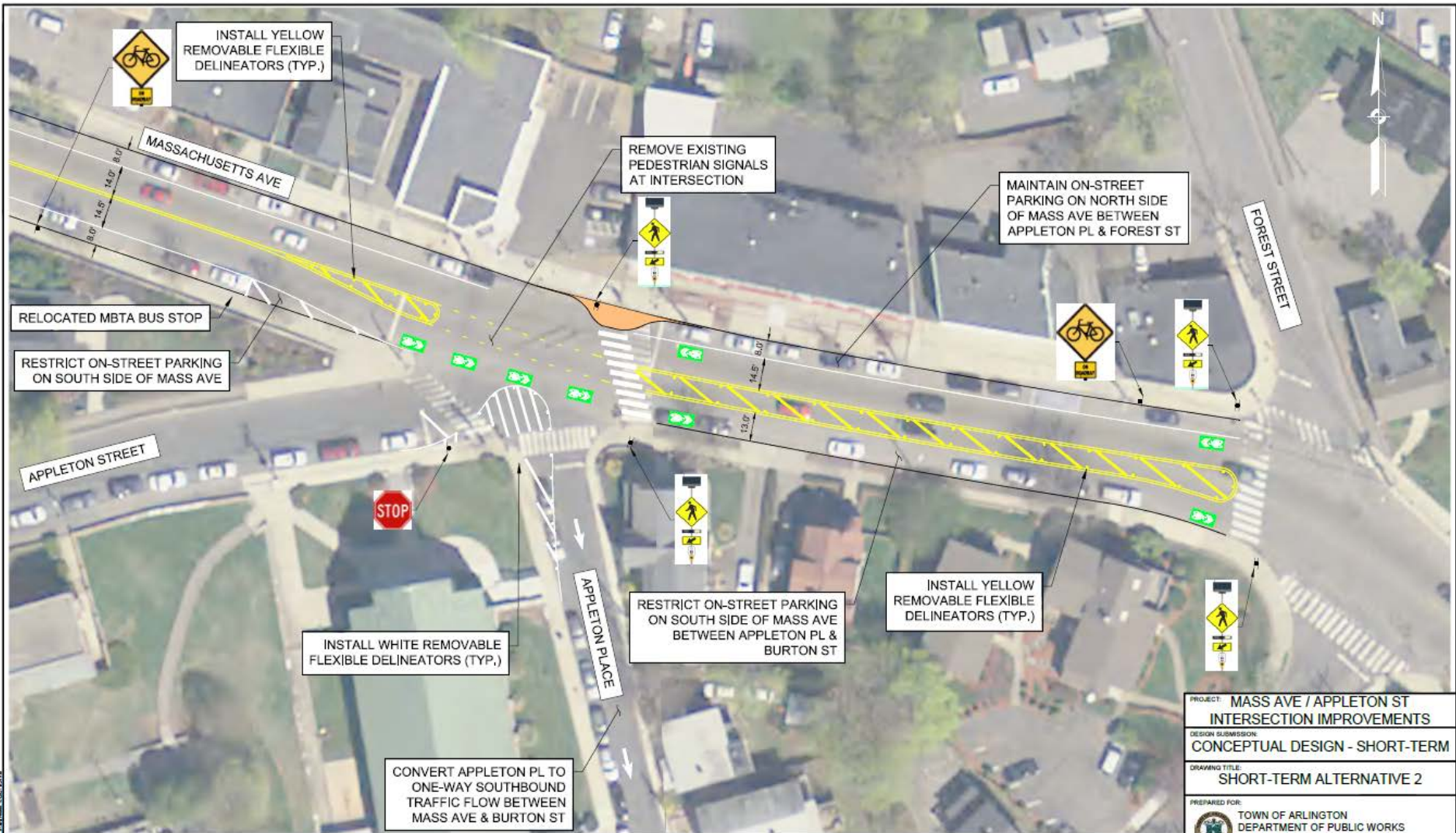




MASSACHUSETTS AVE / APPLETON STREET / APPLETON PLACE
SHORT-TERM INTERSECTION IMPROVEMENTS
ALTERNATIVE 1



PROJECT: MASS AVE / APPLETON ST INTERSECTION IMPROVEMENTS	
DESIGN SUBMISSION: CONCEPTUAL DESIGN - SHORT-TERM	
DRAWING TITLE: SHORT-TERM ALTERNATIVE 1	
PREPARED FOR: TOWN OF ARLINGTON DEPARTMENT OF PUBLIC WORKS 51 GROVE STREET ARLINGTON, MASSACHUSETTS	
PREPARED BY: GREEN INTERNATIONAL AFFILIATES, INC. TRANSPORTATION / STRUCTURAL / WATER RESOURCES / CIVIL/SITE 328 LITTLETON ROAD, SUITE 3 WESTFORD, MA 01086 978.823.0400 www.giaintl.com	
SCALE: AS NOTED	DESIGNED BY: JG
DATE: 11/09/2020	DRAWN BY: JG
PROJECT NO: 20107	CHECKED BY: VW
SHEET NO. 1 OF 2	



MASSACHUSETTS AVE / APPLETON STREET / APPLETON PLACE
SHORT-TERM INTERSECTION IMPROVEMENTS
ALTERNATIVE 2



SCALE: 1" = 40'

PROJECT: MASS AVE / APPLETON ST INTERSECTION IMPROVEMENTS	
DESIGN SUBMISSION: CONCEPTUAL DESIGN - SHORT-TERM	
DRAWING TITLE: SHORT-TERM ALTERNATIVE 2	
PREPARED FOR: TOWN OF ARLINGTON DEPARTMENT OF PUBLIC WORKS 51 GROVE STREET ARLINGTON, MASSACHUSETTS	
PREPARED BY: GREEN INTERNATIONAL AFFILIATES, INC. TRANSPORTATION STRUCTURAL WATER RESOURCES CIVIL/IRRE 250 LITTLETON ROAD, SUITE 3 WESTFORD, MA 01581 978.852.0482 www.greenintl.com	
SCALE: AS NOTED	DESIGNED BY: JG
DATE: 11/09/2020	DRAWN BY: JG
PROJECT NO: 20107	CHECKED BY: WW
	SHEET NO. 2 of 2

Pros and cons

- Appleton Place
 - One way northbound
 - One way southbound
- Left turns onto Appleton Street from Mass Ave
 - Reduce speeds in the traffic movement



Design Elements to Include

- Slow vehicles down on Mass Ave/through the intersection



Next Steps & Committee Meeting Dates

- Next Steps:
 - Identify elements that can be completed in the short term/on a trial basis as soon as possible
 - Provide guidance to Green International/DPW on design concept development
 - Green International revises short-term concepts for Design Review Committee, provides two alternates
 - Committee meets to review concepts and asks for further revisions or makes recommendation to Select Board
 - Recommendation to Select Board on short term-improvements
 - Town implements short-term improvements; Committee begins determining longer-term improvements and process
- Reschedule committee meeting for April 29
- Adjourn

