

1165R Massachusetts Avenue
Ch. 40B ZBA Submission

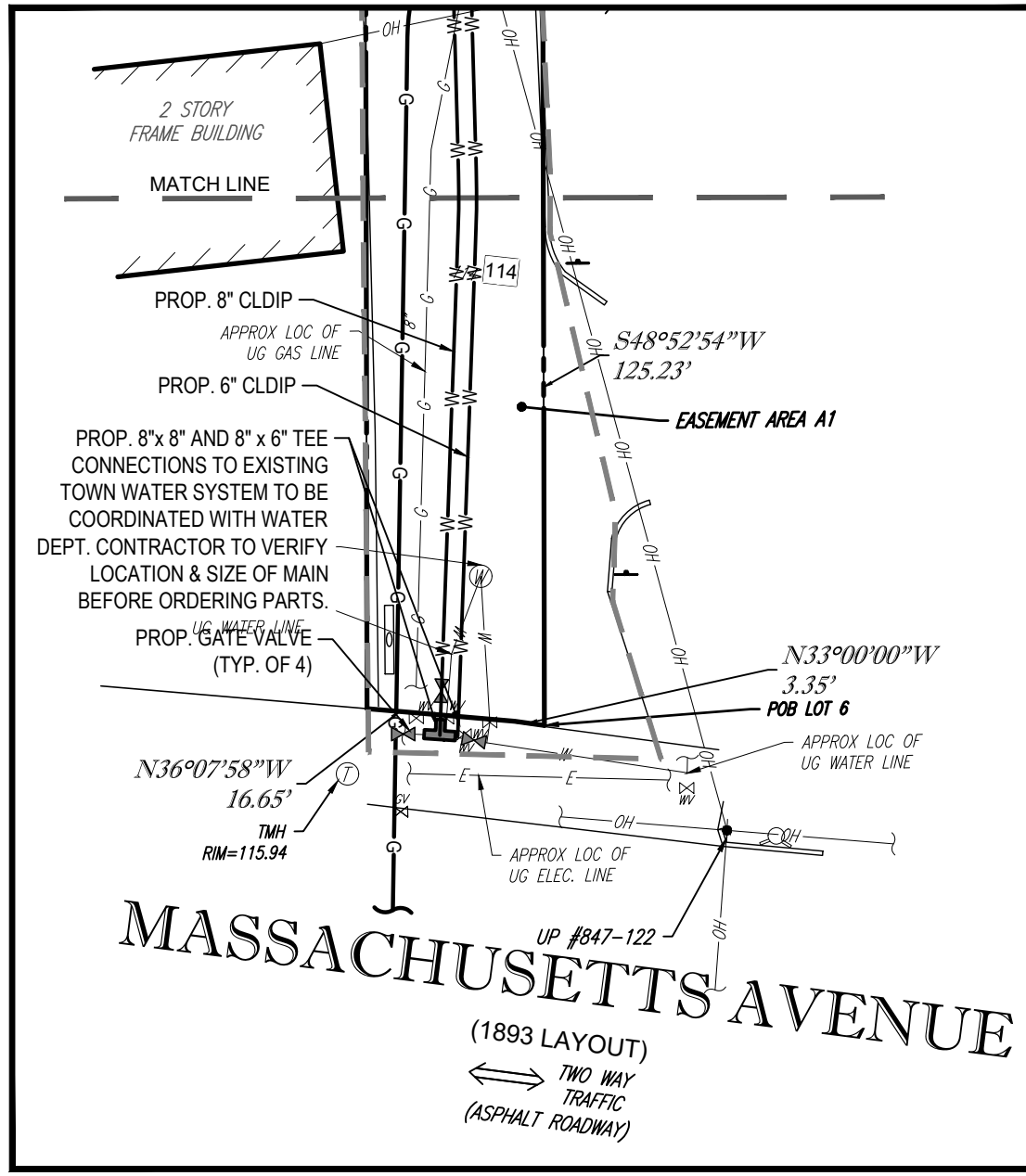
Section 3.2.9 Utility Plan

Please see the enclosed C-501 Utility Plan, prepared by Bohler Engineering, dated July 15, 2020 and REVISED May 26, 2021.

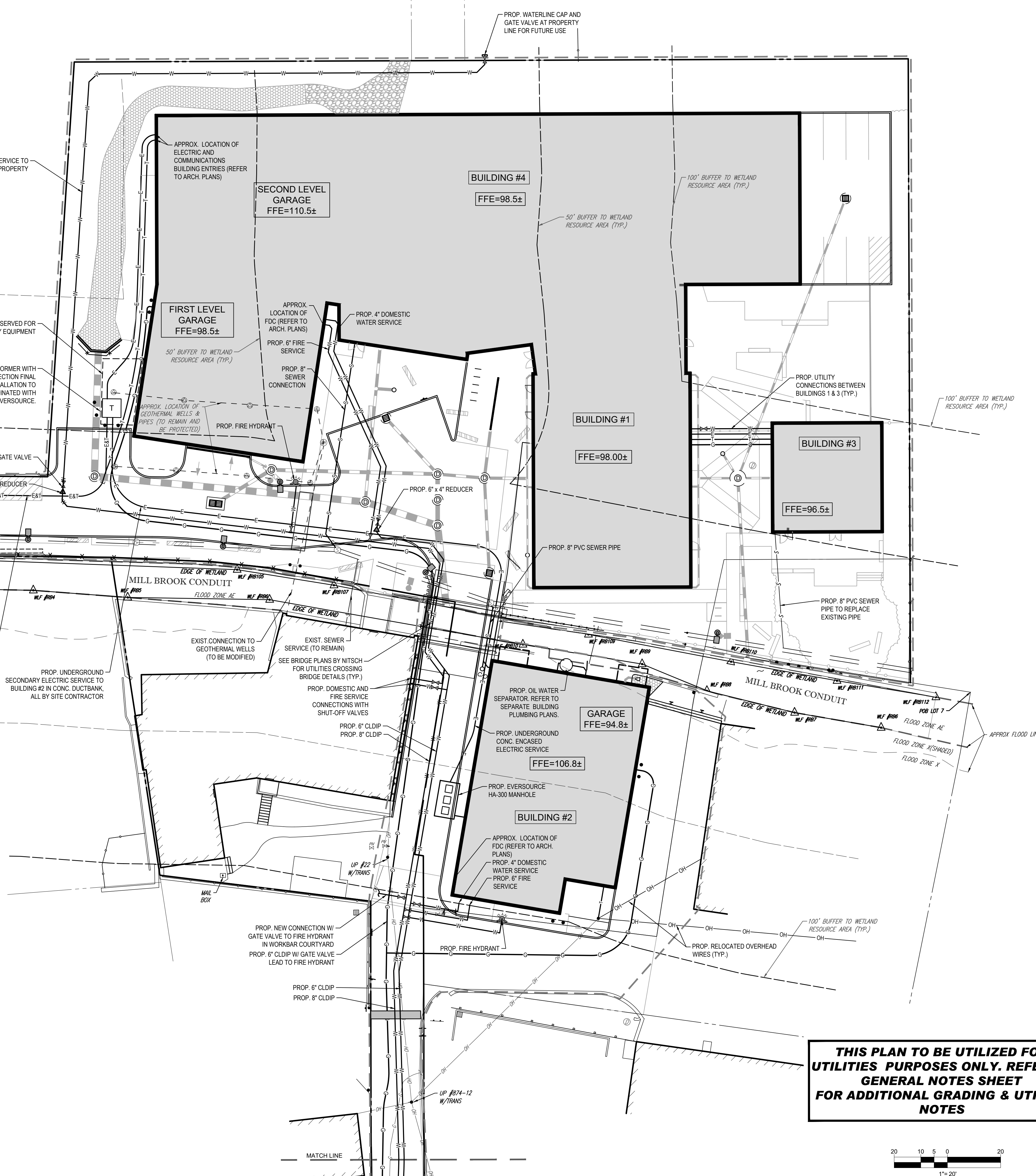


RYDER STREET
(40' WIDE - PRIVATE)
750 W/TRANS
(ASPHALT ROADWAY)

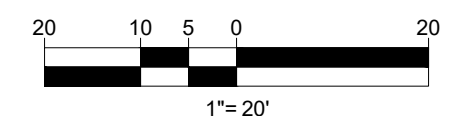
FOREST STREET
(40' WIDE - PUBLIC)
750 W/TRANS
(ASPHALT ROADWAY)



MASSACHUSETTS AVENUE
(1893 LAYOUT)
750 W/TRANS
(ASPHALT ROADWAY)



THIS PLAN TO BE UTILIZED FOR UTILITIES PURPOSES ONLY. REFER TO GENERAL NOTES SHEET FOR ADDITIONAL GRADING & UTILITY NOTES



BOHLER
SITE CIVIL AND CONSULTING ENGINEERING
PROGRAM MANAGEMENT
LANDSCAPE ARCHITECTURE
SUSTAINABLE DESIGN
PERMITTING SERVICES
TRANSPORTATION SERVICES

REVISIONS

REV	DATE	COMMENT	DRAWN BY	CHECKED BY
1	3/10/20	REVISED BUILDING 2 & GRADING	BPB	JMJ
2	06/15/20	SITE PLAN & GRADING	AWP	JMJ
3	07/15/20	CONSERVATION COMMISSION	JMJ	AWP
4	08/21/20	CONSTRUCTION PHASING	AWP	JMJ
5	10/05/20	ZBA SUBMITTAL PROGRESS SET	AWP	JMJ
6	04/01/21	ZBA COMMENT RESPONSE	AWP	RMM
7	04/13/21	UPDATED SIGNAGE	CFD	RMM
8	05/13/21	WATER LINE AND SIGNAGE	AWP	RMM
9	05/28/21	124 UNIT BUILDING	AWP	RMM

811
Know what's below.
Call before you dig.
ALWAYS CALL 811
It's fast. It's free. It's the law.

PERMIT SET
THIS DRAWING IS INTENDED FOR MUNICIPAL AND/OR AGENCY REVIEW AND APPROVAL. IT IS NOT INTENDING AS A CONSTRUCTION DOCUMENT UNLESS INDICATED OTHERWISE.
PROJECT No.: W191330
DRAWN BY: AWP
CHECKED BY: JMJ
DATE: 02/17/2020
CAD ID.: W191330-CVL-9

PROPOSED SITE PLAN DOCUMENTS
FOR
1165R MASS MA PROPERTY LLC
PROPOSED RESIDENTIAL DEVELOPMENT
1165R MASSACHUSETTS AVE.
MIDDLESEX COUNTY
TOWN OF ARLINGTON, MA
MAP #57, BLOCK #2, LOT #10B
AND PART OF LOT #15

BOHLER
352 TURNPIKE ROAD
SOUTHBOROUGH, MA 01772
Phone: (508) 480-9900
Fax: (508) 480-9080
www.BohlerEngineering.com

J.G. SWENLING
PROFESSIONAL ENGINEER
No. 41657
MASSACHUSETTS LICENSING BOARD
NEW HAMPSHIRE LICENSING BOARD
CONNECTICUT LICENSING BOARD
RHODE ISLAND LICENSING BOARD

SHEET TITLE:
UTILITY PLAN
SHEET NUMBER:
C-501
REVISION 9 - 05/26/21

P:\191330\DRAWINGS\PLAN SET\95R\W191330-CVL-9-3-LAYOUT-C-01-LITL