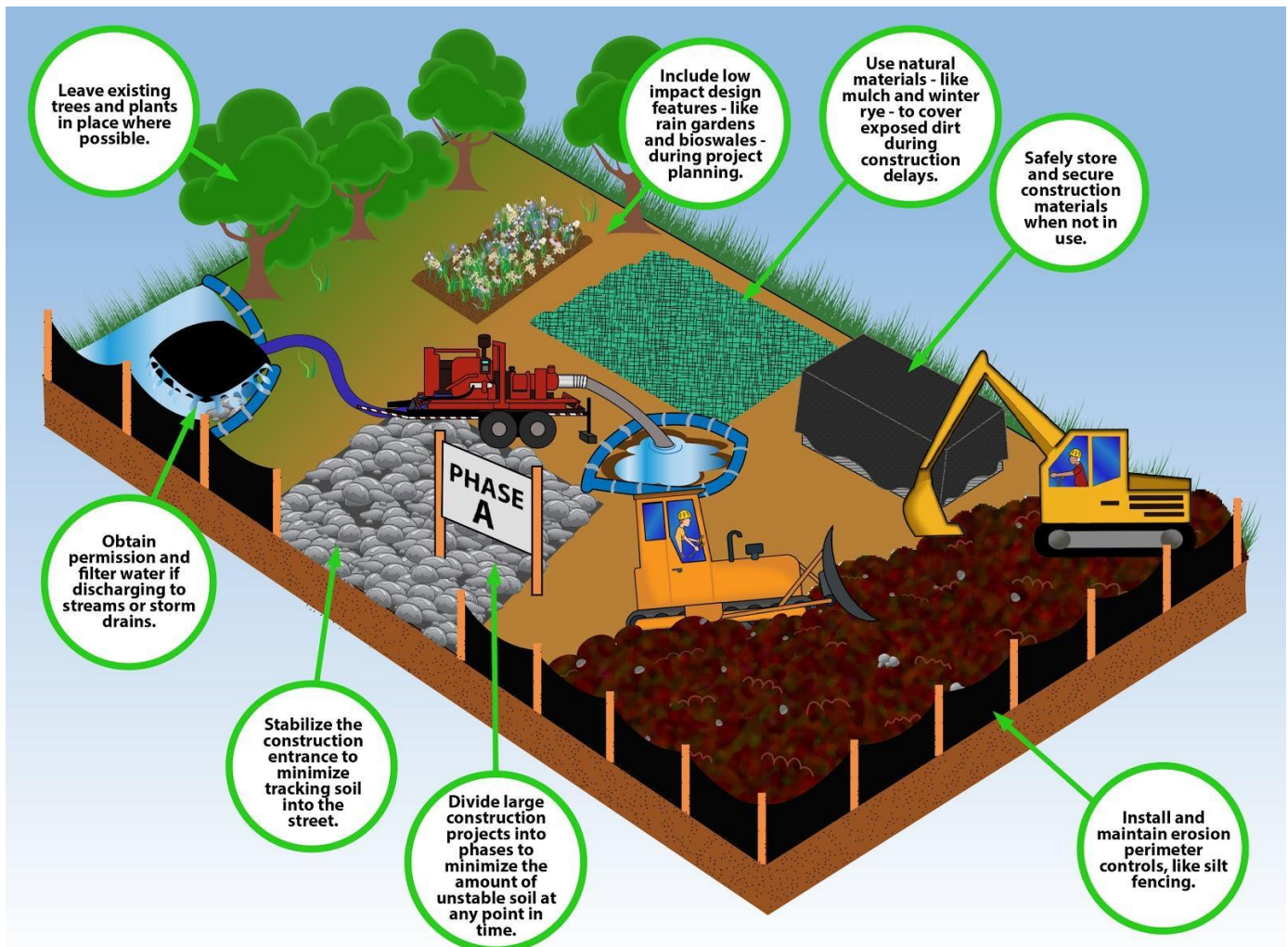




## Plan Ahead to Prevent Pollution: Tips to Reduce Stormwater Runoff During Construction



Contact EPA and your municipality to make sure you have the proper permits before beginning construction.

Construction companies can do their part to keep Massachusetts' waterways clean.

Find more tips like these at [www.ThinkBlueMassachusetts.org](http://www.ThinkBlueMassachusetts.org).

