

SPY POND PLAYGROUND & PARMENTER SCHOOL PLAYGROUND

PUBLIC MEETING #1
November 16, 2020



- **Project team introduction**
- **Project overview**
 - Spy Pond playground
 - Parmenter School playground
- **Listening & discussion**
- **Closing remarks & Next steps**

WHO WE ARE

PUBLIC MEETING #1

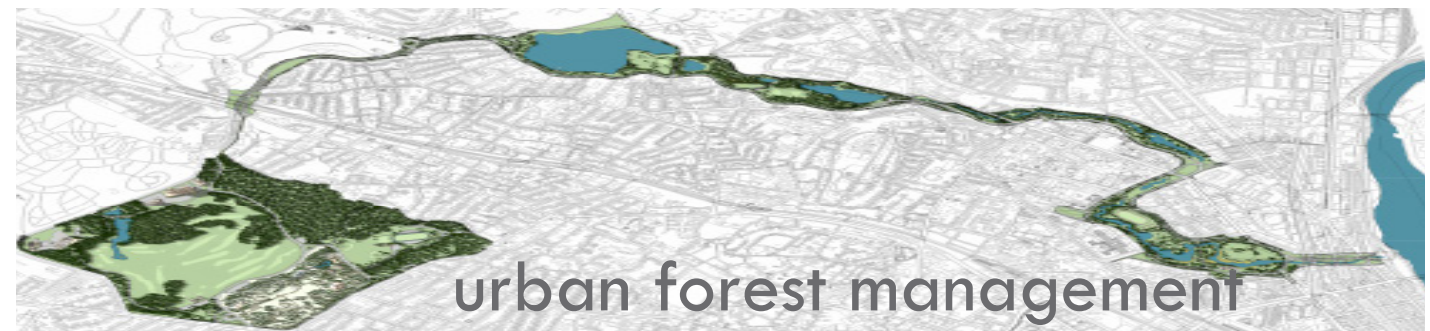
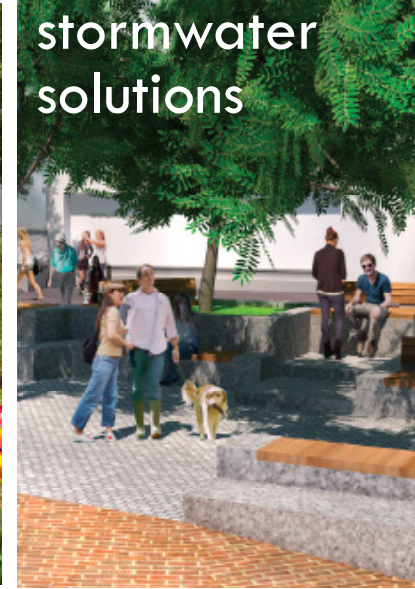
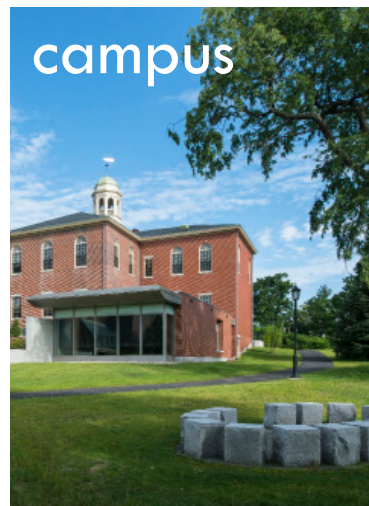
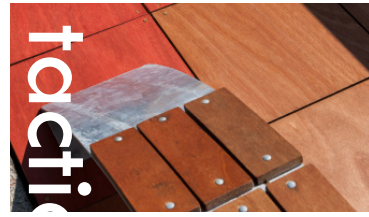
November 16, 2020

LANDSCAPE ARCHITECTS

Kyle Zick

Danielle Desilets

Rob Barella



TOWN OF ARLINGTON
SPY POND PLAYGROUND &
PARMENTER SCHOOL PLAYGROUND



PLAYGROUND EXPERIENCE

PUBLIC MEETING #1

November 16, 2020



TOWN OF ARLINGTON
SPY POND PLAYGROUND &
PARMENTER SCHOOL PLAYGROUND



KEYS TO SUCCESSFUL PUBLIC SPACES

PUBLIC MEETING #1

November 16, 2020



Programming

- Programming
- Understanding both the qualities and limitations of a site



Seating

- Varied forms of seating for all users



- Providing adequate overhead canopy to protect users from the sun and form a comforting sense of enclosure



Comfort



Creative Place-making

- Developing a sense of place through design
- Thoroughly understanding the needs and wants of the users



Accessibility

- ADA accessibility
- Multi-modal transportation access
- Circulation
- Ease of parking



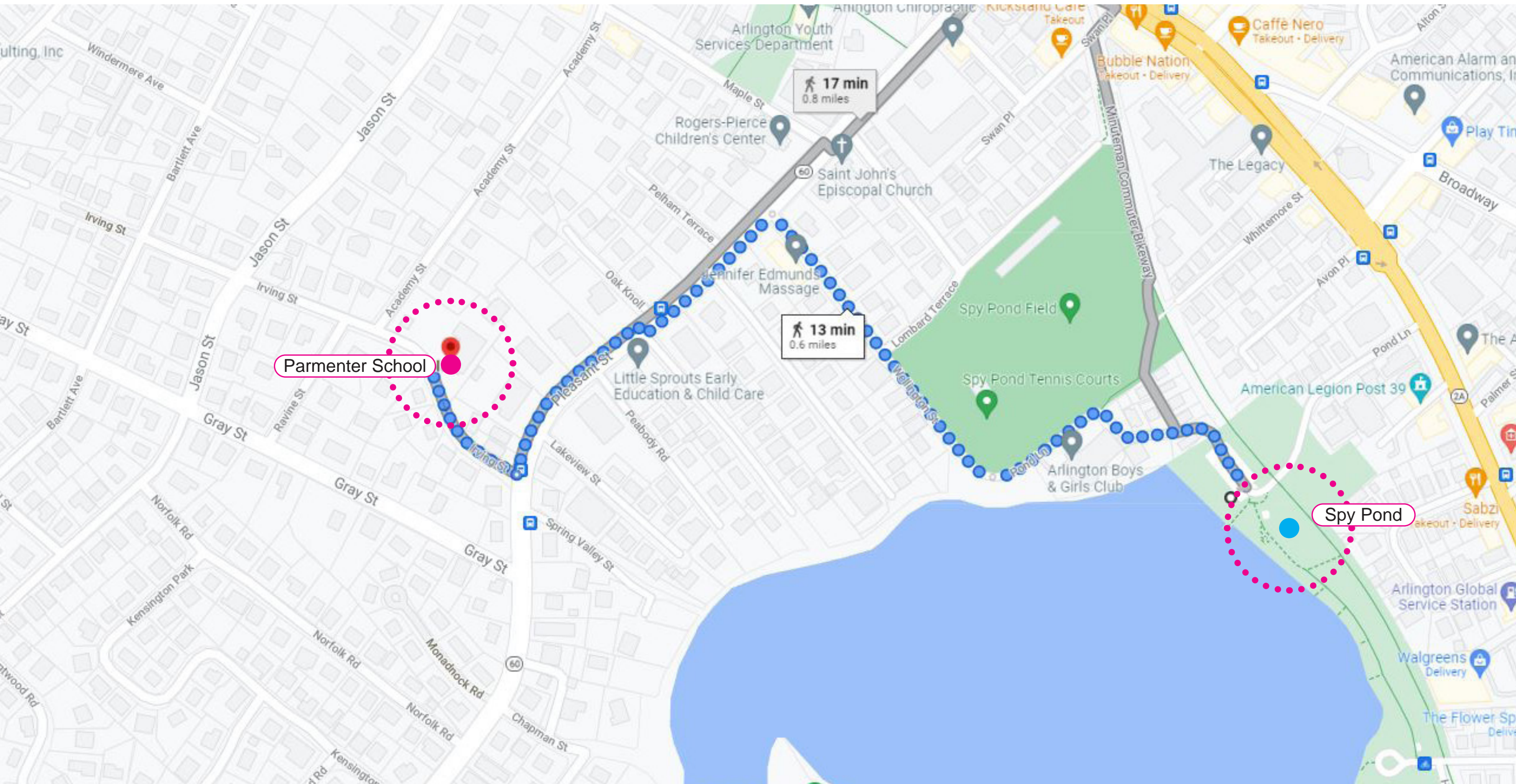
Flexibility

- Providing productive multi-use areas
- Allowing users flexibility in how they want to use and move around a space



Security

- Providing recreation areas, whether passive or active, that promote healthy and safe interactions



TOWN OF ARLINGTON SPY POND PLAYGROUND & PARMENTER SCHOOL PLAYGROUND





Spy Pond Playground

- Destination playground
- Rated for 2-12 year age group
- Wood fiber surfacing
- Dated equipment
- Multiple structures
- Swings
- 1 entrance
- Relatively flat
- Adjacent parking lot



Parmenter School Playground

- Neighborhood/School Use
- Rated for 5-12yr age group
- Wood fiber surfacing
- Dated equipment
- 1 main structure
- 2 entrances
- Sloped lot
- Limited parking

WHO will be using the playground?

Who will be using the playground?



What do they want?

What kind of ACTIVITIES?



Running!



Seating Areas



Imaginative



Games!



Play!



Trees for Shade

What SENSES to engaged?



Hearing (Auditory)



Touch (Tactile)



Balance (Vestibular)



Movement (Proprioception)



Sensory Rest



Sight (Visual)



Tactile



Balance



Types of PLAY

PUBLIC MEETING #1
November 16, 2020



TOWN OF ARLINGTON
SPY POND PLAYGROUND &
PARMENTER SCHOOL PLAYGROUND



TYPES OF PLAYGROUNDS



• PASSIVE VS. ACTIVE PLAY

• AGE GROUPS

- 0-2 years old
- 2-5 years old
- 5-12 years old

• STYLE OF EQUIPMENT

- Traditional (post-and-platform)
- Netclimbers
- Nature play/wooden

• TYPE OF EQUIPMENT

- Large structure
- Several smaller structures
- Swings and other freestanding features
- Elevated play
- Ground level play



OTHER PLAYGROUND FEATURES

PUBLIC MEETING #1
November 16, 2020



Climbing



Playful seating



Performance stage



Stroller parking



Tricycle track



Nature play

TOWN OF ARLINGTON
SPY POND PLAYGROUND &
PARMENTER SCHOOL PLAYGROUND





Poured-in-place (rubber)

Approx. \$25/sf

Pros

- Minimal maintenance
- No weeding
- Fully stable/accessible surface
- Porous

Cons

- Can be slippery when wet
- Expensive
- Repairs require more work



Engineered Wood Fiber

Approx. \$5/sf

Pros

- Less expensive
- Naturalistic

Cons

- Requires more maintenance
- Only accessible if maintained



Combination

- Focus on making an accessible route

SPY POND PLAYGROUND

PUBLIC MEETING #1

November 16, 2020



TOWN OF ARLINGTON
SPY POND PLAYGROUND &
PARMENTER SCHOOL PLAYGROUND



SPY POND PLAYGROUND

PUBLIC MEETING #1

November 16, 2020



TOWN OF ARLINGTON
SPY POND PLAYGROUND &
PARMENTER SCHOOL PLAYGROUND



SPY POND PLAYGROUND

PUBLIC MEETING #1
November 16, 2020



Climbing



Play Structures



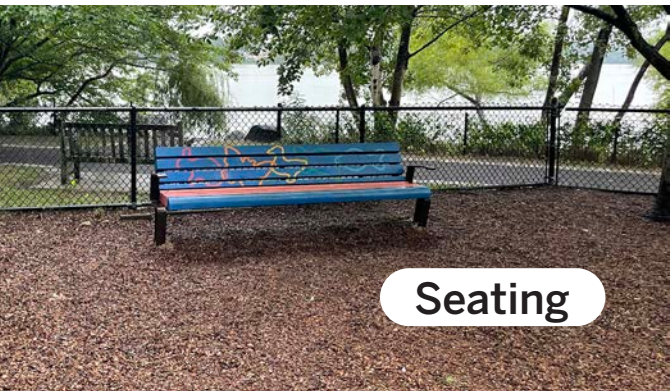
Swings



Fencing



Entrance



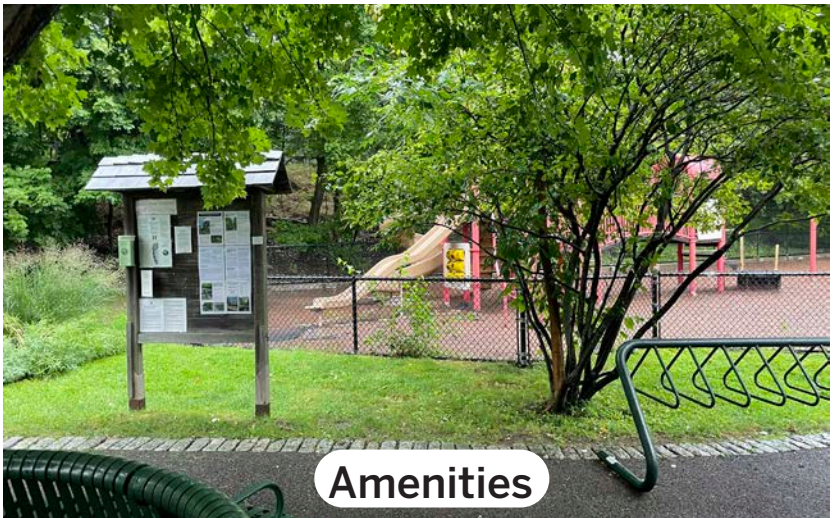
Seating



Surfacing



Pathways



Amenities

TOWN OF ARLINGTON
SPY POND PLAYGROUND &
PARMENTER SCHOOL PLAYGROUND



SPY POND PLAYGROUND - DISCUSSION

PUBLIC MEETING #1
November 16, 2020

What do you want to see at Spy Pond Playground?



TOWN OF ARLINGTON
SPY POND PLAYGROUND &
PARMENTER SCHOOL PLAYGROUND



SPY POND PLAYGROUND - DISCUSSION

PUBLIC MEETING #1

November 16, 2020

Please take the online survey

Visit:

<https://www.surveymonkey.com/r/ARLSpy1>

Or scan the QR code with your phone



PARMENTER SCHOOL PLAYGROUND

PUBLIC MEETING #1
November 16, 2020



TOWN OF ARLINGTON
SPY POND PLAYGROUND &
PARMENTER SCHOOL PLAYGROUND



PARMENTER SCHOOL PLAYGROUND

PUBLIC MEETING #1

November 16, 2020



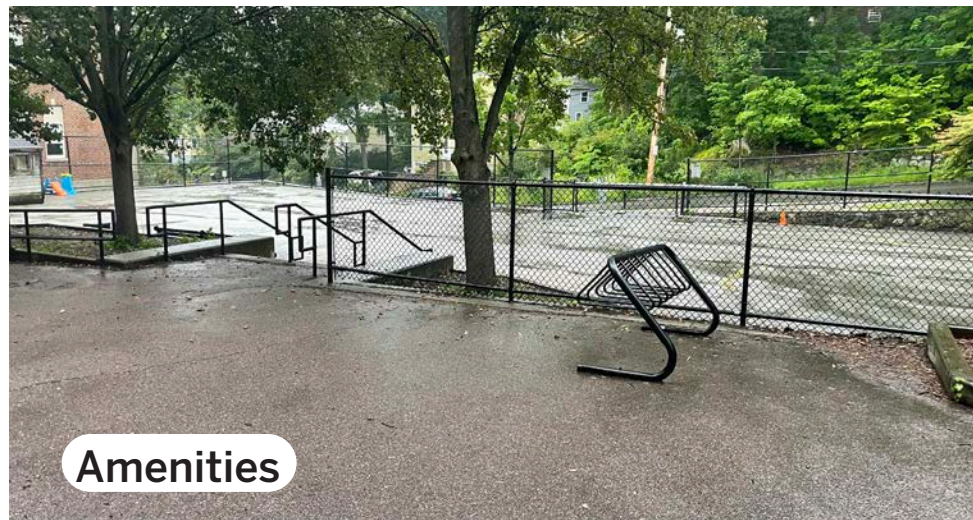
Play Structures



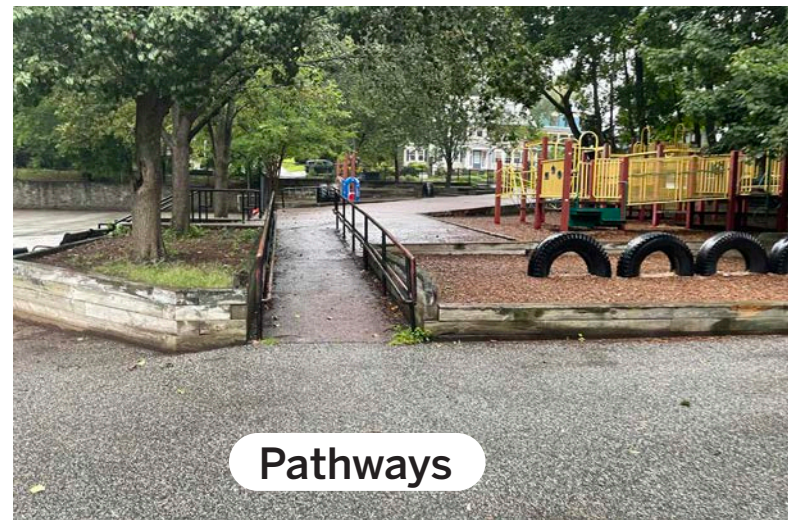
Pavement



Ramp



Amenities



Pathways



Seating



Surfacing

TOWN OF ARLINGTON
SPY POND PLAYGROUND &
PARMENTER SCHOOL PLAYGROUND



PARMENTER SCHOOL PLAYGROUND - DISCUSSION

PUBLIC MEETING #1
November 16, 2020

What do you want to see at Parmenter School Playground?



TOWN OF ARLINGTON
SPY POND PLAYGROUND &
PARMENTER SCHOOL PLAYGROUND



PARMENTER SCHOOL PLAYGROUND - DISCUSSION

PUBLIC MEETING #1

November 16, 2020

Please take the online survey

Visit:

<https://www.surveymonkey.com/r/ARLParm1>

Or scan the QR code with your phone



PROJECT SCHEDULE - NEXT STEPS

PUBLIC MEETING #1
November 16, 2020

Public meeting #1	November 16th
Design phase	November-December
<ul style="list-style-type: none">• Concept design	
Public meeting #2	December 15th
<ul style="list-style-type: none">• Present initial concepts for feedback • Review feedback with Town	
Construction documentation	December-January
Parks & Recreation Commission hearing	Tuesday, January 11th
Construction Phase	Begins February 2022



QUESTIONS? FEEDBACK

PUBLIC MEETING #1
November 16, 2020

