

# Bishop School

Playground Design

Community Meeting #2 March 10, 2022



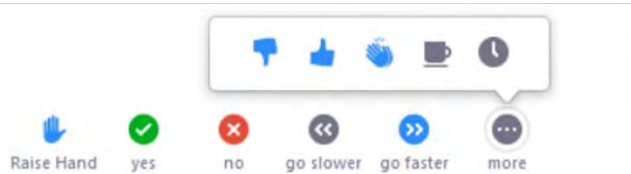


# Zoom Tips

## PRESENTATION:



PLEASE REMAIN MUTED



## NON-VERBAL OPTIONS

CLICK ON PARTICIPANTS (BOTTOM OF SCREEN) AND THESE OPTIONS WILL POP UP IN A SIDE BAR

## Q&A SESSION:



### VIA PHONE

USE \*9 TO RAISE HAND TO ASK QUESTIONS



### VIA WEB

CHAT TO ASK QUESTIONS



### RAISE HAND

FOR QUESTIONS/COMMENTS

*PLEASE BE RESPECTFUL AND COURTEOUS OF ALL PARTICIPANTS WHEN ASKING QUESTIONS OR PROVIDING FEEDBACK SO ALL ATTENDEES ARE ABLE TO PARTICIPATE IN THE MEETING.*



## Project Team

---

**JOE CONNELLY**

DIRECTOR OF RECREATION,  
TOWN OF ARLINGTON

**MARK MCANEY**

PRINCIPAL,  
BISHOP ELEMENTARY SCHOOL

**LESLIE MAYER**

PARKS COMMISSION MEMBER

**MARION NOLAN**

SPECIAL EDUCATION COORDINATOR

**JEN ROTHENBERG**

PARKS COMMISSION MEMBER

**SARA CARRIER**

PARKS COMMISSION MEMBER



# Project Team

---



DAVID WARNER, ASLA  
PRESIDENT / MAIN CONTACT  
PRINCIPAL IN CHARGE



SAMEER BHOITE, PMP  
DESIGN DIRECTOR



EMILY HUNT, ASLA, CPSI  
PROJECT MANAGER



TESSA HALL COMBS  
LANDSCAPE DESIGNER



# Process

---

## PROJECT GOAL

- START CONSTRUCTION THIS SUMMER INTO EARLY FALL
- TIMELINE DESIGNED WITH THIS GOAL
- EXPEDIENT DESIGN PROCESS

## COMMUNITY INPUT

- ✓ SURVEY
- ✓ PUBLIC MEETING #1 FEB 17, 2022
- ✓ MEETING WITH STUDENTS AFTER VACATION
- SECOND PUBLIC DESIGN INPUT MEETING TO REVIEW FINAL DESIGN RECOMMENDATIONS MARCH 10th

## TONIGHT'S MEETING

- **BISHOP 6 PM**, PEIRCE 7 PM, STRATTON 8 PM



### PLAYGROUND RENOVATION ONLY

- FOCUS ON PLAYGROUND RENOVATION ONLY
- ARPA (AMERICAN RESCUE PLAN ACT FUNDS) – ESTIMATING \$1.8 MILLION
- NOT A FULL PARK RENOVATION LIKE OTHER PARK COMMISSION PROJECTS
- KEEPING THIS FOCUS ALONG THE WAY WILL BE DIFFICULT TO DO!

### DESIGN GUIDELINES

- REPLACEMENT OF PLAY EQUIPMENT AND SAFETY SURFACING
- FOCUS ON SCHOOL AGE APPROPRIATE EQUIPMENT (5-12 AGES)
- DURABLE MATERIALS FOR HEAVY USE (PREFERENCE FOR METAL OVER WOOD STRUCTURES)

### TONIGHT'S PRESENTATION

- PROPOSED FINAL DESIGN WALK THROUGH AND FEEDBACK
- HOLD ALL QUESTIONS UNTIL THE END



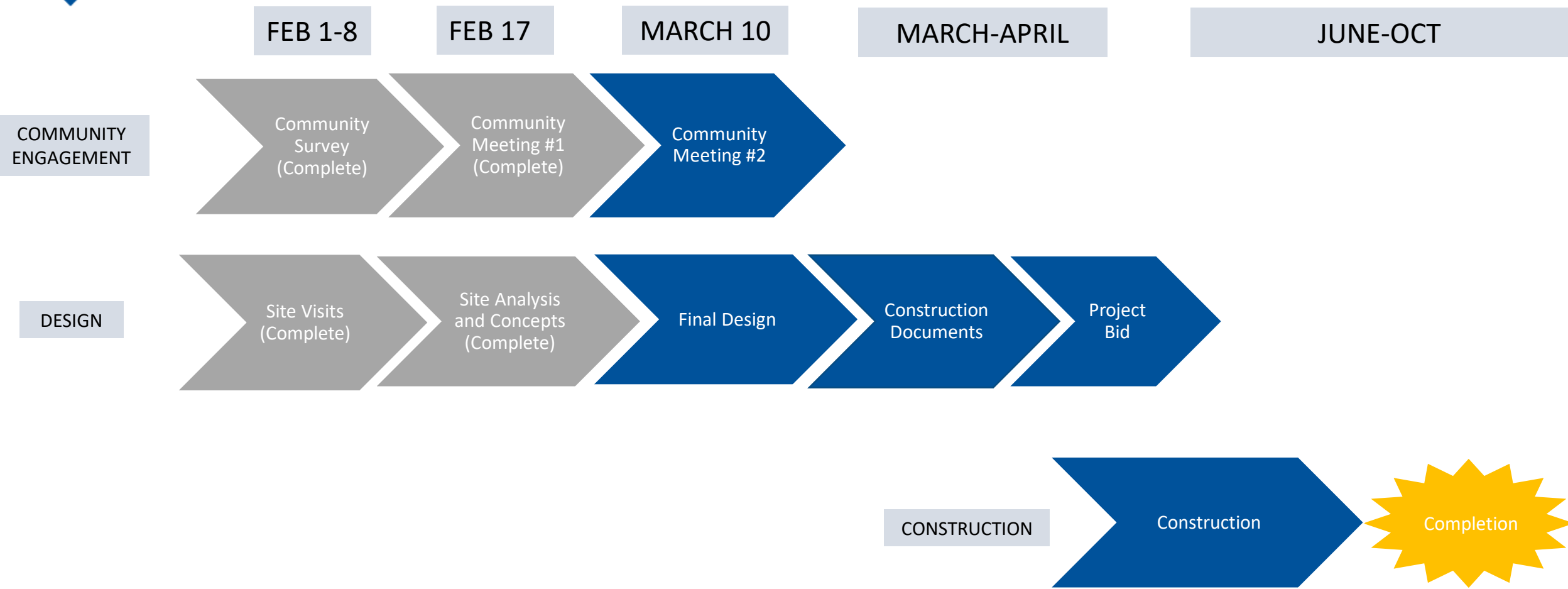
# Agenda

---

1. PROJECT SCHEDULE AND SCOPE
2. MEETING #1 RECAP
3. SCHOOL FEEDBACK
4. PROPOSED DESIGN
5. FEEDBACK
6. NEXT STEPS



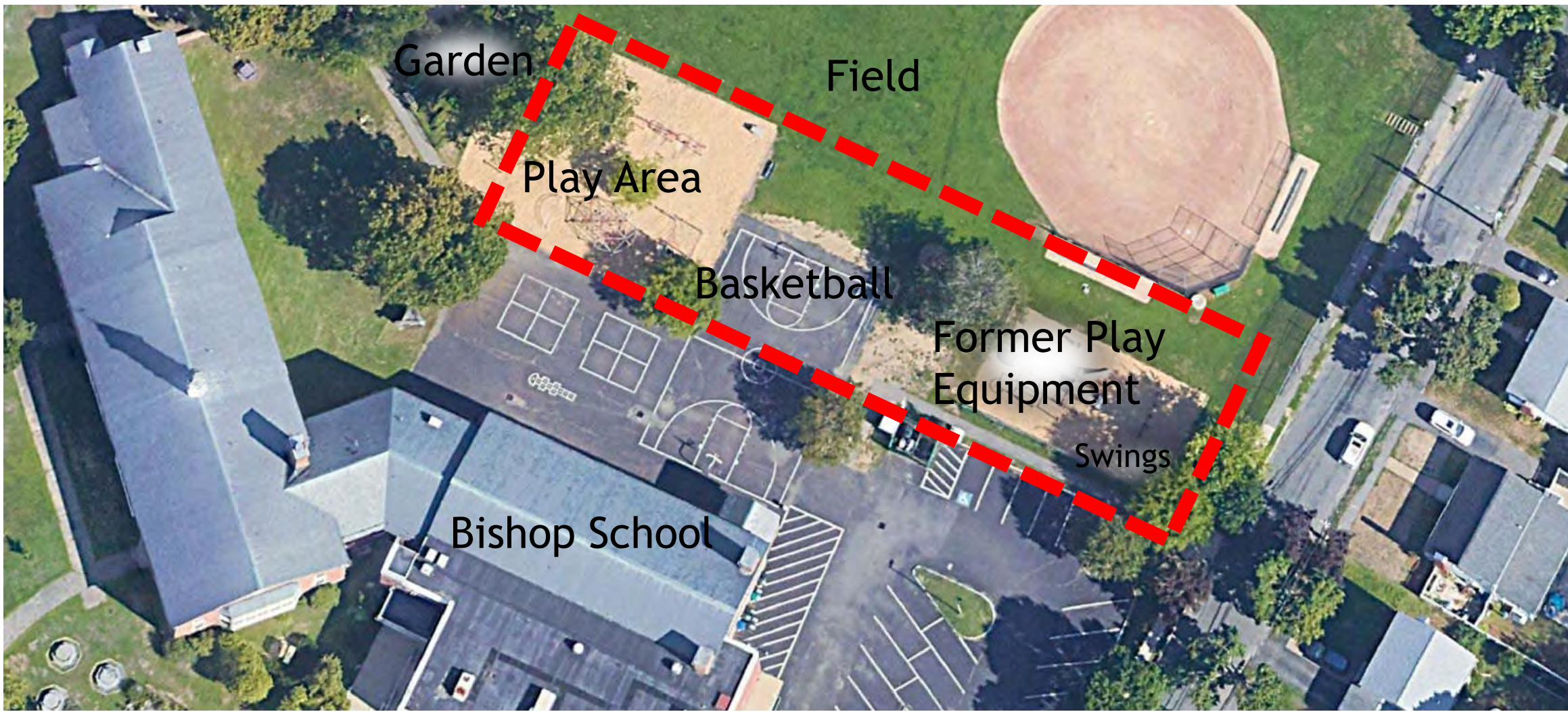
# Project Schedule







# Bishop Playground Scope





# Community Meeting #1 Play Structure Preference

## Preferred Structure



## Other decisions

Keep basketball court (close to existing size)

Utilize the space behind the baseball backstop (no foul ball concern cited)



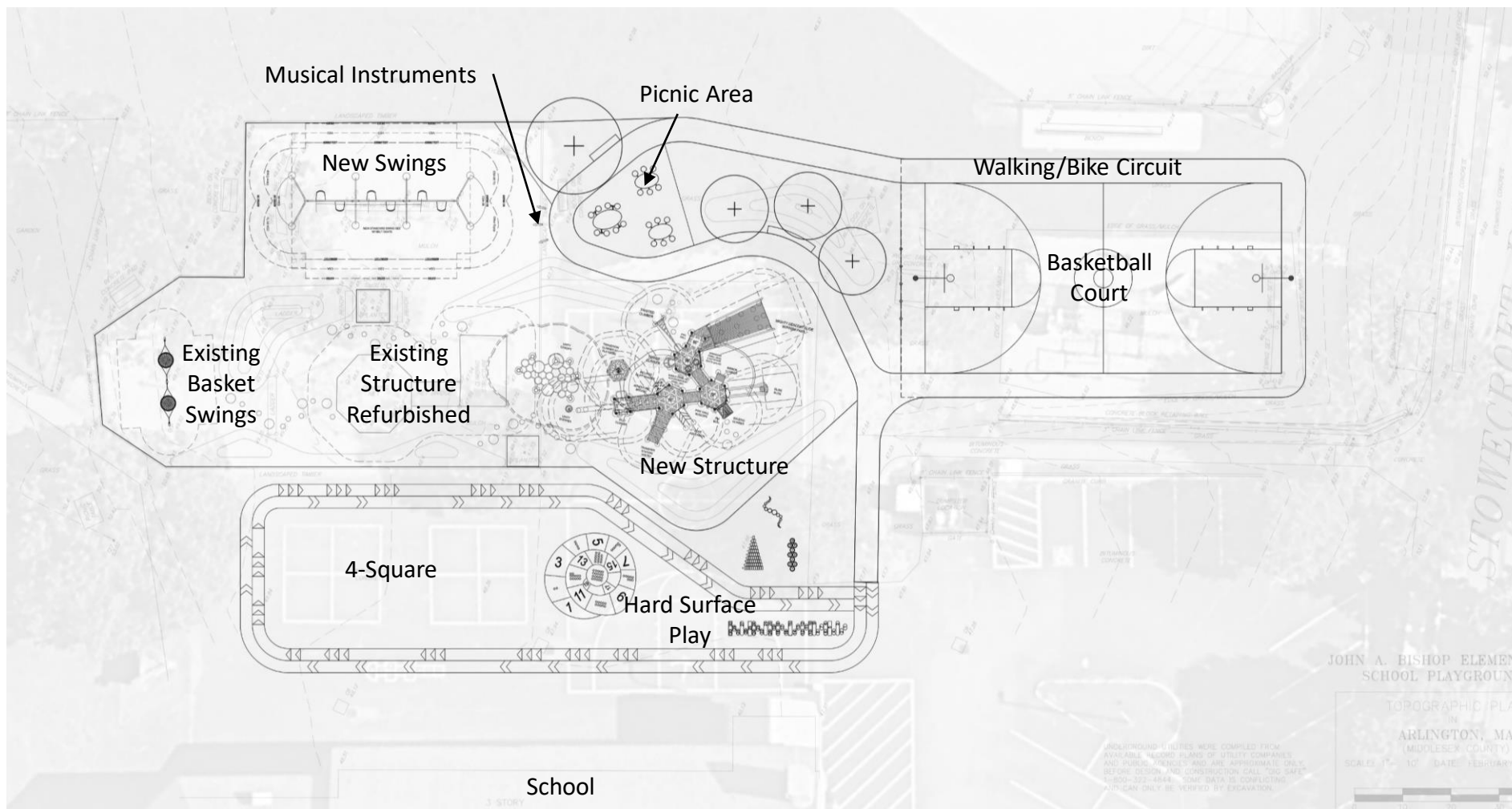
# Student/Principal Feedback



- Decision to proceed with this structure
- Keep the new structure close to the existing rope climbing structure (refurbished) and link the play as obstacle
- Basketball court can go behind baseball
- Like to have a group see-saw (**Limited Space does not allow it**)



# Proposed Design





## Proposed Design Color and Concept Inspiration

---

Fun and cheerful for the connected play course/obstacle



High visual contrast at elevation change

Work with existing rope structure to feel connected

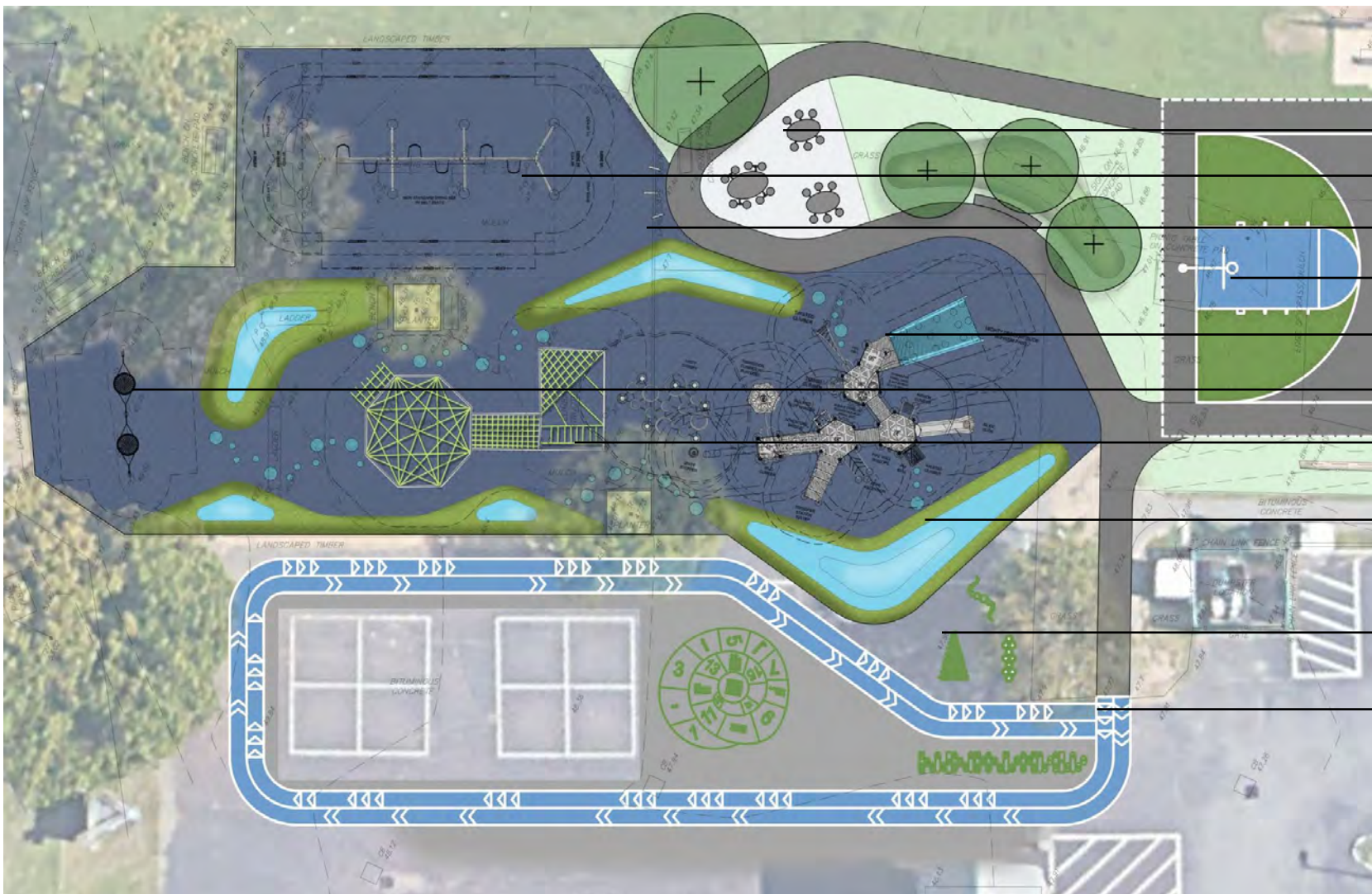


# Rendered Design - "Circuit"





# Rendered Design - "Circuit" - Zoomed In



- Picnic Area
- Swings
- Musical Instruments
- Basketball Court
- 5-12 Structure
- Existing Basket Swings
- 5-12 Refurbished Structure
- Play Mounds and Obstacle Course
- Painted Counting Games
- Running Track (painted asphalt)

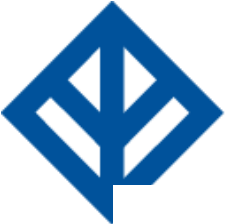


# Linked Play (Color Scheme)









# More New Play Structure Views





# More New Play Structure Views





# Additional Play Features



Play Mounds

Obstacle Course

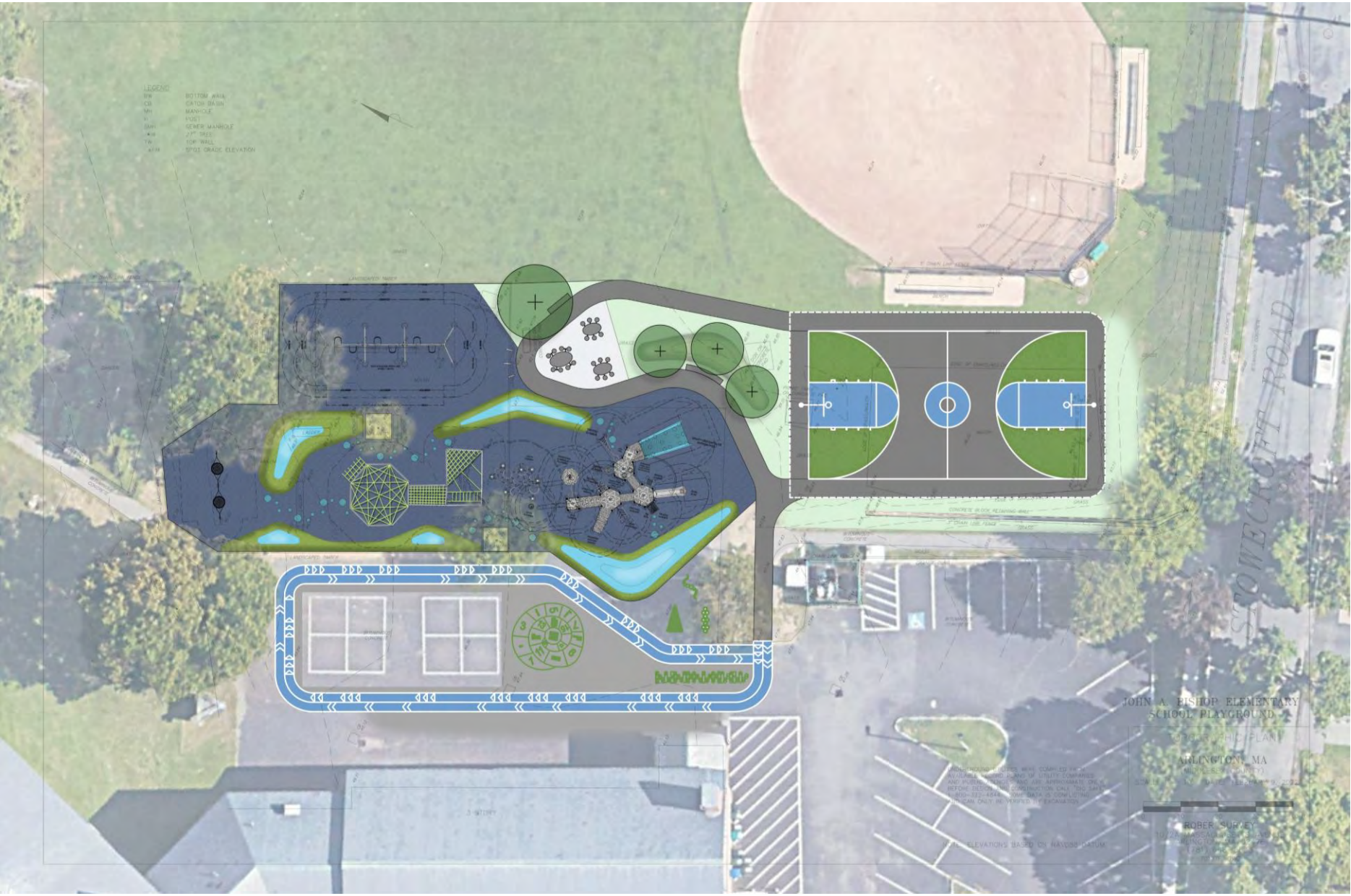


Musical Instruments





# Feedback / Questions





## Next Steps

---

- Final Cost Estimates and Adjustments to Proposed Design
- Final Design Published On Town Website
- Construction Documents and BID Set
- Summer Construction
- Project Completion