

Peirce School

Playground Design

Community Meeting March 10, 2022



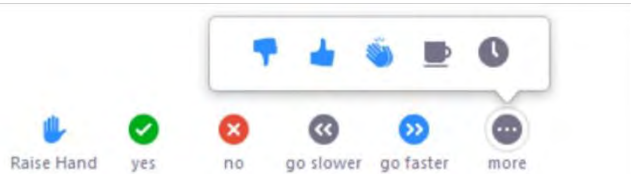


Zoom Tips

PRESENTATION:



PLEASE REMAIN MUTED



NON-VERBAL OPTIONS

CLICK ON PARTICIPANTS (BOTTOM OF SCREEN) AND THESE OPTIONS WILL POP UP IN A SIDE BAR

Q&A SESSION:



VIA PHONE

USE *9 TO RAISE HAND TO ASK QUESTIONS



VIA WEB

CHAT TO ASK QUESTIONS



RAISE HAND

FOR QUESTIONS/COMMENTS

PLEASE BE RESPECTFUL AND COURTEOUS OF ALL PARTICIPANTS WHEN ASKING QUESTIONS OR PROVIDING FEEDBACK SO ALL ATTENDEES ARE ABLE TO PARTICIPATE IN THE MEETING.



Project Team

JOE CONNELLY

DIRECTOR OF RECREATION,
TOWN OF ARLINGTON

ANDREW AHMADI

PRINCIPAL,
PEIRCE ELEMENTARY SCHOOL

LESLIE MAYER

PARKS COMMISSION MEMBER

TRICIA LYNCH

SPECIAL EDUCATION COORDINATOR

JEN ROTHENBERG

PARKS COMMISSION MEMBER

SARA CARRIER

PARKS COMMISSION MEMBER



Project Team



DAVID WARNER, ASLA
PRESIDENT / MAIN CONTACT
PRINCIPAL IN CHARGE



SAMEER BHOITE, PMP
DESIGN DIRECTOR



EMILY HUNT, ASLA, CPSI
PROJECT MANAGER



TESSA HALL COMBS
LANDSCAPE DESIGNER



Process

PROJECT GOAL

- START CONSTRUCTION THIS SUMMER INTO EARLY FALL
- TIMELINE DESIGNED WITH THIS GOAL
- EXPEDIENT DESIGN PROCESS

COMMUNITY INPUT

- ✓ SURVEY
- ✓ PUBLIC MEETING #1 FEB 17, 2022
- ✓ MEETING WITH STUDENTS AFTER VACATION
- SECOND PUBLIC DESIGN INPUT MEETING TO REVIEW FINAL DESIGN RECOMMENDATIONS MARCH 10th

TONIGHT'S MEETING

- BISHOP 6 PM, [PEIRCE 7 PM](#), STRATTON 8 PM



PLAYGROUND RENOVATION ONLY

- FOCUS ON PLAYGROUND RENOVATION ONLY
- ARPA (AMERICAN RESCUE PLAN ACT FUNDS) – ESTIMATING \$1.8 MILLION
- NOT A FULL PARK RENOVATION LIKE OTHER PARK COMMISSION PROJECTS
- KEEPING THIS FOCUS ALONG THE WAY WILL BE DIFFICULT TO DO!

DESIGN GUIDELINES

- REPLACEMENT OF PLAY EQUIPMENT AND SAFETY SURFACING
- FOCUS ON SCHOOL AGE-APPROPRIATE EQUIPMENT (5-12 AGES)
- DURABLE MATERIALS FOR HEAVY USE (PREFERENCE FOR METAL OVER WOOD STRUCTURES)

TONIGHT'S PRESENTATION

- FINAL DESIGN WALKTHROUGH AND FEEDBACK
- HOLD ALL QUESTIONS UNTIL THE END

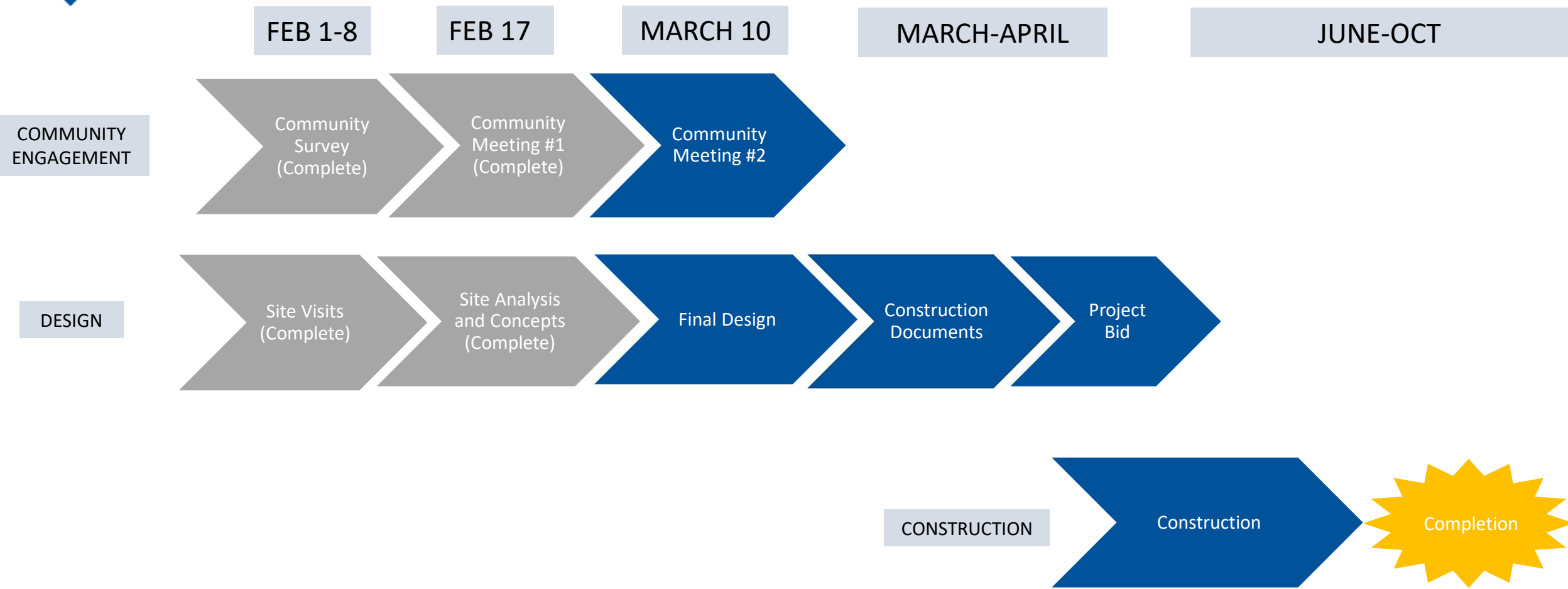


Agenda

1. PROJECT SCHEDULE/SCOPE
2. MEETING #1 RECAP
3. SCHOOL FEEDBACK
4. PROPOSED DESIGN
5. FEEDBACK
6. NEXT STEPS

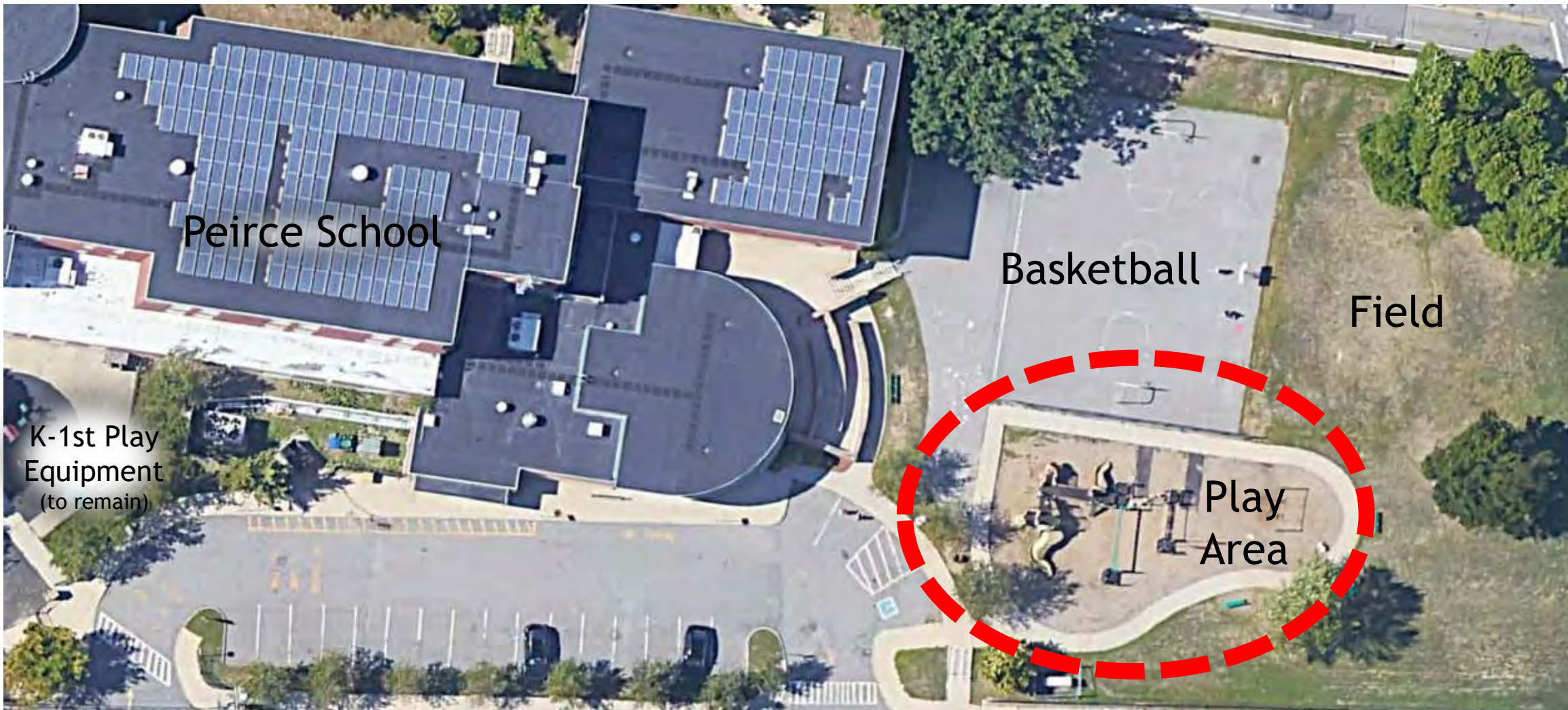


Project Schedule





Peirce Playground Renovation Scope





Community Meeting Play Structure Preference

✓ **CLEAR WINNER** (*Menti-meter*)



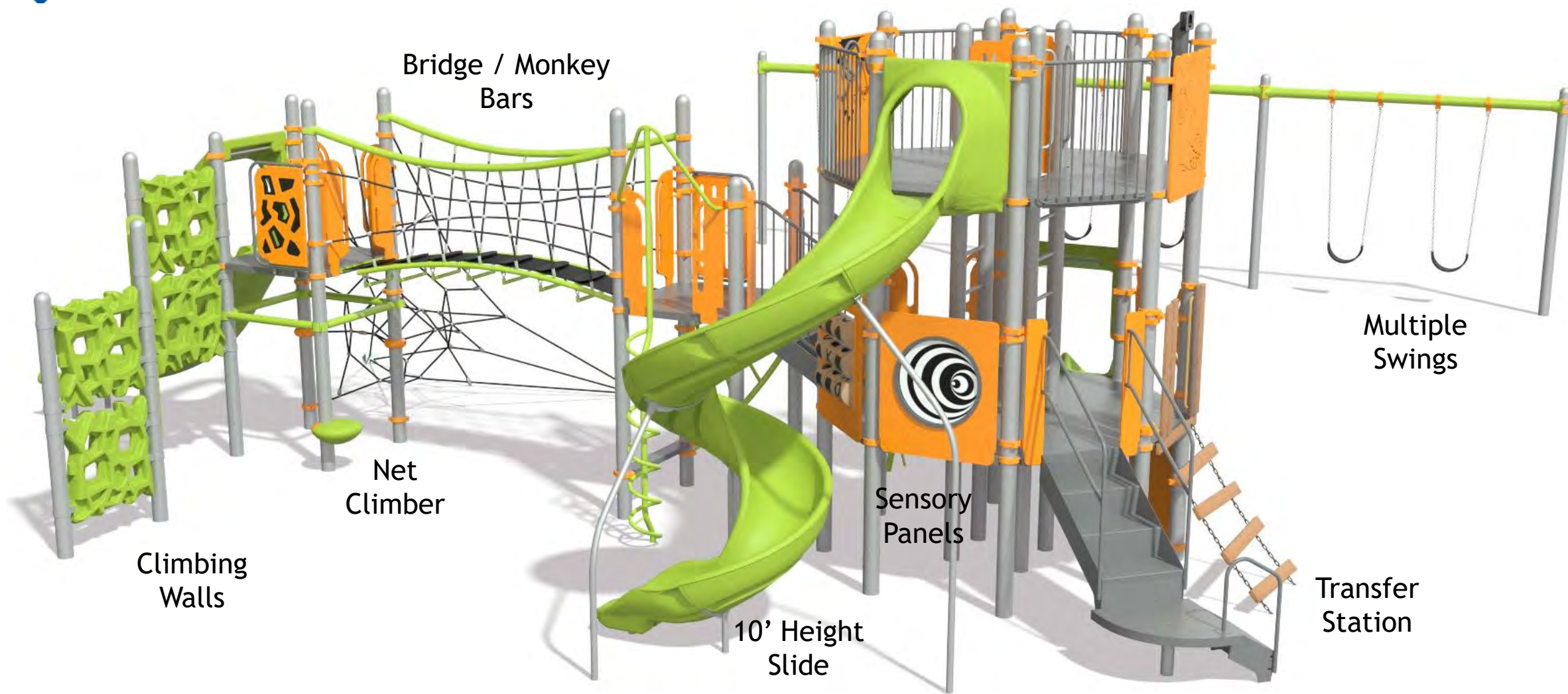


Student / Principal Feedback

- Keep a loop
- Keep the Basketball Court
- Keep as much asphalt as possible
- Like to see a group spinner
- Add shade/seating



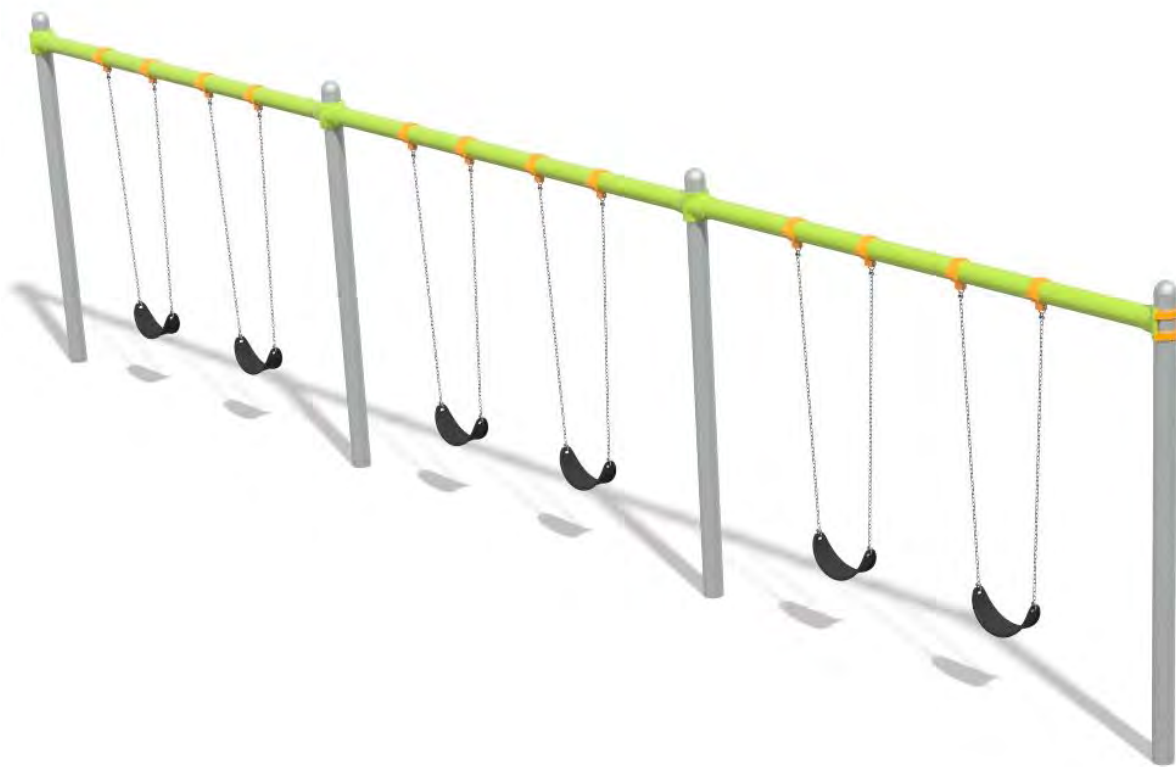
Peirce Playground Structure





Other Play Elements

6 BELT SWINGS

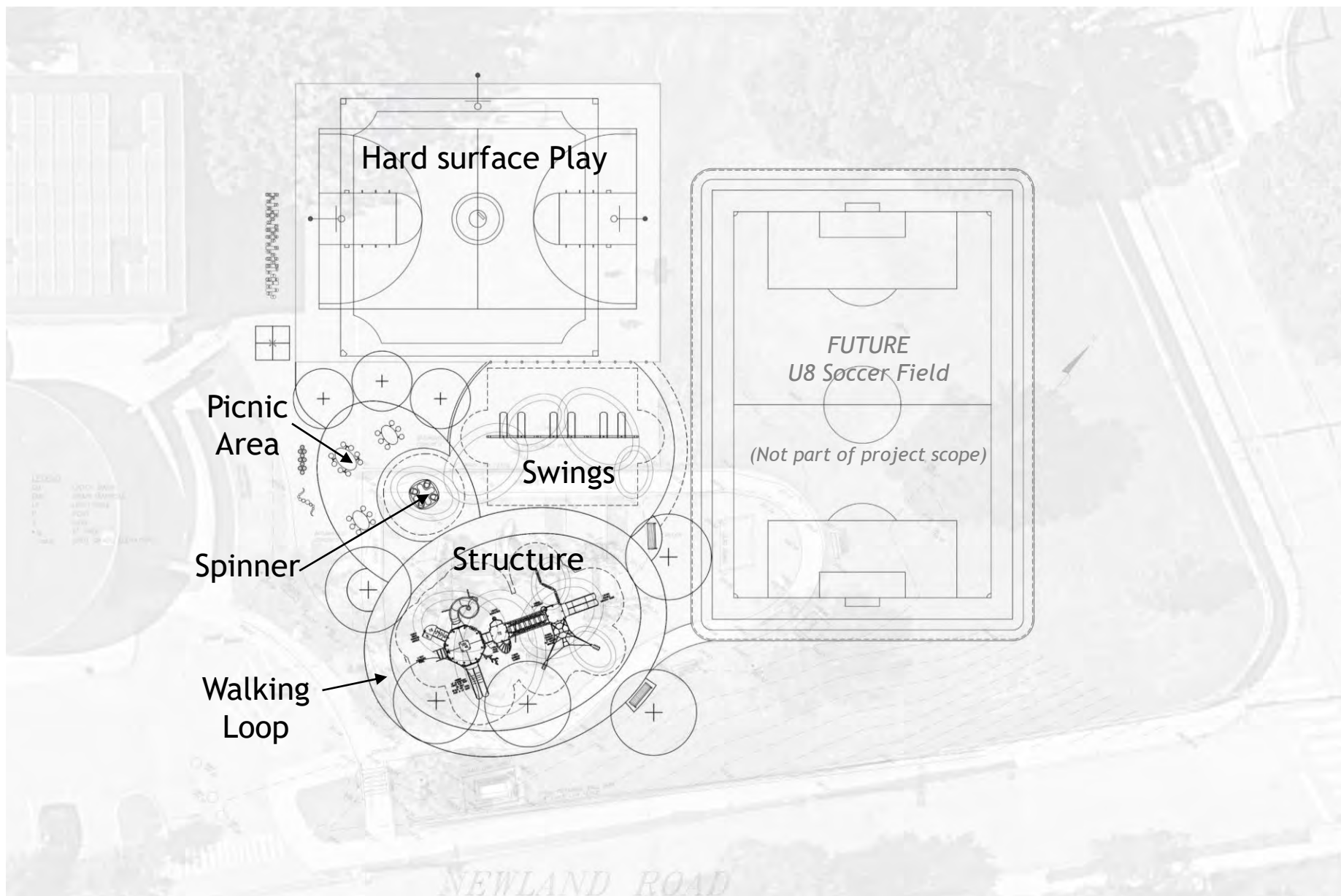


GROUP SINNER (ACCESSIBLE)





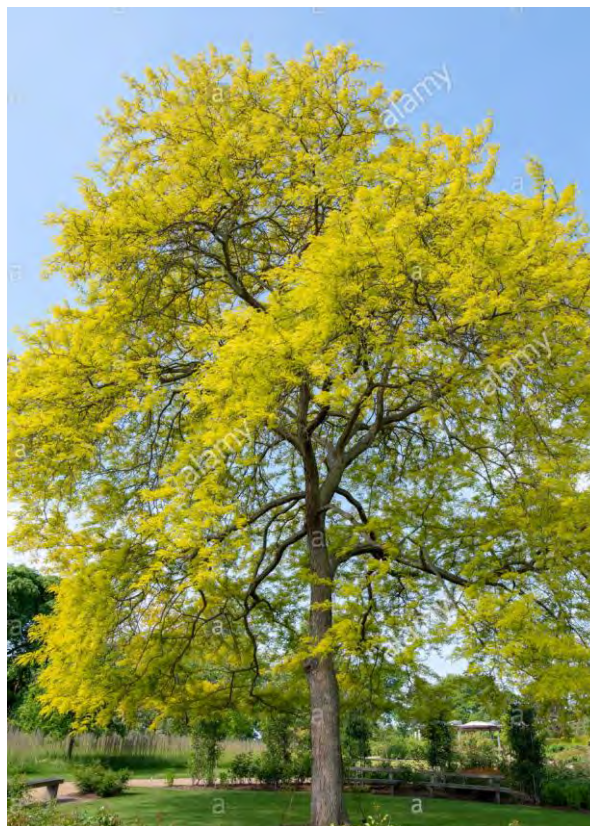
Proposed Design





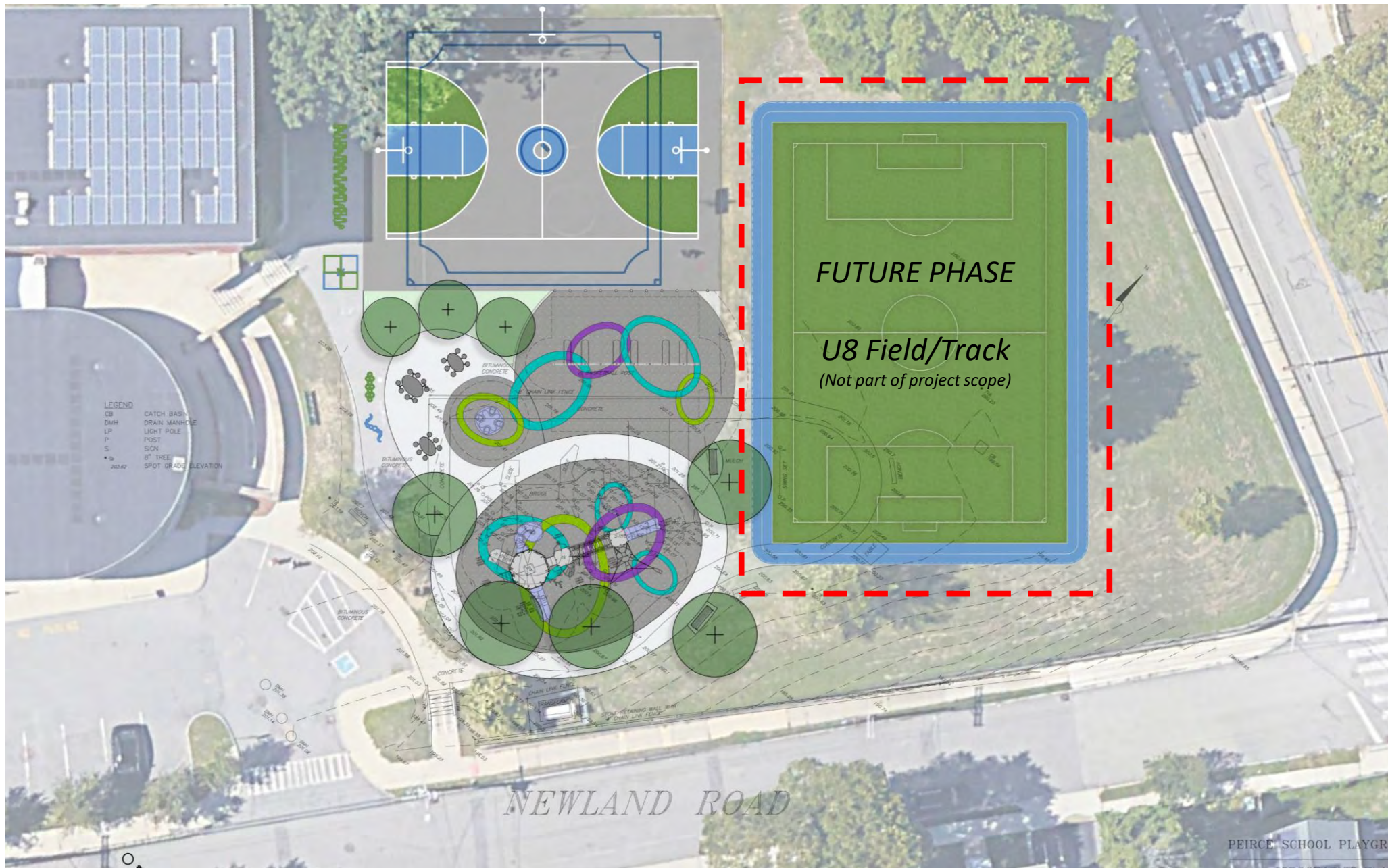
Proposed Design and Color Inspiration

Lighter fun colors (structure/surfacing) stay cooler in summer
Integrate shade and ornamental trees



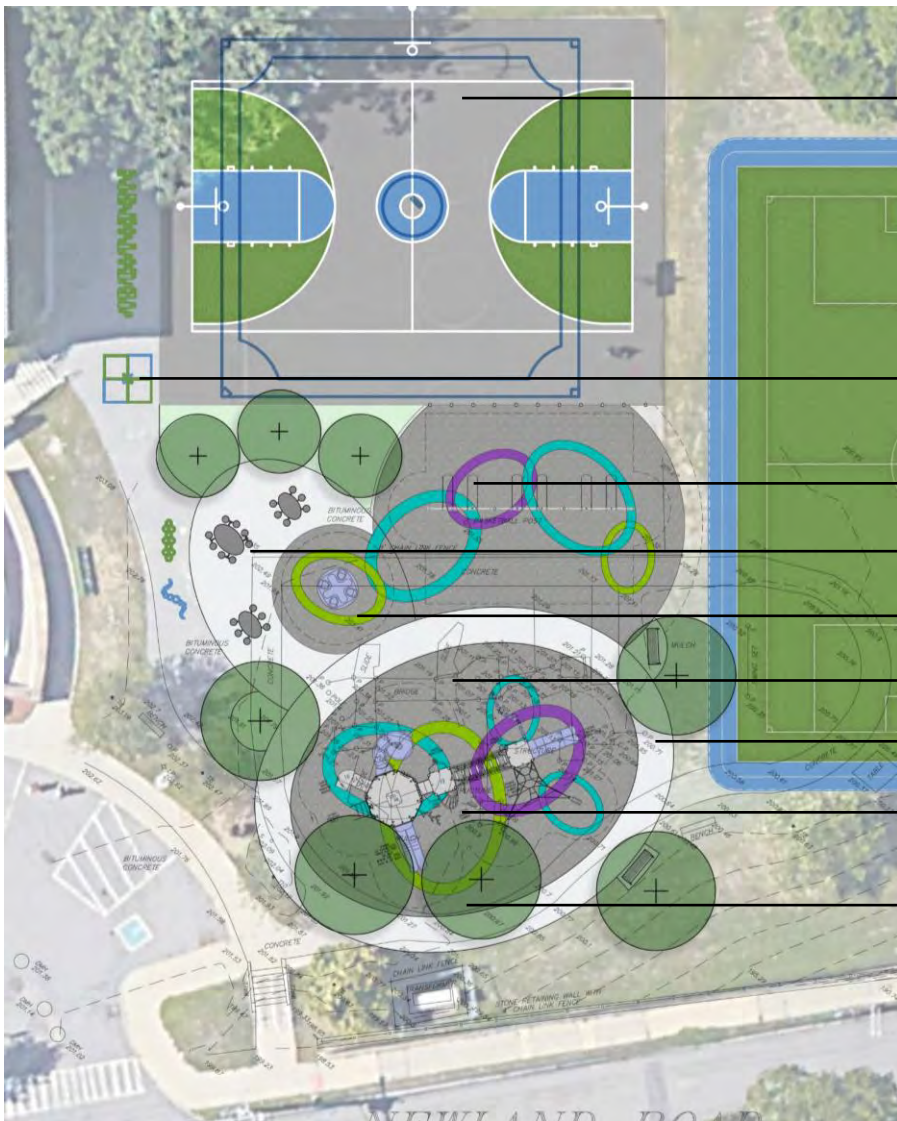


Rendered Design - "LOOP"





Rendered Design - "LOOP" Zoomed In



Basketball Court and Kickball

FUTURE PHASE - U8 Field/Track

Pavement Play/Learning Games

Swings

Picnic Tables

Group Spinner

Safety Rubber Surfacing

Walking Loop

Main Structure

Shade Trees

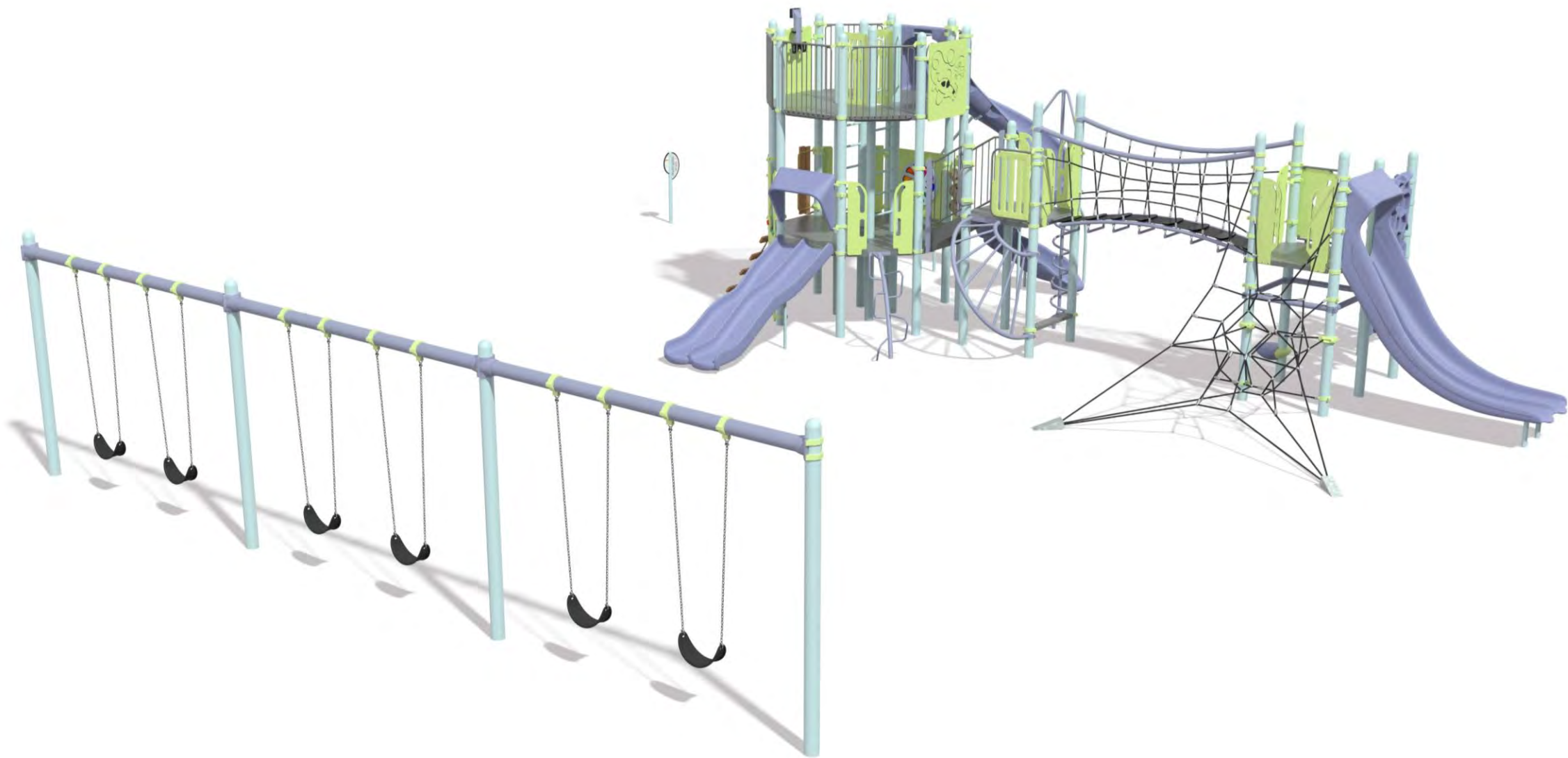


Peirce Playground Structure Colors



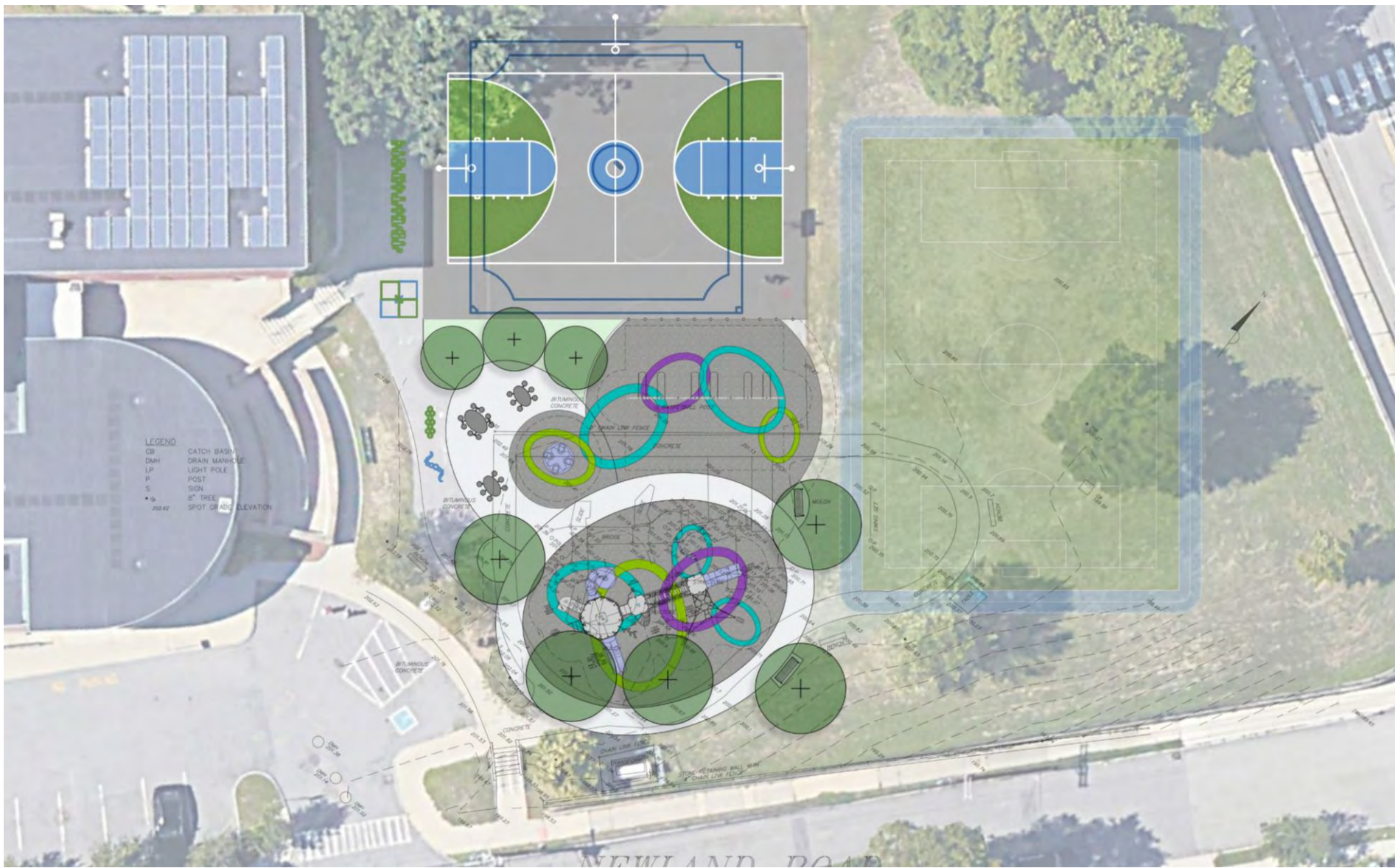


Peirce Playground Structure Colors





Feedback / Questions





Next Steps

- Final Cost Estimates and Adjustments to Proposed Design
- Final Design Published On Town Website
- Construction Documents and BID Set
- Summer Construction
- Project Completion