

Stratton School

Playground Design

Community Meeting #2 March 10, 2022



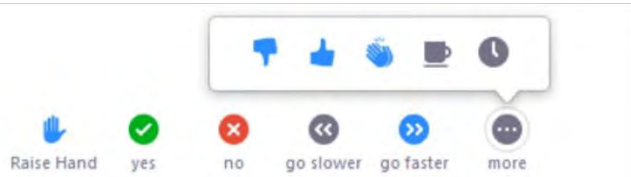


Zoom Tips

PRESENTATION:



PLEASE REMAIN MUTED



NON-VERBAL OPTIONS

CLICK ON PARTICIPANTS (BOTTOM OF SCREEN) AND THESE OPTIONS WILL POP UP IN A SIDE BAR

Q&A SESSION:



VIA PHONE

USE *9 TO RAISE HAND TO ASK QUESTIONS



VIA WEB

CHAT TO ASK QUESTIONS



RAISE HAND

FOR QUESTIONS/COMMENTS

PLEASE BE RESPECTFUL AND COURTEOUS OF ALL PARTICIPANTS WHEN ASKING QUESTIONS OR PROVIDING FEEDBACK SO ALL ATTENDEES ARE ABLE TO PARTICIPATE IN THE MEETING.



Project Team

JOE CONNELLY

DIRECTOR OF RECREATION,
TOWN OF ARLINGTON

LESLIE MAYER

PARKS COMMISSION MEMBER

JEN ROTHENBERG

PARKS COMMISSION MEMBER

SARA CARRIER

PARKS COMMISSION MEMBER

MIKE HANNA

PRINCIPAL,
STRATTON ELEMENTARY SCHOOL

EMILY SULLIVAN

SPECIAL EDUCATION COORDINATOR



Project Team



DAVID WARNER, ASLA
PRESIDENT / MAIN CONTACT
PRINCIPAL IN CHARGE



SAMEER BHOITE, PMP
DESIGN DIRECTOR



EMILY HUNT, ASLA, CPSI
PROJECT MANAGER



TESSA HALL COMBS
LANDSCAPE DESIGNER



Process

PROJECT GOAL

- START CONSTRUCTION THIS SUMMER INTO EARLY FALL
- TIMELINE DESIGNED WITH THIS GOAL
- EXPEDIENT DESIGN PROCESS

COMMUNITY INPUT

- ✓ SURVEY
- ✓ PUBLIC MEETING #1 FEB 17 2022
- ✓ MEETING WITH STUDENTS AFTER VACATION
- SECOND PUBLIC DESIGN INPUT MEETING TO REVIEW FINAL DESIGN RECOMMENDATIONS MARCH 10th

TONIGHT'S MEETING

- BISHOP 6 PM, PEIRCE 7 PM, [STRATTON 8 PM](#)



PLAYGROUND RENOVATION ONLY

- FOCUS ON PLAYGROUND RENOVATION ONLY
- ARPA (AMERICAN RESCUE PLAN ACT FUNDS) – ESTIMATING \$1.8 MILLION
- NOT A FULL PARK RENOVATION LIKE OTHER PARK COMMISSION PROJECTS
- KEEPING THIS FOCUS ALONG THE WAY WILL BE DIFFICULT TO DO!

DESIGN GUIDELINES

- REPLACEMENT OF PLAY EQUIPMENT AND SAFETY SURFACING
- FOCUS ON SCHOOL AGE APPROPRIATE EQUIPMENT (5-12 AGES)
- DURABLE MATERIALS FOR HEAVY USE (PREFERENCE FOR METAL OVER WOOD STRUCTURES)

TONIGHT'S PRESENTATION

- FINAL DESIGN WALK-THROUGH AND FEEDBACK
- HOLD ALL QUESTIONS UNTIL THE END

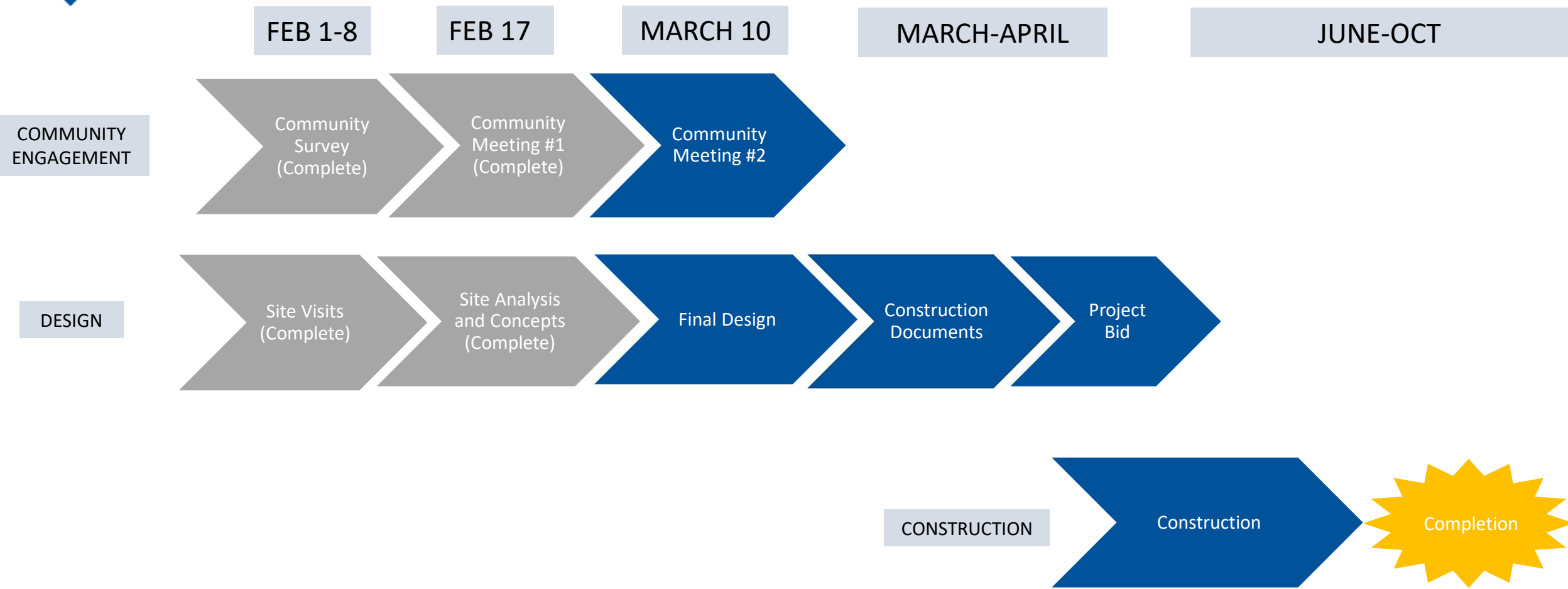


Agenda

1. PROJECT SCHEDULE AND SCOPE
2. MEETING #1 RECAP
3. SCHOOL FEEDBACK
4. PROPOSED DESIGN
5. FEEDBACK
6. NEXT STEPS



Project Schedule



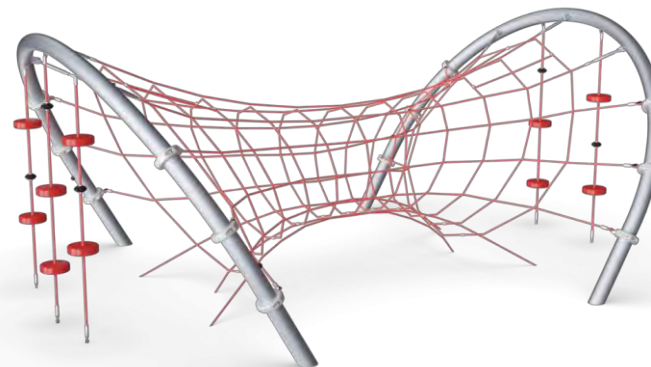


Stratton Playground Scope





Community Meeting #1 Play Structure Preference



✓ **CLEAR
WINNER
(Menti-meter)**

*Keep the 2-5
structure and
swings where
they are*

*Connect the play
elements*

*Feedback to see
more inclusive
elements
throughout the
playground*

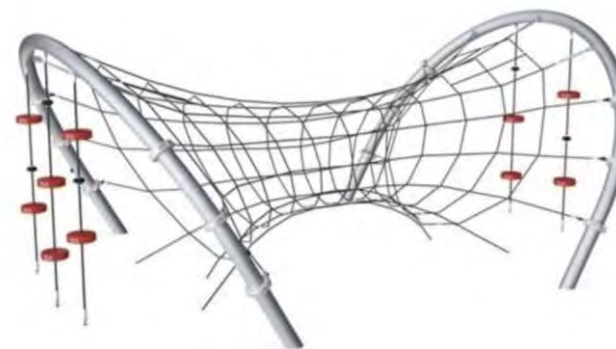


Other Play Elements

2-5 play structure with ground based play elements



2-12 ADA accessible carousel



Arc Tunnel
Rope Climbing



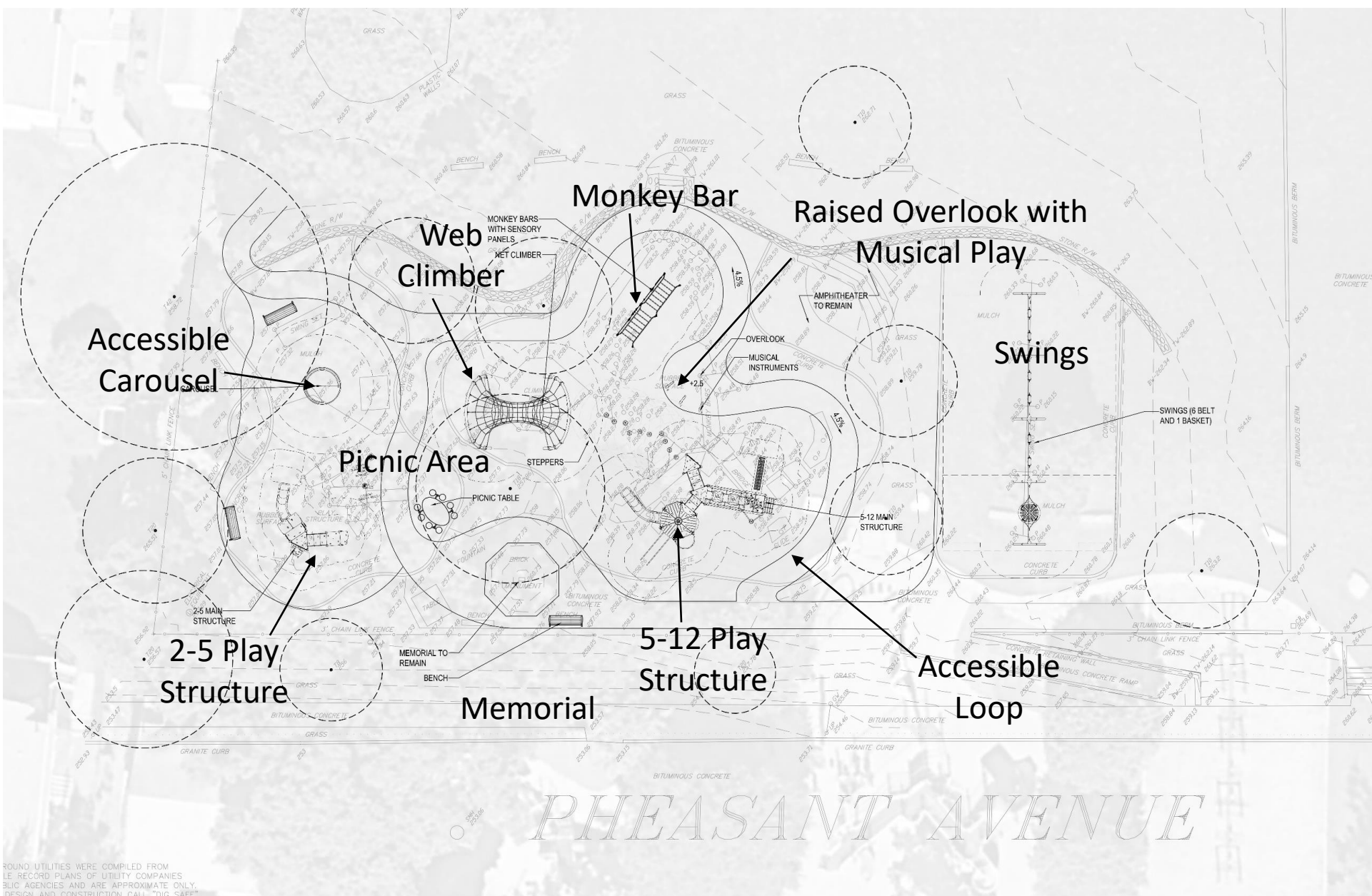
Monkey
Bars



Basket
Swing



Site Design Concept





Revised Play Structure - Ramp Option





Revised Play Structure - Ramp Option





Revised Proposed Design - Other Play Elements

2-5 play structure with ground based play elements



2-12 ADA accessible carousel



Arc Tunnel
Rope Climbing



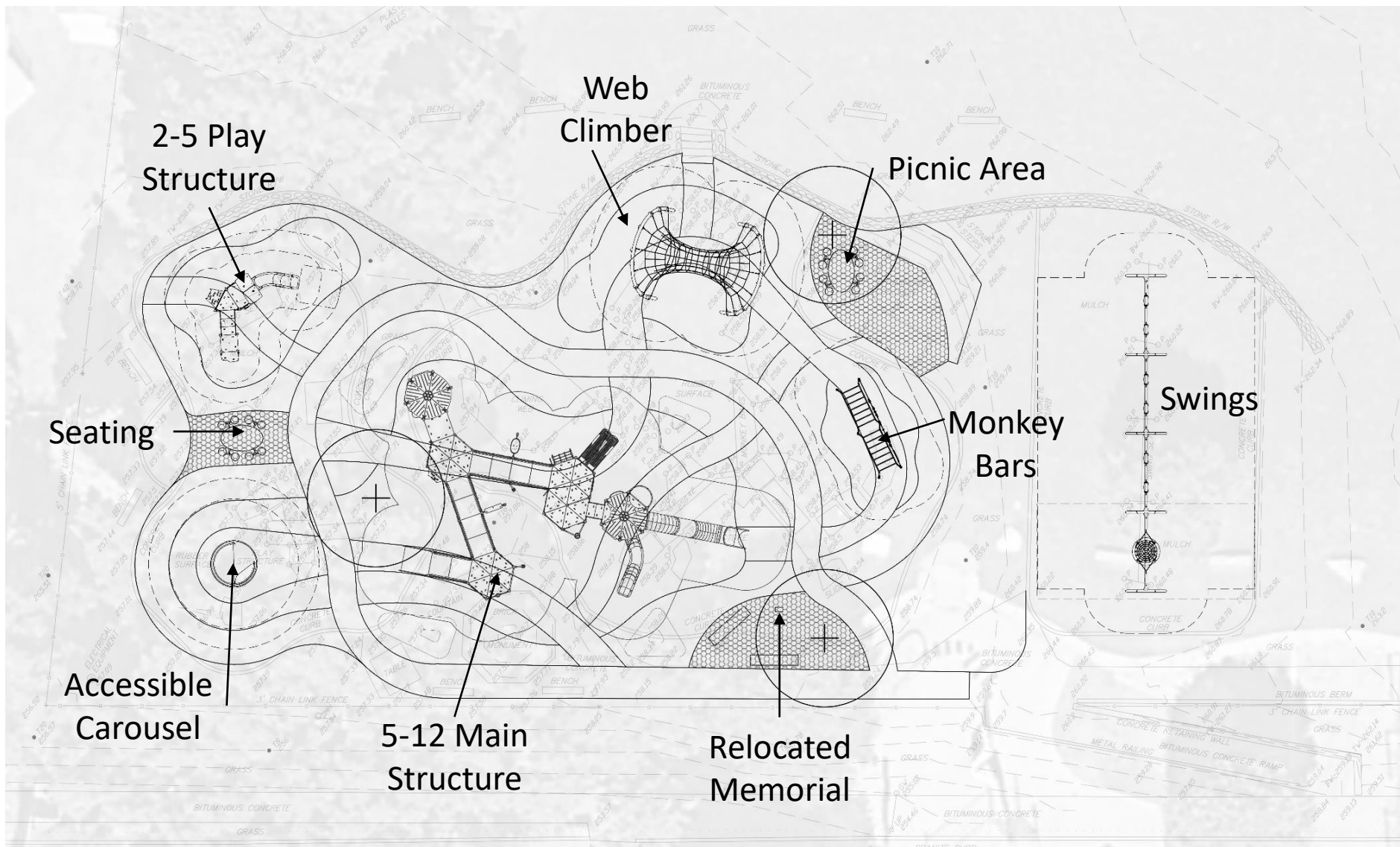
Monkey
Bars with
Sensory
Panels



Basket
Swing



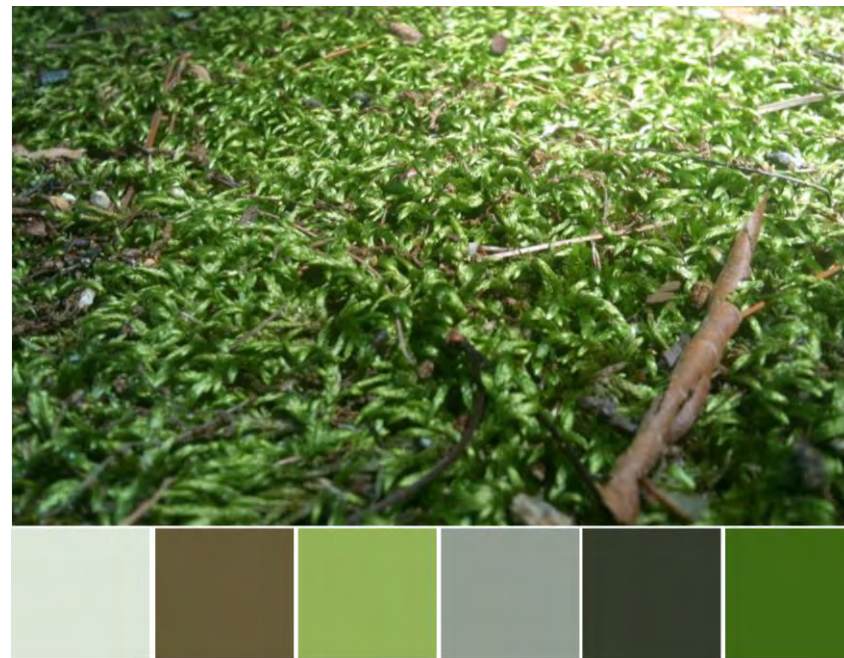
Revised Site Design





Playground Design and Color Inspiration

Existing shade trees, curved stone wall -> meandering nodes



Proposed structure (Tree house, colors) -> Nature



Rendered Design - "TRAILS"





Rendered Design - "TRAILS" - Zoomed In



- Amphitheater/Plaza
- Swings
- Arc Tunnel
- 2-5 Play Structure
- Monkey Bars & Panels
- Picnic Area
- 5-12 Main Structure
- Carousel Spinner
- Relocated Memorial
- Concrete Walking Loop



Feedback / Questions





Next Steps

- Final Cost Estimates and Adjustments to Proposed Design
- Final Design Published On Town Website
- Construction Documents and BID Set
- Summer Construction
- Project Completion