

# Stratton School

Playground Design

Community Meeting #2 March 10, 2022



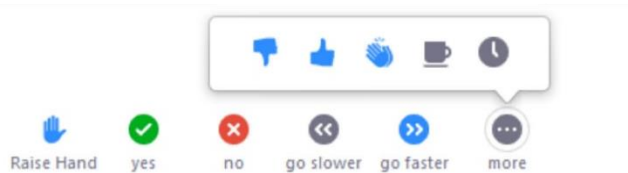


# Zoom Tips

## PRESENTATION:



PLEASE REMAIN MUTED



## NON-VERBAL OPTIONS

CLICK ON PARTICIPANTS (BOTTOM OF SCREEN) AND THESE OPTIONS WILL POP UP IN A SIDE BAR

## Q&A SESSION:



### VIA PHONE

USE \*9 TO RAISE HAND TO ASK QUESTIONS



### VIA WEB

CHAT TO ASK QUESTIONS



### RAISE HAND

FOR QUESTIONS/COMMENTS

*PLEASE BE RESPECTFUL AND COURTEOUS OF ALL PARTICIPANTS WHEN ASKING QUESTIONS OR PROVIDING FEEDBACK SO ALL ATTENDEES ARE ABLE TO PARTICIPATE IN THE MEETING.*



## Project Team

---

**JOE CONNELLY**

DIRECTOR OF RECREATION,  
TOWN OF ARLINGTON

**MIKE HANNA**

PRINCIPAL,  
STRATTON ELEMENTARY SCHOOL

**LESLIE MAYER**

PARKS COMMISSION MEMBER

**EMILY SULLIVAN**

SPECIAL EDUCATION COORDINATOR

**JEN ROTHENBERG**

PARKS COMMISSION MEMBER

**SARA CARRIER**

PARKS COMMISSION MEMBER



# Project Team

---



DAVID WARNER, ASLA  
PRESIDENT / MAIN CONTACT  
PRINCIPAL IN CHARGE



SAMEER BHOITE, PMP  
DESIGN DIRECTOR



EMILY HUNT, ASLA, CPSI  
PROJECT MANAGER



TESSA HALL COMBS  
LANDSCAPE DESIGNER



# Process

---

## PROJECT GOAL

- START CONSTRUCTION THIS SUMMER INTO EARLY FALL
- TIMELINE DESIGNED WITH THIS GOAL
- EXPEDIENT DESIGN PROCESS

## COMMUNITY INPUT

- ✓ SURVEY
- ✓ PUBLIC MEETING #1 FEB 17 2022
- ✓ MEETING WITH STUDENTS AFTER VACATION
- SECOND PUBLIC DESIGN INPUT MEETING TO REVIEW FINAL DESIGN RECOMMENDATIONS MARCH 10th

## TONIGHT'S MEETING

- BISHOP 6 PM, PEIRCE 7 PM, [STRATTON 8 PM](#)



## PLAYGROUND RENOVATION ONLY

- FOCUS ON PLAYGROUND RENOVATION ONLY
- ARPA (AMERICAN RESCUE PLAN ACT FUNDS) – ESTIMATING \$1.8 MILLION
- NOT A FULL PARK RENOVATION LIKE OTHER PARK COMMISSION PROJECTS
- KEEPING THIS FOCUS ALONG THE WAY WILL BE DIFFICULT TO DO!

## DESIGN GUIDELINES

- REPLACEMENT OF PLAY EQUIPMENT AND SAFETY SURFACING
- FOCUS ON SCHOOL AGE APPROPRIATE EQUIPMENT (5-12 AGES)
- DURABLE MATERIALS FOR HEAVY USE (PREFERENCE FOR METAL OVER WOOD STRUCTURES)

## TONIGHT'S PRESENTATION

- FINAL DESIGN WALK-THROUGH AND FEEDBACK
- HOLD ALL QUESTIONS UNTIL THE END



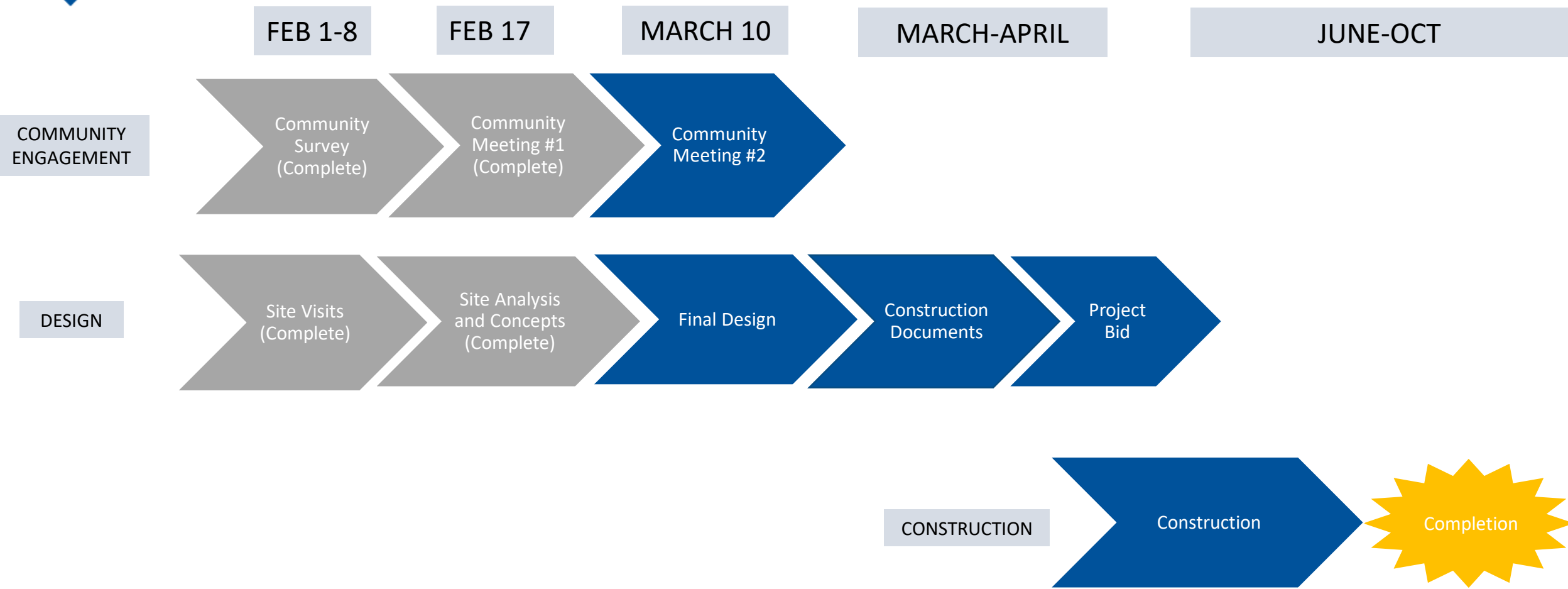
# Agenda

---

1. PROJECT SCHEDULE AND SCOPE
2. MEETING #1 RECAP
3. SCHOOL FEEDBACK
4. PROPOSED DESIGN
5. FEEDBACK
6. NEXT STEPS



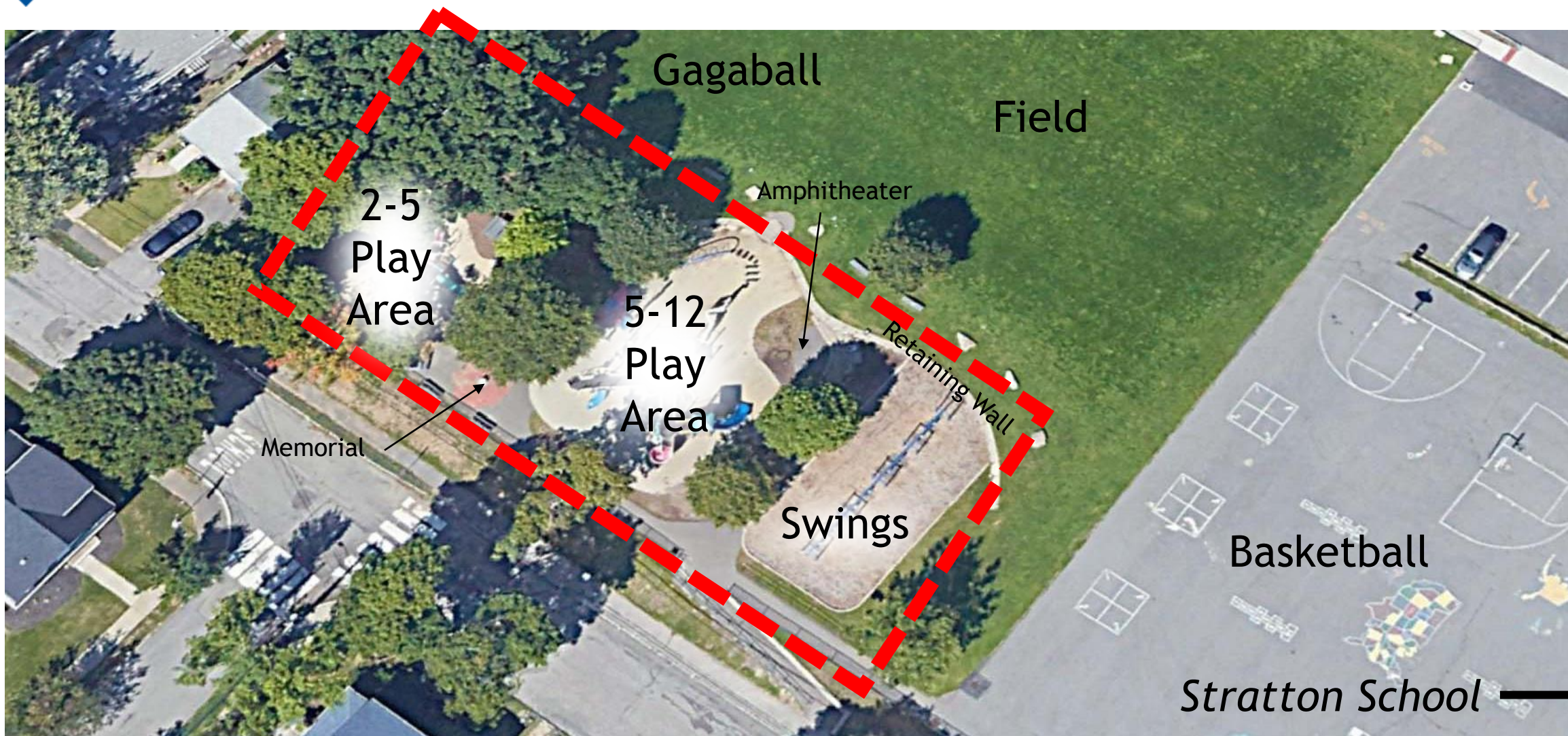
# Project Schedule





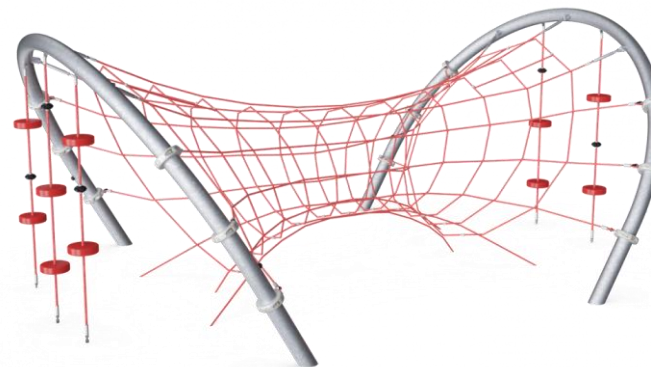


# Stratton Playground Scope





# Community Meeting #1 Play Structure Preference



✓ **CLEAR  
WINNER  
(Menti-meter)**

*Keep the 2-5  
structure and  
swings where  
they are*

*Connect the play  
elements*

*Feedback to see  
more inclusive  
elements  
throughout the  
playground*

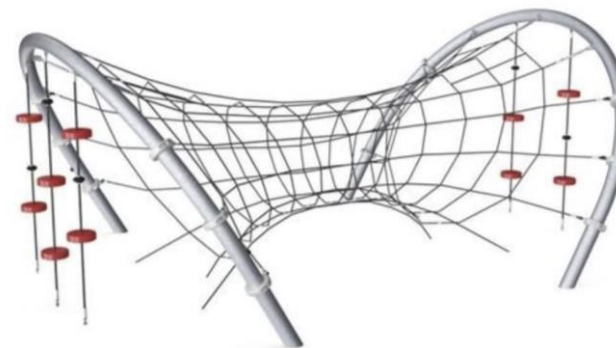


# Other Play Elements

2-5 play structure with ground based play elements



2-12 ADA accessible carousel



Arc Tunnel  
Rope Climbing



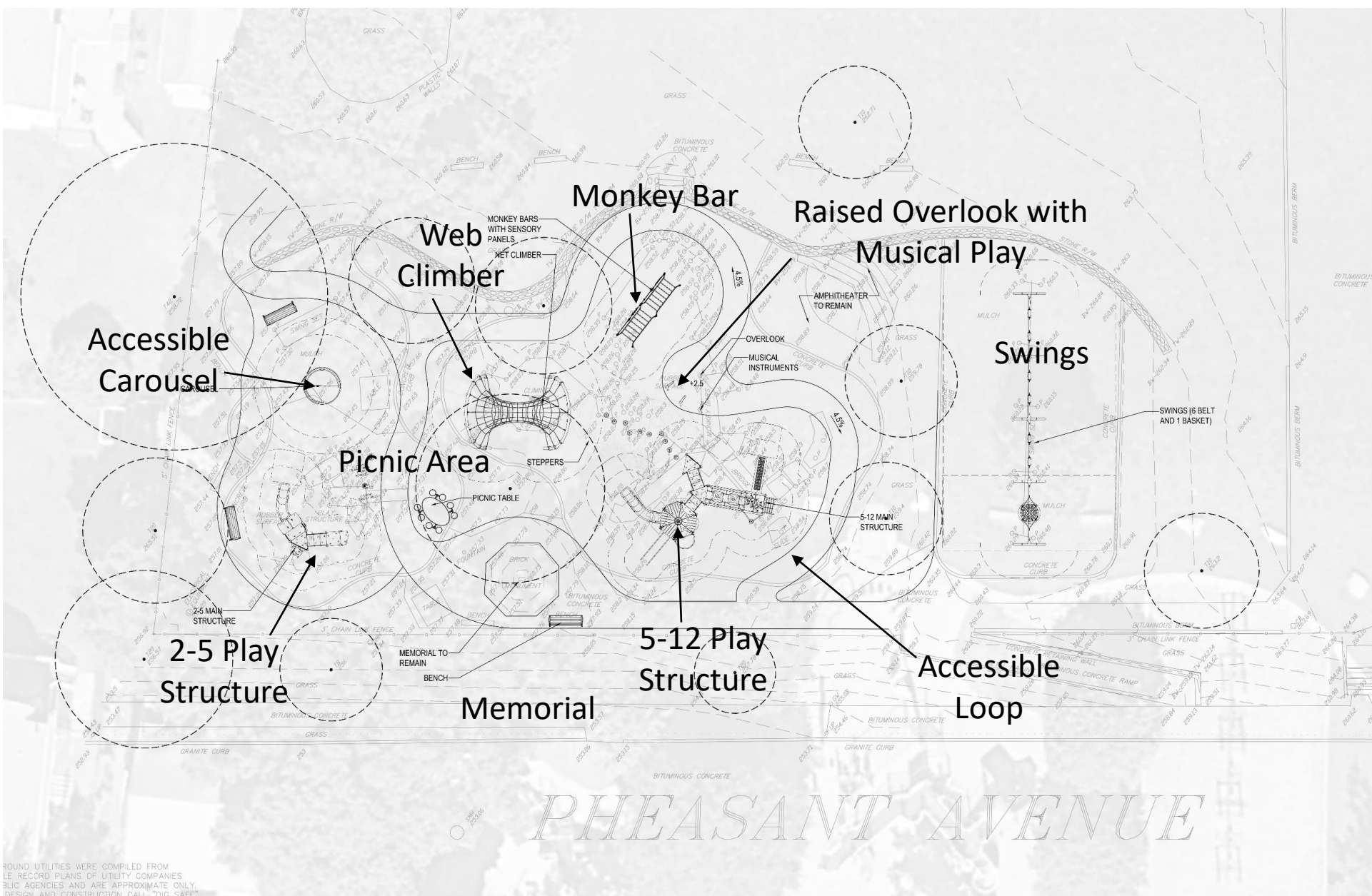
Monkey  
Bars



Basket  
Swing



# Site Design Concept



ROUND UTILITIES WERE COMPILED FROM THE RECORD PLANS OF UTILITY COMPANIES, PUBLIC AGENCIES AND ARE APPROXIMATE ONLY. DESIGN AND CONSTRUCTION CALL "DIG SAFE"



# Revised Play Structure - Ramp Option





# Revised Play Structure - Ramp Option



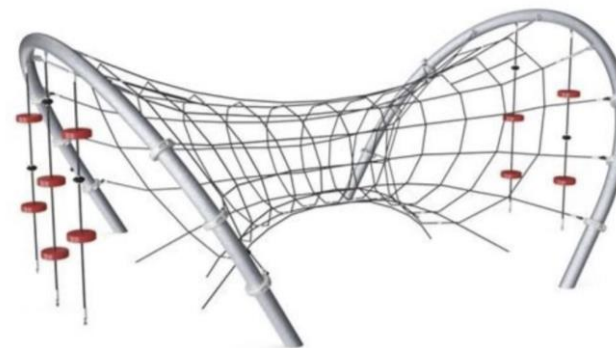


# Revised Proposed Design - Other Play Elements

2-5 play structure with ground based play elements



2-12 ADA accessible carousel



Arc Tunnel  
Rope Climbing



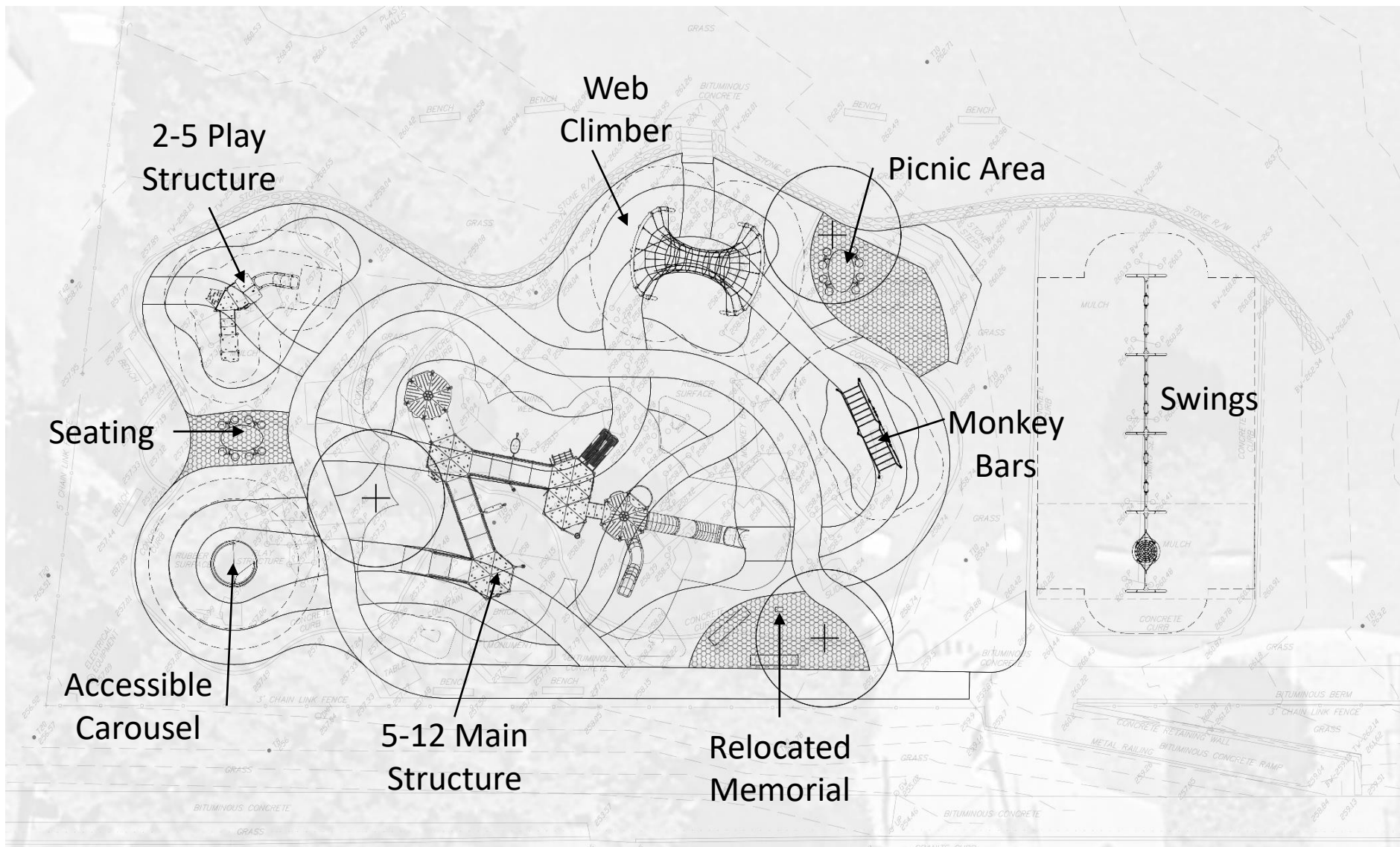
Monkey  
Bars with  
Sensory  
Panels



Basket  
Swing



# Revised Site Design

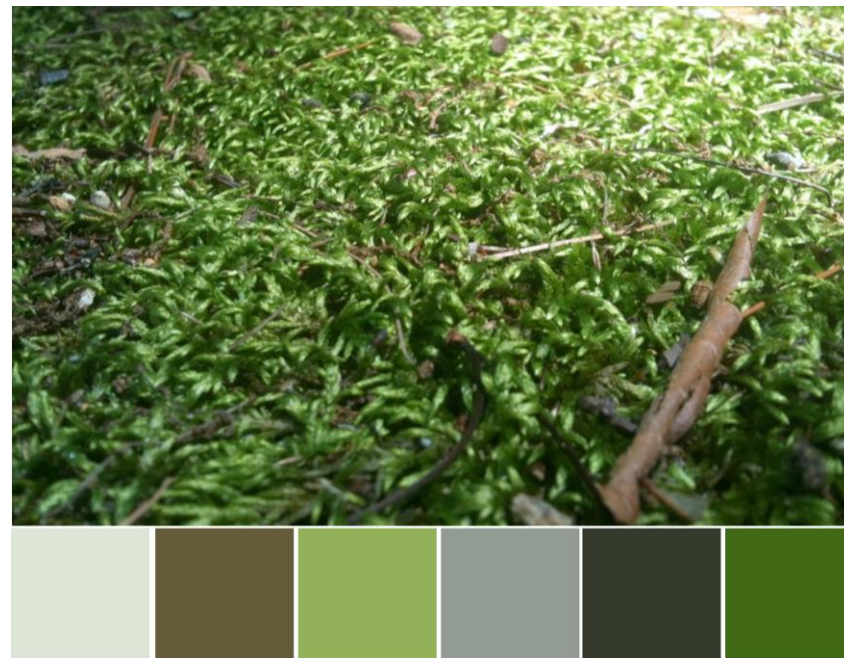






# Playground Design and Color Inspiration

Existing shade trees, curved stone wall -> meandering nodes



Proposed structure (Tree house, colors) -> Nature



# Rendered Design - "TRAILS"





# Rendered Design - "TRAILS" - Zoomed In



- Amphitheater/Plaza
- Swings
- Arc Tunnel
- 2-5 Play Structure
- Monkey Bars & Panels
- Picnic Area
- 5-12 Main Structure
- Carousel Spinner
- Relocated Memorial
- Concrete Walking Loop



# Feedback / Questions





## Next Steps

---

- Final Cost Estimates and Adjustments to Proposed Design
- Final Design Published On Town Website
- Construction Documents and BID Set
- Summer Construction
- Project Completion