

Bishop School

Playground Design

Community Meeting #2 March 10, 2022



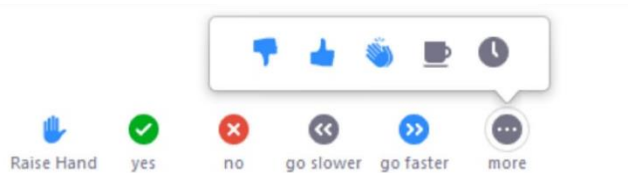


Zoom Tips

PRESENTATION:



PLEASE REMAIN MUTED



NON-VERBAL OPTIONS

CLICK ON PARTICIPANTS (BOTTOM OF SCREEN) AND THESE OPTIONS WILL POP UP IN A SIDE BAR

Q&A SESSION:



VIA PHONE

USE *9 TO RAISE HAND TO ASK QUESTIONS



VIA WEB

CHAT TO ASK QUESTIONS



RAISE HAND

FOR QUESTIONS/COMMENTS

PLEASE BE RESPECTFUL AND COURTEOUS OF ALL PARTICIPANTS WHEN ASKING QUESTIONS OR PROVIDING FEEDBACK SO ALL ATTENDEES ARE ABLE TO PARTICIPATE IN THE MEETING.



Project Team

JOE CONNELLY

DIRECTOR OF RECREATION,
TOWN OF ARLINGTON

MARK MCANEY

PRINCIPAL,
BISHOP ELEMENTARY SCHOOL

LESLIE MAYER

PARKS COMMISSION MEMBER

MARION NOLAN

SPECIAL EDUCATION COORDINATOR

JEN ROTHENBERG

PARKS COMMISSION MEMBER

SARA CARRIER

PARKS COMMISSION MEMBER



Project Team



DAVID WARNER, ASLA
PRESIDENT / MAIN CONTACT
PRINCIPAL IN CHARGE



SAMEER BHOITE, PMP
DESIGN DIRECTOR



EMILY HUNT, ASLA, CPSI
PROJECT MANAGER



TESSA HALL COMBS
LANDSCAPE DESIGNER



Process

PROJECT GOAL

- START CONSTRUCTION THIS SUMMER INTO EARLY FALL
- TIMELINE DESIGNED WITH THIS GOAL
- EXPEDIENT DESIGN PROCESS

COMMUNITY INPUT

- ✓ SURVEY
- ✓ PUBLIC MEETING #1 FEB 17, 2022
- ✓ MEETING WITH STUDENTS AFTER VACATION
- SECOND PUBLIC DESIGN INPUT MEETING TO REVIEW FINAL DESIGN RECOMMENDATIONS MARCH 10th

TONIGHT'S MEETING

- **BISHOP 6 PM**, PEIRCE 7 PM, STRATTON 8 PM



PLAYGROUND RENOVATION ONLY

- FOCUS ON PLAYGROUND RENOVATION ONLY
- ARPA (AMERICAN RESCUE PLAN ACT FUNDS) – ESTIMATING \$1.8 MILLION
- NOT A FULL PARK RENOVATION LIKE OTHER PARK COMMISSION PROJECTS
- KEEPING THIS FOCUS ALONG THE WAY WILL BE DIFFICULT TO DO!

DESIGN GUIDELINES

- REPLACEMENT OF PLAY EQUIPMENT AND SAFETY SURFACING
- FOCUS ON SCHOOL AGE APPROPRIATE EQUIPMENT (5-12 AGES)
- DURABLE MATERIALS FOR HEAVY USE (PREFERENCE FOR METAL OVER WOOD STRUCTURES)

TONIGHT'S PRESENTATION

- PROPOSED FINAL DESIGN WALK THROUGH AND FEEDBACK
- HOLD ALL QUESTIONS UNTIL THE END



Agenda

1. PROJECT SCHEDULE AND SCOPE
2. MEETING #1 RECAP
3. SCHOOL FEEDBACK
4. PROPOSED DESIGN
5. FEEDBACK
6. NEXT STEPS



Project Schedule

FEB 1-8

FEB 17

MARCH 10

MARCH-APRIL

JUNE-OCT

COMMUNITY
ENGAGEMENT



DESIGN

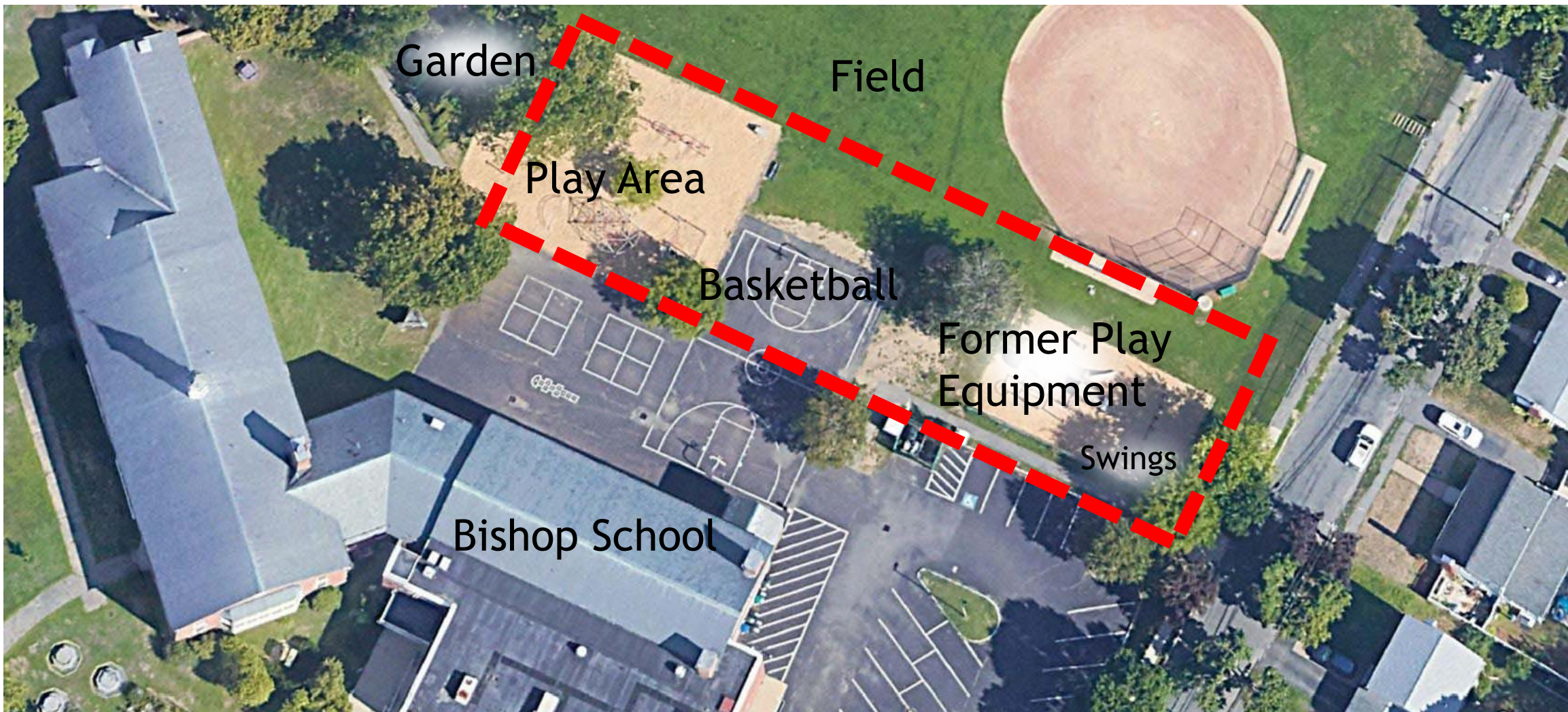


CONSTRUCTION





Bishop Playground Scope





Community Meeting #1 Play Structure Preference

Preferred Structure



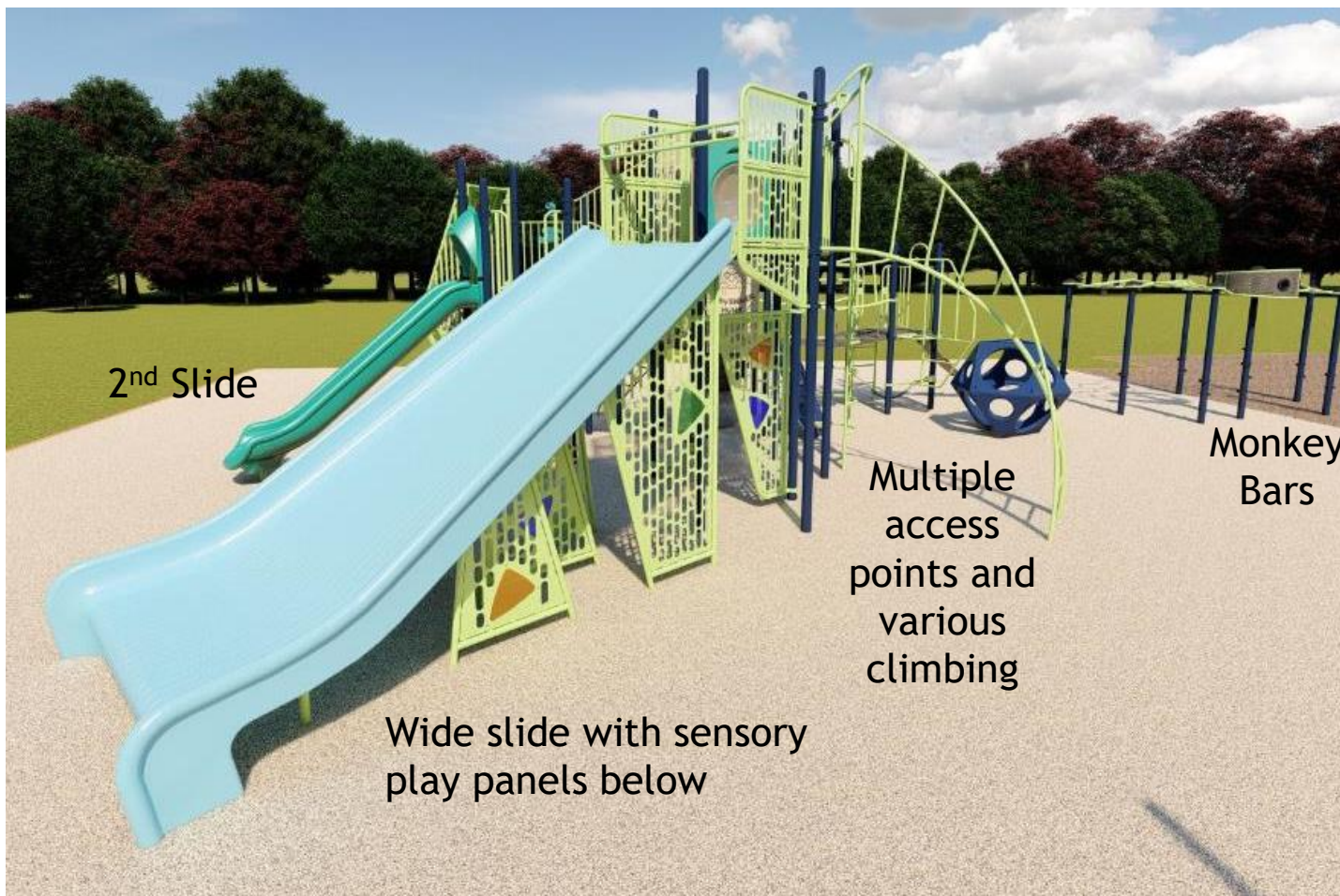
Other decisions

Keep basketball court (close to existing size)

Utilize the space behind the baseball backstop (no foul ball concern cited)



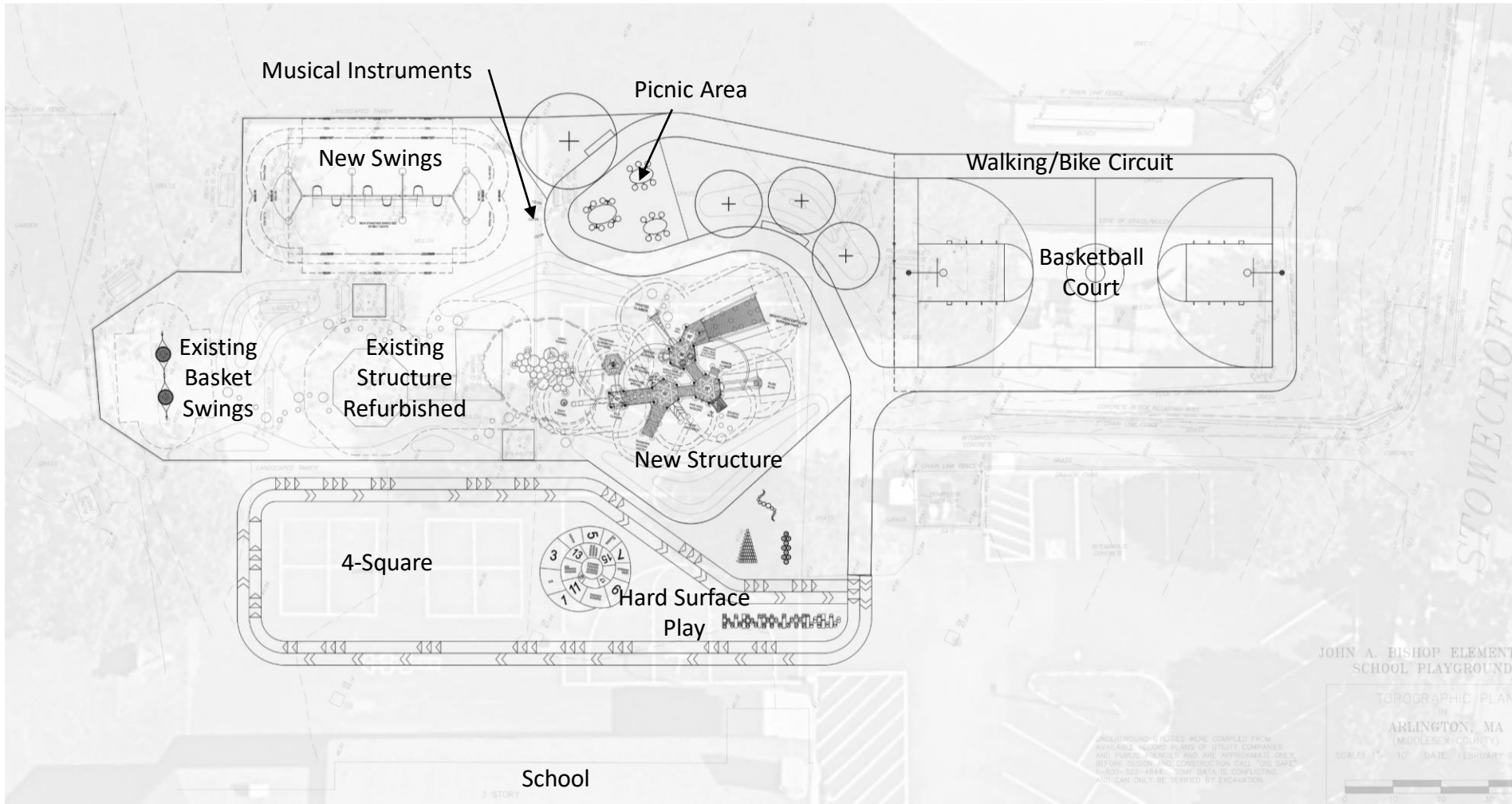
Student/Principal Feedback



- Decision to proceed with this structure
- Keep the new structure close to the existing rope climbing structure (refurbished) and link the play as obstacle
- Basketball court can go behind baseball
- Like to have a group see-saw (**Limited Space does not allow it**)



Proposed Design





Proposed Design Color and Concept Inspiration

Fun and cheerful for the connected play course/obstacle

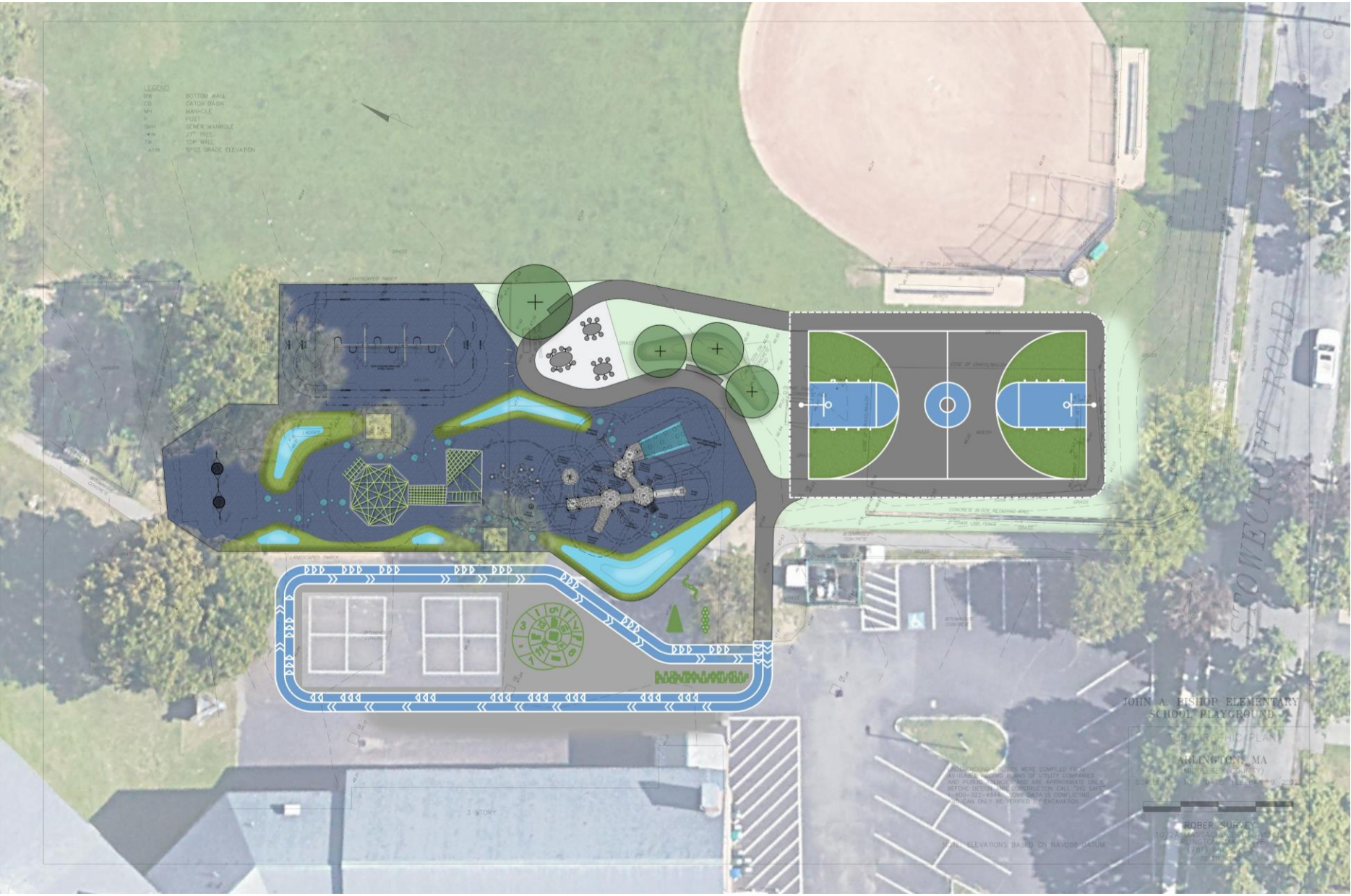


High visual contrast at elevation change

Work with existing rope structure to feel connected

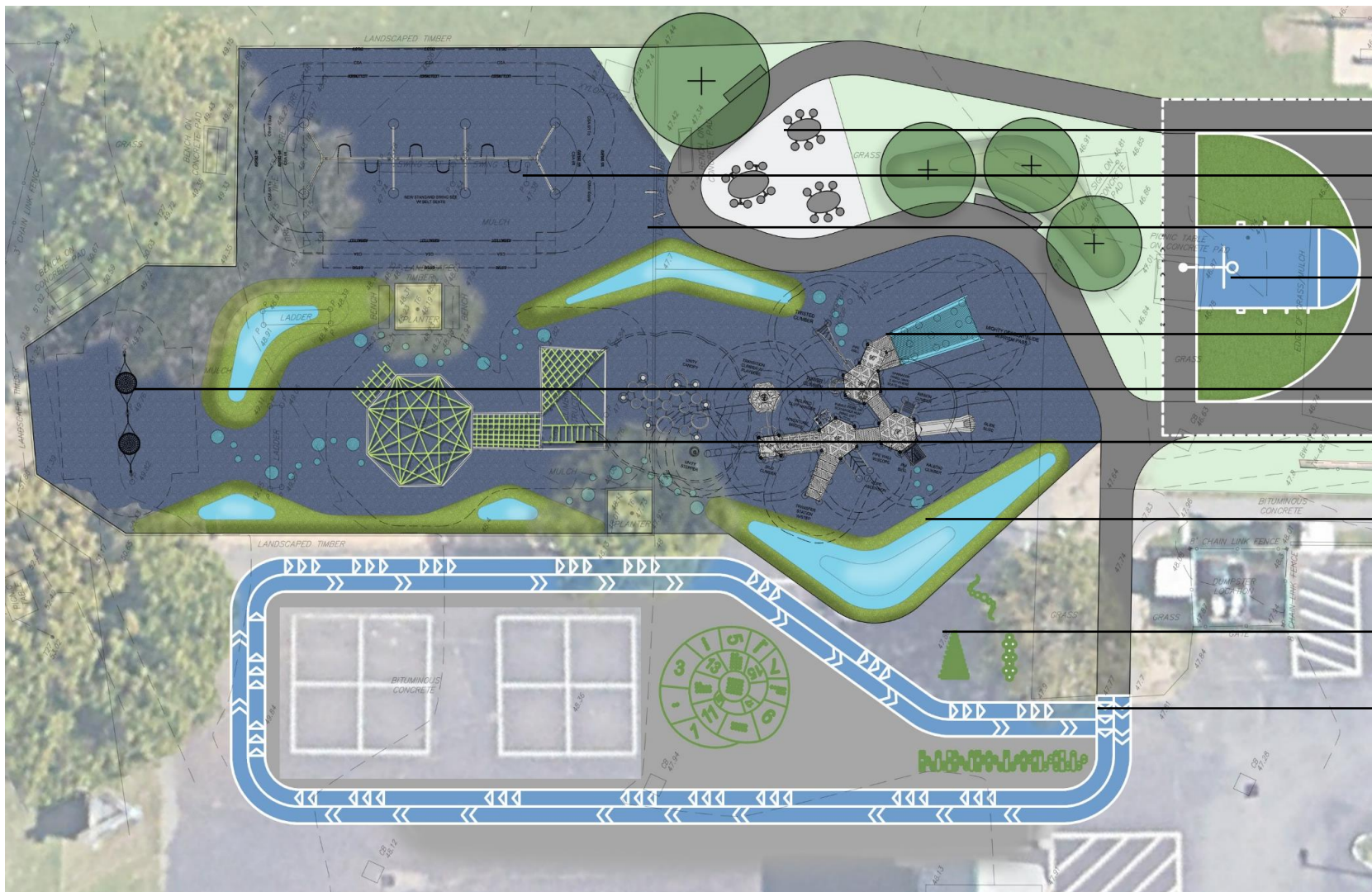


Rendered Design - "Circuit"





Rendered Design - "Circuit" - Zoomed In

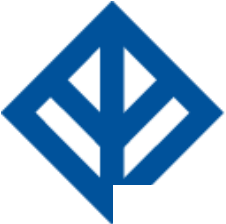


- Picnic Area
- Swings
- Musical Instruments
- Basketball Court
- 5-12 Structure
- Existing Basket Swings
- 5-12 Refurbished Structure
- Play Mounds and Obstacle Course
- Painted Counting Games
- Running Track (painted asphalt)



Linked Play (Color Scheme)





More New Play Structure Views





More New Play Structure Views





Additional Play Features



Play Mounds

Obstacle Course

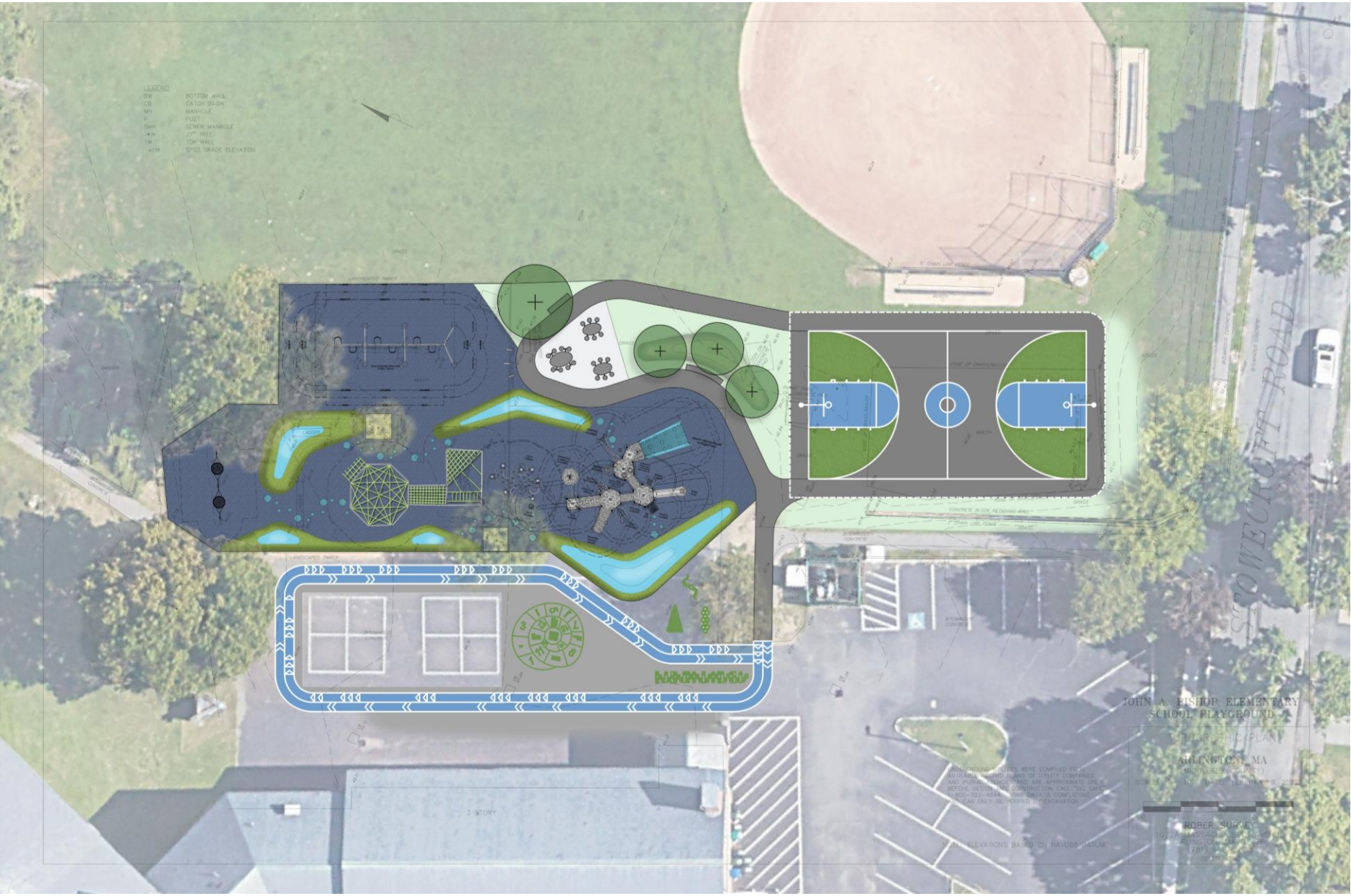


Musical Instruments





Feedback / Questions





Next Steps

- Final Cost Estimates and Adjustments to Proposed Design
- Final Design Published On Town Website
- Construction Documents and BID Set
- Summer Construction
- Project Completion