



FOOT of the ROCKS

TOWN OF ARLINGTON

APRIL 14, 2022

7:00 pm via Zoom

RAY DUNETZ LANDSCAPE ARCHITECTURE, INC.

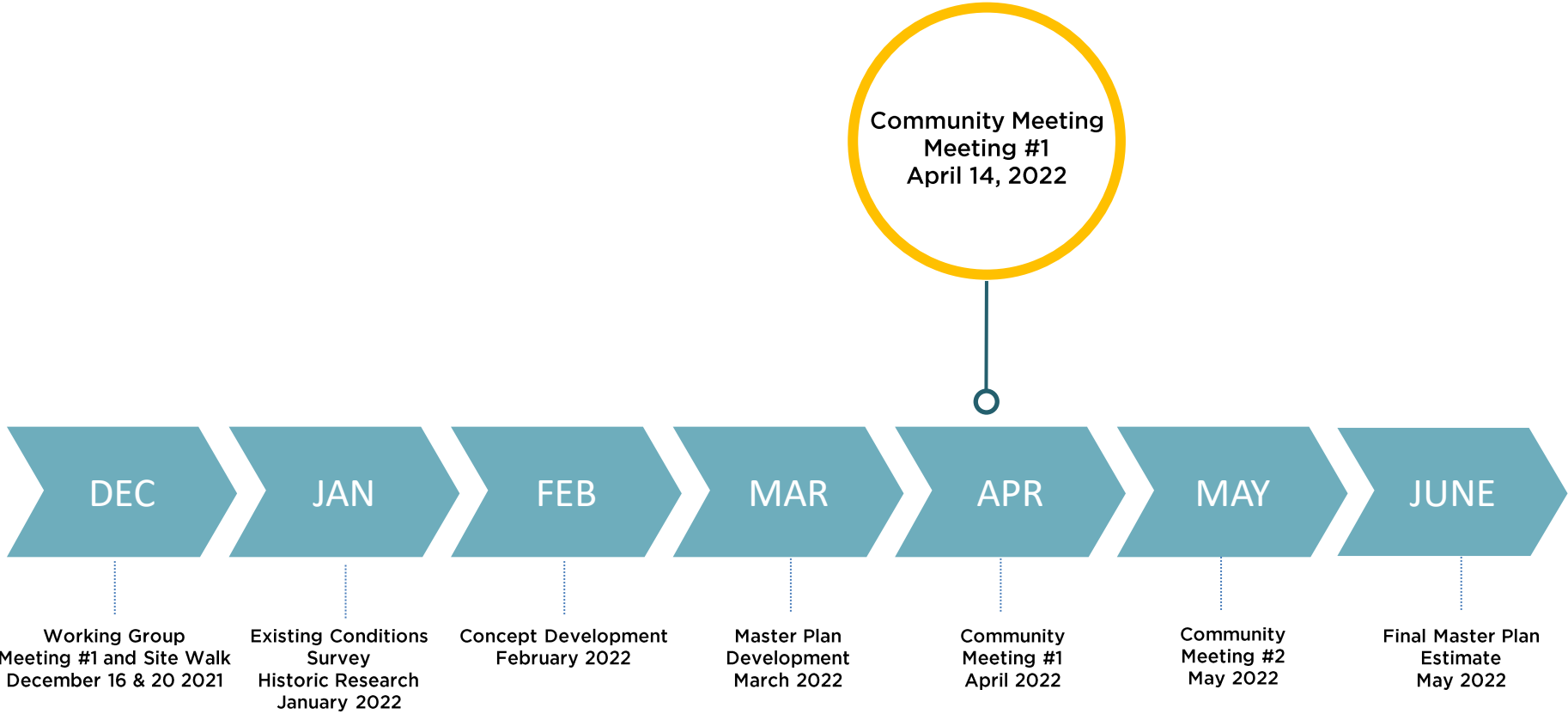
Foot of the Rocks,

AGENDA

Introduction
Timeline
History
Existing Conditions
Concepts
Precedents
Questions & Discussion



TIMELINE



PROJECT GOAL

To properly commemorate the rich **HISTORY** of the space in an inviting manner via the development of conceptual design options derived through a robust public participation process that builds support and consensus for a future project.

HISTORICAL CONTEXT

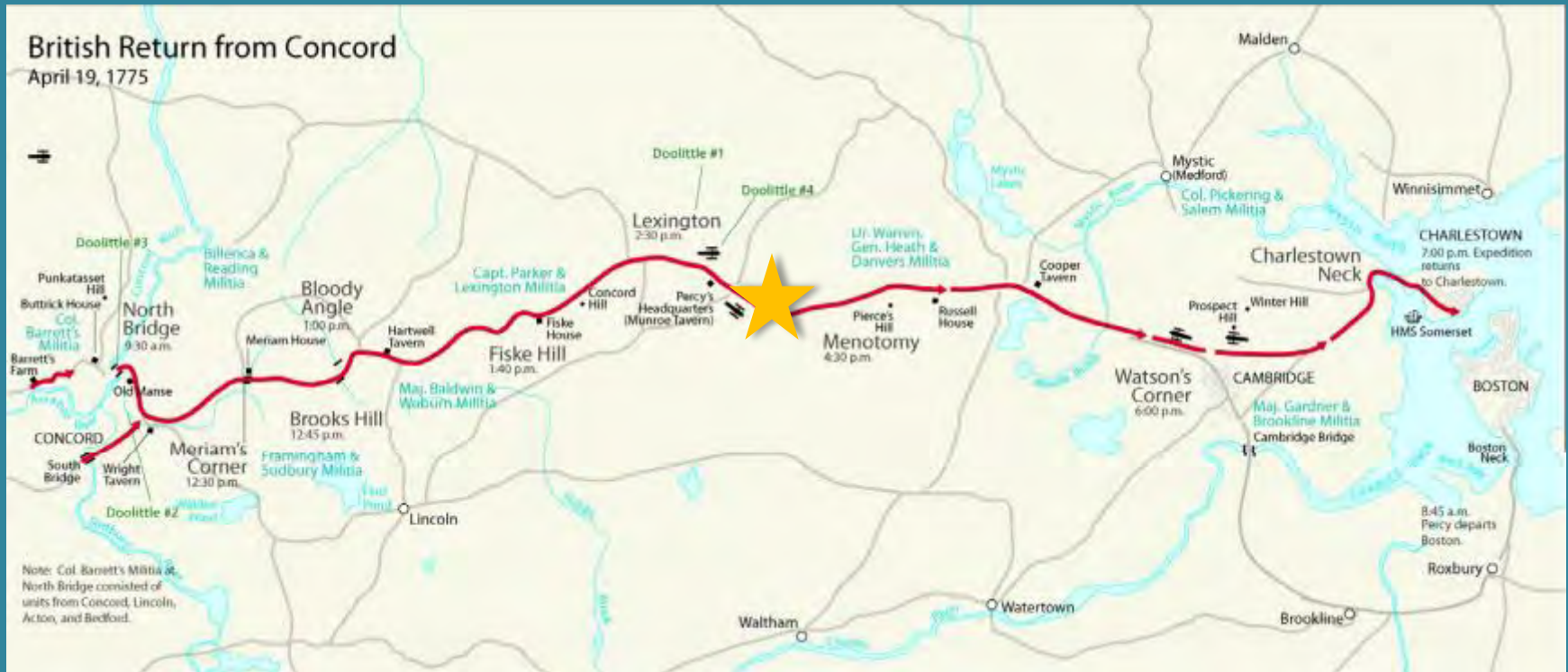


Approximately 1,800 British troops and about the same number of colonial minutemen and militia soldiers fought on this spot on April 19th, 1775 resulting dozens of deaths and an even greater number of casualties.

HISTORICAL CONTEXT

road, we know, was here by 1633. A “community of intelligent and respectable farmers,” as Ben Franklin described our early New Englanders, reached out from the older community, and we had the beginnings of old Menotomy, a name which should never have been lost from our history. In topography its territories were diversified, stretching from the Great Swamp along Menotomy River, now the diminutive and sometimes redolent Alewife Brook separating us from Cambridge, over the level lands at the centre, gradually ascending to the “Foot of the Rocks,”—“The Rocks” of the old proprietor’s records,—and then on to the highlands at the north and west: Turkey Hill, with its twin pines, long a landmark of the mariner sailing into Boston Harbor; Mount Gilboa, a scriptural name now seemingly lost; and that part of the once-named Welsh Mountains which has successively borne the name of Circle Hill, Peirce’s Hill, and Arlington Heights. The territory was heavily wooded, the Indians having cleared little land here before the white settlers came. Squaw Sachem, the peaceful Amazon of the Massachusetts Indians, held sway in this vicinity. For a farcical sum she sold her rights over all this territory, including Cambridge and

HISTORICAL CONTEXT



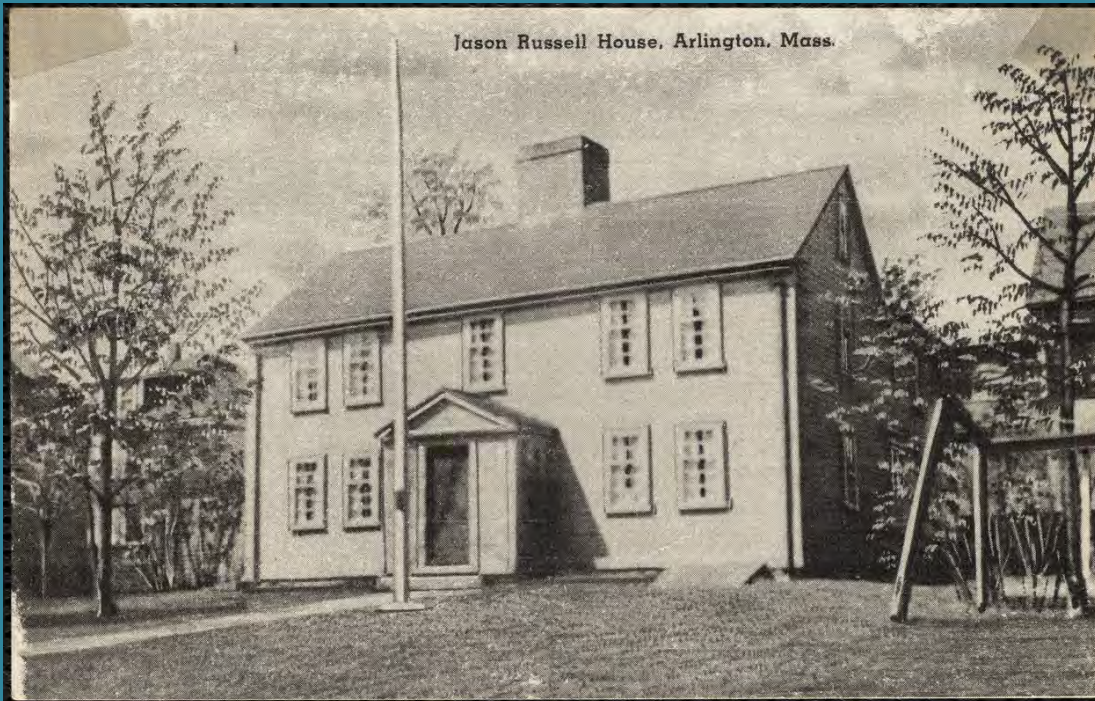
HISTORICAL CONTEXT



HISTORICAL CONTEXT



OLD SCHWAMB MILL

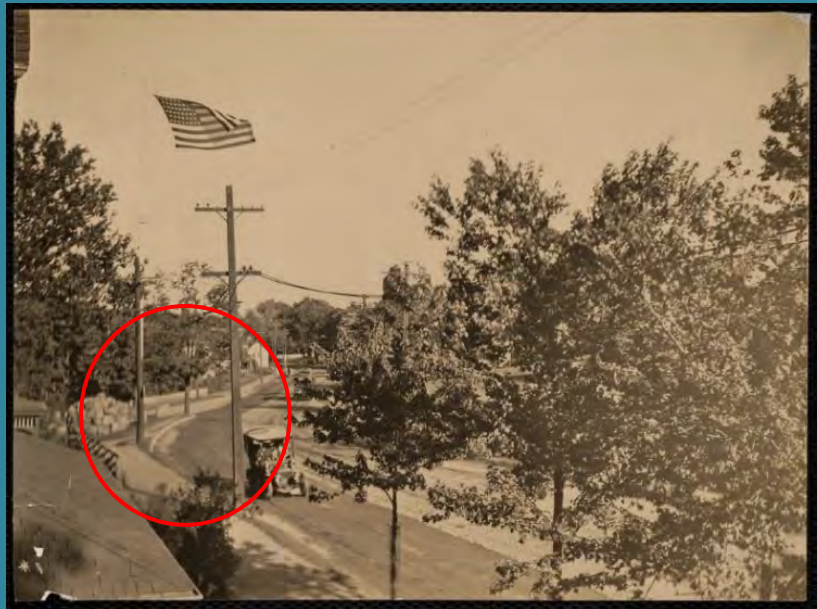


JASON RUSSELL
HOUSE

HISTORICAL CONTEXT



HISTORICAL CONTEXT



EXISTING CONDITIONS



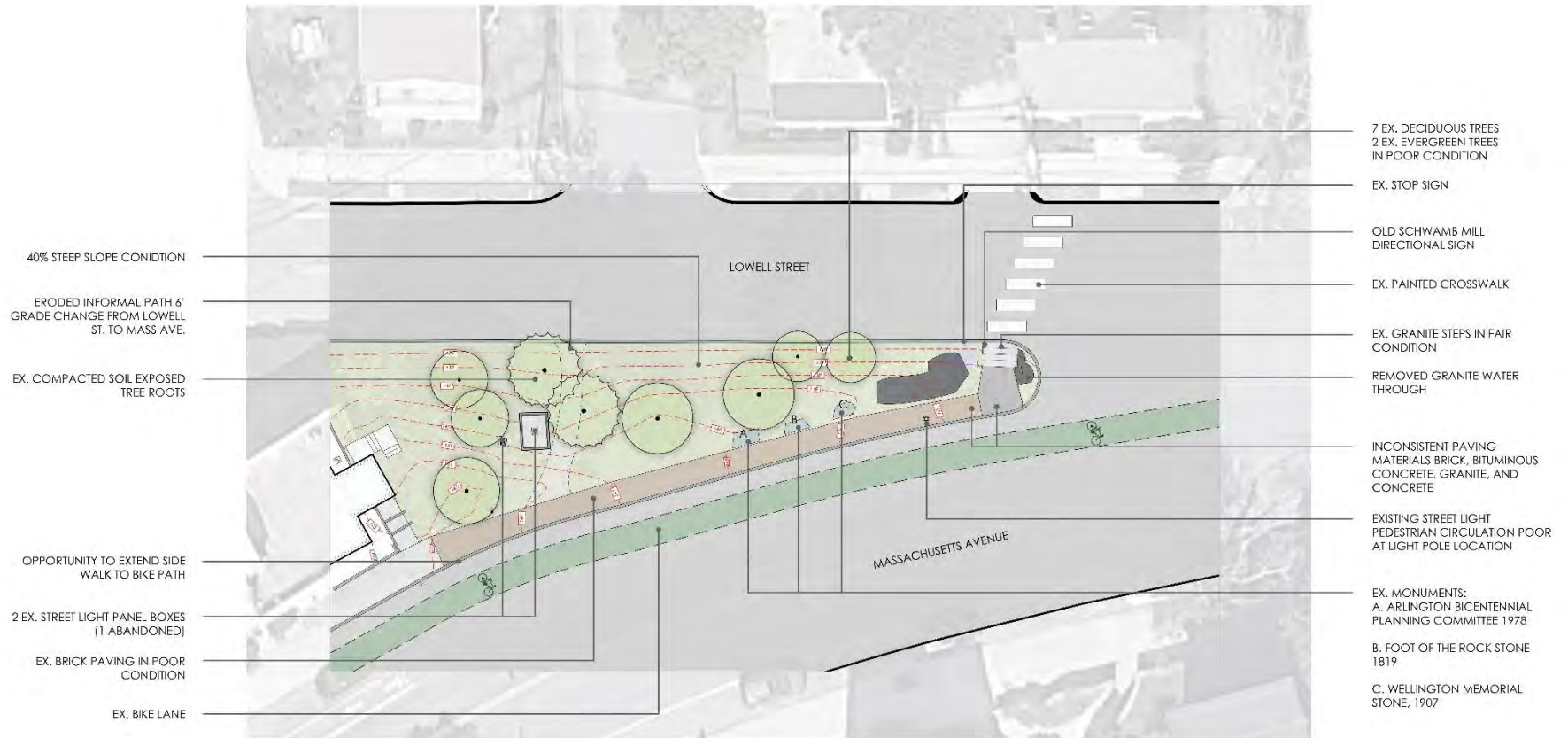
EXISTING CONDITIONS



EXISTING CONDITIONS



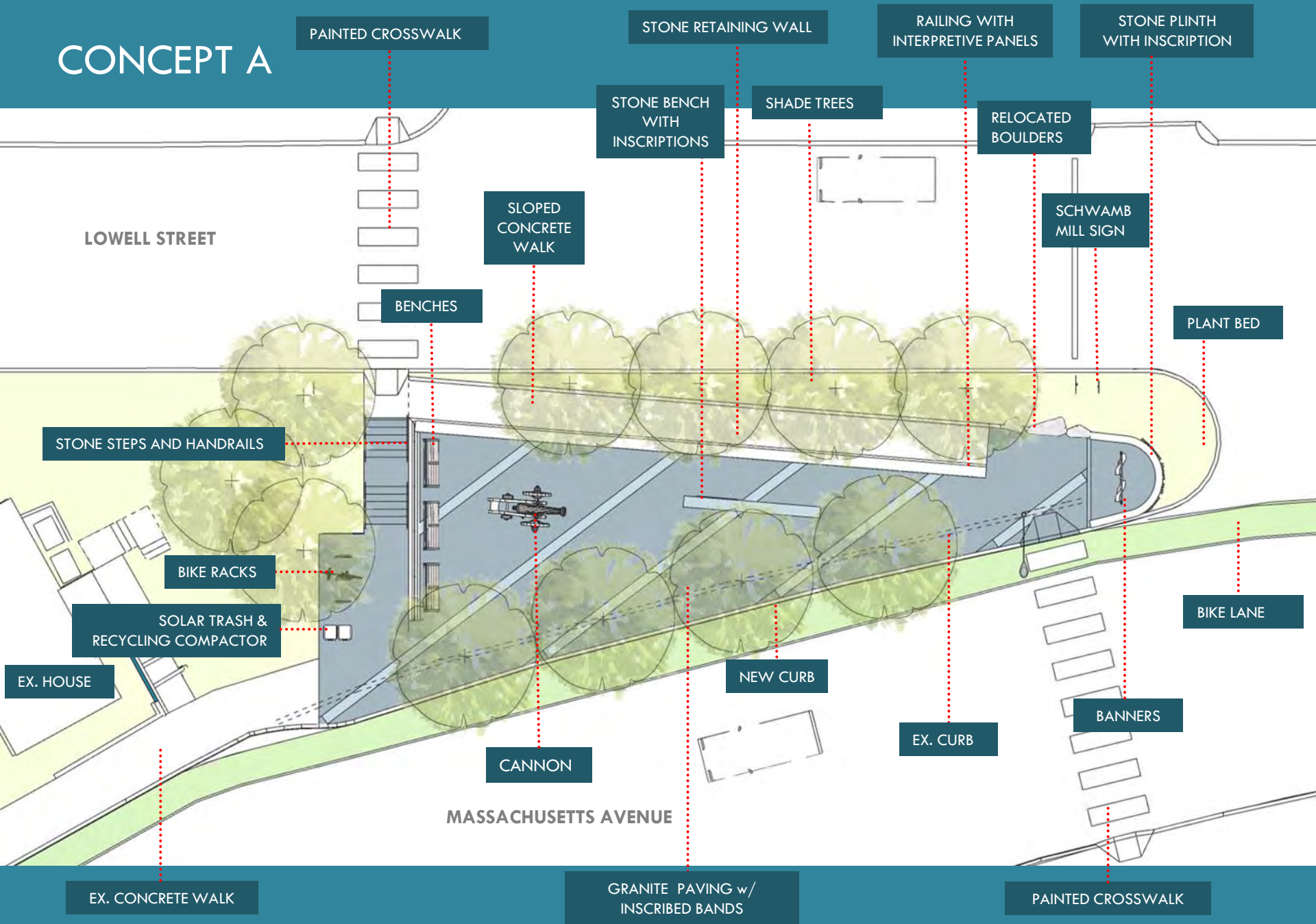
SITE ANALYSIS



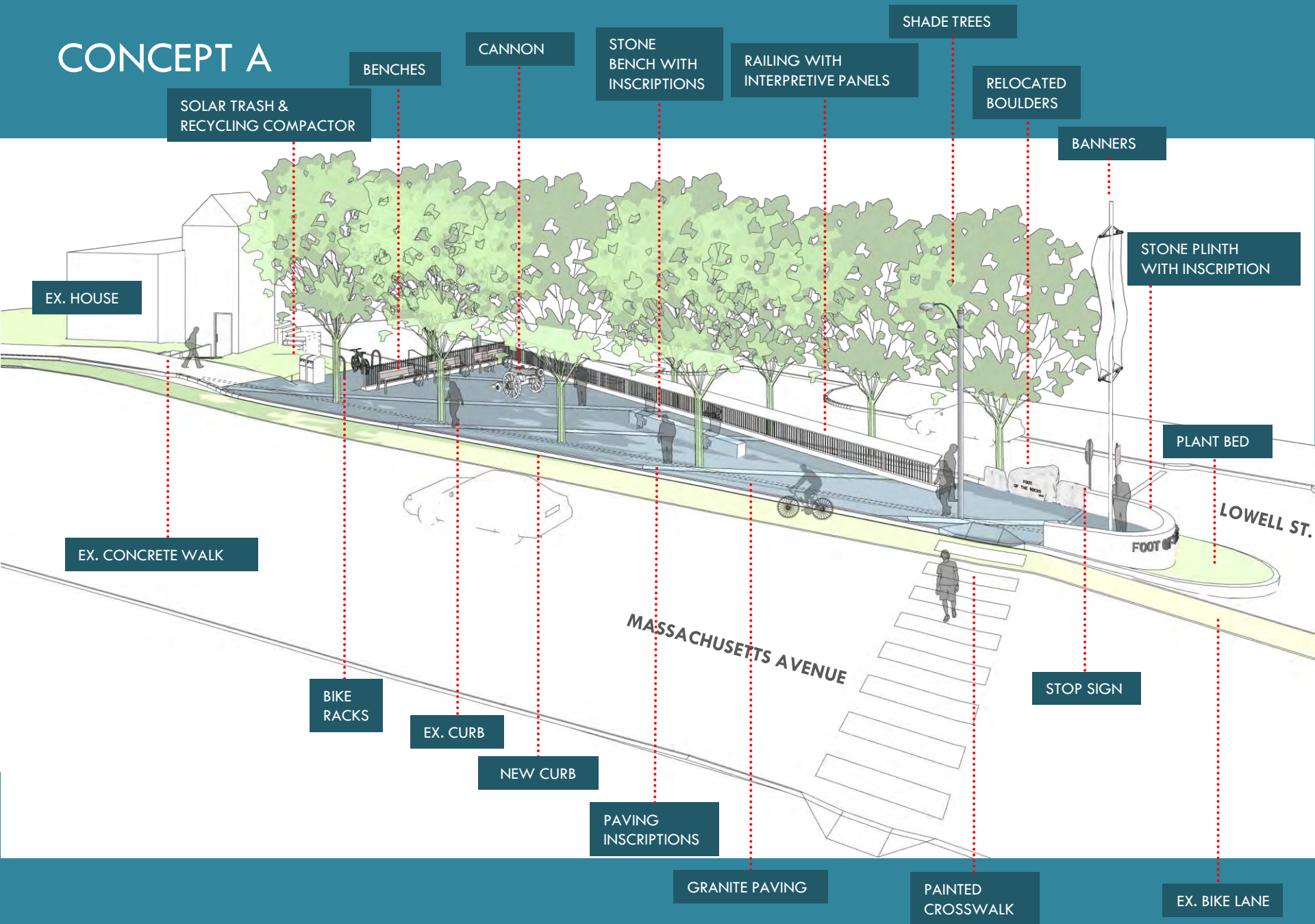
DESIGN OBJECTIVES

- Historic Interpretation
- Accessibility and Safety
- Bus Stop and Gathering Accommodation
- Flexible Space
- Sustainable Approach

CONCEPT A



CONCEPT A



SOLAR TRASH & RECYCLING COMPACTOR

BENCHES

CANNON

STONE BENCH WITH INSCRIPTIONS

RAILING WITH INTERPRETIVE PANELS

SHADE TREES

RELOCATED BOULDERS

BANNERS

STONE PLINTH WITH INSCRIPTION

EX. HOUSE

PLANT BED

EX. CONCRETE WALK

LOWELL ST.

FOOT OF THE ROCK

MASSACHUSETTS AVENUE

BIKE RACKS

STOP SIGN

EX. CURB

NEW CURB

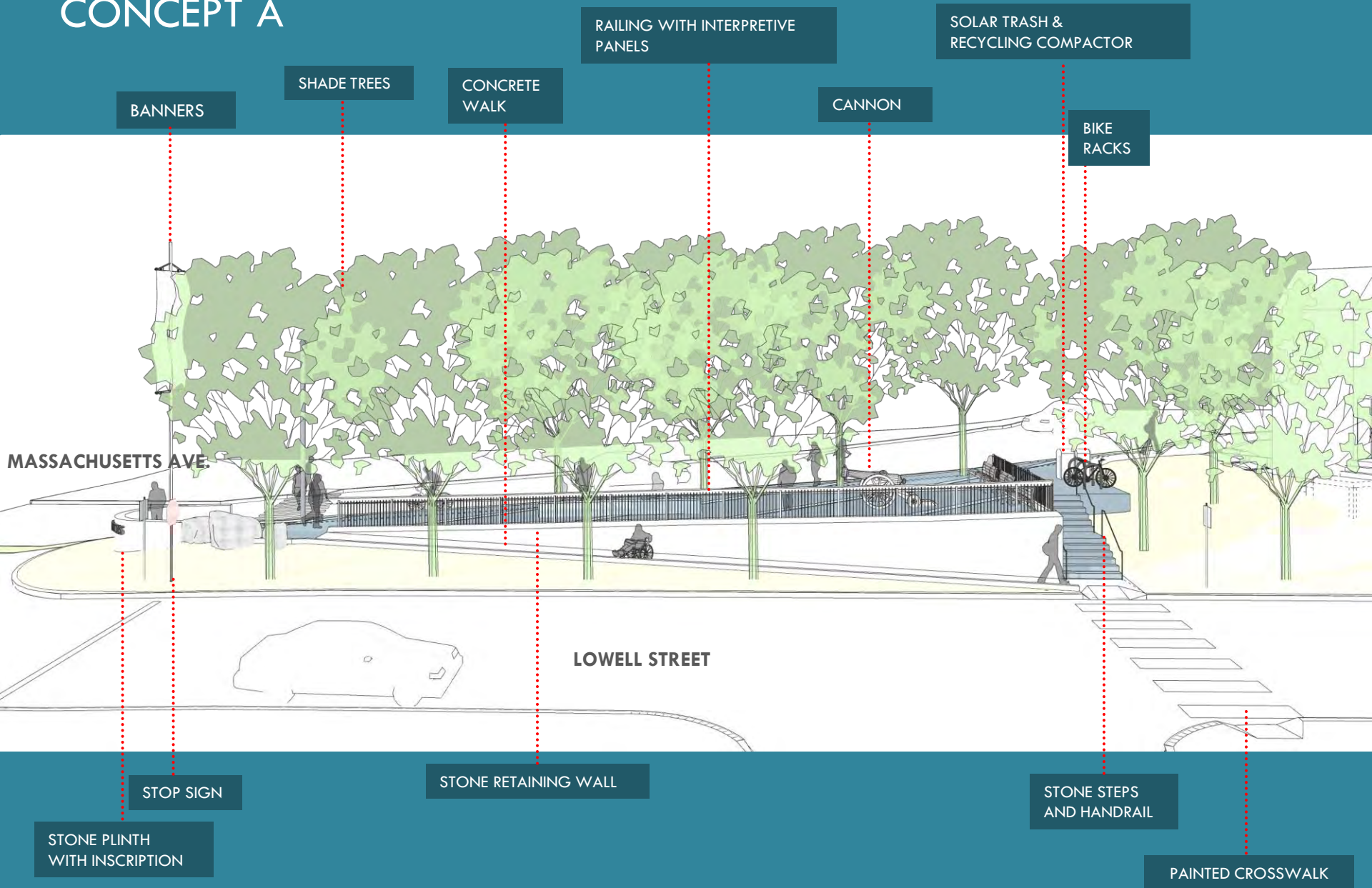
PAVING INSCRIPTIONS

GRANITE PAVING

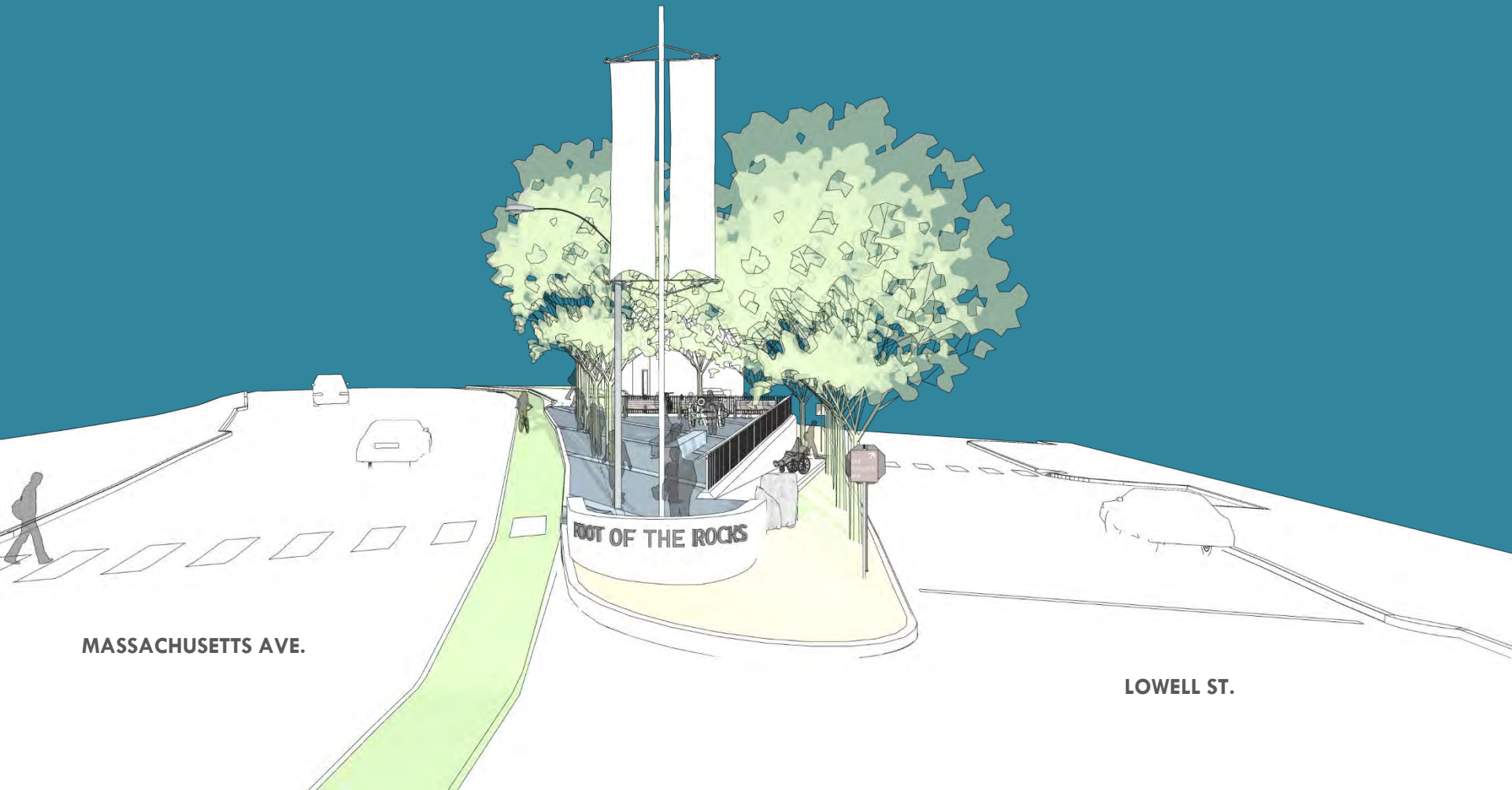
PAINTED CROSSWALK

EX. BIKE LANE

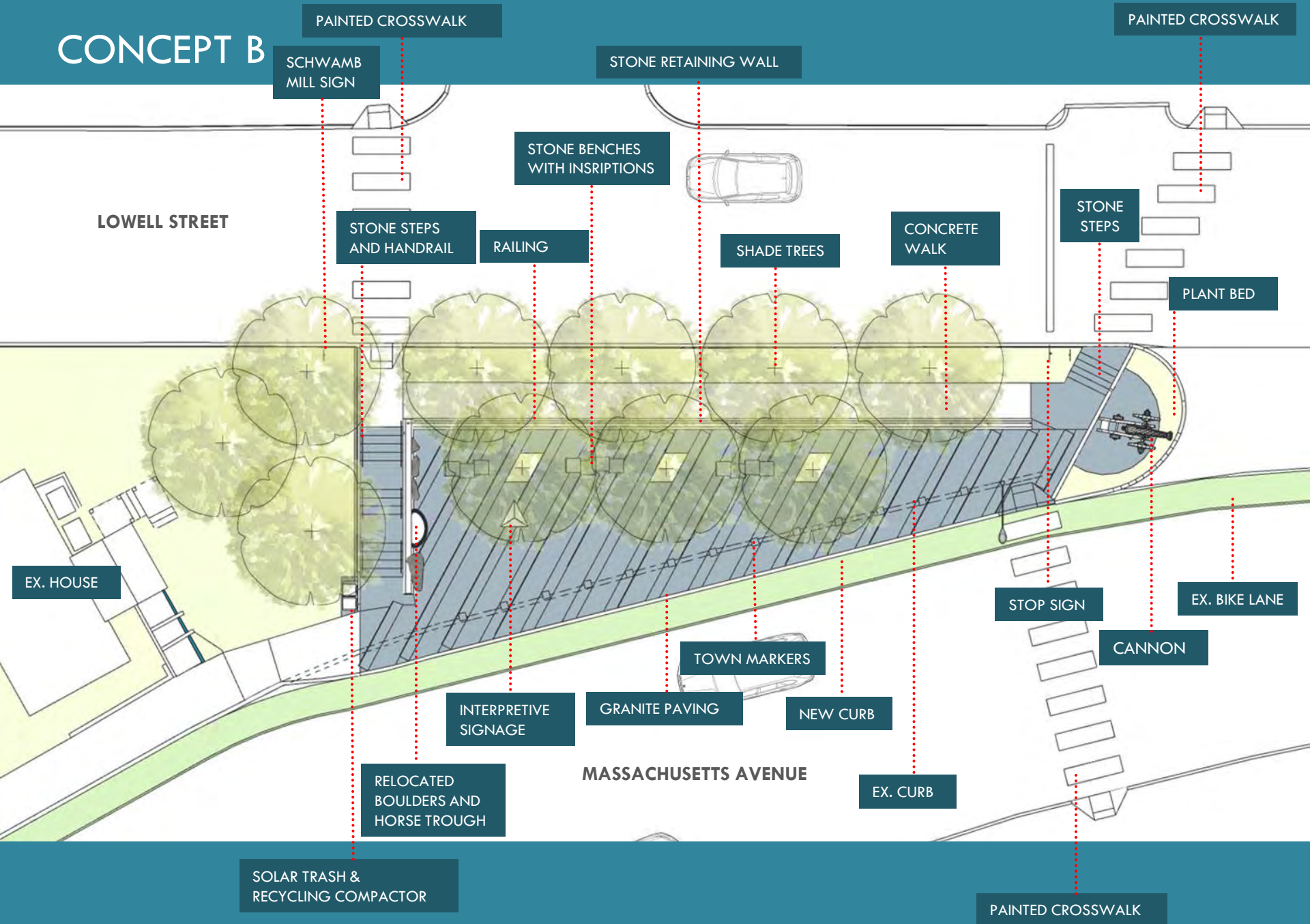
CONCEPT A



CONCEPT A



CONCEPT B



PAINTED CROSSWALK

PAINTED CROSSWALK

SCHWAMB
MILL SIGN

STONE RETAINING WALL

LOWELL STREET

STONE BENCHES
WITH INSCRIPTIONS

STONE STEPS
AND HANDRAIL

RAILING

SHADE TREES

CONCRETE
WALK

STONE
STEPS

PLANT BED

EX. HOUSE

STOP SIGN

EX. BIKE LANE

TOWN MARKERS

CANNON

INTERPRETIVE
SIGNAGE

GRANITE PAVING

NEW CURB

RELOCATED
BOULDERS AND
HORSE TROUGH

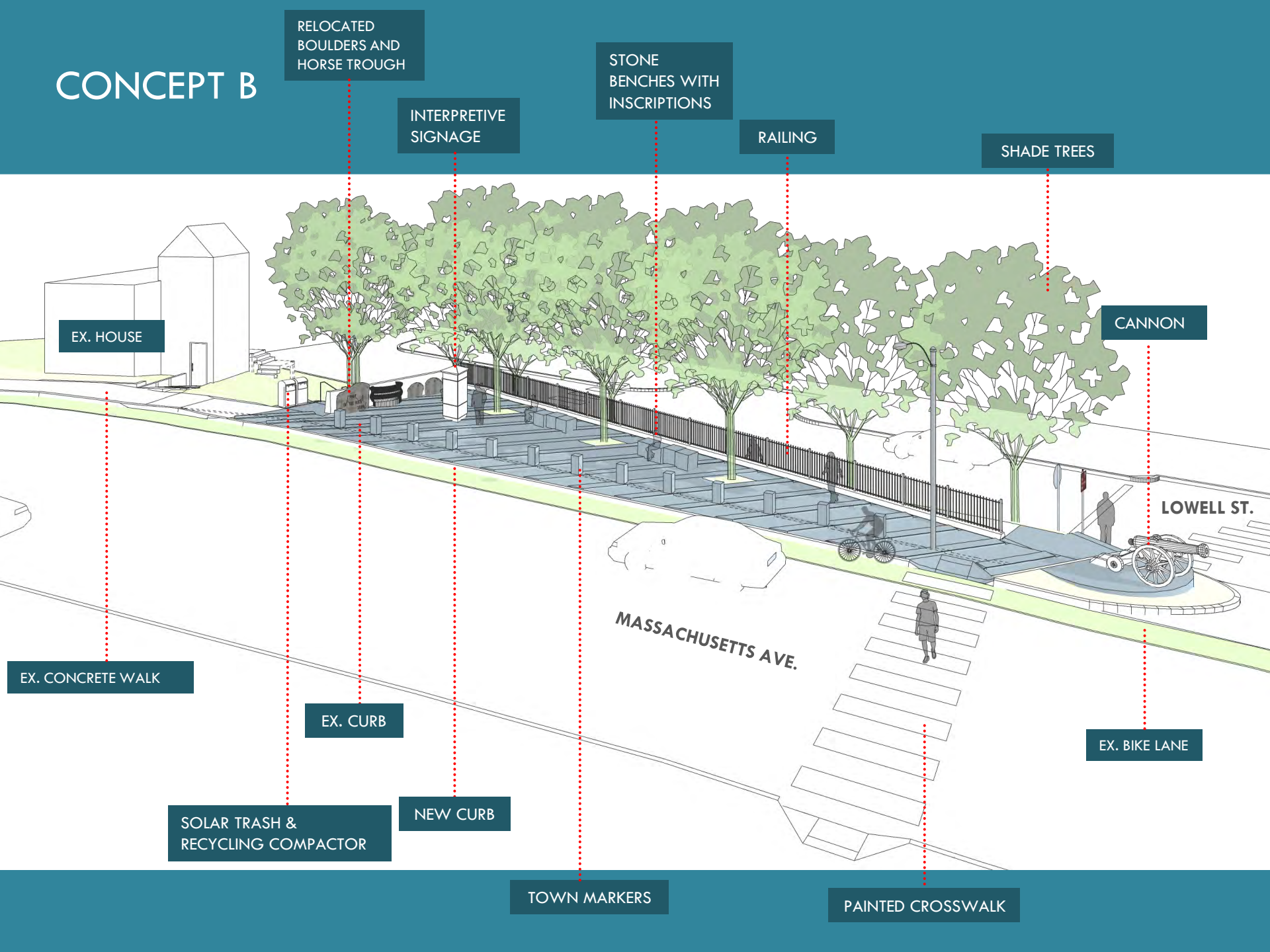
MASSACHUSETTS AVENUE

EX. CURB

SOLAR TRASH &
RECYCLING COMPACTOR

PAINTED CROSSWALK

CONCEPT B



RELOCATED
BOULDERS AND
HORSE TROUGH

STONE
BENCHES WITH
INSCRIPTIONS

INTERPRETIVE
SIGNAGE

RAILING

SHADE TREES

EX. HOUSE

CANNON

LOWELL ST.

MASSACHUSETTS AVE.

EX. CONCRETE WALK

EX. CURB

EX. BIKE LANE

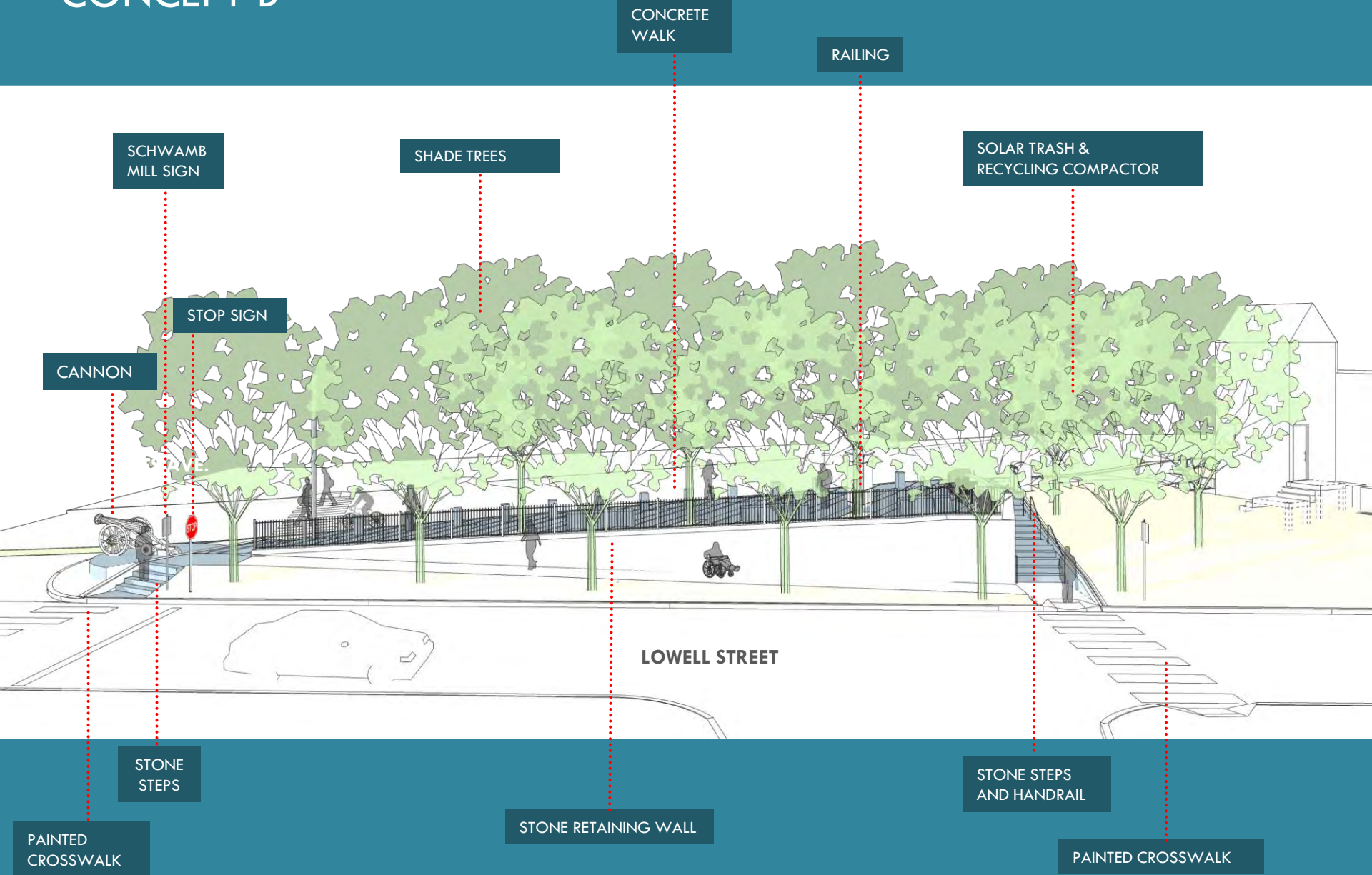
SOLAR TRASH &
RECYCLING COMPACTOR

NEW CURB

TOWN MARKERS

PAINTED CROSSWALK

CONCEPT B



CONCEPT B



MASSACHUSETTS AVE.

LOWELL ST.

PRECEDENT IMAGES

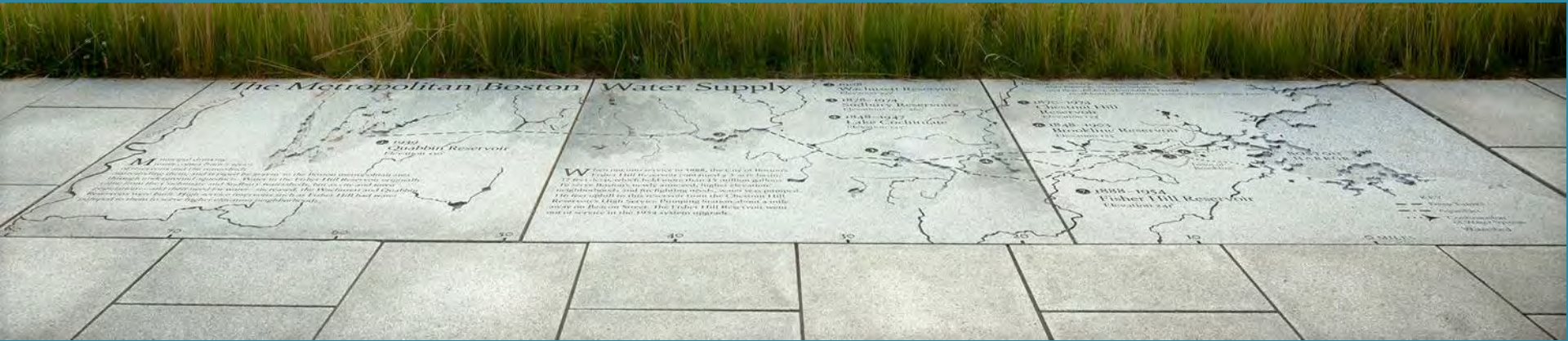
INTERPRETIVE SIGNS



STONE MARKERS



PAVING



WALLS



SEATING



SITE AMENITIES



PLANTING



QUESTIONS & DISCUSSION

THANK YOU!