



ARLINGTON HIGH SCHOOL BUILDING PROJECT

Town Meeting Update

April 2022

www.ahsbuilding.org





Agenda

- Project refresher
- Milestones
- What comes next





Project Refresher

Project Stats

- Project is on budget and on schedule
- Designed for 1,755 students
- \$290.4M total budget
- The amount of the debt exclusion tax increase is expected to be \$100/yr lower than estimated
- \$84.7M from Mass School Building Authority
- Construction 2020 - 2025

Resources

- Project website: www.ahsbuilding.org
- Construction Videos: www.vimeo.com/channels/ahsbuilding

Site Plan



Softball /
Football

Parking

Amphitheater

Schouler Ct

Mass Ave Entry

Mass Ave

Existing
Stadium

New
School

Learning Courtyard

MM Bikeway

MM Bikeway
Access Ramp
(Add Alt)

Baseball /
Soccer

Field Entry

Pre-school

Parking

Mill Brook Dr

50 0 50 100

HM
FH

ARLINGTON HIGH SCHOOL
Arlington, MA
OVERALL SITE PLAN DRAFT
Jan. 31. 2020

HM
FH
HMFH ARCHITECTS

C/S/S
Landscape Architecture
Planning | Urban Design



Overview of Project Phases

Phase	Construction	Where attend school?	When?
1	<i>STEAM* & Performing Arts wings</i>	<i>Old high school</i>	<i>Completed in Feb./April 2022</i>
2	Humanities wing, Central Spine, Cafeteria, Library, Preschool, District offices	In new STEAM & Performing Arts wings and part of old high school	February 2022 - September 2023
3	Athletics wing	In new school plus Red gym	September 2023 to August 2024
4	Finish athletic fields and site work	In new school	August 2024 to April 2025

*Science, Technology, Engineering, Arts and Math



Milestones

- Phase 1 complete
 - Classroom spaces February 28, Auditorium April 25
- Phase 2 commencement
- Community engagement
 - Public and abutter forums, ACMi virtual tour
 - Public tours April 30, 10am-2pm
- Ongoing supply chain challenges



Phase 1: Now open!

- STEAM (Science, Technology, Engineering, Arts & Math) wing
 - 17 regular classrooms, 17 science labs, 5 art studios (including ceramics and digital media)
 - 3 Interdisciplinary maker spaces
 - 120 seat Discourse Lab with technology for a variety of teaching and learning modes.
- Performing Arts wing
 - 826 seat Auditorium, greenroom, stage fly loft with rigging for 25 stage sets
 - Dedicated and enlarged Chorus and Band rooms
 - 8 music practice rooms with recording capability
 - Digital production lab and studio for recordings



Mass. Ave. Entrance

Landscaping coming later this spring



Mass. Ave. Lobby



Debate and Discourse Lab



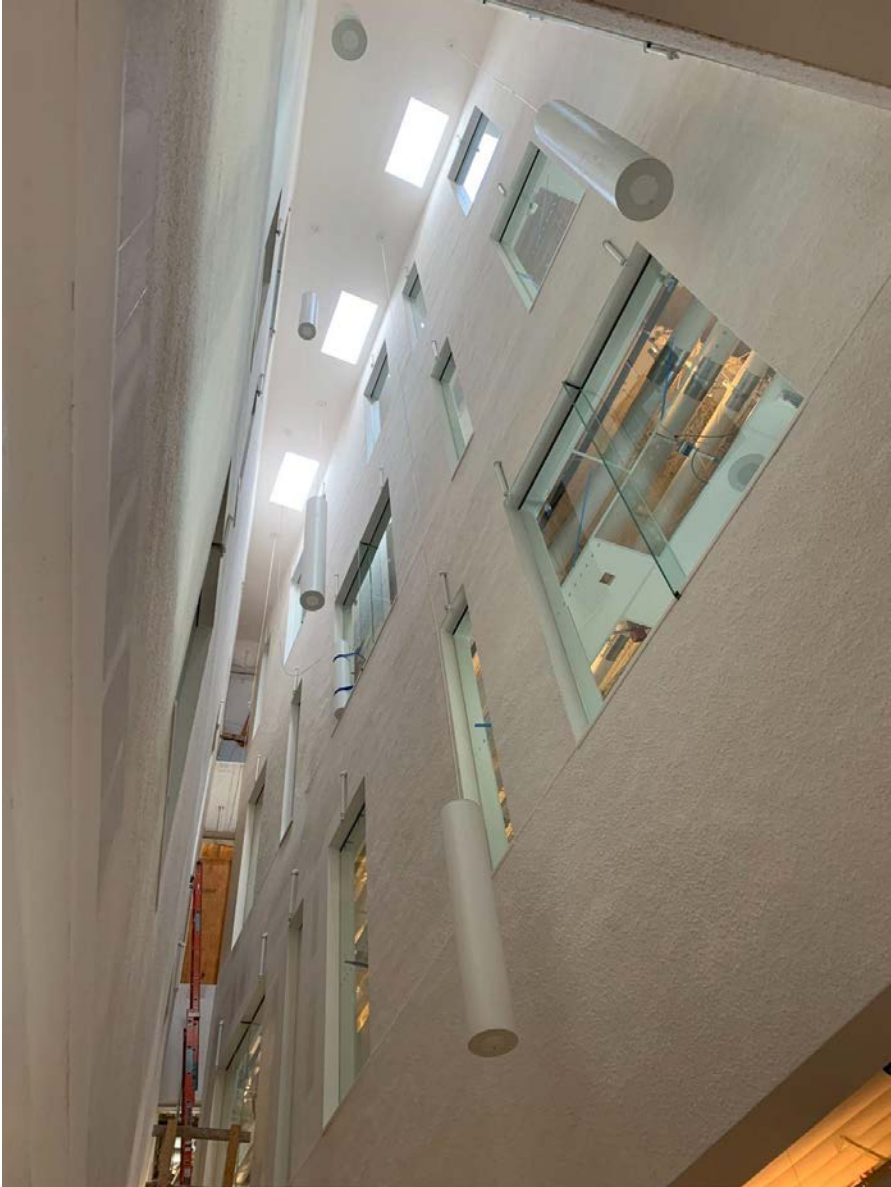
Science Classroom



Math & Art Classrooms



Lightwells



Interdisciplinary Makerspace Shop



Auditorium



Chorus Room and Performing Arts wing stairs

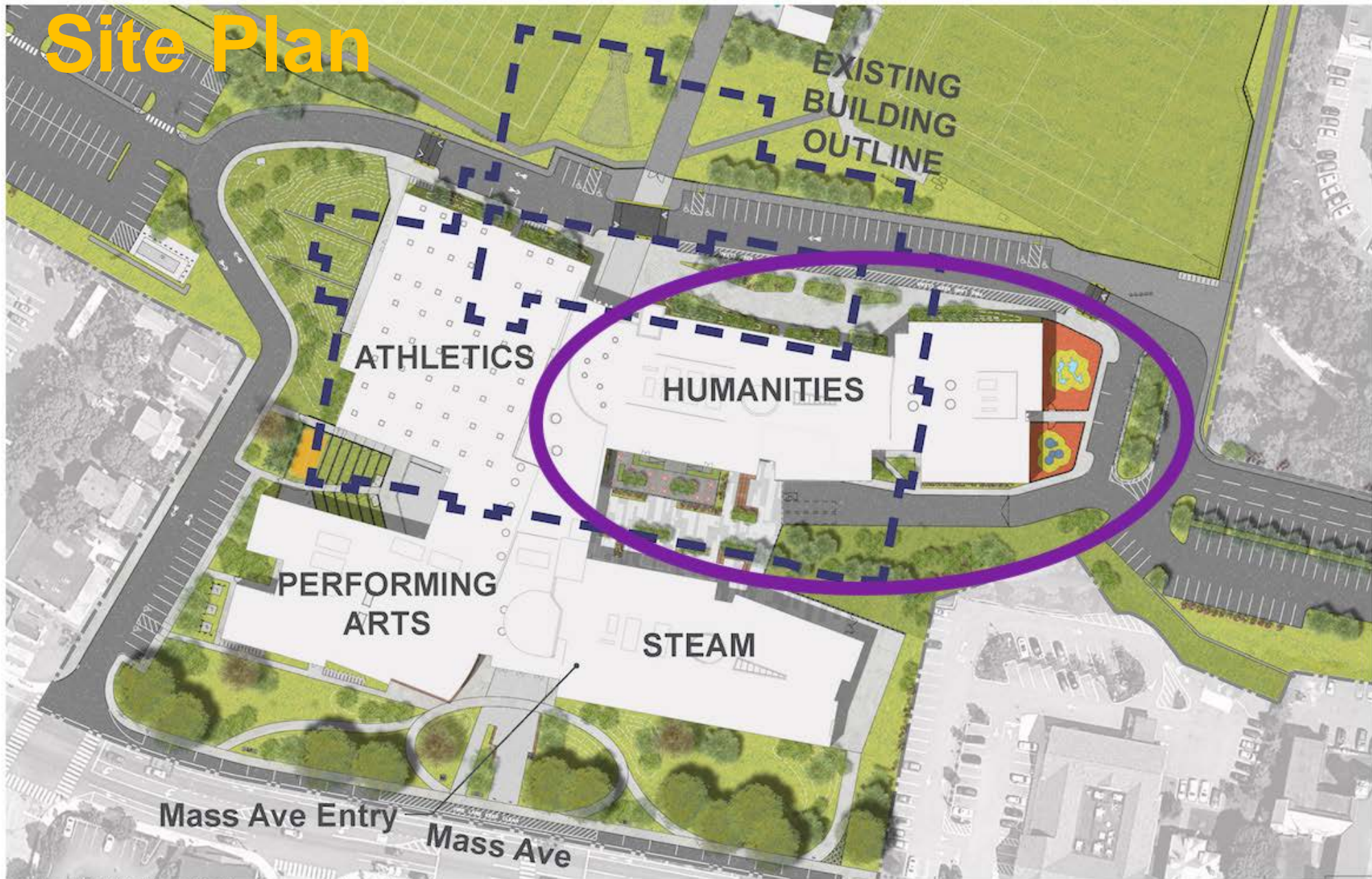




Phase 2: What will be built next

- Central Spine and Forum Stairs
- Library
- Cafeteria
- Courtyard
- Humanities Wing
- District Offices
- Menotomy Preschool

Site Plan





Phase 2 Timeline

Date	Stage
March - April 2022	Demolition of Links, Collomb House and Lowe Auditorium
May - June 2022	Site preparation
July - November 2022	Steel structure
November 2022 - September 2023	Interior construction

Phase 2 Preparation



Mass. Ave. Lobby & Life Skills Cafe



Forum Stairs & Cafeteria



Library



Learning Courtyard



Exterior view of Humanities wing from Peirce Field



Preschool





AHS Building Committee

Jeff Thielman

Dr. Elizabeth Homan

Adam Chapdelaine

Dr. Kirsi Allison-Ampe

Francis Callahan

John Cole

Tobey Jackson

Dr. Matthew Janger



Massachusetts School Building Authority
Funding Affordable, Sustainable, and Efficient Schools in Partnership with Local Communities

SKANSKA

Ryan Katofsky

Brett Lambert

Kate Loosian

Bill McCarthy

Michael Mason

Judson Pierce

Sandy Pooler

Amy Speare

H M

F H

ARCHITECTS

Non-voting members:

Shannon Knuth

Dr. Paul Raia

Kent Werst



CONSIGLI
Est. 1905



Thank you

- Sign up for Project e-Bulletins at www.ahsbuilding.org
- Follow us on [Facebook](#)
- Follow us on [Vimeo](#)
- Sign up for weekly Construction Updates

