



Mass Ave/Appleton Street Safety + Accessibility Corridor Project

Public Open House

June 23, 2022 | 7 pm

MASS AVE/APPLETON STREET SAFETY + ACCESSIBILITY CORRIDOR STUDY

**PUBLIC
OPEN
HOUSE**

WHEN?

**Thursday June 23, 2022
7 pm**

WHERE?

**Arlington Town Hall Auditorium
730 Mass Ave**

***Share your thoughts and ideas
for the intersection of Mass
Ave and Appleton Street***



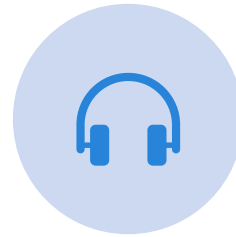
PUBLIC OPEN HOUSE AGENDA



**PROJECT
OVERVIEW**



**EXISTING
CONDITIONS**



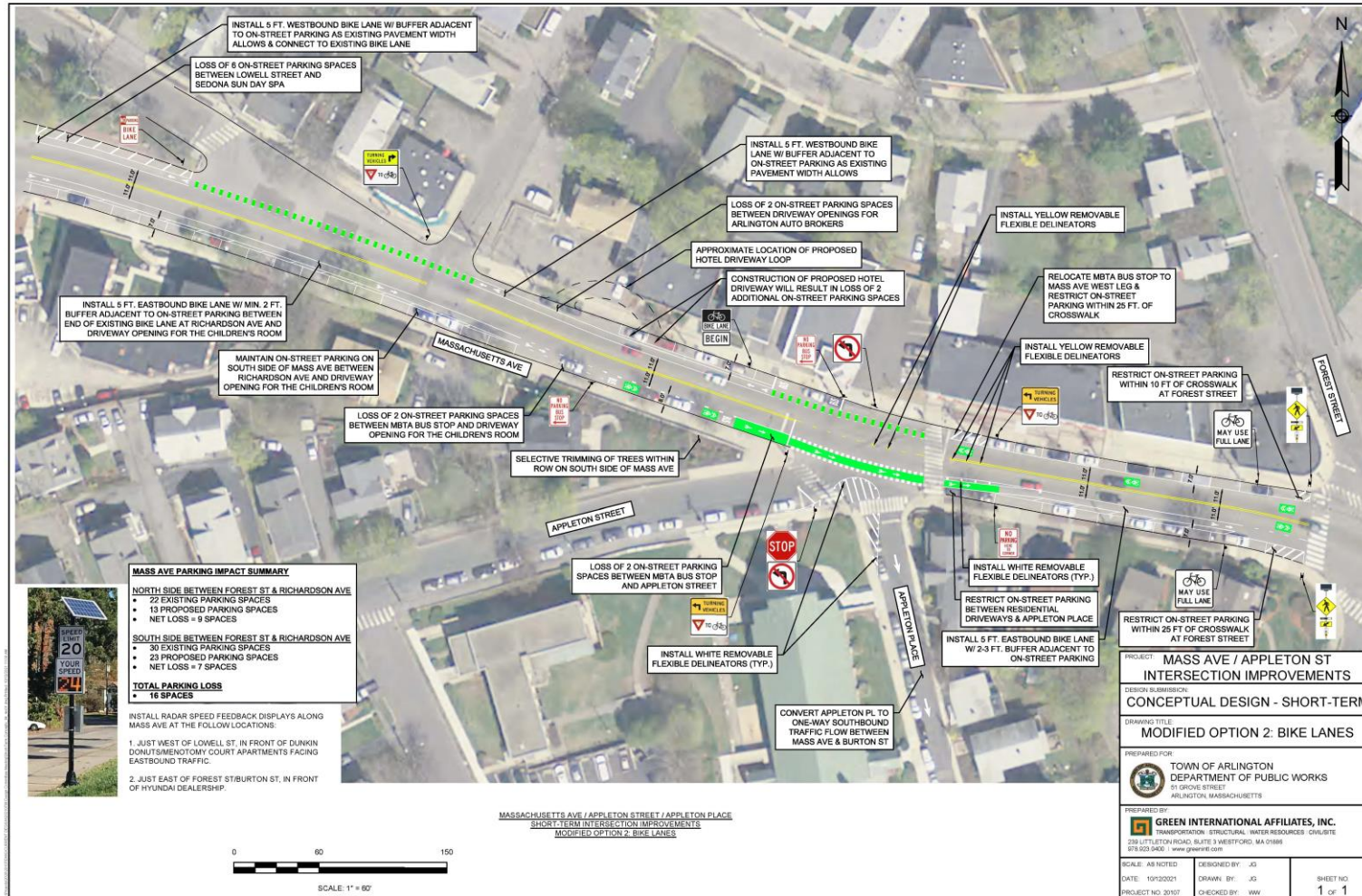
**WHAT WE'VE
HEARD + GOALS**



NEXT STEPS



SHORT TERM IMPROVEMENTS



PROJECT SCOPE



The Mass Ave/Appleton Street Safety + Accessibility Corridor Study will look at the intersection in context of a greater study area



STANTEC CONSULTING

Operating Proposal

MASS AVE / APPLETON STREET SAFETY + ACCESSIBILITY CORRIDOR PROJECT

TOWN OF ARLINGTON // DEPARTMENT OF PLANNING AND COMMUNITY DEVELOPMENT

DECEMBER 23, 2021



Travel Pattern Analysis

Understanding travel patterns through the study area will help the team further develop a baseline condition that will inform the ultimate corridor design. Historically, transportation planners and engineers have leaned on travel models to identify and quantify person movements for different modes of transportation. With the advent of cellular wireless device technology, we are able to purchase and interrogate large sets of data informed by anonymized cellular device data that provide information on device movements by time of day, day of week, and other dimensions.

For an effort this important we suggest revisiting these standards and asking Town stakeholders and the public alike how data can be better harnessed to achieve the desired project purpose of a safe and multimodal corridor.

Stantec has worked with many providers, including Replica, AirCape, and StreetLight, who allow us to analyze trip purpose, travel modes, trip origin, destination, route, and time-of-day patterns. This type of information is a game changer when it comes to understanding travel preferences and patterns.

Stantec proposes using the Replica Places model to gather and present data on how people travel through the project area to better understand the role the study corridors play in people's daily lives.

Replica data can reveal observed travel patterns that complement and broaden what is possible using traditional data sources. Using this data, Stantec will capture the mobility experience in the study area by answering questions such as:

- Where are people coming from and going to when they travel within the study area?
- How many people are using private vehicles to access the project area?
- How many people are walking, bicycling, or taking the bus?
- How do people access the study area when coming to shop, eat, or attend services at the church?
- Is use of Mass Ave within the study area locally-focused (primarily draws travelers from within a few miles) or regionally-focused?

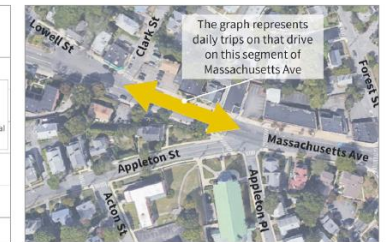
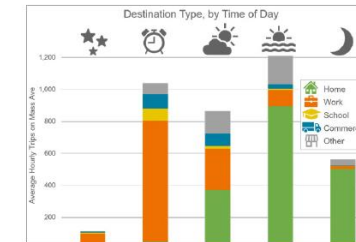


MASS AVE/APPL
Travel Data Collection

In developing and refining project concepts we feel that communicating how people use the Mass Ave corridor, rather than how vehicles experience it, is often the best way to persuade the public to make the necessary trade offs for more inclusive design. Often, where the casual observer may find a street clogged with traffic, actual usage patterns may point to more walking, bicycling, or transit activity. Stantec will coordinate with the Town regarding how to best use existing and collect new multimodal travel data for the project area. We will inventory historical data, including those provided as supplemental materials for this RFP and determine how to interpret this data in the context of travel disruptions caused by the onset of the COVID-19 pandemic in March 2020.

- The types of data we seek to develop a story around include, but are not limited to:
- Roadway geometries, right-of-way, and other key roadway characteristics
 - Turning movement counts by intersection
 - Traffic control device data, including signal plans and conditions
 - Vehicle speeds
 - Crash and incident data
 - Pedestrian facilities, including sidewalks and crosswalks
 - Pedestrian activity
 - Bicycle facilities
 - Bicyclist activity

- Transit services
 - Transit ridership, by route and stop
 - Curbside regulations
 - Municipal parking facilities (on and off-street)
- To conserve project budget, we will only collect new data following discussion with the Town; any new data will inform the resulting design proposal. As a minimum turning movement counts will be required to inform Level of Service analyses for project area intersections, signal plans to conduct warrant reviews and confirm traffic operations, crash data to inform the need for geometric changes.



TOWN OF ARLINGTON 48 STANTEC



PROJECT CORRIDOR



CONSULTANT TEAM



Aleece D'Onofrio



Ralph DeNisco



Erin Cameron



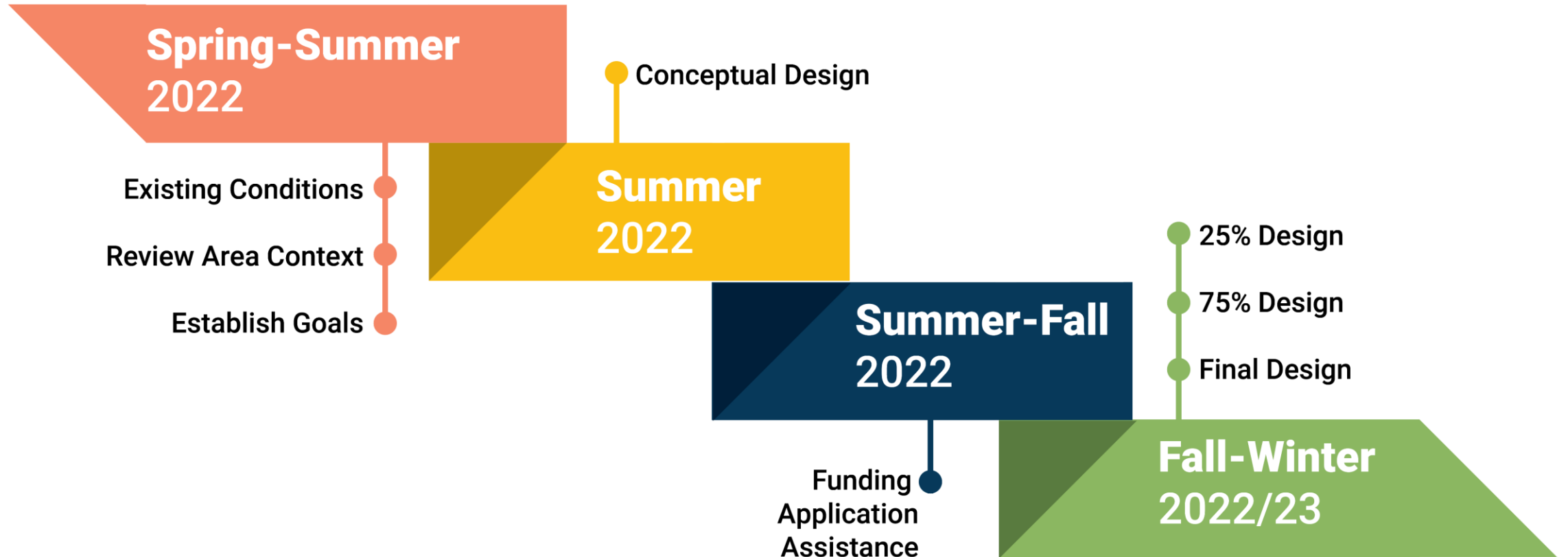
Michael Clark



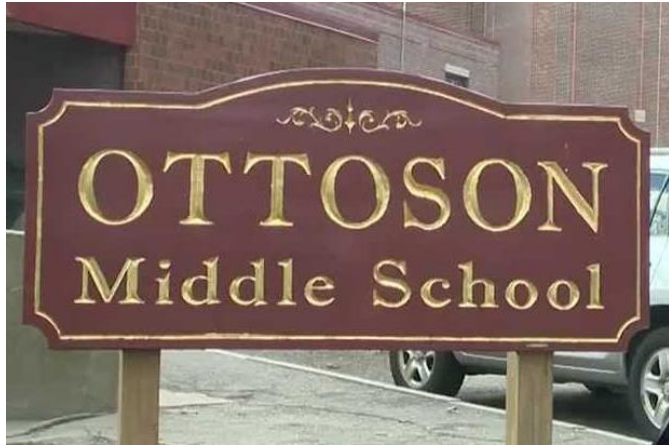
STUDY PROCESS

PLANNING

ENGINEERING



MULTIUSE AREA



MULTIUSE AREA

REPLICA

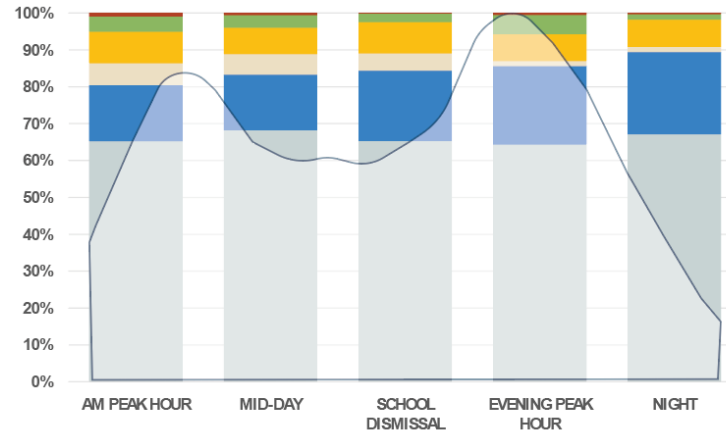
See Your City Better

What We Do

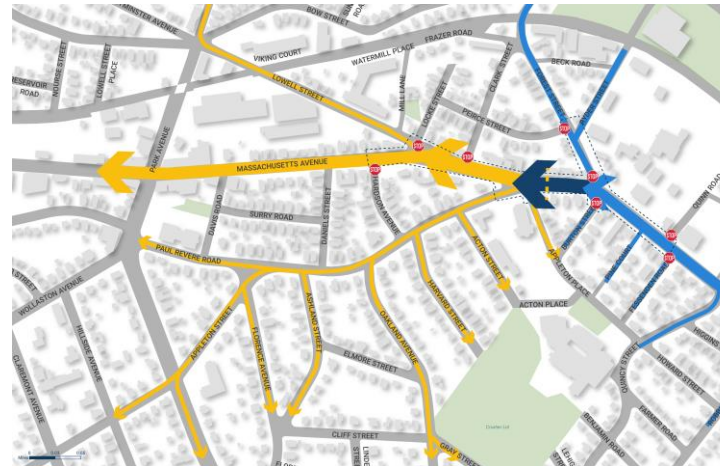
Mobility data is essential to the work of city planning — but cities are more than mobility.

How It Works

To fully understand a city, you need a holistic view of how people, places, and opportunities intersect.



How people travel through the corridor?
Why people travel here?
When are the peak hours of activity?



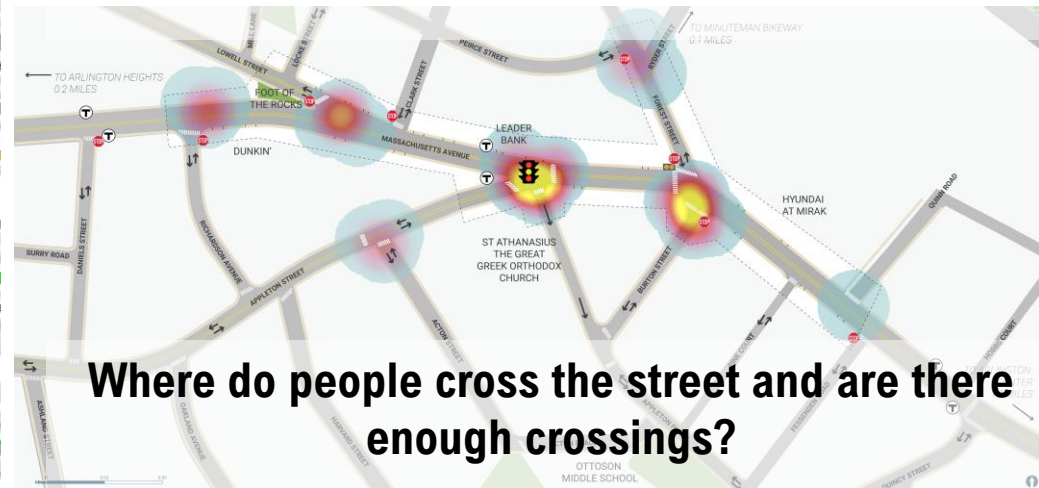
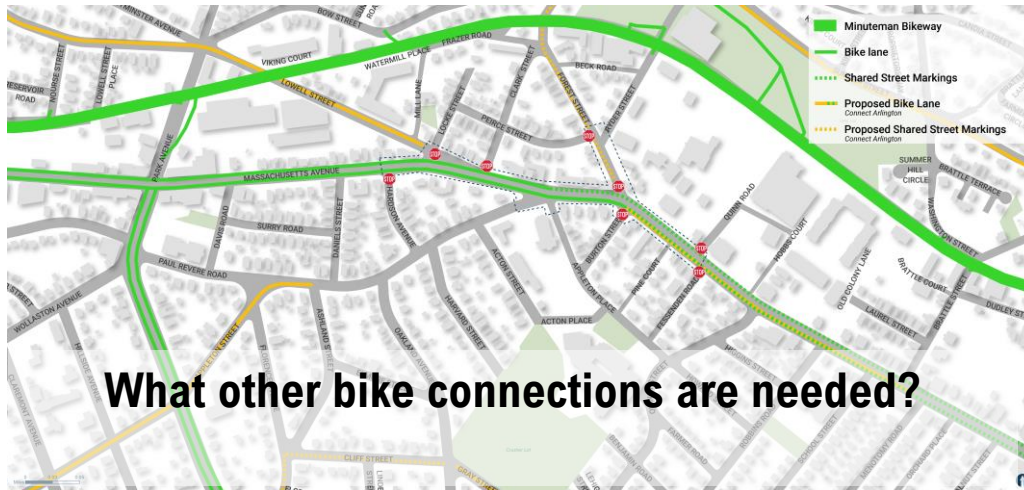
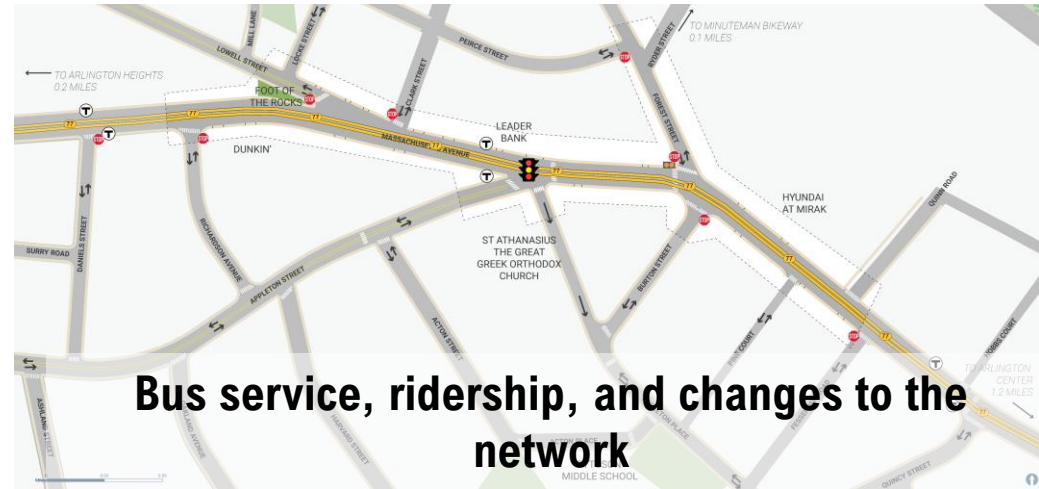
Where are trips coming from and going to?



MULTIMODAL INVENTORY

Looking at Project Area from the perspective of people on:

- Bike
- Transit
- Foot



OPEN HOUSE

CORRIDOR GOALS

Reflect on what you hope this project will accomplish.

What should the Project goals be?

OPPORTUNITIES

A lot of ideas have been talked about along the Project Corridor.

Share your thoughts and vote for design elements the Project Team should carry into concept development.

EXISTING CONDITIONS

Comment on the Project Team's understanding of the Mass Ave/Appleton Street Corridor

PARTICIPANT PROFILE

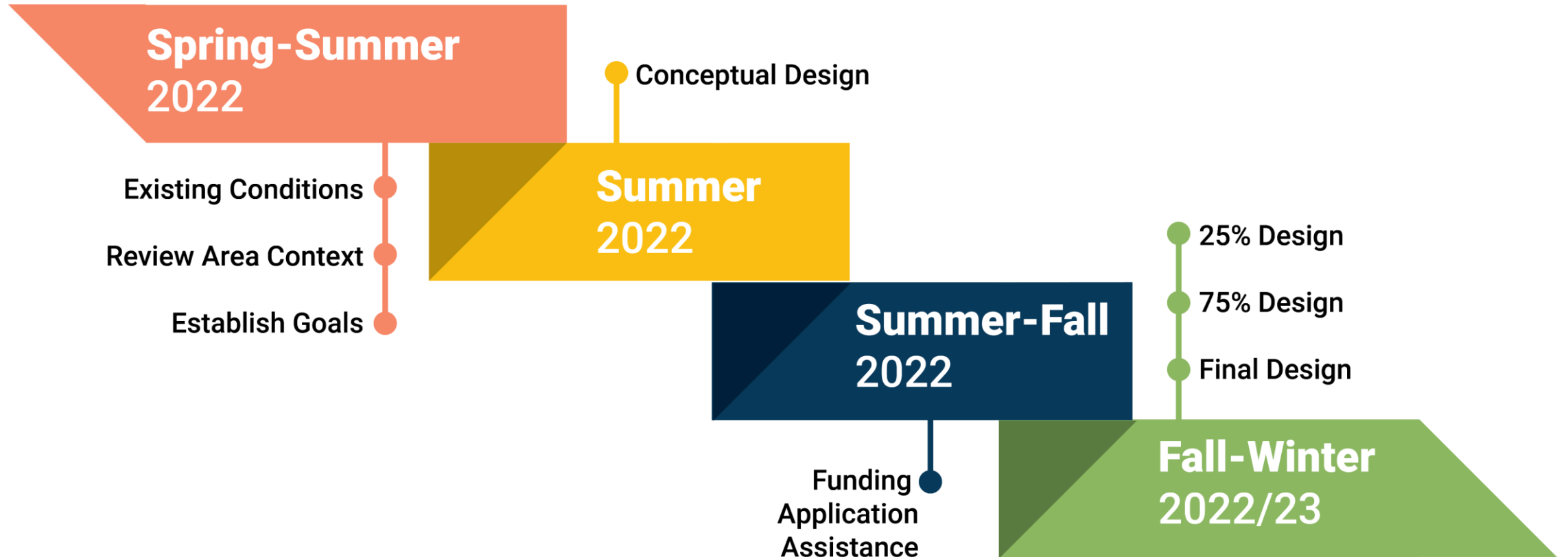
Stop by and show us how you use the Project Corridor.



STUDY PROCESS

PLANNING

ENGINEERING



STUDY PROCESS

PLANNING

ENGINEERING

**Spring-Summer
2022**

Existing Conditions

Review Area Context

Establish Goals

Provide feedback on the materials you see today through the end of July by interacting here and online

All the materials will be available on Mural for you to interact with, leave comments, and read what others have to say about the data, ideas for draft goals, and area concerns.

Access the mural by scanning the QR Code here, or visiting:



<https://app.mural.co/invitation/mural/stantec8401/1654011928000?sender=u22a652c4f22a74e6c1eb6587&key=7a19a104-706b-4e8e-bbbf-4e69b912b437>

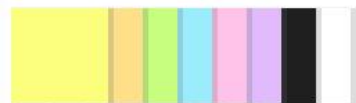


Text

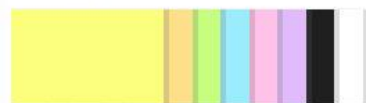
Drag and drop sticky notes, titles or text boxes to write down your ideas.



3x3 sticky note



5x3 sticky note



Circle sticky note



PUBLIC OPEN HOUSE

WELCOME REMARKS - OPEN HOUSE GUIDE

- PROJECT OVERVIEW
- WHAT WE'VE HEARD
- NEXT STEPS

All information will be available in an interactive format online.

CORRIDOR GOALS
Reflect on what you hope this project will accomplish.

EXISTING CONDITIONS
Comment on the Project Team's understanding of the Mass Ave/Appleton Street Corridor, including:
- Corridor activity
- Existing facilities and existing opportunities
- Travel flows on Mass Ave + Appleton St
- Multimodal (bus + bicycle) profile

OPPORTUNITIES
Many ideas have been talked about along the Project Corridor. Share your thoughts and vote for design elements the Project Team should carry into concept development.

PARTICIPANT PROFILE
Before sharing, be sure to allow us to allow us how you use the Project Corridor!

JUNE 23, 2022

PROJECT SCHEDULE

JUNE 23, 2022

PARTICIPANT PROFILE

How do you use the Project Corridor? Place a sticky dot to show where you live, work, go to school, shop or see friends.

JUNE 23, 2022

Corridor Goals

Opportunities

CORRIDOR GOALS FOR COMMENT

PRIORITIZE SAFETY FOR ALL USERS Connect Arlington, Design Review Committee: <ul style="list-style-type: none">Increased visibility and sight linesDedicated spaces by userProtected/move/crossings	SUPPORT VIBRANT, ACTIVE COMMERCIAL CENTERS CONNECT ARLINGTON <ul style="list-style-type: none">Preserve parking, walkable by and loading accessIntegrate new and potential developmentLocal and regional accessibility
IMPROVE SAFE, ACCESSIBLE ROUTES TO SCHOOL Connect Arlington, Complete Streets Policy, Arlington Master Plan <ul style="list-style-type: none">Increase primary routesInclude refuge spacesOccur on peak use times, including drop-off	CREATE LOW-CARBON TRANSPORTATION OPTIONS Connect Arlington <ul style="list-style-type: none">Improve bicycle facilitiesImprove transit operationsEncourage walking

TELL US YOUR THOUGHTS ABOUT THE PROJECT CORRIDOR

PLACE A STICKY DOT WITH THE DESIGN ELEMENTS YOU WANT TO SEE IN THE PROJECT CORRIDOR

TRAFFIC SAFETY Traffic Calming	STREETSCAPE ENHANCEMENTS Street Furniture	TRANSIT ACCOMMODATIONS Bus Priority at Intersections
Improved Traffic Control Traffic Signal Timing	Repurpose Street Space Curb Extensions	Rebuild Bus Stops
Dedicated Space for Curbside Activity	Repurpose Street Space	Bus Stop Improvements

JUNE 23, 2022

Navigation Settings