

*Robbins Farm Park
Playground Renovation*

Public Workshop #1

November 14, 2022

Workshop Agenda

1. Introductions + Process

2. A Walk Around Robbins Farm

The Community

The Park

The Playscape Slope

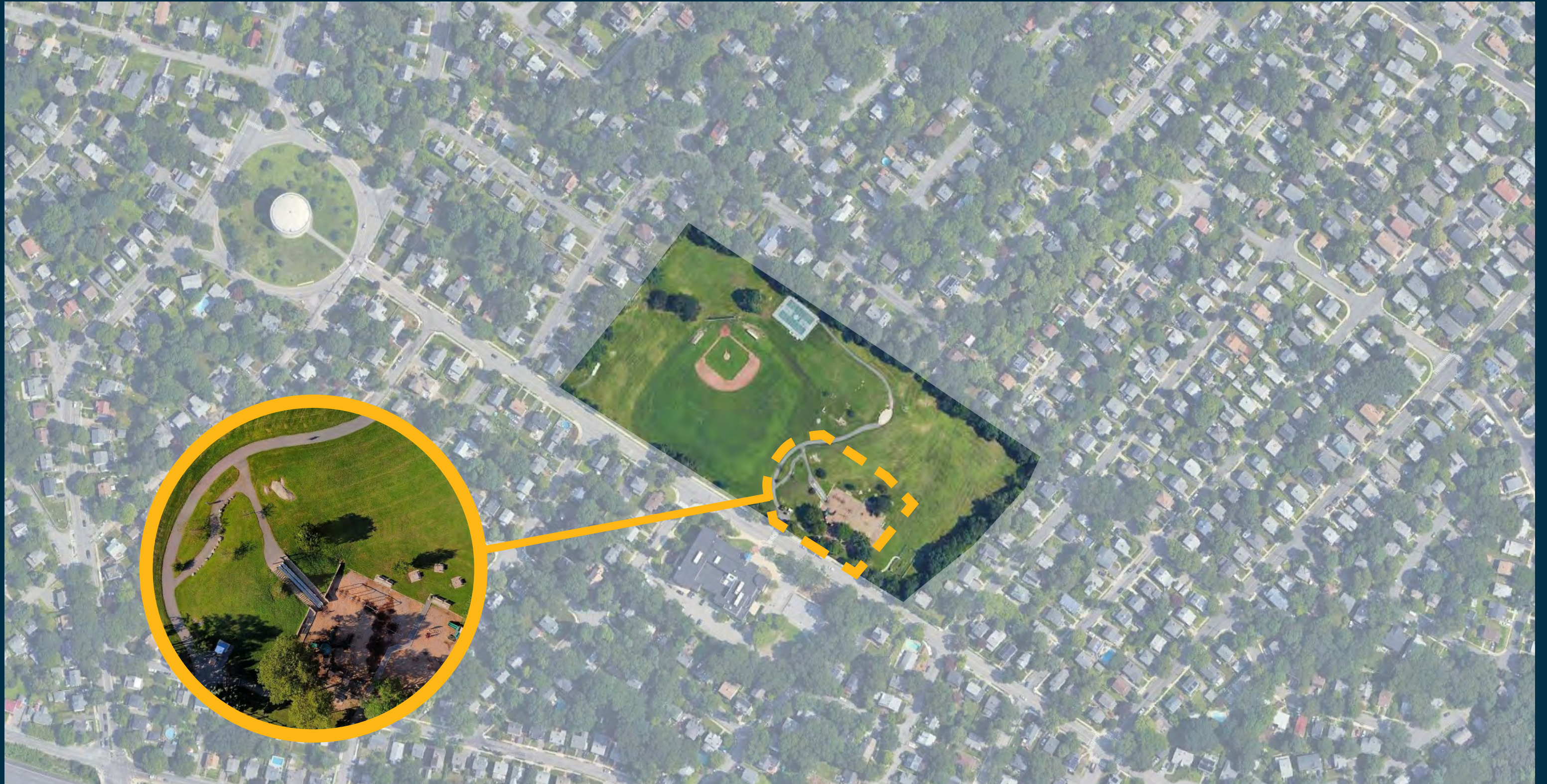
The Playscape Base

3. Q & A

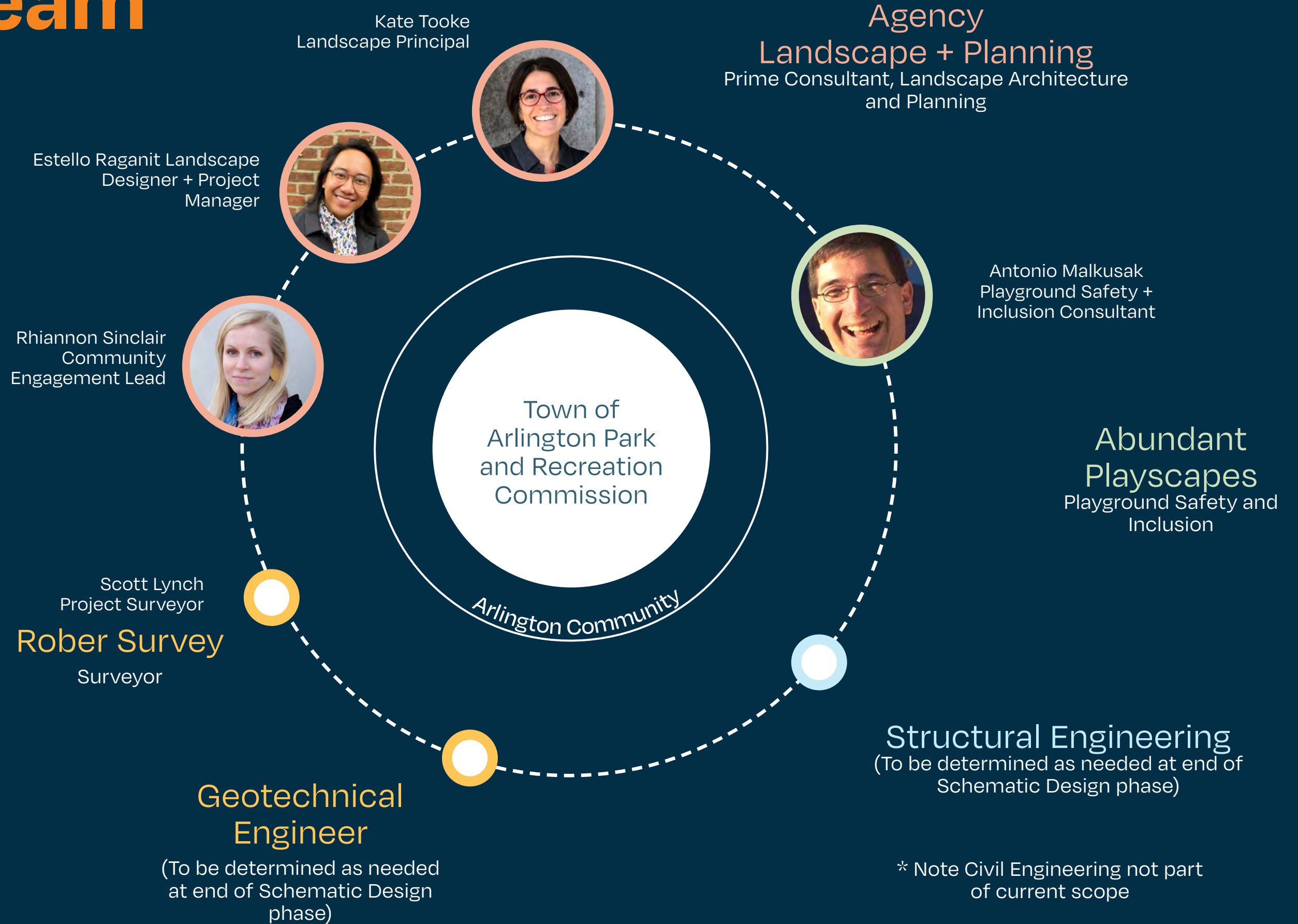
We want to learn from you!

We'll be asking you some questions via zoom polls and chat throughout the presentation!

Our Project Scope - RFP Playground!



Our Team



We Love Playscapes



RALEIGH



LOS ANGELES



OMAHA



LEXINGTON KY



ALABAMA



BOSTON

A welcoming place for people of all ages, backgrounds, and abilities to play together

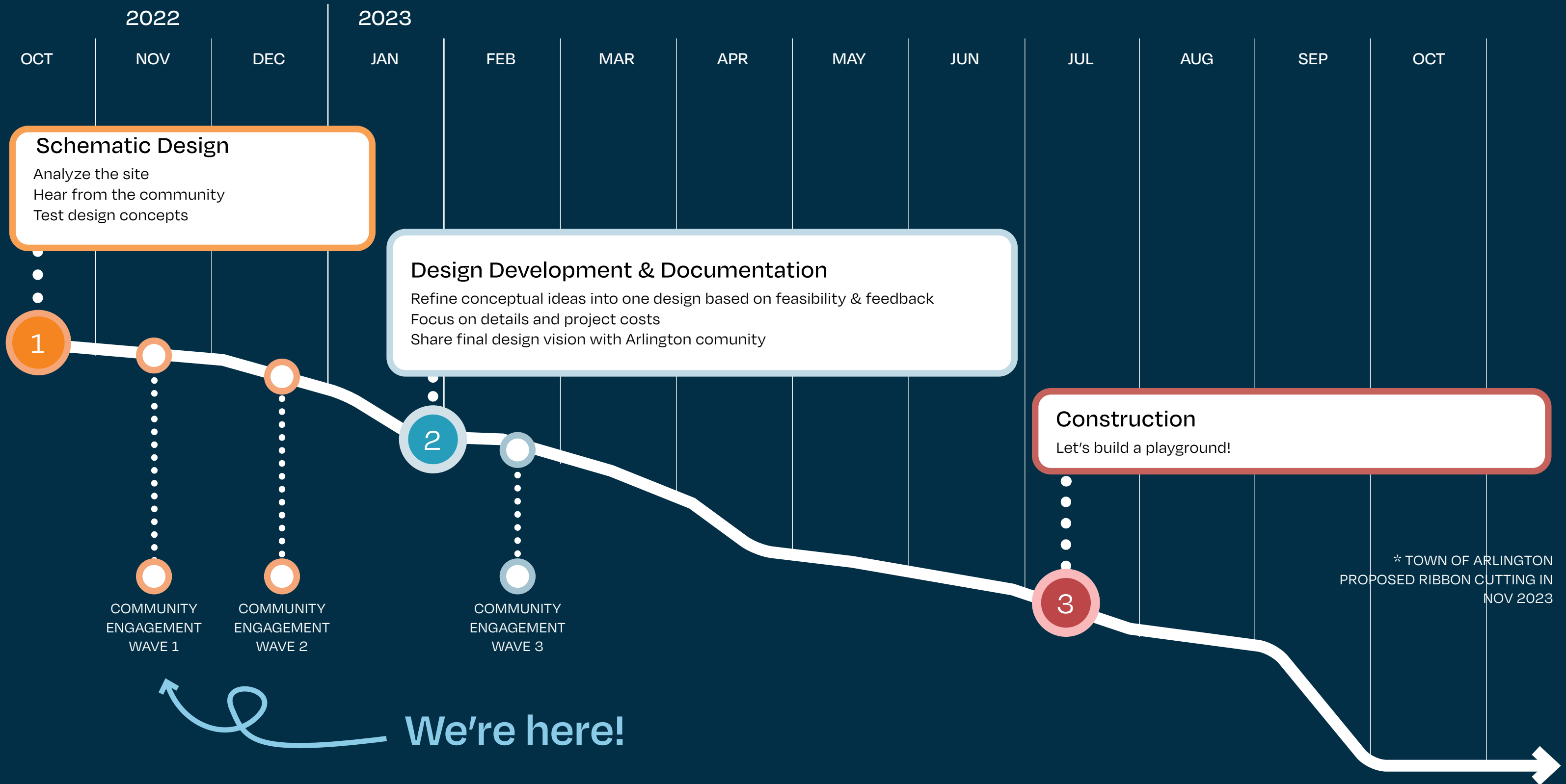
A landscape that invites exploration and movement in a variety of exciting ways

PROJECT GOAL

To create an inclusive adventure playscape nestled into a beloved community park.

Reflective of the unique character, culture, and history of both Arlington and Robbins Farm

Our Schedule + Process



Thanks for stopping by, Arlington!



275+
Responses
to the online
Survey *

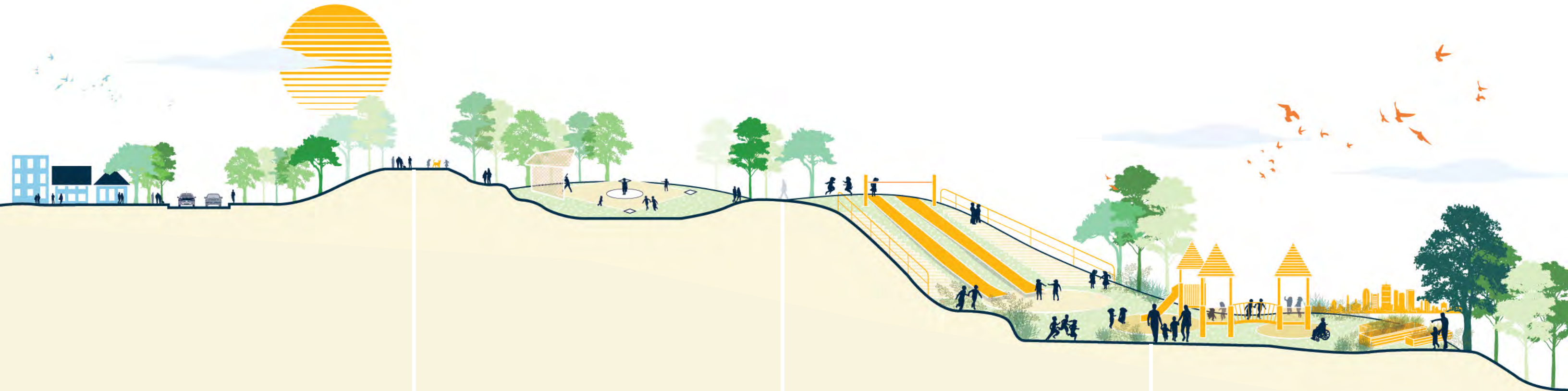
* Still Open!



30+
Conversations at
Pop Up
Event at the Park,
Nov 5th



Analysis Themes



1

Community

2


Park

3

Playscape Slope

4

Playscape Base






Poll

Select your responses from this pop-up window!

-
-
-
-
-
-

Chat

Add comments and your answers to our questions here!

- 
- 
- 

Mute Stop Video Participants 2 Chat Share Screen Record Reactions Leave

Poll Question #1

Tell us about yourself...how close do you live to Robbins Farm Park?

**A. Short walk
(no more than 10 minutes)**

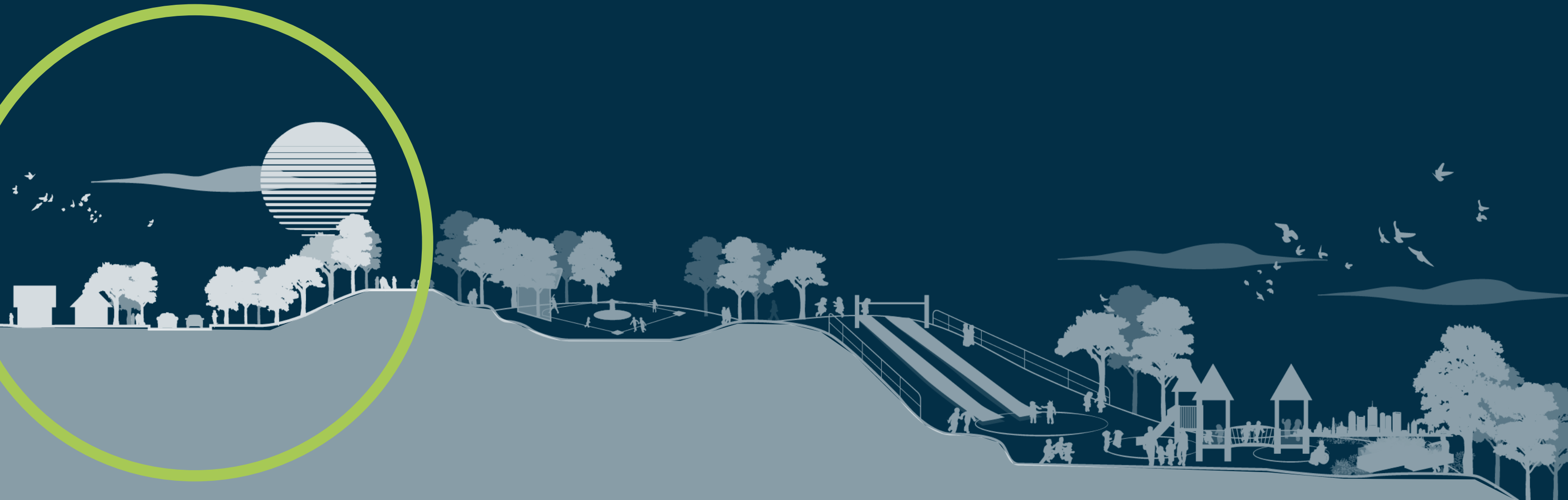
**B. Long walk
(10 to 20 minutes)**

**C. It's a hike, but I live
within Arlington**

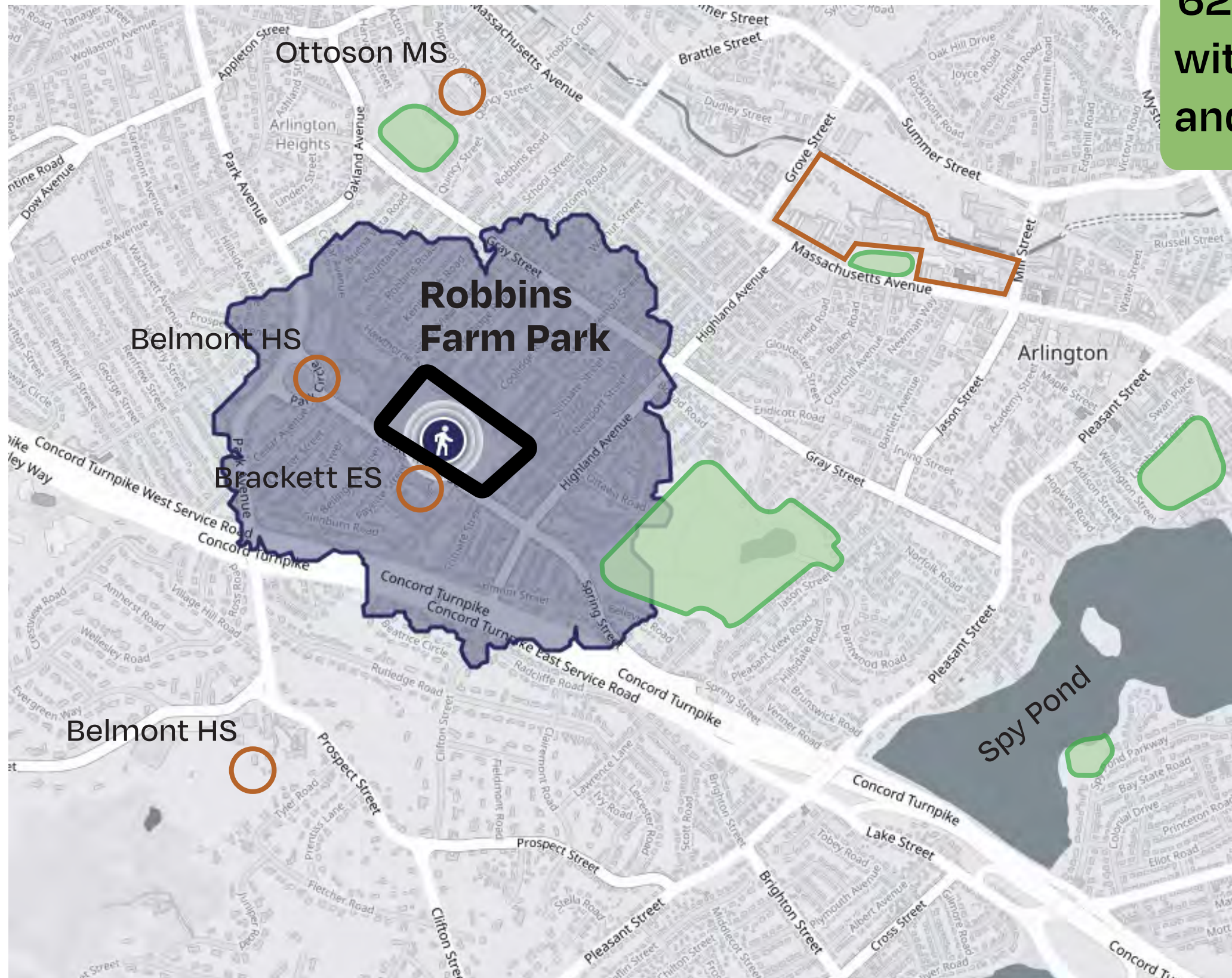
**D. I live outside of
Arlington**



Community



Arlington Community



62% of survey participants live within a 10-min walk of the Park and 92% live in Arlington.

Almost one-quarter of residents who live around the park are under 18 years old.

Over 70% of residents who live within 10 minutes walk of the park are white.

Residents commute an average of 34 minutes to work or school.

A Family of Outdoor Destinations in Arlington



Crusher Lot



Menotomy Rocks Park



Minuteman Commuter Bikeway



Park Circle Water Tower



Arlington Reservoir



Spy Pond

A Variety of People Come to Robbins Farm Park

* data from almost 300 responses to a community survey

27% of people come to the park with toddlers, and another **45%** come with children between the ages of 5 and 12.

Approximately **2/3** of respondents were from zip code 02476. The rest from other parts of Arlington.



Including Diverse Abilities and Perspectives

* data from US Census and US Dept of Education

About **5%**
of youth who live near the park
have a disability.

83% of childhood disabilities
in Massachusetts are
neurological.
(i.e. autism, dyslexia, ADHD, etc)

The remaining **17%**
include children with a range of
physical disabilities.



Poll Question #2

What brings you to Robbins Farm park?

A. Place for a picnic/gathering

E. Sports

B. Playground

F. Views

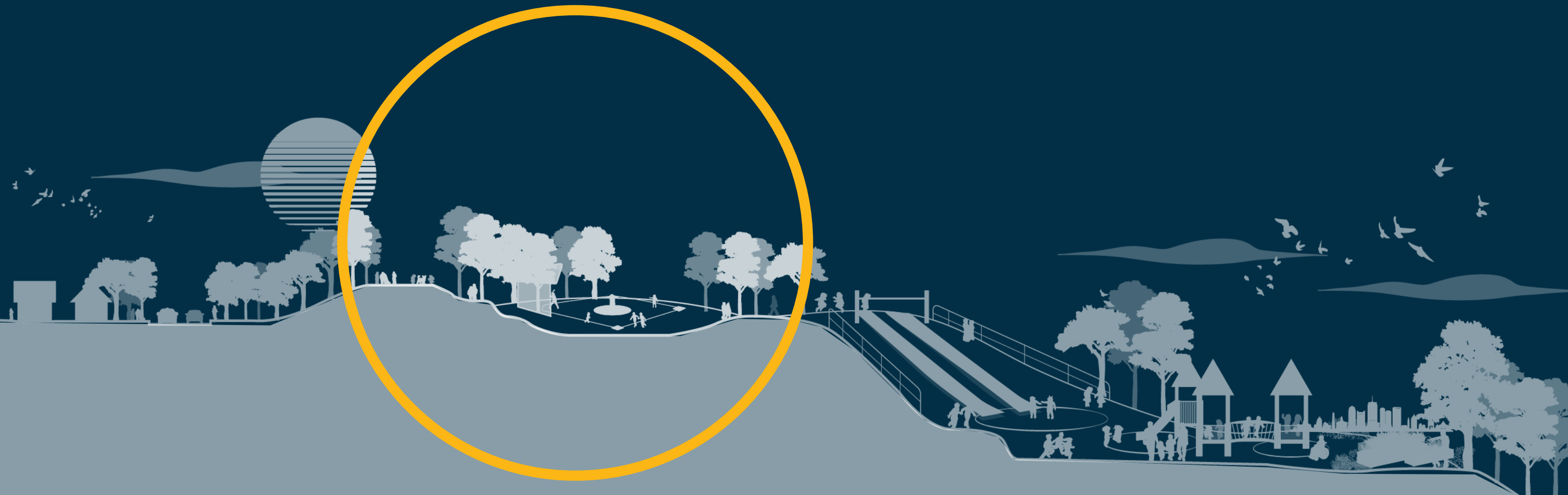
C. Walking the dog

G. Special Events

D. Community Garden

H. Other (please share in chat)

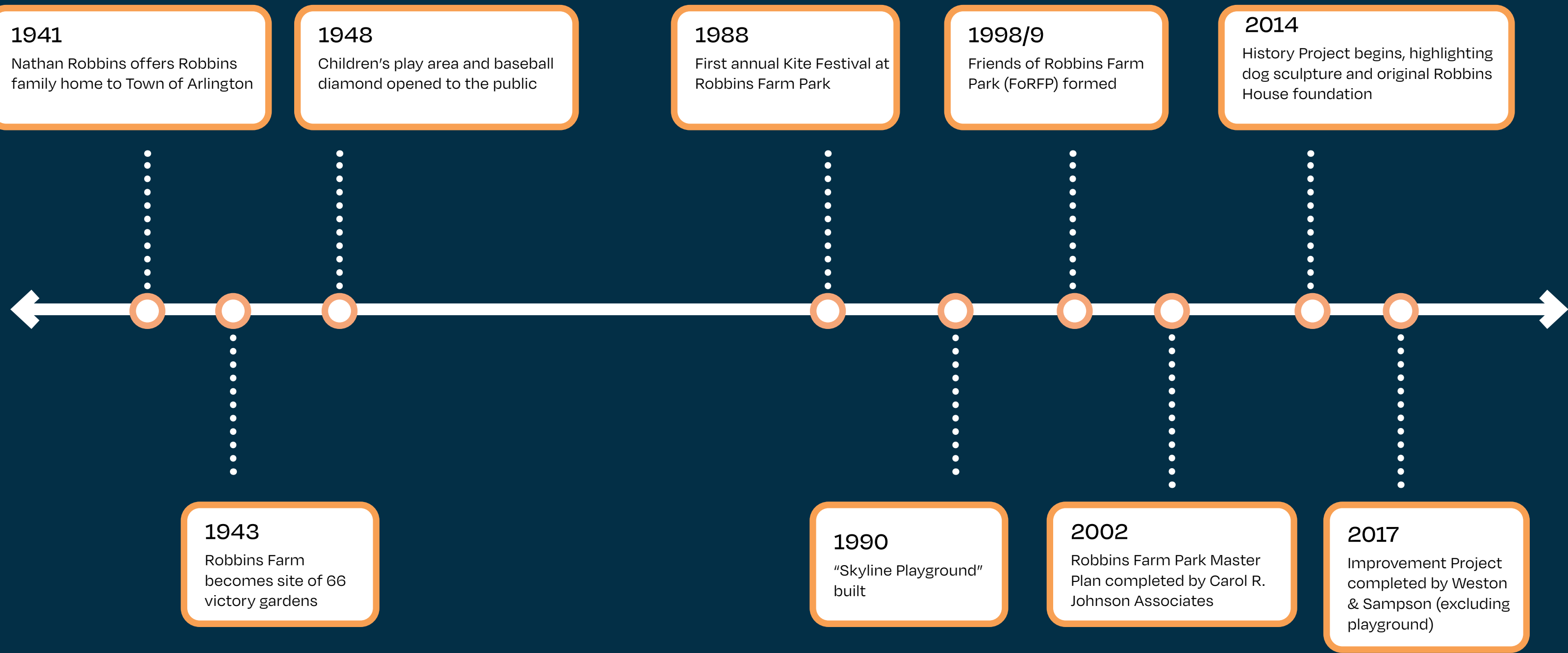
Park



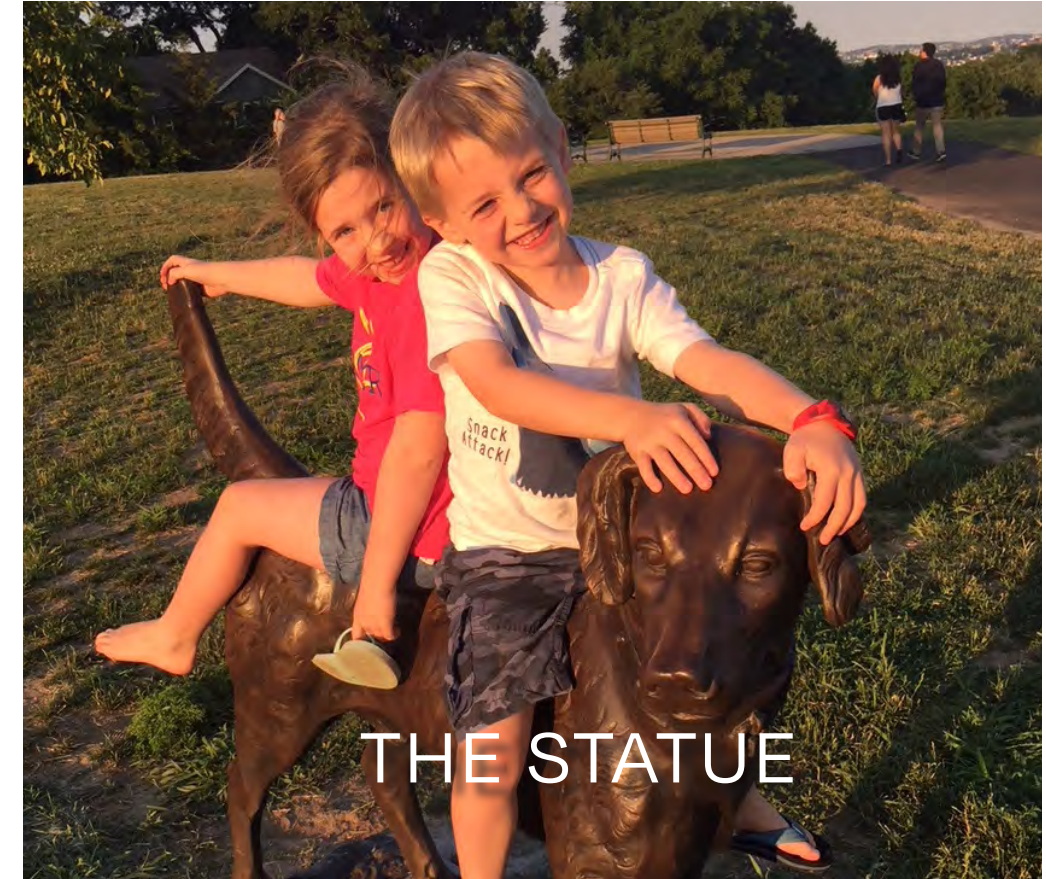
A Site Steeped in Memories



A Brief History of Robbins Farm Park



An Active Park on a Daily Basis

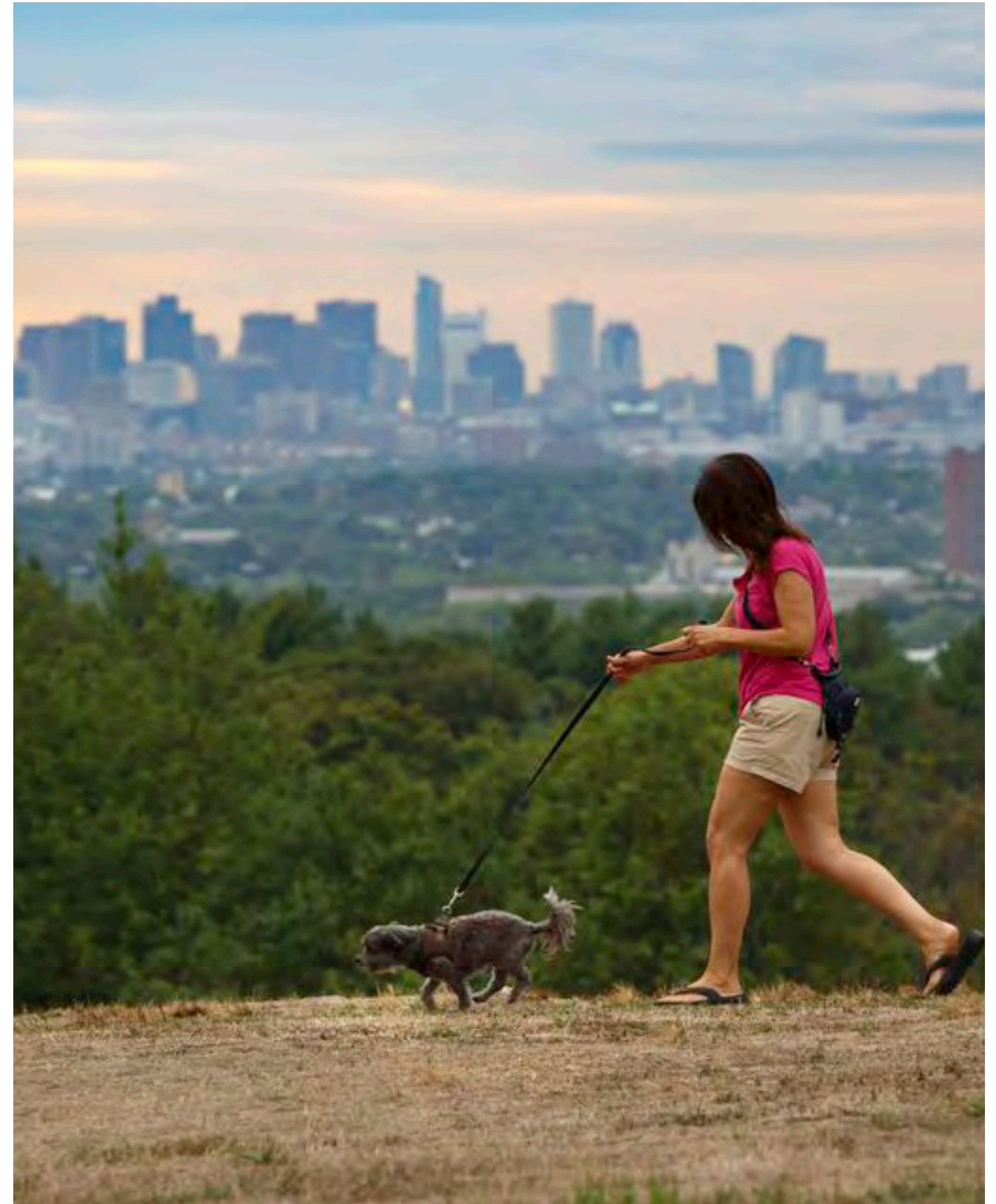


A Gathering Place for Special Events

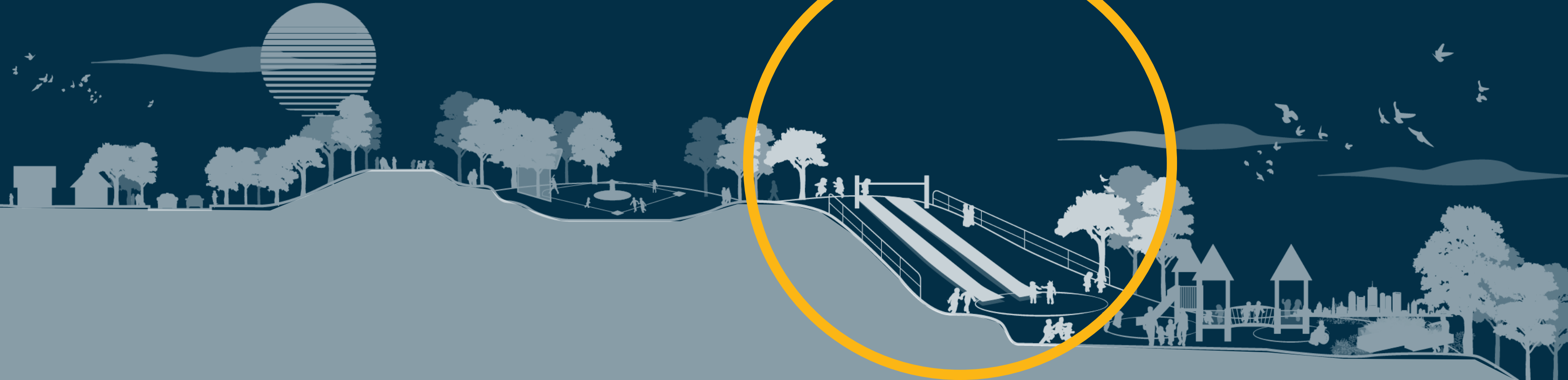


Chat Question

Using the chat, share a memory of Robbins Park.



Playscape Hill



A photograph of a playground featuring a large, dual-lane slide. The slide is light blue with a green safety mat on the surface. A man in a white t-shirt and dark shorts is sliding down the left lane, with his arms raised in excitement. A young child is sliding down the right lane. In the background, a wooden staircase with metal railings leads up to the top of the slide, where a girl and a boy are standing. The scene is set outdoors with trees and a clear sky.

" We LOVE the big slides!" *

The slides came up **283** times in the survey responses!

95% of survey respondents indicated that the slides were important or very important to the character of the playground

"Please restore the slides!" *

A Popular Sliding Destination!

* Direct Quotes from Survey Responses

Observations

Barriers in ADA route to top

Two slides offer identical experiences

Plastic material was brittle and not UV stable

Minimal shade on south-facing slope

Underused grassy slopes

Stairs offer only one standard way up

Retaining wall is not "playable"



Technical Considerations



16

Vertical feet of elevation change

1:5 / 20%

average slope of hill

28

2

mature flowering trees on slope to conserve

~165 ft.

distance to top of hill via sloped pathways

Let's Get Inspired ... a PLAYABLE hillside!

Intuitive, universally accessible pathways to multiple heights

A diversity of challenges and options for sliding (different lengths, steepness, widths, and textures)

A variety of fun ways to climb up (engaging different skills and senses)



Let's Get Inspired ... a PLAYABLE hillside!

Intuitive universally accessible pathways to multiple heights

A diversity of challenges and options for sliding (different lengths, steepness, widths and textures)

A variety of fun ways to climb up (engaging different skills and senses)



BOSTON CITY HALL PLAZA



SMALE RIVERFRONT PARK, CINCINNATI



An Inclusive Hillside Playscape

The low-vision community will benefit from curbs, tactile warning at grade changes, and color-contrast for wayfinding.

Neurodiverse children and adults will want some quiet and reflective moments in the hillside playscape.

Children and caregivers with physical disabilities will need sloped walkways to multiple levels and transfer platforms.



Poll Question #3

What is the most appealing hillside activity?
(Choose your top three!)

A. Climbing / Scrambling

E. Jumping / Hopping

B. Sliding

F. Rolling

C. Viewing / Observing

G. Balancing

D. Running

H. Other, please share in chat.

Playscape Base





A Celebrated Playground at Opening

Observations

Trees and equipment have been removed over the years

Picnic area is popular, especially for parties

Thin cover of EWF surfacing

Some perimeter seating

Mature tree canopy provides shade

Ample free space

Main structure and swings remain popular



Scale Comparison Diagram

Robbins Farm Playground

Arlington, MA

- Size (sf): 13,000



Danehy Park Cambridge Universal Playground

Cambridge, MA

- Size (sf): 30,000
- Cost: \$6 million (including parking and soils), \$1 million for playground
- Cost/sf: \$200



0.68 acres



Arlington Reservoir "Res" Playground

Arlington, MA

- Size (sf): 8,700
- Cost: \$4.7 million (including Phase I and II for reservoir), \$225k for playground
- Cost/sf: \$25



0.20 acres



Martin's Park

Boston, MA

- Size (sf): 43,560
- Cost: \$7 million
- Cost/sf: \$160



1.0 acre



Alexander W. Kemp Playground

Cambridge, MA

- Size (sf): 13,000
- Cost: \$4 million (including Cambridge Common), \$560k for playground
- Cost/sf: \$43



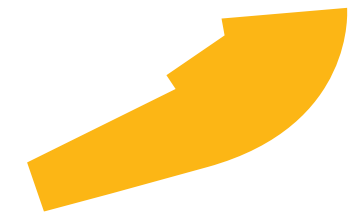
0.30 acres



City Hall Plaza Playscape

Boston, MA

- Size (sf): 12,000
- Cost: \$90 million (including Phase I), \$1.5 million for Playscape
- Cost/sf: \$120



0.28 acres

Let's Get Inspired ... a uniquely Robbins playscape!

What if the play equipment at Robbins Farm Park were a giant climbable dog? Or a series of giant interactive farm vegetables? Or a new take on a corn maze?



THE BAY,
SARASOTA



BELLE'S
GARDEN, TOM
HANAFAN PARK

An Inclusive Playscape

Seniors need need a variety of age-friendly seating options in the shade, with good sightlines to playing kids.

Neurodiverse children and adults need some quiet places to observe and recover.

Children and caregivers with physical disabilities need access to multiple levels of climbing experiences.



Poll Question #4

What is the highest priorities for you as a caregiver? (Choose 2)

A. Comfortable seating

D. Space to be social with other adults

B. Clear lines of sight to play

E. Accommodating multiple ages / abilities in one group

C. Playing together with kids

F. Other. Please share in chat

Q&A



*Robbins Farm Park
Playground Renovation*

Public Workshop #1
November 14, 2022

Chat
Add comments and
your answers to our
questions here!

We're recording!

Audio Settings ^

Chat Raise Hand Q&A Leave

Raise Hand
Click here if you would like
to ask your question aloud

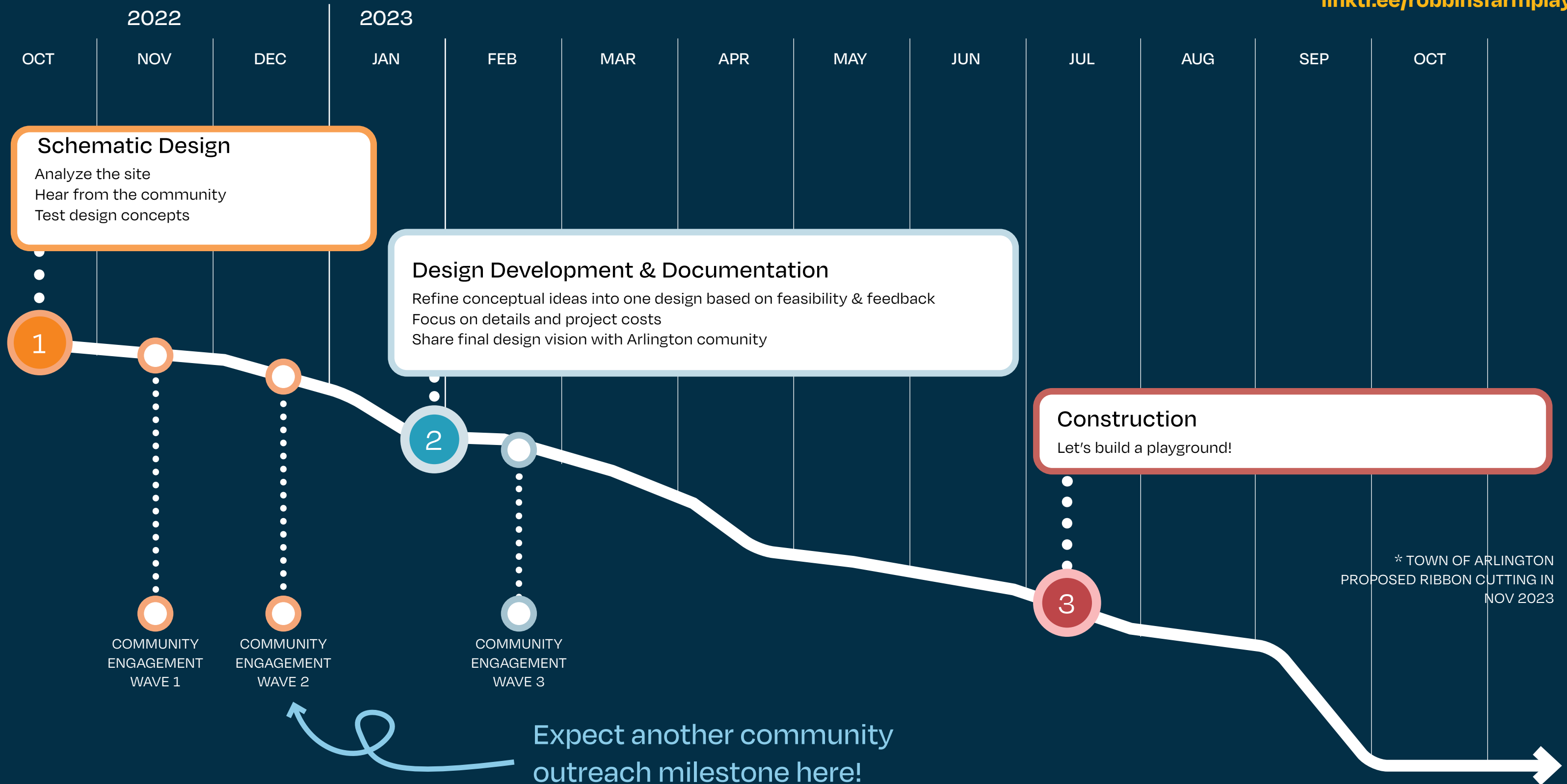


Next Steps

A Recap of our Schedule



Scan to stay informed!
linktr.ee/robbinsfarmplay





Thank you!