



# Arlington High School Building Project

AHS Construction Update – 12/08/2022

## Arlington HS Construction Schedule: April 2020 – September 2025

### Construction Details

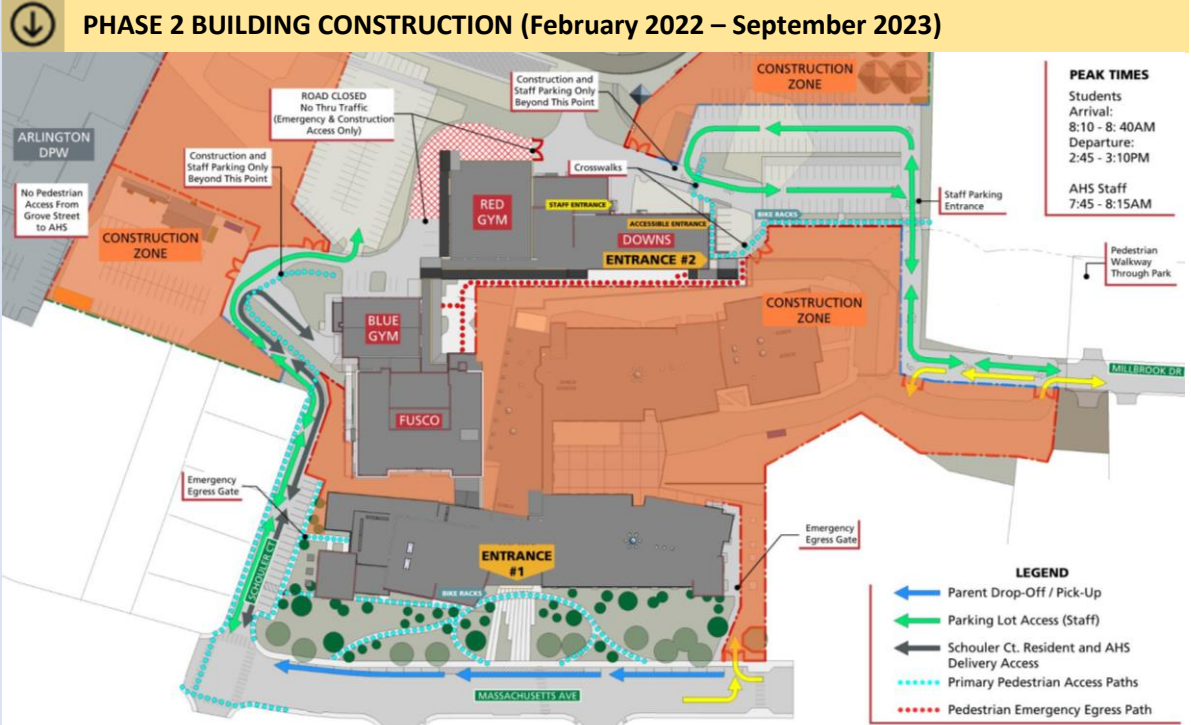
Phase 1 construction is complete and the new Performing Arts and Science, Technology, Engineering, Arts & Mathematics wings are open. Phase 2 began immediately after the Phase 1 building turnover. Part of the old school has been demolished and that area is closed off from the existing school during the next phase of construction.

### COVID-19 Update

The health and safety of the community and workers on-site are of the highest priority and were taken into consideration in all project-related decisions. The Town of Arlington continues to monitor all state and federal guidelines regarding best practices during this unusual time and will modify recommendations as necessary to maintain safety and health for our community and construction workers.

Sign up for Weekly Construction Updates  
<https://ahsbuilding.org/news/construction-updates/>  
For more information, visit:  
[www.ahsbuilding.org](http://www.ahsbuilding.org)  
Email questions or concerns to:  
[ahsbuilding@arlington.k12.ma.us](mailto:ahsbuilding@arlington.k12.ma.us)

For immediate, on-site assistance contact Hal Raymond, Skanska Site Representative, (617) 352-8593



### Construction Look Ahead – Week of December 12<sup>th</sup>, 2022

The above diagram covers all work to be performed during the current phase. Specific work to be performed this week includes:

#### Public Way Impacts:

- Deliveries/demo debris trucking ongoing

#### General Site Activities:

- Phase 2:
  - Steel erection and metal decking installation
  - Steel and concrete deliveries
  - Steel fireproofing
  - Concrete placement
  - Installation of stairwells
  - Layout for overhead M/E/P and corridor framing
  - Installation of roofing system
  - Install temporary tarp around building for winter conditions
  - Dust mitigation ongoing
- West Parking Lot (adjacent to DPW):
  - Construction trailers and contractor parking
- Material Stockpile/Temp Construction Lot:
  - Contractor storage and parking
- Schouler Court:
  - Construction vehicles entering and exiting project site

#### Weekend Work/Holiday Work/Night Work:

- Saturday work is required for the foreseeable future



# ARLINGTON HIGH SCHOOL

## WEEKLY UPDATE – WEEK OF DECEMBER 12<sup>TH</sup>, 2022

### Progress Photographs



*Photograph 1: Phase 2 East Elevation (View from Mill Brook Drive) Taken Week of 12/7/2022*



*Photograph 2: Stair 1 Progress*

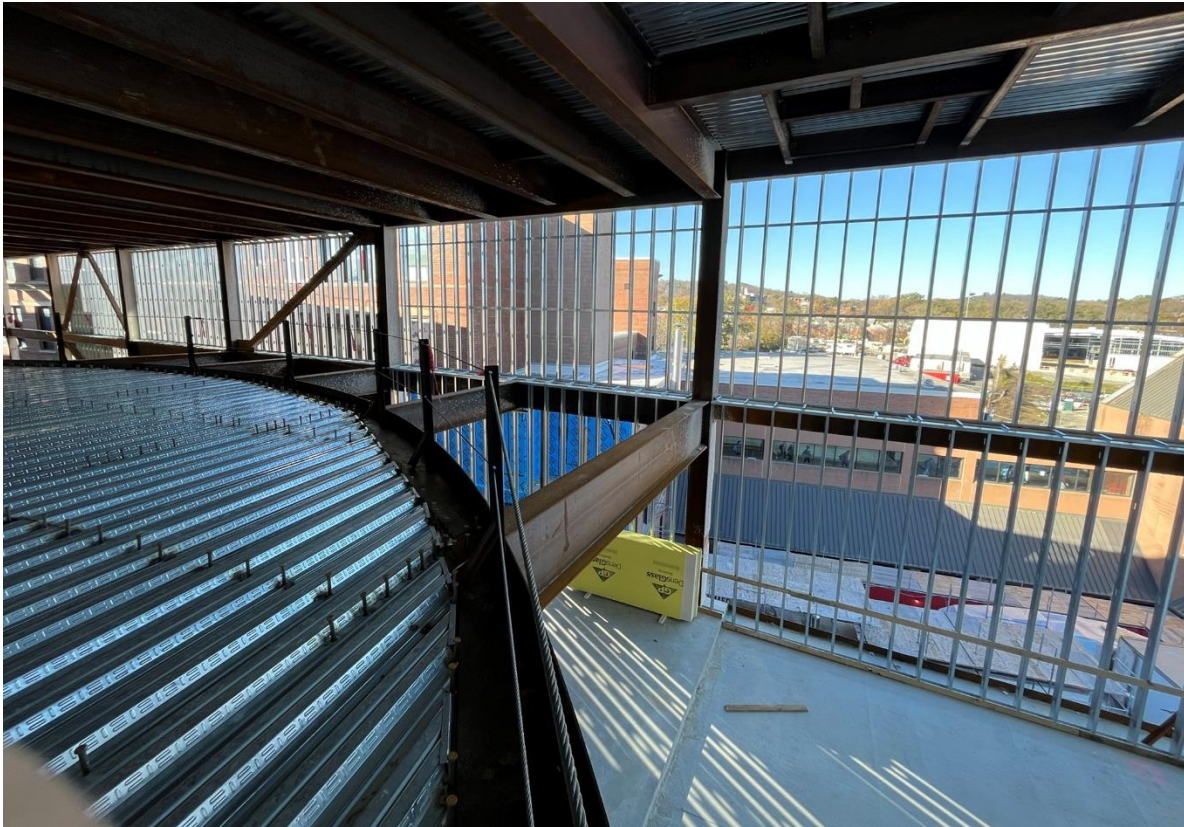


Photo 3: Steel for future Learning Lab looking down concrete slab of Media Center



Photo 4: Topping off steel signed by the Senior Class