

LEGEND

L.O.W. LIMIT OF WORK LINE

SHRUBS/PERENNIALS EVERGREEN SHRUBS

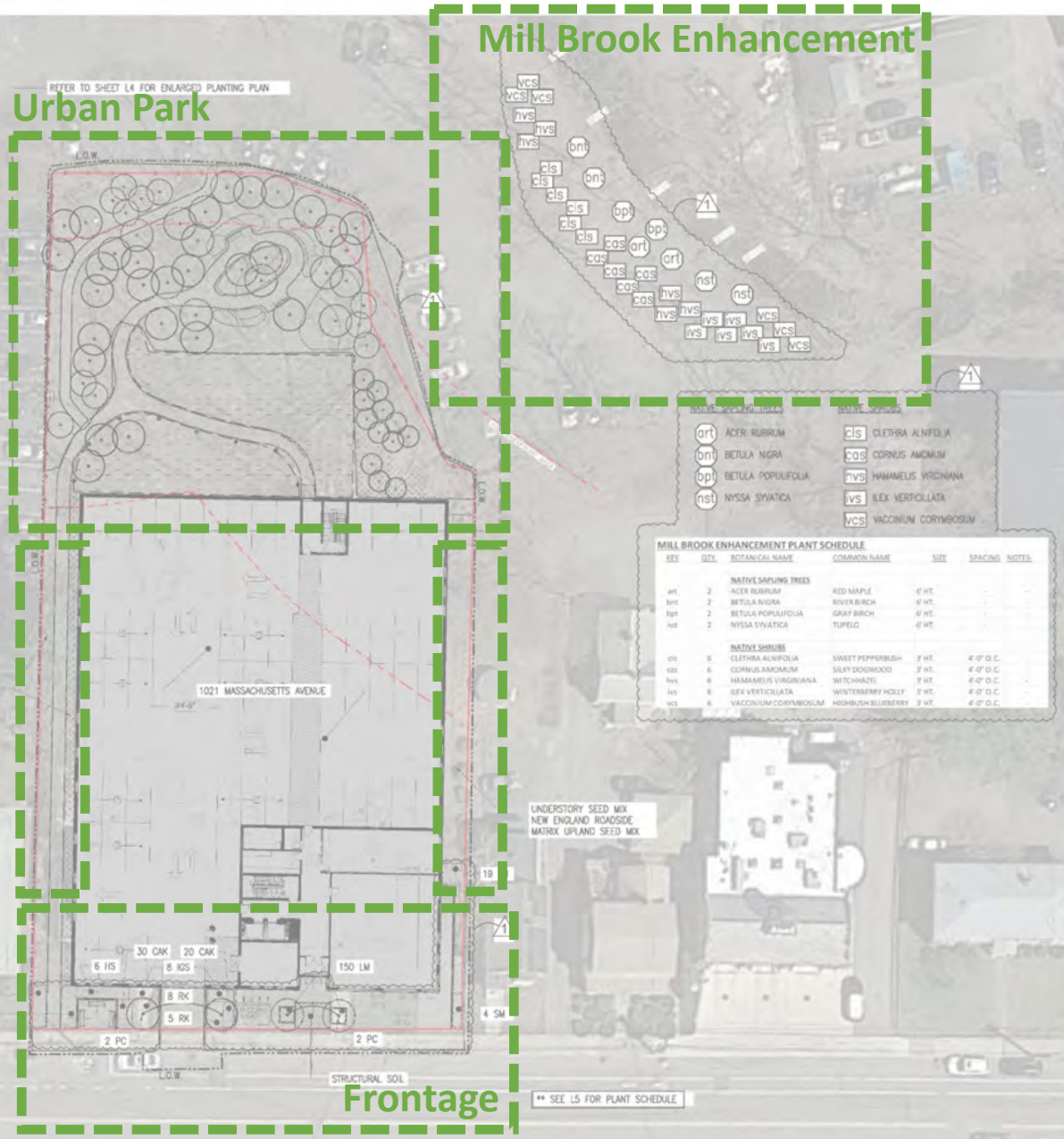
MEADOW SEED MIX
NEW ENGLAND SHOWY WILDFLOWER MIX

UNDERSTORY SEED MIX
NEW ENGLAND ROADSIDE MATRIX UPLAND SEED MIX

NOTE: TOPSOIL FOR LANDSCAPE SHALL BE LOAMY SANDY WITH 5-8% ORGANIC CONTENT AND Ph 6.0-7.3

DECIDUOUS TREE, TYP.
EVERGREEN TREE, TYP.

- PLANTING NOTES:**
- IF DISCREPANCIES EXIST BETWEEN THE NUMBER OF PLANTS DRAWN ON THE PLANTING PLAN AND THE NUMBER OF PLANTS IN THE PLANT SCHEDULE, THE PLANTING PLAN SHALL GOVERN.
 - ALL NEW PLANT MATERIAL SHALL CONFORM TO THE MINIMUM GUIDELINES ESTABLISHED FOR NURSERY STOCK PUBLISHED BY THE AMERICAN ASSOCIATION OF NURSERMEN, INC. IN ADDITION, ALL NEW PLANT MATERIAL FOR THE PROJECT SHALL BE OF SPECIMEN QUALITY.
 - ALL NEW PLANTS TO BE BALLED AND BURLAPPED OR CONTAINER-GROWN, UNLESS OTHERWISE NOTED ON THE PLANT SCHEDULE.
 - THE CONTRACTOR SHALL SUPPLY ALL NEW PLANT MATERIAL IN QUANTITIES SUFFICIENT TO COMPLETE THE PLANTING SHOWN ON THE DRAWINGS.
 - ANY PROPOSED SUBSTITUTIONS OF PLANT SPECIES SHALL BE MADE WITH PLANTS OF EQUIVALENT OVERALL FORM, HEIGHT, BRANCHING HABIT, FLOWER LEAF, COLOR, FRUIT AND CULTURE, AND SHALL BE MADE FROM PLANTS ON THE QUOTED PLANTING LIST. ALL SUBSTITUTIONS SHALL REQUIRE WRITTEN APPROVAL OF THE LANDSCAPE ARCHITECT.
 - ALL NEW PLANTS SHALL BE TAGGED AND APPROVED BY THE LANDSCAPE ARCHITECT AT THE NURSERY PRIOR TO DIGGING OR DELIVERY TO THE SITE.
 - CONTRACTOR SHALL LOCATE AND VERIFY ALL EXISTING UTILITY LINES PRIOR TO PLANTING AND SHALL REPORT ANY CONFLICTS TO THE LANDSCAPE ARCHITECT.
 - STATE LOCATION OF ALL PROPOSED PLANTING FOR APPROVAL BY LANDSCAPE ARCHITECT PRIOR TO THE COMMENCEMENT OF PLANTING.
 - TREES SHALL BE SET 3' HIGHER THAN PREVIOUS GRADE, NO TREES SHALL BE PLANTED BEFORE ACCEPTANCE OF ROUGH GRADING.
 - ALL EXISTING TREES TO REMAIN SHALL BE PROPERLY PROTECTED DURING CONSTRUCTION. PROTECTION TECHNIQUES SHALL BE REVIEWED AND APPROVED BY THE LANDSCAPE ARCHITECT. THE PLACEMENT OF PROTECTION DEVICES ADDITIONAL TO THOSE NOTED SHALL, HOWEVER, BE AT THE CONTRACTOR'S DISCRETION.
 - CONTRACTOR SHALL PROVIDE FULL DEPTHS OF LOAM AS NOTED ON DETAILS AND AS SPECIFIED, FOR ALL PLANTING.
 - CONTRACTOR SHALL COORDINATE LOCATION OF ALL UTILITIES (LINES, DUCTS, CONDUITS, SLEEVES, FOOTINGS, ETC.) WITH LOCATIONS OF PROPOSED LANDSCAPE ELEMENTS (WALLS, FENCES, FOOTINGS, TRAIL, ROOTBALLS, PROPOSED LIGHTING FOOTINGS, ETC.). CONTRACTOR SHALL REPORT ANY DISCREPANCIES TO LANDSCAPE ARCHITECT PRIOR TO CONTINUING WORK.
 - IN AREAS WHERE EXISTING PAVEMENTS ARE REMOVED AND ARE PROPOSED AS TURF, THE CONTRACTOR SHALL REMOVE THE PAVEMENT AND BASE, PROVIDE FILL AND 6" TOPSOIL PRIOR TO SEEDING.



Mill Brook Enhancement

Urban Park

NATIVE TREES

art ACER RUBRUM
bnt BETULA NIGRA
bpt BETULA POPULIFOLIA
nst NYSSA SYRATICA

NATIVE SHRUBS

21s CLETHRA ALNIFOLIA
cos CORNUS AMOMUM
nvs HAMAMELIS VIRGINIANA
ivs ILEX VERTICILLATA
vcs VACCINIUM CORYMBOSUM

MILL BROOK ENHANCEMENT PLANT SCHEDULE

KEY	QTY	BOTANICAL NAME	COMMON NAME	SIZE	SPACING	NOTES
NATIVE SHARPING TREES						
art	2	ACER RUBRUM	RED MAPLE	6" HT.		
bnt	2	BETULA NIGRA	RIVER BIRCH	6" HT.		
bpt	2	BETULA POPULIFOLIA	GRAY BIRCH	6" HT.		
nst	2	NYSSA SYRATICA	TUPERO	6" HT.		
NATIVE SHRUBS						
01s	6	CLETHRA ALNIFOLIA	SWEET PEPPERBUSH	3" HT.	4' 0" O.C.	
02s	6	CORNUS AMOMUM	SLEAY DOGWOOD	3" HT.	4' 0" O.C.	
03s	6	HAMAMELIS VIRGINIANA	WITCHHAZEL	3" HT.	4' 0" O.C.	
04s	6	ILEX VERTICILLATA	WINTERBERRY HOLLY	3" HT.	4' 0" O.C.	
05s	6	VACCINIUM CORYMBOSUM	HIGHBUSH BLUEBERRY	3" HT.	4' 0" O.C.	

Massachusetts Avenue

Frontage

1021-1025
MASSACHUSETTS
AVENUE
ARLINGTON, MASSACHUSETTS
MAJ INVESTMENT, LLC

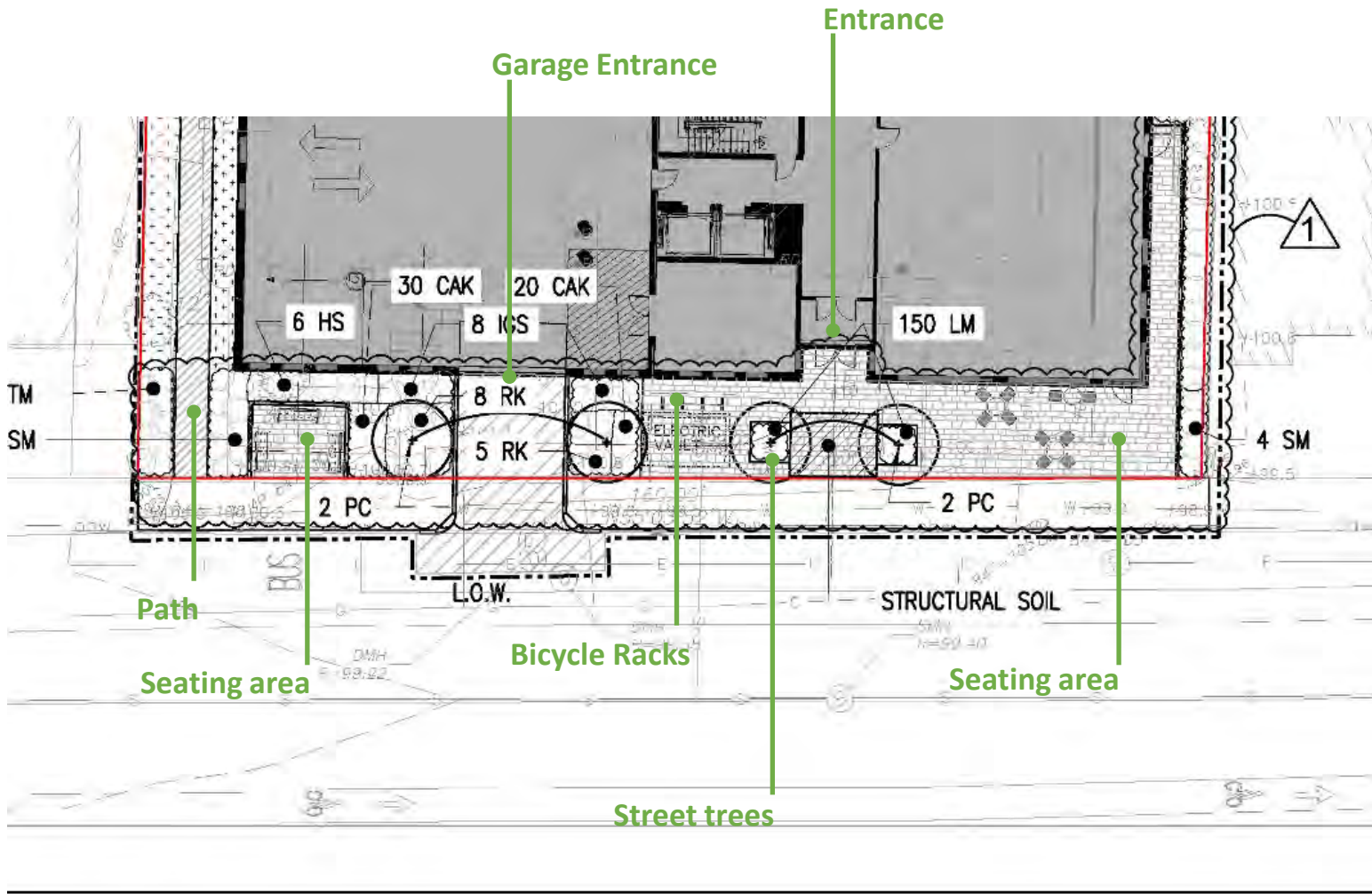
NO.	REVISION	DATE
1	REVISION #1	01.23.2023

kzia
KYLE DICK LANDSCAPE ARCHITECTURE, P.C.
30 Bradford Street Suite 302
Boston, MA 02108
617-451-1033
www.kzia.com

DRAFT CONSTRUCTION
DOCUMENT SET

Job Number:
Project: ARLINGTON RES
Drawn By: YL Checked By: KZ
Date: SEPTEMBER 8, 2022
Scale: 1/8"=1'-0"
Drawing Title:

PLANTING PLAN



Frontage

1021-1025 Massachusetts Avenue

LEGEND

- L.O.W. LIMIT OF WORK LINE
- SHRUBS/PERENNIALS

- DECIDUOUS TREE, TYP.
- EVERGREEN TREE, TYP.

- MEADOW SEED MIX
NEW ENGLAND SHOWY WILDFLOWER MIX
- UNDERSTORY SEED MIX
NEW ENGLAND ROADSIDE MATRIX UPLAND SEED MIX

TREE SEEDLINGS

- ar ACER RUBRUM
- bo BETULA ALLEGANIENSIS
- bl BETULA LENTA
- bp BETULA POPULIFOLIA
- cc CARPINUS CAROLINIANA

Emergency Access Path

Accessible Path

Stormwater Infiltration

Meadow

Meadow

Lower Height Planting

Urban Park

1021-1025 Massachusetts Avenue





Urban Park

1021-1025 Massachusetts Avenue



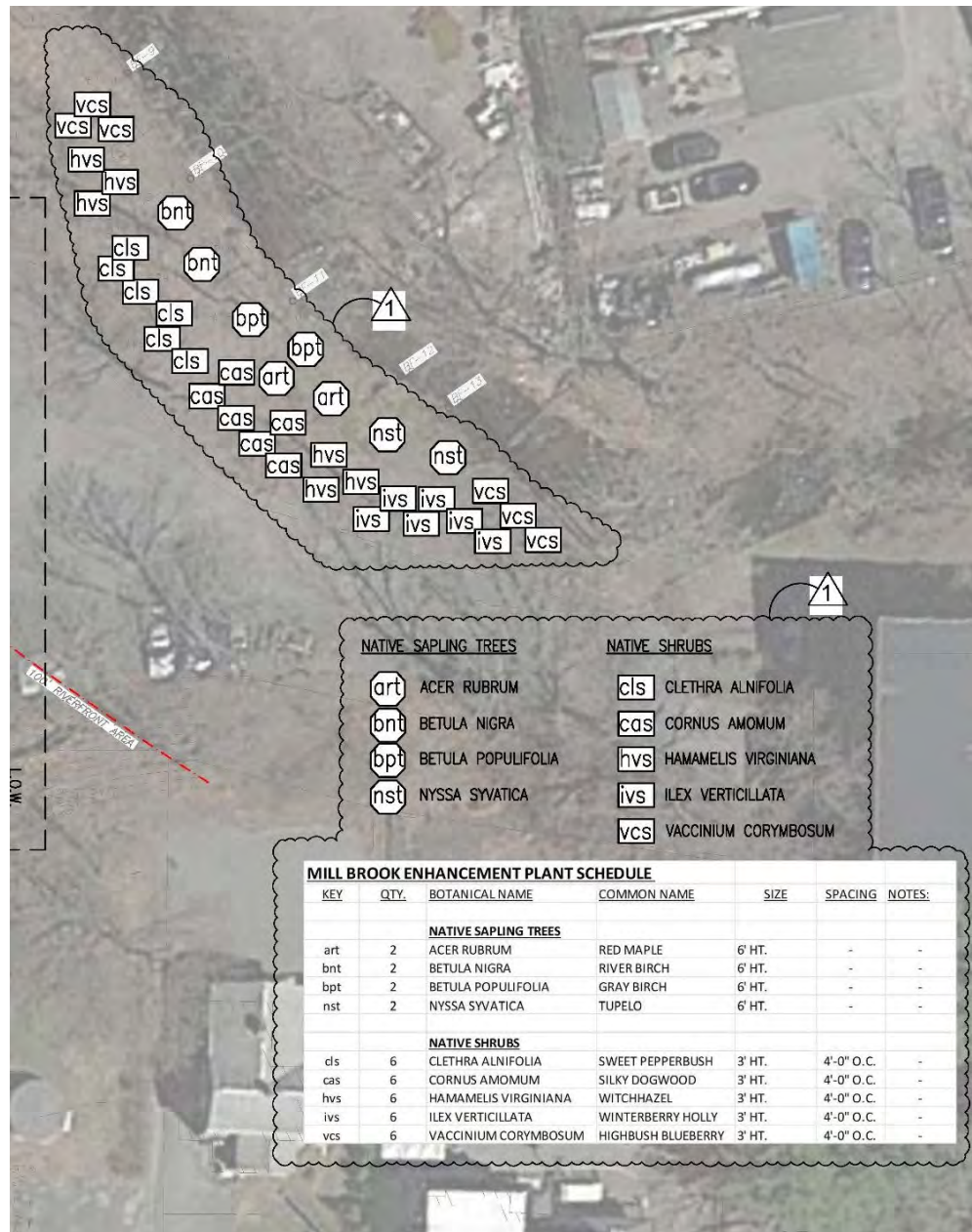
Urban Park

1021-1025 Massachusetts Avenue



Urban Park

1021-1025 Massachusetts Avenue

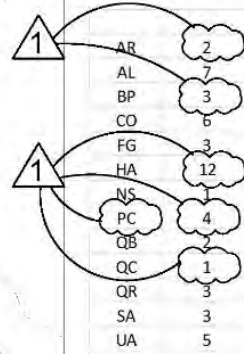


Mill Brook Enhancement

1021-1025 Massachusetts Avenue

#78.1

PLANT SCHEDULE



KEY	QTY.	BOTANICAL NAME	COMMON NAME	SIZE	SPACING	NOTES:
DECIDUOUS TREES						
AR	2	ACER RUBRUM	RED MAPLE	2" CAL.	-	SPRING DIG ONLY
AL	7	AMELANCHIER CANADENSIS L. MEDIK.	SHADBLOW SERVICEBERRY	12' HT.	-	MULTI-STEM
BP	3	BETULA PAPYRIFERA	PAPER BIRCH	12' HT.	-	MULTI-STEM
CO	6	CARYA OVATA	SHAGBARK HICKORY	1" CAL.	-	-
FG	3	FAGUS GRANDIFLORA	AMERICAN BEECH	1" CAL.	-	SPRING DIG ONLY
HA	12	HAMAMELIS X INTERMEDIA 'ARNOLD PROMISE'	WITCHHAZEL	8' B&B	-	CLUMP FORM
NS	3	NYSSA SYLVATICA	SOURGUM	2" CAL.	-	SPRING DIG ONLY
PC	4	PRUNUS SARGENTII 'COLUMARIS'	COLUMNAR SARGENT CHERRY	3" CAL.	-	-
QB	3	QUERCUS BICOLOR	SWAMP WHITE OAK	2" CAL.	-	SPRING DIG ONLY
QC	1	QUERCUS COCCINEA	SCARLET OAK	2" CAL.	-	SPRING DIG ONLY
QR	3	QUERCUS RUBRA	RED OAK	2" CAL.	-	SPRING DIG ONLY
SA	3	SASSAFRAS ALBIDUM	SASSAFRAS	1" CAL.	-	-
UA	5	ULMUS AMERICANA 'PRINCETON'	PRINCETON AMERICAN ELM	2" CAL.	-	SPRING DIG ONLY
TREE SEEDLINGS						
ar	12	ACER RUBRUM	RED MAPLE	4' HT.	-	-
ba	12	BETULA ALLEGHANIENSIS	YELLOW BIRCH	4' HT.	-	-
bl	12	BETULA LENTA	SWEET BIRCH	4' HT.	-	-
bp	12	BETULA POPULIFOLIA	GRAY BIRCH	4' HT.	-	-
cc	12	CARPINUS CAROLINIANA	AMERICAN HORNBEAM	4' HT.	-	-
EVERGREEN TREES						
JV	4	JUNIPERUS VIRGINIANA	EASTERN RED CEDAR	6' HT.	-	-
PS	7	PINUS STROBUS	EASTERN WHITE PINE	6' HT.	-	-
SHRUBS						
AA	7	ARONIA ARBUTIFOLIA	RED CHOKEBERRY	36" HT.	5'-0" O.C.	-
AP	9	AESCULUS PARVIFLORA	BOTTLEBRUSH BUCKEYE	36" HT.	4'-0" O.C.	-
CA	11	CLETHRA ALNIFOLIA	SUMMERSWEET	24" HT.	3'-0" O.C.	-
CAK	50	CALAMAGROSTIS X ACUTIFLORA 'KAL FOERSTEER'	FEATHER REED GRASS	24" HT.	1'-6" O.C.	-
CS	10	CORNUS SERICEA	REDWIG DOGWOOD	36" HT.	4'-0" O.C.	-
HS	6	HIBISCUS SYRIACUS	LIL' KIM ROSE OF SHARON	36" HT.	4'-0" O.C.	-
IG	16	ILEX GLABRA	INKBERRY	3 GAL.	4'-0" O.C.	-
IGS	8	ILEX GLABRA 'SHAMROCK'	SHAMROCK INKBERRY	3 GAL.	4'-0" O.C.	-
LB	13	LINDERA BENZOIN	SPICEBUSH	36" HT.	6'-0" O.C.	-
RA	13	RHUS AROMATICA 'GRO-LOW'	GRO-LOW FRAGRANT SUMAC	24" SPREAD	3'-0" O.C.	-
RK	13	ROSA 'KNOCK OUT'	WHITE KNOCK OUT ROSE	24" HT.	4'-0" O.C.	-
RV	8	ROSA VIRGINIANA	VIRGINIA ROSE	36" HT.	5'-0" O.C.	-
SM	13	SYRINGA MEYERI 'PALIBIN'	DWARF KOREAN LILAC	36" HT.	4'-0" O.C.	-
TM	28	TAXUS X MEDIA 'HICKSII'	HICKS YEW	36" HT.	4'-0" O.C.	-
VC	9	VACCINIUM CORYMBOSUM	HIGHBUSH BLUEBERRY	24" HT.	4'-0" O.C.	-
VD	14	VIBURNUM DENTATUM	ARROWWOOD	36" HT.	5'-0" O.C.	-
GRASS						
LM	150	LIRIOPE MUSCARI	BIG BLUE LILYTURF	PLUGS	8" O.C.	-

SEED MIX

LEGEND

- L.O.W. LIMIT OF WORK LINE
- TREE PROTECTION FENCE
- ✕ TREE REMOVAL TYP. (TOTAL 79)
- R&D REMOVE AND DISPOSE
- R&S REMOVE AND STOCKPILE
- R&R REMOVE AND RESET



SITE PREPARATION AND DEMOLITION NOTES:

1. PRIOR TO COMMENCING ANY EXCAVATION WORK, THE CONTRACTOR SHALL NOTIFY ALL UTILITY COMPANIES IN ACCORDANCE WITH THE "DIG SAFELY" NOTIFICATION PROCEDURES PROMOTED BY RESPECTIVE UTILITY COMPANIES. THE DIG SAFE TELEPHONE NUMBER FOR MASSACHUSETTS IS 811.
2. THE LOCATIONS OF ALL UNDERGROUND UTILITIES SHOWN ON THIS PLAN ARE DIAGRAMMATIC ONLY. THE CONTRACTOR SHALL CONTACT THE PROPER LOCAL AUTHORITIES OR RESPECTIVE UTILITY COMPANY TO CONFIRM THE LOCATION OF ALL EXISTING UTILITIES BEFORE COMMENCING WORK. ANY DAMAGE DUE TO FAILURE OF THE CONTRACTOR TO CONTACT THE PROPER AUTHORITIES SHALL BE BORNE BY THE CONTRACTOR.
3. ALL REFUSE, DEBRIS AND MISCELLANEOUS ITEMS TO BE REMOVED, THAT ARE NOT TO BE STOCKPILED FOR LATER USE ON THE PROJECT OR DELIVERED TO THE OWNER, SHALL BE LEGALLY DISPOSED OF OFF-SITE BY THE CONTRACTOR.
4. ALL ITEMS REQUIRING REMOVAL SHALL BE REMOVED TO FULL DEPTH TO INCLUDE BASE MATERIAL AND FOOTINGS OR FOUNDATIONS AS APPLICABLE, AND REUSED AS DIRECTED BY THE OWNER OR LEGALLY DISPOSED OF OFF-SITE BY CONTRACTOR.
5. CONTRACTOR SHALL STRIP AND STOCKPILE EXISTING TOPSOIL TO FULL DEPTH WITHIN LIMIT OF GRADING BEFORE COMMENCING EXCAVATION AND GRADING OPERATIONS. TOPSOIL SHALL NOT BE REMOVED FROM THE SITE, UNLESS APPROVED BY THE LANDSCAPE ARCHITECT.
6. AT ALL LOCATIONS WHERE CONCRETE PAVEMENT OR BITUMINOUS CONCRETE ROADWAY ADJUT NEW CONSTRUCTION, THE EDGE OF THE EXISTING CURB OR PAVEMENT SHALL BE SAWCUT TO A CLEAN, SMOOTH EDGE.
7. THE CONTRACTOR SHALL BE RESPONSIBLE FOR THE PROTECTION OF ALL EXISTING TREES AND PLANTS DESIGNATED TO REMAIN FOR THE LENGTH OF THE CONSTRUCTION PERIOD. THE PLACEMENT OF PROTECTION DEVICES ADDITIONAL TO THOSE NOTED SHALL, HOWEVER, BE AT THE CONTRACTOR'S DISCRETION.
8. DAMAGE TO PLANTS TO REMAIN BY BURNING, BY PUMPING OF WATER, BY CUTTING OF LIVE ROOTS OR BRANCHES, OR BY ANY OTHER MEANS. NO PLANTS TO BE SAVED SHALL BE USED FOR CRANE STAYS, GUYS OR OTHER FASTENINGS. VEHICLES SHALL NOT BE PARKED WITHIN THE DRIP LINE OR WHERE DAMAGE MAY RESULT TO TREES TO BE SAVED. CONSTRUCTION MATERIALS SHALL NOT BE STORED BENEATH TREES TO BE SAVED.
9. THE GENERAL CONTRACTOR SHALL VERIFY ALL EXISTING CONDITIONS IN THE FIELD AND REPORT ANY DISCREPANCIES BETWEEN PLANS AND ACTUAL CONDITIONS TO THE LANDSCAPE ARCHITECT PRIOR TO STARTING WORK.
10. THE GENERAL CONTRACTOR IS RESPONSIBLE FOR ANY DAMAGE TO EXISTING CONDITIONS THAT ARE DUE TO CONTRACTOR OPERATIONS AND WHICH ARE OUTSIDE THE LIMIT OF WORK.
11. THE GENERAL CONTRACTOR SHALL MAINTAIN OR ADJUST TO NEW FINISH GRADE AS NECESSARY ALL UTILITY AND SITE STRUCTURES SUCH AS LIGHT POLES, SIGN POLES, MAN HOLES, CATCH BASINS, HAND HOLES, WATER AND GAS GATES, HYDRANTS, ETC., FROM MAINTAINED UTILITY AND SITE SYSTEMS UNLESS OTHERWISE NOTED ON THE UTILITY DRAWINGS OR AS DIRECTED BY THE LANDSCAPE ARCHITECT.
12. THE GENERAL CONTRACTOR SHALL COORDINATE ALL ADJUSTMENT OR ABANDONMENT OF UTILITIES WITH THE RESPECTIVE UTILITY COMPANY.
13. ALL POINTS OF CONSTRUCTION INGRESS AND EGRESS SHALL BE PROTECTED TO PREVENT TRACKING OF MUD ONTO PUBLIC WAYS. ANY MUD ON PUBLIC WAYS ORIGINATING FROM THE JOB SITE SHALL BE CLEANED BY THE CONTRACTOR.
14. CONTRACTOR SHALL SECURE ALL PERMITS THAT MAY BE REQUIRED FROM ALL JURISDICTION AFFECTED BY THIS WORK.
15. CONTRACTOR SHALL COORDINATE ALL PLACEMENT OF TREE PROTECTION TO BE APPROVED BEFORE DEMOLITION.

NO.	REVISION	DATE
1		01/23/2023

kzi
KYLE ZEK Landscape Architecture, Inc.
38 Brookfield Street Suite 202
Somerville, MA 02148
877-451-1818 Fax
www.kzlandscape.com

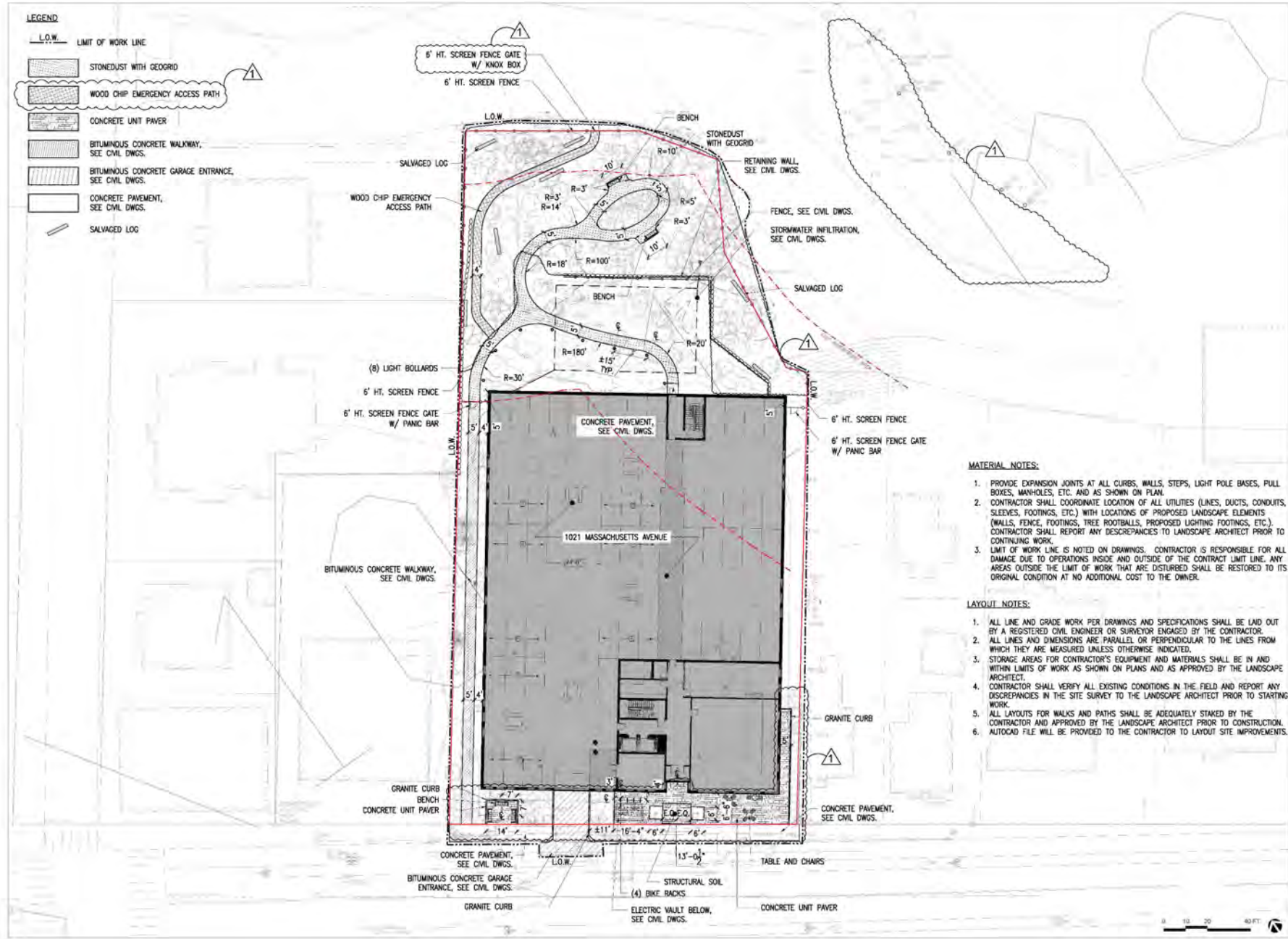
DRAFT CONSTRUCTION
DOCUMENT SET

Job Number:
Project: ARLINGTON RES
Drawn By: K1
Checked By: K2
Date: SEPTEMBER 8, 2023
Scale: 1/4"=1'-0"
Drawing Title:

SITE PREPARATION PLAN

LEGEND

- L.O.W. LIMIT OF WORK LINE
- STONEDUST WITH GEOGRID
- WOOD CHIP EMERGENCY ACCESS PATH
- CONCRETE UNIT PAVEMENT
- BITUMINOUS CONCRETE WALKWAY, SEE CIVIL DWGS.
- BITUMINOUS CONCRETE GARAGE ENTRANCE, SEE CIVIL DWGS.
- CONCRETE PAVEMENT, SEE CIVIL DWGS.
- SALVAGED LOG



MATERIAL NOTES:

1. PROVIDE EXPANSION JOINTS AT ALL CURBS, WALLS, STEPS, LIGHT POLE BASES, PULL BOXES, MANHOLES, ETC. AND AS SHOWN ON PLAN.
2. CONTRACTOR SHALL COORDINATE LOCATION OF ALL UTILITIES (LINES, DUCTS, CONDUITS, SLEEVES, FOOTINGS, ETC.) WITH LOCATIONS OF PROPOSED LANDSCAPE ELEMENTS (WALLS, FENCE, FOOTINGS, TREE ROOTBALLS, PROPOSED LIGHTING FOOTINGS, ETC.). CONTRACTOR SHALL REPORT ANY DISCREPANCIES TO LANDSCAPE ARCHITECT PRIOR TO CONTINUING WORK.
3. LIMIT OF WORK LINE IS NOTED ON DRAWINGS. CONTRACTOR IS RESPONSIBLE FOR ALL DAMAGE DUE TO OPERATIONS INSIDE AND OUTSIDE OF THE CONTRACT LIMIT LINE. ANY AREAS OUTSIDE THE LIMIT OF WORK THAT ARE DISTURBED SHALL BE RESTORED TO ITS ORIGINAL CONDITION AT NO ADDITIONAL COST TO THE OWNER.

LAYOUT NOTES:

1. ALL LINE AND GRADE WORK PER DRAWINGS AND SPECIFICATIONS SHALL BE LAID OUT BY A REGISTERED CIVIL ENGINEER OR SURVEYOR ENGAGED BY THE CONTRACTOR.
2. ALL LINES AND DIMENSIONS ARE PARALLEL OR PERPENDICULAR TO THE LINES FROM WHICH THEY ARE MEASURED UNLESS OTHERWISE INDICATED.
3. STORAGE AREAS FOR CONTRACTOR'S EQUIPMENT AND MATERIALS SHALL BE IN AND WITHIN LIMITS OF WORK AS SHOWN ON PLANS AND AS APPROVED BY THE LANDSCAPE ARCHITECT.
4. CONTRACTOR SHALL VERIFY ALL EXISTING CONDITIONS IN THE FIELD AND REPORT ANY DISCREPANCIES IN THE SITE SURVEY TO THE LANDSCAPE ARCHITECT PRIOR TO STARTING WORK.
5. ALL LAYOUTS FOR WALKS AND PATHS SHALL BE ADEQUATELY STAKED BY THE CONTRACTOR AND APPROVED BY THE LANDSCAPE ARCHITECT PRIOR TO CONSTRUCTION.
6. AUTOCAD FILE WILL BE PROVIDED TO THE CONTRACTOR TO LAYOUT SITE IMPROVEMENTS.

1021-1025
MASSACHUSETTS
AVENUE

ARLINGTON, MASSACHUSETTS
MAJ INVESTMENT, LLC

NO.	REVISION	DATE
1	REVISION #1	01/23/2023

kz
KYLE ZISK LANDSCAPE ARCHITECTURE, INC.
28 Brookfield Street Suite 202
Boston, MA 02116
877.451.1818 Fax
www.kzlandscape.com

DRAFT CONSTRUCTION
DOCUMENT SET

Job Number:
Project: ARLINGTON RES.
Drawn By: YI Checked By: KZ
Date: SEPTEMBER 8, 2023
Scale: 1/4"=1'-0"
Drawing Title:

LAYOUT AND MATERIAL PLAN

LEGEND

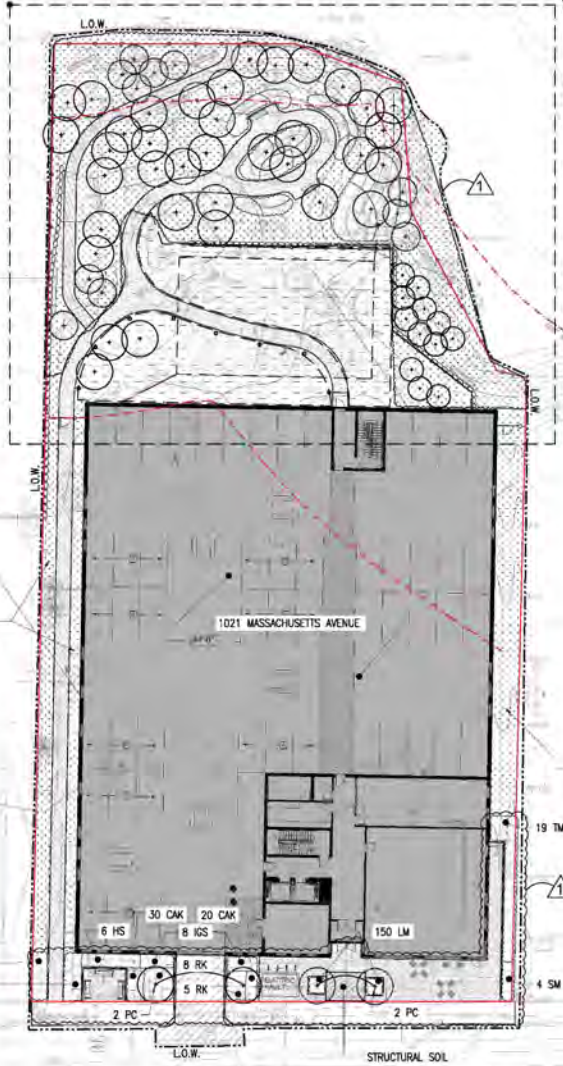
- L.O.W. LIMIT OF WORK LINE
- DECIDUOUS TREE, TYP.
- SHRUBS/PERENNIALS
- EVERGREEN SHRUBS
- EVERGREEN TREE, TYP.
- MEADOW SEED MIX
- NEW ENGLAND SHOWY WILDFLOWER MIX
- UNDERSTORY SEED MIX
- NEW ENGLAND ROADSIDE MATRIX UPLAND SEED MIX

NOTE: TOPSOIL FOR LANDSCAPE SHALL BE LOAMY SANDY WITH 5-8% ORGANIC CONTENT AND Ph 6.0-7.3

PLANTING NOTES:

1. IF DISCREPANCIES EXIST BETWEEN THE NUMBER OF PLANTS DRAWN ON THE PLANTING PLAN AND THE NUMBER OF PLANTS IN THE PLANT SCHEDULE, THE PLANTING PLAN SHALL GOVERN.
2. ALL NEW PLANT MATERIAL SHALL CONFORM TO THE MINIMUM GUIDELINES ESTABLISHED FOR NURSERY STOCK PUBLISHED BY THE AMERICAN ASSOCIATION OF NURSEMEN, INC. IN ADDITION, ALL NEW PLANT MATERIAL FOR THE PROJECT SHALL BE OF SPECIMEN QUALITY.
3. ALL NEW PLANTS TO BE BALLED AND BURLAPPED OR CONTAINER-GROWN, UNLESS OTHERWISE NOTED ON THE PLANT SCHEDULE.
4. THE CONTRACTOR SHALL SUPPLY ALL NEW PLANT MATERIAL IN QUANTITIES SUFFICIENT TO COMPLETE THE PLANTING SHOWN ON THE DRAWINGS.
5. ANY PROPOSED SUBSTITUTIONS OF PLANT SPECIES SHALL BE MADE WITH PLANTS OF EQUIVALENT OVERALL FORM, HEIGHT, BRANCHING HABIT, FLOWER, LEAF, COLOR, FRUIT AND CULTURE, AND SHALL BE NATIVE PLANTS ON THE QUOTED PLANTING LIST. ALL SUBSTITUTIONS SHALL REQUIRE WRITTEN APPROVAL OF THE LANDSCAPE ARCHITECT.
6. ALL NEW PLANTS SHALL BE TAGGED AND APPROVED BY THE LANDSCAPE ARCHITECT AT THE NURSERY PRIOR TO DIGGING OR DELIVERY TO THE SITE.
7. CONTRACTOR SHALL LOCATE AND VERIFY ALL EXISTING UTILITY LINES PRIOR TO PLANTING AND SHALL REPORT ANY CONFLICTS TO THE LANDSCAPE ARCHITECT. STAKE LOCATION OF ALL PROPOSED PLANTING FOR APPROVAL BY LANDSCAPE ARCHITECT PRIOR TO THE COMMENCEMENT OF PLANTING.
8. TREES SHALL BE SET 3" HIGHER THAN PREVIOUS GRADE. NO TREES SHALL BE PLANTED BEFORE ACCEPTANCE OF ROUGH GRADING.
9. ALL EXISTING TREES TO REMAIN SHALL BE PROPERLY PROTECTED DURING CONSTRUCTION. PROTECTION TECHNIQUES SHALL BE REVIEWED AND APPROVED BY THE LANDSCAPE ARCHITECT. THE PLACEMENT OF PROTECTION DEVICES ADDITIONAL TO THOSE NOTED SHALL, HOWEVER, BE AT THE CONTRACTOR'S DISCRETION.
10. CONTRACTOR SHALL PROVIDE FULL DEPTHS OF LOAM AS NOTED ON DETAILS AND AS SPECIFIED, FOR ALL PLANTING.
11. CONTRACTOR SHALL COORDINATE LOCATION OF ALL UTILITIES (LINES, DUCTS, CONDUITS, SLEEVES, FOOTINGS, ETC.) WITH LOCATIONS OF PROPOSED LANDSCAPE ELEMENTS (WALLS, FENCES, FOOTINGS, TREE ROOTBALLS, PROPOSED LIGHTING FOOTINGS, ETC.). CONTRACTOR SHALL REPORT ANY DISCREPANCIES TO LANDSCAPE ARCHITECT PRIOR TO CONTINUING WORK.
12. IN AREAS WHERE EXISTING PAVEMENTS ARE REMOVED AND ARE PROPOSED AS TURF, THE CONTRACTOR SHALL REMOVE THE PAVEMENT AND BASE, PROVIDE FILL AND 6" TOPSOIL PRIOR TO SEEDING.

REFER TO SHEET L4 FOR ENLARGED PLANTING PLAN



- | | |
|-----------------------------|----------------------|
| NATIVE SAPLING TREES | NATIVE SHRUBS |
| ACER RUBRUM | CLETHRA ALNIFOLIA |
| BETULA NIGRA | CORNUS AMOMUM |
| BETULA POPULIFOLIA | HAMMELIS VIRGINIANA |
| NYSSA SYVATICA | ILEX VERTICILLATA |
| | VACCINIUM CORYMBOSUM |

MILL BROOK ENHANCEMENT PLANT SCHEDULE

KEY	QTY	BOTANICAL NAME	COMMON NAME	SIZE	SPACING NOTES
NATIVE SAPLING TREES					
art	2	ACER RUBRUM	RED MAPLE	6" HT.	
bn	2	BETULA NIGRA	RIVER BIRCH	6" HT.	
bpf	2	BETULA POPULIFOLIA	GRAY BIRCH	6" HT.	
nst	2	NYSSA SYVATICA	TUPLO	6" HT.	
NATIVE SHRUBS					
cls	6	CLETHRA ALNIFOLIA	SWEET PEPPERBUSH	3" HT.	4'-0" O.C.
cas	8	CORNUS AMOMUM	SILKY DOGWOOD	3" HT.	4'-0" O.C.
hvs	8	HAMMELIS VIRGINIANA	WITCHHAZEL	3" HT.	4'-0" O.C.
ivs	8	ILEX VERTICILLATA	WHITESBERRY HEDGE	3" HT.	4'-0" O.C.
vcs	8	VACCINIUM CORYMBOSUM	HIGHBUSH BLUEBERRY	3" HT.	4'-0" O.C.

UNDERSTORY SEED MIX
NEW ENGLAND ROADSIDE
MATRIX UPLAND SEED MIX

UNDERSTORY SEED MIX
NEW ENGLAND ROADSIDE
MATRIX UPLAND SEED MIX

** SEE L5 FOR PLANT SCHEDULE

REVISION #1	01/23/2023
-------------	------------

kzi
KZI & ASSOCIATES, INC.
100 Brookfield Street, Suite 202
Boston, MA 02108
Tel: 617.451.1818
www.kzinc.com

DRAFT CONSTRUCTION
DOCUMENT SET

Job Number:
Project: ARLINGTON RES.
Drawn By: E1
Checked By: K2
Date: SEPTEMBER 8, 2023
Scale: 1/4"=1'-0"
Drawing Title:

PLANTING PLAN

LEGEND

- L.O.W. LIMIT OF WORK LINE
- DECIDUOUS TREE, TYP.
- EVERGREEN TREE, TYP.
- MEADOW SEED MIX
- NEW ENGLAND SHOWY WILDFLOWER MIX
- UNDERSTORY SEED MIX
- NEW ENGLAND ROADSIDE MATRIX UPLAND SEED MIX

TREE SEEDLINGS

- ACER RUBRUM
- BETULA ALLEGANIENSIS
- BETULA LENTA
- BETULA POPULIFOLIA
- CARPINUS CAROLINIANA



PLANT SCHEDULE

SET	QTY	BOTANICAL NAME	COMMON NAME	SIZE	SPACING	NOTES
DECIDUOUS TREES						
AR	2	ACER RUBRUM	RED MAPLE	2" CAL		SPRING DIG ONLY
AL	1	AMELANCHIER CANADENSIS L. MEDK.	SHADBLOW SERVICEBERRY	12" HT.		AUGUST STEM
BP	1	BETULA PAPERIFERA	PAPER BIRCH	12" HT.		MAINT. STEM
CO	1	CORYLIA OVATA	SHAGBARK HICKORY	1" CAL		
FG	1	FAGUS GRANDIFLORA	AMERICAN BEECH	1" CAL		SPRING DIG ONLY
HM	1	HAMAMULUS X INTERMEDIUS 'ARNOLD PROMISE'	WITCHHAZEL	3" DIA.		CLAMP FORM
IS	1	NYSSA SYRIACA	SCOURGE	2" CAL		SPRING DIG ONLY
PC	1	PRUNUS SARGENTII 'COLLARIANS'	COLUMBIAN SARGENT CHERRY	3" CAL		
OR	1	QUERCUS BICOLOR	SWAMP WHITE OAK	2" CAL		SPRING DIG ONLY
OC	1	QUERCUS COCCONIA	SCARLET OAK	2" CAL		SPRING DIG ONLY
OR	1	QUERCUS RUBRA	RED OAK	2" CAL		SPRING DIG ONLY
SA	1	SASSAPARILLA ALBIDUM	SASSAPARILLA	1" CAL		
UA	1	ULMUS AMERICANA 'PRINCETON'	PRINCETON AMERICAN ELM	2" CAL		SPRING DIG ONLY
TREE SEEDLINGS						
AR	12	ACER RUBRUM	RED MAPLE	4" HT.		
AL	12	BETULA ALLEGANIENSIS	YELLOW BIRCH	4" HT.		
BL	12	BETULA LENTA	SWEET BIRCH	4" HT.		
BP	12	BETULA POPULIFOLIA	GRAY BIRCH	4" HT.		
CC	12	CARPINUS CAROLINIANA	AMERICAN HORNBEAM	4" HT.		
EVERGREEN TREES						
JV	4	JUNIPERUS VIRGINIANA	EASTERN RED CEDAR	6" HT.		
PS	7	PAULUS STROBUS	EASTERN WHITE PINE	6" HT.		
SHRUBS						
AA	7	ARONIA ARBUTIFOLIA	RED CHOCHEBERRY	36" HT.	5'-0" O.C.	
AP	9	ASCOCALUS PARVIFLORA	SCOTTLAND BUCKEYE	36" HT.	4'-0" O.C.	
CA	11	CARYOPHALLUS	SHRUB ROSE	24" HT.	3'-0" O.C.	
CAL	30	CLAMAGROSTIS X ACUTIFLORA 'KAL FODRSTEUR'	FEATHER REED GRASS	36" HT.	1'-0" O.C.	
CS	30	CORYLUS CORNUTA	HEALTHY HAZELNUT	36" HT.	6'-0" O.C.	
HS	6	HIBISCUS SYRIACUS	IR. KIM ROSE OF SHARON	36" HT.	4'-0" O.C.	
JA	10	JEA QUERRA	SHRUB	1' CAL	4'-0" O.C.	
LD	9	LEUCOGLAUBA SHARON	SHARON BLUE BERRY	1' CAL	4'-0" O.C.	
LB	13	LINDERA BENZON	SPICEBUSH	36" HT.	6'-0" O.C.	
SA	13	SASSAPARILLA VERO-LIVIA	GRIP LOW FRAGRANT SASSAPARILLA	24" SPREAD	1'-0" O.C.	
RA	13	ROSA 'KNOCK OUT'	WHITE KNOCK OUT ROSE	36" HT.	4'-0" O.C.	
SC	7	SCILLA MARITIMA	SCILLA MARITIMA	36" HT.	3'-0" O.C.	
SM	13	SYRINGA MAYERI 'PALMIR'	SWAMP KOREAN LILAC	36" HT.	4'-0" O.C.	
TM	28	TAXUS X MEDIA 'TRICKY'	HICKS YEW	36" HT.	4'-0" O.C.	
VC	9	VACCINIUM COCCONIA	HIGHBUSH BLUEBERRY	24" HT.	4'-0" O.C.	
VD	14	VIBURNUM DENTATUM	ARROWWOOD	36" HT.	5'-0" O.C.	
GRASSES						
UM	150	LIRIOPE MUSCARI	BIG BLUE LILYTURF	PLUGS	8" O.C.	

1021-1025 MASSACHUSETTS AVENUE

ARLINGTON, MASSACHUSETTS
MAJ INVESTMENT, LLC

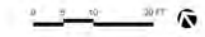
REVISION #1	01/23/2023
NO.	REVISION DATE

kz
 100 North Main Street, Suite 202
 Boston, MA 02110
 857.451.1818 Fax
 www.kzinc.com

DRAFT CONSTRUCTION DOCUMENT SET

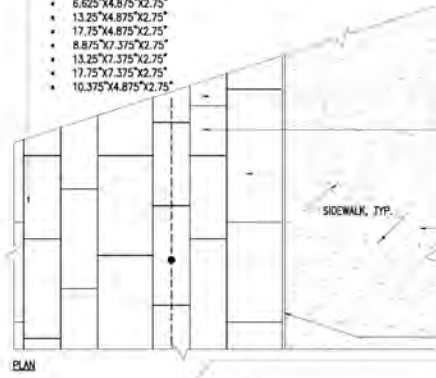
Job Number: _____
 Project: ARLINGTON RES.
 Drawn By: FI Checked By: KZ
 Date: SEPTEMBER 8, 2023
 Scale: 1/4" = 1'-0"
 Drawing Title: _____

ENLARGED PLANTING PLAN



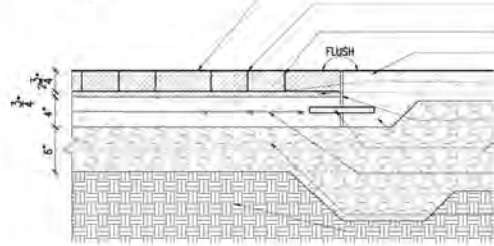
UNIT PAVER, TYP.: ARTLINE UMBRIANO FROM UNILOCK
/TRENCH GREY/7 SIZES TOGETHER ON A PALLET:

- 6.625"x4.875"x2.75"
- 13.25"x4.875"x2.75"
- 17.75"x4.875"x2.75"
- 8.875"x7.375"x2.75"
- 13.25"x7.375"x2.75"
- 17.75"x7.375"x2.75"
- 10.375"x4.875"x2.75"



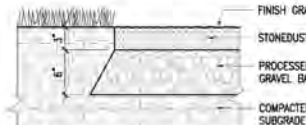
PLAN

NO PIECE SMALLER THAN 1", TYP.
CUT 2ND PAVER TO PROVIDE MIN. SIZE PAVER, TYP.
START LAYING WITH WHOLE PAVERS AGAINST SIDEWALK AS SHOWN, TYP.
CONCRETE PAVEMENT, SEE CIVIL DWGS.
TYPICAL RUNNING BOND PARALLEL TO BUILDING FACE, TYP. SEE PLAN TO CONFIRM THE PATTERN ORIENTATION
EXPANSION JOINT
FINISH GRADE
HAND TIGHT BUTT JOINT, SWEEP WITH SAND UNIT PAVER
CONCRETE PAVEMENT, SEE CIVIL DWGS.
NEOPRENE MASTIC ASPHALT/SAND SETTING BED
EXPANSION JOINT THICKENED EDGE
EXPANSION DOWELS, 24" O.C.
CONCRETE BASE W/ 6" X 6" W2.9 X W2.9 WELDED WIRE MESH
GRAVEL SUBBASE
COMPACTED SUBGRADE



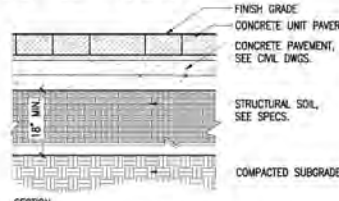
SECTION

1 CONCRETE UNIT PAVER
SCALE: 1-1/2"=1'-0"



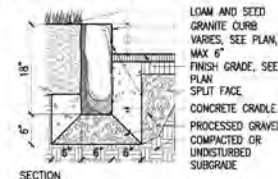
SECTION

3 STONEDUST PAVEMENT
SCALE: 1-1/2"=1'-0"



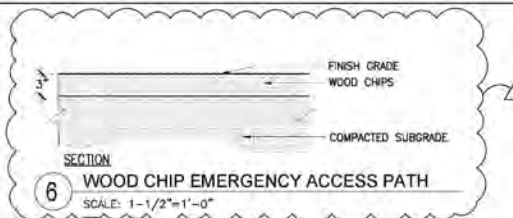
SECTION

4 STRUCTURAL SOIL
SCALE: 1-1/2"=1'-0"



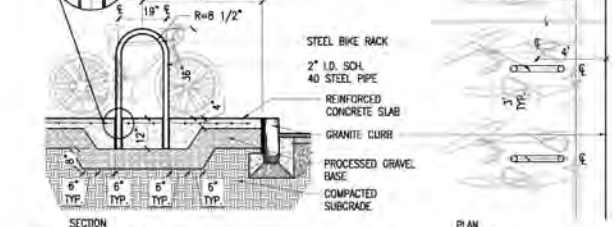
SECTION

5 GRANITE CURB
SCALE: 1"=1'-0"



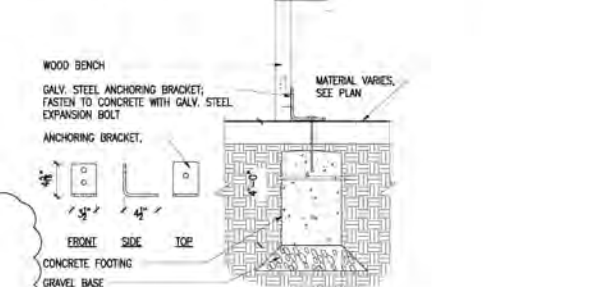
SECTION

6 WOOD CHIP EMERGENCY ACCESS PATH
SCALE: 1-1/2"=1'-0"



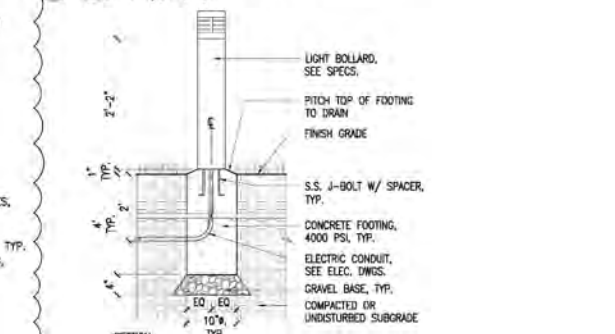
SECTION

7 BIKE RACK
SCALE: 1/2"=1'-0"



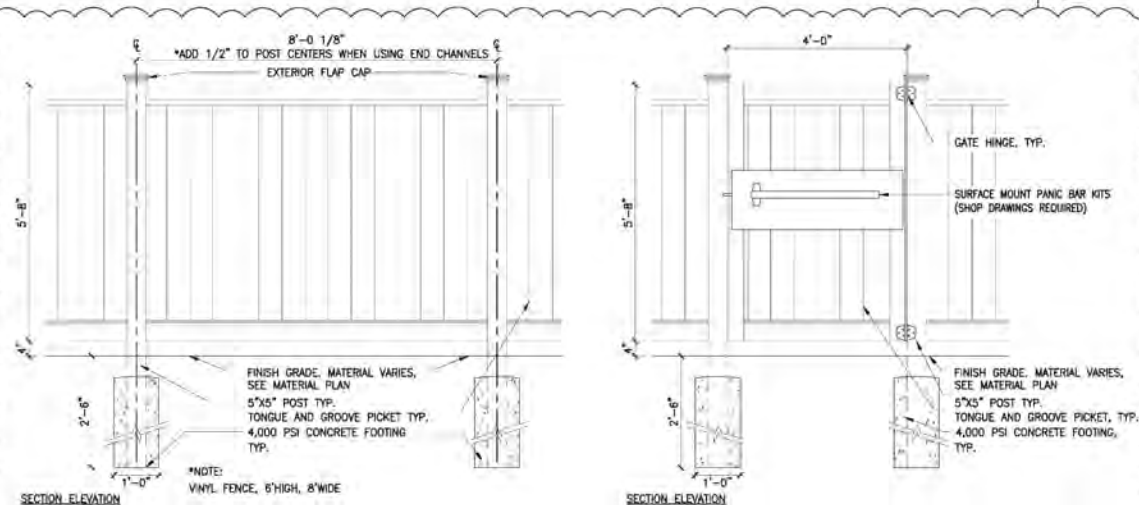
SECTION

8 WOOD BENCH ANCHORING
SCALE: 1-1/2"=1'-0"



SECTION

9 BOLLARD LIGHT FOOTING
SCALE: 1"=1'-0"



SECTION ELEVATION

2 6' HT. VINYL FENCE / GATE
SCALE: AS SHOWN

1021-1025 MASSACHUSETTS AVENUE
ARLINGTON, MASSACHUSETTS
MAJ INVESTMENT, LLC

NO.	REVISION	DATE
1	REVISION #1	01.25.2023

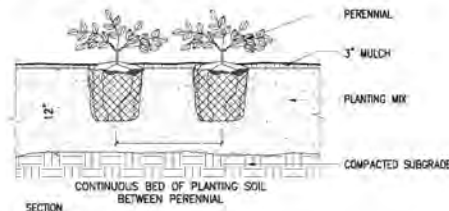
kzi
KZI CONSULTING, INC.
200 Woodland Street, Suite 202
Boston, MA 02116
www.kzi.com

DRAFT CONSTRUCTION DOCUMENT SET

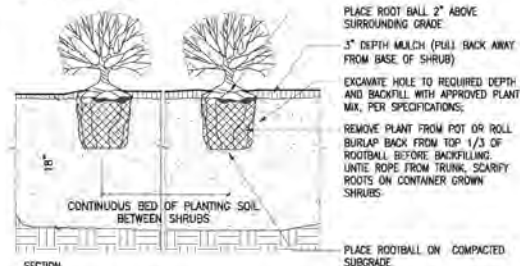
Job Number: ARLINGTON 1025
Project: ARLINGTON RES.
Drawn By: KZ
Checked By: KZ
Date: SEPTEMBER 14, 2023
Scale: 1/2"=1'-0"
Drawing Title:



1 LAWN
SCALE: 1"=1/2"=1'-0"

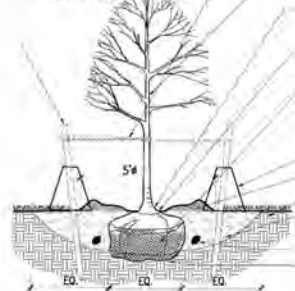


2 PERENNIAL PLANTING
SCALE: 1 1/2"=1'-0"



3 SHRUB PLANTING
SCALE: 1 1/2"=1'-0"

- NOTES:**
- IF CONTAINER GROWN, SCARIFY SOIL AND ROOTS TO REMOVE CIRCLING ROOTS.
 - 8" LONG, 3/4" FIR STAKES; SET STAKES OUTSIDE OF ROOTBALL, LEVEL AND WITH 5'-6" VISIBLE ABOVE GROUND.



4 DECIDUOUS TREE PLANTING
SCALE: N.T.S.

- PIECES OF "ARBOR TIES" SHALL BE LOOPED AROUND TREE TRUNK THROUGH ONE ANOTHER, TWISTED AND SECURED TO STAKE. INSTALL TREE PLUMB.
- TOP OF ROOTBALL SHALL BEAR SAME RELATIONSHIP TO FINISHED GRADE AS TO PREVIOUS EXISTING GRADE. ROOT FLARE SHALL BE EXPOSED; MULCH SHOULD NOT TOUCH TREE TRUNK.
- PLACE BALL ON SUBSOIL, REMOVE AND DISCARD BURLAP EXCEPT UNDER BALL. REMOVE AND DISCARD ALL SYNTHETIC SOIL WRAPPING MATERIALS (TREATED BURLAP, NYLON TWINE, WIRE BASKETS, ETC.).
- WATERING BAGS AT STAKES.
- 3" BARK MULCH.
- DECOMPACTED SUBGRADE.
- EXCAVATE HOLE TO DIAMETER 3X WIDER THAN ROOTBALL. BACKFILL HOLE WITH PLANTING SOIL MIX.
- SLOW RELEASE FERTILIZER.
- EXCAVATE SUBSOIL AS REQUIRED TO PLACE ROOTBALL TO PROPER ELEVATION. PLACE ROOTBALL DIRECTLY ON COMPACTED OR UNDISTURBED SUBSOIL.

- 2"x3"x4" FIR POST; ATTACH GALVANIZED MALLEABLE STEEL CABLE TO POST AND SECURE BY TWISTING TAUTLY; SET ANGLE OF POST & GUY TO ENTER GROUND AT THE LIMIT OF THE SPREAD OF THE BOTTOM BRANCHES; STAKES SHALL BE OUTSIDE OF TREE PIT.

INSTALL 3 GUYS PER TREE EQUALLY SPACED AROUND ROOTBALL. ATTACH 13 GAUGE GALV. MALLEABLE STEEL GUY WIRE 2/3 HEIGHT OF TREE IN REINFORCED RUBBER HOSE, WITH CABLE CLAMPS, SECURE BY TWISTING TAUTLY.

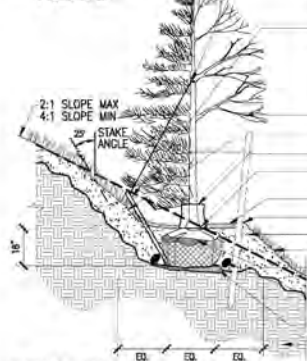
TREE SHALL BE PLANTED WITH TOP OF ROOTBALL BEARING THE SAME RELATIONSHIP TO FINISHED GRADE AS TO PREVIOUS EXISTING GRADE. TREE SHALL BE PLUMB AFTER SETTLEMENT.

- 3" BARK MULCH (HOLD MULCH OFF ROOT FLARE)
- PLANTING SOIL MIX
- WATER BAG
- ROLL BURLAP BACK FROM TOP 1/3 OF ROOTBALL BEFORE BACKFILLING. UNLIE ROPE FROM TRUNK.
- SLOW RELEASE FERTILIZER

FREE DRAINING, UNDISTURBED OR COMPACTED SUBGRADE

5 EVERGREEN TREE PLANTING
SCALE: N.T.S.

- NOTES:**
- ADD HIGH VISIBILITY FLAGGING TO EACH GUY WIRE FOR PUBLIC SAFETY.

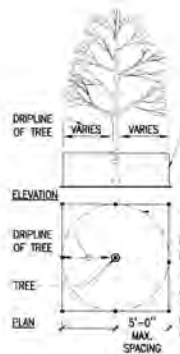


6 TREE PLANTING ON SLOPE
SCALE: N.T.S.

INSTALL 3 GUYS PER TREE EQUALLY SPACED AROUND ROOTBALL. ATTACH 13 GAUGE GALV. MALLEABLE STEEL GUY WIRE 2/3 HEIGHT OF TREE IN REINFORCED RUBBER HOSE, WITH CABLE CLAMPS, SECURE BY TWISTING TAUTLY.

- 2"x3"x4" FIR POST; ATTACH GALVANIZED MALLEABLE STEEL CABLE TO POST AND SECURE BY TWISTING TAUTLY; SET ANGLE OF POST & GUY TO ENTER GROUND AT THE LIMIT OF THE SPREAD OF THE BOTTOM BRANCHES; STAKES SHALL BE OUTSIDE OF TREE PIT.

- DECIDUOUS TREE W/ (2) STAKES
- EROSION MATTING AS SPECIFIED
- WATERING BAG
- TREE SHALL BE PLANTED 3" ABOVE SURROUNDING GRADE. TREE SHALL BE PLUMB AFTER SETTLEMENT.
- 3" MULCH; FULL MULCH AWAY FROM TREE TRUNK
- 3" HIGH EARTH SAUCER AROUND TREE PIT
- PLANTING LOAM AS SPECIFIED
- EROSION CONTROL MATTING AS SPECIFIED
- ROLL BURLAP BACK FROM TOP 1/3 OF ROOTBALL BEFORE BACKFILLING. REMOVE ROPE FROM TRUNK.
- SLOW RELEASE FERTILIZER
- COMPACTED SUBGRADE BENCH UNDER TREE
- UNDISTURBED SUBGRADE OR COMPACTED BACKFILL
- ROUGH GRADE TO REMAIN ON SLOPE.



7 TREE PROTECTION - FENCE
SCALE: N.T.S.

4" HIGH CONSTRUCTION FENCE STAKED 5' O.C. MAXIMUM WITH PRESSED METAL DRIVE STAKES. HAND EXCAVATE WITHIN THIS ZONE. REMOVAL ONLY UPON APPROVAL OF LANDSCAPE ARCHITECT.

INSTALL FENCE OUTSIDE OF DRIFLINE OF TREE

NOTE: DO NOT STORE ANY MACHINERY OR MATERIALS WITHIN AREA OF THE FENCE. DO NOT DISCARD CONSTRUCTION MATERIALS OR SLURRY WITHIN FENCE LIMIT. FENCING TO BE REVIEWED BY LANDSCAPE ARCHITECT PRIOR TO CONSTRUCTION.

NO.	REVISION	DATE
1	REVISION #1	01.25.2023

kzi
KZI CONSULTANTS, INC.
200 Highland Avenue, Suite 200
Boston, MA 02116
Tel: 617.451.1114
www.kzi.com

DRAFT CONSTRUCTION DOCUMENT SET

Job Number: _____

Project: _____

Drawn By: _____ Checked By: _____

Date: _____

Scale: _____

Drawn By: _____

DETAILS

L6