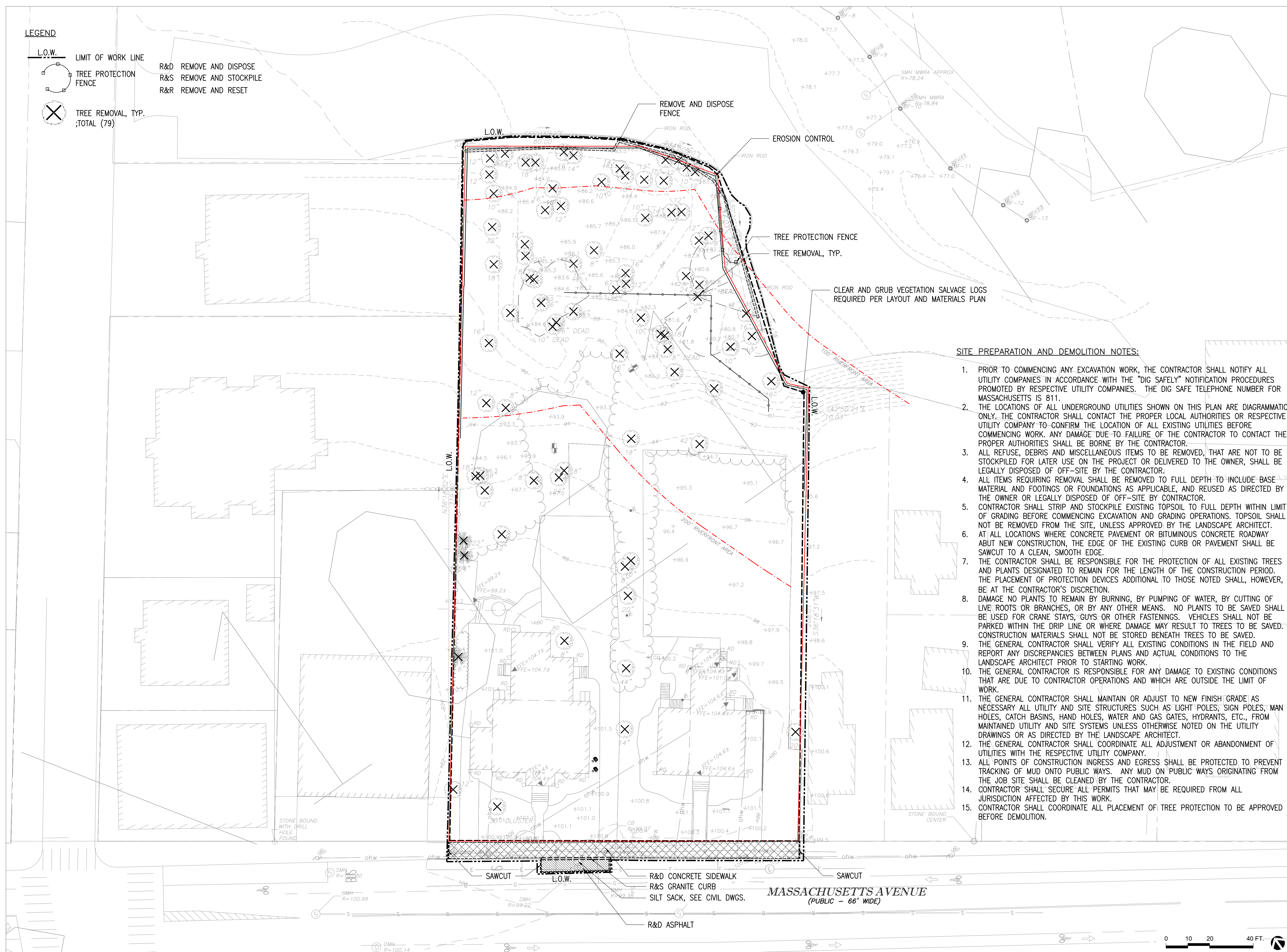


LEGEND

- L.O.W. LIMIT OF WORK LINE
- TREE PROTECTION FENCE
- TREE REMOVAL, TYP. :TOTAL (79)
- R&D REMOVE AND DISPOSE
- R&S REMOVE AND STOCKPILE
- R&R REMOVE AND RESET



SITE PREPARATION AND DEMOLITION NOTES:

1. PRIOR TO COMMENCING ANY EXCAVATION WORK, THE CONTRACTOR SHALL NOTIFY ALL UTILITY COMPANIES IN ACCORDANCE WITH THE "DIG SAFELY" NOTIFICATION PROCEDURES PROMOTED BY RESPECTIVE UTILITY COMPANIES. THE DIG SAFE TELEPHONE NUMBER FOR MASSACHUSETTS IS 811.
2. THE LOCATIONS OF ALL UNDERGROUND UTILITIES SHOWN ON THIS PLAN ARE DIAGRAMMATIC ONLY. THE CONTRACTOR SHALL CONTACT THE PROPER LOCAL AUTHORITIES OR RESPECTIVE UTILITY COMPANY TO CONFIRM THE LOCATION OF ALL EXISTING UTILITIES BEFORE COMMENCING WORK. ANY DAMAGE DUE TO FAILURE OF THE CONTRACTOR TO CONTACT THE PROPER AUTHORITIES SHALL BE BORNE BY THE CONTRACTOR.
3. ALL REFUSE, DEBRIS AND MISCELLANEOUS ITEMS TO BE REMOVED, THAT ARE NOT TO BE STOCKPILED FOR LATER USE ON THE PROJECT OR DELIVERED TO THE OWNER, SHALL BE LEGALLY DISPOSED OF OFF-SITE BY THE CONTRACTOR.
4. ALL ITEMS REQUIRING REMOVAL SHALL BE REMOVED TO FULL DEPTH TO INCLUDE BASE MATERIAL AND FOOTINGS OR FOUNDATIONS AS APPLICABLE, AND REUSED AS DIRECTED BY THE OWNER OR LEGALLY DISPOSED OF OFF-SITE BY CONTRACTOR.
5. CONTRACTOR SHALL STRIP AND STOCKPILE EXISTING TOPSOIL TO FULL DEPTH WITHIN LIMIT OF GRADING BEFORE COMMENCING EXCAVATION AND GRADING OPERATIONS. TOPSOIL SHALL NOT BE REMOVED FROM THE SITE, UNLESS APPROVED BY THE LANDSCAPE ARCHITECT.
6. AT ALL LOCATIONS WHERE CONCRETE PAVEMENT OR BITUMINOUS CONCRETE ROADWAY ABUT NEW CONSTRUCTION, THE EDGE OF THE EXISTING CURB OR PAVEMENT SHALL BE SAWCUT TO A CLEAN, SMOOTH EDGE.
7. THE CONTRACTOR SHALL BE RESPONSIBLE FOR THE PROTECTION OF ALL EXISTING TREES AND PLANTS DESIGNATED TO REMAIN FOR THE LENGTH OF THE CONSTRUCTION PERIOD. THE PLACEMENT OF PROTECTION DEVICES ADDITIONAL TO THOSE NOTED SHALL, HOWEVER, BE AT THE CONTRACTOR'S DISCRETION.
8. DAMAGE NO PLANTS TO REMAIN BY BURNING, BY PUMPING OF WATER, BY CUTTING OF LIVE ROOTS OR BRANCHES, OR BY ANY OTHER MEANS. NO PLANTS TO BE SAVED SHALL BE USED FOR CRANE STAYS, GUYS OR OTHER FASTENINGS. VEHICLES SHALL NOT BE PARKED WITHIN THE DRIP LINE OR WHERE DAMAGE MAY RESULT TO TREES TO BE SAVED. CONSTRUCTION MATERIALS SHALL NOT BE STORED BENEATH TREES TO BE SAVED.
9. THE GENERAL CONTRACTOR SHALL VERIFY ALL EXISTING CONDITIONS IN THE FIELD AND REPORT ANY DISCREPANCIES BETWEEN PLANS AND ACTUAL CONDITIONS TO THE LANDSCAPE ARCHITECT PRIOR TO STARTING WORK.
10. THE GENERAL CONTRACTOR IS RESPONSIBLE FOR ANY DAMAGE TO EXISTING CONDITIONS THAT ARE DUE TO CONTRACTOR OPERATIONS AND WHICH ARE OUTSIDE THE LIMIT OF WORK.
11. THE GENERAL CONTRACTOR SHALL MAINTAIN OR ADJUST TO NEW FINISH GRADE AS NECESSARY ALL UTILITY AND SITE STRUCTURES SUCH AS LIGHT POLES, SIGN POLES, MAN HOLES, CATCH BASINS, HAND HOLES, WATER AND GAS GATES, HYDRANTS, ETC., FROM MAINTAINED UTILITY AND SITE SYSTEMS UNLESS OTHERWISE NOTED ON THE UTILITY DRAWINGS OR AS DIRECTED BY THE LANDSCAPE ARCHITECT.
12. THE GENERAL CONTRACTOR SHALL COORDINATE ALL ADJUSTMENT OR ABANDONMENT OF UTILITIES WITH THE RESPECTIVE UTILITY COMPANY.
13. ALL POINTS OF CONSTRUCTION INGRESS AND EGRESS SHALL BE PROTECTED TO PREVENT TRACKING OF MUD ONTO PUBLIC WAYS. ANY MUD ON PUBLIC WAYS ORIGINATING FROM THE JOB SITE SHALL BE CLEANED BY THE CONTRACTOR.
14. CONTRACTOR SHALL SECURE ALL PERMITS THAT MAY BE REQUIRED FROM ALL JURISDICTION AFFECTED BY THIS WORK.
15. CONTRACTOR SHALL COORDINATE ALL PLACEMENT OF TREE PROTECTION TO BE APPROVED BEFORE DEMOLITION.

REVISION #2	02.17.2023
REVISION #1	01.23.2023

**kzla**  
Kylie Zick Landscape Architecture, Inc.  
36 Bronnfield Street Suite 202  
Boston, MA 02108  
617 451-1018 Tel  
www.kyiezick.com

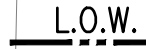







DRAFT CONSTRUCTION DOCUMENT SET

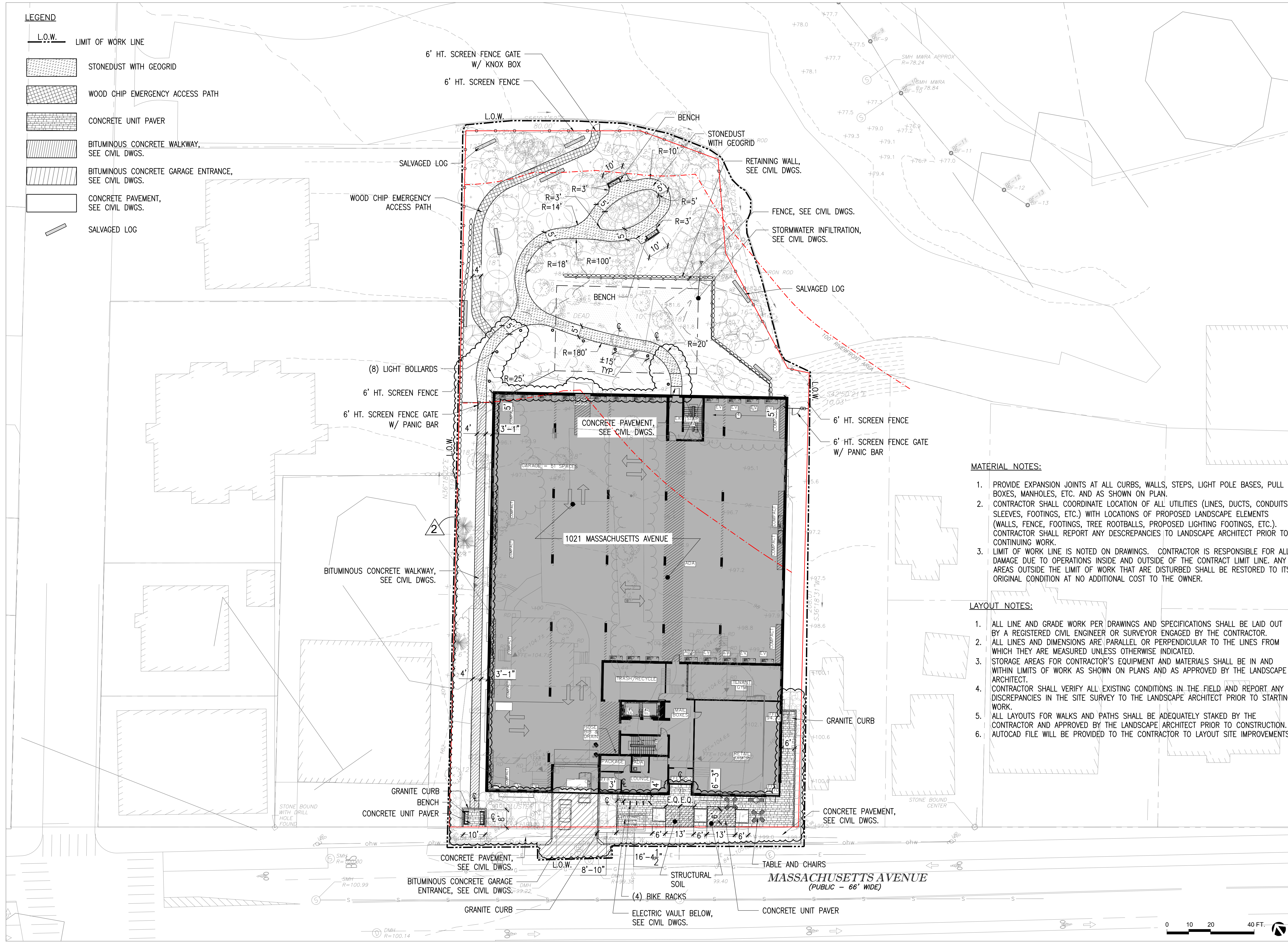
Job Number:	
Project:	ARLINGTON RES.
Drawn By:	YL
Checked By:	KZ
Date:	SEPTEMBER 8, 2022
Scale:	1"=20'-0"
Drawing Title:	

SITE PREPARATION PLAN



**LEGEND**

-  L.O.W. LIMIT OF WORK LINE
-  STONEDUST WITH GEOGRID
-  WOOD CHIP EMERGENCY ACCESS PATH
-  CONCRETE UNIT PAVER
-  BITUMINOUS CONCRETE WALKWAY, SEE CIVIL DWGS.
-  BITUMINOUS CONCRETE GARAGE ENTRANCE, SEE CIVIL DWGS.
-  CONCRETE PAVEMENT, SEE CIVIL DWGS.
-  SALVAGED LOG



**MATERIAL NOTES:**

1. PROVIDE EXPANSION JOINTS AT ALL CURBS, WALLS, STEPS, LIGHT POLE BASES, PULL BOXES, MANHOLES, ETC. AND AS SHOWN ON PLAN.
2. CONTRACTOR SHALL COORDINATE LOCATION OF ALL UTILITIES (LINES, DUCTS, CONDUITS, SLEEVES, FOOTINGS, ETC.) WITH LOCATIONS OF PROPOSED LANDSCAPE ELEMENTS (WALLS, FENCE, FOOTINGS, TREE ROOTBALLS, PROPOSED LIGHTING FOOTINGS, ETC.). CONTRACTOR SHALL REPORT ANY DISCREPANCIES TO LANDSCAPE ARCHITECT PRIOR TO CONTINUING WORK.
3. LIMIT OF WORK LINE IS NOTED ON DRAWINGS. CONTRACTOR IS RESPONSIBLE FOR ALL DAMAGE DUE TO OPERATIONS INSIDE AND OUTSIDE OF THE CONTRACT LIMIT LINE. ANY AREAS OUTSIDE THE LIMIT OF WORK THAT ARE DISTURBED SHALL BE RESTORED TO ITS ORIGINAL CONDITION AT NO ADDITIONAL COST TO THE OWNER.

**LAYOUT NOTES:**

1. ALL LINE AND GRADE WORK PER DRAWINGS AND SPECIFICATIONS SHALL BE LAID OUT BY A REGISTERED CIVIL ENGINEER OR SURVEYOR ENGAGED BY THE CONTRACTOR.
2. ALL LINES AND DIMENSIONS ARE PARALLEL OR PERPENDICULAR TO THE LINES FROM WHICH THEY ARE MEASURED UNLESS OTHERWISE INDICATED.
3. STORAGE AREAS FOR CONTRACTOR'S EQUIPMENT AND MATERIALS SHALL BE IN AND WITHIN LIMITS OF WORK AS SHOWN ON PLANS AND AS APPROVED BY THE LANDSCAPE ARCHITECT.
4. CONTRACTOR SHALL VERIFY ALL EXISTING CONDITIONS IN THE FIELD AND REPORT ANY DISCREPANCIES IN THE SITE SURVEY TO THE LANDSCAPE ARCHITECT PRIOR TO STARTING WORK.
5. ALL LAYOUTS FOR WALKS AND PATHS SHALL BE ADEQUATELY STAKED BY THE CONTRACTOR AND APPROVED BY THE LANDSCAPE ARCHITECT PRIOR TO CONSTRUCTION.
6. AUTOCAD FILE WILL BE PROVIDED TO THE CONTRACTOR TO LAYOUT SITE IMPROVEMENTS.

2	REVISION #2	02.17.2023
1	REVISION #1	01.23.2023
NO.	REVISION	DATE

**kzla**  
Kylie Zick Landscape Architecture, Inc.  
36 Bronnfield Street Suite 202 617 451-1018 Tel  
Boston, MA 02108 www.kyiezick.com

DRAFT CONSTRUCTION  
DOCUMENT SET

Job Number:  
Project: ARLINGTON RES.  
Drawn By: YL Checked By: KZ  
Date: SEPTEMBER 8, 2022  
Scale: 1"=20'-0"  
Drawing Title:

LAYOUT AND MATERIAL PLAN



**LEGEND**

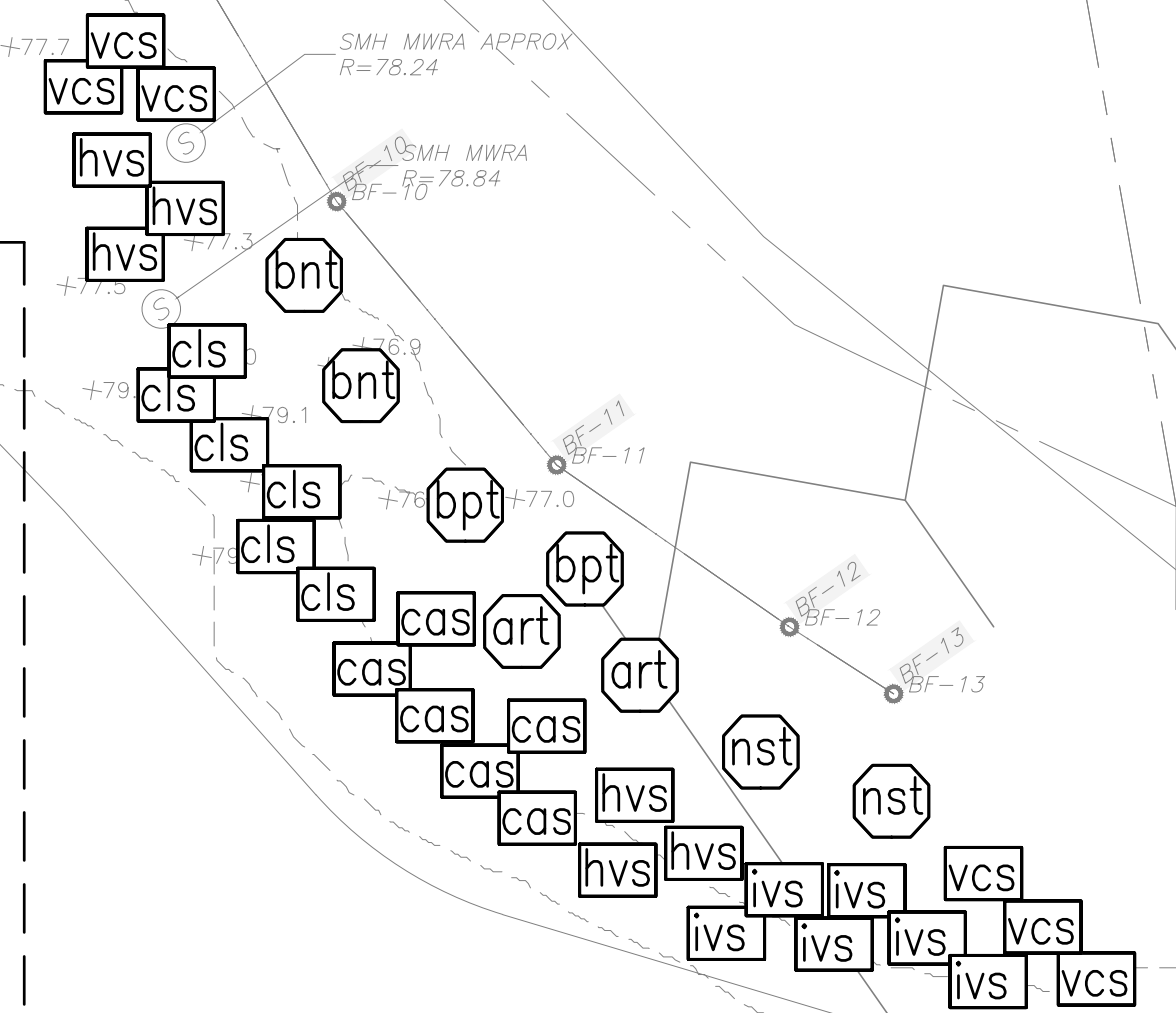
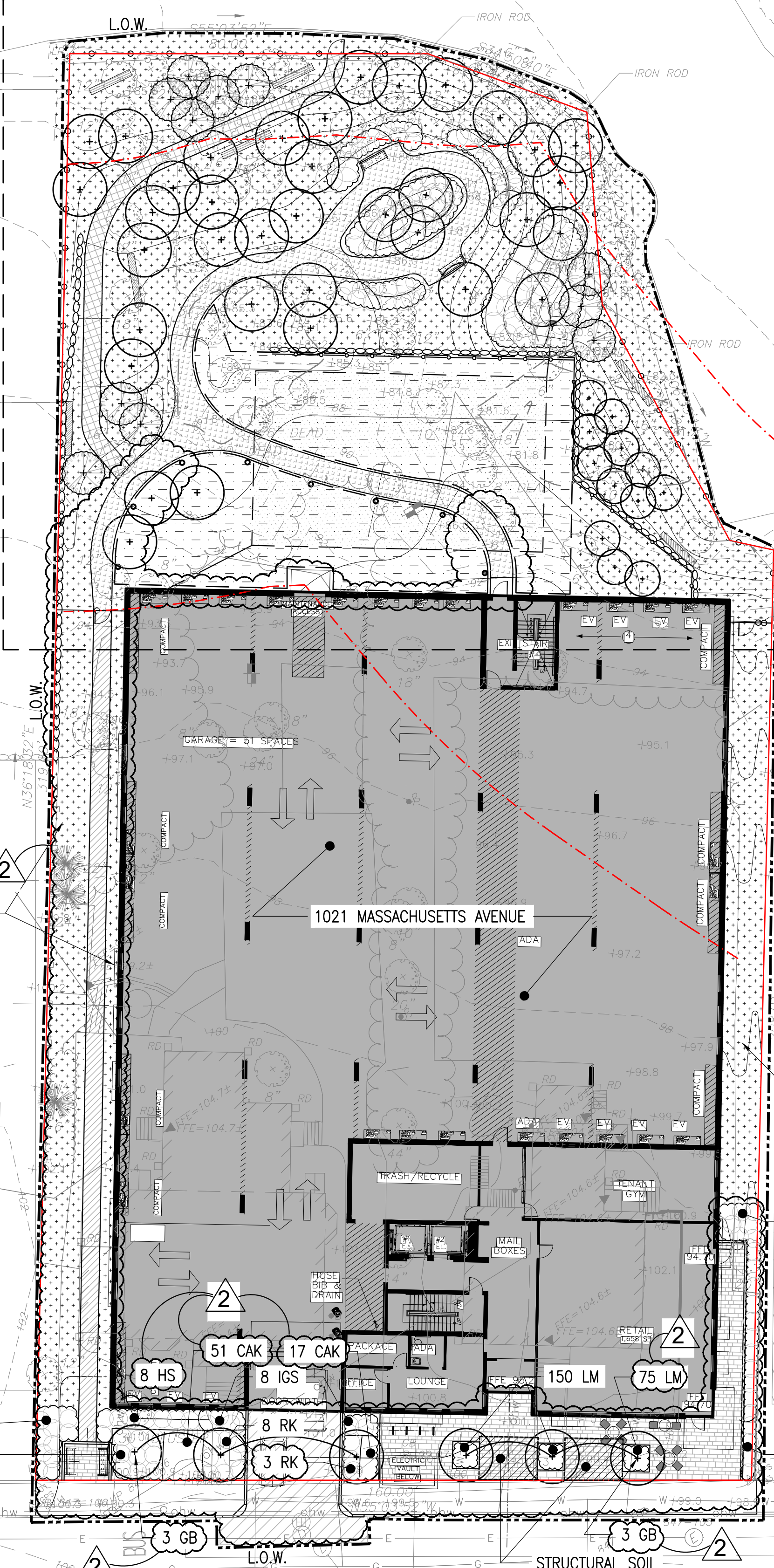
- L.O.W. LIMIT OF WORK LINE
- SHRUBS/PERENNIALS
- MEADOW SEED MIX
- NEW ENGLAND SHOWY WILDFLOWER MIX
- UNDERSTORY SEED MIX
- NEW ENGLAND ROADSIDE MATRIX UPLAND SEED MIX
- DECIDUOUS TREE, TYP.
- EVERGREEN SHRUBS
- EVERGREEN TREE, TYP.

NOTE: TOPSOIL FOR LANDSCAPE SHALL BE LOAMY SANDY WITH 5-8% ORGANIC CONTENT AND Ph 6.0-7.3

**PLANTING NOTES:**

1. IF DISCREPANCIES EXIST BETWEEN THE NUMBER OF PLANTS DRAWN ON THE PLANTING PLAN AND THE NUMBER OF PLANTS IN THE PLANT SCHEDULE, THE PLANTING PLAN SHALL GOVERN.
2. ALL NEW PLANT MATERIAL SHALL CONFORM TO THE MINIMUM GUIDELINES ESTABLISHED FOR NURSERY STOCK PUBLISHED BY THE AMERICAN ASSOCIATION OF NURSERYMEN, INC. IN ADDITION, ALL NEW PLANT MATERIAL FOR THE PROJECT SHALL BE OF SPECIMEN QUALITY.
3. ALL NEW PLANTS TO BE BALLED AND BURLAPPED OR CONTAINER-GROWN, UNLESS OTHERWISE NOTED ON THE PLANT SCHEDULE.
4. THE CONTRACTOR SHALL SUPPLY ALL NEW PLANT MATERIAL IN QUANTITIES SUFFICIENT TO COMPLETE THE PLANTING SHOWN ON THE DRAWINGS.
5. ANY PROPOSED SUBSTITUTIONS OF PLANT SPECIES SHALL BE MADE WITH PLANTS OF EQUIVALENT OVERALL FORM, HEIGHT, BRANCHING HABIT, FLOWER, LEAF, COLOR, FRUIT AND CULTURE, AND SHALL BE NATIVE PLANTS ON THE OLMSTED PLANTING LIST. ALL SUBSTITUTIONS SHALL REQUIRE WRITTEN APPROVAL OF THE LANDSCAPE ARCHITECT.
6. ALL NEW PLANTS SHALL BE TAGGED AND APPROVED BY THE LANDSCAPE ARCHITECT AT THE NURSERY PRIOR TO DIGGING OR DELIVERY TO THE SITE.
7. CONTRACTOR SHALL LOCATE AND VERIFY ALL EXISTING UTILITY LINES PRIOR TO PLANTING AND SHALL REPORT ANY CONFLICTS TO THE LANDSCAPE ARCHITECT.
8. STAKE LOCATION OF ALL PROPOSED PLANTING FOR APPROVAL BY LANDSCAPE ARCHITECT PRIOR TO THE COMMENCEMENT OF PLANTING.
9. TREES SHALL BE SET 3" HIGHER THAN PREVIOUS GRADE. NO TREES SHALL BE PLANTED BEFORE ACCEPTANCE OF ROUGH GRADING.
10. ALL EXISTING TREES TO REMAIN SHALL BE PROPERLY PROTECTED DURING CONSTRUCTION. PROTECTION TECHNIQUES SHALL BE REVIEWED AND APPROVED BY THE LANDSCAPE ARCHITECT. THE PLACEMENT OF PROTECTION DEVICES ADDITIONAL TO THOSE NOTED SHALL, HOWEVER, BE AT THE CONTRACTOR'S DISCRETION.
11. CONTRACTOR SHALL PROVIDE FULL DEPTHS OF LOAM AS NOTED ON DETAILS AND AS SPECIFIED, FOR ALL PLANTING.
12. CONTRACTOR SHALL COORDINATE LOCATION OF ALL UTILITIES (LINES, DUCTS, CONDUITS, SLEEVES, FOOTINGS, ETC.) WITH LOCATIONS OF PROPOSED LANDSCAPE ELEMENTS (WALLS, FENCES, FOOTINGS, TREE ROOTBALLS, PROPOSED LIGHTING FOOTINGS, ETC.). CONTRACTOR SHALL REPORT ANY DISCREPANCIES TO LANDSCAPE ARCHITECT PRIOR TO CONTINUING WORK.
13. IN AREAS WHERE EXISTING PAVEMENTS ARE REMOVED AND ARE PROPOSED AS TURF, THE CONTRACTOR SHALL REMOVE THE PAVEMENT AND BASE, PROVIDE FILL AND 6" TOPSOIL PRIOR TO SEEDING.

REFER TO SHEET L4 FOR ENLARGED PLANTING PLAN



- NATIVE SAPLING TREES**
- art ACER RUBRUM
  - bnt BETULA NIGRA
  - bpt BETULA POPULIFOLIA
  - nst NYSSA SYVATICA
- NATIVE SHRUBS**
- cls CLETHRA ALNIFOLIA
  - cas CORNUS AMOMUM
  - hvs HAMAMELIS VIRGINIANA
  - ivs ILEX VERTICILLATA
  - vcs VACCINIUM CORYMBOSUM

**MILL BROOK ENHANCEMENT PLANT SCHEDULE**

KEY	QTY.	BOTANICAL NAME	COMMON NAME	SIZE	SPACING	NOTES:
<b>NATIVE SAPLING TREES</b>						
art	2	ACER RUBRUM	RED MAPLE	6' HT.	-	-
bnt	2	BETULA NIGRA	RIVER BIRCH	6' HT.	-	-
bpt	2	BETULA POPULIFOLIA	GRAY BIRCH	6' HT.	-	-
nst	2	NYSSA SYVATICA	TUPELO	6' HT.	-	-
<b>NATIVE SHRUBS</b>						
cls	6	CLETHRA ALNIFOLIA	SWEET PEPPERBUSH	3' HT.	4'-0" O.C.	-
cas	6	CORNUS AMOMUM	SILKY DOGWOOD	3' HT.	4'-0" O.C.	-
hvs	6	HAMAMELIS VIRGINIANA	WITCHHAZEL	3' HT.	4'-0" O.C.	-
ivs	6	ILEX VERTICILLATA	WINTERBERRY HOLLY	3' HT.	4'-0" O.C.	-
vcs	6	VACCINIUM CORYMBOSUM	HIGHBUSH BLUEBERRY	3' HT.	4'-0" O.C.	-

UNDERSTORY SEED MIX  
NEW ENGLAND ROADSIDE  
MATRIX UPLAND SEED MIX

UNDERSTORY SEED MIX  
NEW ENGLAND ROADSIDE  
MATRIX UPLAND SEED MIX

2	REVISION #2	02.17.2023
1	REVISION #1	01.23.2023

**kzla**  
Kylie Zick Landscape Architecture, Inc.  
36 Bronfield Street Suite 202  
Boston, MA 02108  
617 451-1018 Tel  
www.kyiezick.com

DRAFT CONSTRUCTION  
DOCUMENT SET

Job Number:  
Project: ARLINGTON RES.  
Drawn By: YL Checked By: KZ  
Date: SEPTEMBER 8, 2022  
Scale: 1"=20'-0"  
Drawing Title:

PLANTING PLAN

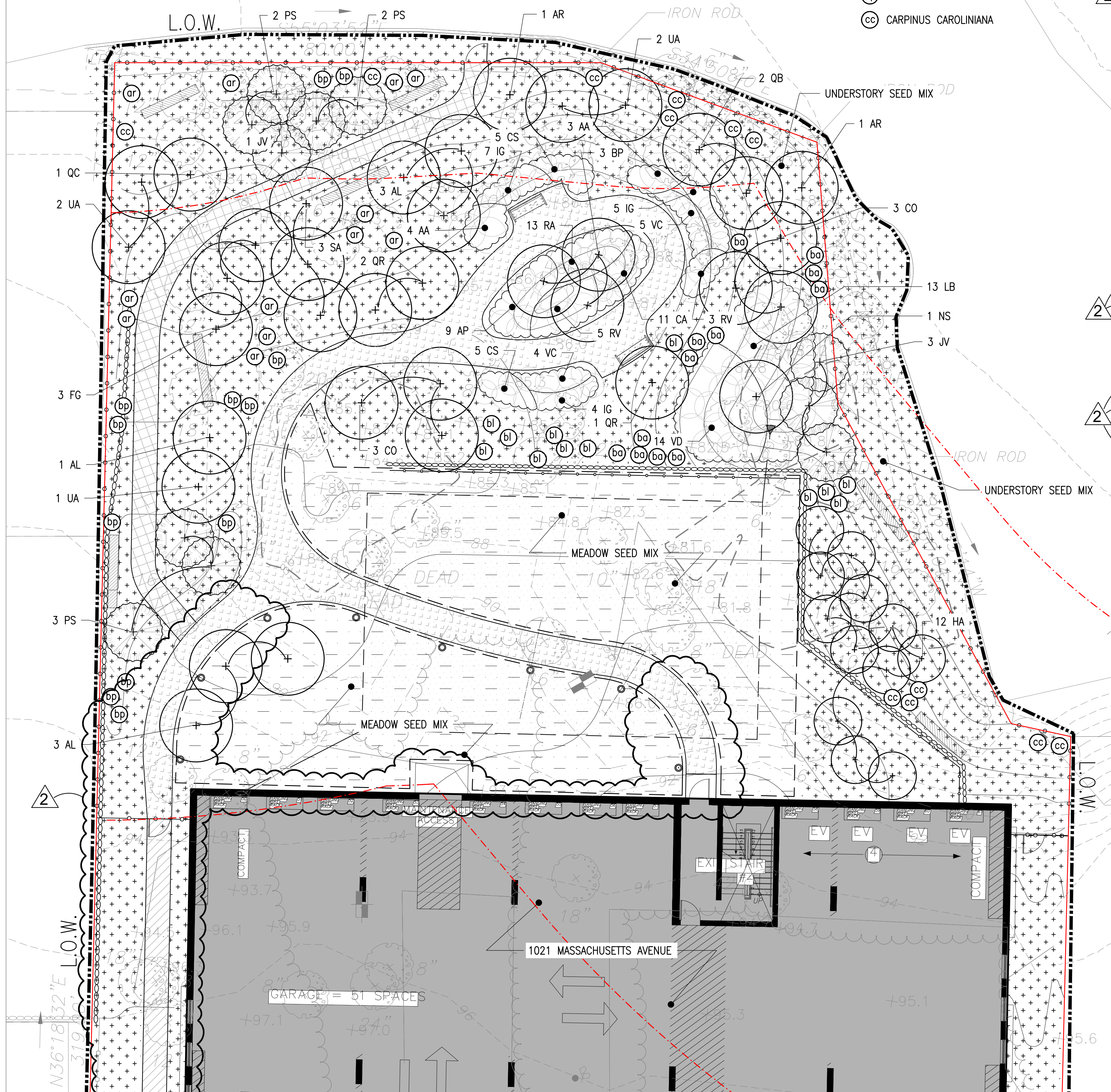


LEGEND

- L.O.W. LIMIT OF WORK LINE
- SHRUBS/PERENNIALS
- DECIDUOUS TREE, TYP.
- EVERGREEN TREE, TYP.
- MEADOW SEED MIX
- NEW ENGLAND SHOWY WILDFLOWER MIX
- UNDERSTORY SEED MIX
- NEW ENGLAND ROADSIDE MATRIX UPLAND SEED MIX

TREE SEEDLINGS

- AR ACER RUBRUM
- BA BETULA ALLEGANIENSIS
- BL BETULA LENTA
- BP BETULA POPULIFOLIA
- CC CARPINUS CAROLINIANA



PLANT SCHEDULE

KEY	QTY.	BOTANICAL NAME	COMMON NAME	SIZE	SPACING	NOTES:
<b>DECIDUOUS TREES</b>						
AR	2	ACER RUBRUM	RED MAPLE	2" CAL.	-	SPRING DIG ONLY
AL	7	AMELANCHIER CANADENSIS L. MEDIK.	SHADBLOW SERVICEBERRY	12" HT.	-	MULTI-STEM
BP	3	BETULA PAPIRIFERA	PAPER BIRCH	12" HT.	-	MULTI-STEM
CO	6	CARYA OVATA	SHAGBARK HICKORY	1" CAL.	-	
FG	3	FAGUS GRANDIFLORA	AMERICAN BEECH	1" CAL.	-	SPRING DIG ONLY
GB	6	GINKGO BILOBA 'PRINCETON SENTRY'	PRINCETON SENTRY GINKGO	3" CAL.	-	
HA	12	HAMAMELIS X INTERMEDIA 'ARNOLD PROMISE'	WITCHHAZEL	8" B&B	-	CLUMP FORM
NS	1	NYSSA SYLVATICA	SOURGUM	2" CAL.	-	SPRING DIG ONLY
QB	2	QUERCUS BICOLOR	SWAMP WHITE OAK	2" CAL.	-	SPRING DIG ONLY
QC	1	QUERCUS COCCINEA	SCARLET OAK	2" CAL.	-	SPRING DIG ONLY
QR	3	QUERCUS RUBRA	RED OAK	2" CAL.	-	SPRING DIG ONLY
SA	3	SASSAFRAS ALBIDUM	SASSAFRAS	1" CAL.	-	
UA	5	ULMUS AMERICANA 'PRINCETON'	PRINCETON AMERICAN ELM	2" CAL.	-	SPRING DIG ONLY
<b>TREE SEEDLINGS</b>						
ar	12	ACER RUBRUM	RED MAPLE	4" HT.	-	
ba	12	BETULA ALLEGANIENSIS	YELLOW BIRCH	4" HT.	-	
bl	12	BETULA LENTA	SWEET BIRCH	4" HT.	-	
bp	12	BETULA POPULIFOLIA	GRAY BIRCH	4" HT.	-	
cc	12	CARPINUS CAROLINIANA	AMERICAN HORNBEAM	4" HT.	-	
<b>EVERGREEN TREES</b>						
JV	4	JUNIPERUS VIRGINIANA	EASTERN RED CEDAR	6" HT.	-	
PS	7	PINUS STROBUS	EASTERN WHITE PINE	6" HT.	-	
<b>SHRUBS</b>						
AA	7	ARONIA ARBUTIFOLIA	RED CHOKEBERRY	36" HT.	5'-0" O.C.	
AP	9	AESCLUS PARVIFLORA	BOTTLEBRUSH BUCKEYE	36" HT.	4'-0" O.C.	
CA	11	CLETHRA ALNIFOLIA	SUMMERSWEET	24" HT.	3'-0" O.C.	
CAK	68	CALAMAGROSTIS X ACUTIFLORA 'KAL FOERSTEER'	FEATHER REED GRASS	24" HT.	1'-6" O.C.	
CS	10	CORNUS SERICEA	REDTWIG DOGWOOD	36" HT.	4'-0" O.C.	
HS	8	HIBISCUS SYRIACUS	LIL' KIM ROSE OF SHARON	36" HT.	4'-0" O.C.	
IG	16	ILEX GLABRA	INKBERRY	3 GAL.	4'-0" O.C.	
IGS	8	ILEX GLABRA 'SHAMROCK'	SHAMROCK INKBERRY	3 GAL.	4'-0" O.C.	
LB	13	LINDERA BENZOIN	SPICEBUSH	36" HT.	6'-0" O.C.	
RA	13	RHUS AROMATICA 'GRO-LOW'	GRO-LOW FRAGRANT SUMAC	24" SPREAD	3'-0" O.C.	
RK	11	ROSA 'KNOCK OUT'	WHITE KNOCK OUT ROSE	24" HT.	4'-0" O.C.	
RV	8	ROSA VIRGINIANA	VIRGINIA ROSE	36" HT.	5'-0" O.C.	
SM	13	SYRINGA MEYERI 'PALIBIN'	DWARF KOREAN LILAC	36" HT.	4'-0" O.C.	
TM	30	TAXUS X MEDIA 'HICKSII'	HICKS YEW	36" HT.	4'-0" O.C.	
VC	9	VACCINIUM CORYMBOSUM	HIGHBUSH BLUEBERRY	24" HT.	4'-0" O.C.	
VD	14	VIBURNUM DENTATUM	ARROWWOOD	36" HT.	5'-0" O.C.	
<b>GRASS</b>						
LM	225	LIRIOPE MUSCARI	BIG BLUE LILYTURF	PLUGS	8" O.C.	

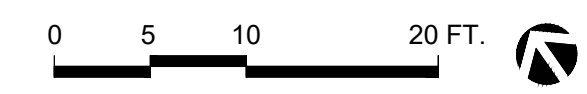
2	REVISION #2	02.17.2023
1	REVISION #1	01.23.2023
NO.	REVISION	DATE

**kzla**  
Kylie Zick Landscape Architecture, Inc.  
36 Bronnfield Street Suite 202  
Boston, MA 02108  
617 451-1018 Tel  
www.kyiezick.com

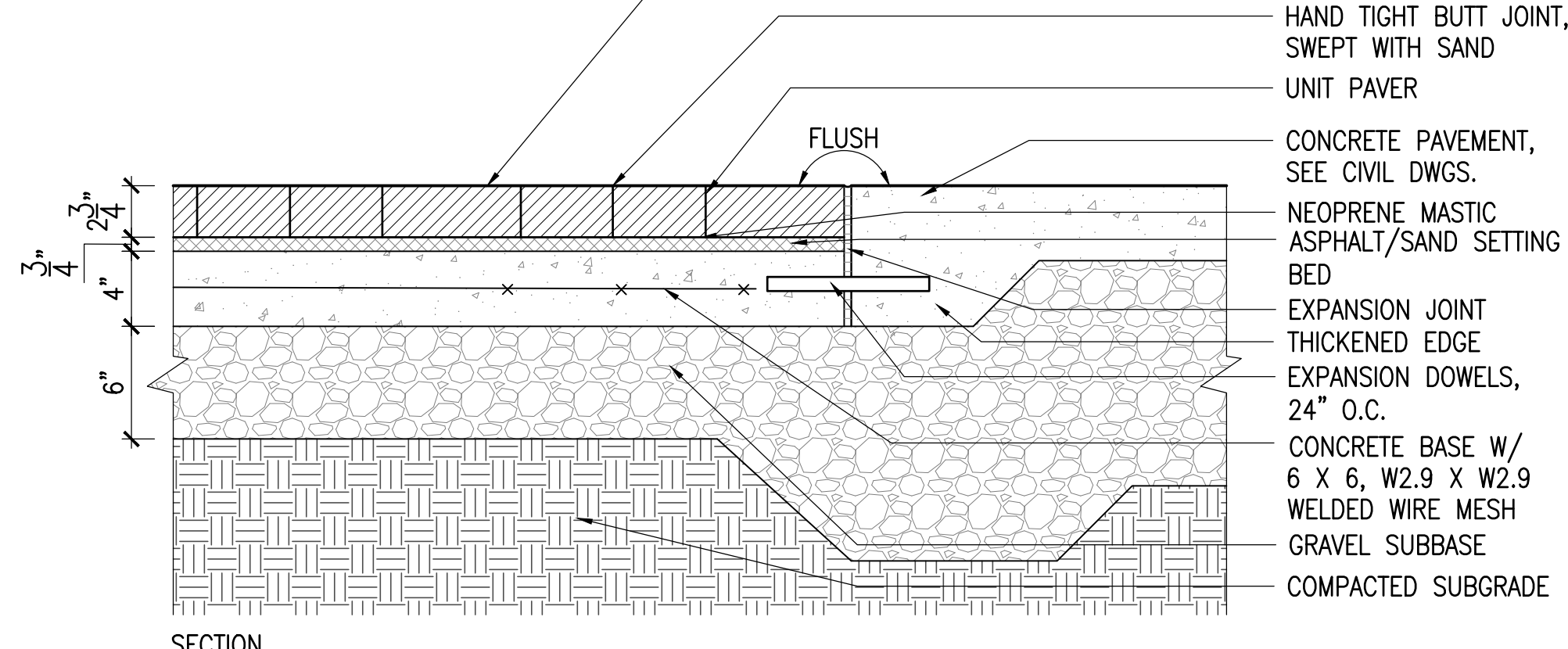
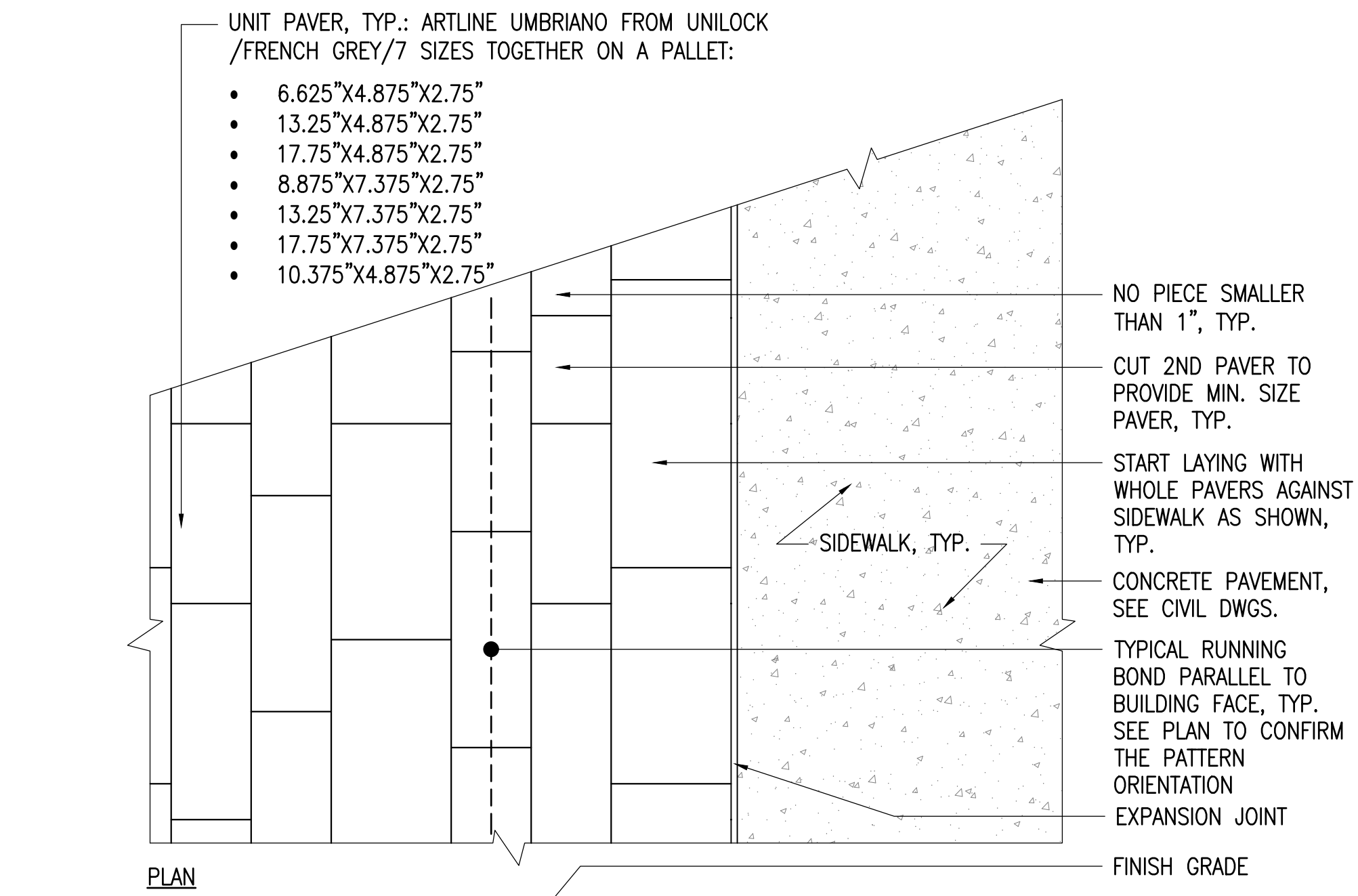
DRAFT CONSTRUCTION  
DOCUMENT SET

Job Number:  
Project: ARLINGTON RES.  
Drawn By: YL Checked By: KZ  
Date: SEPTEMBER 8, 2022  
Scale: 1"=10'-0"  
Drawing Title:

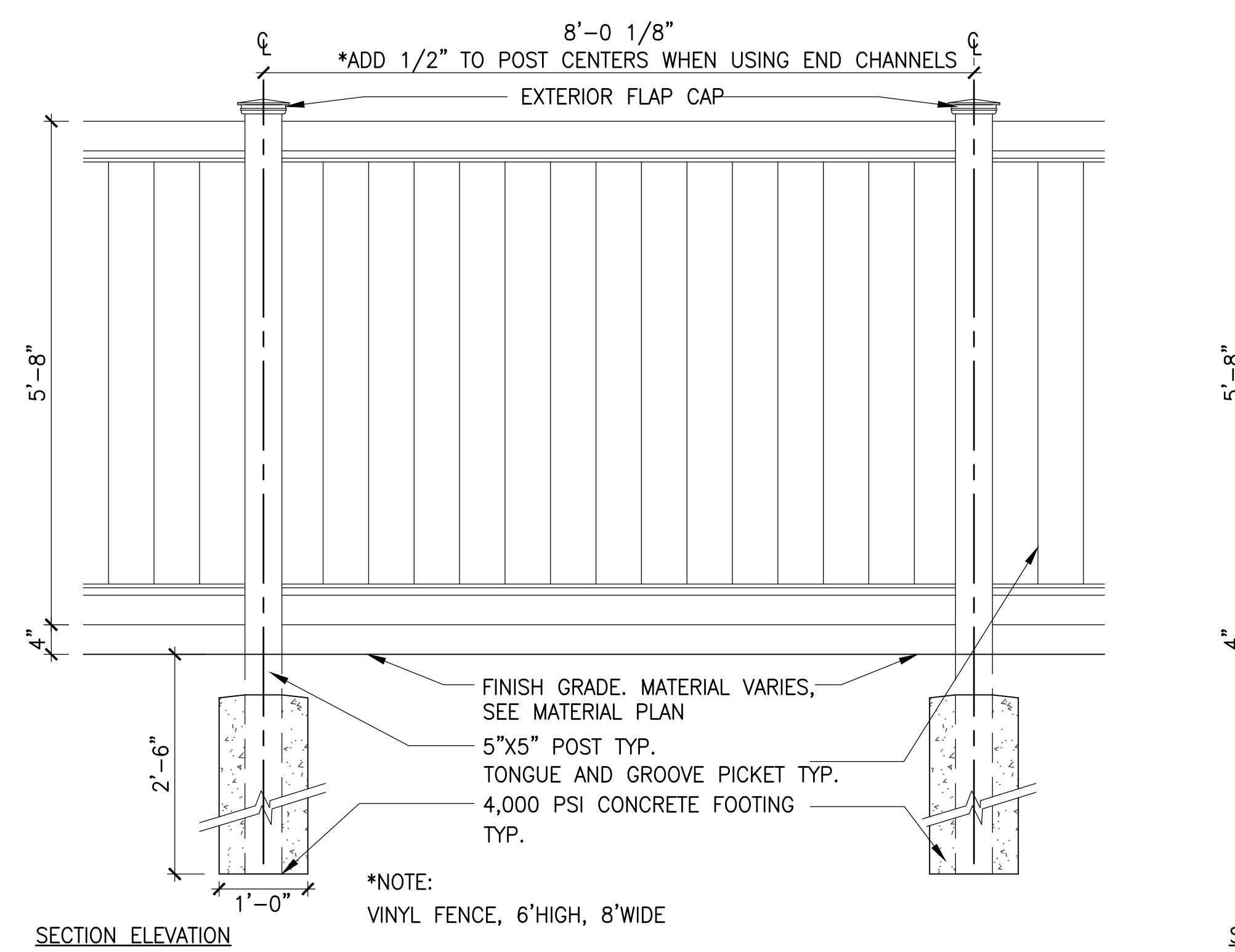
ENLARGED PLANTING PLAN



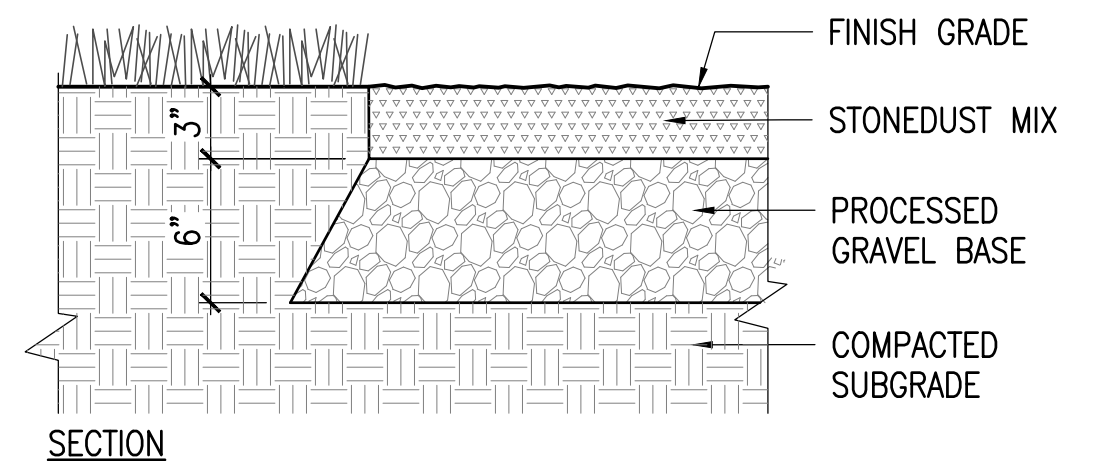




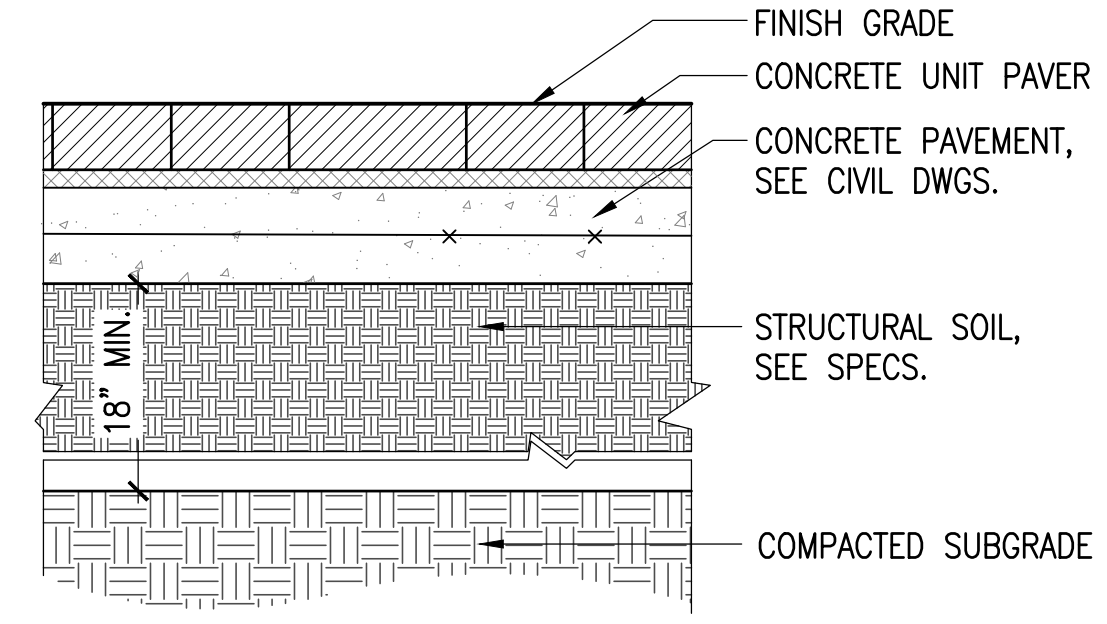
**1 CONCRETE UNIT PAVER**  
SCALE: 1-1/2"=1'-0"



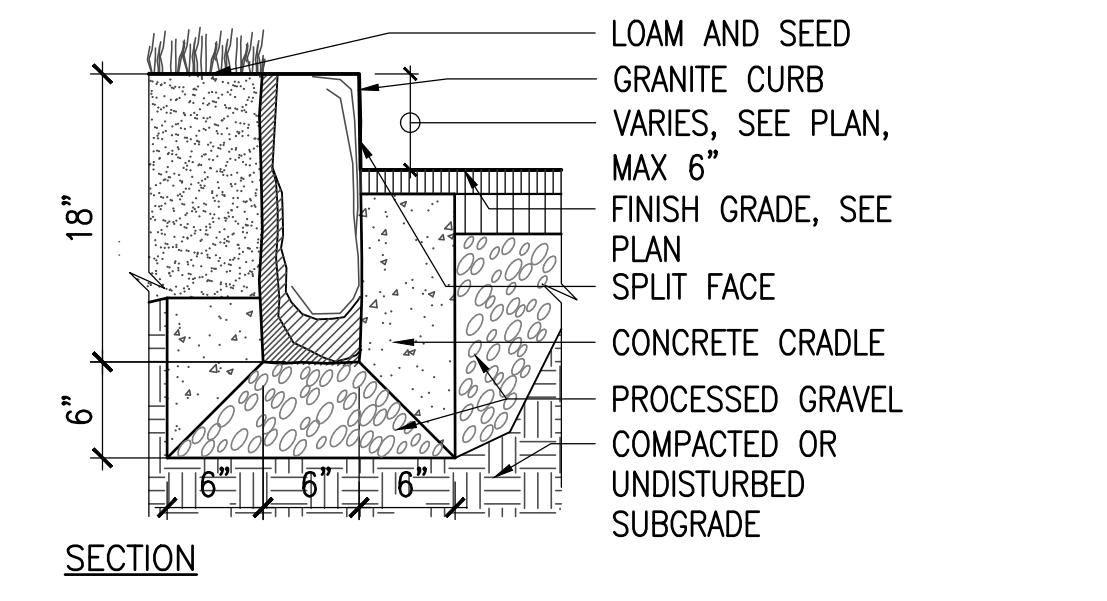
**2 6' HT. VINYL FENCE / GATE**  
SCALE: AS SHOWN



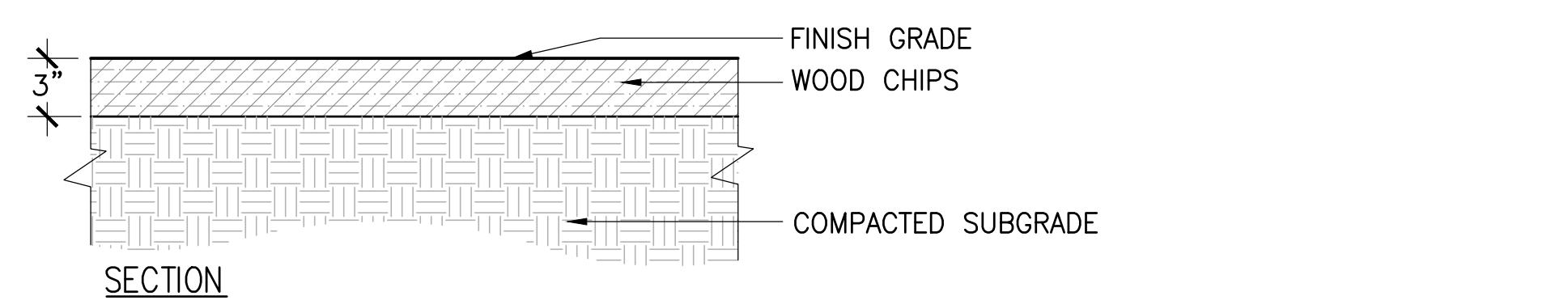
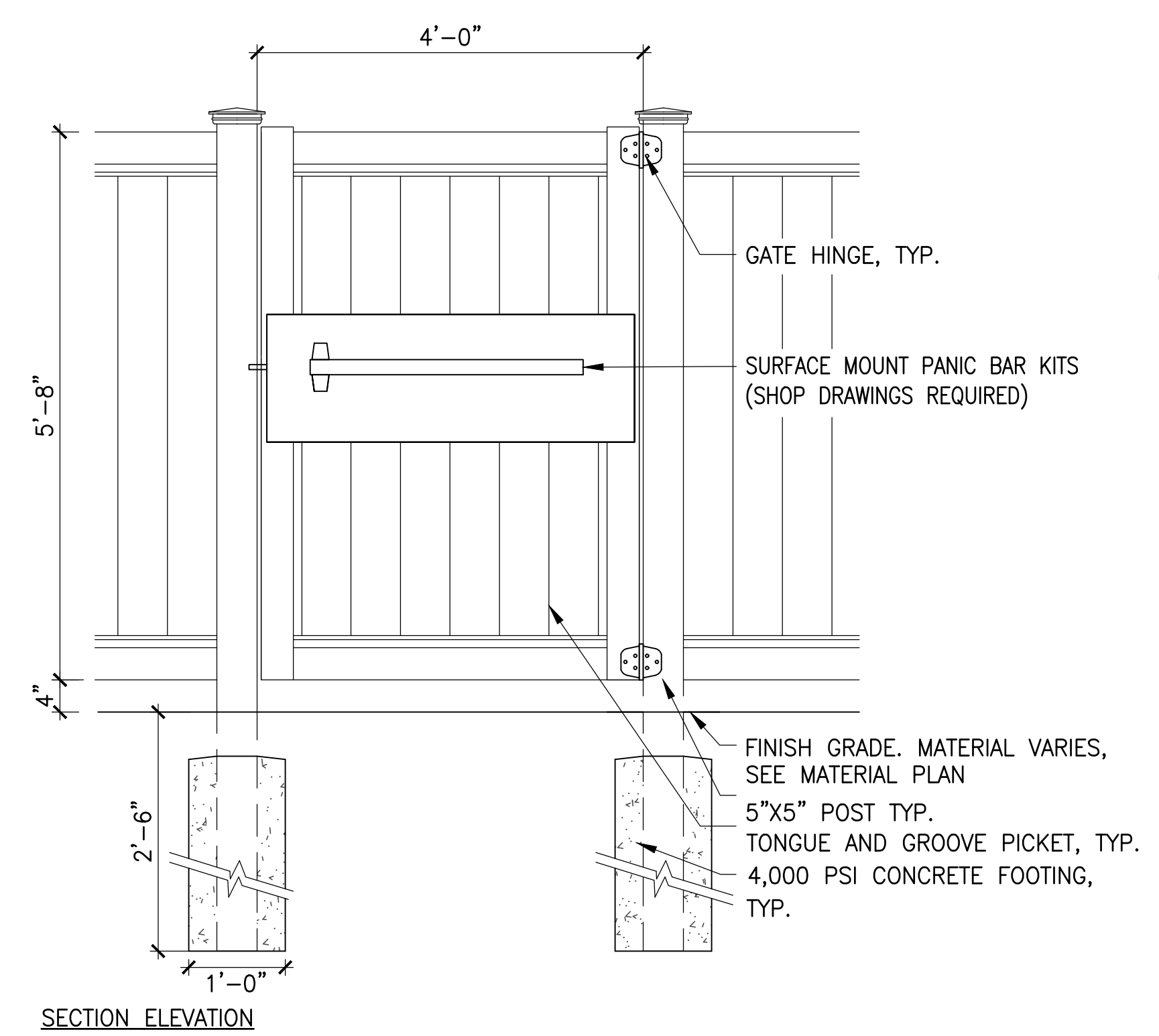
**3 STONEDUST PAVEMENT**  
SCALE: 1-1/2"=1'-0"



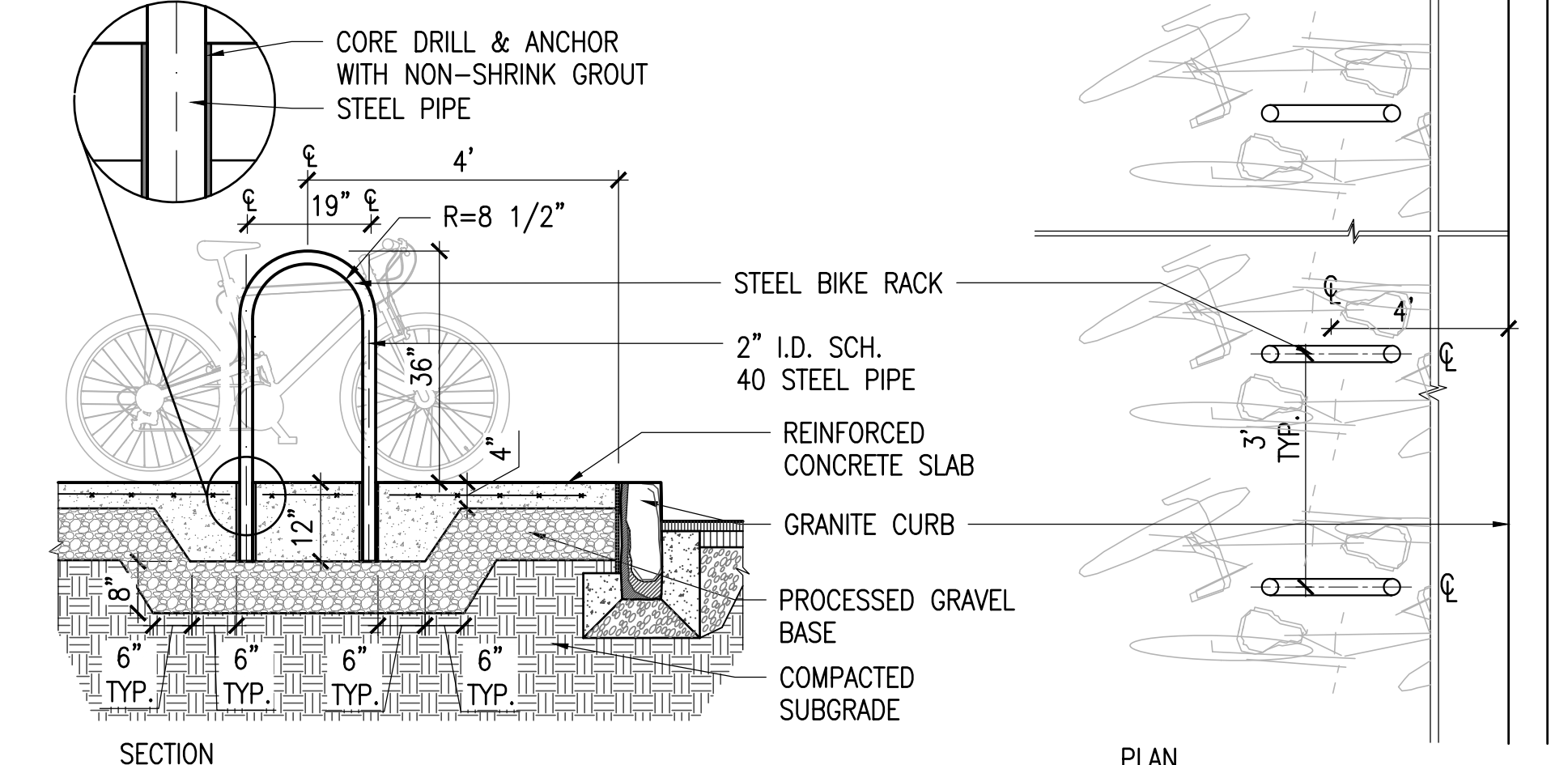
**4 STRUCTURAL SOIL**  
SCALE: 1-1/2"=1'-0"



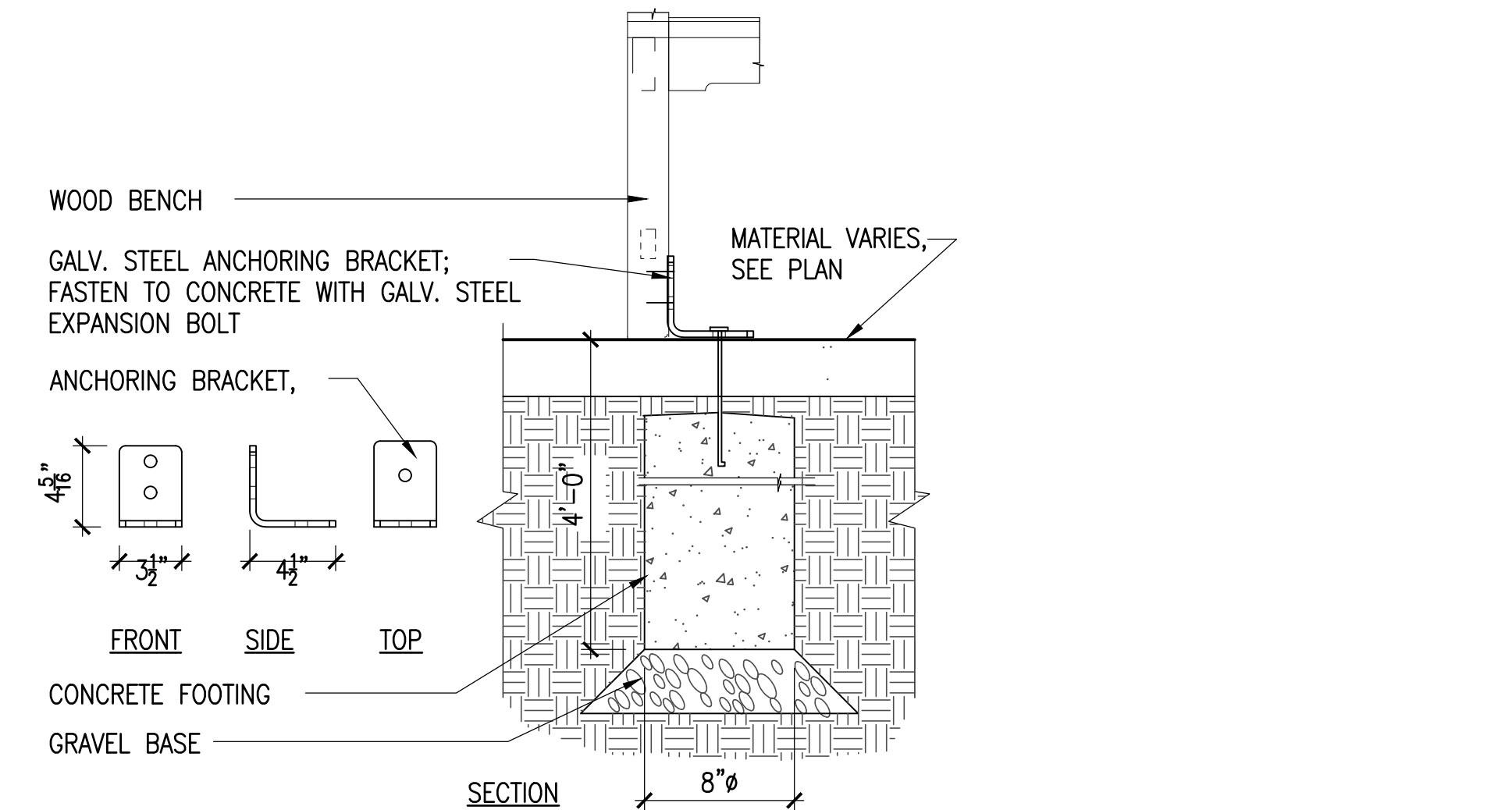
**5 GRANITE CURB**  
SCALE: 1"=1'-0"



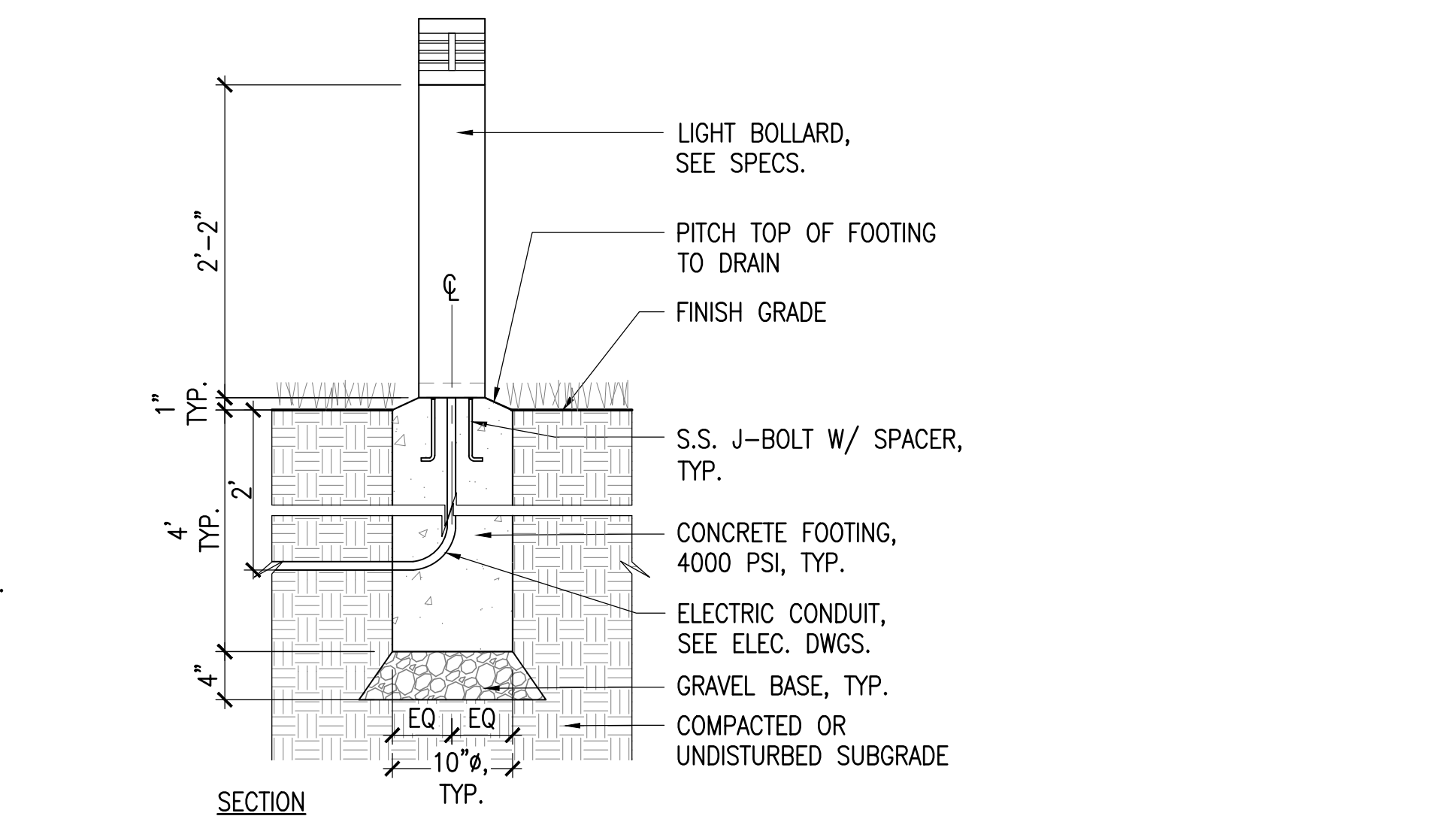
**6 WOOD CHIP EMERGENCY ACCESS PATH**  
SCALE: 1-1/2"=1'-0"



**7 BIKE RACK**  
SCALE: 1/2"=1'-0"



**8 WOOD BENCH ANCHORING**  
SCALE: 1-1/2"=1'-0"



**9 BOLLARD LIGHT FOOTING**  
SCALE: 1"=1'-0"

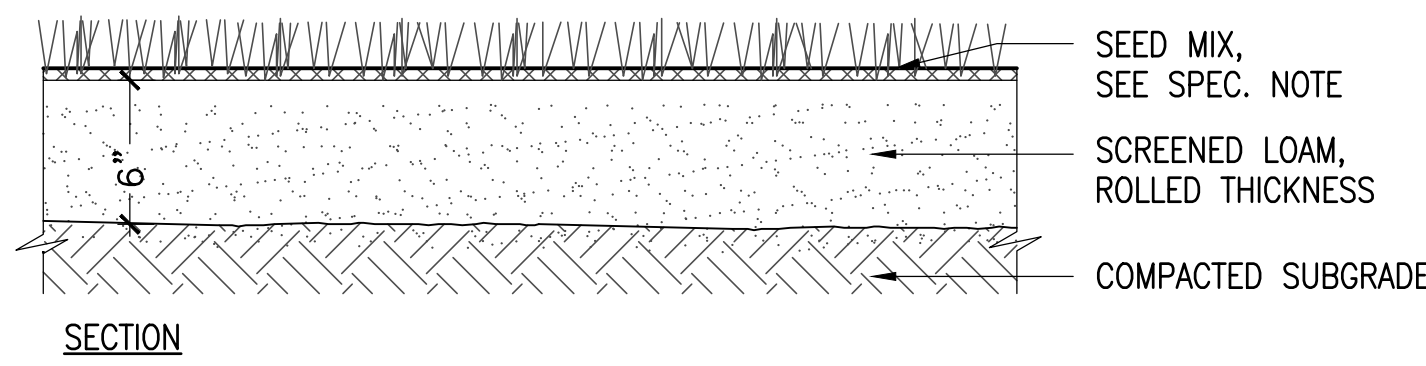
NO.	REVISION	DATE
2	REVISION #2	02.17.2023
1	REVISION #1	01.23.2023

**kzla**  
Kylie Zick Landscape Architecture, Inc.  
36 Bronnfield Street Suite 202  
Boston, MA 02108  
617.451.1018 Tel  
www.kyiezick.com

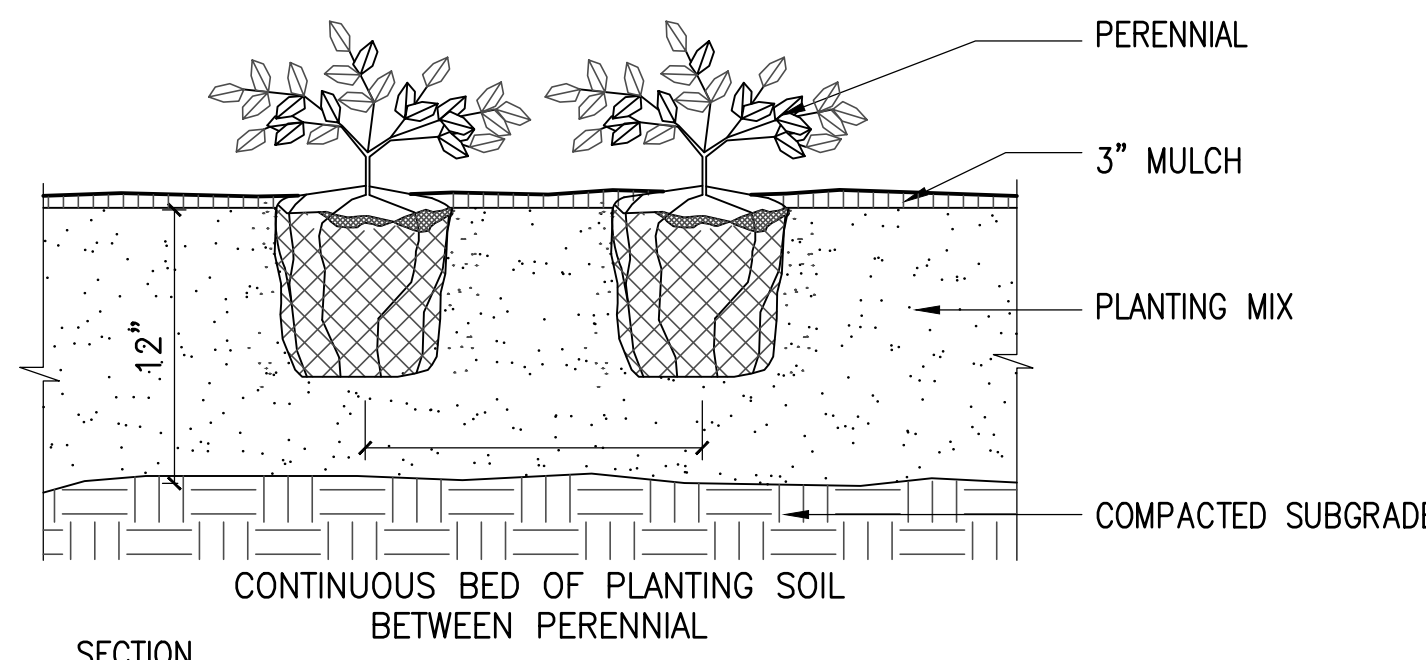
DRAFT CONSTRUCTION DOCUMENT SET

Job Number:  
Project: ARLINGTON RES.  
Drawn By: YL Checked By: KZ  
Date: SEPTEMBER 8, 2022  
Scale: 1"=20'-0"  
Drawing Title:

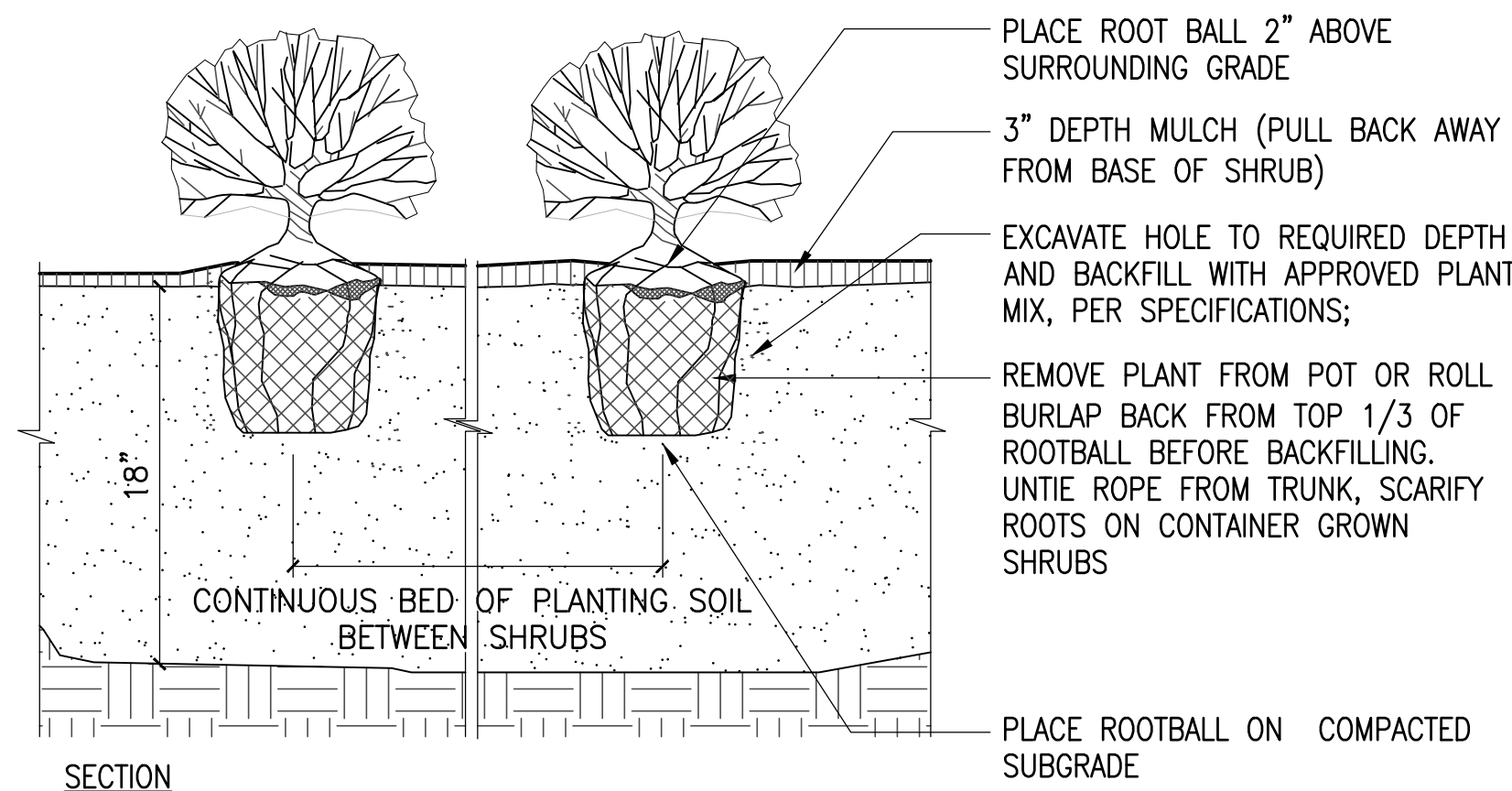
DETAILS



**1 LAWN**  
SCALE: 1'-1/2"=1'-0"



**2 PERENNIAL PLANTING**  
SCALE: 1 1/2"=1'-0"



**3 SHRUB PLANTING**  
SCALE: 1 1/2"=1'-0"

**NOTES**

1. IF CONTAINER GROWN, SCARIFY SOIL AND ROOTS TO REMOVE CIRCLING ROOTS.

(2) 8' LONG, 3" FIR STAKES; SET STAKES OUTSIDE OF ROOTBALL, LEVEL AND WITH 5'-6" VISIBLE ABOVE GROUND

(2) PIECES OF "ARBOR TIES" SHALL BE LOOPED AROUND TREE TRUNK THROUGH ONE ANOTHER, TWISTED AND SECURED TO STAKE

INSTALL TREE PLUMB

TOP OF ROOTBALL SHALL BEAR SAME RELATIONSHIP TO FINISHED GRADE AS TO PREVIOUS EXISTING GRADE

ROOT FLARE SHALL BE EXPOSED; MULCH SHOULD NOT TOUCH TREE TRUNK

PLACE BALL ON SUBSOIL. REMOVE AND DISCARD BURLAP EXCEPT UNDER BALL. REMOVE AND DISCARD ALL SYNTHETIC SOIL WRAPPING MATERIALS (TREATED BURLAP, NYLON TWINE, WIRE BASKETS, ETC.)

(2) WATERING BAGS AT STAKES  
3" BARK MULCH

DECOMPACTED SUBGRADE

EXCAVATE HOLE TO DIAMETER 3X WIDER THAN ROOTBALL. BACKFILL HOLE WITH PLANTING SOIL MIX

SLOW RELEASE FERTILIZER

EXCAVATE SUBSOIL AS REQUIRED TO PLACE ROOTBALL TO PROPER ELEVATION. PLACE ROOTBALL DIRECTLY ON COMPACTED OR UNDISTURBED SUBSOIL.

SECTION ELEVATION

**4 DECIDUOUS TREE PLANTING**  
SCALE: N.T.S.

(3) 2"x3"x4' FIR POST; ATTACH GALVANIZED MALLEABLE STEEL CABLE TO POST AND SECURE BY TWISTING TAUTLY; SET ANGLE OF POST & GUY TO ENTER GROUND AT THE LIMIT OF THE SPREAD OF THE BOTTOM BRANCHES; STAKES SHALL BE OUTSIDE OF TREE PIT.

INSTALL 3 GUYS PER TREE EQUALLY SPACED AROUND ROOTBALL. ATTACH 13 GAUGE GALV. MALLEABLE STEEL GUY WIRE 2/3 HEIGHT OF TREE IN REINFORCED RUBBER HOSE; WITH CABLE CLAMPS. SECURE BY TWISTING TAUTLY.

TREE SHALL BE PLANTED WITH TOP OF ROOTBALL BEARING THE SAME RELATIONSHIP TO FINISHED GRADE AS TO PREVIOUS EXISTING GRADE. TREE SHALL BE PLUMB AFTER SETTLEMENT.

3" BARK MULCH (HOLD MULCH OFF ROOT FLARE)

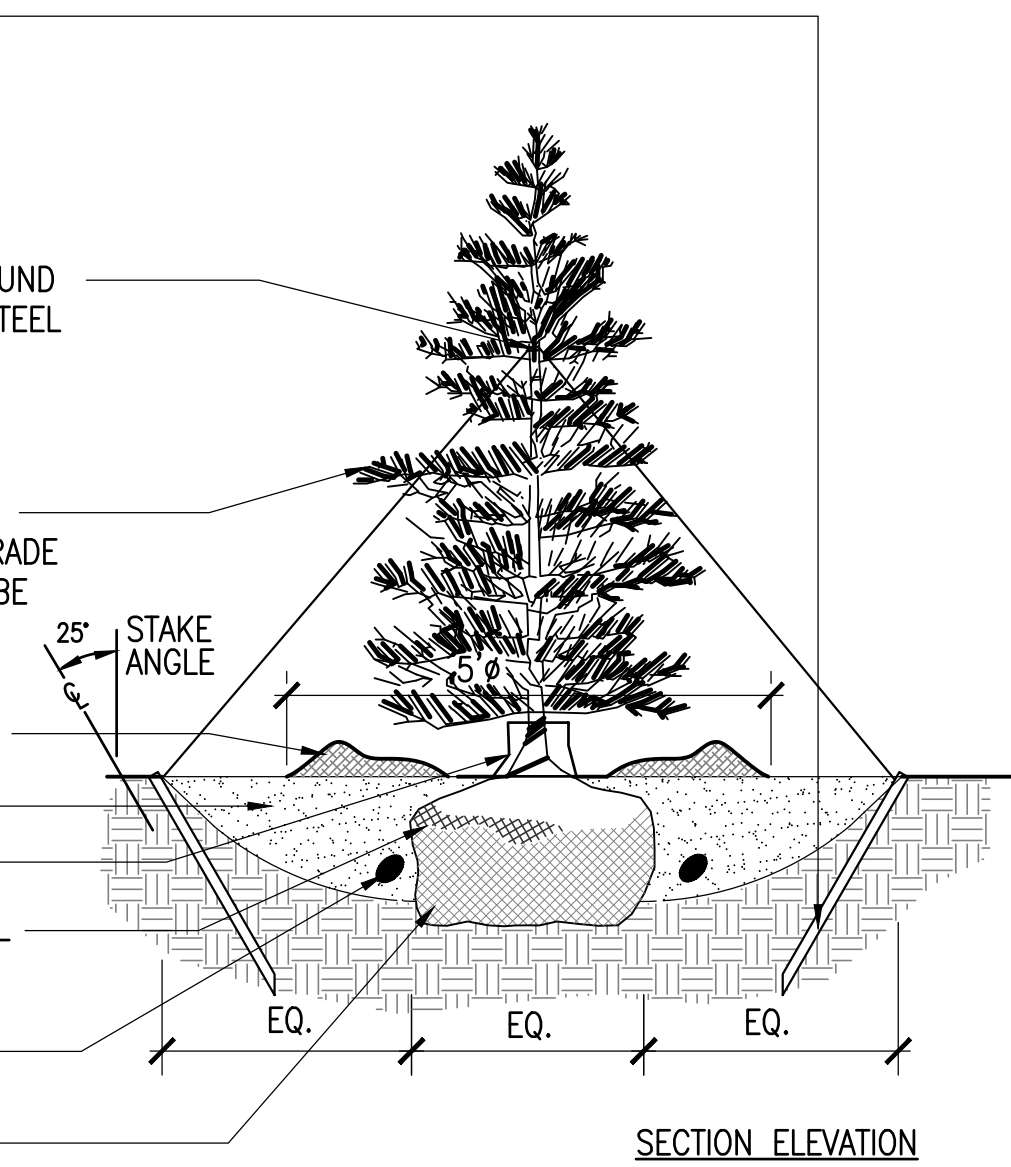
PLANTING SOIL MIX

WATER BAG

ROLL BURLAP BACK FROM TOP 1/3 OF ROOTBALL BEFORE BACKFILLING. UNTIE ROPE FROM TRUNK.

SLOW RELEASE FERTILIZER

FREE DRAINING, UNDISTURBED OR COMPACTED SUBGRADE



**5 EVERGREEN TREE PLANTING**  
SCALE: N.T.S.

**NOTES**

1. ADD HIGH VISIBILITY FLAGGING TO EACH GUY WIRE FOR PUBLIC SAFETY.

INSTALL 3 GUYS PER TREE EQUALLY SPACED AROUND ROOTBALL. ATTACH 13 GAUGE GALV. MALLEABLE STEEL GUY WIRE 2/3 HEIGHT OF TREE IN REINFORCED RUBBER HOSE; WITH CABLE CLAMPS. SECURE BY TWISTING TAUTLY.

(3) 2"x3"x4' FIR POST; ATTACH GALVANIZED MALLEABLE STEEL CABLE TO POST AND SECURE BY TWISTING TAUTLY; SET ANGLE OF POST & GUY TO ENTER GROUND AT THE LIMIT OF THE SPREAD OF THE BOTTOM BRANCHES; STAKES SHALL BE OUTSIDE OF TREE PIT.

DECIDUOUS TREE W/ (2) STAKES (4/17)

EROSION MATTING AS SPECIFIED

WATERING BAG

TREE SHALL BE PLANTED 3" ABOVE SURROUNDING GRADE. TREE SHALL BE PLUMB AFTER SETTLEMENT.

3" MULCH; PULL MULCH AWAY FROM TREE TRUNK

3" HIGH EARTH SAUCER AROUND TREE PIT

PLANTING LOAM AS SPECIFIED

EROSION CONTROL MATTING AS SPECIFIED

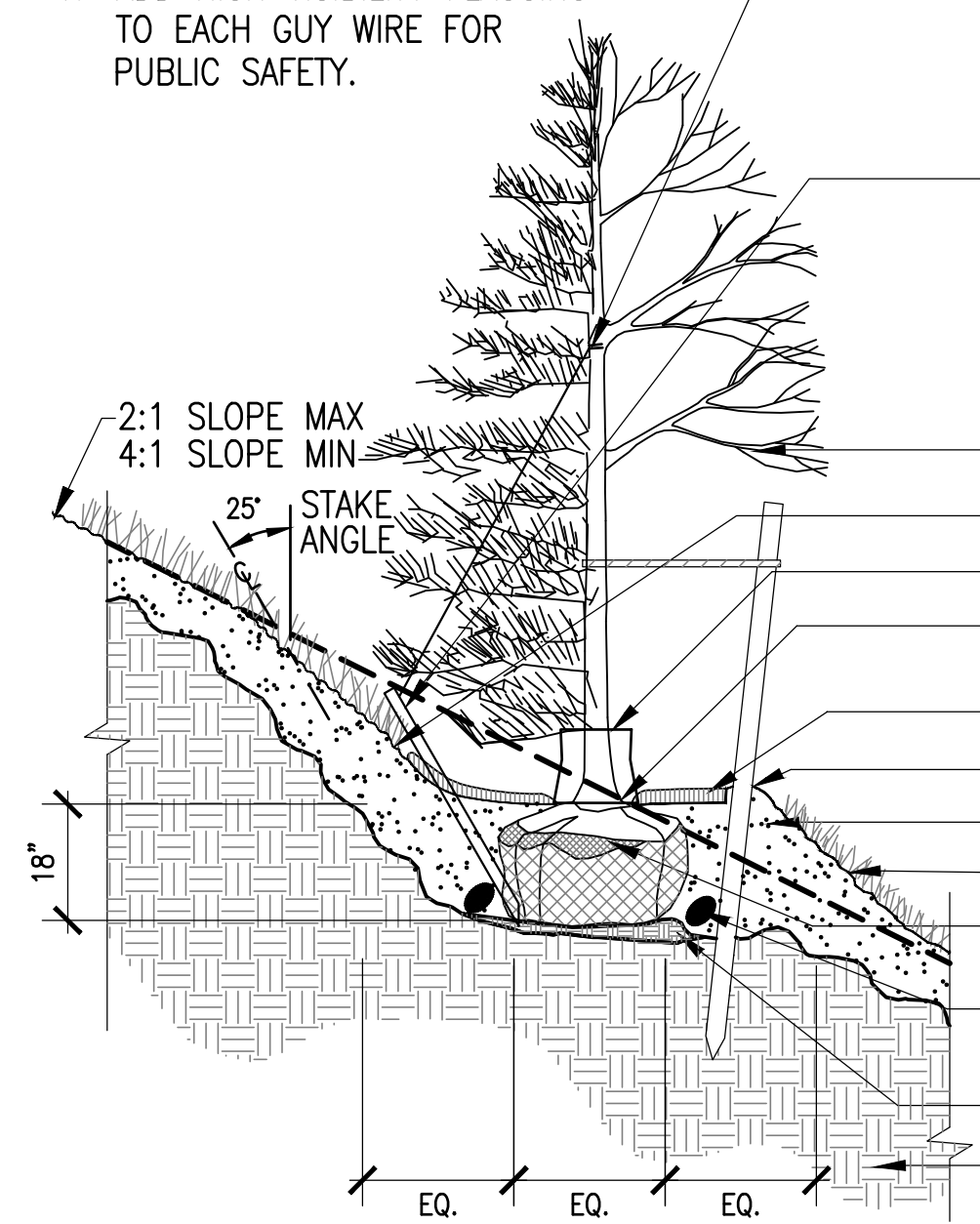
ROLL BURLAP BACK FROM TOP 1/3 OF ROOTBALL BEFORE BACKFILLING. REMOVE ROPE FROM TRUNK.

SLOW RELEASE FERTILIZER

COMPACTED SUBGRADE BENCH UNDER TREE

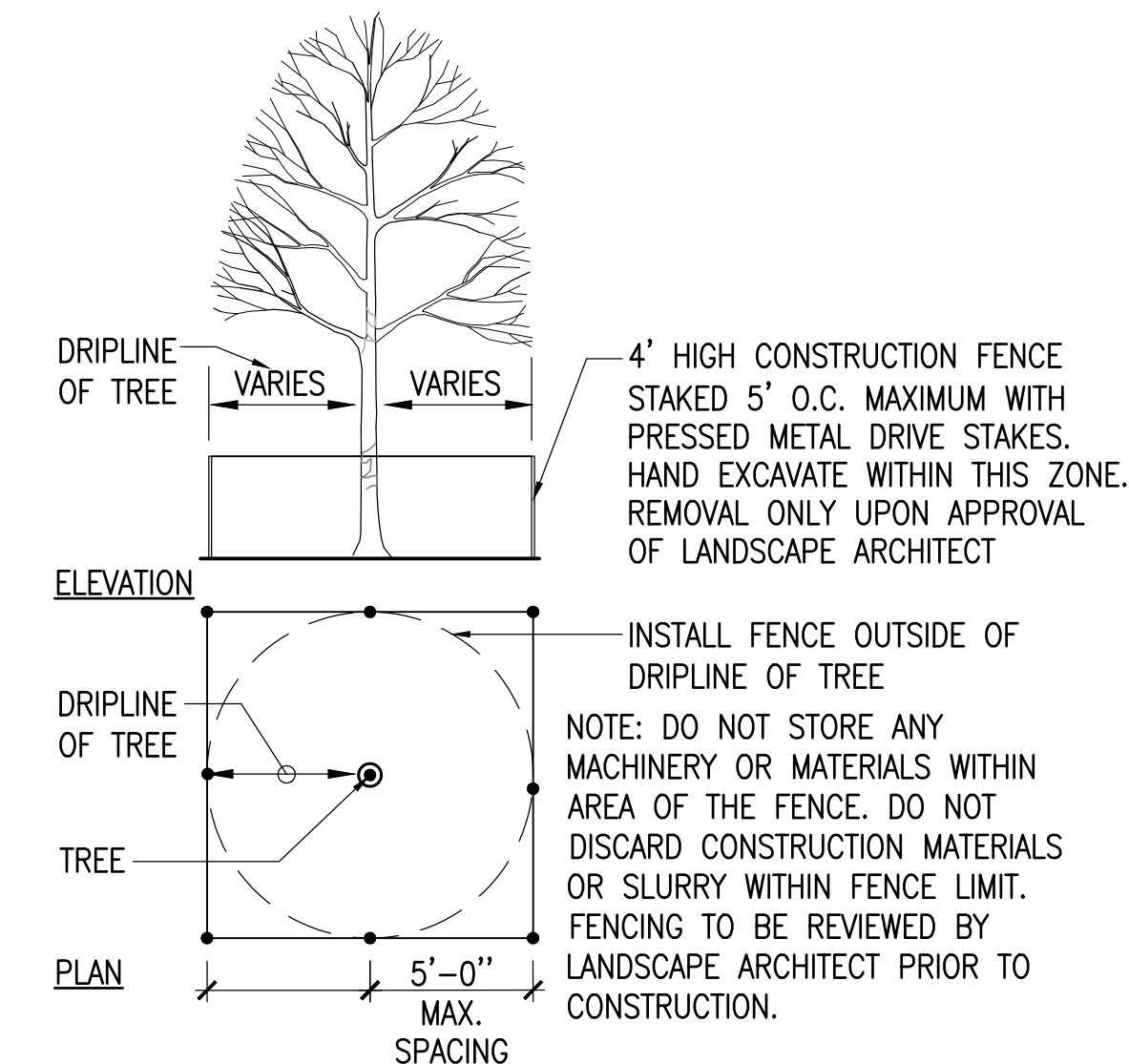
UNDISTURBED SUBGRADE OR COMPACTED BACKFILL.

ROUGH GRADE TO REMAIN ON SLOPE.



SECTION ELEVATION

**6 TREE PLANTING ON SLOPE**  
SCALE: N.T.S.



**7 TREE PROTECTION - FENCE**  
SCALE: N.T.S.

2	REVISION #2	02.17.2023
1	REVISION #1	01.23.2023

NO.	REVISION	DATE
2	REVISION #2	02.17.2023
1	REVISION #1	01.23.2023

**kzla**

Kyle Zick Landscape Architecture, Inc.

36 Bronnfield Street Suite 202 617 451-1018 Tel

Boston, MA 02108 www.kyiezick.com

DRAFT CONSTRUCTION DOCUMENT SET

Job Number:

Project: ARLINGTON RES.

Drawn By: YL

Checked By: KZ

Date: SEPTEMBER 8, 2022

Scale: 1"=20'-0"

Drawing Title:

DETAILS