

*Robbins Farm Park
Playground Renovation*

Public Workshop #3

March 16, 2023

Workshop Agenda

1. Grounding the Process

Schedule + Goals

2. What We've Heard

3. Design Development

Character Inspiration

Overall Vision

Playground Tour

4. Discussion / Feedback

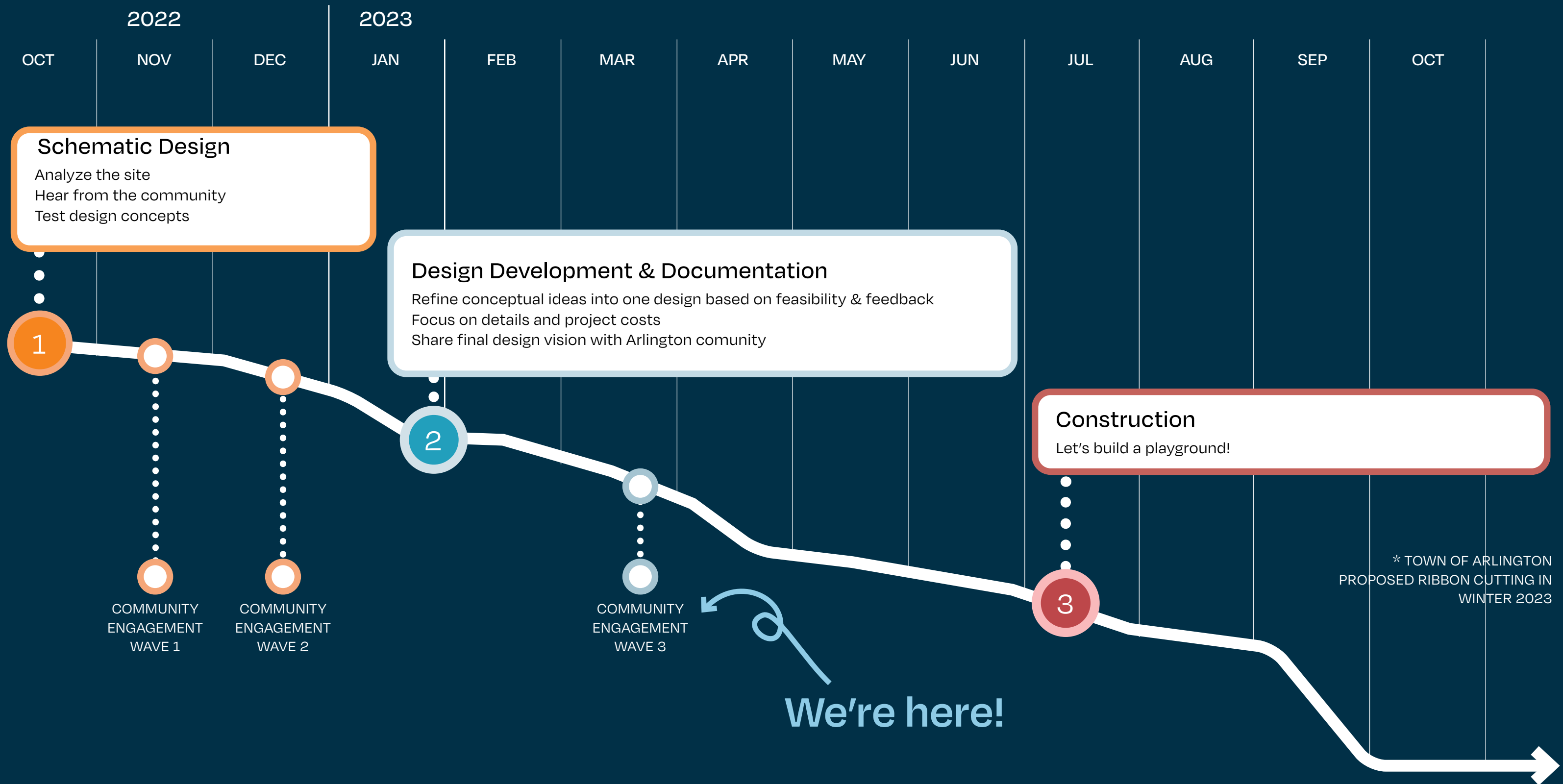
Goals Today

- **Share a vision for Robbins based on the feedback we heard in December!**
- **Discuss emerging details**
- **Get feedback on play value and equipment**

Our Project Boundary



Our Schedule + Process



A welcoming place for people of all ages, backgrounds, and abilities to play together

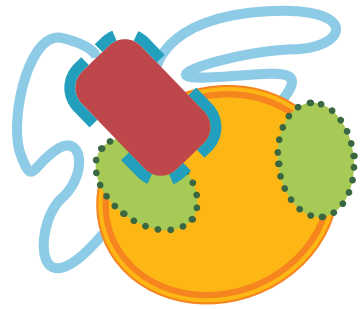
A landscape that invites exploration and movement in a variety of exciting ways

PROJECT GOAL

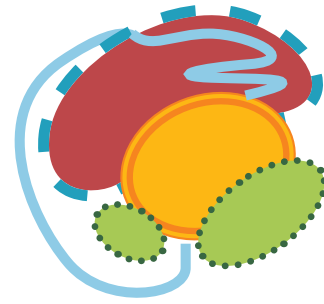
To create an inclusive adventure playscape nestled into a beloved community park.

Reflective of the unique character, culture, and history of both Arlington and Robbins Farm

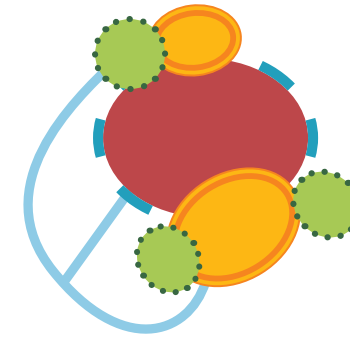
A Recap of the 3 Concepts Shared in December...



Great Foundations
for Farm Play



Chutes, Ladders,
and Veggies



Amplifying
Skyline Park



Community Consensus: Playground Equipment

Offer a variety of sliding experiences



Preference for multi-level towers as a way to provide challenge AND inclusion



• Nature and farm play resonates with Robbins character!



Challenging elements for older kids



Community Consensus: Circulation + Inclusion

Wide paths for multiple people to inhabit together

Provide one unified ADA route

Embed multi-sensory play into the hillside

Inclusive access to bottom, middle, and top play features



Community Consensus: Caregiver Concerns

Space for private/party use to coexist with informal use



Ensure sufficient views of the playground

Moments to pause along hillside path



Create a variety of spaces for caregivers to sit



How have you been tracking this project??

- A. I've been to both public meetings!
- B. I attended one public meeting.
- B. I saw materials online.
- C. I'm brand new to the project.
- D. Other: _____

Please Share your response in the chat!

Character and Form Inspiration



Farm
Fields + Paths

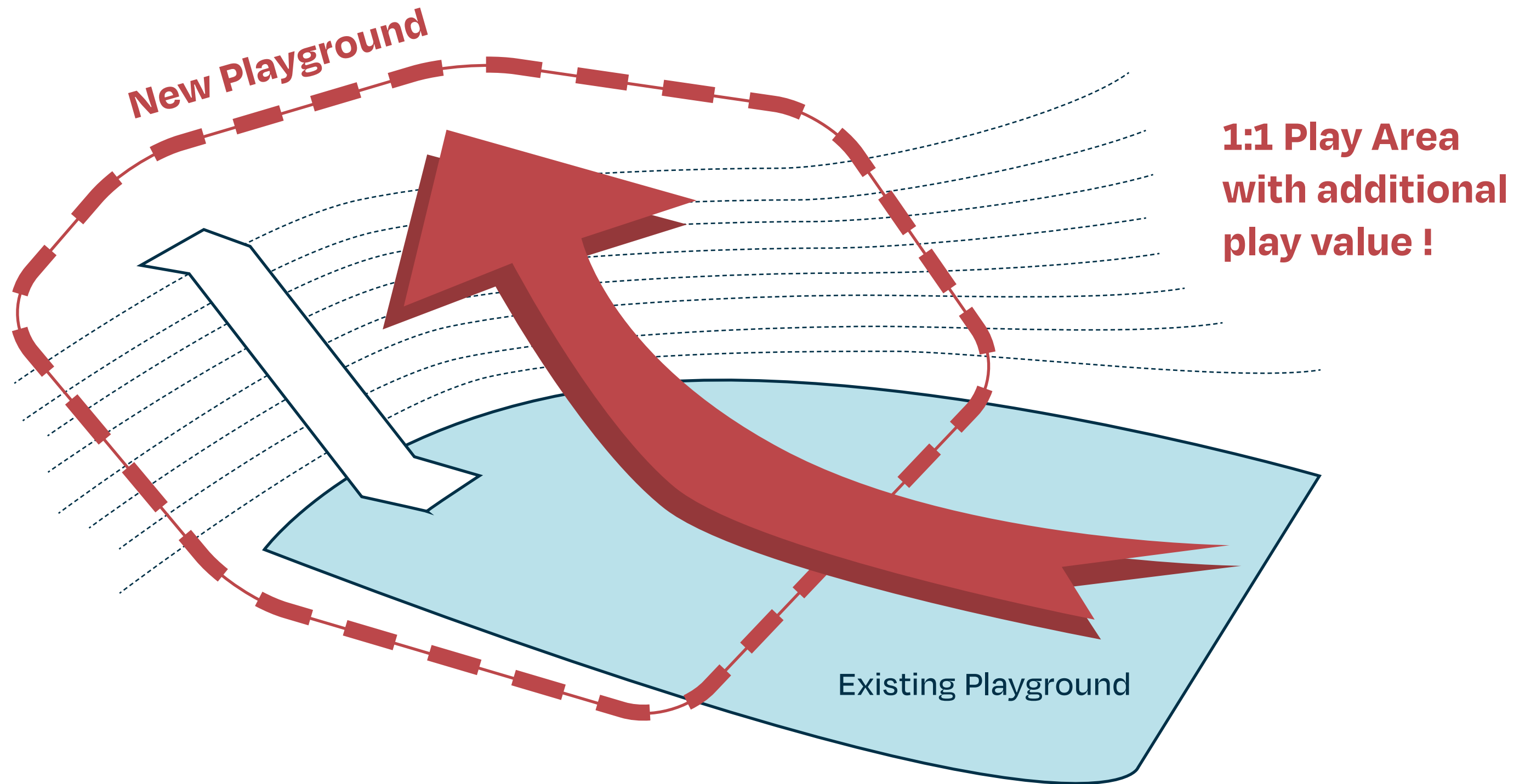


Vernacular
Sheds + Skyline

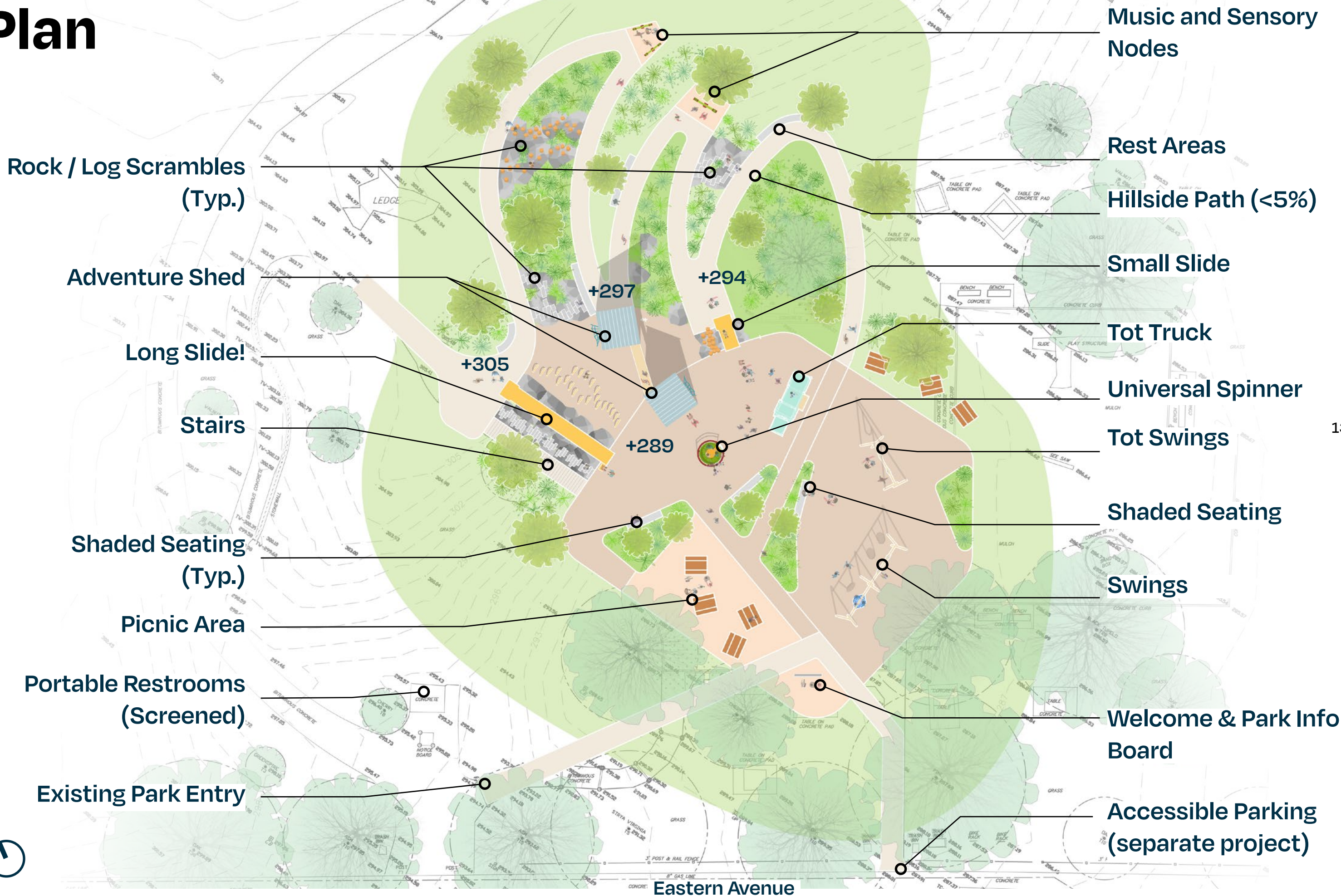


Landscape
Stone + Patch

A Shift to Capture the Slope!



Plan



Rock / Log Scrambles
(Typ.)

Adventure Shed

Long Slide!

Stairs

Shaded Seating
(Typ.)

Picnic Area

Portable Restrooms
(Screened)

Existing Park Entry

Music and Sensory
Nodes

Rest Areas

Hillside Path (<5%)

Small Slide

Tot Truck

Universal Spinner

Tot Swings

Shaded Seating

Swings

Welcome & Park Info
Board

Accessible Parking
(separate project)



Eastern Avenue

An Inclusive Adventure Playscape Nestled Into a Beloved Community Park



An Inclusive Adventure Playscape Nestled Into a Beloved Community Park

**About what aspect of the
playground are you most
excited to learn more?**

Let us know in the chat!

Let's take a walk with a few play experts!

What does Robbins Farm Park Playground look and feel like through the lenses of these four play experts?



Neurodivergent Preschooler

- 5 years old
- On the autism spectrum
- Requires personal time and self-guided exploration
- Enjoys music and sensory exploration!



Able-Bodied Child

- 10 years old
- Looking for challenging and adventurous play equipment
- Independent and plays social tag-type games
- Moves fast and enjoys climbing structures!



Wheelchair-Using Child

- 8 years old
- Uses a wheelchair for mobility
- Requires caretaker
- Enjoys going fast and playing with her older brother!



Typical Toddler

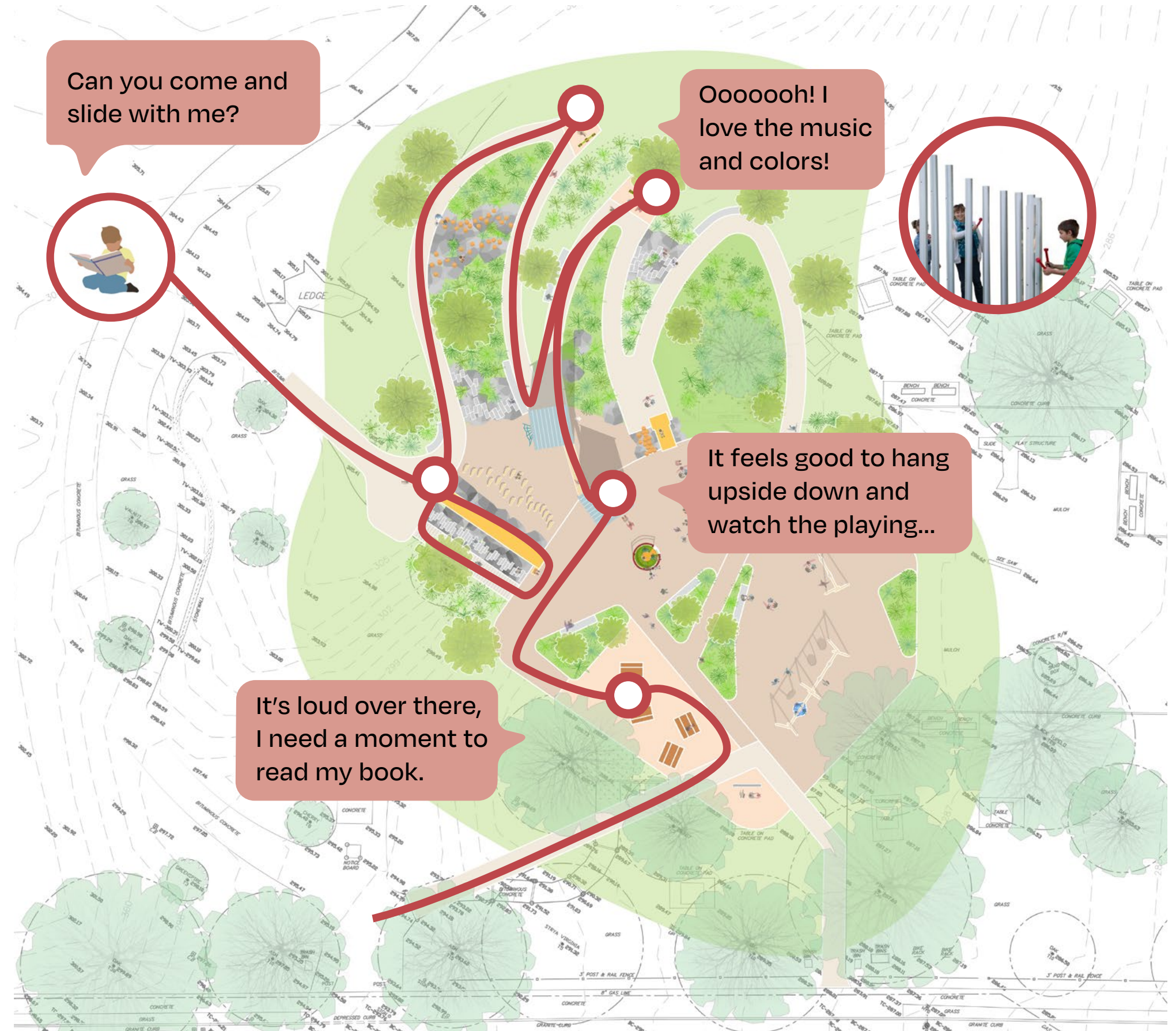
- 3 years old
- Active and excited to explore
- Requiring constant supervision from caretaker
- Enjoys colors and animals!

Circulation



Neurodivergent Preschooler

This five year old on the autism spectrum moves independently, is focused on sensory stimuli and needs quiet places to pause and reset in the busy playscape.



Circulation



Able-Bodied Child

This 11 year old wants to move fast in challenging adventurous play with friends and family!



I like playing tag with friends in the adventure shed...!

I could do SO MANY laps of this slide. Can you go as fast as me??



I love spinning with my sister who uses a chair!



Circulation



Child Using Wheelchair

This eight year old needs the help of a chair and caretaker, but wants to engage in play with friends and family. She's looking for access and inclusive opportunities to join in!



Circulation



Typical Toddler and Caretaker

A typical toddler moves fast and blends physical with dramatic play. She needs the supervision of an adult moving with her!



A playground with something for all to enjoy!



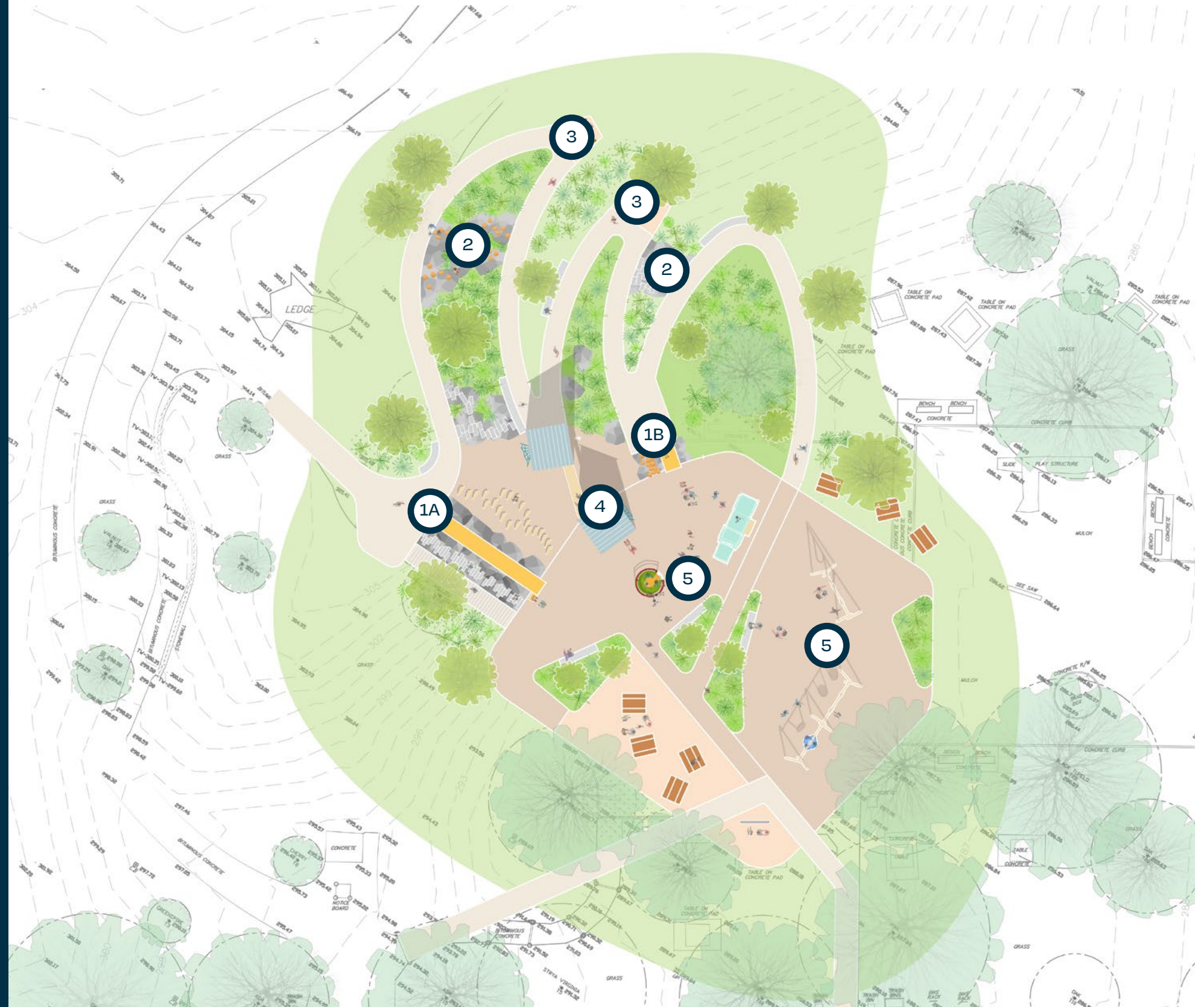
A playground with something for all to enjoy!

**Where would you bring
your family first?**

Tell us in the chat!

Time to take our own tour of the play features!

- Slides
- Hillside Play
- Sensory Nodes
- Adventure Shed
- Play Base Equipment



Slides



I could do SO MANY laps of this slide. Can you go as fast as me??



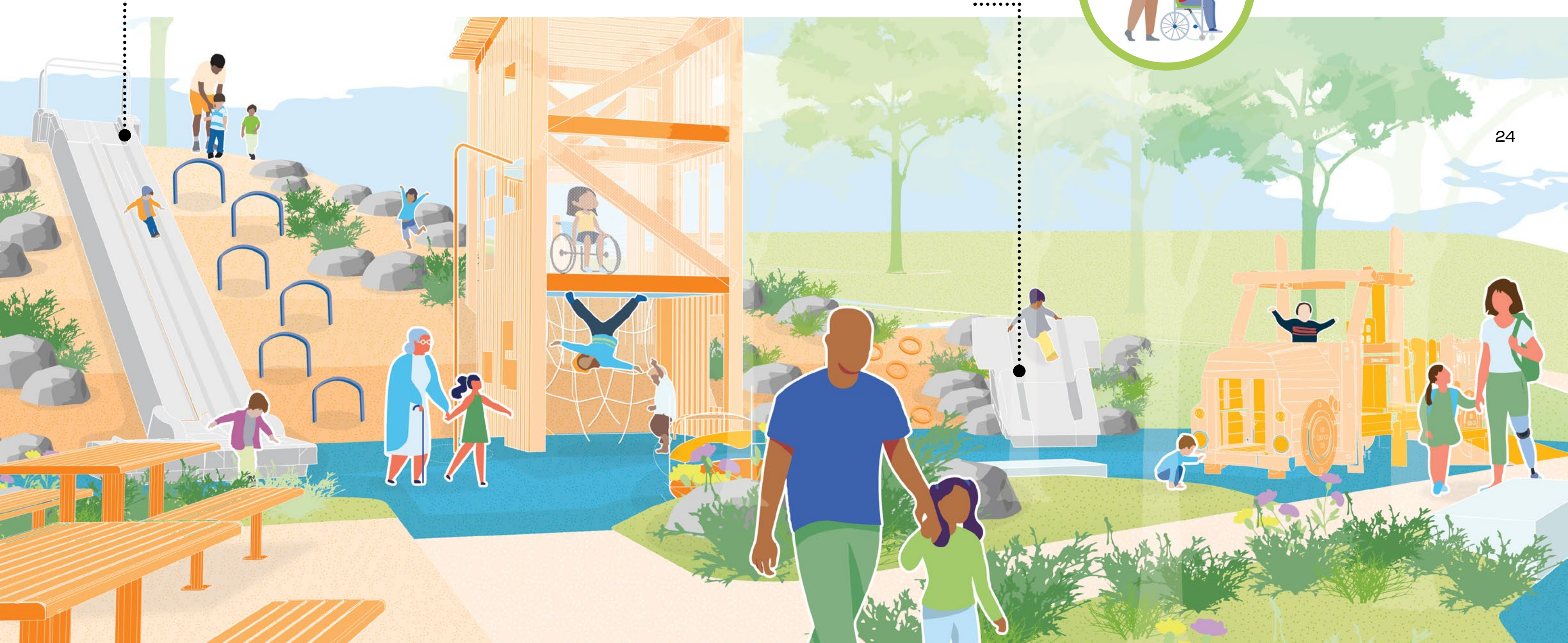
This slide is just right for me!!



I can slide with my friends and family here!

Double Wide 16' Precast Concrete Slide

4' Precast Concrete Slide or Roller Slide



Slides - Precedents + Products



Embankment Slide, UPC Parks Precast Concrete Slides

- 16' Vertical at 30 degree angle, divided channel, dignity bench
- 4' Vertical at 30 degree angle, widened channel, dignity bench

Roller Slide (Alternate)

Hillside Climbing / Scrambling



Look, I can climb back up myself!



Hillside Play - Precedents + Products



Stainless Steel Climbing Hoops



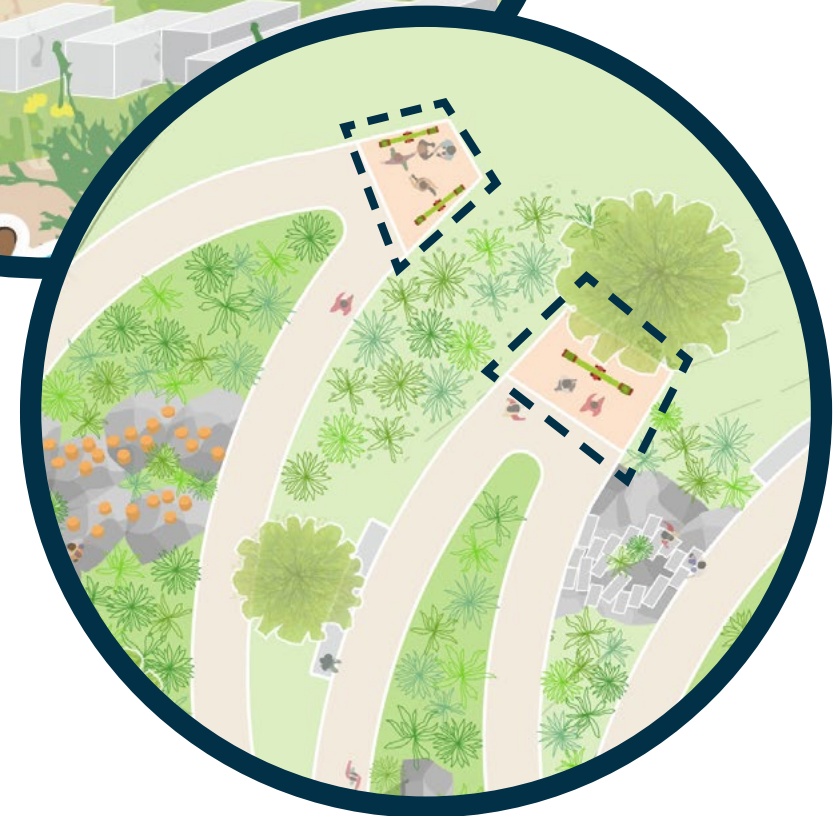
Climbing/Stepping Stones and Logs



Sensory Play Nodes



Ooooooh! I love the music and colors!



Sensory Play Nodes - Potential Products



Optical Panel
Richter



Tubular Chimes
Richter



Pentatonic Tembos
Percussion Play



Xylophone
Percussion Play

Play Structure on Hill: The Adventure Sheds!



Wow, I can roll into two levels of the climber!

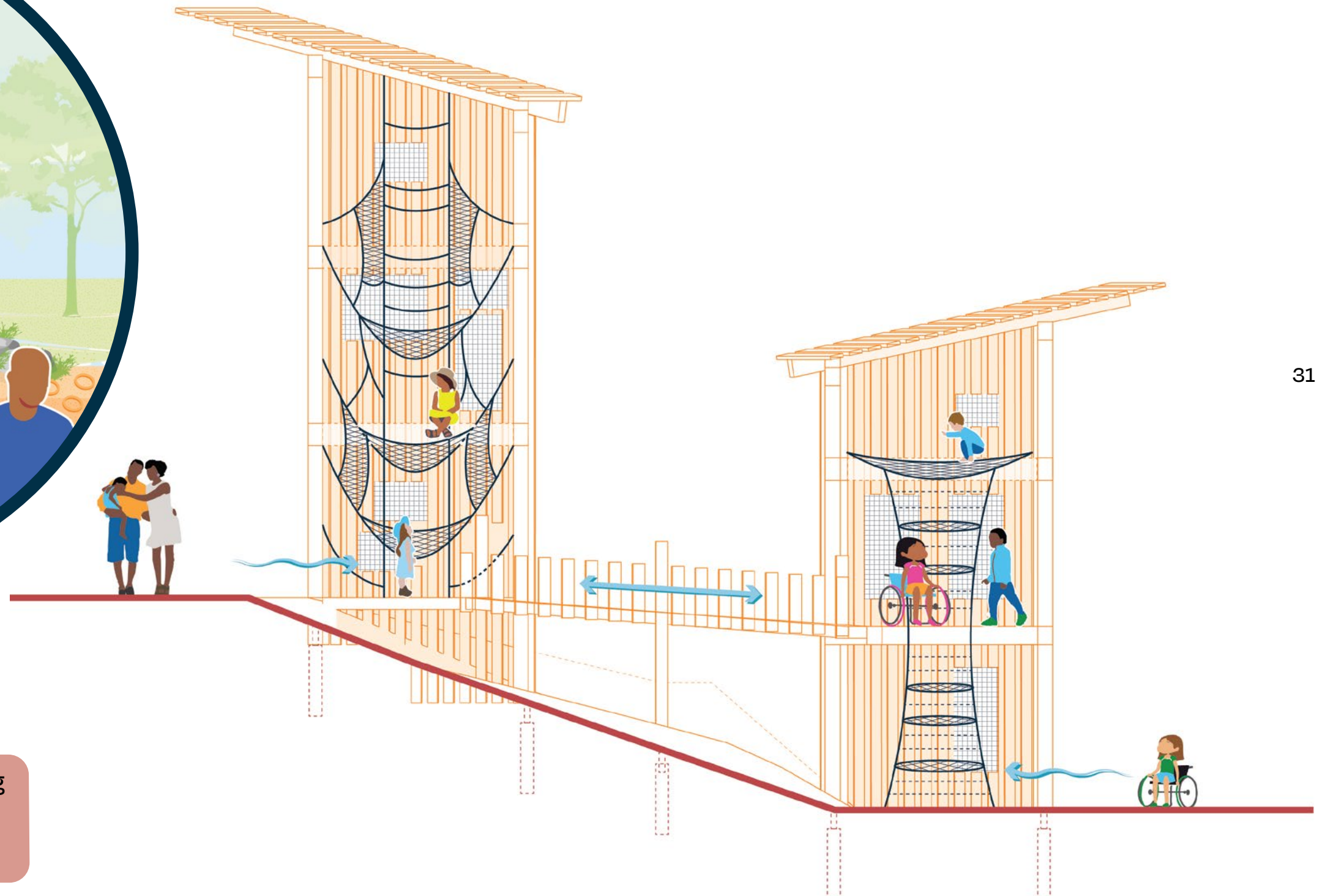
2-piece wood climbing towers, accessible on 2 levels; ropes within.



30

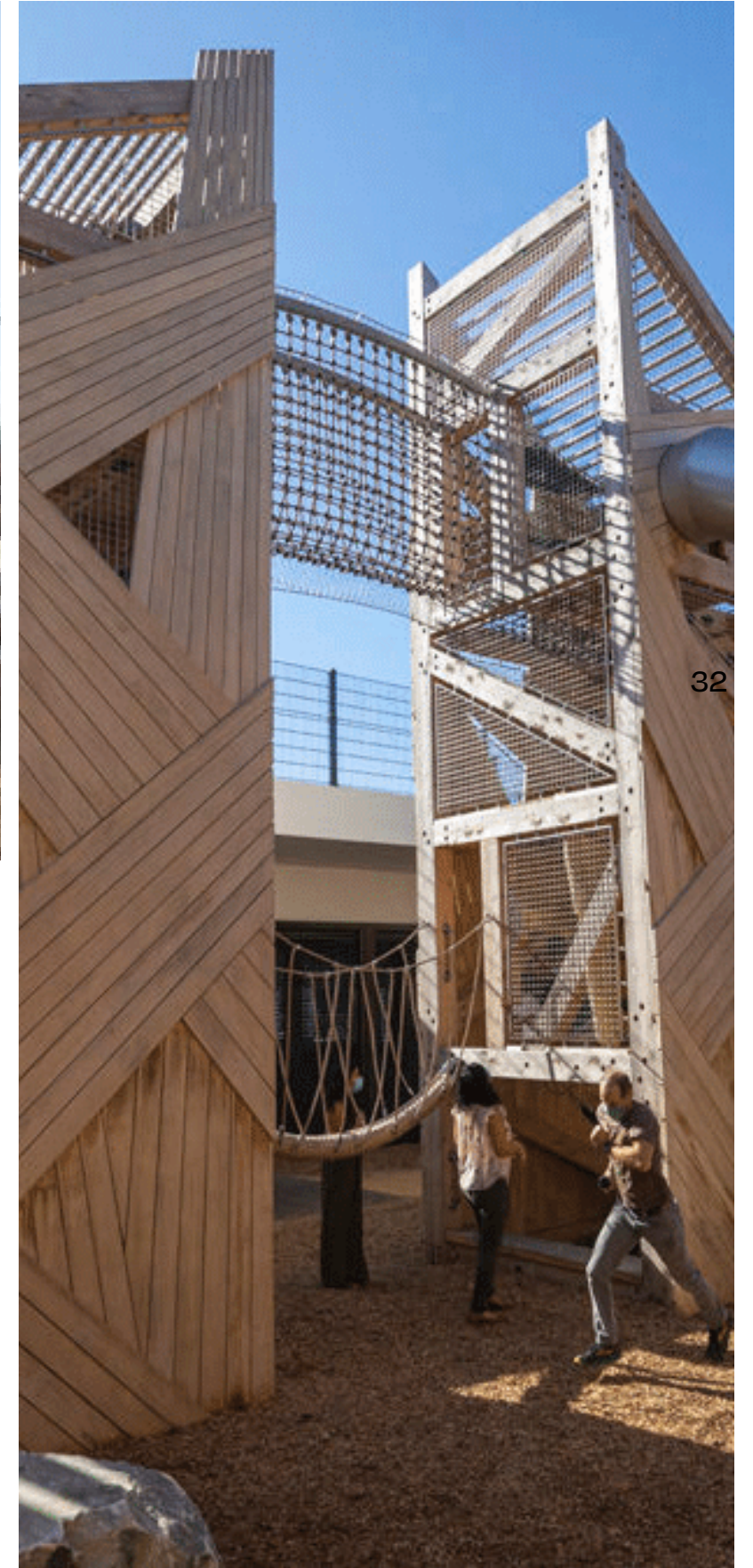


Play Structure on Hill: The Adventure Sheds!



It feels good to hang upside down and watch the playing...

Play Structure - Precedents



Materials and Surfacing



**Poured-in-Place
Rubber Safety
Surfacing**
(as recommended
by Comissioners and
Volunteers of the
Arlington Disability
Commission)



**Stone "Outcrop"
Seating**
(at plantbeds, from
recycled Town
materials)



ADA Asphalt Path
(along hillside with
metal or granite edging,
to match existing
Robbins paths)



Seatwall Pause Places
(along hillside)

Play Base Equipment



I love the feeling of spinning...with my whole family!



Play Base Equipment



Tot Swing
Kompan



Double Bay Swing (All-User and Basket)
Kompan



Long Nose Truck
Kompan



Universal Carousel
Kompan

Thanks for playing with us!



An Inclusive Adventure Playscape Nestled Into a Beloved Community Park



An Inclusive Adventure Playscape Nestled Into a Beloved Community Park

I was most excited by...
I have questions about...

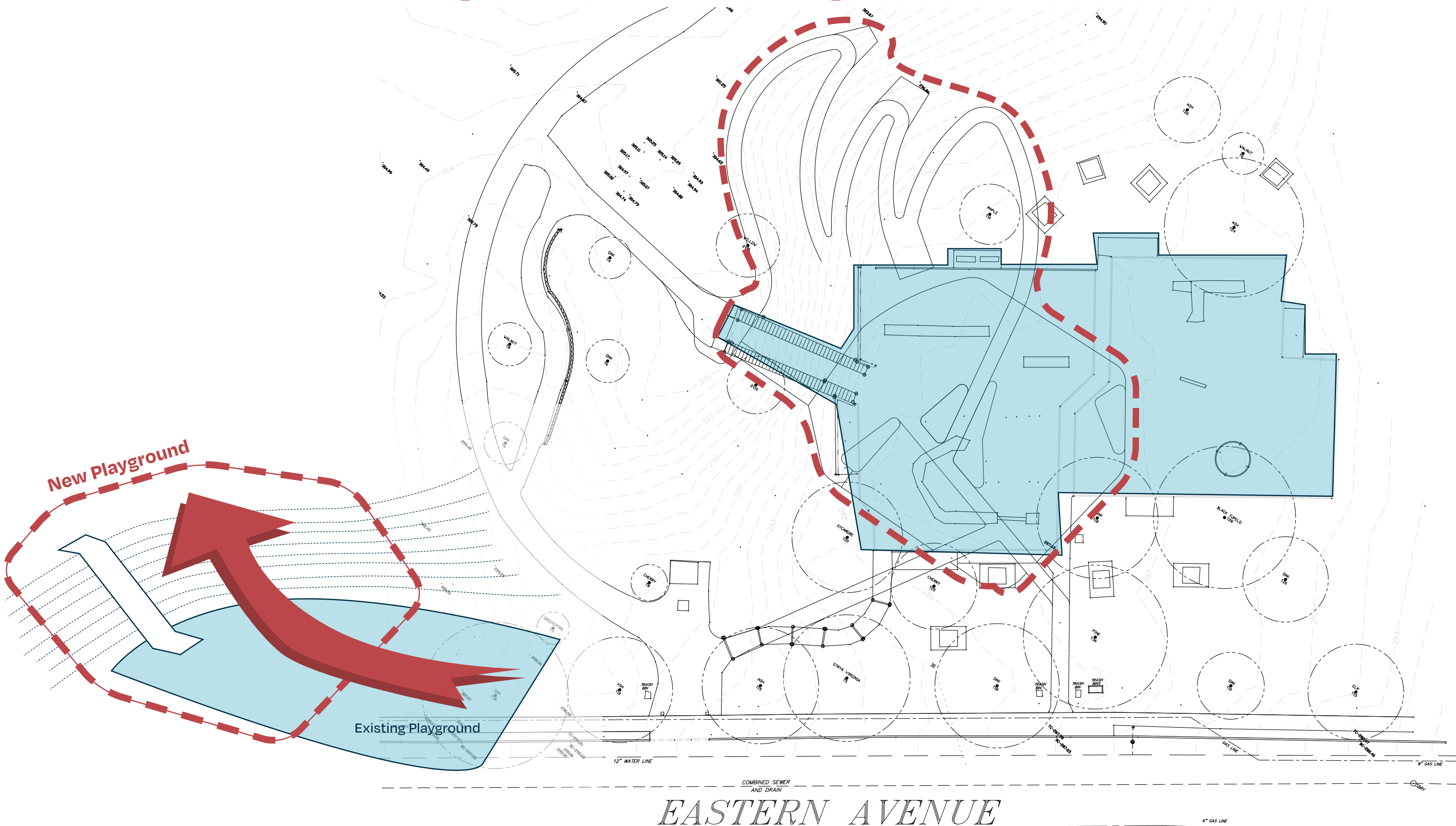
Tell us in the chat or raise your hand!





Discussion

A Shift to Capture the Slope!



Caregiver Spaces

Finding shade to sit for a snack or to watch the kids play makes it all possible!

